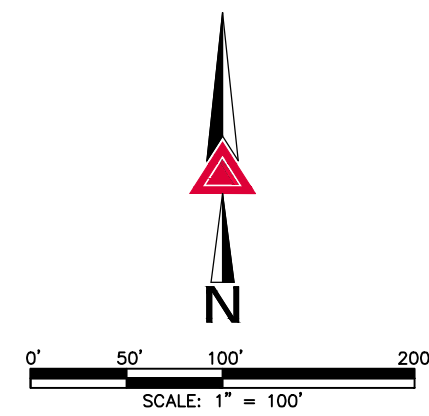
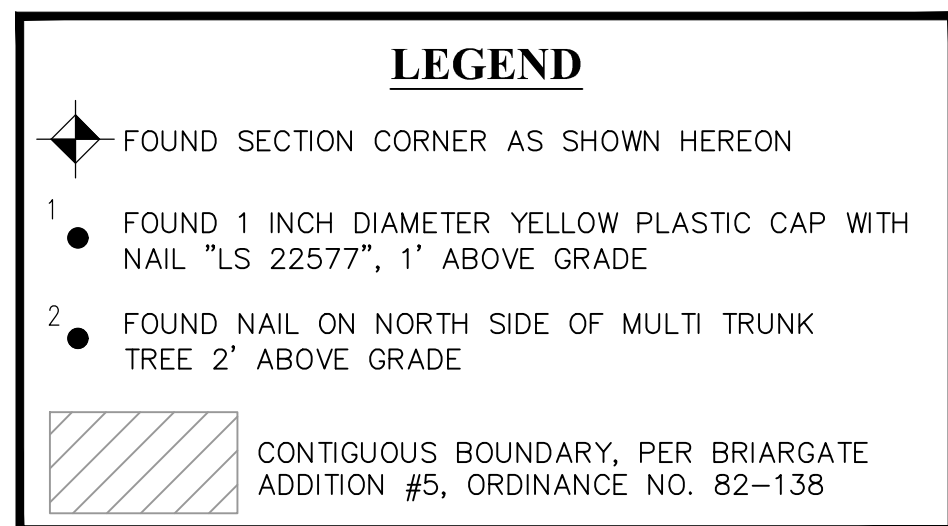


SOUTHWEST QUARTER OF THE SOUTHWEST QUARTER OF SECTION 31,  
TOWNSHIP 12 SOUTH, RANGE 65 WEST OF THE SIXTH PRINCIPAL MERIDIAN,  
TO THE CITY OF COLORADO SPRINGS, COUNTY OF EL PASO, STATE OF COLORADO



PEACH RANCH LLC  
1075 MANDEVILLA WAY  
CORONA, CA 92879-8804  
(360) 784-4288  
ATTN: DAVID PEACOCK  
ca-milkman@sbcglobal.net



---

SURCHARGE: \_\_\_\_\_

FOR REVIEW  
DO NOT RECORD

[illegible]

**300 East Mineral Ave., Suite 1  
Littleton, Colorado 80122  
Phone: (303) 713-1898  
Fax: (303) 713-1897  
[www.aztecconsultants.com](http://www.aztecconsultants.com)**



**AZTEC**  
CONSULTANTS, INC.

SW 1/4 SW1/4 SEC. 31, T12S, R65W, 6TH P.M.  
EL PASO COUNTY, COLORADO

SHEET  
**ONE**  
OF 1 SHEET

142124-11

DB NO.