

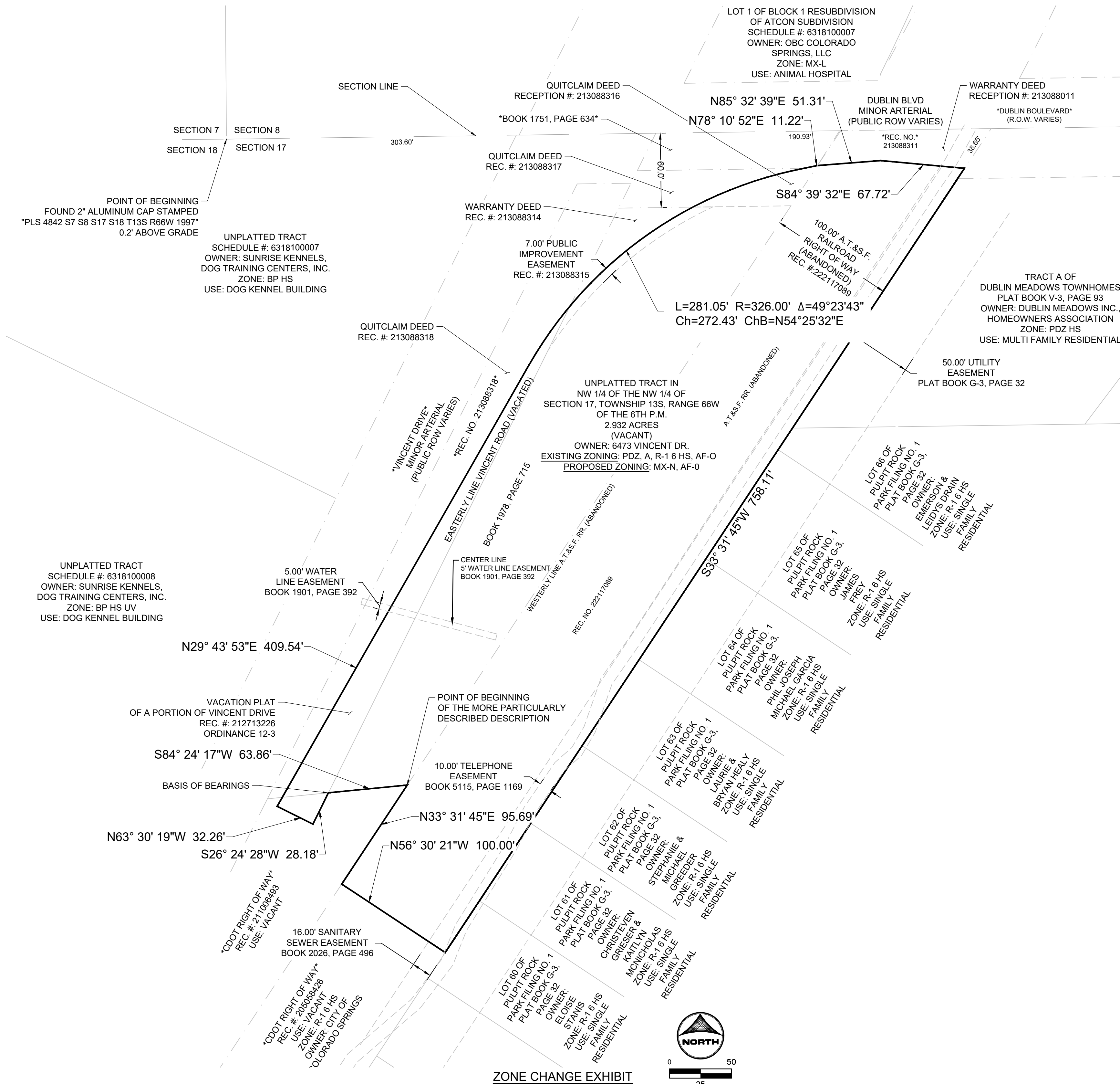
# VINCENT DRIVE ZONE MAP AMENDMENT

UNPLATTED TRACT IN NW 1/4 OF THE NW 1/4 OF SECTION 17, TOWNSHIP 13S, RANGE 66W OF THE 6TH P.M.  
CITY OF COLORADO SPRINGS, COLORADO

## EXHIBIT B

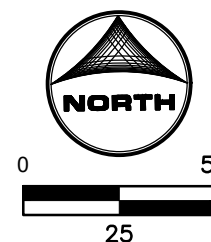
### NOTES:

1. THE CITY OF COLORADO SPRINGS WILL REQUIRE AN ADDITION R.O.W. DEDICATION ALONG DUBLIN BOULEVARD AS PART OF ANY FUTURE DEVELOPMENT PLAN. THE DIMENSIONS WILL BE DETERMINED AT THAT TIME.



HR GREEN Xref: 2502121-xx-rrw; xgl-1-dh01; 2535-00 LSP to client

ZONE CHANGE EXHIBIT



LAND USE REVIEW FILE #: ZONE-25-0010

DRAWN BY: CVW      JOB DATE: 12/10/2025  
 APPROVED: BH      JOB NUMBER: 2502121  
 CAD DATE: 12/16/2025  
 CAD FILE: J:\2025\2502121\CAD\DWG\Zone Map Amendment Exhibit\Zone Map Amendment Exhibit

BAR IS ONE INCH ON OFFICIAL DRAWINGS.  
 IF NOT ONE INCH, ADJUST SCALE ACCORDINGLY.

NO.	DATE	BY	REVISION DESCRIPTION



HR GREEN - COLORADO SPRINGS  
 1975 RESEARCH PARKWAY SUITE 160  
 COLORADO SPRINGS, CO 80920  
 PHONE: 719.300.4140  
 FAX: 719.965.0044

**MX-N AT VINCENT DRIVE**  
 6473 VINCENT DRIVE, LLC  
 COLORADO SPRINGS, COLORADO

ZONING MAP AMENDMENT (REZONE)  
 ZONE CHANGE EXHIBIT B

SHEET  
**ZC**

2 of 2