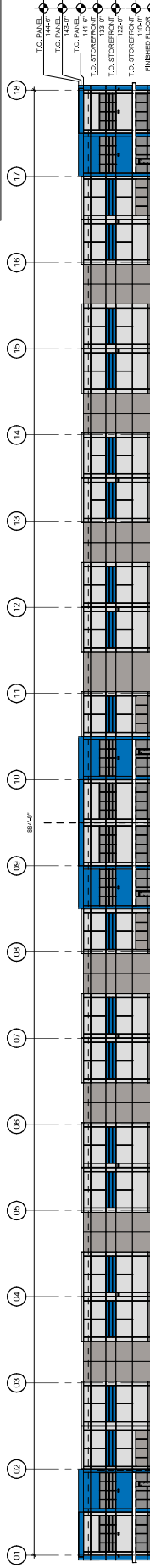


LIBERTY LOGISTICS

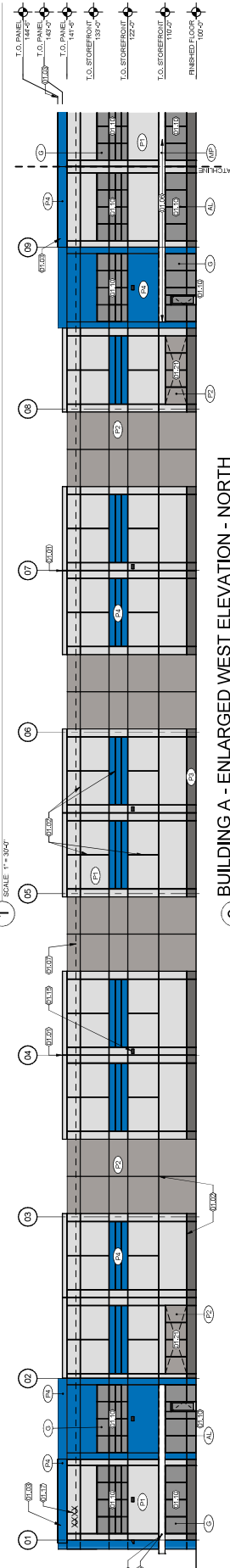
CONDITIONAL USE - 5930-6180 AIRPORT ROAD

LOT 3, LOT 4 COLORADO SPRINGS, AIRPORT FILING NO. 1B & TRACTS OF LAND
 LOCATED IN THE WEST 1/2 OF SECTION 18, TOWNSHIP 14 SOUTH, RANGE 65 WEST OF THE 6TH PRINCIPLE
 MERIDIAN, LOCATED IN THE CITY OF COLORADO SPRINGS, COUNTY OF EL PASO, STATE OF COLORADO.

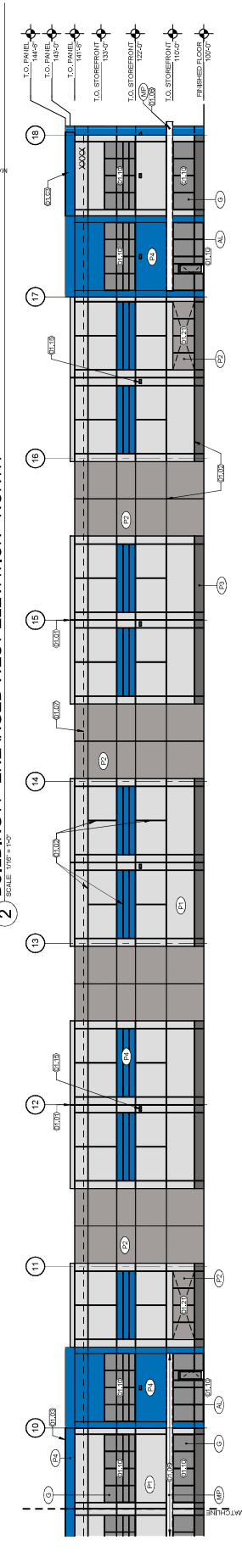
CITY APPROVAL



1 BUILDING A - OVERALL WEST ELEVATION
 SCALE: 1/8" = 1'-0"



2 BUILDING A - ENLARGED WEST ELEVATION - NORTH
 SCALE: 1/8" = 1'-0"



3 BUILDING A - ENLARGED WEST ELEVATION - SOUTH
 SCALE: 1/8" = 1'-0"

NOTES:

- GAS METERS MUST BE A MINIMUM OF 3 FEET FROM DOORS, OPERABLE WINDOWS, OR ANY VENTS OR OPENINGS IN WALLS.
- TRANSFORMER AND SERVICE LINE LOCATIONS CONTACT FIELD ENGINEERING AT 714-688-9586 (GAS) OR 714-688-9584 (ELECTRIC) WITH ANY QUESTIONS.

KEYNOTES:

- 0.01 CONCRETE PANEL JOINT WITH 3/4" CHAMFERED EDGES, BACKER ROD & 3/4" x 2" x 1/4" REVEAL, PAINTED TO MATCH ADJACENT WALL COLOR.
- 0.02 3/4" x 2" x 1/4" REVEAL GAUGE FRAMED CORNICE WRAPPED IN BREAK METAL, PAINT FELD.
- 0.03 20TH T.S. LIVERY CANYON TO ATTACH TO CONC. TRIP-UP WALL WITH T.S.
- 0.04 DASHED LINE INDICATES MECHANICALLY FASTENED BRIGLIFY PRO ROOF INSULATED BY VOID GLAZING IN ANODIZED ALUMINUM STOREFRONT SYSTEM.
- 0.05 SEE FINISH LEGEND.
- 0.06 BUILDING ADDRESS LOCATION, VERIFY WITH LOCAL FIRE DEPARTMENT WITH TO FINAL FINISHES IN PLACE. CONSULT WITH THE SUBMITTER.
- 0.07 BUILDING COLOR PER FIRE DEPARTMENT STANDARDS. VERIFY 3/4" DEEP RECESS, TYPICAL 3/4" x 2" REVEALS WITH RECESS TO PROVIDE THE MILLION APPEARANCE.

EXTERIOR FINISH LEGEND

KEY	DESCRIPTION	IMAGE	MANUFACTURER	REMARKS / COMMENTS
(01)	EXTERIOR PART	[Image]	LIGHT GREY	
(02)	EXTERIOR PART	[Image]	MEDIUM GREY	
(03)	EXTERIOR PART	[Image]	DARK GREY	
(04)	EXTERIOR PART	[Image]	BLUE ACCENT	
(05)	METAL PART	[Image]	MATCH STOREFRONT ALUMINUM TO SUBMITTER	
(06)	ALUMINUM STOREFRONT	[Image]	CLEAR ANODIZED	
(07)	GLAZING	[Image]	W/RO - SOLAR GRAY	

ISSUED: MAY 13, 2026

