

PIKEVIEW QUARRY DONATION

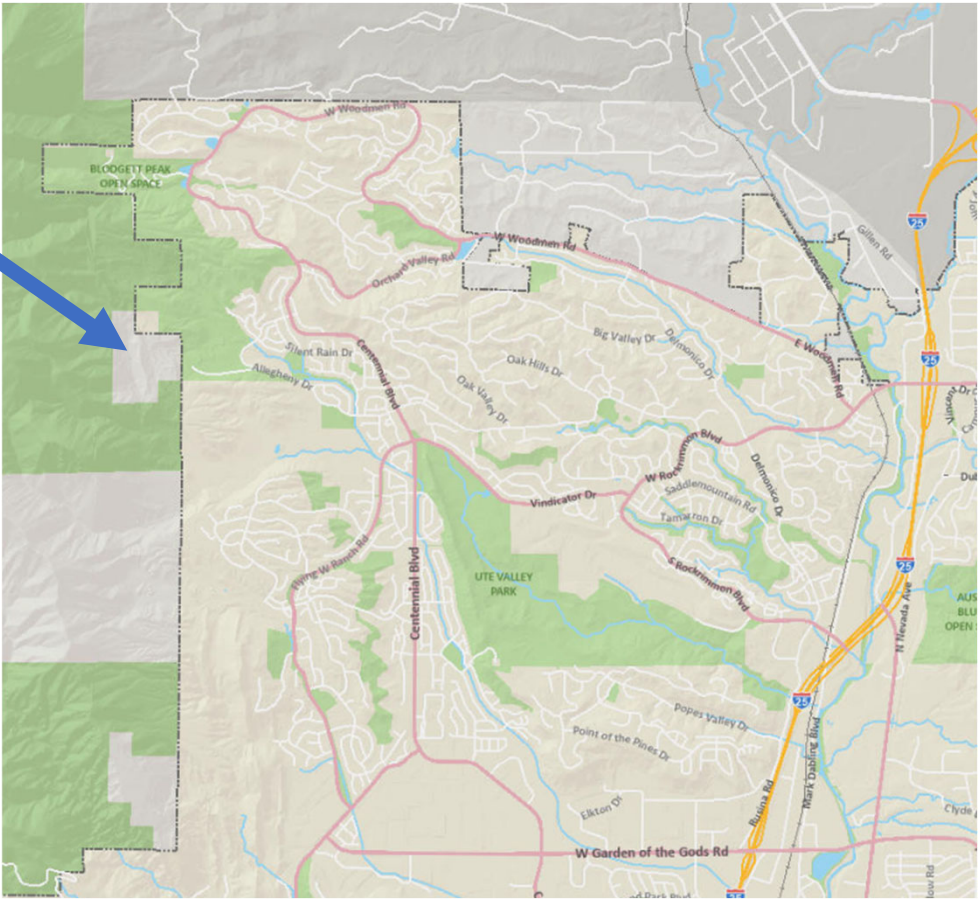


04/27/2026

Lonna Thelen and David Deitemeyer, Parks Recreation and
Cultural Services Department

LOCATION

SITE



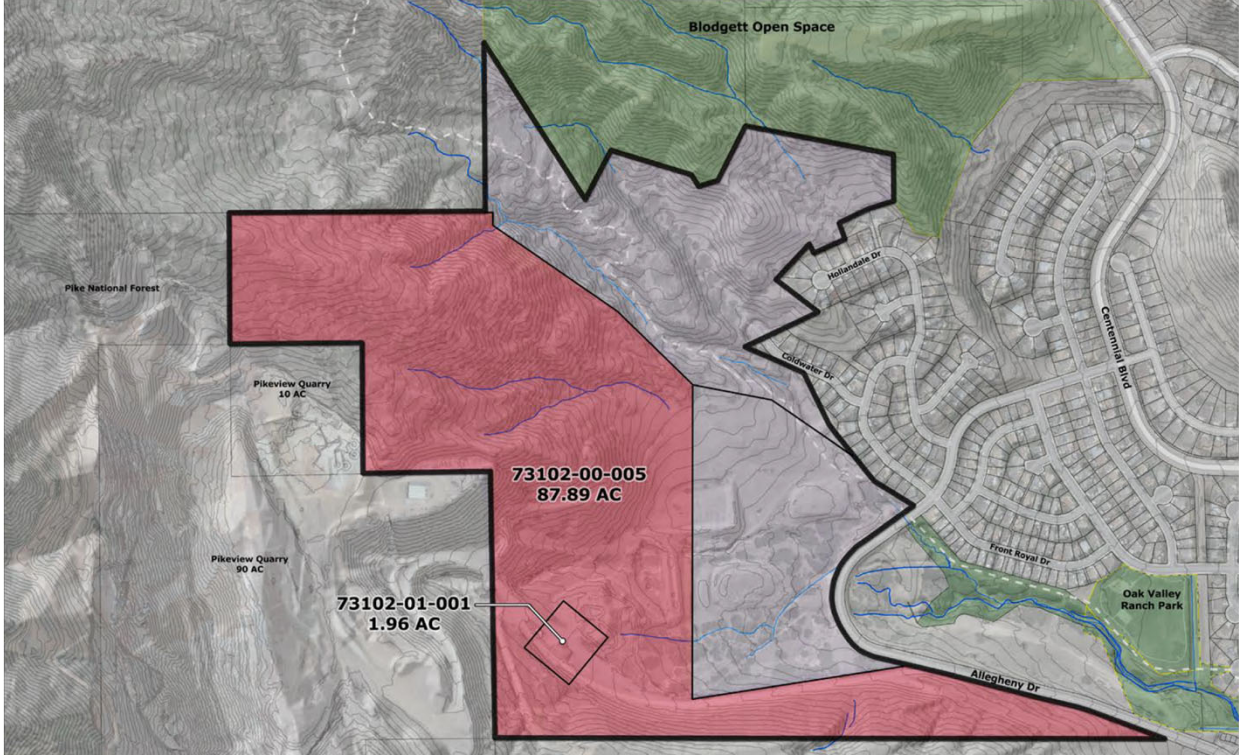
BACKGROUND



Multi-part acquisition:

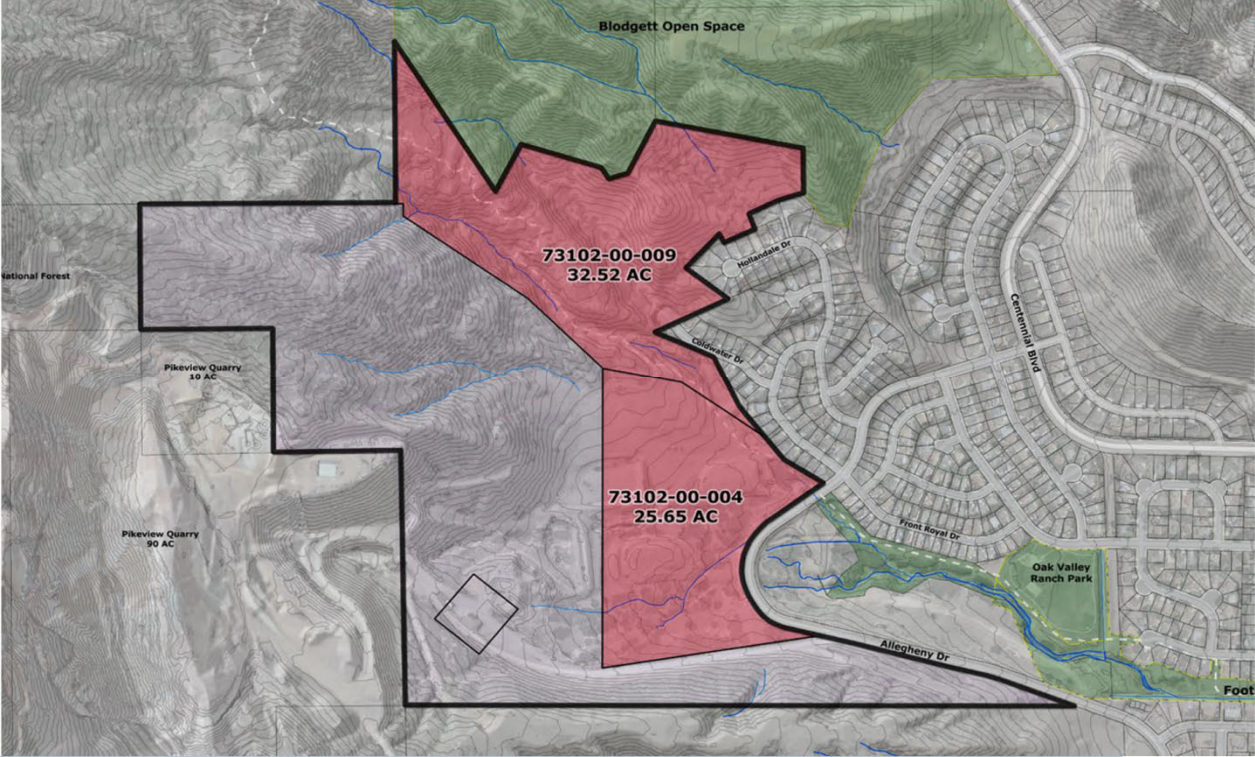
- **Pikeview Quarry Frontage Property**
 - Phase I – 88 acres acquired in September of 2020
 - Phase II – 62 acres acquired in April of 2021
- **Black Canyon Quarry**
 - 165 acre acquisition, acquired in September of 2020
- **Pikeview Quarry Donation**
 - Current donation request, 100 acre parcel
- **Total Acreage – 415 acres**

PIKEVIEW QUARRY FRONTAGE PROPERTY PHASE I

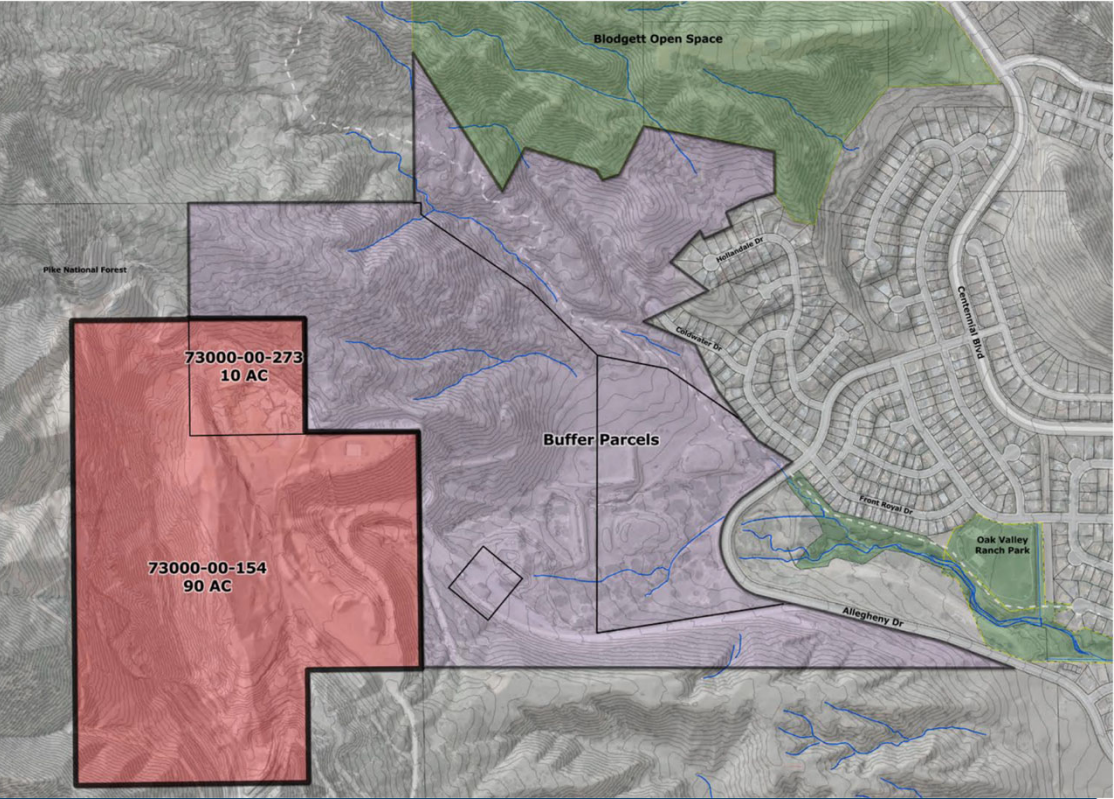


Pikeview Quarry Donation

PIKEVIEW QUARRY FRONTAGE PROPERTY PHASE II



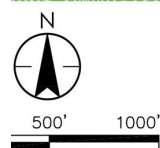
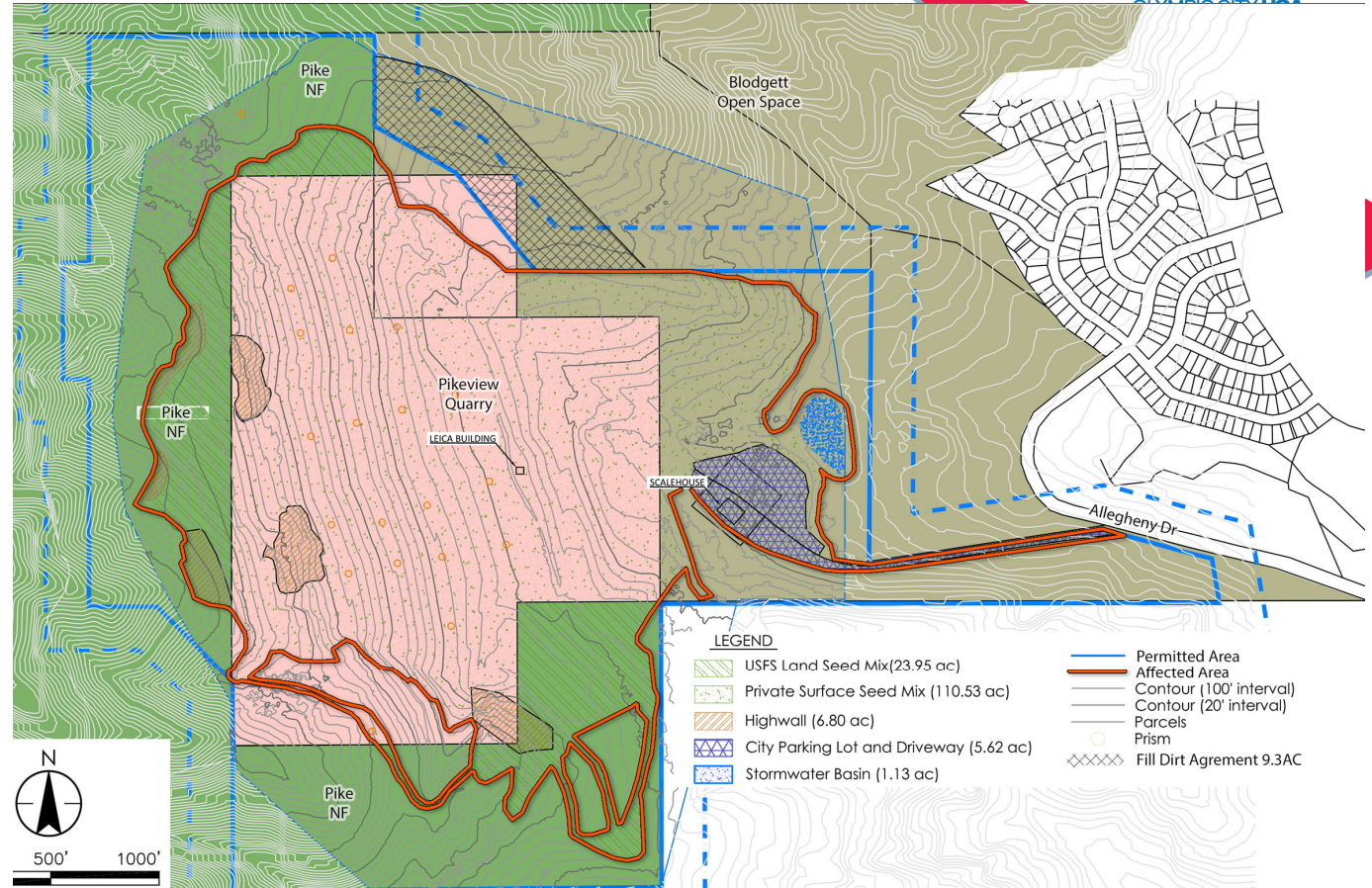
PIKEVIEW QUARRY DONATION PROPERTY



RECLAMATION PROCESS



- Mining started in 1903
- Expanded greatly with Air Force Academy construction and Colorado Springs growth
- Current owner acquired quarry in 1972 and assumed reclamation liability
- Mining Operations permanently halted in 2018
- Reclamation plan permitted with Colorado Division of Reclamation, Mining and Safety (DRMS)
- 2022 through 2025



RECLAMATION PROCESS

- Establish buttress, toe of slope with “benches” to manage water
- Leica monitoring system
- Moved 3.4 Million Cubic Yards (CY) material moved, 127,000 CY topsoil placed
- Daily Inspections with QA/QC manager and testing every 5,000 CY
- Monthly on-site Inspections with DRMS and project team
- Seeded, erosion control blanketed and 31,000 shrubs planted



RECLAMATION PROCESS



Pikeview Quarry Donation



Pikeview Quarry – Fall 2020



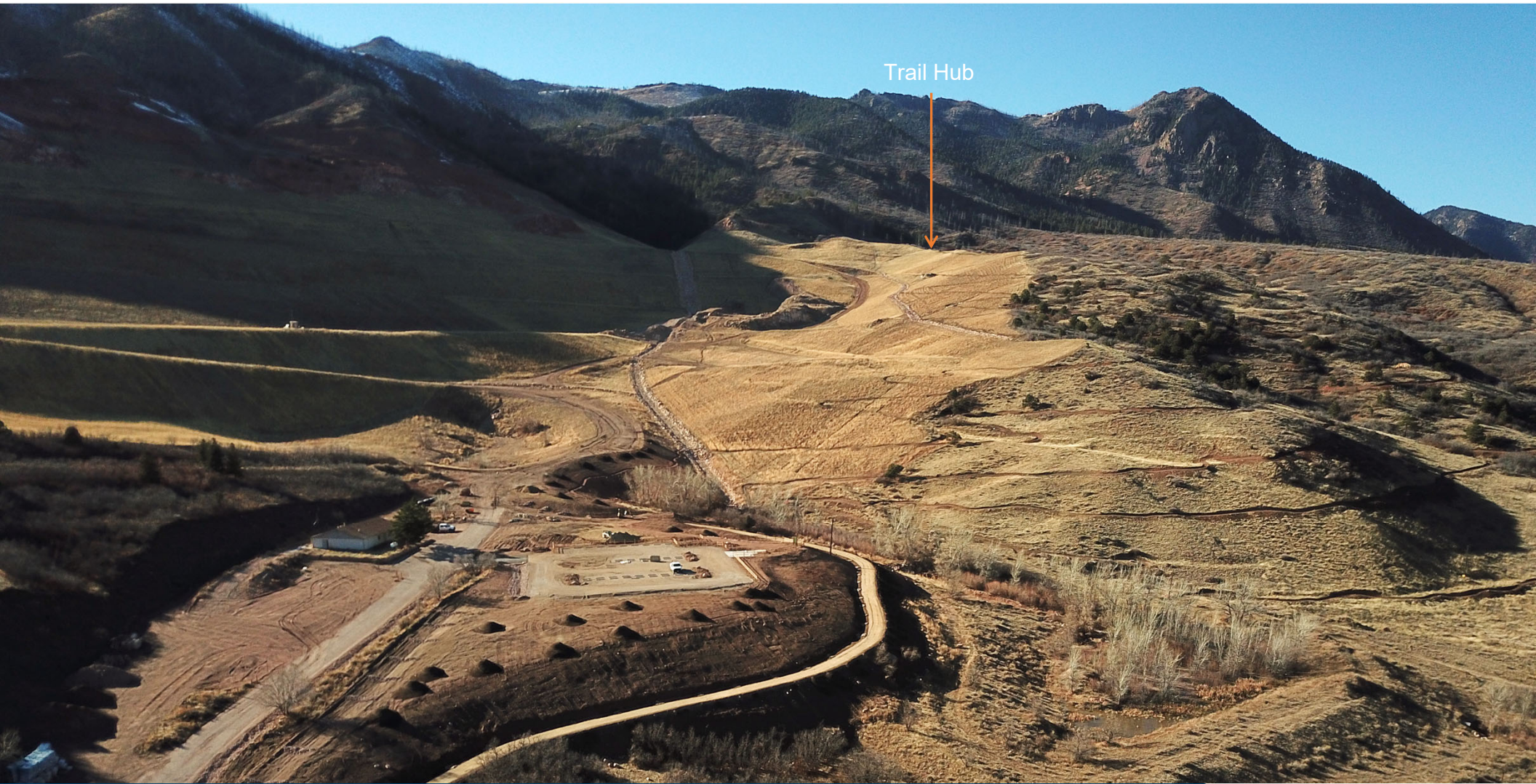
Pikeview Quarry – Summer 2023



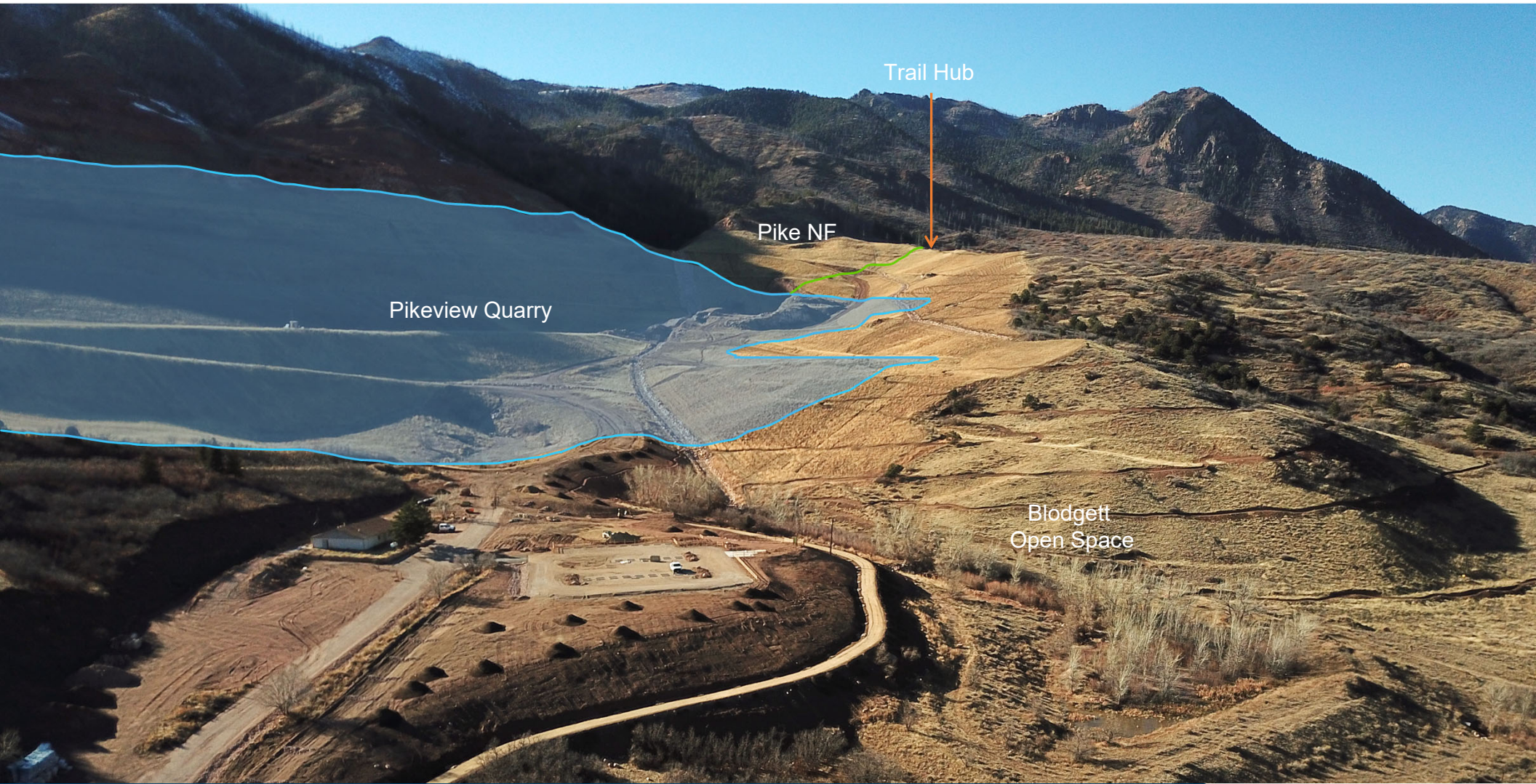
Pikeview Quarry – Fall 2024



Pikeview Quarry – Fall 2025



Trail Hub

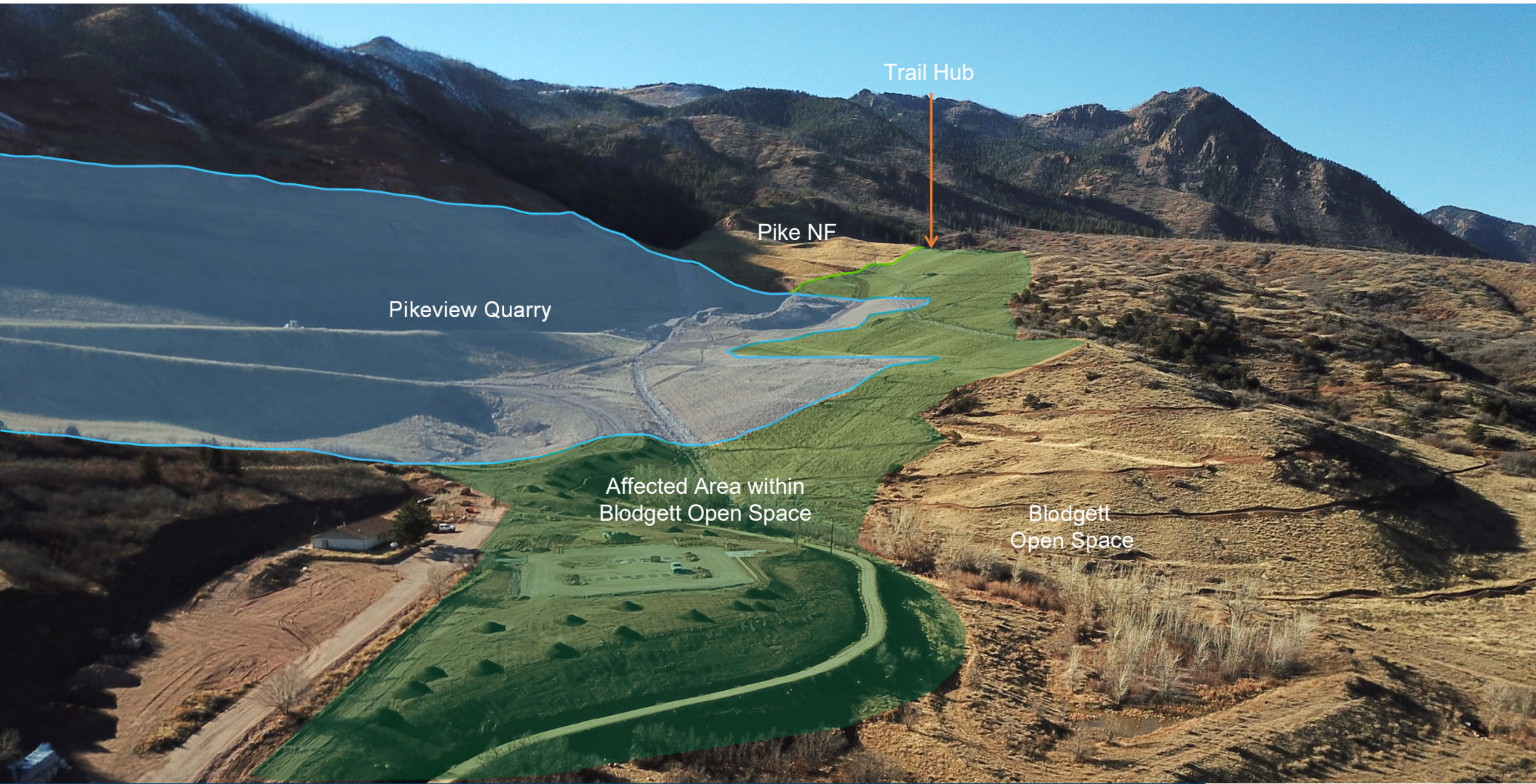


Pikeview Quarry

Pike NF

Trail Hub

Blodgett
Open Space



RECLAMATION REVIEW



- Engineered, Regulated, and Independently Reviewed
- Designed by licensed professional engineers and regulated through the State of Colorado Division of Reclamation, Mining, and Safety (DRMS)
- Permitted, constructed, monitored, and ultimately approved and signed off by the State DRMS
- Independently reviewed by Granite Engineering Group to support City acceptance



RECLAMATION REVIEW

- Evaluated reclamation design, construction, historical failures, and current slope conditions
- Identified past instability driven by weak clay layer, groundwater, and mining-related slope conditions
- Confirmed reclamation improvements (buttress and drainage) **have significantly increased stability**
- Concluded the **site is currently stable**, with **ongoing groundwater monitoring and drainage maintenance recommended**



Pikeview Quarry Donation

TIMELINE

- April 27th - City Council Work Session
- April 28th - City Council Regular Session Vote
- Closing by May 15th



MOTION

A motion to approve a resolution authorizing the donation of approximately 100 acres of land from Castle Concrete Co. to the Parks, Recreation and Cultural Services Department.



QUESTIONS?



CMSP Extension