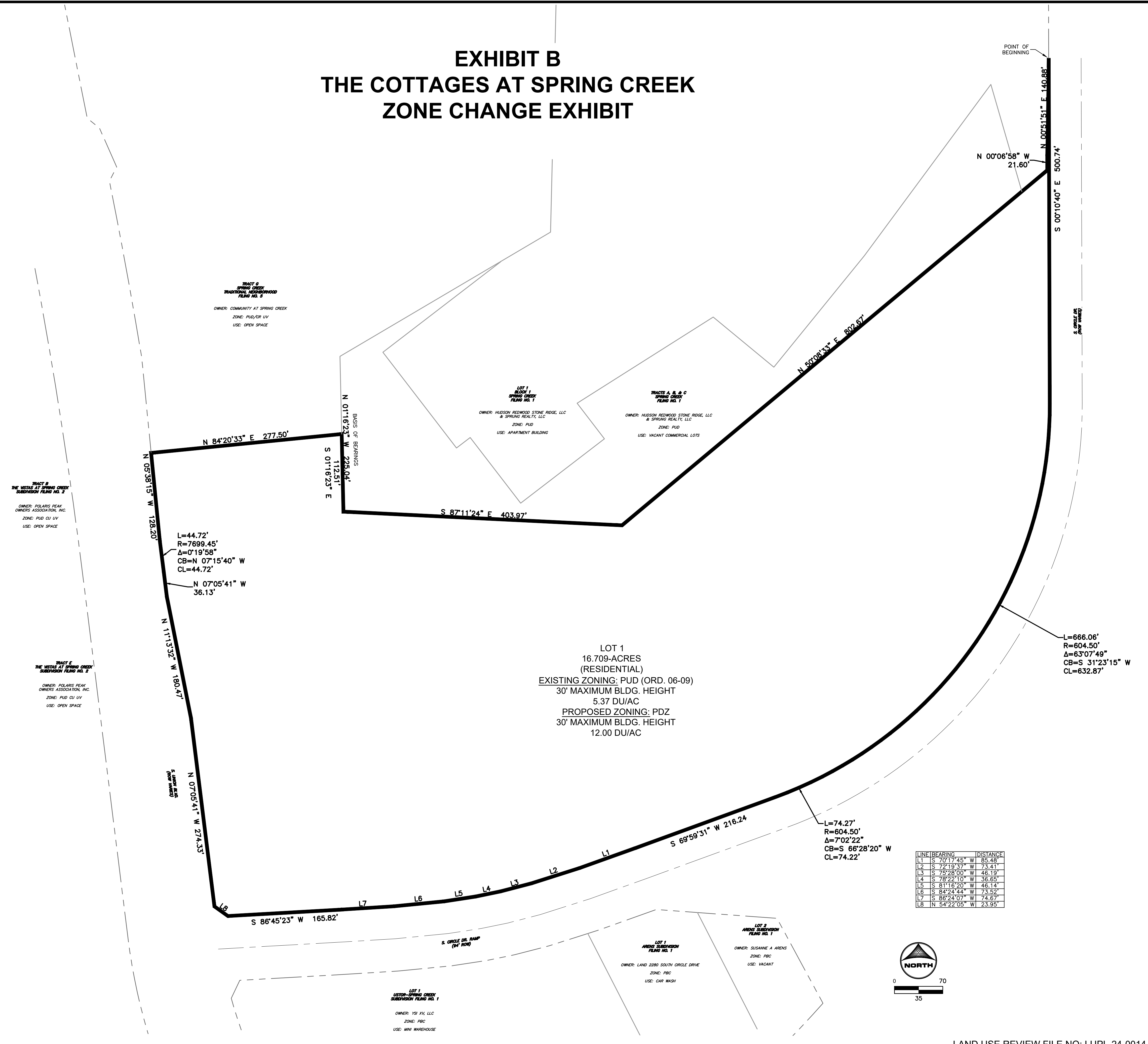
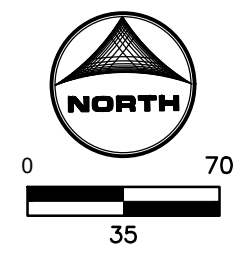


EXHIBIT B THE COTTAGES AT SPRING CREEK ZONE CHANGE EXHIBIT



LINE	BEARING	DISTANCE
L1	S 70°17'45\"	W 85.48'
L2	S 72°19'37\"	W 73.41'
L3	S 75°28'00\"	W 46.19'
L4	S 78°22'10\"	W 36.65'
L5	S 81°16'20\"	W 46.14'
L6	S 84°24'44\"	W 73.52'
L7	S 86°24'07\"	W 74.67'
L8	N 54°22'05\"	W 23.95'



PRELIMINARY
NOT FOR CONSTRUCTION

LAND USE REVIEW FILE NO: LUPL-24-0014 / PDZZ-24-0004

PERKINS, BLAINE, 1/9/2025 1:53 PM

DRAWN BY: BKP JOB DATE: 1/9/2025 BAR IS ONE INCH ON OFFICIAL DRAWINGS.
 APPROVED: BKP JOB NUMBER: 2403385 0" = 1"
 CAD DATE: 1/9/2025 IF NOT ONE INCH, ADJUST SCALE ACCORDINGLY.
 CAD FILE: J:\2024\2403385\CAD\DWG\Development Plan\2403385-Site

NO.	DATE	BY	REVISION DESCRIPTION

HRGreen
 HR GREEN - COLORADO SPRINGS
 1975 RESEARCH PARKWAY, SUITE 160
 COLORADO SPRINGS CO 80919
 PHONE: 719.300.4140
 FAX: 844.273.1057

THE COTTAGES AT SPRING CREEK
 GOODWIN KNIGHT
 COLORADO SPRINGS, COLORADO

GOODWIN KNIGHT
 ZONING MAP AMENDMENT (REZONE)
 ZONE CHANGE EXHIBIT

SHEET
ZC
 3