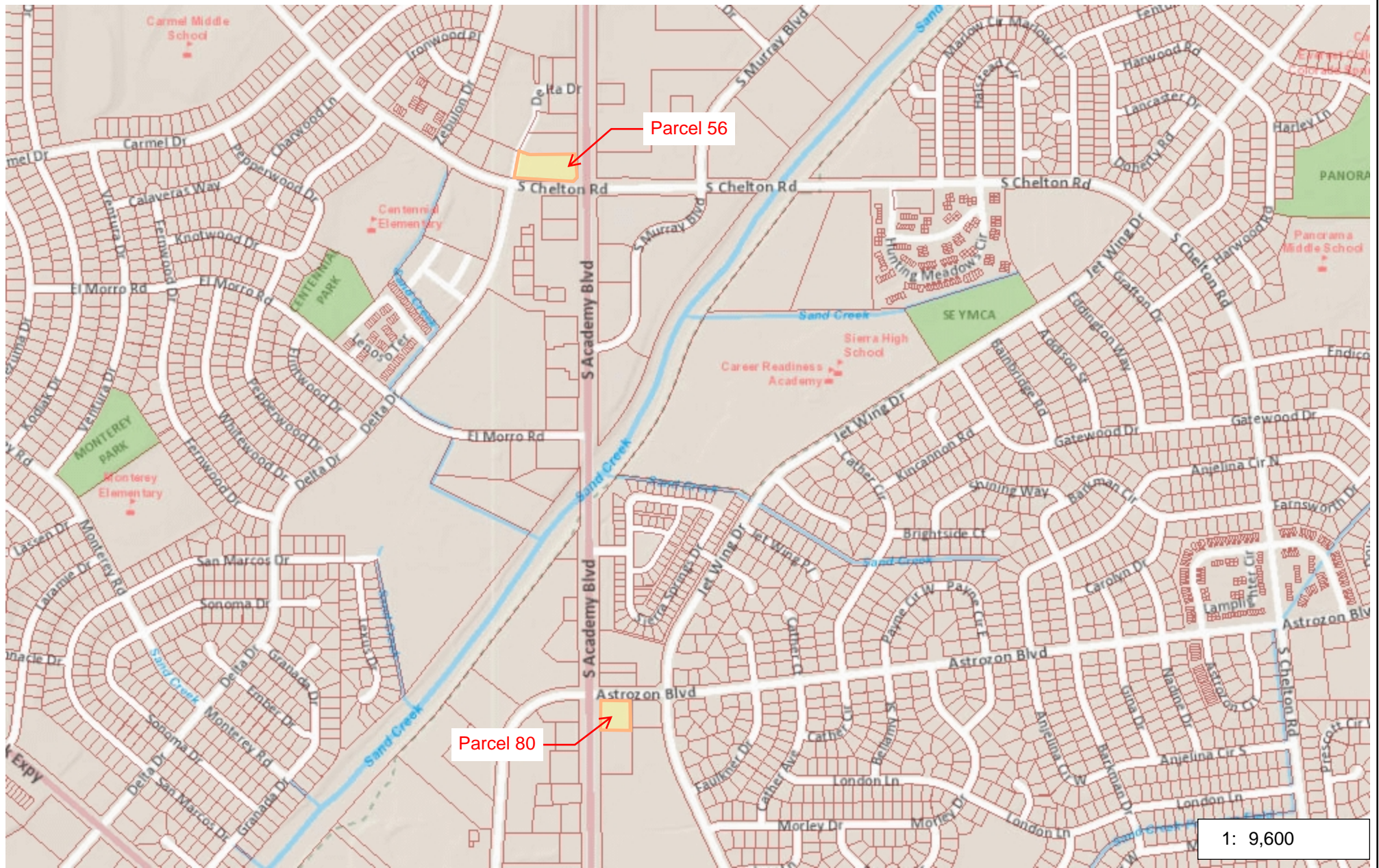
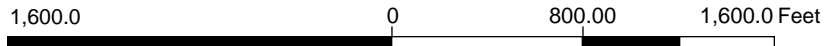




# City of Colorado Springs



1: 9,600



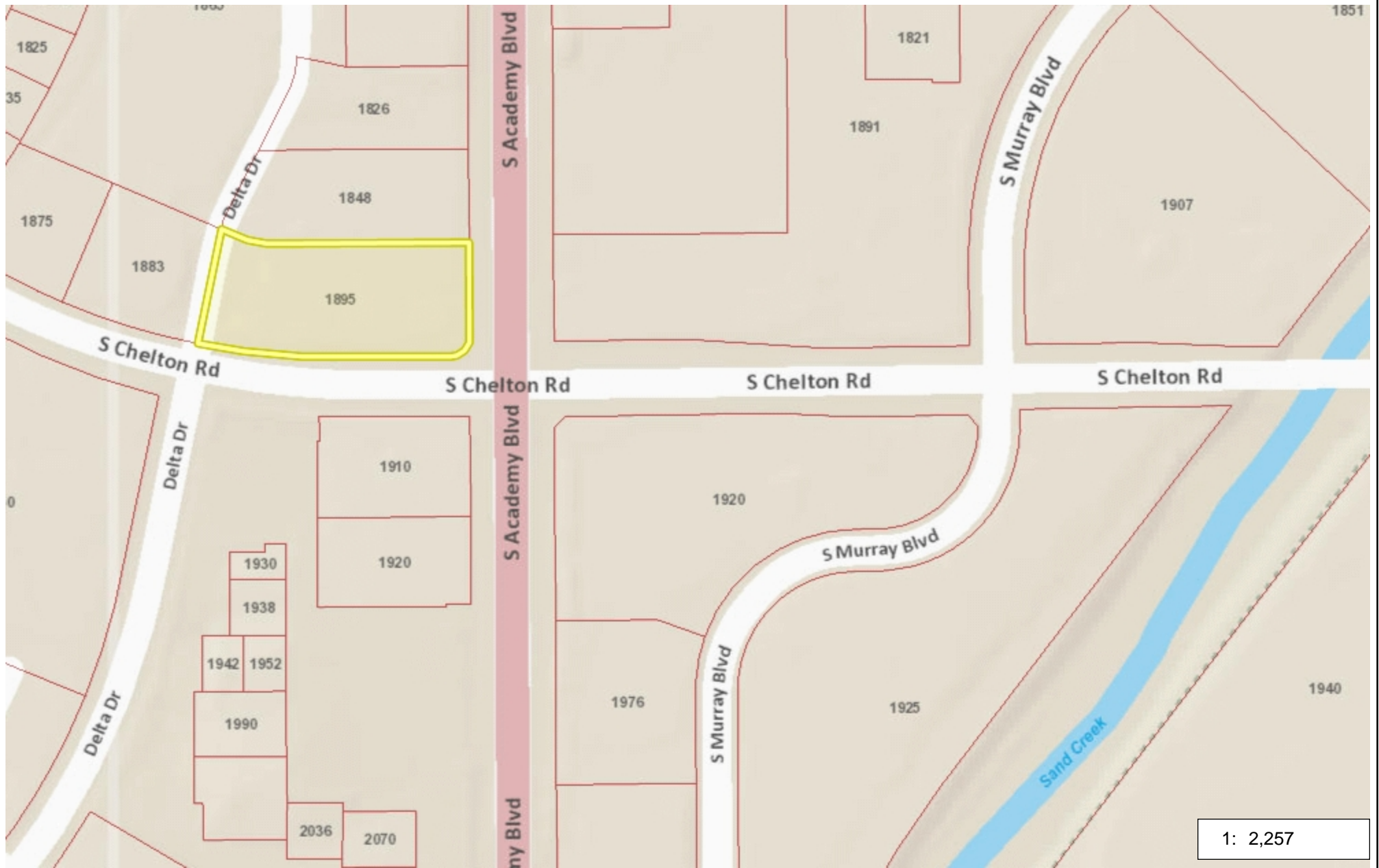
NAD\_1983\_StatePlane\_Colorado\_Central\_FIPS\_0502\_Feet  
 © Latitude Geographics Group Ltd.



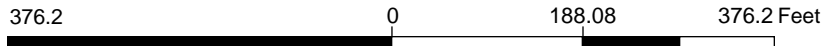
Copyright © 2023 City of Colorado Springs on behalf of the Colorado Springs Utilities. All rights reserved. This work, and/or the data contained herein, may not be modified, republished, used to prepare derivative works or commercially exploited in any manner without the prior express written consent of the City of Colorado Springs. This work was prepared utilizing the best data available at the time of creation. Neither the City of Colorado Springs, the Colorado Springs Utilities, nor any of their employees makes any warranty, express or implied, or assumes any legal liability or responsibility for accuracy, completeness, or usefulness of any data contained herein. The City of Colorado Springs, Colorado Springs Utilities, and their employees explicitly disclaim any responsibility for the data contained herein.



# City of Colorado Springs



1: 2,257



NAD\_1983\_StatePlane\_Colorado\_Central\_FIPS\_0502\_Feet  
 © Latitude Geographics Group Ltd.



Copyright © 2023 City of Colorado Springs on behalf of the Colorado Springs Utilities. All rights reserved. This work, and/or the data contained hereon, may not be modified, republished, used to prepare derivative works or commercially exploited in any manner without the prior express written consent of the City of Colorado Springs. This work was prepared utilizing the best data available at the time of creation. Neither the City of Colorado Springs, the Colorado Springs Utilities, nor any of their employees makes any warranty, express or implied, or assumes any legal liability or responsibility for accuracy, completeness, or usefulness of any data contained hereon. The City of Colorado Springs, Colorado Springs Utilities, and their employees explicitly disclaim any responsibility for the data contained hereon.



1: 1,128

