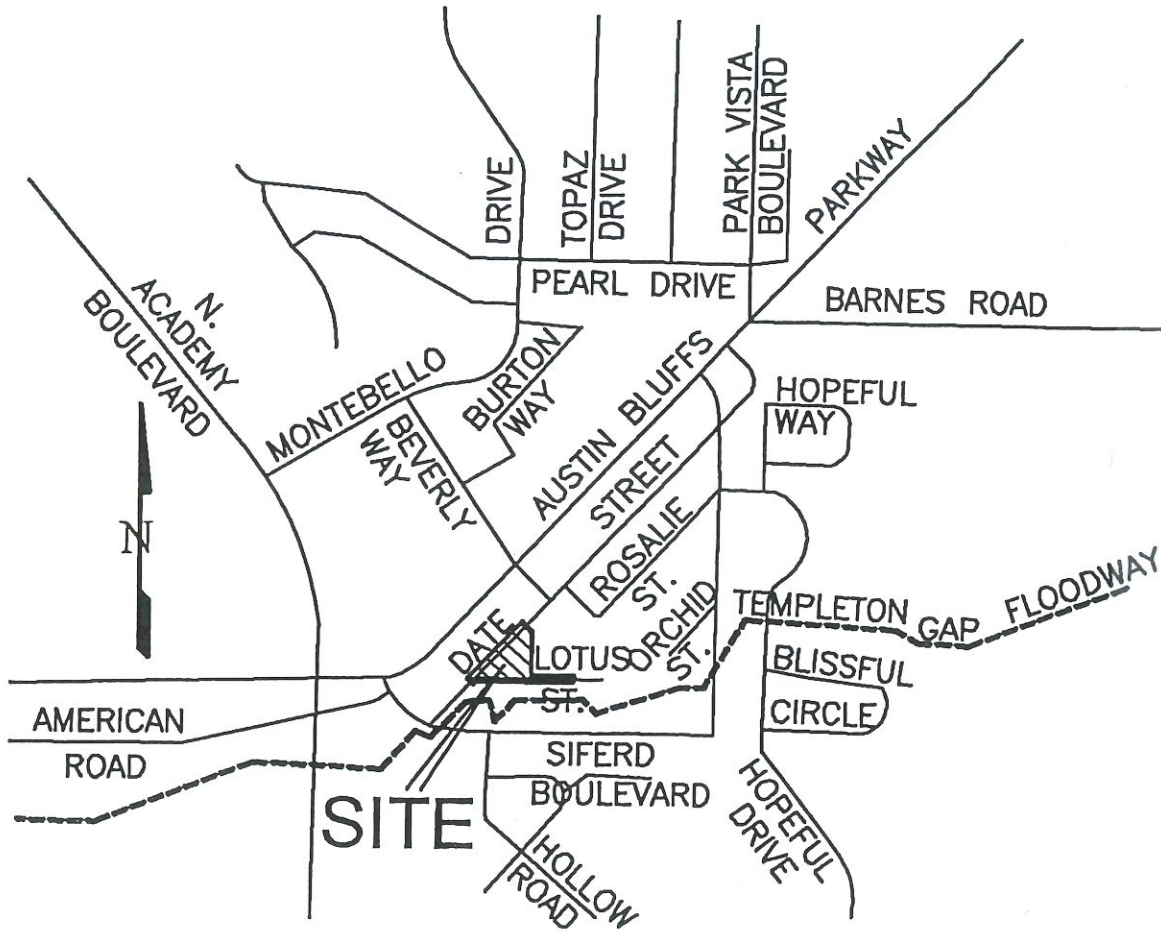


# ANNEXATION PLAT NEAGLE-DUTCHER FAMILY ADDITION

AN ANNEXATION OF A PORTION OF THE NORTHWEST QUARTER OF SECTION 26, TOWNSHIP 13 SOUTH,  
RANGE 66 WEST OF THE 6TH P.M., TO THE CITY OF COLORADO SPRINGS, EL PASO COUNTY, COLORADO



**VICINITY MAP**  
(NOT TO SCALE)