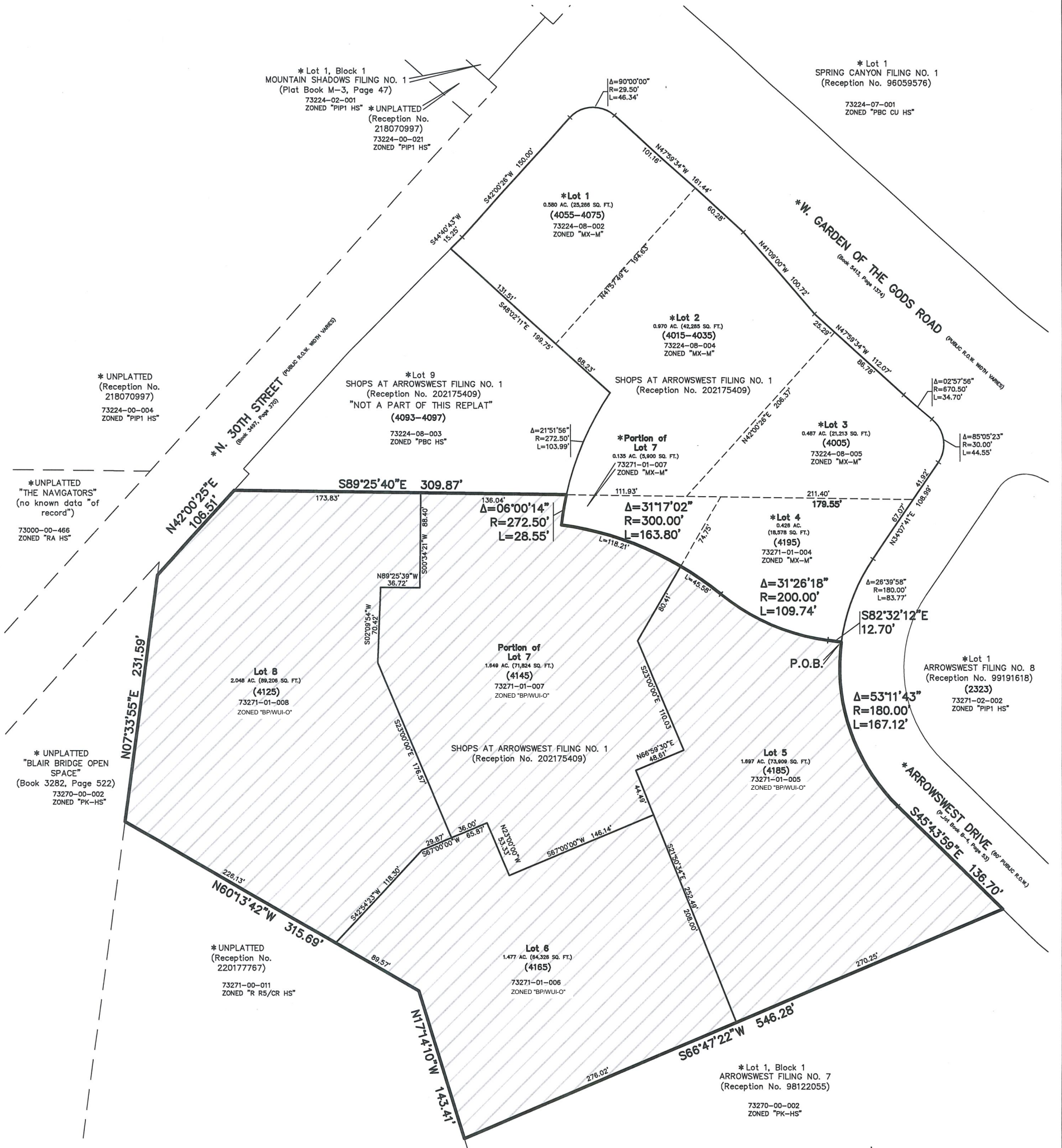
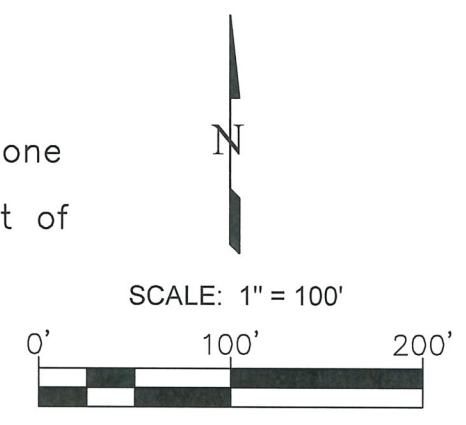


ARROWSWEST APARTMENTS ZONE CHANGE EXHIBIT ... EXHIBIT "B"



SITE DATA:
 EXISTING ZONING: **BP/WUI-O**
 (Business Park with
 Wildland Urban Interface Overlay)
 PROPOSED ZONING: **MX-M/WUI-O**
 (Mixed Use Medium Scale with
 Wildland Urban Interface Overlay)
 AREA = 6.870 Acres
 Sheet 2 of 2

LEGEND:
 - Indicates "MX-M" Zone
 * - Indicates not a part of this Zone Change



CITY FILE NO. ZONE-24-0004

Land Development Consultants, Inc.
 PLANNING · SURVEYING
 www ldc-inc.com · TEL: (719) 528-6133 · FAX: (719) 528-6848
 3898 MAIZELAND ROAD · COLORADO SPRINGS, CO 80909

DWN BY: HFW	DATE: 05/21/24
CK'D BY: DVH	REF. NO.: ARROWSWESTAP

NOTE: This EXHIBIT does not represent a monumented land survey, and is only intended to depict the LEGAL DESCRIPTION.

REVISIONS			
NO.	DESCRIPTION	DATE	BY
1	DATA CLARIFICATION	5/29/24	DVH
PROJECT NUMBER 21043			