

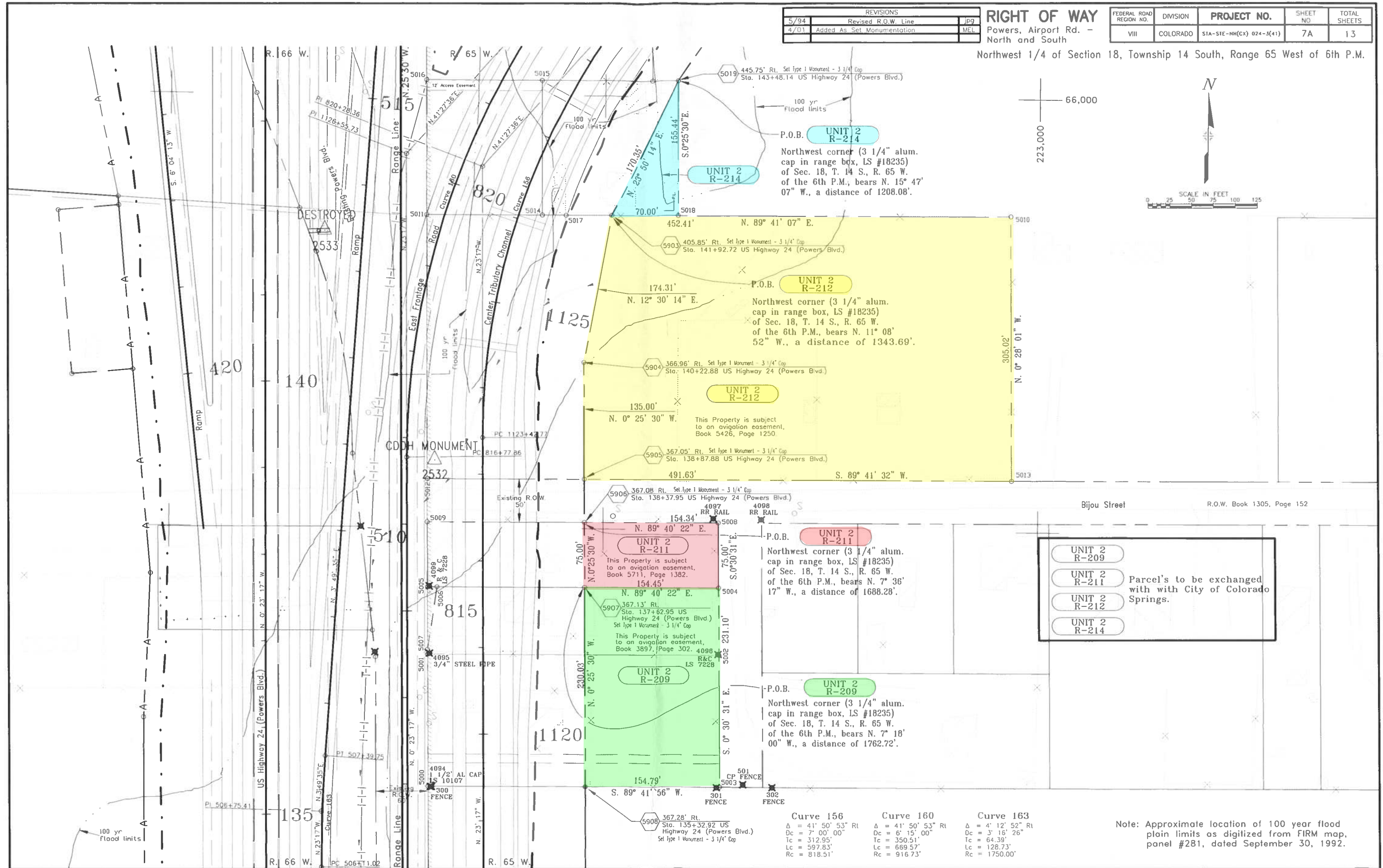
# EXHIBIT A-2

REVISIONS		
5/94	Revised R.O.W. Line	JP9
4/01	Added As. Set Monumentation	MEL

**RIGHT OF WAY**  
Powers, Airport Rd. -  
North and South

FEDERAL ROAD REGION NO.	DIVISION	PROJECT NO.	SHEET NO.	TOTAL SHEETS
VIII	COLORADO	S1A-S1E-NH(CX) 024-3(41)	7A	13

Northwest 1/4 of Section 18, Township 14 South, Range 65 West of 6th P.M.



Note: Approximate location of 100 year flood plain limits as digitized from FIRM map, panel #281, dated September 30, 1992.

12/20/95 10:48:52 D:\PROJECTS\9130302\SHEET\_7A 9130302 Garciojp

Curve 156	Curve 160	Curve 163
Δ = 41° 50' 53" Rt	Δ = 41° 50' 53" Rt	Δ = 4° 12' 52" Rt
Dc = 7° 00' 00"	Dc = 6° 15' 00"	Dc = 3° 16' 26"
Tc = 312.95'	Tc = 350.51'	Tc = 64.39'
Lc = 597.83'	Lc = 669.57'	Lc = 128.73'
Rc = 818.51'	Rc = 916.73'	Rc = 1750.00'