





# SOUTHERN COLORADO RAIL PARK

## CITY OF COLORADO SPRINGS, COLORADO

### LAND USE PLAN



N.E.S. Inc.  
619 N. Cascade Avenue, Suite 200  
Colorado Springs, CO 80903  
Tel: 719.471.0073  
Fax: 719.471.0267  
www.nescolorado.com  
© 2012. All Rights Reserved.

PLANNER / LANDSCAPE ARCHITECT



## SOUTHERN COLORADO RAIL PARK

### LAND USE PLAN

EAST OF FORT CARSON, WEST OF I-25,  
SOUTH OF CHARTER OAK RANCH ROAD

DATE: 11/19/2024  
PROJECT NBR: A. BARLOW  
PREPARED BY: J.A. SMITH

ISSUE NBR

ISSUE NBR

DATE: 12.20.2024  
BY: TK  
DESCRIPTION: PER CITY REVIEW COMMENTS

DATE: 01.28.2025  
BY: JS  
DESCRIPTION: PER CITY REVIEW COMMENTS

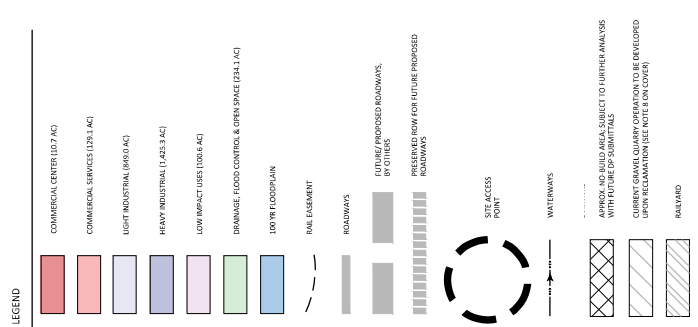
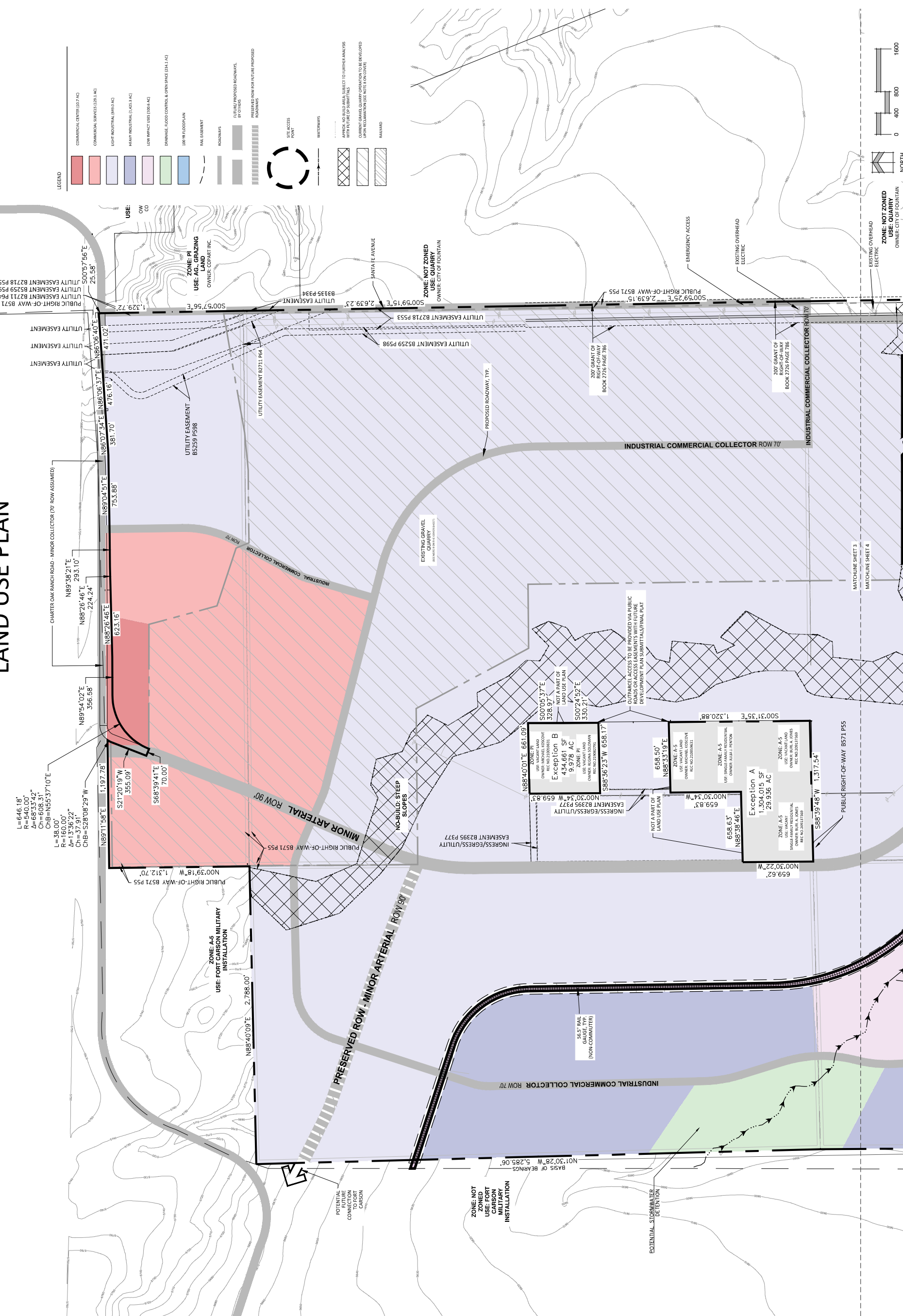
ISSUE / REVISION

### LAND USE PLAN

# 3

3 OF 6

PDZL-24-0006



P:\Dev\_C\_Levy\_Co-ops\_Schmidt\_Construction\_Company\Fountain\_Railroad\_Project\Drawings\Planning\Southern\_Colorado\_Rail\_Park\DWG [Sheet: Plan (3)] 1/28/2025 7:11:58 AM jsmith



# SOUTHERN COLORADO RAIL PARK

## CITY OF COLORADO SPRINGS, COLORADO

### LAND USE PLAN



N.E.S. Inc.  
619 N. Cascade Avenue, Suite 200  
Colorado Springs, CO 80903  
Tel: 719.471.0073  
Fax: 719.471.0267  
www.nescolorado.com  
© 2012. All Rights Reserved.

PLANNER / LANDSCAPE ARCHITECT



## SOUTHERN COLORADO RAIL PARK

### LAND USE PLAN

EAST OF FORT CARSON, WEST OF I-25,  
SOUTH OF CHARTER OAK RANCH ROAD

DATE: 11/19/2024  
PROJECT NBR: A. BARLOW  
PREPARED BY: J. SUTIN

ISSUE NBR

ISSUE NBR

DATE: 12.20.2024  
BY: TK  
DESCRIPTION: PER CITY REVIEW COMMENTS

DATE: 01.28.2025  
BY: JS  
DESCRIPTION: PER CITY REVIEW COMMENTS

ISSUE / REVISION

### LAND USE PLAN

# 5

5 OF 6

PDZL-24-0006

