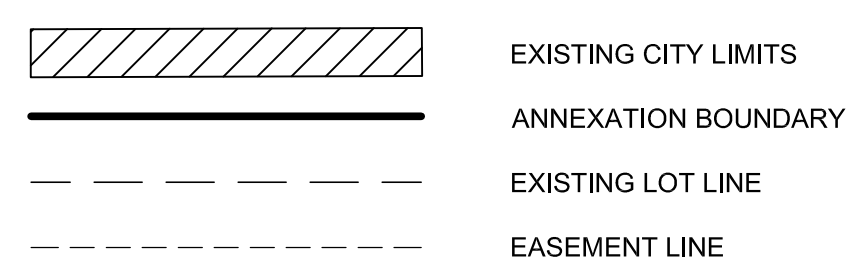
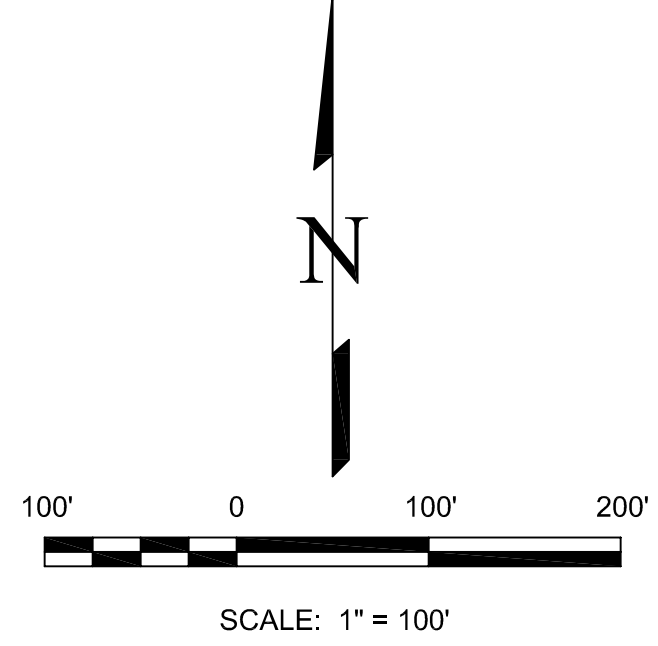
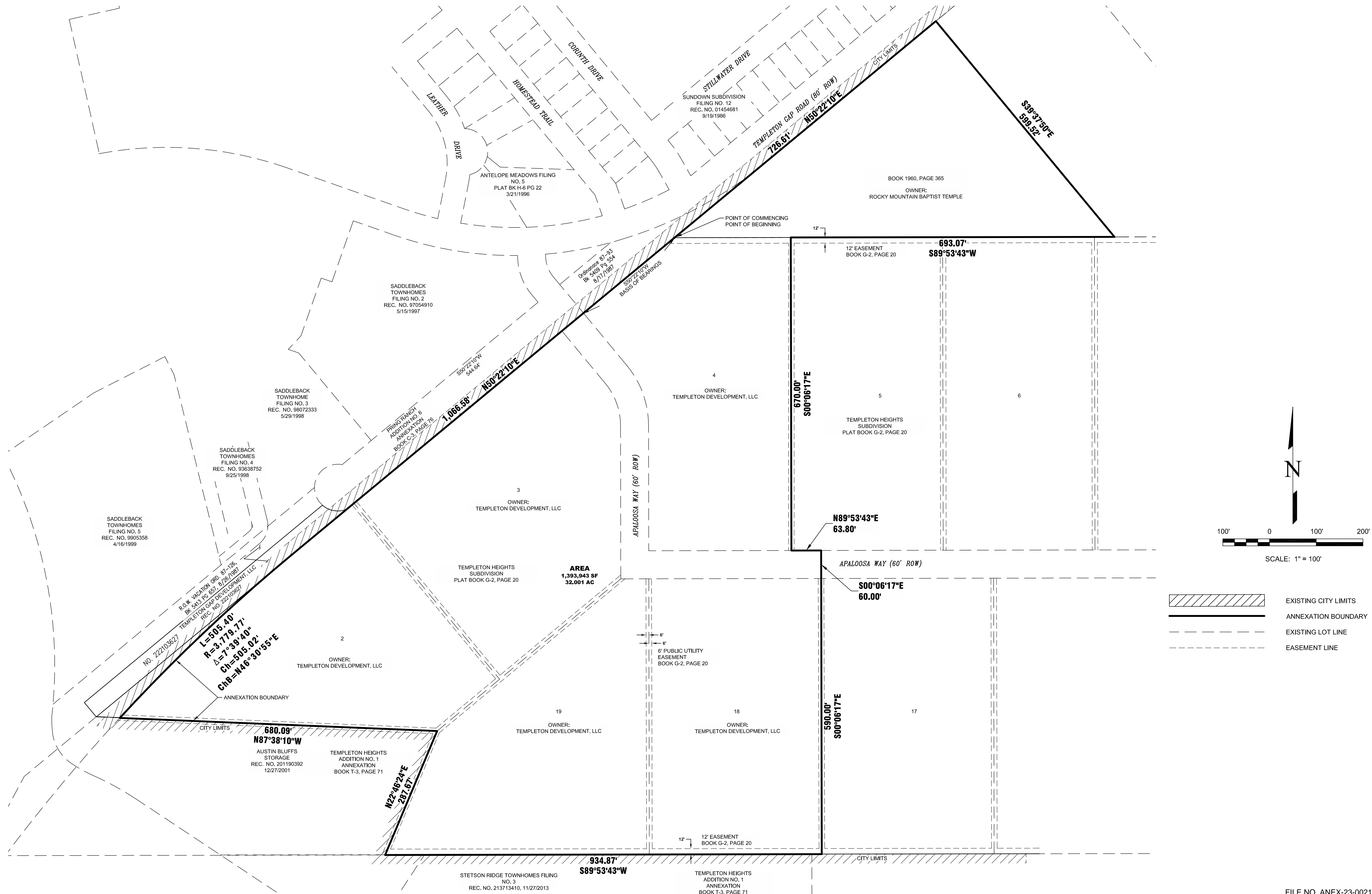


ANNEXATION PLAT

SUMMIT VIEW ADDITION NO. 1

LOCATED IN THE SOUTH HALF OF SECTION 13, TOWNSHIP 13 SOUTH RANGE 66 WEST,
OF THE 6TH P.M, COUNTY OF EL PASO, STATE OF COLORADO



NO.	REVISIONS	DESCRIPTION	DATE

EDWARD-JAMES SURVEYING, INC.
 926 Elkton Drive
 Colorado Springs, CO 80907
 Office: (719) 576-1216
 Fax: (719) 576-1206

4732 Eagleridge Circle
 Pueblo, CO 81008
 Office: (719) 545-6240
 Fax: (719) 545-6247



ANNEXATION PLAT
SUMMIT VIEW ADDITION NO. 1

LOCATED IN THE SOUTH HALF OF SECTION 13, TWP 13S R66W
OF THE 6TH P.M, COUNTY OF EL PASO, STATE OF COLORADO

DRAWN BY	JWT
CHECKED BY	ERF
H-SCALE	1" = 100'
JOB NO.	2445-00
DATE CREATED	6/9/2023
DATE ISSUED	DRAFT
SHEET NO	2 OF 2

FILE NO. ANEX-23-0021