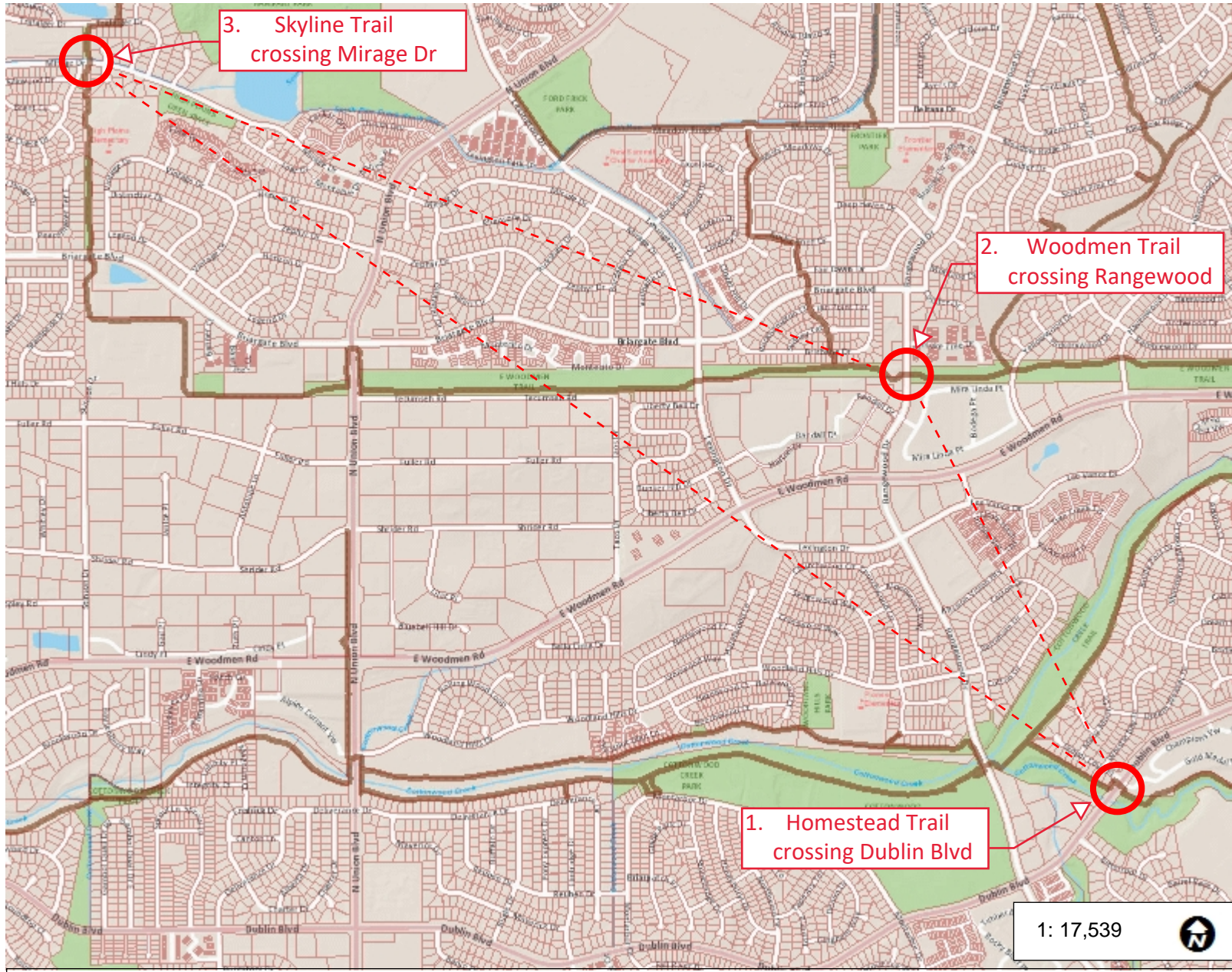
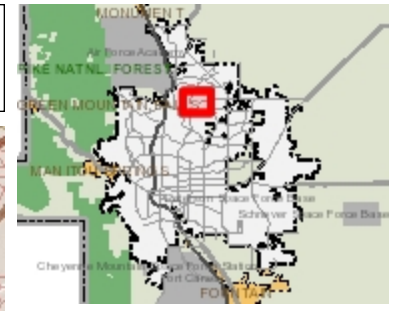




City of Colorado Springs



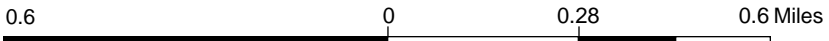
Legend

- Parcels
- Urban Trails**
 - Existing Urban Trail
 - Planned Urban Trail

Notes

MMOF Three Trail Crossings Project:

- ① Homestead Trail crossing Dublin
- ② Woodmen Trail crossing Rangewood
- ③ Skyline Trail crossings Mirage



1: 17,539

NAD_1983_StatePlane_Colorado_Central_FIPS_0502_Feet
© Latitude Geographics Group Ltd.

Copyright © 2024 City of Colorado Springs on behalf of the Colorado Springs Utilities. All rights reserved. This work, and/or the data contained herein, may not be modified, republished, used to prepare derivative works or commercially exploited in any manner without the prior express written consent of the City of Colorado Springs. This work was prepared utilizing the best data available at the time of creation. Neither the City of Colorado Springs, the Colorado Springs Utilities, nor any of their employees makes any warranty, express or implied, or assumes any legal liability or responsibility for accuracy, completeness, or usefulness of any data contained herein. The City of Colorado Springs, Colorado Springs Utilities, and their employees explicitly disclaim any responsibility for the data contained herein.