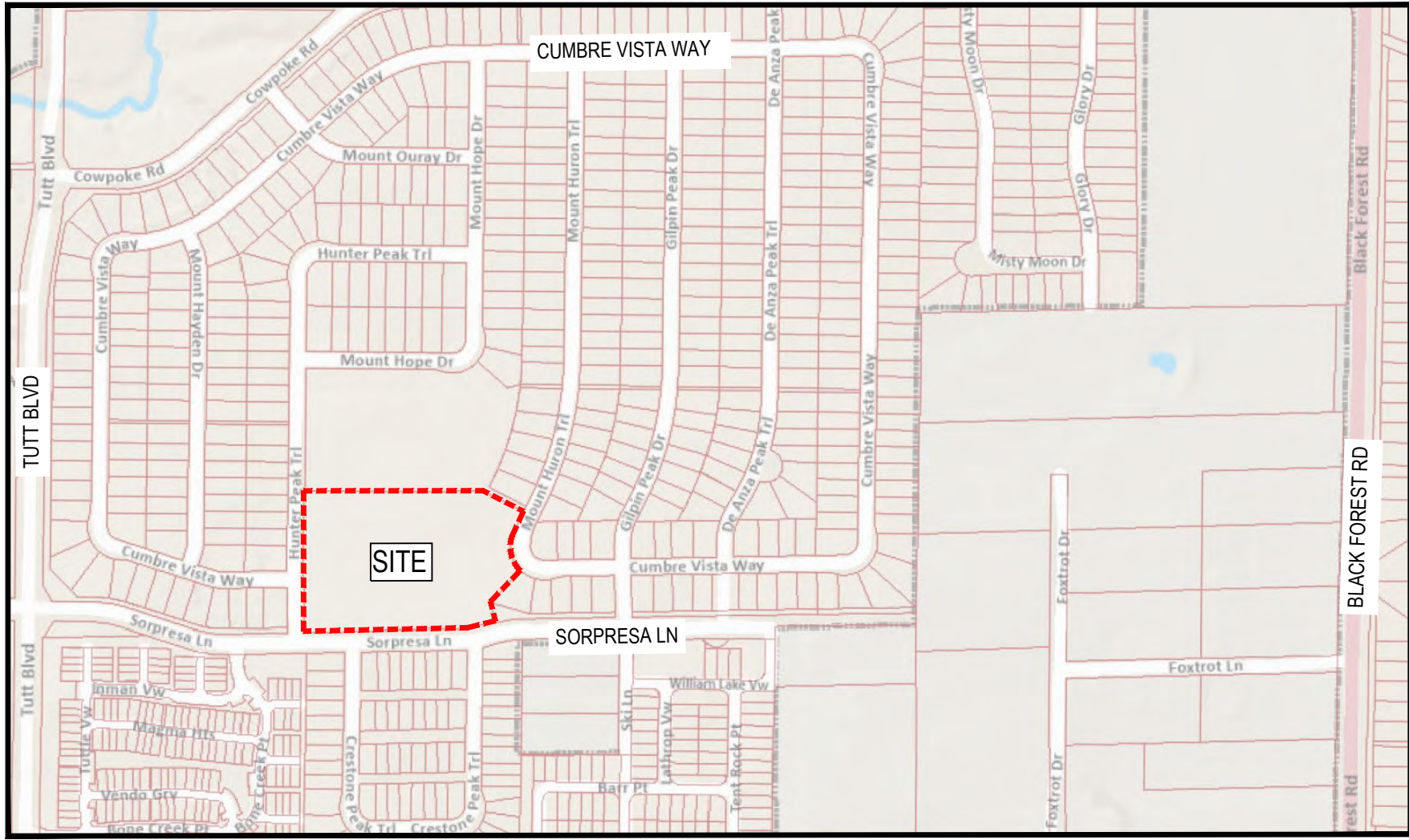


CUMBRE VISTA PARK ZONE CHANGE
CITY OF COLORADO SPRINGS, COLORADO
ZONING MAP AMENDMENT EXHIBIT B



VICINITY MAP

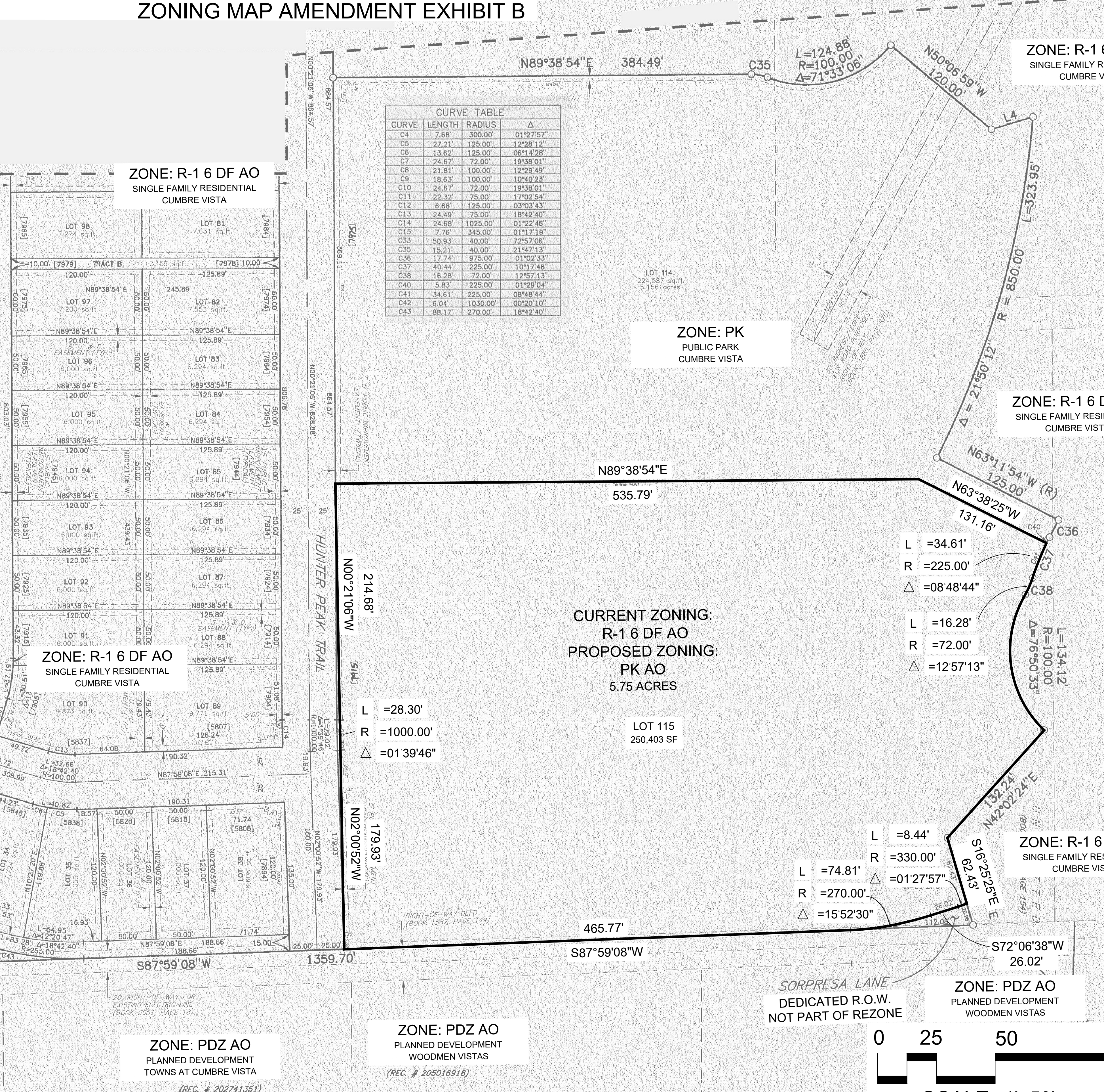
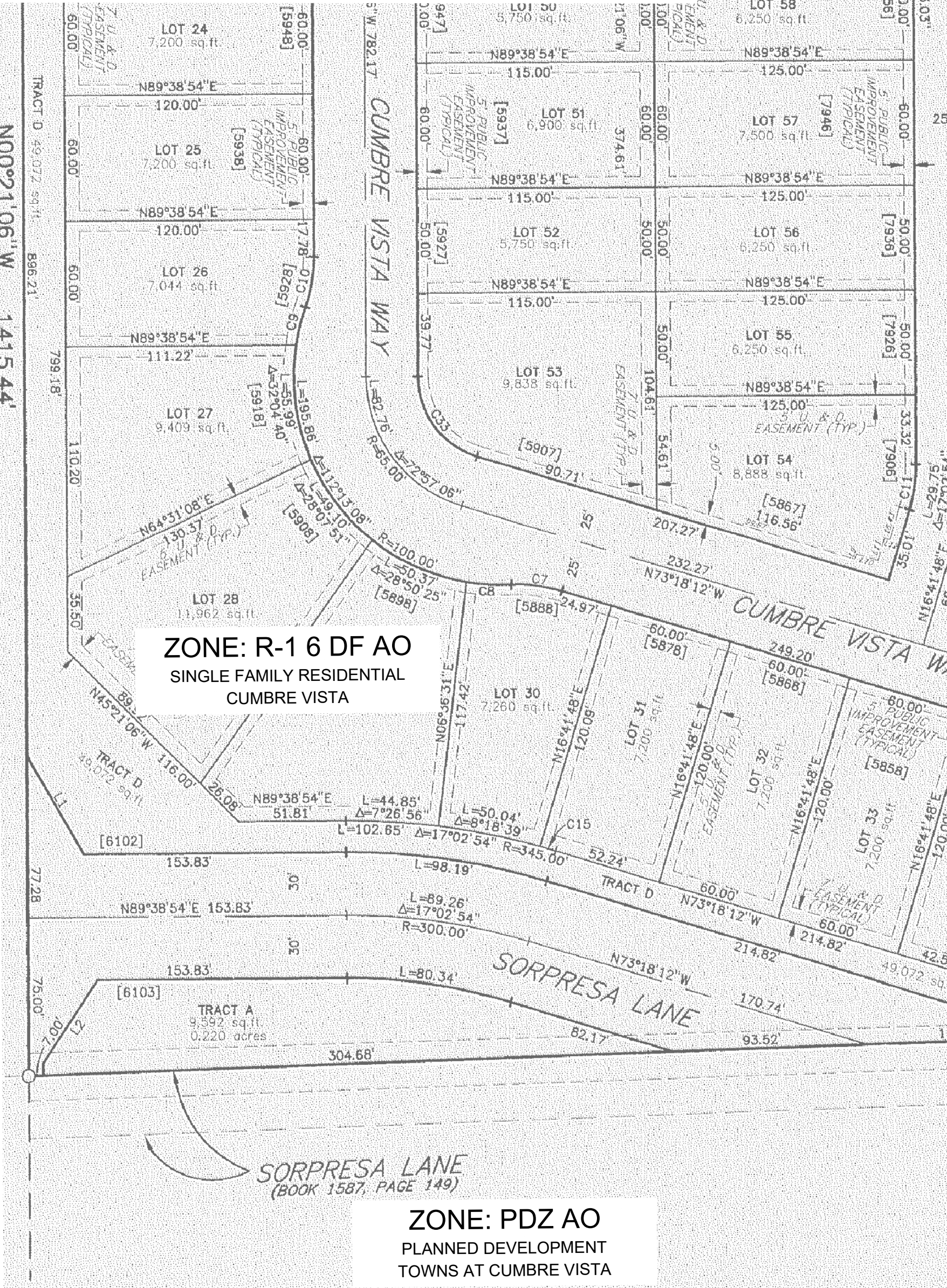
SITE DATA

TAX ID NUMBER: 5306304002

TOTAL AREA: 5.75 ACRES

CURRENT ZONING: R-1 6 DF AO

PROPOSED ZONING: PK AO



CURVE	LENGTH	RADIUS	Δ
C4	7.68'	300.00'	01°27'57"
C5	27.21'	125.00'	12°28'12"
C6	13.62'	125.00'	06°14'28"
C7	24.67'	72.00'	19°38'01"
C8	21.81'	100.00'	12°29'49"
C9	18.63'	100.00'	10°40'23"
C10	24.67'	72.00'	19°38'01"
C11	22.32'	75.00'	17°02'54"
C12	6.88'	125.00'	03°03'43"
C13	24.49'	75.00'	18°42'40"
C14	24.68'	1025.00'	01°22'46"
C15	7.76'	345.00'	01°17'19"
C33	50.93'	40.00'	72°57'06"
C35	15.21'	40.00'	21°47'13"
C36	17.74'	975.00'	01°02'33"
C37	40.44'	225.00'	10°17'48"
C38	16.28'	72.00'	12°57'13"
C40	5.83'	225.00'	01°28'04"
C41	34.61'	225.00'	08°48'44"
C42	6.04'	1030.00'	00°20'10"
C43	88.17'	270.00'	18°42'40"

L =34.61'
R =225.00'
Δ =08 48'44"

L =16.28'
R =72.00'
Δ =12 57'13"

L =8.44'
R =330.00'
Δ =01 27'57"

L =74.81'
R =270.00'
Δ =15 52'30"

