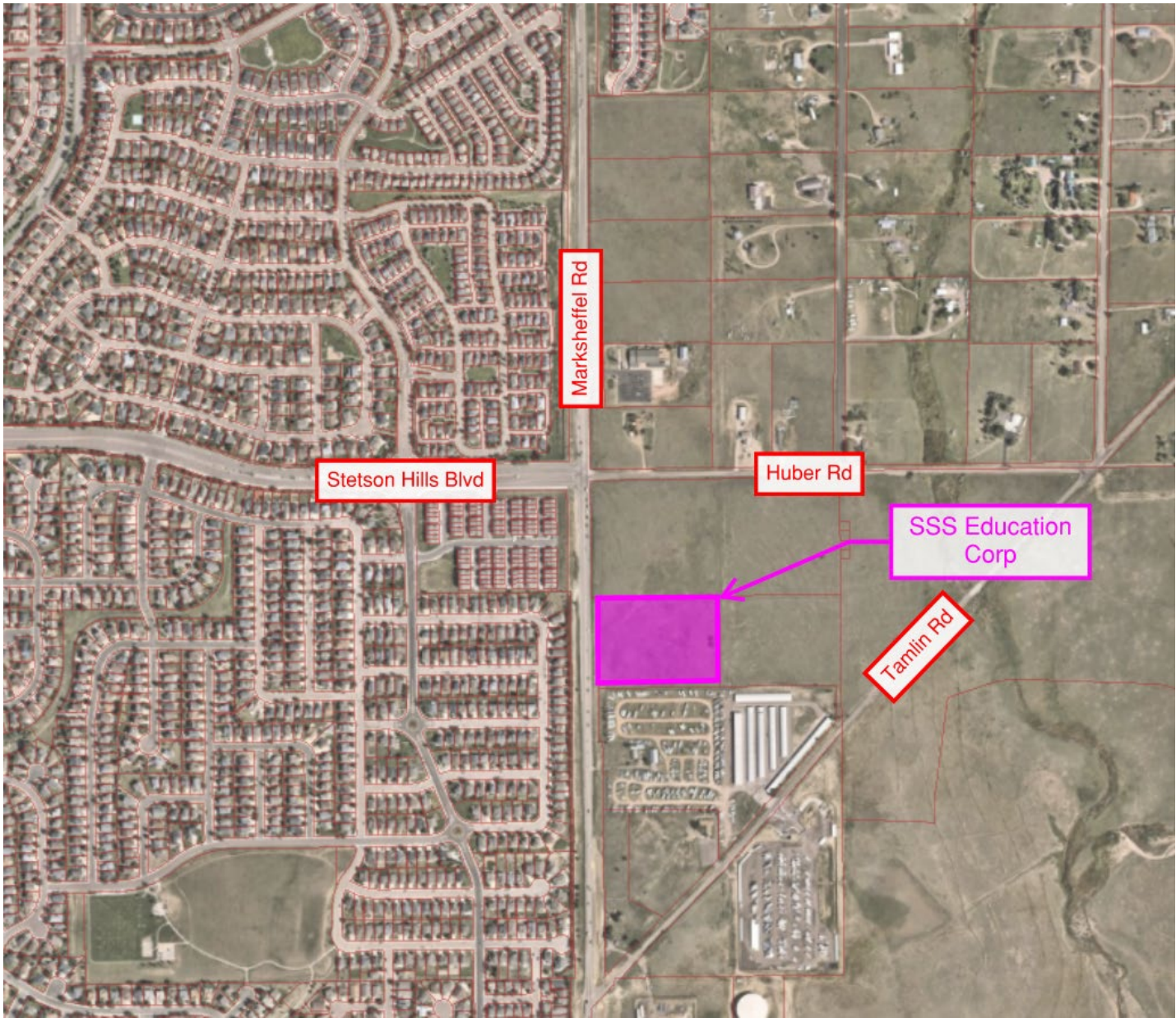


MARKSHEFFEL ROAD IMPROVEMENTS

Property Acquisitions

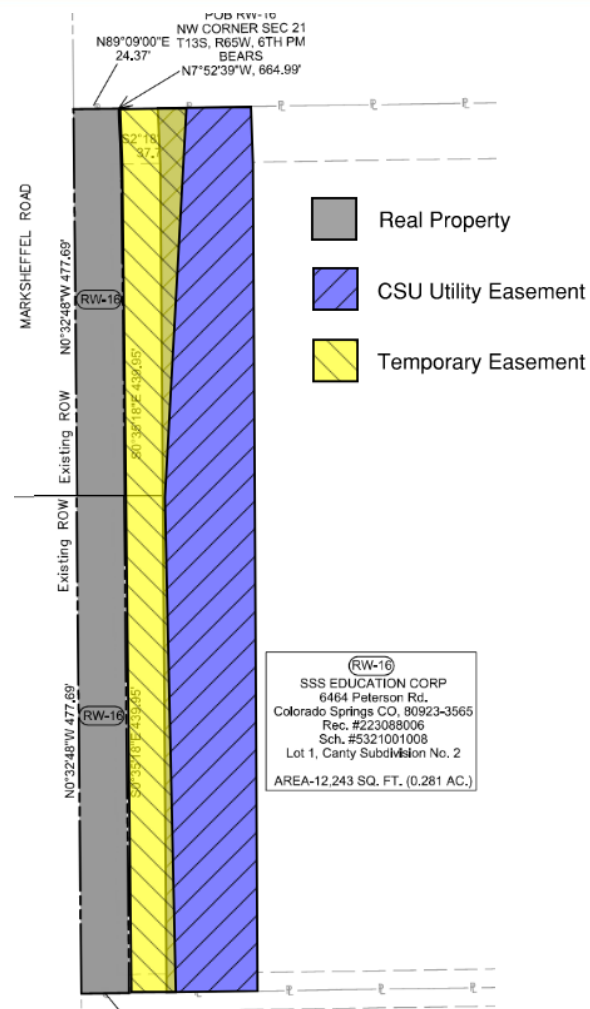


March 10, 2025 Ryan Phipps, PE, Engineering Program Manager/Capital Projects



SSS Education Corp

- Real Property – 12,243 sf
- CSU Utility Easement – 23,885 sf
- Temporary Easement – 11,945 sf



SSS Education Corp

- Real Property Area: 12,243 sf
- CSU Utility Easements Area: 23,885 sf
- Temporary Easements Area: 11,945 sf
- Amount: \$250,900.00

- Acquisitions over \$100,000 must be approved by City Council
- Resolution authorizes staff to execute documents for property conveyance
- PPRTA funding approved for this purchase