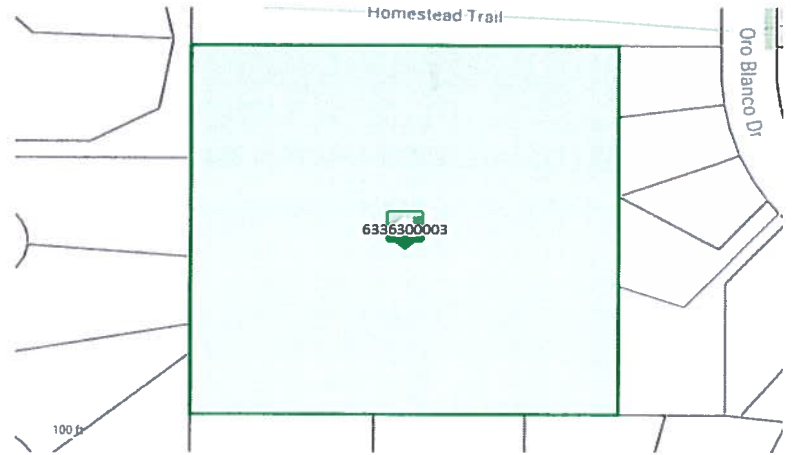


36300003
36-13-66

Total Market Value
\$0



OVERVIEW

Owner:	MOUNTAIN STATES TELEPHONE & <input type="checkbox"/>
Mailing Address:	1801 CALIFORNIA ST STE 4600 DENVER CO, 80202-2664
Location:	36-13-66
Tax Status:	Tax Commish Assessed
Zoning:	R1-6 AO
Lat No:	-
Legal Description:	TRACT IN SW4SW4 SEC 36-13-66 AS FOLS, COM AT SW COR OF SD SEC, TH N ON W LN 588.3 FT FOR POB, CONT NLY 466.7 FT, ANG 90< E 466.7 FT, ANG 90< S 466.7 FT, TH ANG 90< W 466.7 FT TO POB

MARKET & ASSESSMENT DETAILS ?

	2019 Market Value	2019 Assessed Value
Land	\$0	\$0
Improvement	\$0	\$0
Total	\$0	\$0

LAND DETAILS

SEQUENCE NUMBER	LAND USE	ASSESSMENT RATE	AREA	MARKET VALUE
	WAREHOUSE/STORAGE	29.000	5.01 Acres	\$0

BUILDINGS DETAILS

Commercial - COMMERCIAL EQUIP. BUILDING (1) Market Value \$

Assessment Rate	29.00	Sprinkler	N
Bldg #	1	Elevator	N
Use	COMMERCIAL EQUIP. BUILDING	Occup 1	470
Year Built	1972	Occup 2	
Area	208	HVA 1	11
Class	S	HVA 2	
Quality	2.0	Wall Height	8
Stories	1	Land Size	218235
Perimeter	58	Neigh #	208
# Units			

TAX ENTITY AND LEVY INFORMATION

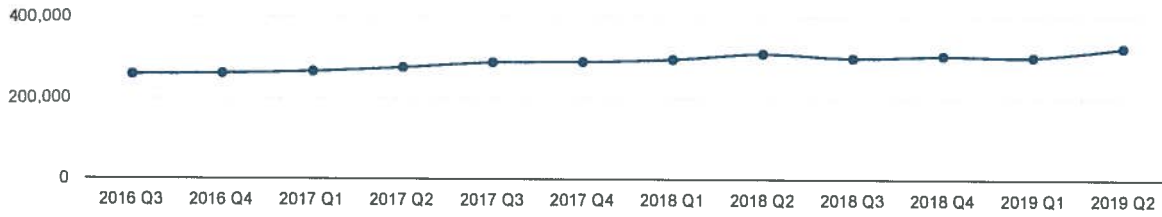
County Treasurer Tax Information

Area Code: FBY Levy Year: 2018 Mill Levy: 73.375

TAXING ENTITY	LEVY	CONTACT NAME/ORGANIZATION	CONTACT PHONE
EL PASO COUNTY	7.738	FINANCIAL SERVICES	(719) 520-6498
PC ROAD & BRIDGE SHARE	0.165	-	(719) 520-6498
CITY OF COLORADO SPRINGS	4.279	CITY OF CS-CFO	(719) 385-5224
PC-COLORADO SPGS ROAD & BRIDGE SHARE	0.165	-	(719) 520-6498
LOLO SPGS SCHOOL NO 11	56.084	GLENN GUSTAFSON	(719) 520-2010
MIKES PEAK LIBRARY	4.000	MIKE VARNET	(719) 531-6333
SOUTHEASTERN COLO WATER CONSERVANCY	0.944	JAMES BRODERICK	(719) 948-2400
EL PASO COUNTY CONSERVATION	0.000	DARRELL A DAVISON	(719) 520-8500

[Click to view Map Sheet 1](#)

Median Residential House Price



Residential Assessed Values

Low
\$194,532 [🔗](#)

Median
\$289,777

High
\$812,604 [🔗](#)

Res. Sales by Type



Residential Sale Prices

Biggest Sale
\$525,000

Average Home Price
\$309,950

Lowest Sale
\$228,000

Disclaimer

We have made a good-faith effort to provide you with the most recent and most accurate information available. However, if you need to use this information in any legal or official venue, you will need to obtain official copies from the Assessor's Office. Do be aware that this data is subject to change on a daily basis. If you believe that any of this information is incorrect, please call us at (719) 520-6600.

EL PASO COUNTY - COLORADO

6336300003
36-13-66

Total Market Value
\$0

OVERVIEW

Owner:	MOUNTAIN STATES TELEPHONE &, TELEGRAPH CO, C/O US WEST COMMUNICATIONS INC
Mailing Address:	1801 CALIFORNIA ST STE 4600 DENVER CO, 80202-2664
Location:	36-13-66
Tax Status:	Tax Commish Assessed
Zoning:	R1-6 AO
Plat No:	-
Legal Description:	TRACT IN SW4SW4 SEC 36-13-66 AS FOLS, COM AT SW COR OF SD SEC, TH N ON W LN 588.3 FT FOR POB, CONT NLY 466.7 FT, ANG 90< E 466.7 FT, ANG 90< S 466.7 FT, TH ANG 90< W 466.7 FT TO POB

MARKET & ASSESSMENT DETAILS

	2019 Market Value	2019 Assessed Value
Land	\$0	\$0
Improvement	\$0	\$0
Total	\$0	\$0

COMMERCIAL - COMMERCIAL EQUIP. BUILDING (1)

Market Value \$0

Assessment Rate	29.00	Sprinkler	N
Bldg #	1	Elevator	N
Use	COMMERCIAL EQUIP. BUILDING	Occup 1	470
Year Built	1972	Occup 2	
Area	208	HVA 1	11
Class	S	HVA 2	
Quality	2.0	Wall Height	8
Stories	1	Land Size	218235
Perimeter	58	Neigh #	208
# Units			

LAND DETAILS

Sequence Number	Land Use	Assessment Rate	Area	Market Value
1	WAREHOUSE/STORAGE	29.000	5.01 Acres	\$0

TAX ENTITY AND LEVY INFORMATION

County Treasurer Tax Information

Tax Area Code: **FBY** Levy Year: **2018** Mill Levy: **73.375**

Taxing Entity	Levy	Contact Name/Organization	Contact Phone
EL PASO COUNTY	7.738	FINANCIAL SERVICES	(719) 520-6498
EPC ROAD & BRIDGE SHARE	0.165	-	(719) 520-6498
CITY OF COLORADO SPRINGS	4.279	CITY OF CS-CFO	(719) 385-5224
EPC-COLORADO SPGS ROAD & BRIDGE SHARE	0.165	-	(719) 520-6498
COLO SPGS SCHOOL NO 11	56.084	GLENN GUSTAFSON	(719) 520-2010
PIKES PEAK LIBRARY	4.000	MIKE VARNET	(719) 531-6333
SOUTHEASTERN COLO WATER CONSERVANCY	0.944	JAMES BRODERICK	(719) 948-2400
EL PASO COUNTY CONSERVATION	0.000	PAMELA DAVISON	(719) 632-9598

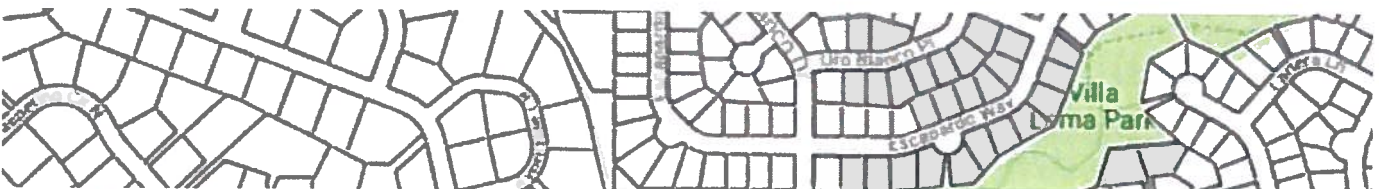


FIGURE 14



Disclaimer

We have made a good-faith effort to provide you with the most recent and most accurate information available. However, if you need to use this information in any legal or official venue, you will need to obtain official copies from the Assessor's Office. Do be aware that this data is subject to change on a daily basis. If you believe that any of this information is incorrect, please call us at (719) 520-6600 .