

CORDERA COMMERCIAL SOUTH CITY OF COLORADO SPRINGS EXHIBIT "B" ZONE CHANGE EXHIBIT PARCEL B



CONSULTANT
PLANNER/CIVIL ENGINEER

Matrix
DESIGN GROUP
2435 Research Parkway, Suite 300
Colorado Springs, CO 80920
Phone: 719-575-5100
Fax: 719-575-5208

PROJECT:
CORDERA COMMERCIAL SOUTH
ZONE CHANGE
CITY OF COLORADO SPRINGS
AUGUST 21, 2019

OWNER:
HIGH VALLEY LAND CO. INC.
1755 TELSTAR DRIVE, SUITE 211
COLORADO SPRINGS, COLORADO 80920
(719) 260-7477

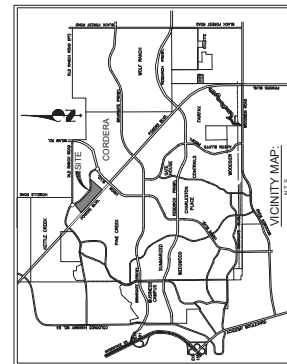
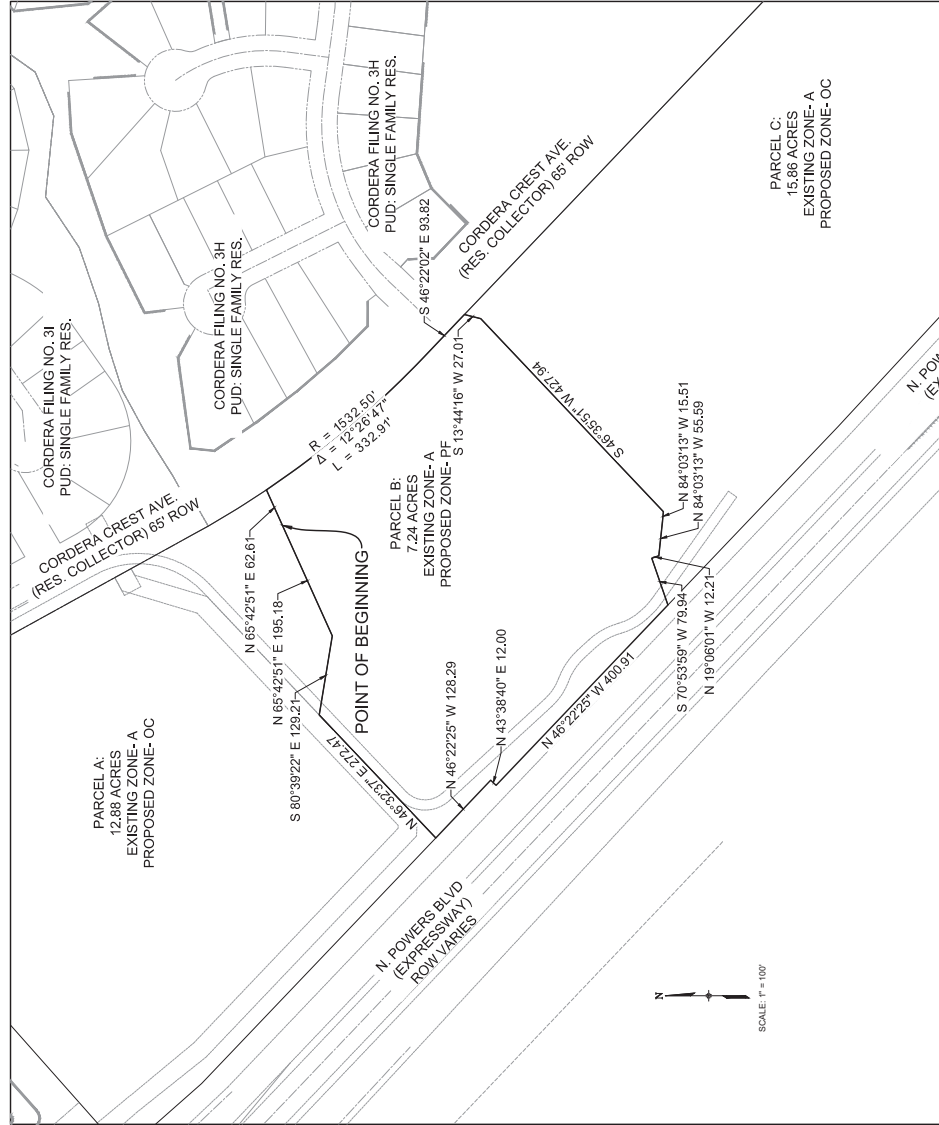
REUSE: AUGUST 21, 2019

DRAWING INFORMATION:
PROJECT NO. 19-00-002
DRAWN BY: JASON ALVINE
CHECKED BY: GREG SHANER
APPROVED BY: GREG SHANER
SHEET TITLE:

ZONE CHANGE

CITY PLANNING FILE NO.

SHEET 3 OF 3



CPC ZC 19-00071