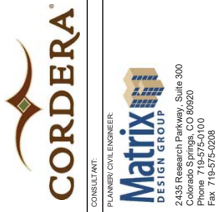
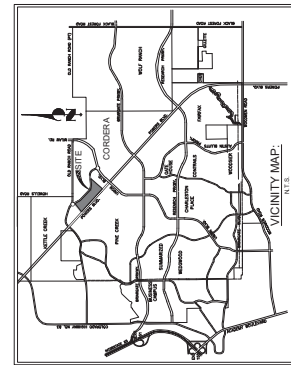
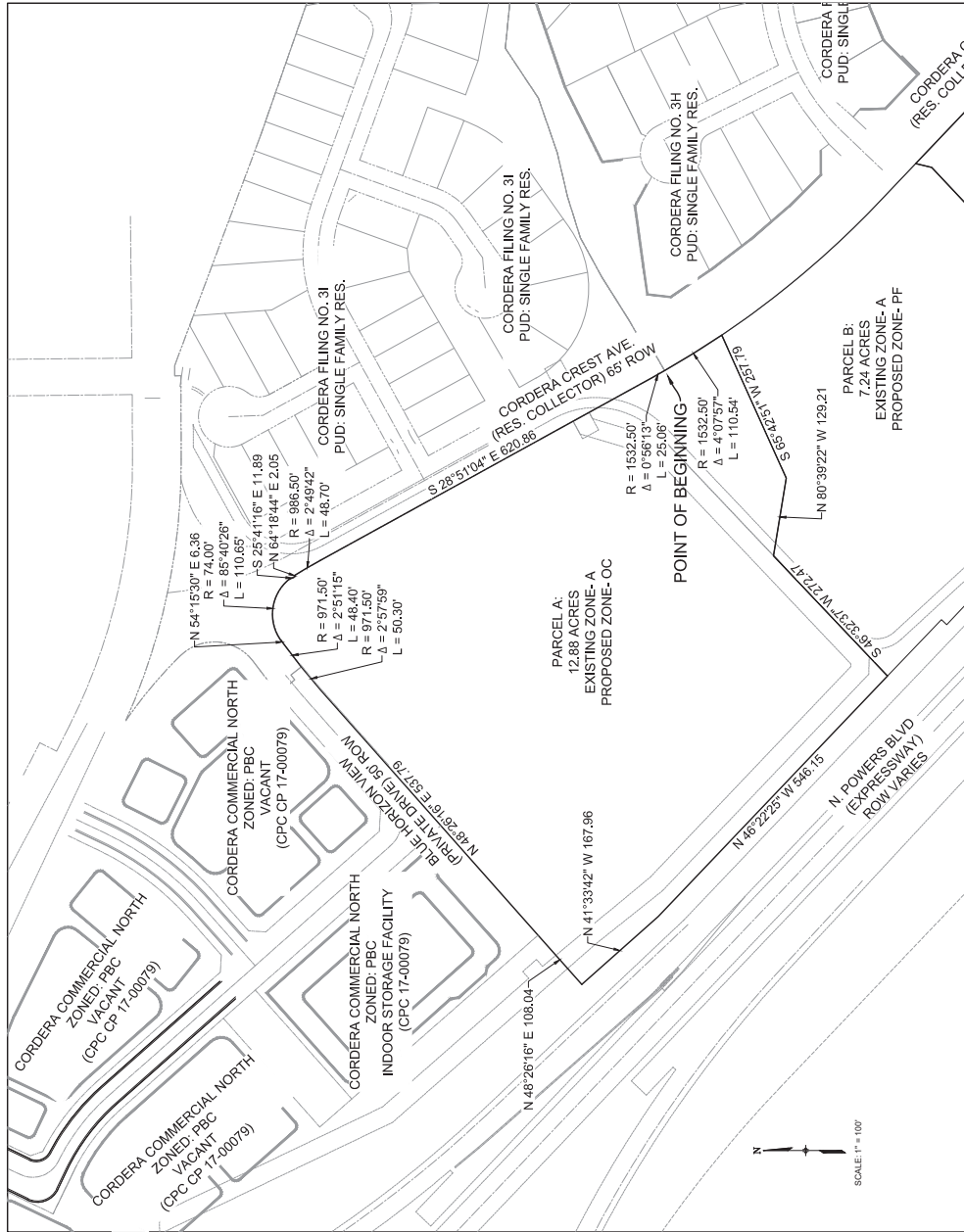


# CORDERA COMMERCIAL SOUTH

## CITY OF COLORADO SPRINGS

### EXHIBIT "B"

# ZONE CHANGE EXHIBIT PARCEL A



**CONSULTANT**  
**PLANNER/CIVIL ENGINEER**  
**Matrix DESIGN GROUP**  
 2435 Research Parkway, Suite 300  
 Colorado Springs, CO 80920  
 Phone: 719-575-5250  
 Fax: 719-575-5208

**PROJECT:**  
 CORDERA COMMERCIAL SOUTH  
 ZONE CHANGE  
 CITY OF COLORADO SPRINGS  
 AUGUST 21, 2019

**OWNER:**  
 HIGH VALLEY LAND CO., INC.  
 1755 TELSTAR DRIVE, SUITE 211  
 COLORADO SPRINGS, COLORADO 80920  
 (719) 260-7477

**DATE:** AUGUST 21, 2019

**DRAWING INFORMATION:**  
 PROJECT NO. 19-00070  
 DRAWN BY: JASON ALVINE  
 CHECKED BY: GREG SHANER  
 APPROVED BY: GREG SHANER  
 SHEET TITLE:

**ZONE CHANGE**

**CITY PLANNING FILE NO.**

**SHEET 3 OF 3**

**CPC ZC 19-00070**