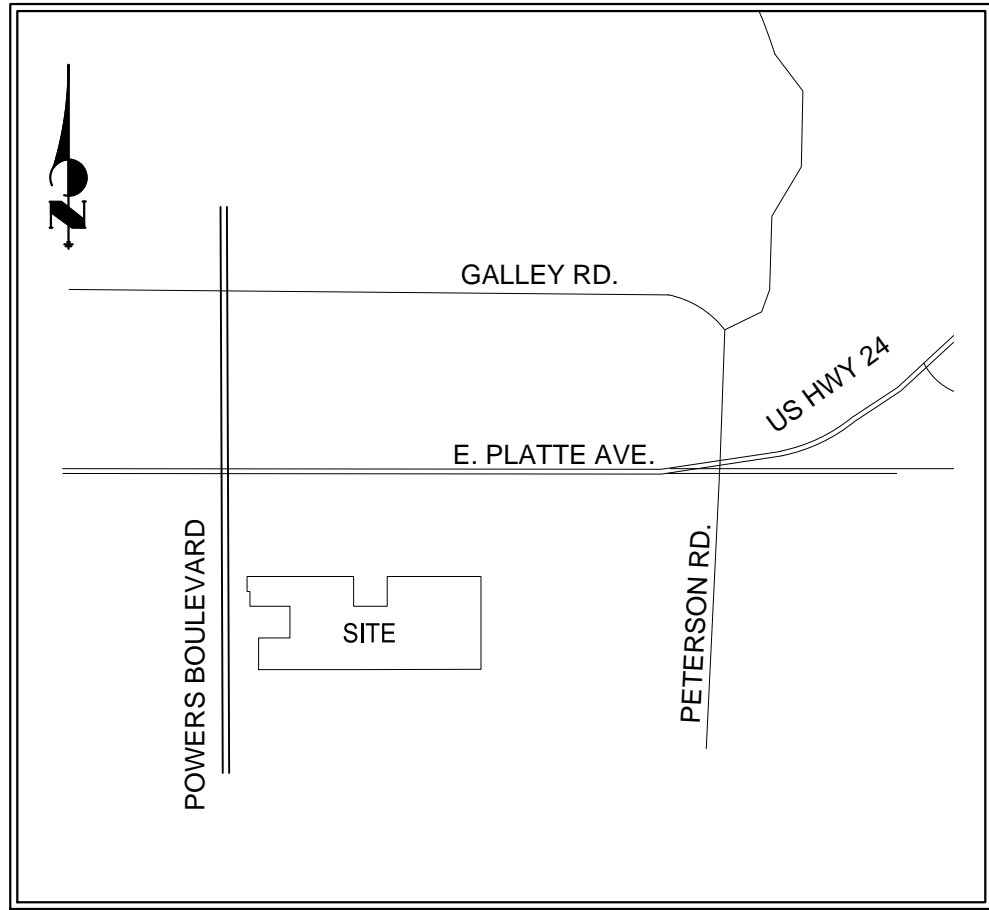


ANNEXATION PLAT AIRPORT ANNEXATION FILING 3

A PORTION OF THE NORTHWEST ONE-QUARTER OF SECTION 18, TOWNSHIP 14 SOUTH, RANGE 65 WEST OF THE 6TH P.M. EL PASO COUNTY, COLORADO



VICINITY MAP:
N.T.S.

KNOW ALL MEN BY THESE PRESENTS:

THAT THE CITY OF COLORADO SPRINGS, A MUNICIPAL CORPORATION BEING THE OWNER OF THE FOLLOWING DESCRIBED PARCEL OF LAND:

A PARCEL OF LAND LOCATED IN THE NORTHWEST ONE-QUARTER OF SECTION 18, TOWNSHIP 14 SOUTH, RANGE 65 WEST OF THE 6TH PRINCIPAL MERIDIAN, COUNTY OF EL PASO, STATE OF COLORADO, MORE PARTICULARLY DESCRIBED AS FOLLOWS WITH BEARINGS REFERENCED TO THE SOUTH LINE OF THE SAID NORTHWEST ONE-QUARTER; MONUMENTED ON THE WEST END BY A REBAR AND 3-1/4" ALUMINUM CAP STAMPED "DB & CO PLS 22573" AND ON THE EAST END BY A FOUND REBAR AND 3-1/4" ALUMINUM CAP STAMPED "MERRICK & COMPANY LS 13155" APPROPRIATELY STAMPED FOR THE CENTER OF SECTION, BEARING SOUTH 89°54'10" WEST 2699.41 FEET:

COMMENCE AT THE EAST END OF THE SAID SOUTH LINE OF THE SAID NORTHWEST ONE-QUARTER;

THENCE NORTH 00°04'28" EAST, ALONG THE EAST LINE OF THE SAID NORTHWEST ONE-QUARTER, A DISTANCE OF 657.78 FEET TO THE SOUTHEAST CORNER OF THE NORTH ONE-HALF OF THE SOUTHEAST ONE-QUARTER OF THE NORTHWEST ONE-QUARTER OF SAID SECTION 18 ALSO BEING THE **POINT OF BEGINNING**;

THENCE SOUTH 89°56'50" WEST, ALONG SAID SOUTH LINE A DISTANCE OF 1,326.18 FEET TO THE SOUTHEAST CORNER OF THE NORTH ONE-HALF OF THE SOUTHWEST ONE-QUARTER OF THE NORTHWEST ONE-QUARTER OF SAID SECTION 18;

THENCE CONTINUE SOUTH 89°56'50" WEST, ALONG THE SOUTH LINE OF SAID NORTH ONE-HALF, A DISTANCE OF 660.00 FEET TO THE EAST LINE OF THE WEST 330 OF THE EAST 990 FEET OF SAID NORTH ONE-HALF;

THENCE CONTINUE SOUTH 89°56'50" WEST, ALONG THE SOUTH LINE OF SAID NORTH ONE-HALF, A DISTANCE OF 330.00 FEET TO THE WEST LINE OF THE WEST 330 OF THE EAST 990 FEET OF SAID NORTH ONE-HALF;

THENCE NORTH 00°00'55" EAST, ALONG THE WEST LINE OF THE WEST 330 OF THE EAST 990 FEET OF SAID NORTH ONE-HALF, A DISTANCE OF 354.78 FEET TO THE NORTH LINE OF THE BIJOU STREET RIGHT-OF-WAY, SAID LINE BEING PARALLEL WITH AND 25.00 FEET NORTHERLY OF THE SOUTH LINE OF THE NORTH ONE-HALF OF THE NORTHWEST ONE-QUARTER OF THE SOUTHWEST ONE-QUARTER OF THE NORTHWEST ONE-QUARTER OF SAID SECTION 18;

THENCE NORTH 89°58'05" EAST, ALONG SAID PARALLEL LINE, A DISTANCE OF 325.09 FEET TO THE EAST LINE OF THE NORTHWEST ONE-QUARTER OF THE SOUTHWEST ONE-QUARTER OF THE NORTHWEST ONE-QUARTER OF SAID SECTION18;

THENCE NORTH 00°00'42" WEST, ALONG SAID EAST LINE, A DISTANCE OF 304.67 FEET TO THE SOUTH LINE OF THE SOUTHWEST ONE-QUARTER OF THE NORTHWEST ONE-QUARTER OF THE NORTHWEST ONE-QUARTER OF SAID SECTION 18;

THENCE SOUTH 89°59'31" WEST, ALONG SAID SOUTH LINE, A DISTANCE OF 418.28 FEET TO A REBAR AND ALUMINUM CAP STAMPED "PCI PLS 27605" MARKING THE EAST LINE OF THAT CERTAIN PARCEL DESCRIBED IN A DOCUMENT RECORDED IN THE OFFICE OF THE EL PASO COUNTY CLERK AND RECORDER IN BOOK 1424 PAGE 173 ;

THENCE NORTH 00°04'13" EAST, ALONG SAID EAST LINE, A DISTANCE OF 154.48 FEET TO A REBAR WITH 3-1/4" ALUMINUM CAP STAMPED "ROW MARKER" MARKING THE NORTH LINE OF SAID PARCEL DESCRIBED IN BOOK 1424 PAGE 173;

THENCE NORTH 88°26'33" WEST, ALONG THE NORTH LINE OF SAID PARCEL DESCRIBED IN BOOK 1424 PAGE 173 A DISTANCE OF 30.20 FEET TO A REBAR AND ALUMINUM CAP STAMPED "PCI PLS 27605" MARKING THE EAST LINE OF THE WEST 290 FEET OF GOVERNMENT LOT 1 OF SAID SECTION 18;

THENCE NORTH 00°00'06" EAST, ALONG SAID EAST LINE, A DISTANCE OF 154.36 FEET TO THE SOUTH LINE OF THAT CERTAIN PARCEL OF LAND DESCRIBED IN A DOCUMENT RECORDED IN THE OFFICE OF THE EL PASO COUNTY CLERK AND RECORDER IN BOOK 1288 PAGE 295;

THENCE SOUTH 89°58'37" EAST, ALONG SAID SOUTH LINE, A DISTANCE OF 650.13 FEET TO A NO. 5 REBAR WITH A PLASTIC CAP STAMPED "PLS 13830" MARKING THE SOUTHWEST CORNER OF THAT CERTAIN PARCEL OF LAND DESCRIBED IN A DOCUMENT RECORDED IN THE OFFICE OF THE EL PASO COUNTY CLERK AND RECORDER IN A DOCUMENT BOOK 1288 PAGE 136;

THENCE SOUTH 89°59'57" EAST, ALONG THE SOUTH LINE OF SAID PARCEL OF LAND DESCRIBED IN BOOK 1288 PAGE 136, A DISTANCE OF 461.95 FEET TO A NO. 5 REBAR WITH A PLASTIC CAP STAMPED "PLS 13830" MARKING THE EAST LINE OF THE NORTHWEST ONE-QUARTER OF THE NORTHWEST ONE-QUARTER OF SECTION 18;

THENCE SOUTH 00°04'36" EAST, ALONG SAID EAST LINE, A DISTANCE OF 309.89 FEET TO A NO. 5 REBAR WITH A PLASTIC CAP STAMPED "PLS 13830" MARKING THE SOUTHEAST CORNER OF THE NORTHWEST ONE-QUARTER OF THE NORTHWEST ONE-QUARTER OF SAID SECTION 18;

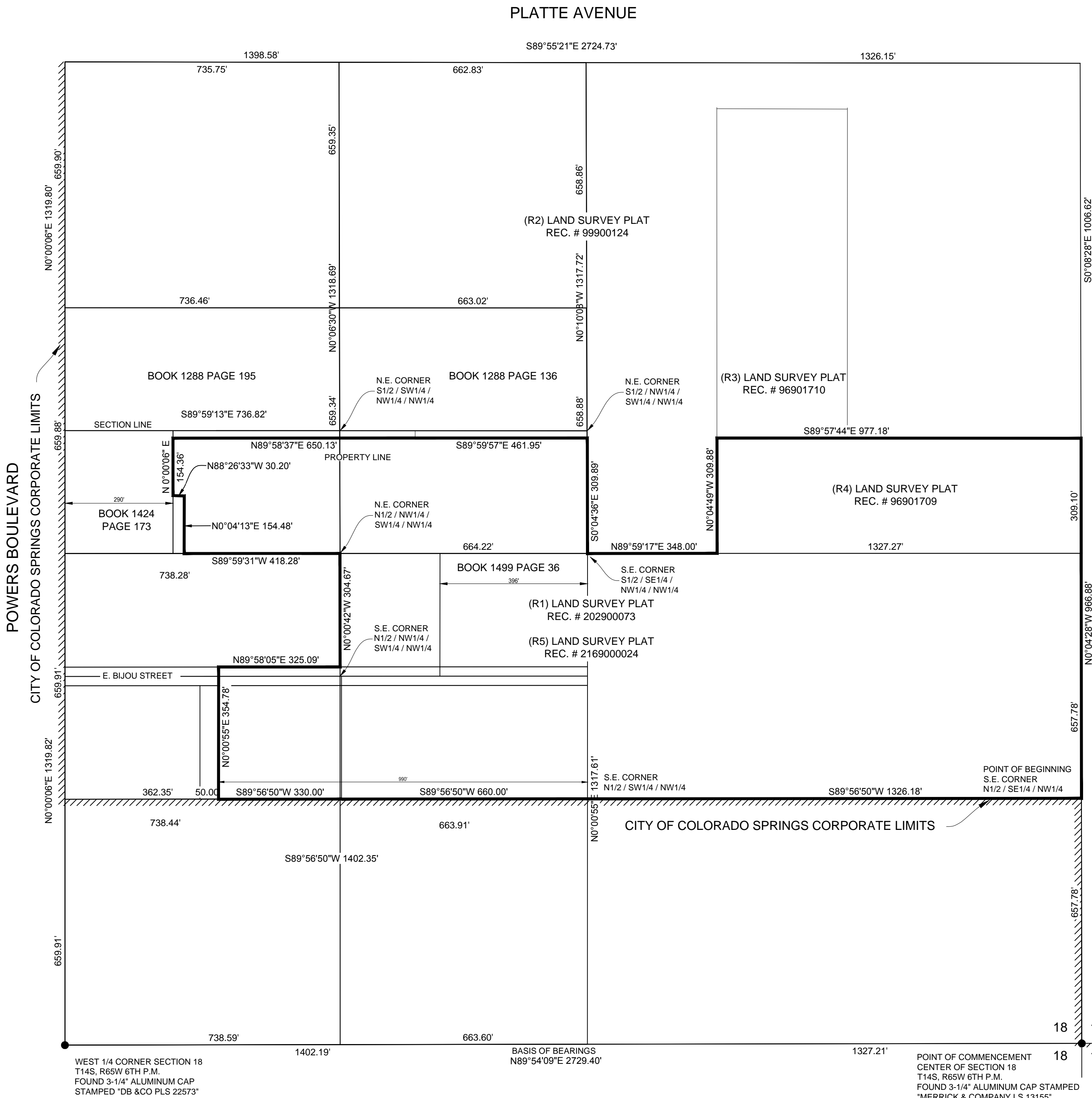
THENCE NORTH 89°59'17" EAST, ALONG THE SOUTH LINE OF THE NORTHEAST ONE-QUARTER OF THE NORTHWEST ONE-QUARTER OF SAID SECTION 18, A DISTANCE OF 348.00 FEET TO A NO. 5 REBAR WITH AN ALUMINUM CAP STAMPED "PLS 27605";

THENCE NORTH 00°04'49" WEST, A DISTANCE OF 309.88 FEET TO A NO. 5 REBAR WITH AN ALUMINUM CAP STAMPED "PLS 27605";

THENCE SOUTH 89°57'44" EAST, A DISTANCE OF 977.18 FEET TO A NO. 5 REBAR WITH AN ALUMINUM CAP STAMPED "PLS 27605" MARKING THE EAST LINE OF THE SAID NORTHWEST ONE-QUARTER OF SECTION 18;

THENCE SOUTH 00°04'28" EAST, ALONG SAID EAST LINE, A DISTANCE OF 966.88 FEET TO THE **POINT OF BEGINNING**;

THE ABOVE DESCRIBED PROPERTY CONTAINS AN AREA OF 2,068,416 SQUARE FEET OR 47.48431 ACRES OF LAND, MORE OR LESS.



POWERS BOULEVARD

CITY OF COLORADO SPRINGS CORPORATE LIMITS

659.91'

N0°00'06"E 1319.82'

659.91'

659.88'

N0°00'06"E 1319.80'

659.90'

659.91'

659.91'

659.88'

659.88'

659.88'

659.88'

659.88'

659.91'

659.91'

659.88'

659.88'

659.88'

659.88'

659.88'

659.91'

659.91'

659.88'

659.88'

659.88'

659.88'

659.88'

659.91'

659.91'

659.88'

659.88'

659.88'

659.88'

659.88'

659.91'

659.91'

659.88'

659.88'

659.88'

659.88'

659.88'

659.91'

659.91'

659.88'

659.88'

659.88'

659.88'

659.88'

659.91'

659.91'

659.88'

659.88'

659.88'

659.88'

659.88'

659.91'

659.91'

659.88'

659.88'

659.88'

659.88'

659.88'

659.91'

659.91'

659.88'

659.88'

659.88'

659.88'

659.88'

659.91'

659.91'

659.88'

659.88'

659.88'

659.88'

659.88'

659.91'

659.91'

659.88'

659.88'

659.88'

659.88'

659.88'

659.91'

659.91'

659.88'

659.88'

659.88'

659.88'

659.88'

659.91'

659.91'

659.88'

659.88'

659.88'

659.88'

659.88'

659.91'

659.91'

659.88'

659.88'

659.88'

659.88'

659.88'

659.91'

659.91'

659.88'

659.88'

659.88'

659.88'

659.88'

659.91'

659.91'

659.88'

659.88'

659.88'

659.88'

659.88'

659.91'

659.91'

659.88'

659.88'

659.88'

659.88'

659.88'

659.91'

659.91'

659.88'

659.88'

659.88'

659.88'

659.88'

659.91'

659.91'

659.88'

659.88'

659.88'

659.88'

659.88'

659.91'

659.91'

659.88'

659.88'

659.88'

659.88'

659.88'

659.91'

659.91'

659.88'

659.88'

659.88'

659.88'

659.88'

659.91'

659.91'

659.88'

659.88'

659.88'

659.88'

659.88'

659.91'

659.91'

659.88'

659.88'

659.88'

659.88'

659.88'

659.91'

659.91'

659.88'

659.88'

659.88'

659.88'

659.88'

659.91'

659.91'

659.88'

659.88'

659.88'

659.88'

659.88'

659.91'

659.91'

659.88'

659.88'

659.88'

659.88'

659.88'

659.91'

659.91'

659.88'

659.88'

659.88'

659.88'

659.88'

659.91'

659.91'

659.88'

659.88'

659.88'

659.88'

659.88'

659.91'

659.91'

659.88'

659.88'

659.88'

659.88'

659.88'

659.91'

659.91'

659.88'

659.88'

659.88'

659.88'

659.88'

659.91'

659.91'

659.88'

659.88'

659.88'

659.88'

659.88'

659.91'

659.91'

659.88'

659.88'

659.88'

659.88'

659.88'

659.91'

659.91'

659.88'

659.88'

659.88'

659.88'

659.88'

659.91'

659.91'