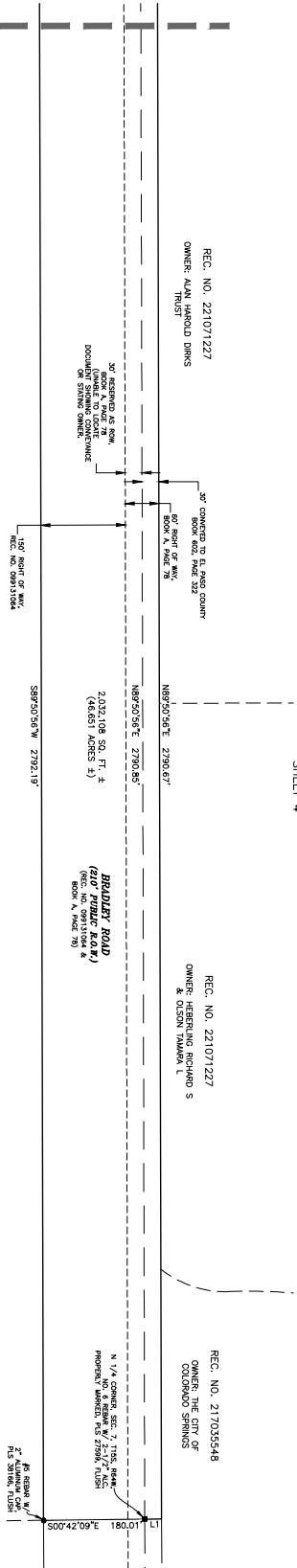


ANNEXATION PLAT NORRIS RANCH NO. 3

A PORTION OF THE SE1/4 OF SEC. 1, THE NE1/4 OF SEC. 11, AND THE N1/2 OF SEC. 12, T15S, R65W AND THE SW1/4 OF SEC. 6 AND THE NW1/4 OF SEC. 7, T15S, R64W, OF THE SIXTH P.M., TO THE CITY OF COLORADO SPRINGS, COUNTY OF EL PASO, STATE OF COLORADO

MATCHLINE SHEET 3-2

NO RECORDING INFO PER
COUNTY ASSESSOR
OWNER: SA RANCHES LLC

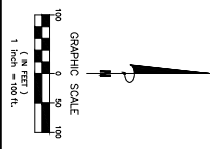


SHEET 4

LEGEND

- FOUND MONUMENT
- 1/4 CORNER SEC. 7, T15S, R64W
- 1/4 CORNER SEC. 7, T15S, R65W
- 1/4 CORNER SEC. 7, T15S, R66W
- 1/4 CORNER SEC. 7, T15S, R67W
- 1/4 CORNER SEC. 7, T15S, R68W
- 1/4 CORNER SEC. 7, T15S, R69W
- 1/4 CORNER SEC. 7, T15S, R70W
- 1/4 CORNER SEC. 7, T15S, R71W
- 1/4 CORNER SEC. 7, T15S, R72W
- 1/4 CORNER SEC. 7, T15S, R73W
- 1/4 CORNER SEC. 7, T15S, R74W
- 1/4 CORNER SEC. 7, T15S, R75W
- 1/4 CORNER SEC. 7, T15S, R76W
- 1/4 CORNER SEC. 7, T15S, R77W
- 1/4 CORNER SEC. 7, T15S, R78W
- 1/4 CORNER SEC. 7, T15S, R79W
- 1/4 CORNER SEC. 7, T15S, R80W
- 1/4 CORNER SEC. 7, T15S, R81W
- 1/4 CORNER SEC. 7, T15S, R82W
- 1/4 CORNER SEC. 7, T15S, R83W
- 1/4 CORNER SEC. 7, T15S, R84W
- 1/4 CORNER SEC. 7, T15S, R85W
- 1/4 CORNER SEC. 7, T15S, R86W
- 1/4 CORNER SEC. 7, T15S, R87W
- 1/4 CORNER SEC. 7, T15S, R88W
- 1/4 CORNER SEC. 7, T15S, R89W
- 1/4 CORNER SEC. 7, T15S, R90W
- 1/4 CORNER SEC. 7, T15S, R91W
- 1/4 CORNER SEC. 7, T15S, R92W
- 1/4 CORNER SEC. 7, T15S, R93W
- 1/4 CORNER SEC. 7, T15S, R94W
- 1/4 CORNER SEC. 7, T15S, R95W
- 1/4 CORNER SEC. 7, T15S, R96W
- 1/4 CORNER SEC. 7, T15S, R97W
- 1/4 CORNER SEC. 7, T15S, R98W
- 1/4 CORNER SEC. 7, T15S, R99W
- 1/4 CORNER SEC. 7, T15S, R100W

LINE	BEARING	DISTANCE
1-1	S00°00'00"E	30.00'
1-2	S00°00'00"E	30.00'
1-3	S00°00'00"E	30.00'
1-4	S00°00'00"E	30.00'
1-5	S00°00'00"E	30.00'
1-6	S00°00'00"E	30.00'
1-7	S00°00'00"E	30.00'
1-8	S00°00'00"E	30.00'
1-9	S00°00'00"E	30.00'
1-10	S00°00'00"E	30.00'
1-11	S00°00'00"E	30.00'
1-12	S00°00'00"E	30.00'
1-13	S00°00'00"E	30.00'
1-14	S00°00'00"E	30.00'
1-15	S00°00'00"E	30.00'
1-16	S00°00'00"E	30.00'
1-17	S00°00'00"E	30.00'
1-18	S00°00'00"E	30.00'
1-19	S00°00'00"E	30.00'
1-20	S00°00'00"E	30.00'
1-21	S00°00'00"E	30.00'
1-22	S00°00'00"E	30.00'
1-23	S00°00'00"E	30.00'
1-24	S00°00'00"E	30.00'
1-25	S00°00'00"E	30.00'
1-26	S00°00'00"E	30.00'
1-27	S00°00'00"E	30.00'
1-28	S00°00'00"E	30.00'
1-29	S00°00'00"E	30.00'
1-30	S00°00'00"E	30.00'
1-31	S00°00'00"E	30.00'
1-32	S00°00'00"E	30.00'
1-33	S00°00'00"E	30.00'
1-34	S00°00'00"E	30.00'
1-35	S00°00'00"E	30.00'
1-36	S00°00'00"E	30.00'
1-37	S00°00'00"E	30.00'
1-38	S00°00'00"E	30.00'
1-39	S00°00'00"E	30.00'
1-40	S00°00'00"E	30.00'
1-41	S00°00'00"E	30.00'
1-42	S00°00'00"E	30.00'
1-43	S00°00'00"E	30.00'
1-44	S00°00'00"E	30.00'
1-45	S00°00'00"E	30.00'
1-46	S00°00'00"E	30.00'
1-47	S00°00'00"E	30.00'
1-48	S00°00'00"E	30.00'
1-49	S00°00'00"E	30.00'
1-50	S00°00'00"E	30.00'
1-51	S00°00'00"E	30.00'
1-52	S00°00'00"E	30.00'
1-53	S00°00'00"E	30.00'
1-54	S00°00'00"E	30.00'
1-55	S00°00'00"E	30.00'
1-56	S00°00'00"E	30.00'
1-57	S00°00'00"E	30.00'
1-58	S00°00'00"E	30.00'
1-59	S00°00'00"E	30.00'
1-60	S00°00'00"E	30.00'
1-61	S00°00'00"E	30.00'
1-62	S00°00'00"E	30.00'
1-63	S00°00'00"E	30.00'
1-64	S00°00'00"E	30.00'
1-65	S00°00'00"E	30.00'
1-66	S00°00'00"E	30.00'
1-67	S00°00'00"E	30.00'
1-68	S00°00'00"E	30.00'
1-69	S00°00'00"E	30.00'
1-70	S00°00'00"E	30.00'
1-71	S00°00'00"E	30.00'
1-72	S00°00'00"E	30.00'
1-73	S00°00'00"E	30.00'
1-74	S00°00'00"E	30.00'
1-75	S00°00'00"E	30.00'
1-76	S00°00'00"E	30.00'
1-77	S00°00'00"E	30.00'
1-78	S00°00'00"E	30.00'
1-79	S00°00'00"E	30.00'
1-80	S00°00'00"E	30.00'
1-81	S00°00'00"E	30.00'
1-82	S00°00'00"E	30.00'
1-83	S00°00'00"E	30.00'
1-84	S00°00'00"E	30.00'
1-85	S00°00'00"E	30.00'
1-86	S00°00'00"E	30.00'
1-87	S00°00'00"E	30.00'
1-88	S00°00'00"E	30.00'
1-89	S00°00'00"E	30.00'
1-90	S00°00'00"E	30.00'
1-91	S00°00'00"E	30.00'
1-92	S00°00'00"E	30.00'
1-93	S00°00'00"E	30.00'
1-94	S00°00'00"E	30.00'
1-95	S00°00'00"E	30.00'
1-96	S00°00'00"E	30.00'
1-97	S00°00'00"E	30.00'
1-98	S00°00'00"E	30.00'
1-99	S00°00'00"E	30.00'
1-100	S00°00'00"E	30.00'



CPC X XX-XXXX

ANNEXATION PLAT, NORRIS RANGE NO. 3		Notice: According to Colorado law you must commence any legal action based upon any defect in this survey within three years after you first discover such defect. In no event may any action based upon any defect in this survey be commenced more than ten years from the date of the certification shown hereon.																																													
SE1/4, SEC. 1, NE1/4, SEC. 11, N1/2, SEC. 12, T15S, R65W SW1/4, SEC. 6, NW1/4, SEC. 7, T15S, R64W OF THE 6TH P.M., COUNTY OF EL PASO, COLORADO		Revisions <table border="1" style="width: 100%; border-collapse: collapse;"> <thead> <tr> <th>No.</th> <th>Description</th> <th>By</th> <th>Date</th> </tr> </thead> <tbody> <tr><td> </td><td> </td><td> </td><td> </td></tr> <tr><td> </td><td> </td><td> </td><td> </td></tr> <tr><td> </td><td> </td><td> </td><td> </td></tr> <tr><td> </td><td> </td><td> </td><td> </td></tr> <tr><td> </td><td> </td><td> </td><td> </td></tr> <tr><td> </td><td> </td><td> </td><td> </td></tr> <tr><td> </td><td> </td><td> </td><td> </td></tr> <tr><td> </td><td> </td><td> </td><td> </td></tr> <tr><td> </td><td> </td><td> </td><td> </td></tr> <tr><td> </td><td> </td><td> </td><td> </td></tr> </tbody> </table>		No.	Description	By	Date																																								
No.	Description	By	Date																																												
Project No. 220058	Drawn By: EJC Checked By: SLM	Date: 7/6/2022 Sheet 4 of 4	<p style="font-size: small;">177 S. Tiffany Dr. • Pueblo West, Co. 81007 • 719.633.8553 www.clark4s.com</p>																																												