

**Woodmen Rd: Land Use-5 miles from I-25 to Powers Blvd
October 24, 2019**

	Residential- LF of Frontage	Commercial- LF of Frontage	Office- LF of Frontage	Total
TOTAL	23,806	23,944	5,962	53,712
Percentage of Total	44.3%	44.6%	11.1%	100%

Combined the North and South sides of Woodmen Rd

FIGURE 16

Exhibit G

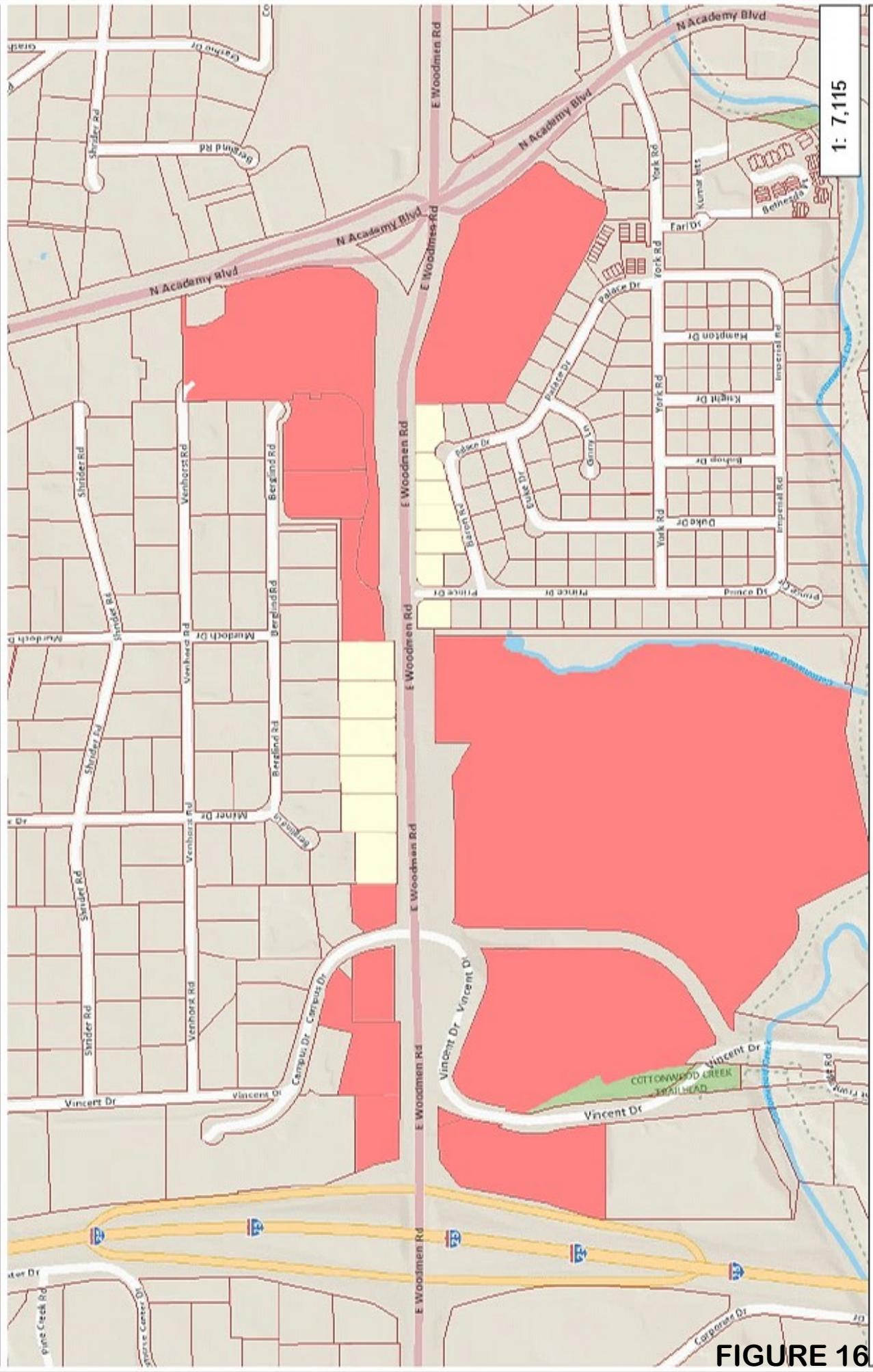
Woodmen Rd: Land Use-5 miles from I-25 to Powers Blvd
October 24, 2019

Section	Residential- LF of Frontage	% of LF	Commercial- LF of Frontage	% of LF	Office- LF of Frontage	% of LF	Total
I-25 to Academy Blvd	2,224	25%	6,744	75%	0	0%	8,968
Academy Blvd to Union Blvd	10,128	84%	1,932	16%	0	0%	12,060
Union Blvd to Rangwood Dr	6,587	58%	2,904	25%	1,927	17%	11,418
Rangewood Dr to Austin Bluffs Pkwy	3,147	31%	4,062	40%	2,834	28%	10,044
Austin Bluffs Pkwy to Powers Blvd	1,720	15%	8,302	74%	1,201	11%	11,224
TOTALS	23,806		23,944		5,962		53,712
Percentage of Totals	44.3%		44.6%		11.1%		100%

Proposed change of 1535 LF	25,341		23,049		5,322		53,712
Percentage of Totals	47.2%		42.9%		9.9%		100.0%

FIGURE 16

I-25 to Academy Blvd



1: 7,115

Copyright © 2019 City of Colorado Springs on behalf of the Colorado Springs Utilities. All rights reserved. This work, and/or the data contained herein, may not be modified, republished, used to prepare derivative works or commercially exploited in any manner without the prior express written consent of the City of Colorado Springs. This work was prepared utilizing the best data available at the time of creation. Neither the City of Colorado Springs, the Colorado Springs Utilities, nor any of their employees makes any warranty, express or implied, or assumes any legal liability or responsibility for accuracy, completeness, or usefulness of any data contained herein. The City of Colorado Springs, Colorado Springs Utilities, and their employees warrant that the data contained herein was obtained from sources that are reliable and accurate.



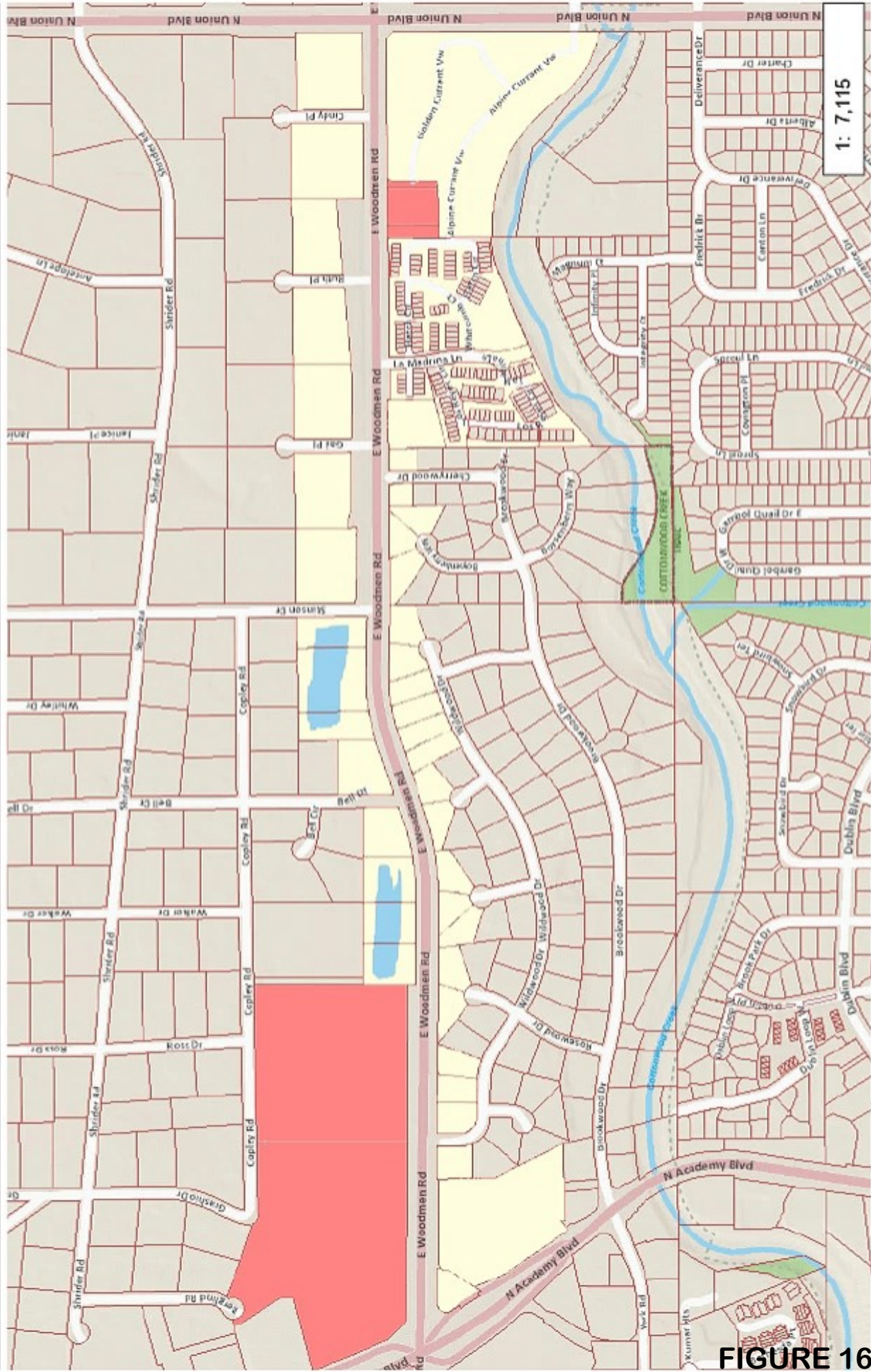
0.2 Miles

0.11

0

FIGURE 16

Academy Blvd to Union Blvd



1: 7,115

Copyright © 2019 City of Colorado Springs on behalf of the Colorado Springs Utilities. All rights reserved. This work, and/or the data contained herein, may not be modified, republished, used to prepare derivative works or commercially exploited in any manner without the prior express written consent of the City of Colorado Springs. This work was prepared utilizing the best data available at the time of creation. Neither the City of Colorado Springs, the Colorado Springs Utilities, nor any of their employees makes any warranty, express or implied, or assumes any legal liability or responsibility for accuracy, completeness, or usefulness of any data contained herein. The City of Colorado Springs, Colorado Springs Utilities, and their employees neither warrant nor accept responsibility for the data contained herein.

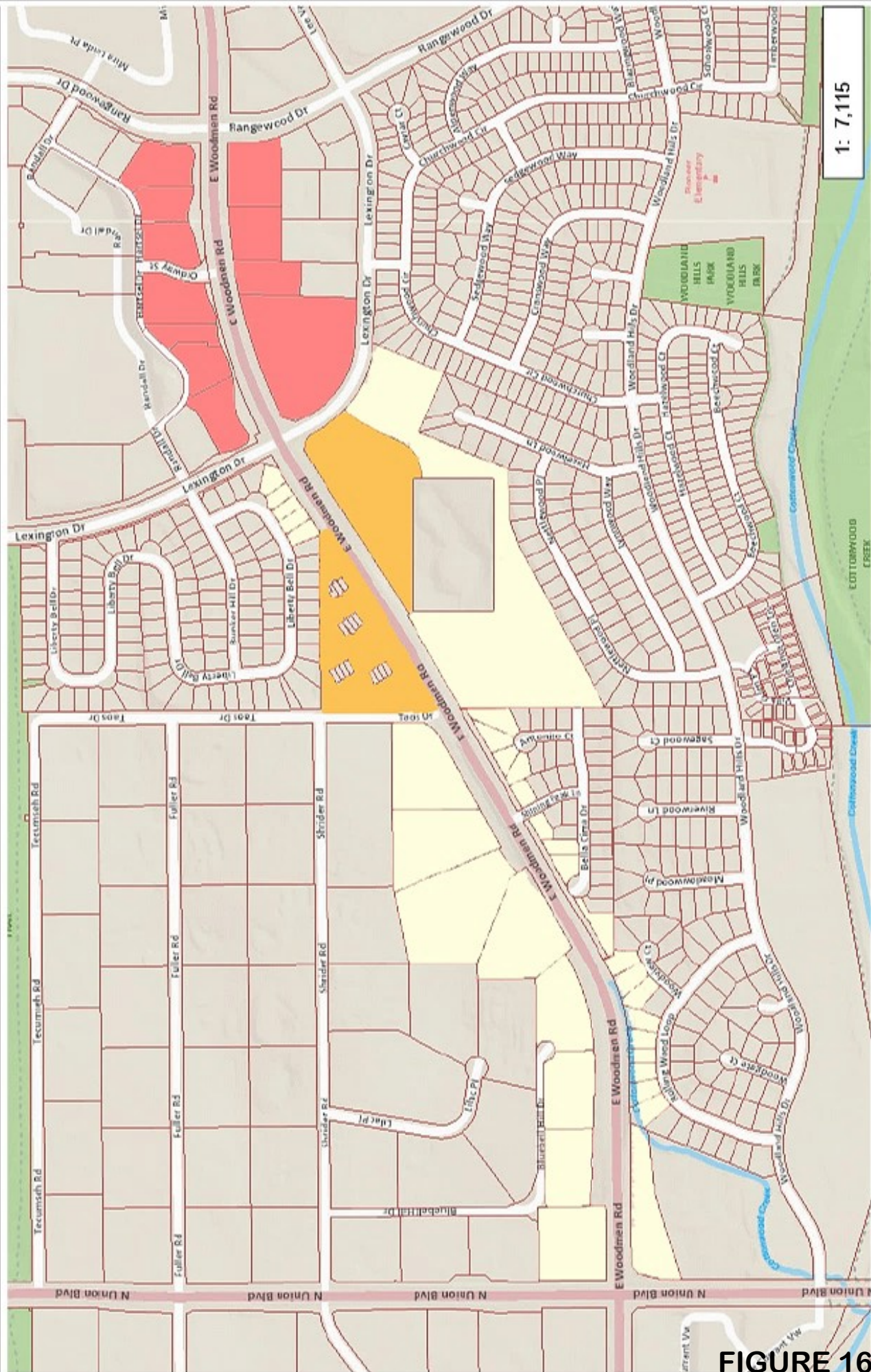


0.2 0 0.11 0.2 Miles

FIGURE 16



Union Blvd to Rangewood Dr



1: 7,115

0.2 0 0.11 0.2 Miles



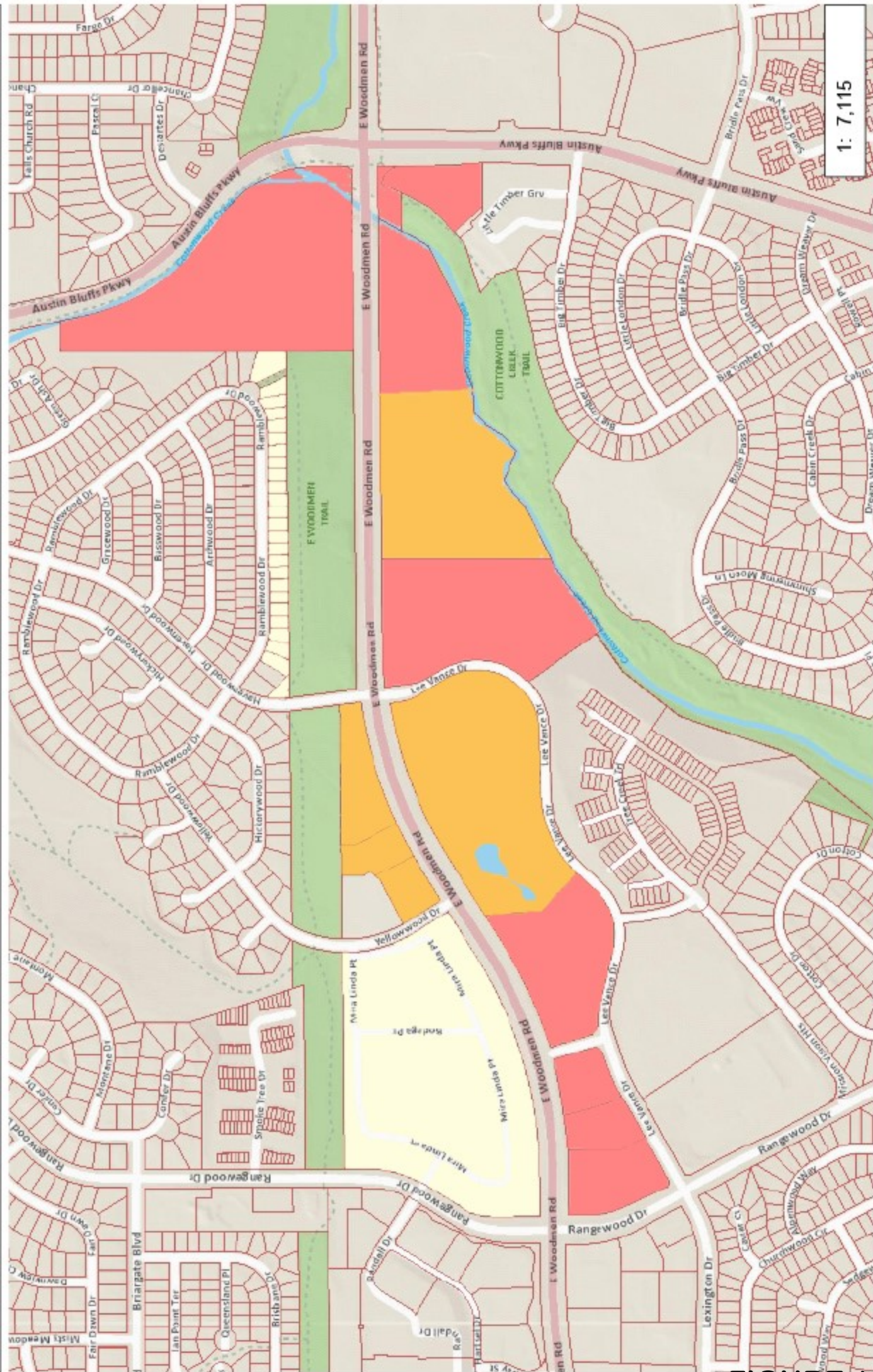
Copyright © 2019 City of Colorado Springs on behalf of the Colorado Springs Utilities. All rights reserved. This work, and/or the data contained herein, may not be modified, republished, used to prepare derivative works or commercially exploited in any manner without the prior express written consent of the City of Colorado Springs. This work was prepared utilizing the best data available at the time of creation. Neither the City of Colorado Springs, the Colorado Springs Utilities, nor any of their employees makes any warranty, express or implied, or assumes any legal liability or responsibility for accuracy, completeness, or usefulness of any data contained herein. The City of Colorado Springs, Colorado Springs Utilities, and their employees explicitly disclaim any responsibility for the data contained herein.

NAD_1983_StatePlane_Colorado_Central_FIPS_0502_Feet
© Latitude Geographics Group Ltd.

FIGURE 16



Rangewood Dr to Austin Bluffs Pkwy



1: 7,115

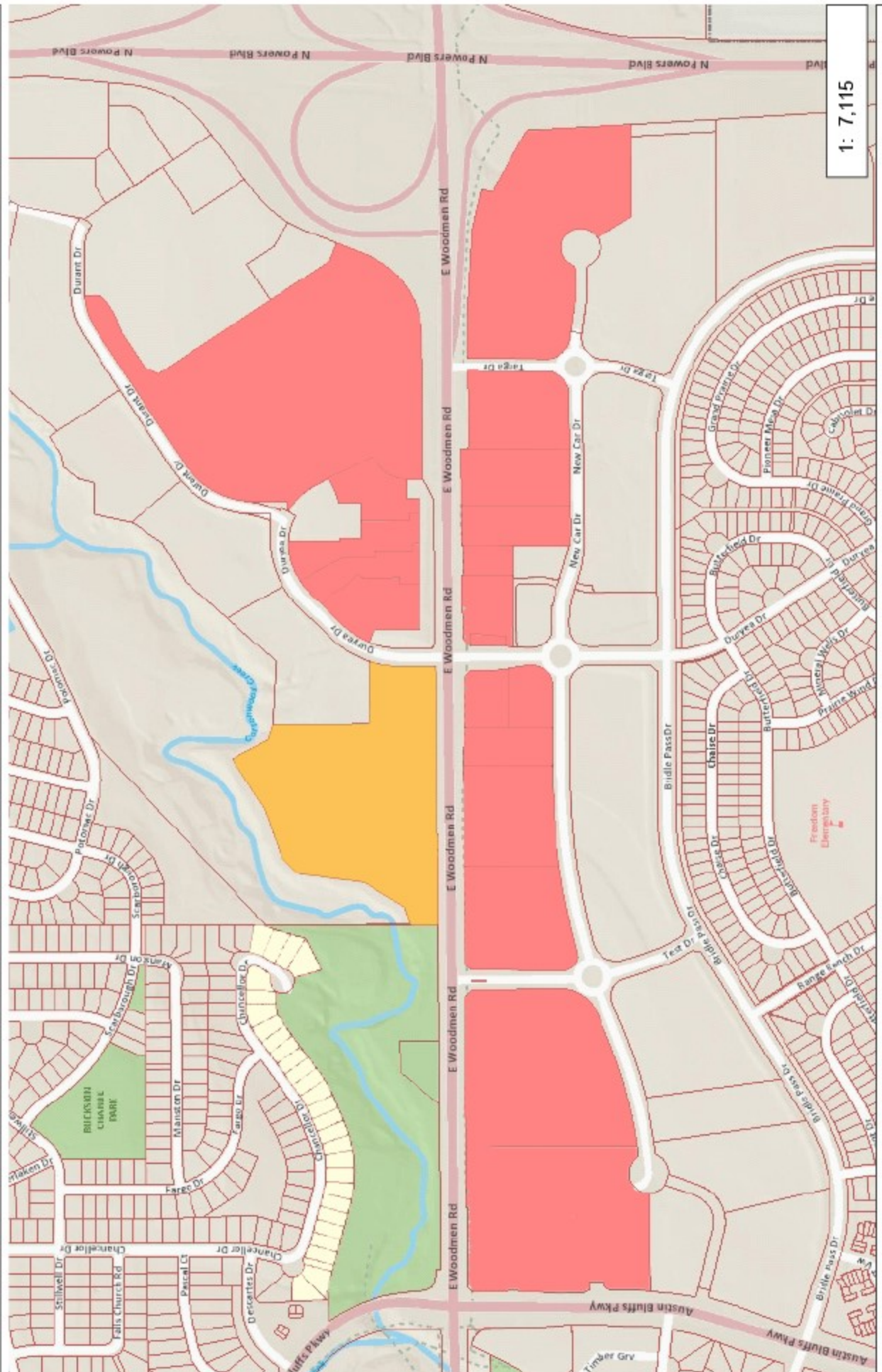


Copyright © 2019 City of Colorado Springs on behalf of the Colorado Springs Utilities. All rights reserved. This work, and/or the data contained herein, may not be reprinted, reproduced, republished, prepared for other purposes, or transmitted in any form without the written consent of the City of Colorado Springs. This work and/or the data contained herein is provided for informational purposes only and is not intended to be used for any other purpose. The City of Colorado Springs, Colorado Springs Utilities, nor any of their employees makes any warranty, express or implied, or assumes any legal liability or responsibility for accuracy, completeness, or usefulness of any data contained herein. The City of Colorado Springs, Colorado Springs Utilities, and their employees explicitly disclaim any responsibility for the data contained herein.

NAD_1983_StatePlane_Colorado_Central_FIPS_0502_Feet
 © Latitude Geographics Group Ltd.

FIGURE 16

Austin Bluffs Pkwy to Powers Blvd



1: 7,115

Copyright © 2019 City of Colorado Springs on behalf of the Colorado Springs Utilities. All rights reserved. This work, and/or the data contained herein, may not be copied, reproduced, republished, or otherwise disseminated without the prior written consent of the City of Colorado Springs. This work and/or the data contained herein are provided for informational purposes only and are not intended to constitute any warranty, express or implied, or assume any legal liability or responsibility for accuracy, completeness, or usefulness of any data contained herein. The City of Colorado Springs, Colorado Springs Utilities, and their employees expressly disclaim any responsibility for the data contained herein.



0.2 Miles

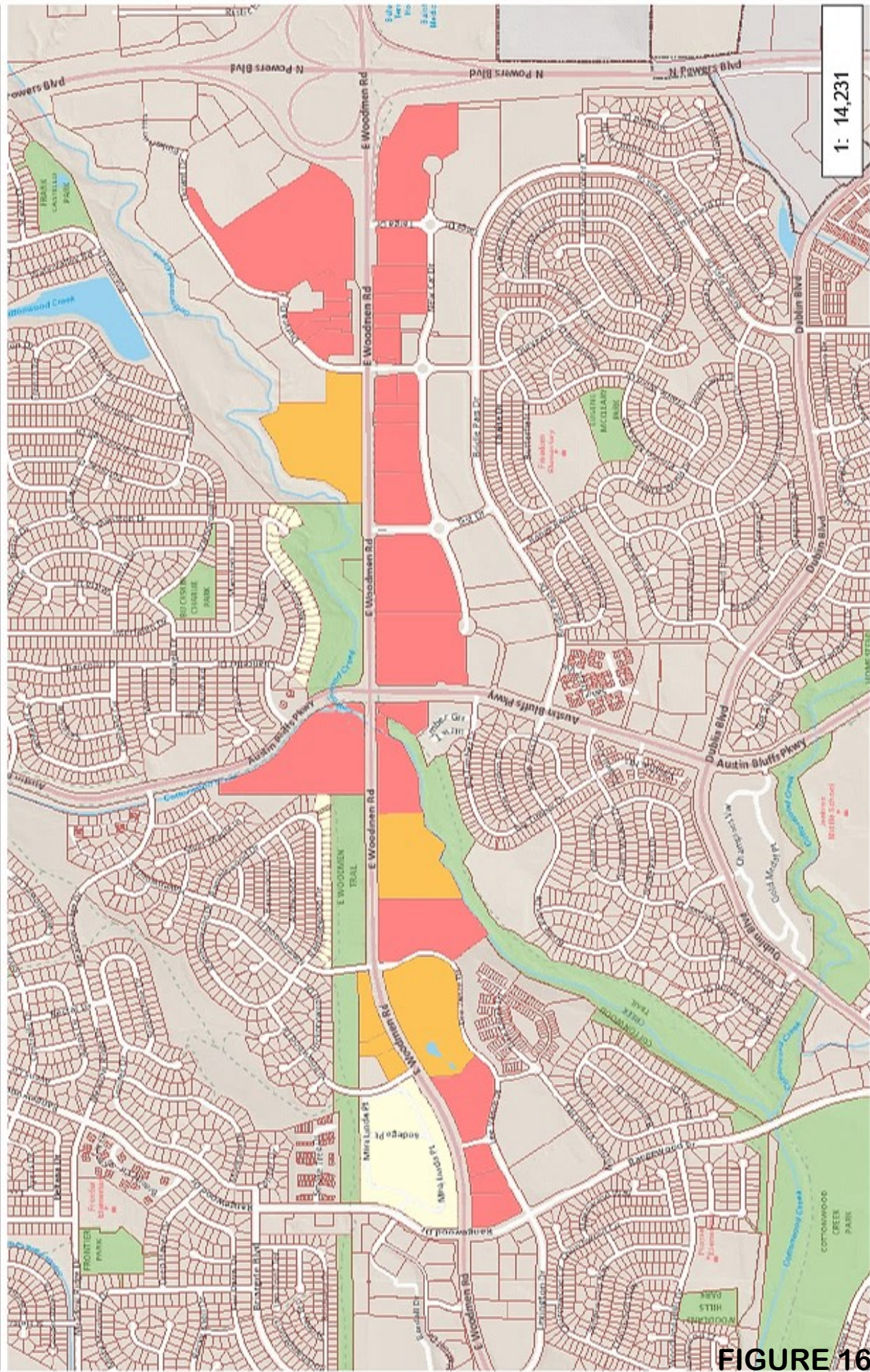
0 0.11

0.2

NAD_1983_StatePlane_Colorado_Central_FIPS_0502_Feet
© Latitude Geographics Group Ltd.

FIGURE 16

Rangewood Dr to Powers Blvd



1: 14,231



Copyright © 2019 City of Colorado Springs on behalf of the Colorado Springs Utilities. All rights reserved. This work, and/or the data contained herein, may not be modified, republished, used to prepare derivative works or commercially exploited in any manner without the prior express written consent of the City of Colorado Springs. This work was prepared utilizing the best data available at the time of creation. Neither the City of Colorado Springs, the Colorado Springs Utilities, nor any of their employees makes any warranty, express or implied, or assumes any legal liability or responsibility for accuracy, completeness, or usefulness of any data contained herein. The City of Colorado Springs, Colorado Springs Utilities, Colorado Springs Utilities, and their employees warrant the accuracy and completeness of the data contained herein.

FIGURE 16