



N.E.S. Inc.
619 N. Cascade Avenue, Suite 200
Colorado Springs, CO 80903
Tel: 719.471.0073
Fax: 719.471.0267
www.nescolorado.com
© 2012. All Rights Reserved.

PLANNER / LANDSCAPE ARCHITECT

UNIVERSITY BLUFFS

FILING NO. 4A

2112 COLLEGIATE DRIVE
COLORADO SPRINGS, CO
80918

DATE: 12-19-2018
PROJECT MGR: A. BARLOW
PREPARED BY: K. MARSHALL

ENTITLEMENT

DATE: 02-28-19
BY: KMM

DESCRIPTION:
PER CITY REVIEW
COMMENTS

ZONE CHANGE EXHIBIT

SHEET NUMBER: 1 OF 1

PLAN FILE # CPC PUZ 19-00004

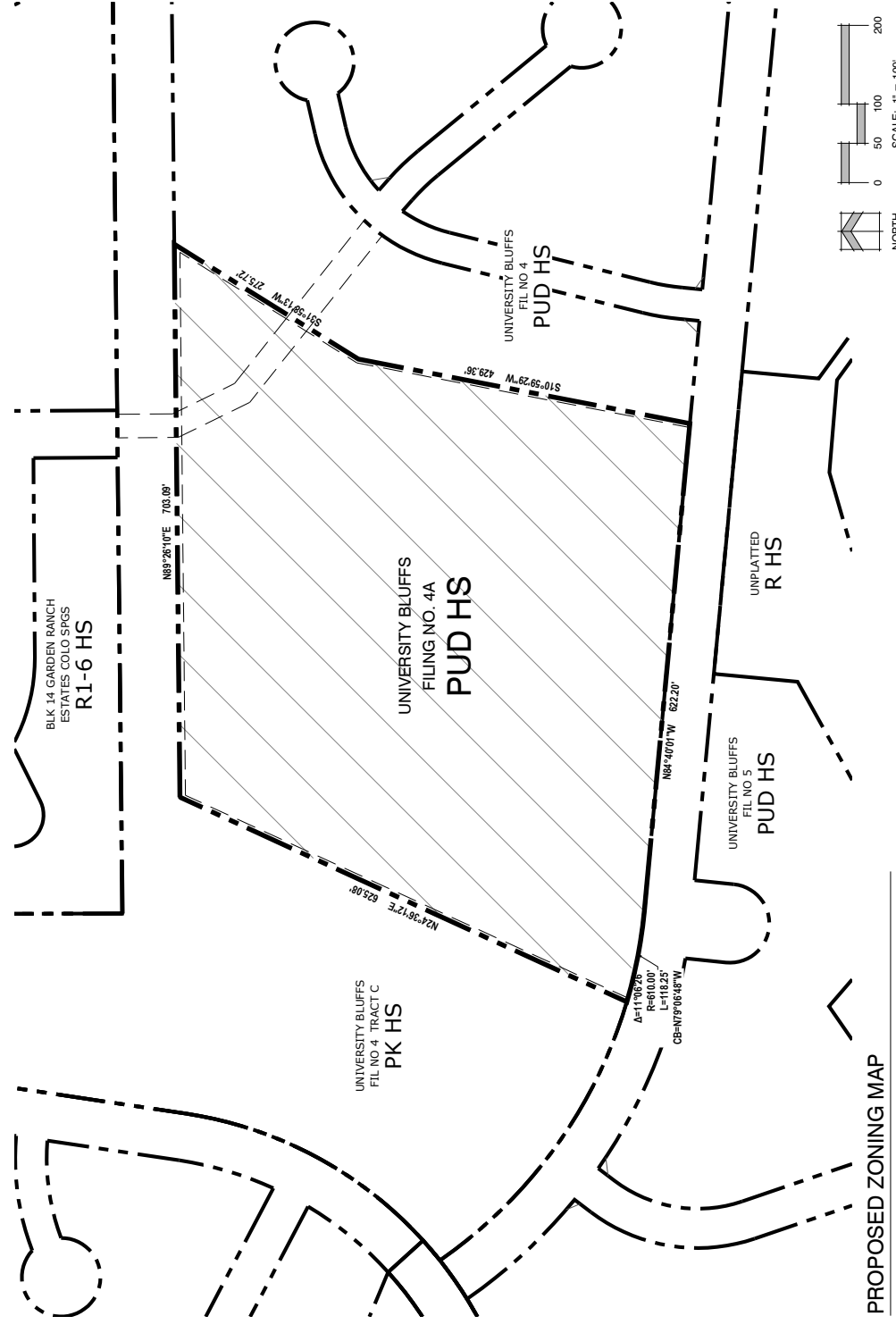
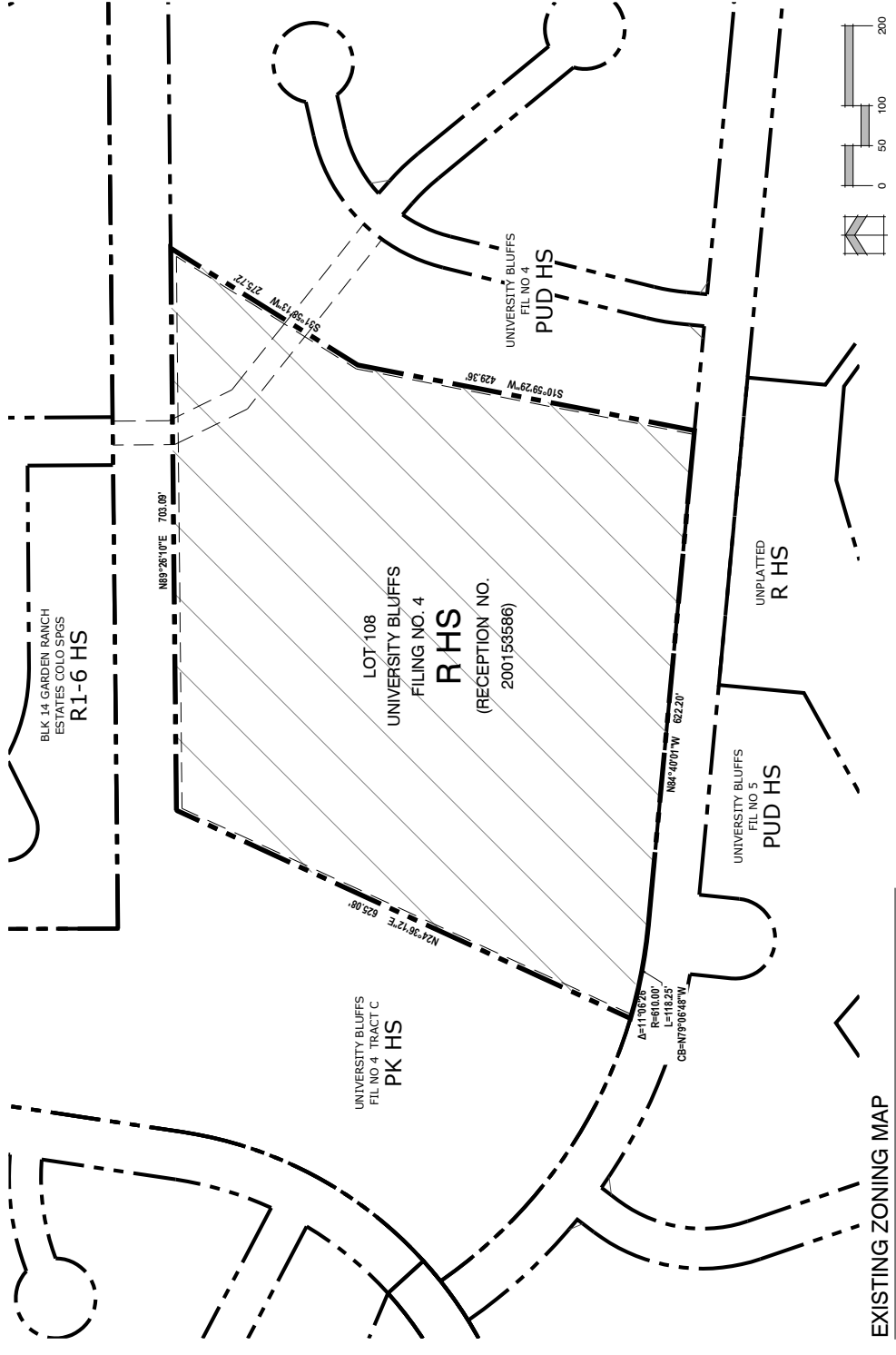


FIGURE 2