

Enclaves at Mountain Vistas

CPC MP 87-00381-A15MJ16 – LEGISLATIVE

CPC PUZ 16-00010 – QUASI-JUDICIAL

CPC PUZ 16-00011 – QUASI-JUDICIAL

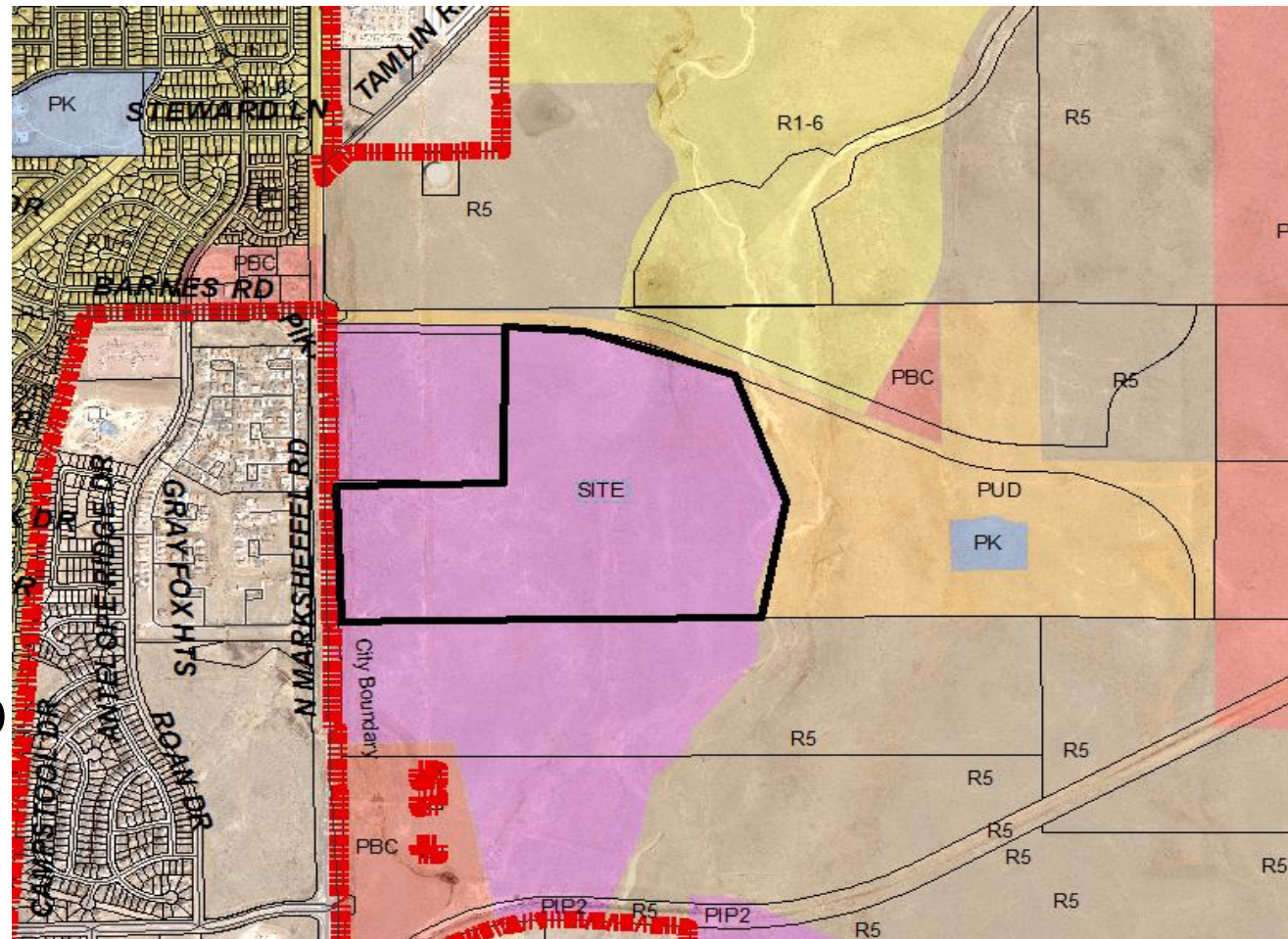
CPC PUP 16-00013 – QUASI-JUDICIAL



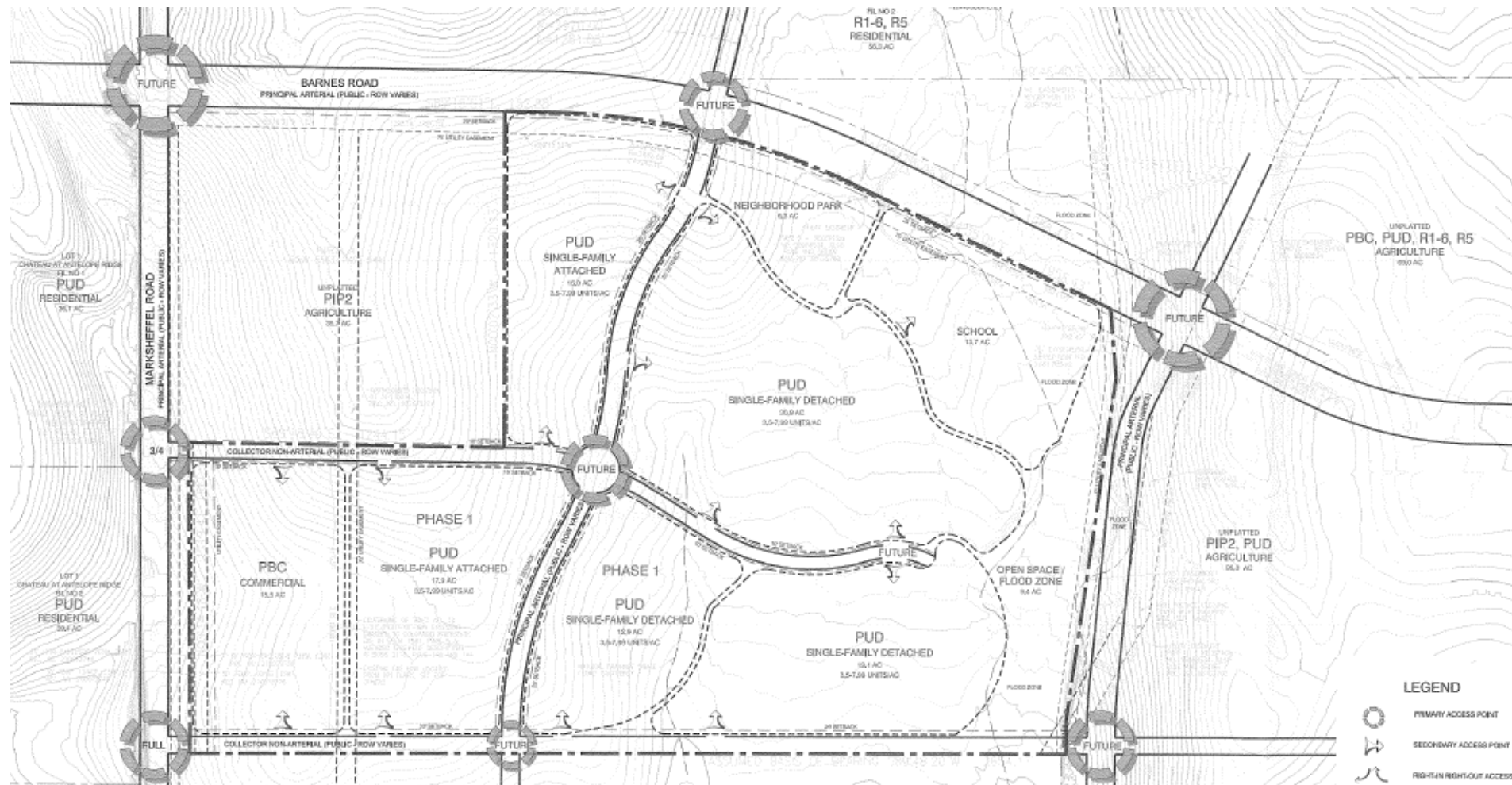
Meggan Herington, AICP
Planning Manager

Vicinity Map

- 153.33 acres
- Industrial to residential
- Rezone 135.63 to PUD
- Rezone 17.7 to PBC



Concept Plan



BLR Master Plan Map

- Development occurring largely north to south
 - Mainly residential development
 - Villages 1 and 2
 - Villages 3 in the planning phases
- There are approximately 600 vacant acres of industrial to the south (PIP-2)
 - Additional PIP-1 acreage in BLR

Recommendation

- Staff recommends approval of the applications finding they are in conformance with the Comprehensive Plan and City Code
 - With the condition that the applicant update the master plan document and associated land use table
- City Planning Commission recommended approval unanimously on the consent calendar at their May meeting

Questions?

