

EXHIBIT "A"

LEGAL DESCRIPTION:

MULTI FAMILY and OPEN SPACE

Being a part of the Government Lots 5 and 6 of Section 6, Township 13 South, Range 65 West of the 6th P.M., City of Colorado Springs, County of El Paso, State of Colorado.

beginning at the Northwest Corner of Tutt Boulevard as shown in Reception No. 206712270; The following 5 courses are along the West line thereof; 1) thence S00°46'20"W, a distance of 57.75 feet to a point of curvature;; 2) thence along said curve to the Right, having a Radius of 658.00 feet through a central angle of 10°30'48" for an arc length of 120.74 feet, who's Long Chord bears S06°01'44"W, a distance of 120.57 feet to a tangent line; 3) thence S11°17'08"W, a distance of 101.38 feet to a point of curvature; 4) thence along said curve to the Left, having a radius of 742.00 feet through a central angle of 10°33'10", for an arc distance of 136.66 feet, who's long Chord bears S06°00'33"W, a distance of 136.47 feet to a tangent line; 5) thence S00°46'20"W, a distance of 240.782 feet; thence departing said West line S87°52'50"W, 588.45 feet; thence S00°18'37"E, a distance of 683.34 feet to a point on the North line of Westview Estates as shown on Reception No. 474595; thence S87°03'58"W along the north line thereof, a distance of 579.63 feet; thence N10°11'15"W, a distance of 727.29 feet; thence N00°20'55"E, a distance of 629.32 feet; thence S89°08'13"W, a distance of 1339.39' to the Point of Beginning, containing 29.607 acres more or less.

See Exhibit "B" attached.

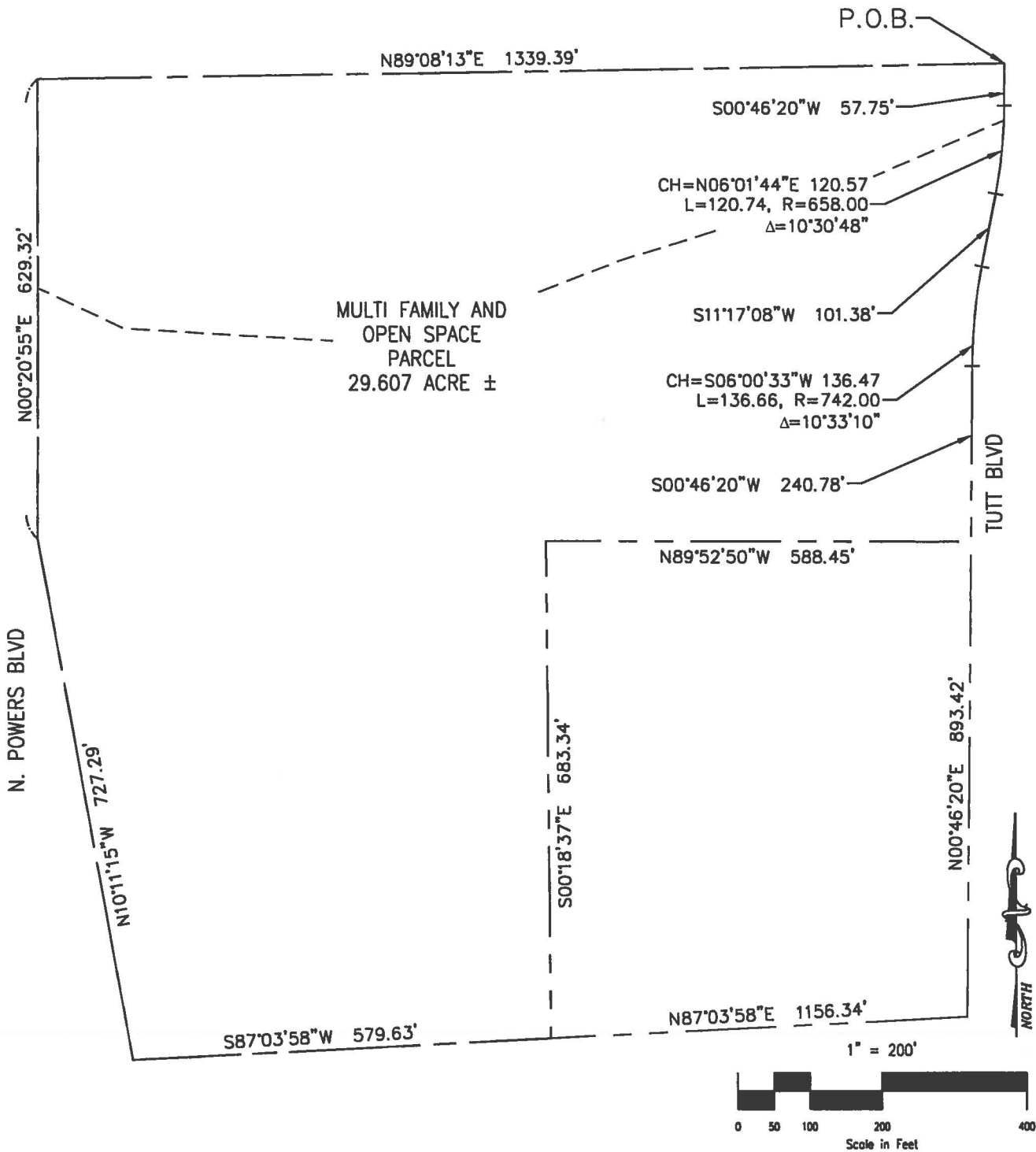
JOB NO. 11-014

FILE: BVS-RG2-RCI-2014_0502_LAYOUT.DWG
DATE: 8/7/14

CPC ZC 14-00080 / LL



EXHIBIT "B"



A PORTION OF THE
GOVERNMENT LOTS
5 and 6
OF SECTION 6,
T-13-S, R-65-W OF THE 6th P.M.,
EL PASO COUNTY, COLORADO

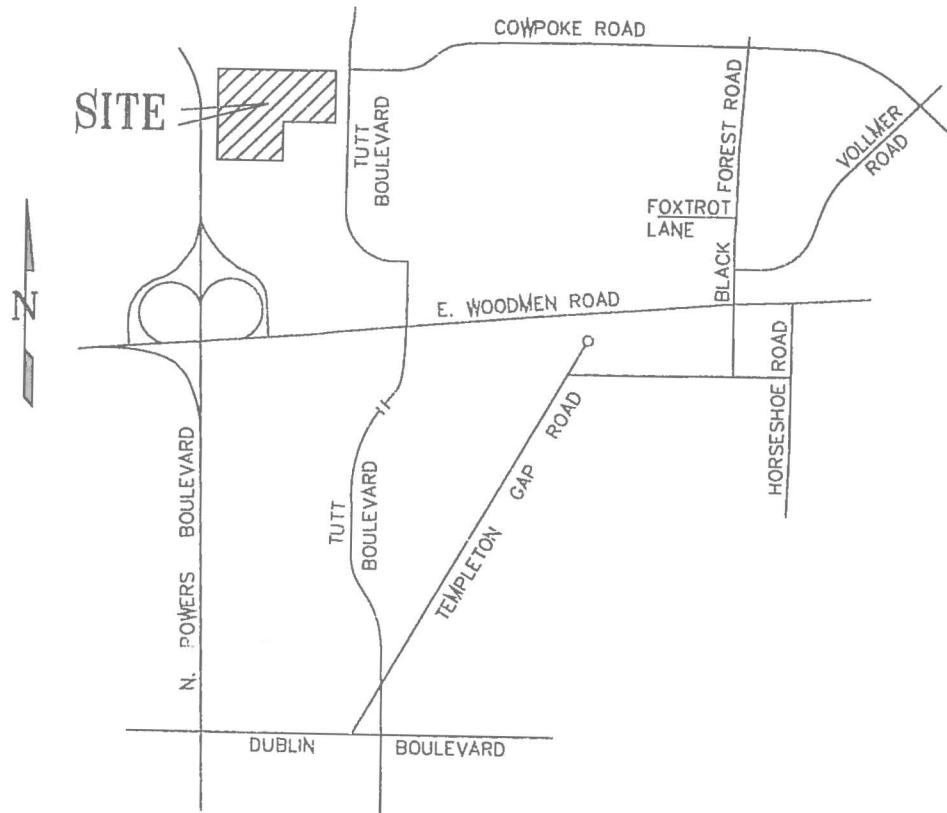
CPC ZC 14-00080 / LL

JOB NO. 11-014

FILE: BVS-RG2-RCI-2014_0502_LAYOUT.DWG
DATE: 8/7/14

ROCKWELL CONSULTING, Inc.

ENGINEERING • SURVEYING
1955 N. UNION BLVD., SUITE 200
COLORADO SPRINGS, CO 80909
(719) 475-2575 • FAX (719) 475-9223



VICINITY MAP