

BANNING LEWIS RANCH NORTH

CITY OF COLORADO SPRINGS, COLORADO

PUD CONCEPT PLAN



N.E.S. Inc.
619 N. Cascade Avenue, Suite 200
Colorado Springs, CO 80903
Tel: 719.411.0073
Fax: 719.411.0267
www.niesinc.com
© 2012. All Rights Reserved.

BANNING LEWIS RANCH NORTH

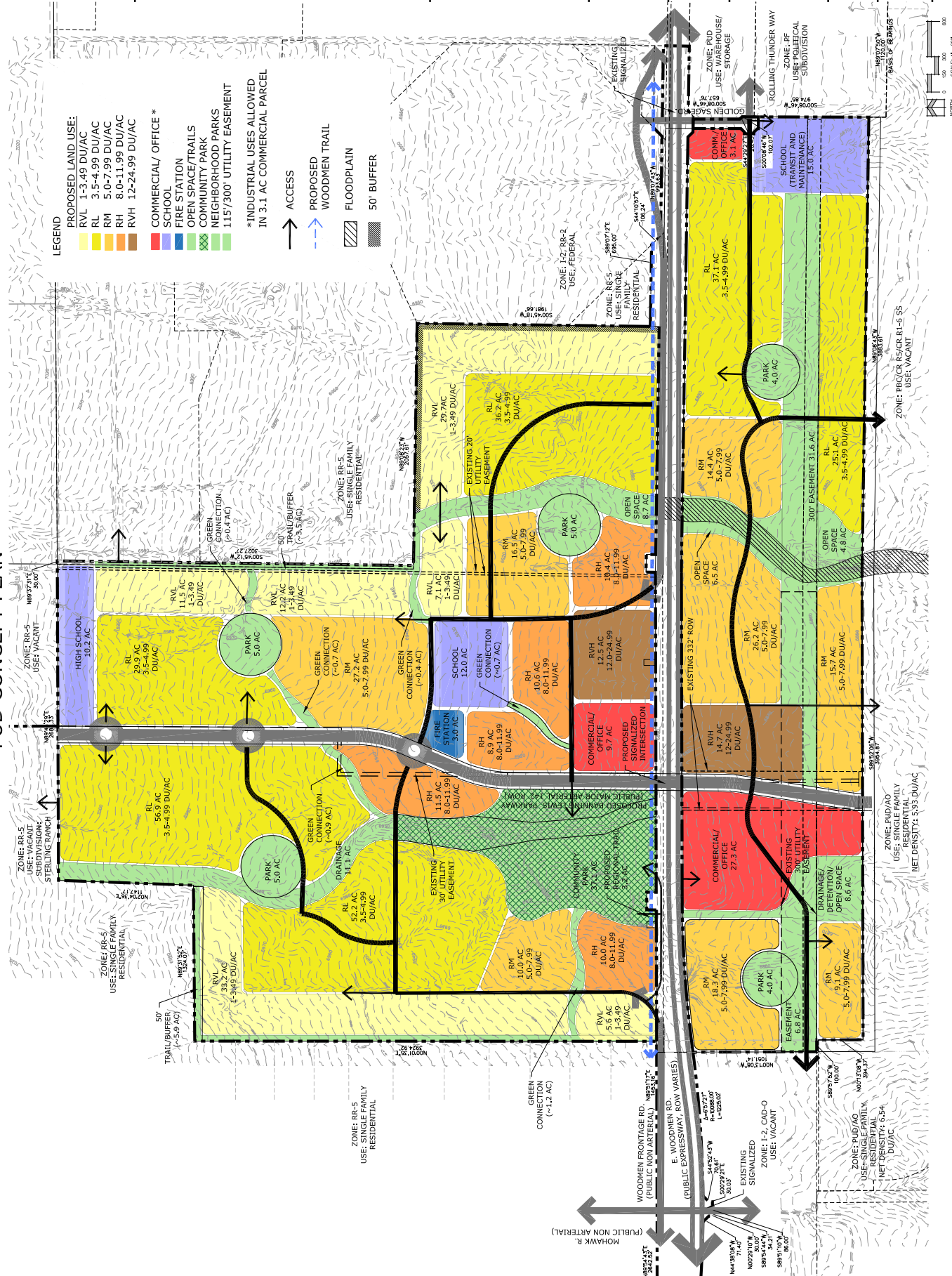
NORWOOD

DATE: 12/20/12
DESIGNED BY: A. GARDNER
CHECKED BY: A. GARDNER

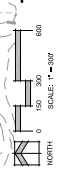
PUD CONCEPT PLAN

2 OF 3

CPC PUP 19-00125



- LEGEND**
- PROPOSED LAND USE:**
- RL 1-3-49 DU/AC
 - RL 3.5-4.99 DU/AC
 - RL 5.0-7.99 DU/AC
 - RM 8.0-11.99 DU/AC
 - RVH 12-24.99 DU/AC
 - COMM./OFFICE
 - SCHOOL
 - OPEN SPACE/TRAILS
 - COMMUNITY PARK
 - NEIGHBORHOOD PARKS
 - 1.15'/300' UTILITY EASEMENT
- *INDUSTRIAL USES ALLOWED IN 3.1 AC COMMERCIAL PARCEL**
- ACCESS
 - PROPOSED WOODMEN TRAIL
 - FLOODPLAIN
 - 50' BUFFER



CONCEPT PLAN

BANNING LEWIS RANCH NORTH

CITY OF COLORADO SPRINGS, COLORADO

PUD CONCEPT PLAN



N.E.S. Inc.
619 N. Cascade Avenue, Suite 200
Colorado Springs, CO 80903
Tel: 719.411.0073
Fax: 719.411.0267
www.niesinc.com
© 2012. All Rights Reserved.

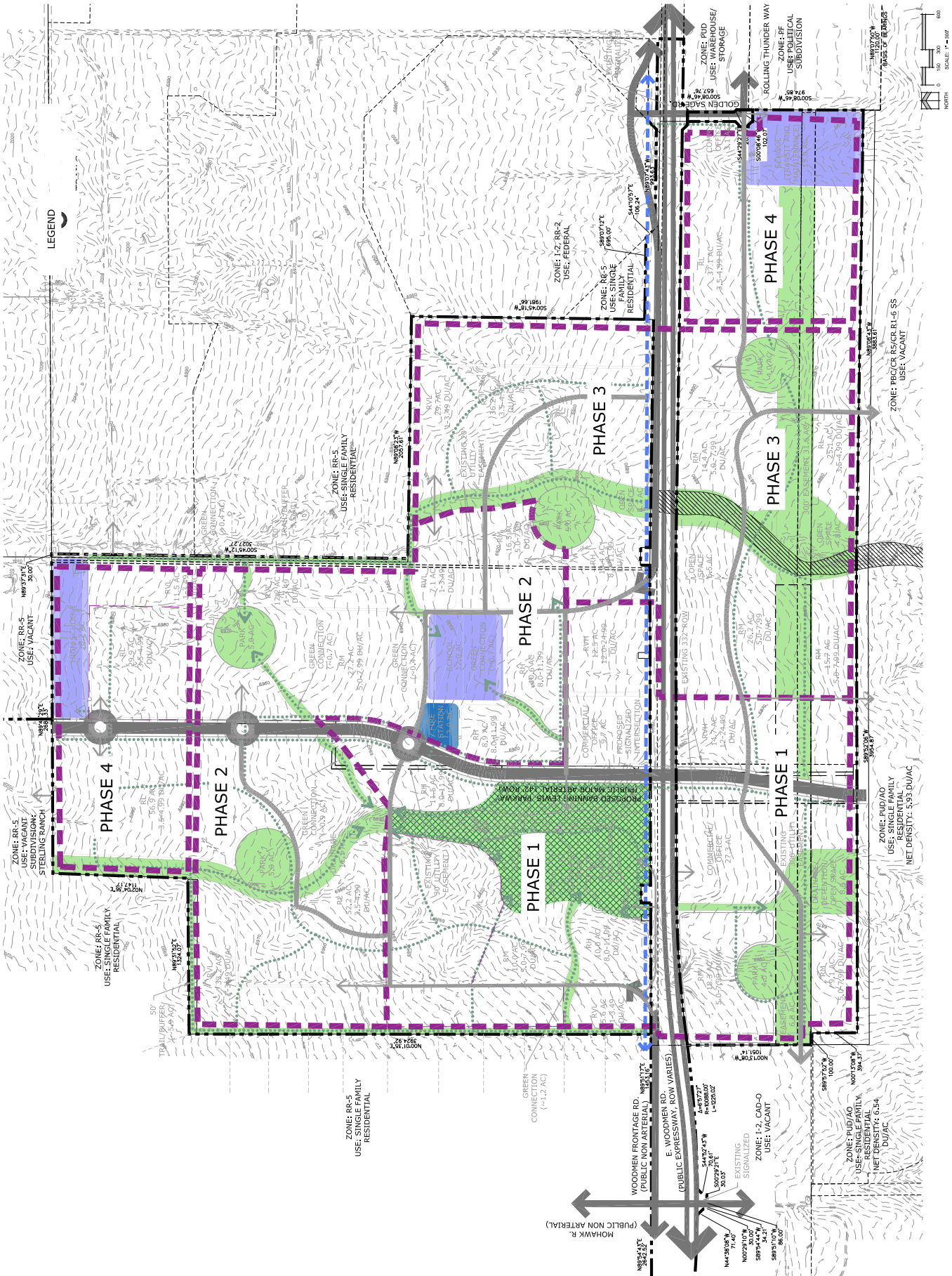
BANNING LEWIS
RANCH NORTH
NORWOOD

DATE: 12/20/12
BY: [Signature]
CHECKED BY: [Signature]
DATE: 01/23/13
BY: [Signature]
CHECKED BY: [Signature]
DATE: 02/20/13
BY: [Signature]
CHECKED BY: [Signature]

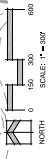
TRAILS CONCEPT

3 OF 3

CPC PUP 19-001.25



LEGEND



CONCEPT PLAN