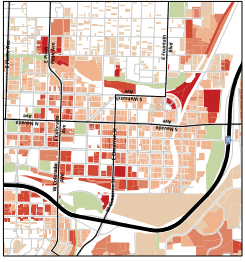
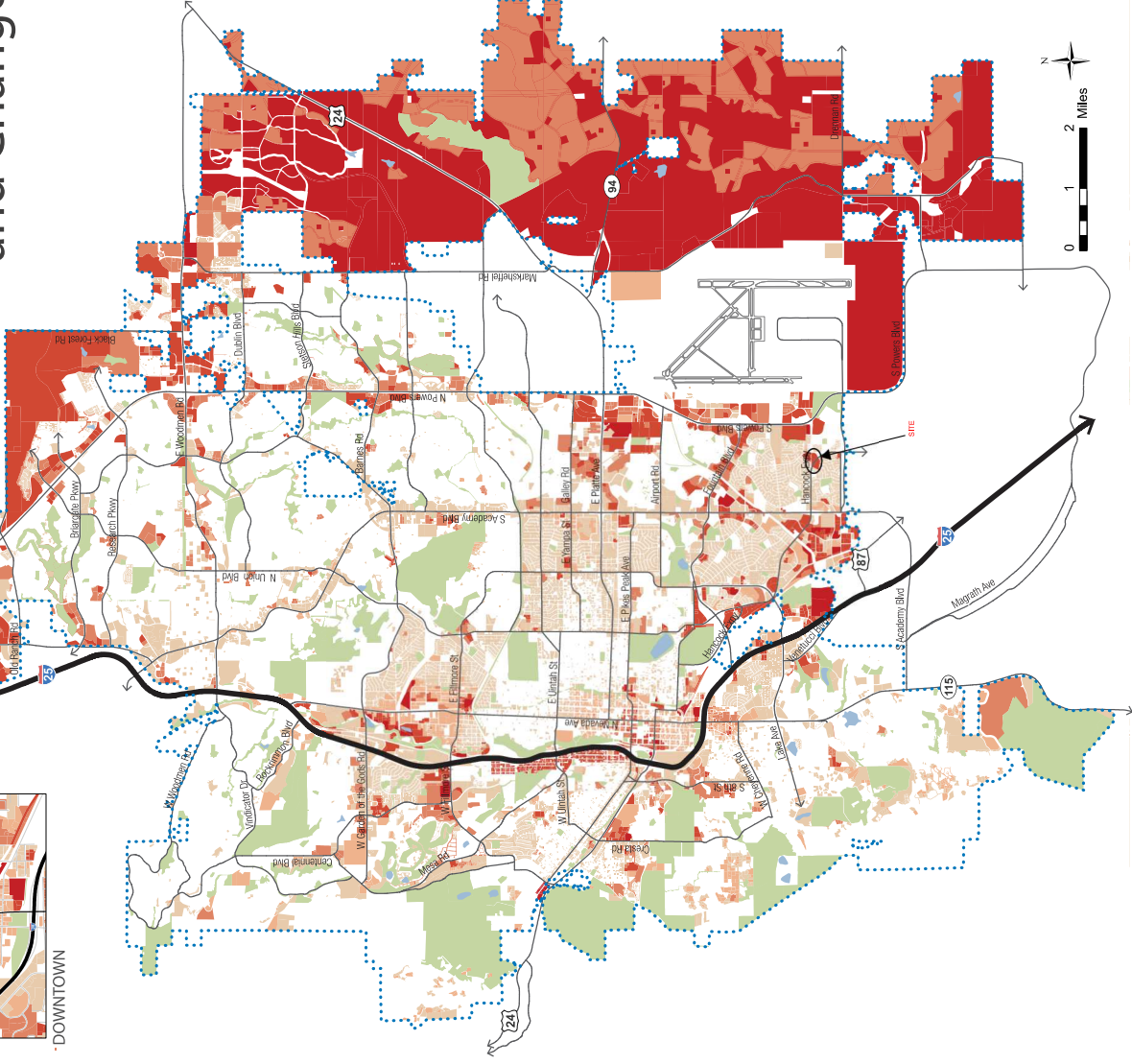


Areas of Capacity and Change



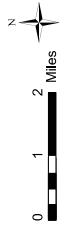
DOWNTOWN



Areas of Change
 Low 3 5 7 High

City Boundary
 Interstate 25
 Major Roads

Parks
 Waterbodies



This map is intended to provide a general indication of potential development changes across the city based on parcel level information. Elements considered in identifying the degree of change include zoning, development pressure, vacancy, and environmental constraints. A greater number of elements that could impact the development of a parcel results in a higher score. The parcels with a higher score are deeper red on the map. Change in development could include changing land uses, densification, or development of vacant lands.