

Project Update

Dave Watt, PE
CDOT Resident Engineer

Colorado Springs City Council
May 11, 2015

Agenda

- Goals
- Purpose and Benefits
- Status
- Project Configuration
- General Schedule
- Team Members

Project Goals

1. Maximize overall safety, capacity and operation of the interchange and the surrounding transportation network within the Project budget.
2. Complete project construction to be fully operational by December 1, 2017.
3. Minimize impacts and inconvenience to the community, motorists, businesses, downtown and the public during construction.
4. Achieve an aesthetically-pleasing design compatible with current and future amenities and enhancements in and around the interchange.

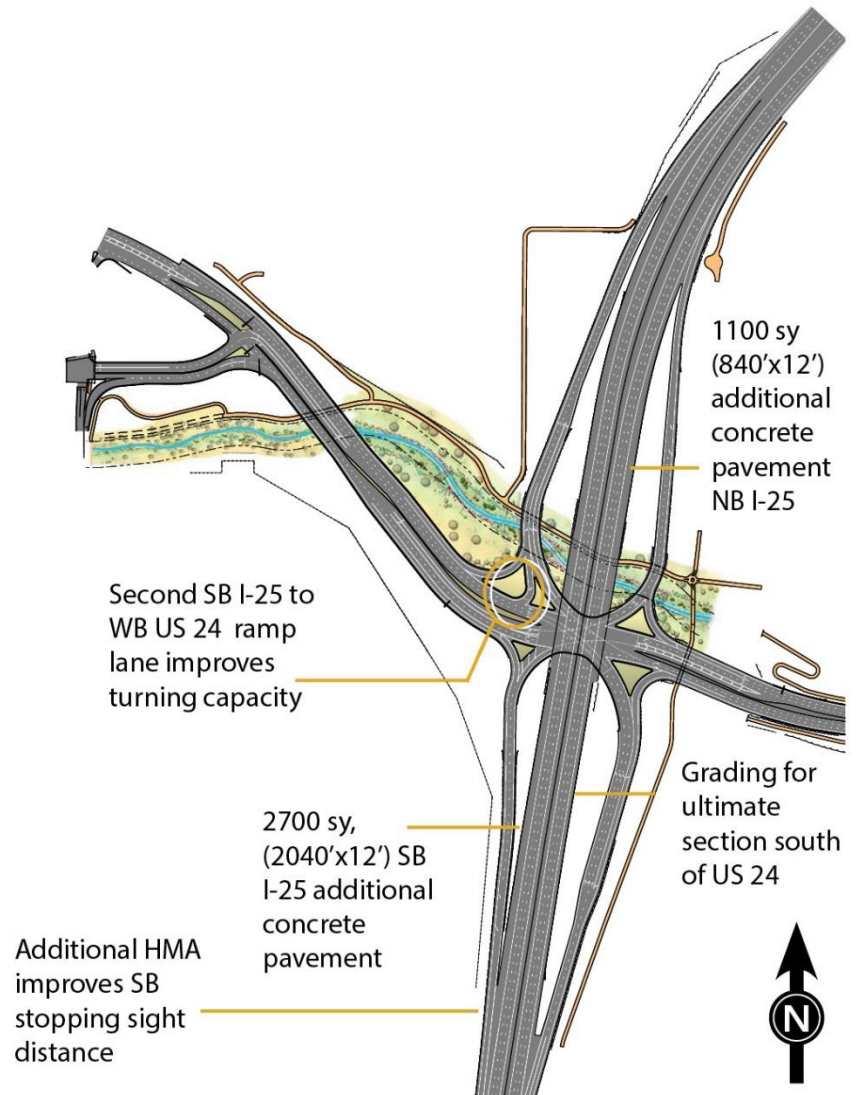
Purpose and Benefits

- Improve Safety
- Improve Capacity
- Provide 6-lanes on I-25
- Improve Interchange Traffic Flow
- Improve Trail Connectivity

Status

- Kraemer North America and Tsiouvaras, Simmons Holderness Design/Build Team Selected
- Notice To Proceed 1 Issued April 2, 2015
- Design efforts underway
- Initial site preparations underway
- Initial Construction Phase is beginning in June

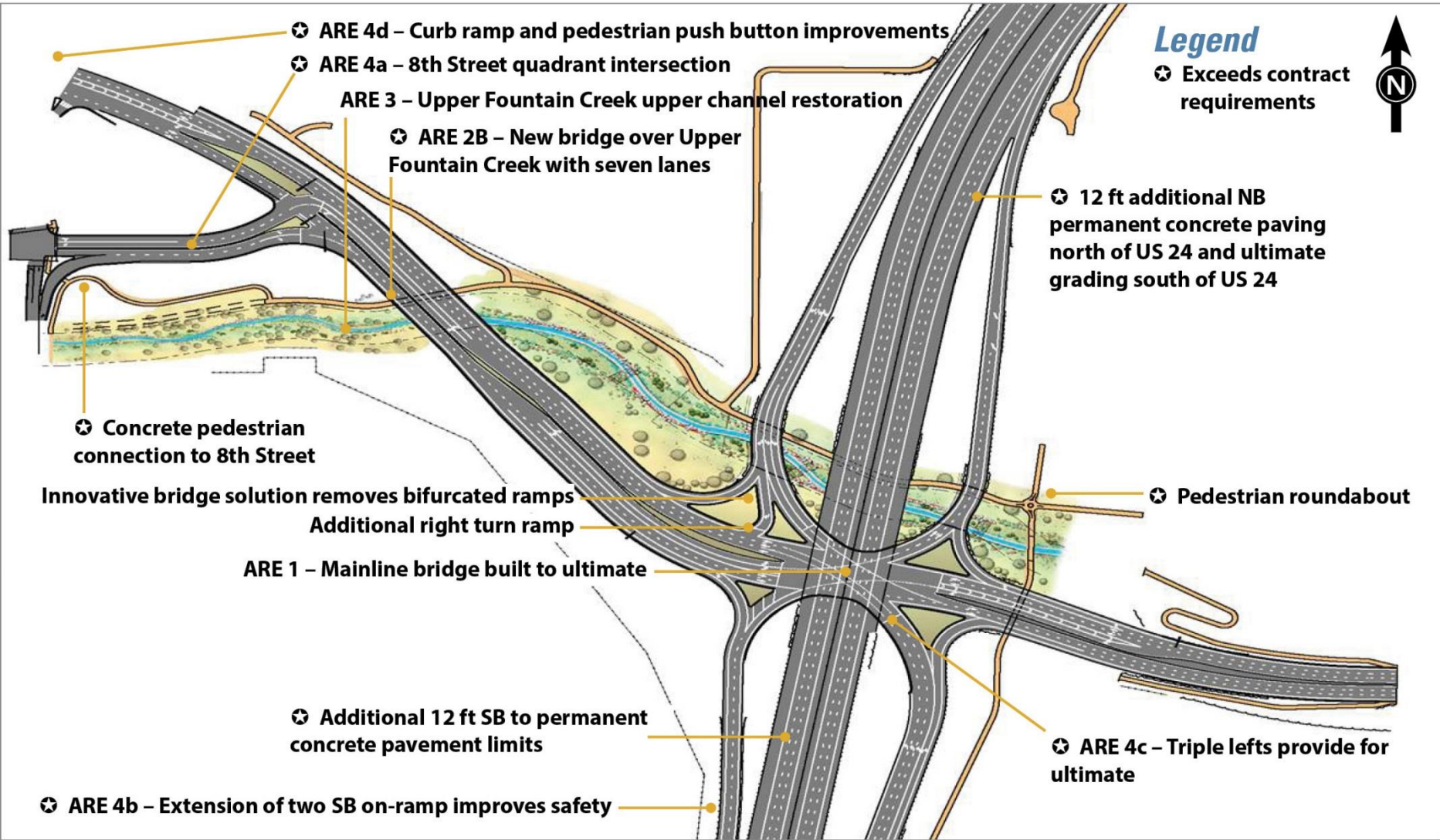
Project Configuration



I-25 / Cimarron Interchange

DESIGN-BUILD PROJECT

COLORADO DEPARTMENT OF TRANSPORTATION



I-25 / Cimarron Interchange

DESIGN-BUILD PROJECT

COLORADO DEPARTMENT OF TRANSPORTATION



I-25 / Cimarron Interchange

DESIGN-BUILD PROJECT

COLORADO DEPARTMENT OF TRANSPORTATION



FM 11 11 14

I-25 over Cimarron Looking East

I-25 / Cimarron Interchange

DESIGN-BUILD PROJECT

COLORADO DEPARTMENT OF TRANSPORTATION



I-25 / Cimarron Interchange

DESIGN-BUILD PROJECT

COLORADO DEPARTMENT OF TRANSPORTATION



Project Schedule

- Notice to Proceed April 2, 2015
- Design Underway April 2015
- Phase 0 Construction (Work Offline) June 2015
- Phase 1 Construction (Mainline Work) March 2016
- Project operationally complete December 1, 2017
- Construction Completion April 2018

I-25 / Cimarron Interchange

DESIGN-BUILD PROJECT

COLORADO DEPARTMENT OF TRANSPORTATION

Phase 0

June 2015 to March 2016

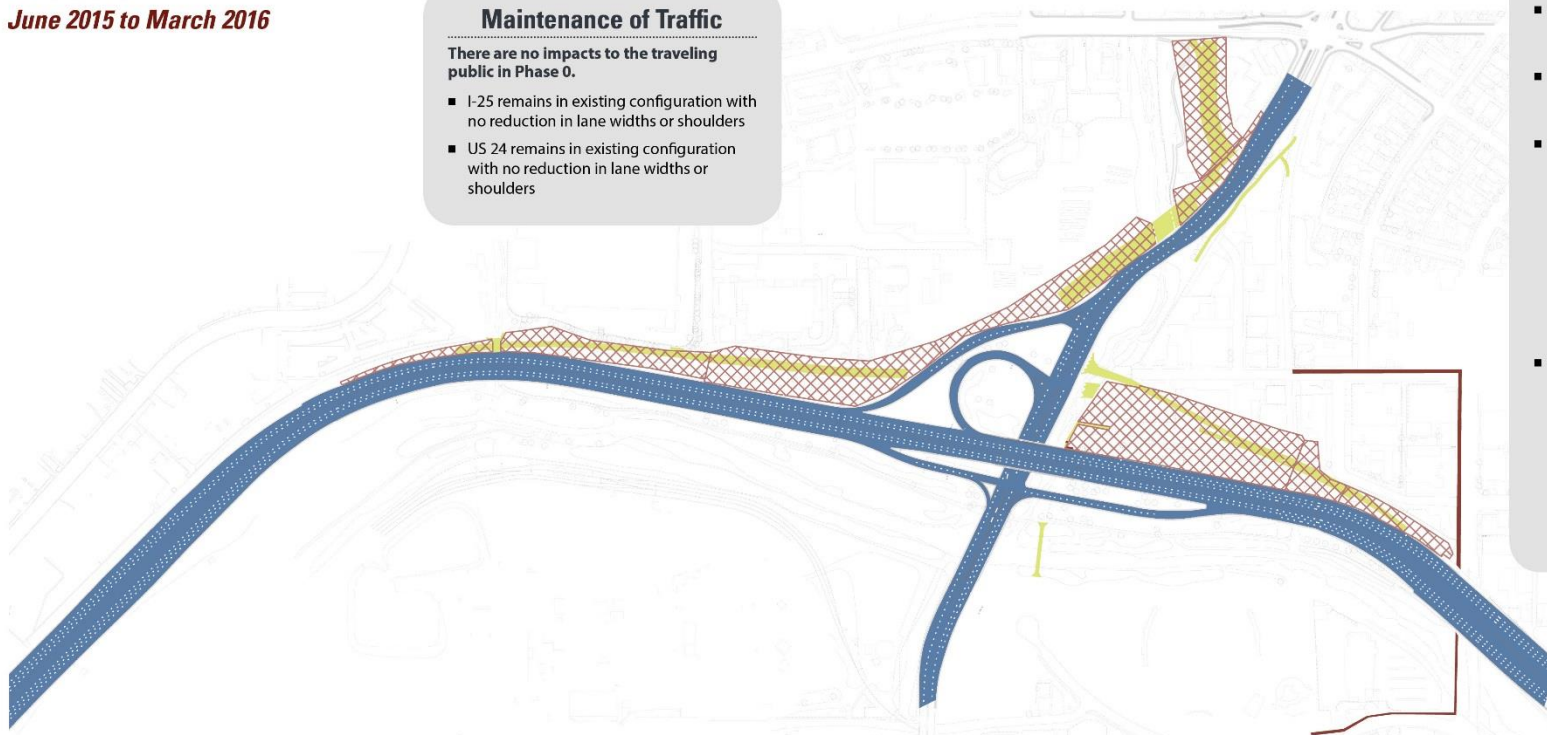
Maintenance of Traffic

There are no impacts to the traveling public in Phase 0.

- I-25 remains in existing configuration with no reduction in lane widths or shoulders
- US 24 remains in existing configuration with no reduction in lane widths or shoulders

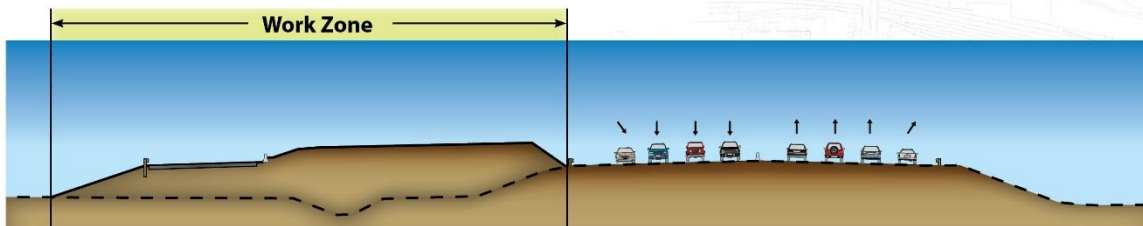
Key Construction Activities

- **Utilities** – construct 3000 feet of electric duct bank plus multiple water, gas, and fiber optic lines
- **Drainage** – install 60-inch storm sewer line, directionally jack and bore under I-25 with no traffic impacts
- **Roadway and Embankment**
 - SB I-25 off-ramp embankment, cut and fill
 - SB I-25 on-ramp embankment, fill
 - I-25 SB – off- and on-ramp; install walls and paving
 - ARE 4a – 8th Street quadrant intersection – embankment and paving
 - US 24 – build off line pavement
- **Bridges and Structures**
 - Temporary SB I-25 off-ramp over Upper Fountain Creek
 - EB US 24 bridge over Upper Fountain Creek
 - Pedestrian bridge over Monument Creek
 - Bear Creek Concrete Box Culvert extension



Legend

- Construction
- Location of Traffic
- Pedestrian/Bicycle Route
- Embankment



Phase 0 Typical Section of I-25 South of Upper Fountain Creek

I-25 / Cimarron Interchange

DESIGN-BUILD PROJECT

COLORADO DEPARTMENT OF TRANSPORTATION

Phase 1

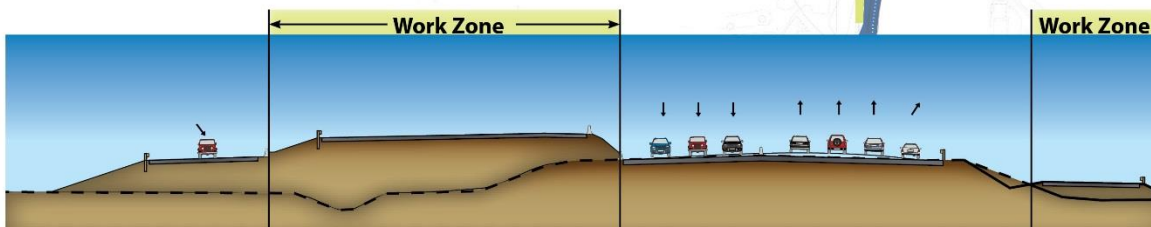
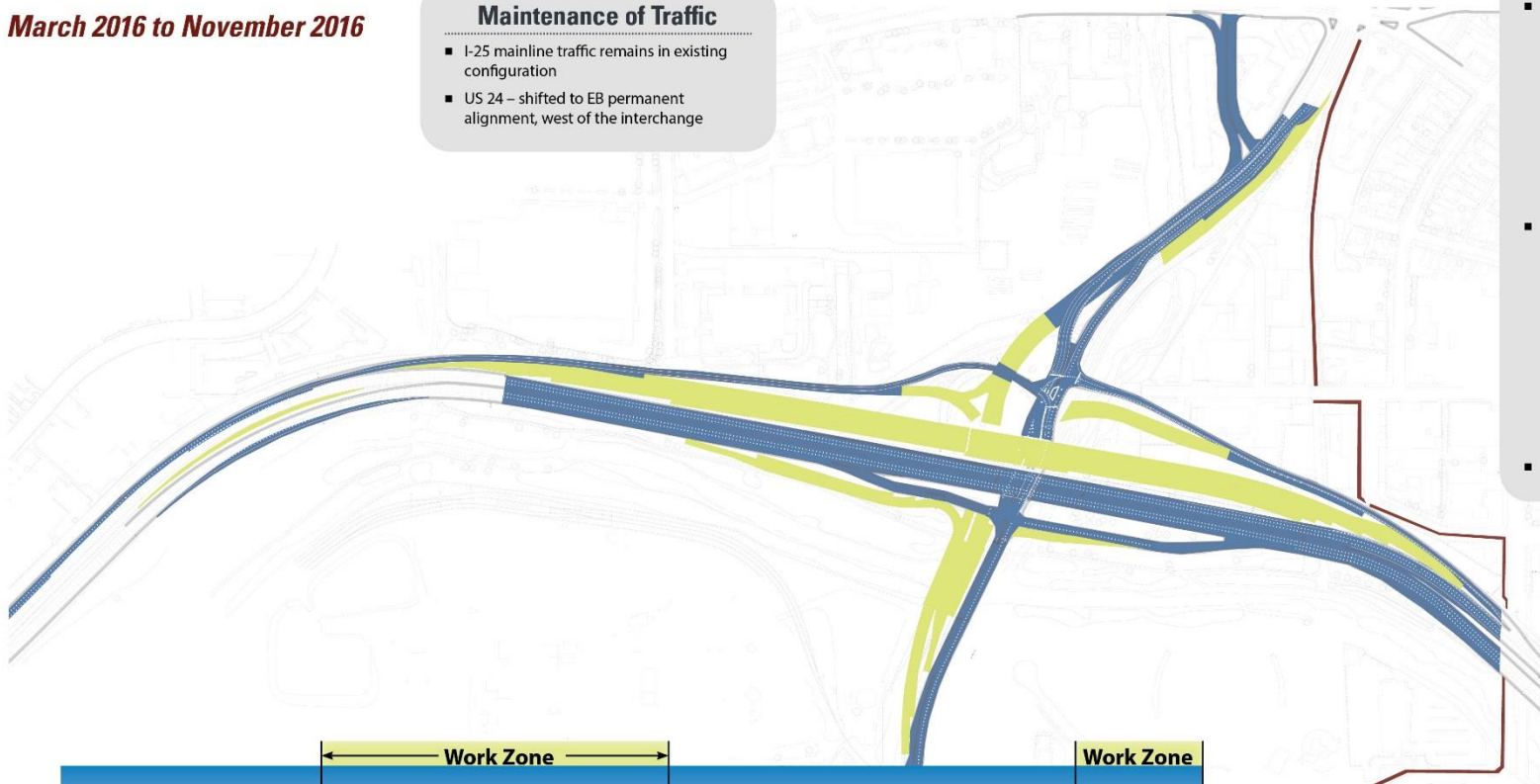
March 2016 to November 2016

Maintenance of Traffic

- I-25 mainline traffic remains in existing configuration
- US 24 – shifted to EB permanent alignment, west of the interchange

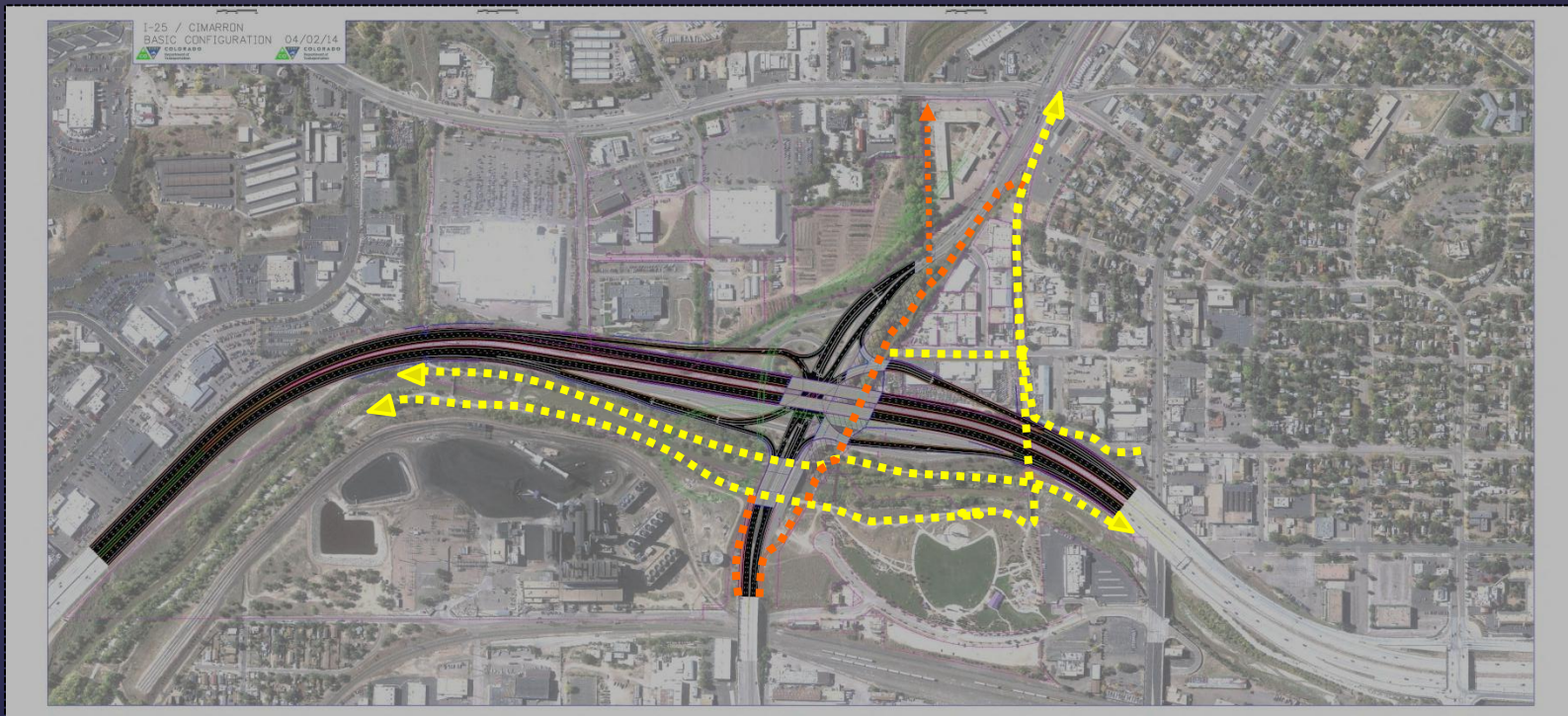
Key Construction Activities

- **Roadway and Embankment**
 - NB I-25 off-ramp fill south of US 24
 - Fill under new I-25 SB on-ramp
 - SB I-25 south end – fill under new alignment
 - Pave US 24 and Cimarron tie-ins
 - South end overlay as needed for tie-in (cross slope corrections)
 - Fastrack crossovers north/south end to shift NB onto new SB alignment
- **Bridges and Structures**
 - SB I-25 bridge
 - Cimarron over Lower Fountain Creek
 - US 24 over Upper Fountain Creek (remaining WB structure)
 - SB I-25 off-ramp over Upper Fountain Creek
 - Pedestrian bridge over Upper Fountain Creek
 - Temporary NB I-25 on-ramp bridge over Upper Fountain Creek
- **Trails** – Fountain Creek path



Phase 1 Typical Section of I-25 South of Upper Fountain Creek

Trail Network



- Connectivity
- Improve Safety
- Compatibility with Trails Master Plan
- Enhance Experience for Trail User

America the Beautiful Park Compatibility

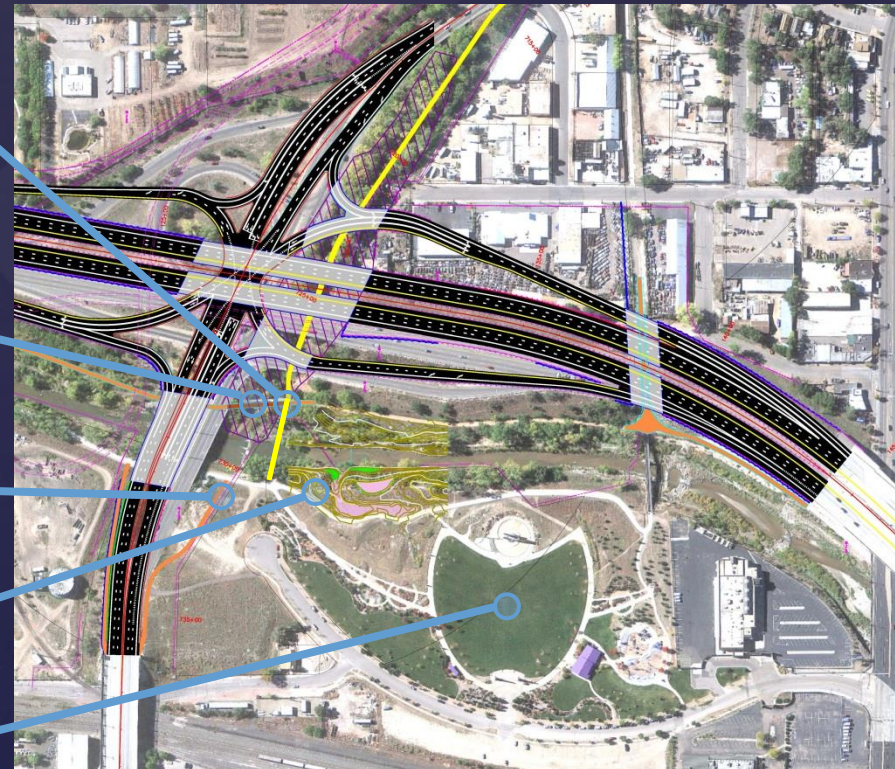
Alignment for Future Pedestrian Bridge Connection to the Park

Reset Existing Pedestrian Bridge over Fountain Creek

Connections from Cimarron Street to Park & Trail

Creekside Improvements

America the Beautiful Park



Executive Oversight Committee

- Karen Rowe – CDOT Region 2 Director
- Randy Jenson – FHWA
- Steve Cox and Travis Easton – City of Colorado Springs
- Sallie Clark – El Paso County
- Richard Zamora – CDOT Headquarters

Project Management Team

- Doug Lollar – CDOT Program Engineer
- Dave Watt – CDOT Resident Engineer
- Lesley Mace – CDOT Project Manager
- Nabil Haddad – CDO Innovative Contracting
- Rob MacDonald – PPACG
- Dahir Egal, George Jones – FHWA
- Kathleen Krager – City of Colorado Springs
- Andre Brackin – El Paso County
- Mark Scholfield – Consultant PM (Wilson)
- Dave Poling – Corridor Manager (PB)
- Scott Asher – Design Development Manager (Wilson)
- Lisa Streisfeld, Robert Frie – CDOT Environmental
- Lisa Bachman – Public Involvement
- Kevin Shanks – Aesthetics/Landscaping

Working Team Stakeholders (WTS)

- CDOT Resident Engineer – Dave Watt
- CDOT Project Manager – Lesley Mace
- Downtown Partnership, Mayor’s Downtown Leadership Team – Susan Edmondson
- City of CS City Council – Keith King
- City Economic Vitality – Bob Cope
- Southwest Downtown URA – Jim Rees
- Business – Gary Bradley
- Fountain Creek Watershed, Flood Control & Greenway District – Larry Small
- Greenway Fund – David Lord
- Organization of Westside Neighbors (OWN) – Welling Clark
- Old Colorado City Associates (OCCA) – Dave Van Ness
- CDOT Commissioner – Les Gruen
- Pikes Peak Area Council of Government – Craig Casper

Aesthetics/Landscaping/Trails Technical Team

- Allen Beauchamp, Al Brody, Dave Van DerWege – Bicycle Community
- Tasha Brackin – El Paso County Parks
- Victoria Chavez, Jennifer Irvine – El Paso County Traffic
- Stuart Coppedge – RTA Architects
- Brett Iverson – Colorado Springs Police Dept. Homeless Outreach Team
- Bill Koener – Trails and Open Space Coalition
- Chris Lieber, Connie Perry – City of Colorado Springs Parks, Recreation and Cultural Services
- Dave Munger – Council of Neighbors and Organizations
- Elena Nunez – Colorado Springs Utilities
- Jim Rees – City of Colorado Springs Urban Renewal Authority
- Brian Risley – CRP Architects
- Nolan Schriener – Land Planner / Architect
- Jon Severson – Urban Single Track Project
- Larry Small – Fountain Creek Watershed Flood Control & Greenway District

Questions/Discussion