

2014 Revenue Above the 2014 TABOR Revenue/Spending Limit

August 10, 2015

Kara Skinner, Chief Financial Officer
Chris Lieber, Park Development Manager

TABOR Calculation

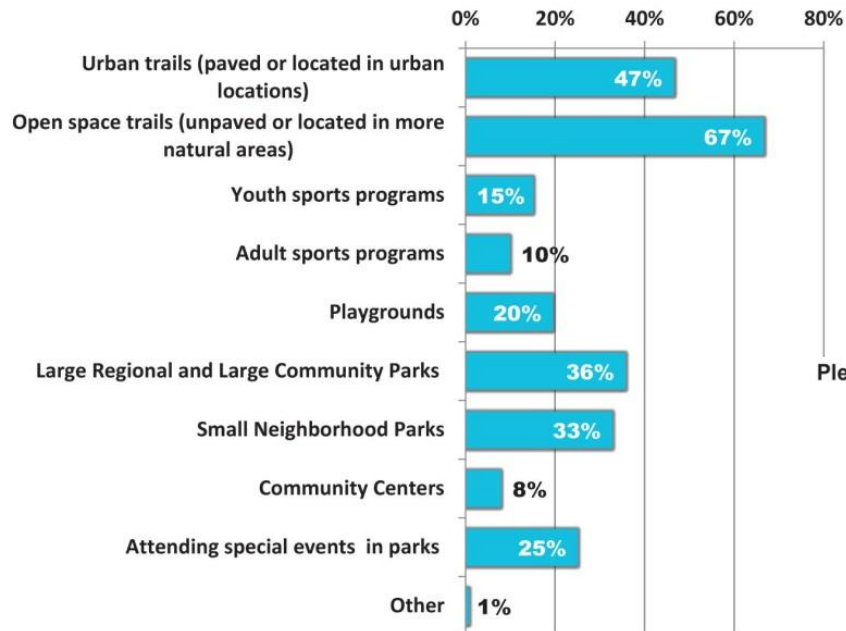
- Fiscal Year (FY) revenue/spending is allowed to grow by inflation plus City growth in the prior calendar year
 - City growth equals net change in assessment roll value
- FY calculation includes 16 funds of the City
 - Not just a sales tax calculation
 - Includes all revenue that is not specifically excluded in TABOR (exclusion include sale of assets, market adjustments, gifts)
- 2014 FY spending allowable increase of 4.82%
 - 2013 city growth: 2.05%
 - 2013 inflation: 2.77%
- From 2013 to 2014, FY spending increased 5.74%
 - \$2,100,000 of revenue over the allowable limit

Defining the Need and Opportunity for Trail Improvements

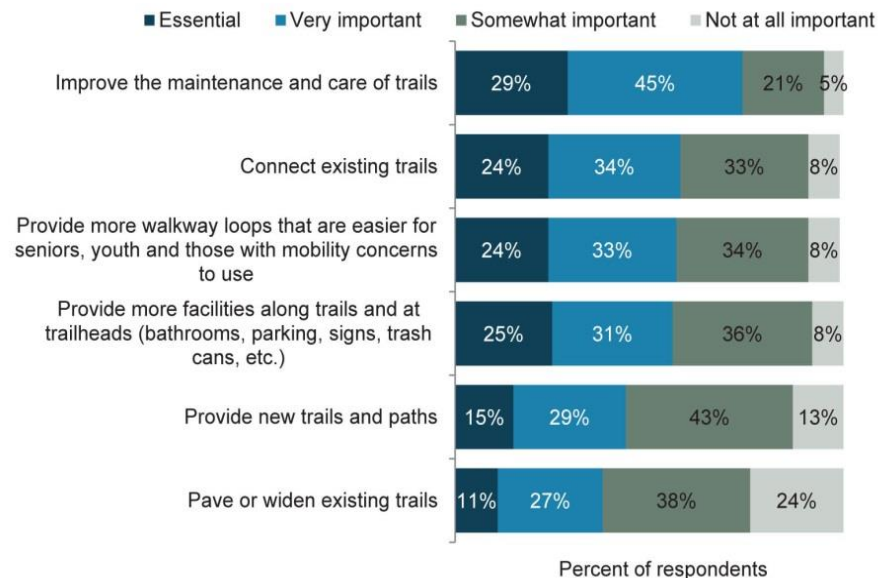
- Community Input
 - Statistically Valid Surveys
 - Online Surveys
 - Key Pad Polling
- Park System Master Plan Recommendations
- Inventory and Analysis of Existing Trails
- Gaps in Funding for Trail Repair and Renovation

Community Input

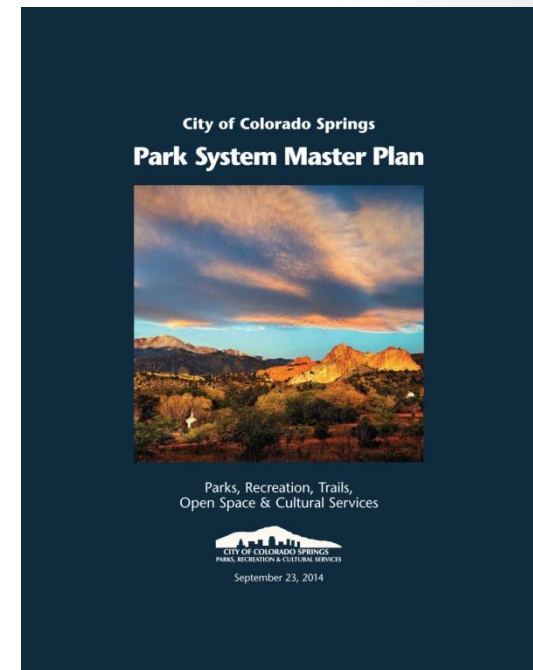
Which of these City programs or amenities does your household use most often? (Select up to 3)



Please rate how important, if at all, you think it is that the City undertake each of the following related to trails and walkways within City parks and open space?



Park Master Plan Recommendations



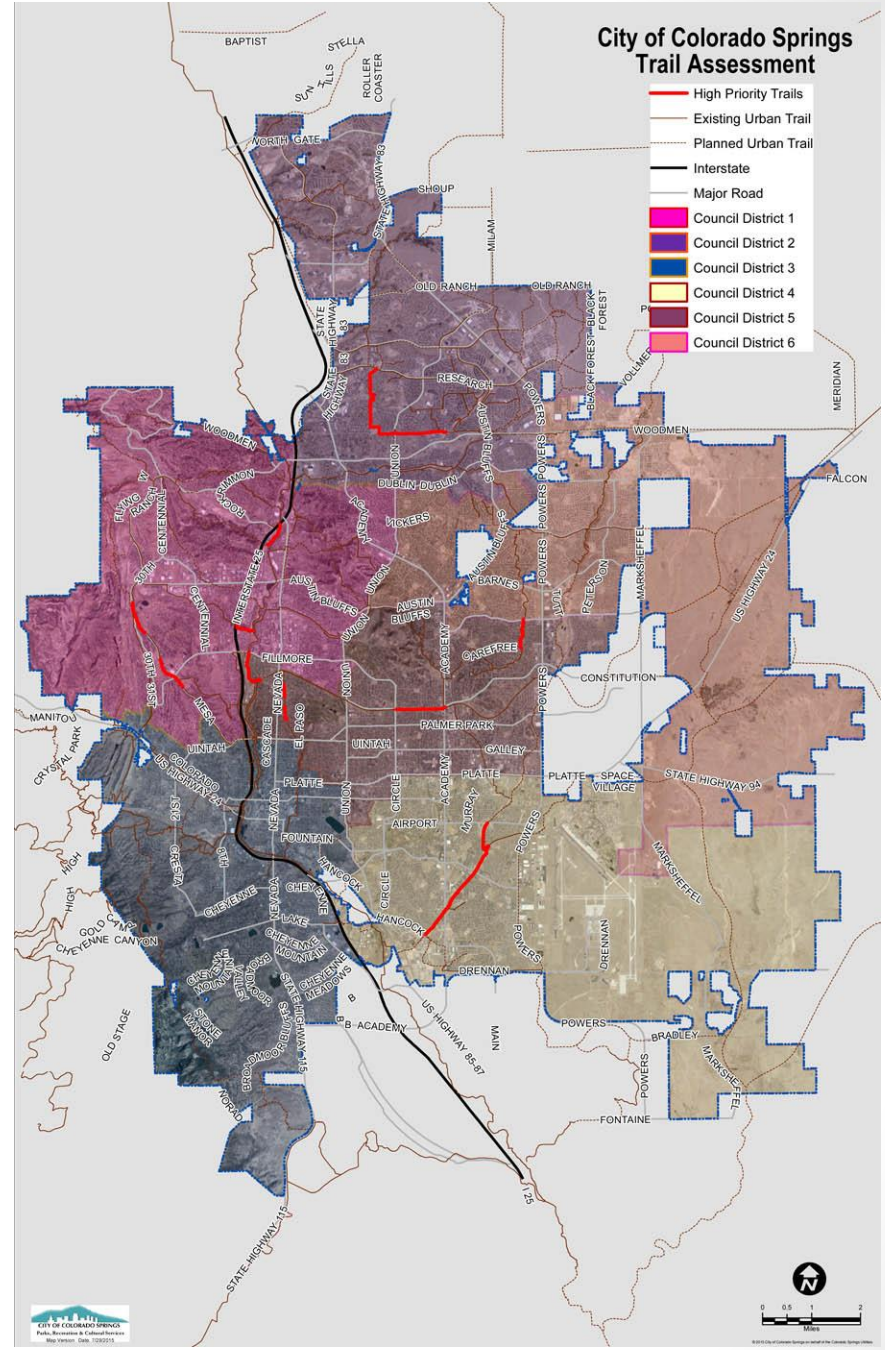
- Emphasis on “Taking Care of What We Have”
- 32.4 miles of Identified Trail Maintenance Needs
- Wayfinding, Signage, and Safety Improvements
- Neighborhood Connections

Inventory and Analysis



Proposed Trail Improvements

- Homestead Trail
- Palmer-Mesa Trail
- Pikes Peak Greenway Trail
- Rock Island Trail
- Sand Creek Trail
- Shooks Run Trail
- Sinton Trail
- Skyline Trail

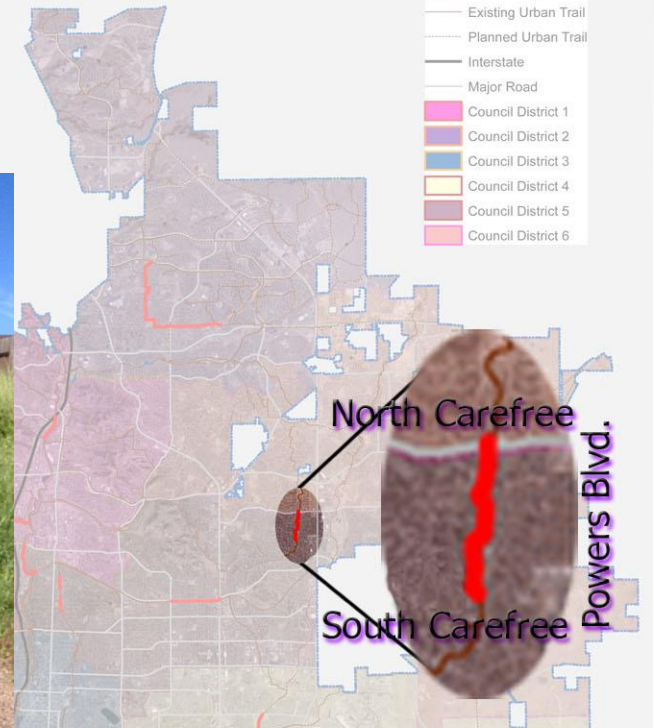


Homestead Trail

North Carefree to South Carefree – 3/4 mile

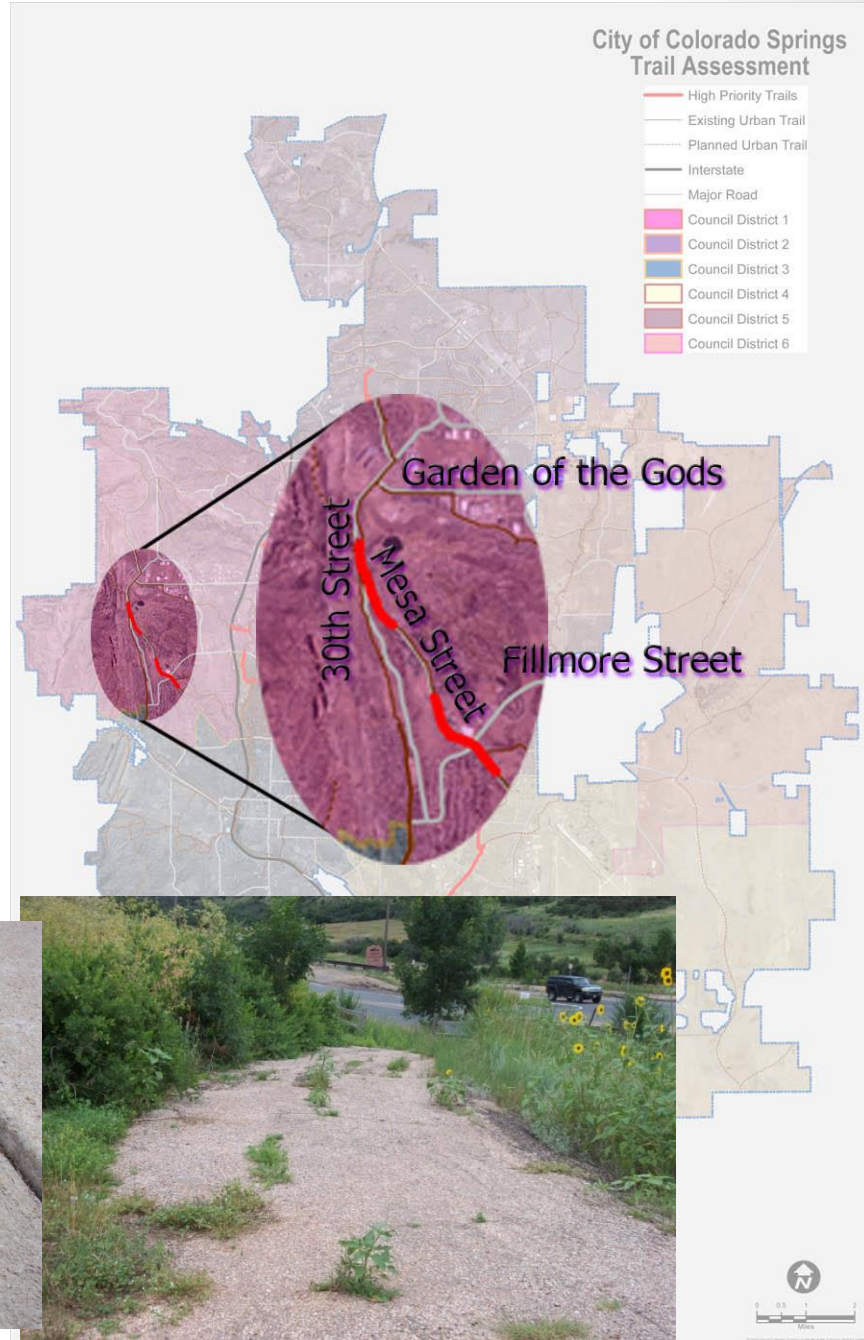
City of Colorado Springs Trail Assessment

- High Priority Trails
- Existing Urban Trail
- Planned Urban Trail
- Interstate
- Major Road
- Council District 1
- Council District 2
- Council District 3
- Council District 4
- Council District 5
- Council District 6



Palmer-Mesa Trail

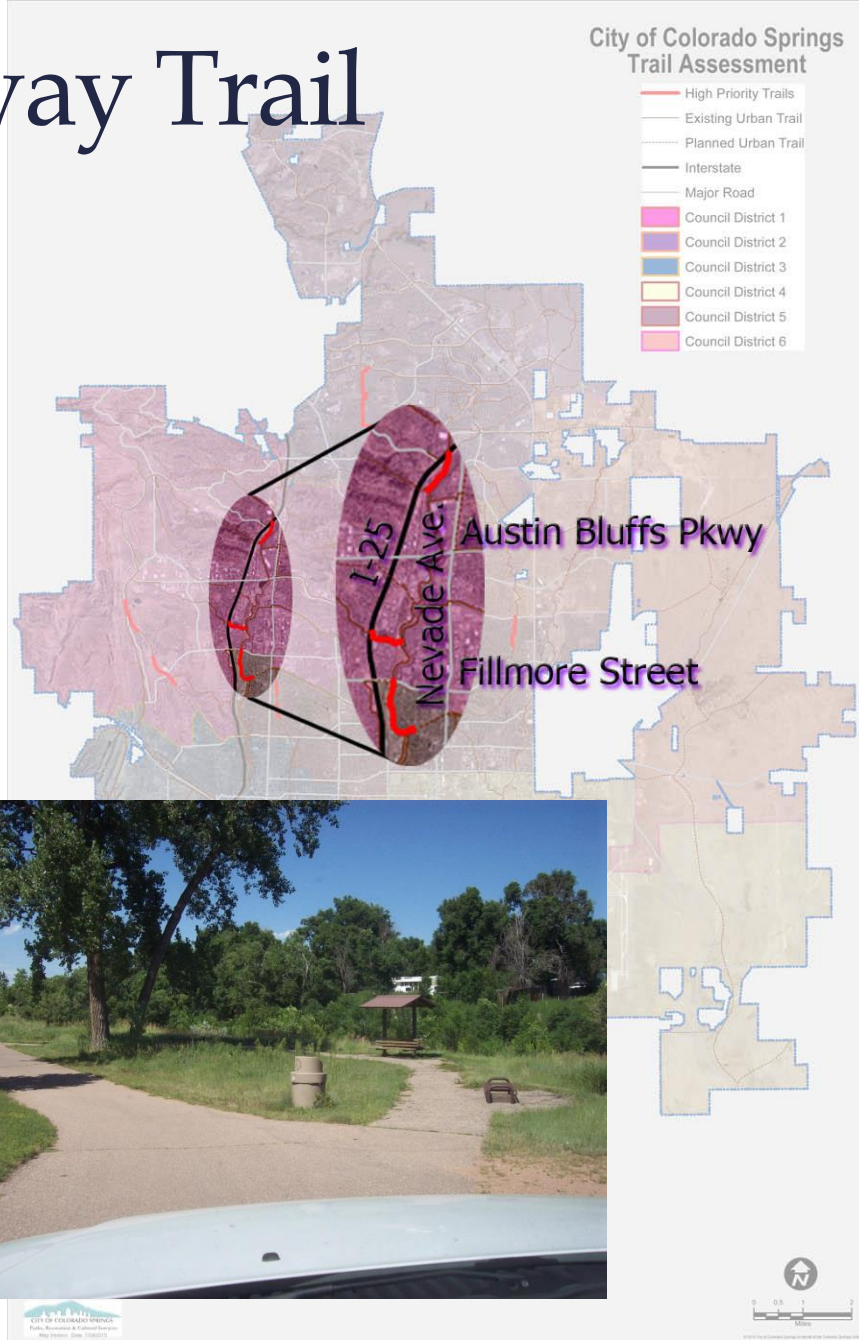
Blair Bridge to Garden of the Gods,
Stately View to Homes Middle School
1.25 miles



Pikes Peak Greenway Trail

Fillmore to Rock Island

Mark Dabling to I-25 – 1.25 miles



Rock Island Trail

Circle Drive to Academy Blvd.

3/4 mile



Sand Creek Trail

Airport Road to Hancock Expressway – 2 miles



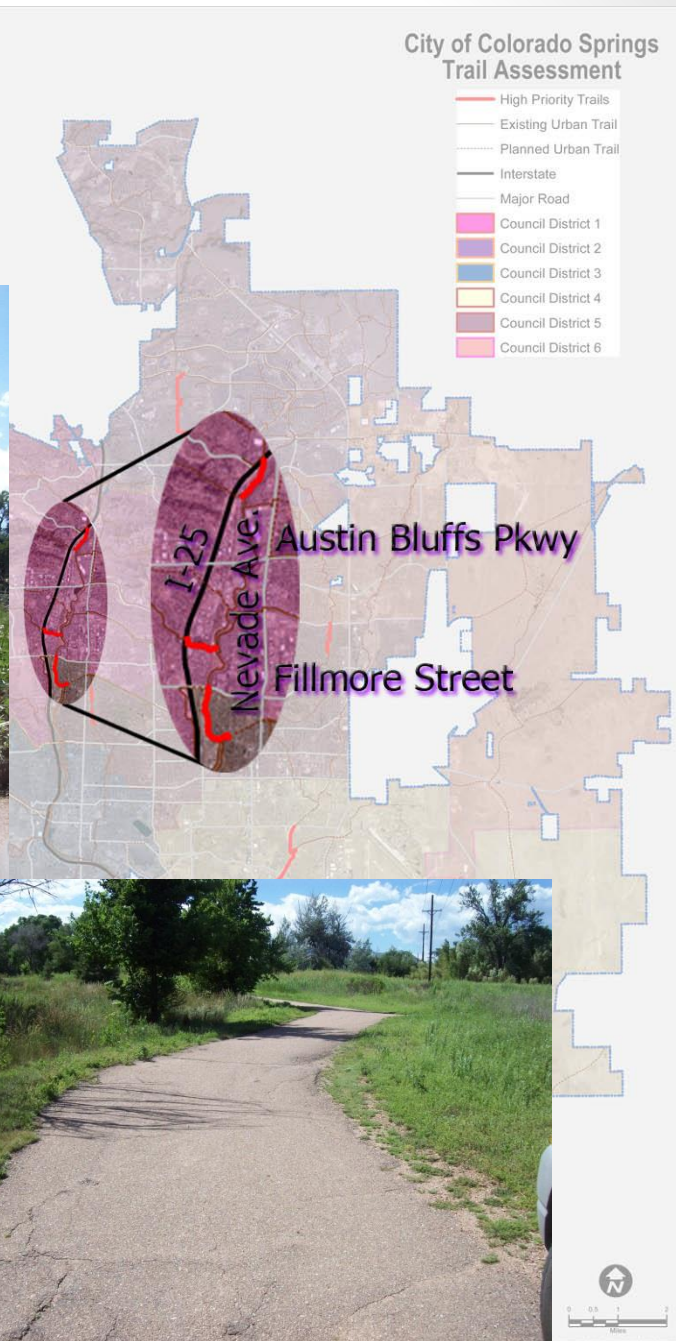
Shooks Run Trail

Jackson Street to East Jefferson Street
Fontanero Street to Wahsatch Ave. – 1/2 mile



Sinton Trail

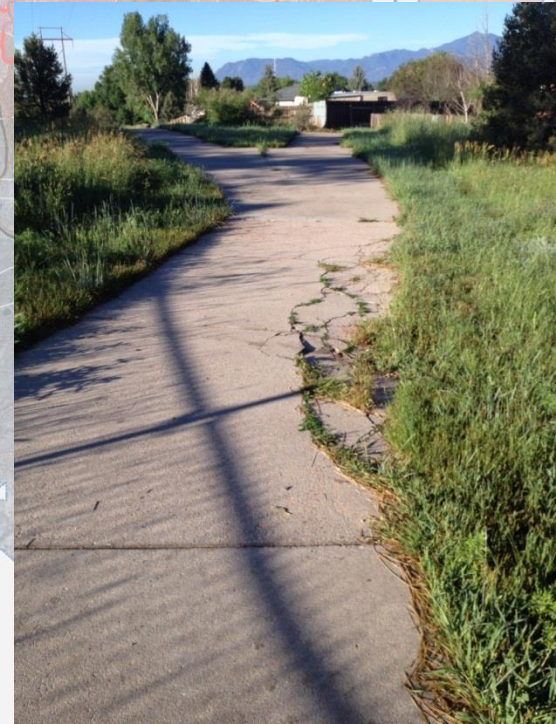
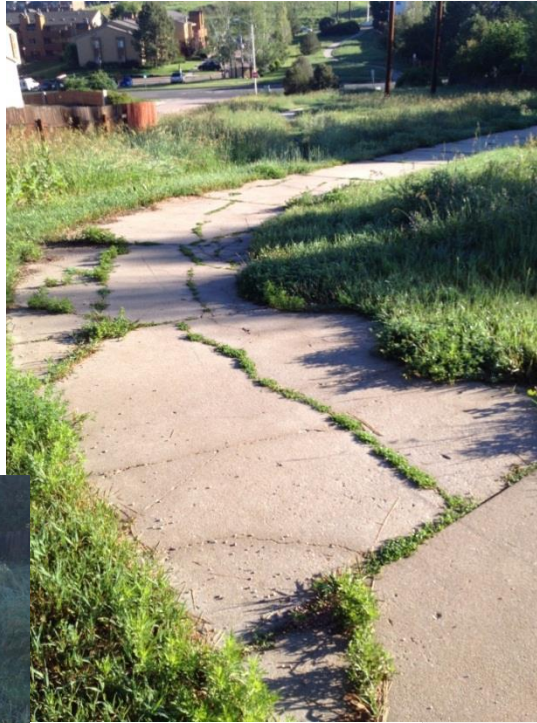
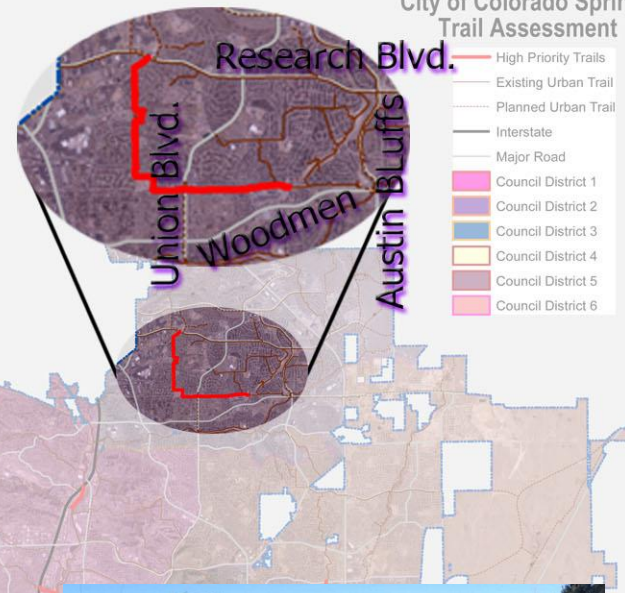
Mark Dabling to Ellston Street – 1/2 mile



Skyline Trail

Research Blvd. to Woodmen Road – 2 miles

City of Colorado Springs Trail Assessment



Ballot Question

- WITHOUT RAISING TAXES, SHALL THE CITY OF COLORADO SPRINGS BE PERMITTED TO RETAIN AND SPEND UP TO \$2,100,000 FOR PARK TRAIL IMPROVEMENTS AS A VOTER APPROVED REVENUE CHANGE, THIS AMOUNT BEING THE ESTIMATED 2014 REVENUES ABOVE THE 2014 FISCAL YEAR REVENUE/SPENDING LIMITATIONS?

YES

NO

Ballot Text

If approved by the electors, the City of Colorado Springs shall be authorized to retain and spend up to \$ 2,100,000 only for the purposes of repair, renovation and improvement to existing segments of priority multi-use park trails in the City, which amount is the estimated amount by which 2014 fiscal year revenues exceeded the 2014 Fiscal Year revenue and spending limitations set forth in Article X § 20 of the Colorado Constitution and Section 7-90 of the City Charter, often referred to as the Taxpayer's Bill of Rights or TABOR. These revenues will be earmarked and used only for repair, renovation and improvement to existing segments of such trails in the City, which work will be contracted out to the private sector. There is no tax increase of any kind associated with the measure. These funds are intended to be used for work on existing segments of the following trail corridors:

- Homestead Trail
- Palmer Mesa Trail
- Pikes Peak Greenway
- Rock Island Trail
- Sand Creek Trail
- Shooks Run Trail
- Sinton Trail
- Skyline Trail