

Notice: According to Colorado law you must commence any legal action based upon any defect in this survey within three years after you first discover such defect. In no event may any action based upon any defect in this survey be commenced more than ten years from the date of the certification shown hereon.

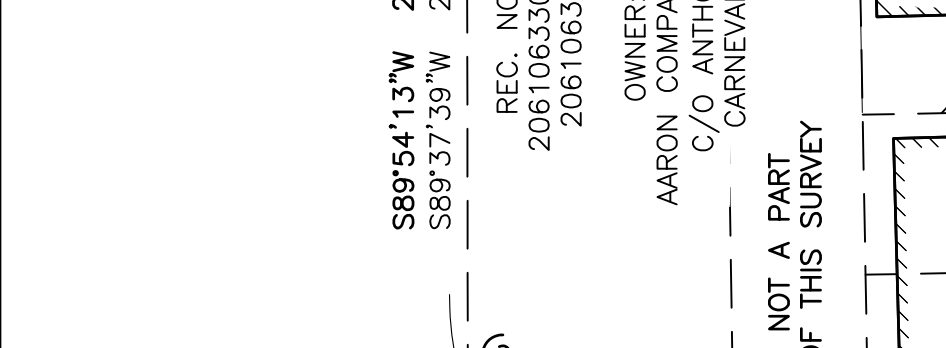
No.	Description	By	Date

177 S. Tiffany Dr., Unit 1 • Pueblo West, CO 81007 • 719.582.1270
 www.c Clark.com



LEGEND

- FOUND MONUMENT (AS NOTED)
- (1) NO. 5 REBAR W/ 1-1/4" YELLOW PLASTIC CAP "ILLEGIBLE"
- (2) NO. 5 REBAR W/ 1-1/4" YELLOW PLASTIC CAP "ALESSI PLS 30130"
- (3) NO. 5 REBAR W/ 1-1/4" YELLOW PLASTIC CAP "MARTH 22573"
- (4) NO. 4 REBAR W/ 1-1/4" YELLOW PLASTIC CAP "ALESSI PLS 30130"
- (5) NO. 4 REBAR W/ 1-1/4" YELLOW PLASTIC CAP "ILLEGIBLE"
- (6) 1/2" IRON PIPE (NO CAP)
- (7) 1" IRON PIPE (NO CAP)
- (8) 2" IRON PIPE (NO CAP)
- (9) 4" IRON PIPE (NO CAP)
- SET MONUMENT (AS NOTED)
- (1) NO. 5 REBAR W/ 1-1/4" GREEN PLASTIC CAP "PLS 38245"
- BUILDING FOOTPRINT
- CONCRETE WALL



Revisions

Revisions

Revisions

Revisions

Revisions

Revisions

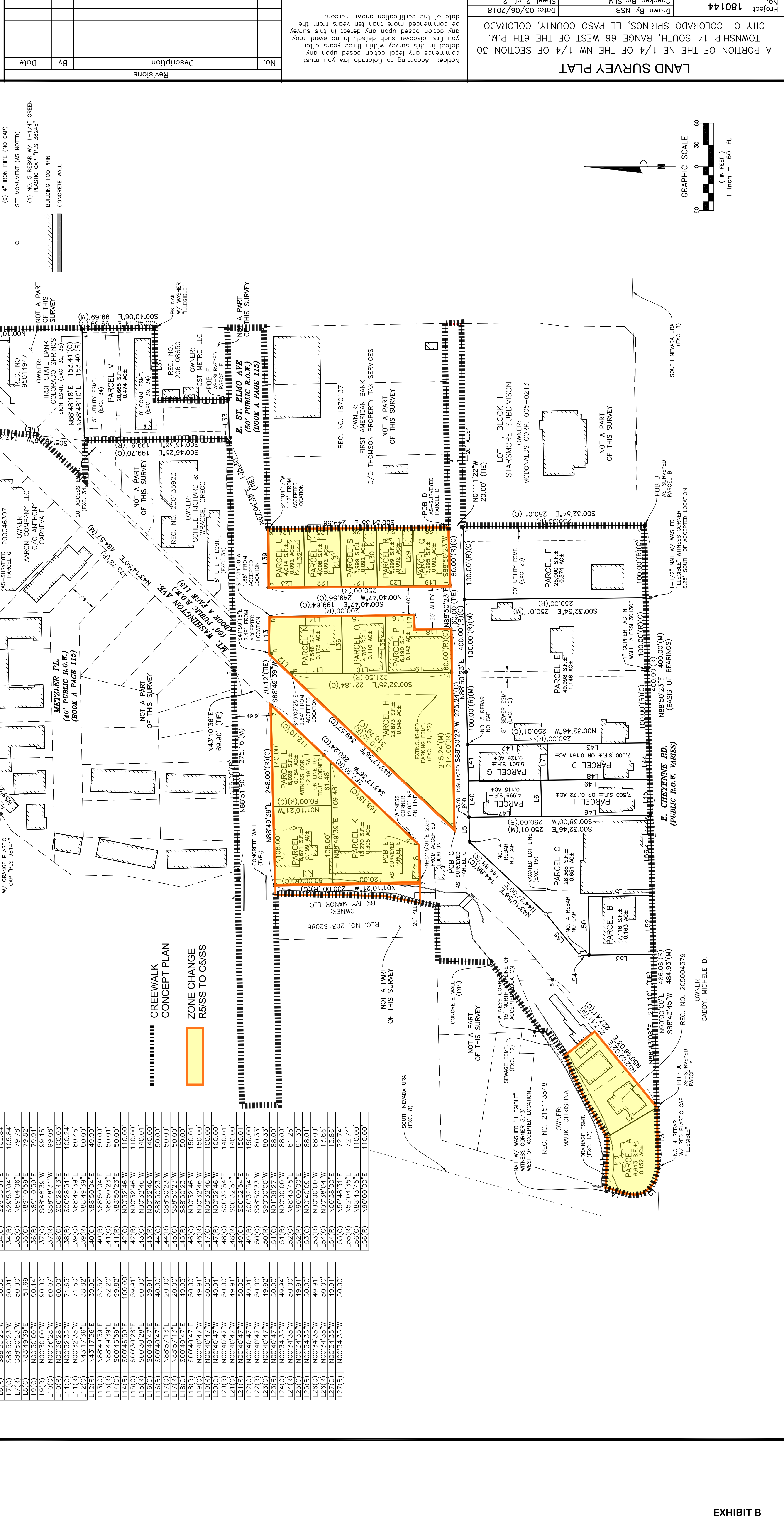
Revisions

Revisions

Revisions

Revisions

Revisions



CURVE	RADIUS	ARC LENGTH	DELTA ANGLE	CHORD LENGTH	CHORD BEARING
C1(R)(C)	35.00'	65.25'	106°49'10"	56.20'	S37°30'49"E
C2(R)(C)	60.00'	30.58'	29°12'03"	30.25'	S44°11'32"E
C3(R)(C)	10.00'	23.20'	132°55'16"	18.34'	N23°08'52"W

LINE	BEARING	DISTANCE
L28(C)	N00°34'35"W	49.91'
L28(R)	S88°25'27"E	70.00'
L29(C)	N88°50'25"E	80.09'
L29(R)	S30°37'38"E	79.40'
L30(C)	N88°50'27"E	80.18'
L30(R)	S88°44'01"W	80.27'
L31(C)	N88°50'29"E	80.27'
L31(R)	N16°05'29"E	80.00'
L4(R)	N17°21'28"E	28.65'
L5(M)	N88°49'24"E	34.11'
L5(R)	N80°00'00"E	53.56'
L6(C)	S88°47'57"W	53.62'
L6(R)	S88°50'23"W	105.84'
L7(R)	S88°50'23"W	50.00'
L8(C)	N88°49'39"E	79.78'
L8(R)	N88°49'39"E	51.69'
L9(C)	N00°30'00"W	90.14'
L9(R)	N00°30'00"W	90.00'
L10(C)	N00°36'28"W	60.07'
L10(R)	N00°36'28"W	60.00'
L11(C)	N00°32'35"W	71.63'
L11(R)	N88°49'39"E	71.50'
L12(C)	N43°17'36"E	38.82'
L12(R)	N88°49'39"E	39.90'
L13(C)	N88°49'39"E	52.20'
L13(R)	N88°49'39"E	99.82'
L14(C)	N00°46'59"E	50.00'
L14(R)	N00°46'59"E	100.00'
L15(C)	S00°30'28"E	59.91'
L15(R)	S00°30'28"E	60.00'
L16(C)	S00°40'47"E	39.91'
L16(R)	S88°50'23"W	40.00'
L17(C)	N88°57'13"E	20.00'
L17(R)	S88°57'13"E	20.00'
L18(C)	S00°40'47"E	49.95'
L18(R)	S00°40'47"E	50.00'
L19(C)	N00°40'47"W	49.91'
L19(R)	N00°40'47"W	50.00'
L20(C)	N00°40'47"W	49.91'
L20(R)	N00°40'47"W	50.00'
L21(C)	N00°40'47"W	49.91'
L21(R)	N00°40'47"W	50.00'
L22(C)	N00°40'47"W	49.91'
L22(R)	N00°40'47"W	50.00'
L23(C)	N00°40'47"W	49.92'
L23(R)	N00°40'47"W	50.00'
L24(C)	N00°34'35"W	49.94'
L24(R)	N00°34'35"W	49.91'
L25(C)	N00°34'35"W	49.91'
L25(R)	N00°34'35"W	50.00'
L26(C)	N00°34'35"W	49.91'
L26(R)	N00°34'35"W	50.00'
L27(C)	N00°34'35"W	49.91'
L27(R)	N00°34'35"W	72.74'
L27(C)	N00°34'35"W	72.74'
L27(R)	N90°00'00"E	110.00'

