

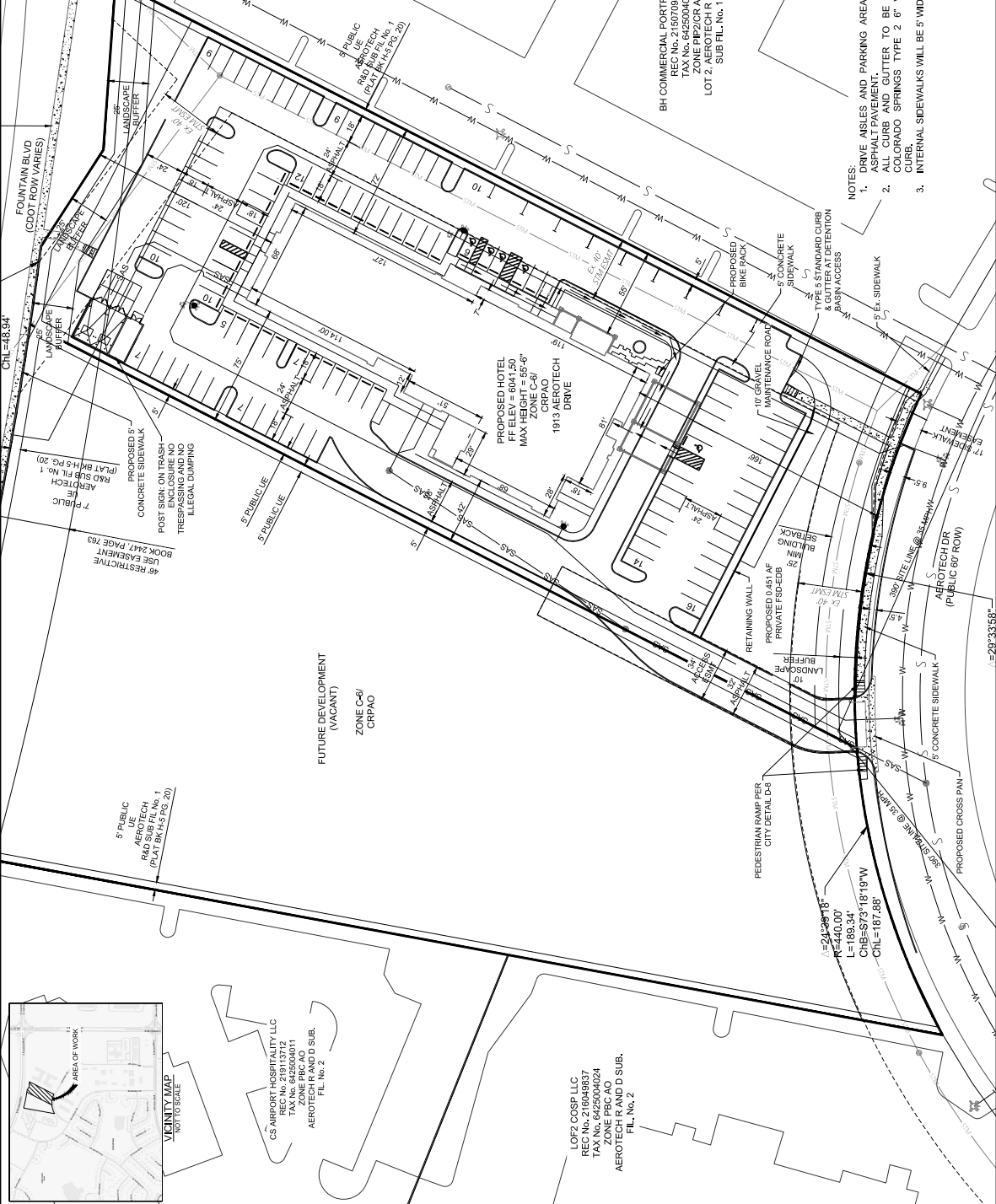
REVISION	DESIGNED	DATE	5/27/2022
	CHECKED	DATE	5/27/2022
	DRAWN	DATE	5/27/2022
	NOT FOR CONSTRUCTION		

RESPEC
171 SOUTH TEJON ST.
COLORADO SPRINGS, CO 80903
PHONE (719) 283-8171

STAY 101, LLC
7130 COMMERCE CENTER
COLORADO SPRINGS, CO 80919

HOMER2 HOTEL
DEVELOPMENT PLAN

DRAWING NUMBER: 2
SHEET 8



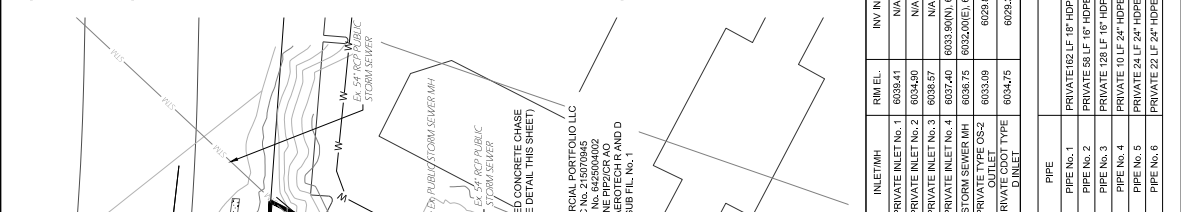
DATE: May 27, 2022 9:29 AM BY: REBECCA MCCONNELL
NAME: PROJECT10127-2022-29-PLAN-DEVELOPMENT PLANNING127-DEVELOPMENT PLANNING

DEVELOPMENT PLAN

BENCHMARKS
 FINIS MONUMENT 1924, 3.25' BRASS PINE CAP IN FORMER CONIC TRAFFIC LIGHT PED SOUTHWEST INTERSECTION OF S CHELTON RD AND S ACADEMY BLVD.
 EL: 5,861.04 (NAVD 88)

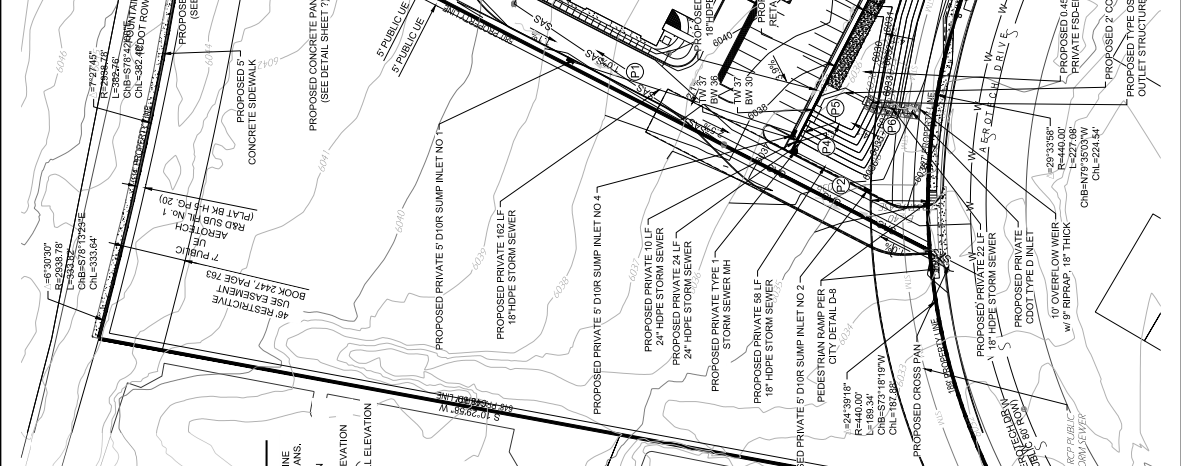
NOTES

- CONTRACTOR TO FIELD VERIFY LOCATION AND ELEVATION OF BENCHMARKS PRIOR TO CONSTRUCTION AND NOTIFY ENGINEER OF ANY ISSUES. UTILITY RELOCATION MAY BE REQUIRED.
- FINISH GRADE OF SOIL EDGES ALONG PAVEMENT TO BE 1/2" BELOW EDGE OF PAVEMENT.
- STRIP AND STOCKPILE TOPSOIL FROM GRADING AREAS. USE STOCKPILED TOPSOIL AND IMPORTED TOPSOIL AS NECESSARY FOR SURFACE RESTORATION.
- GRADES SHOWN ARE FINAL SURFACE GRADES AFTER COMPLETION OF SURFACE IMPROVEMENTS AND PLACEMENT OF TOPSOIL.
- GRADE AREAS AT SITE PERIMETER TO MATCH GRADES OF ADJACENT PARCELS.
- REMOVE EXCESS SOIL FROM SITE AND DISPOSE OF PROPERLY IN ACCORDANCE WITH APPLICABLE REGULATIONS.
- PROVIDE TEMPORARY GRADING FEATURES SUCH AS BERMS, SWALES, SUMPS AND BASINS TO MANAGE EXCESS WATER DURING CONSTRUCTION PROCESS. STORM WATER DURING LEAVING THE SITE SHALL MEET ALL FEDERAL, STATE AND LOCAL QUALITY REQUIREMENTS.
- ALL DISTURBED AREAS TO BE RE-SEED OR LANDSCAPE PER LANDSCAPE PLAN PROVIDED BY OTHERS.
- ALL PRIVATE TO PUBLIC STORM SEWER CONNECTIONS MUST BE INSPECTED BY AN ENGINEERING DEVELOPMENT REVIEW INSPECTOR.



INLET/WH	RIM ELEV.	INV IN ELEV.	INV OUT ELEV.
PRIVATE INLET No. 1	6036.41	N/A	6035.91
PRIVATE INLET No. 2	6034.90	N/A	6031.40
PRIVATE INLET No. 3	6036.57	N/A	6033.07
PRIVATE INLET No. 4	6037.40	6033.90(N)	6032.40
STORM SEWER MH	6036.75	6032.00(E)	6031.00(S)
PRIVATE TYPE OS-2	6033.09		6029.57
PRIVATE COOT TYPE D INLET	6034.75	6029.34	6026.40

PIPE	PIPE No. 1	PIPE No. 2	PIPE No. 3	PIPE No. 4	PIPE No. 5	PIPE No. 6
PRIVATE 10" LF 18" HDPE @ 1.80%						
PRIVATE 50' LF 18" HDPE @ 0.50%						
PRIVATE 128' LF 18" HDPE @ 1.70%						
PRIVATE 10' LF 24" HDPE @ 1.00%						
PRIVATE 24' LF 24" HDPE @ 1.00%						
PRIVATE 22' LF 24" HDPE @ 0.50%						



SPOT ELEVATION SYMBOLS

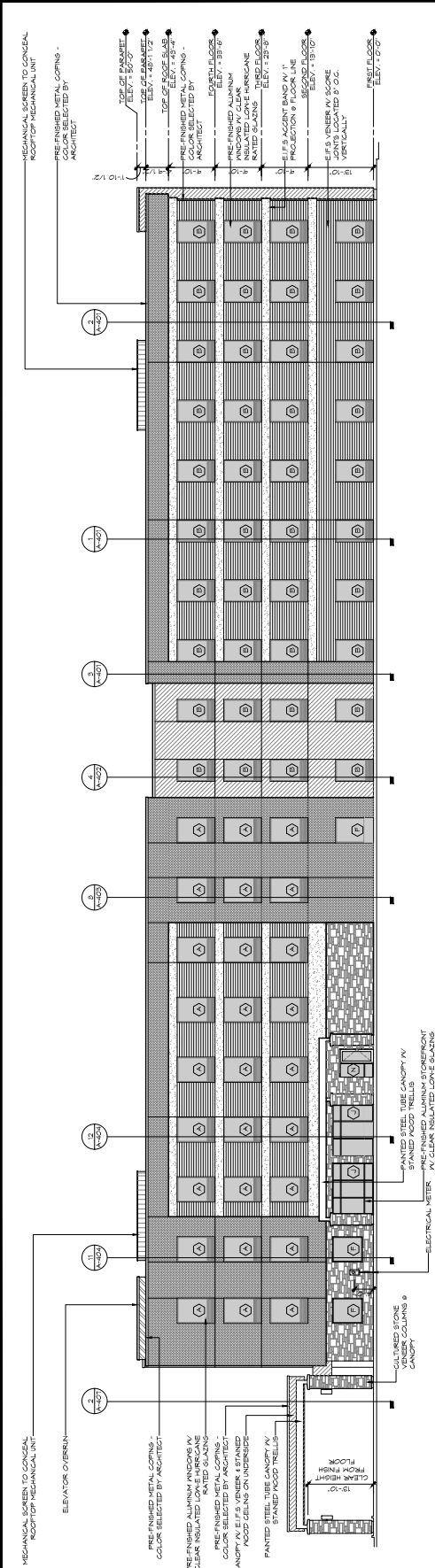
- ALL SPOT ELEVATIONS ARE AT FLOWLINE UNLESS OTHERWISE NOTED IN THE PLANS.
- FF FINISHED FLOOR ELEVATION
- TW TOP OF RETAINING WALL ELEVATION
- BW BOTTOM OF RETAINING WALL ELEVATION

CS AIRPORT HOSPITALITY LLC
 REC No. 219113712
 TAX No. 842504024
 AEROTECH R AND D SUB. FIL. No. 2

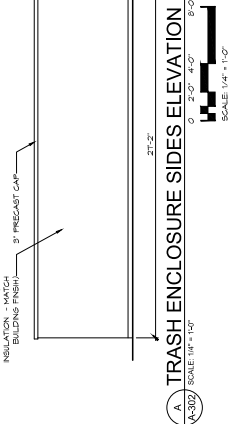
LOFZ COSP, LLC
 REC No. 219113712
 TAX No. 842504024
 ZONE PRC AO
 AEROTECH R AND D SUB. FIL. No. 2

PROPOSED PRIVATE 5\"/>

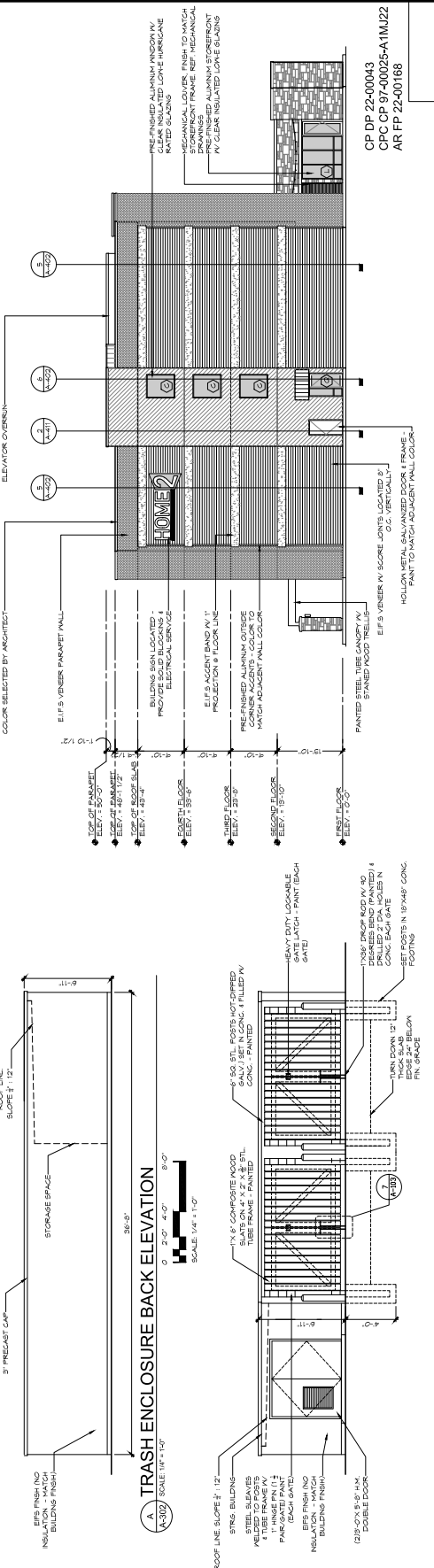
CP DP 22-00043
CPC CP 97-00025-A1MJJ2
AR PF 22-00168



1 EAST ELEVATION
SCALE: 3/32" = 1'-0"
SCALE: 3/32" = 1'-0"



A TRASH ENCLOSURE SIDES ELEVATION
SCALE: 1/4" = 1'-0"



A TRASH ENCLOSURE BACK ELEVATION
SCALE: 1/4" = 1'-0"

2 NORTH ELEVATION
SCALE: 3/32" = 1'-0"
SCALE: 3/32" = 1'-0"

A TRASH ENCLOSURE FRONT ELEVATION
SCALE: 1/4" = 1'-0"