

# Downtown Colorado Springs

Transit Station Relocation Study  
July 25, 2016  
Brian Vitulli





# The Project

## The Need:

- Operations
  - No room for expansion
  - No room for additional modes
- Safety and Access
  - Mixed vehicle/pedestrian flow
  - ADA access difficult
  - Slow boarding times
- Experience
  - Dark and uninviting
  - No amenities
- Economic Revitalization
  - Highest and best use in this location?
  - Mature area



# The Goals

## Operational Enhancement

- Efficiency / capacity
- Multimodal access & connections
- Connectivity to activity centers

## Safety Improvements

- Reduce conflict:  
buses/vehicles/peds/bikes
- Increase passenger safety

## Rider Experience

- Passenger amenities
- Transit system access & visibility
- City identity / community asset
- Ridership

## Economic Revitalization

- Transit Oriented Development (TOD)
- Long-term downtown redevelopment
- Joint-use on/off-site
- Realistic, cost-effective near-term implementation



## Focus Groups

- Convened ~20 local/regional leaders:
  - Business, economic and land development
  - Transit / transportation
  - Community / social services
  - First responders
  - Health / wellness

## Stakeholder & Technical Working Groups

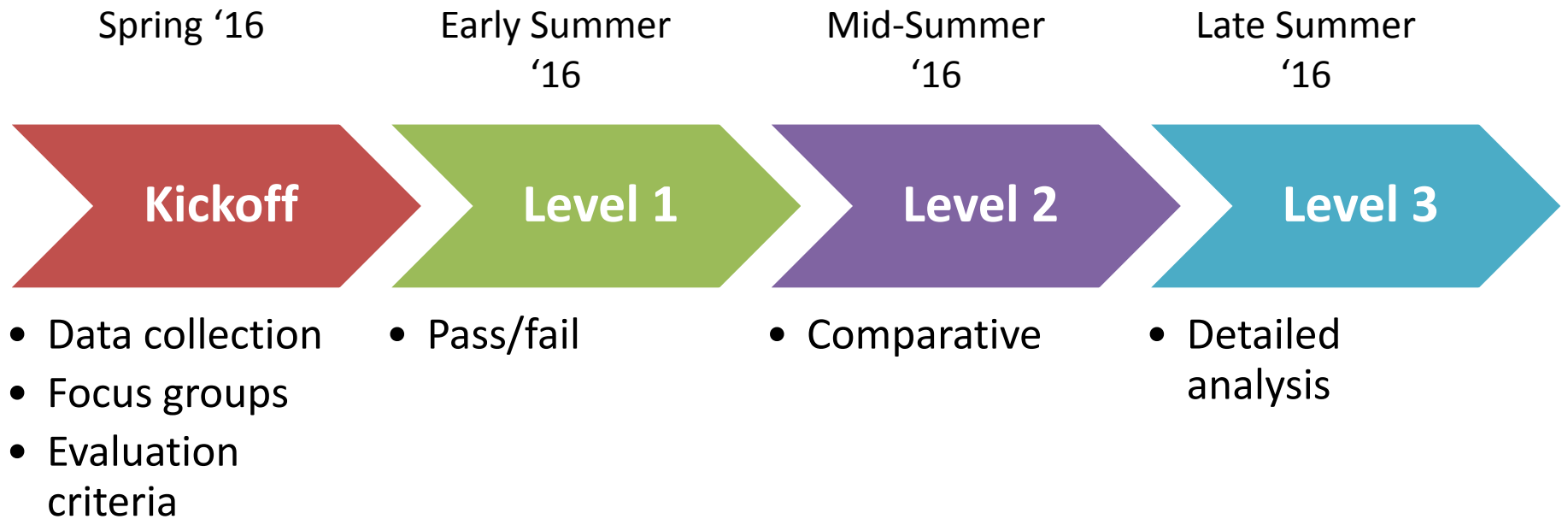
- Meet three (3) times at key milestones
  - Project kickoff
  - Preliminary site screening
  - Preferred sites
- Critical conduit between project team the community and agency partners

## Open House Workshops

- Conduct two (2) at key milestones
  - Preliminary site screening
  - Recommended site

## Project Materials

- Digital
  - Website / social / e-updates
- Print
  - On-board materials
  - Fact sheets / FAQ
- Local news media
- Clear/consistent messages



*Stakeholder input integrated at each screening level.*

## **PROCESS & SCHEDULE**

## Functional

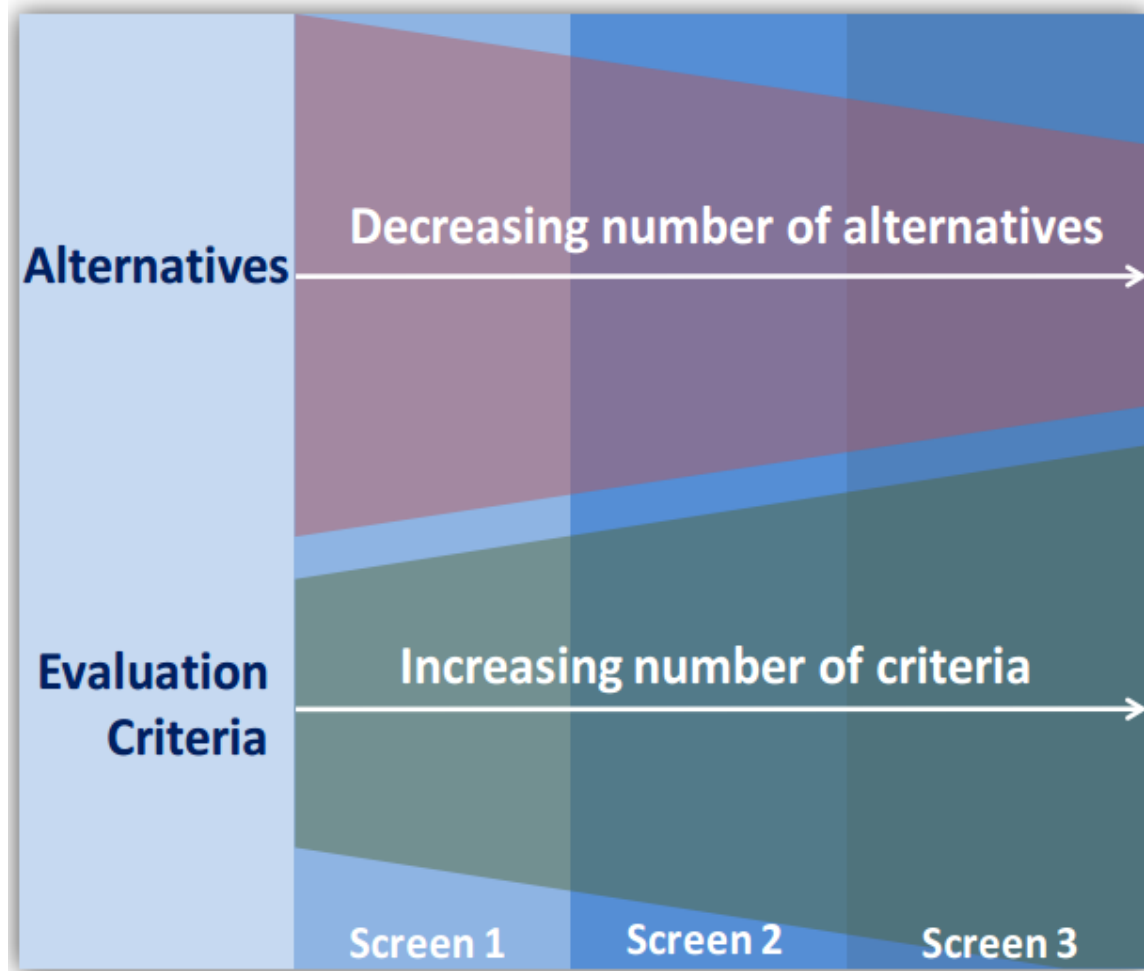
- Site size/shape
- Traffic and site circulation
- Site connectivity
- Environmental factors

## Land Use

- Zoning, policy and community support
- Safety
- Urban design
- Economic development potential

## Implementation

- Land acquisition and existing use
- Site preparation
- Cost



## EVALUATION CRITERIA

## **Level 1 Site Requirements** (include but not limited to):

- **Size:** ½ block, min
- **Bus circulation:** full R/L turn in and out
- **Ped/bike circulation:** near urban greenway
- **Environmental:** no contamination/sensitive resources
- **Policy:** Align with/promote current plans
- **Adjacent uses:** compatible





# Where We Are Where We Might Want to Go



## Colorado Springs

### Downtown Transit Station

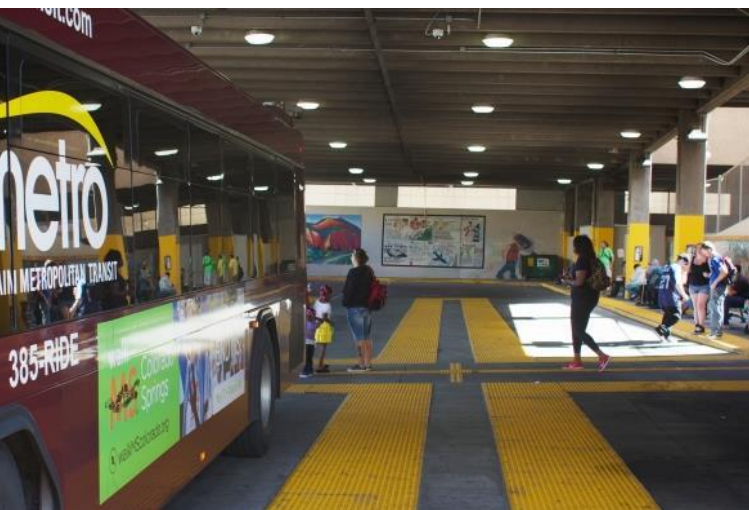
- Built: 1976
- Size: 120' x 200' (0.5 ac)
- Adj Use: office/commercial/civic
  
- Bus area: 'valet' loading
- Some buses on street



## Colorado Springs

### Downtown Transit Station

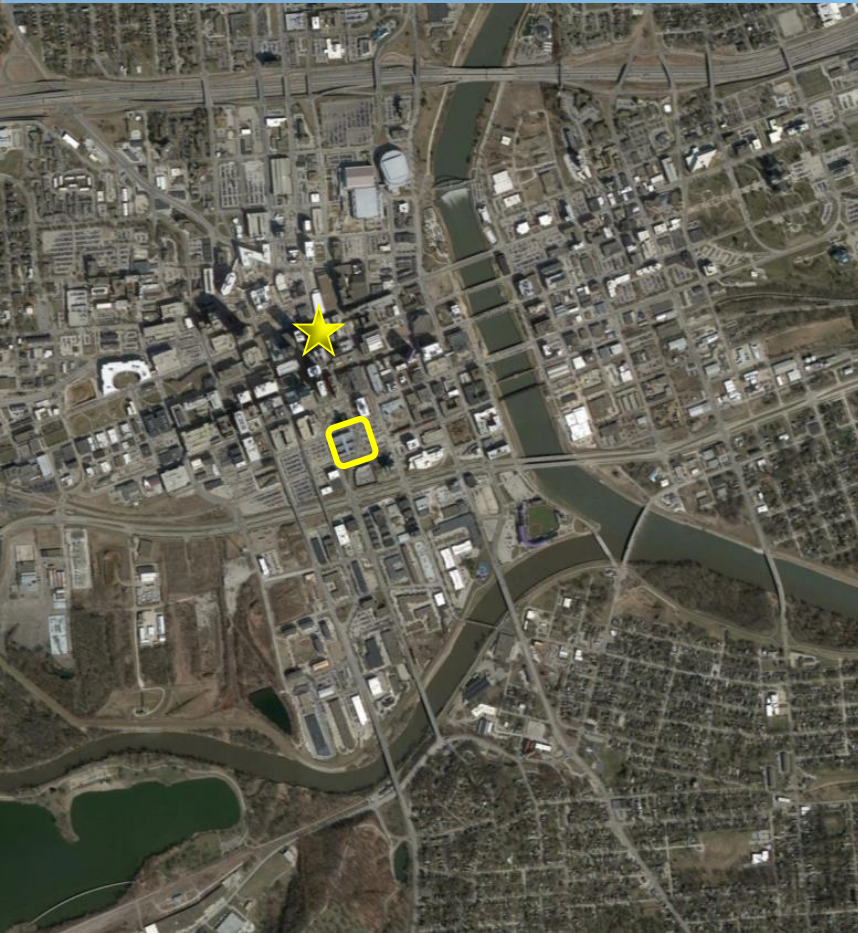
- Built: 1976
- Size: 120' x 200' (0.5 ac)
- Adj Use: office/commercial/civic
  
- Bus area: 'valet' loading
- Some buses on street



# Pull-thru Stations

---

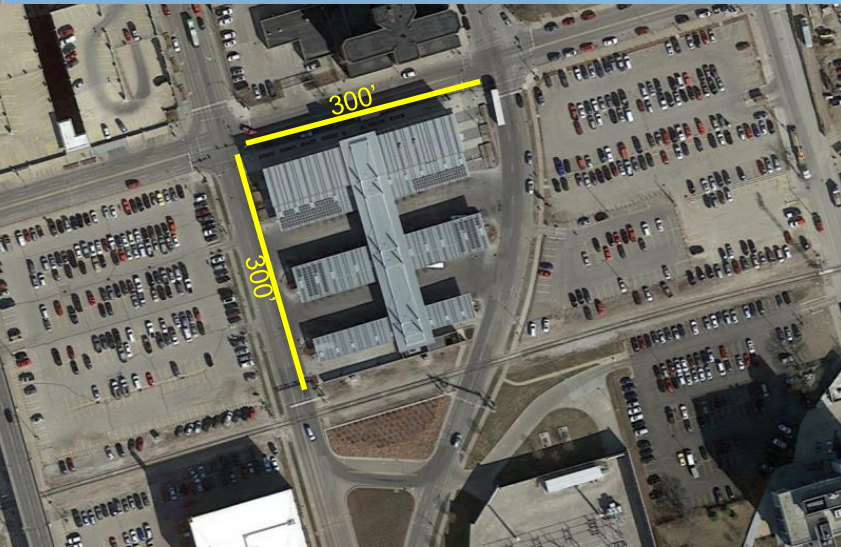
- Des Moines IA 2012
- Indianapolis IN *under construction*



## Des Moines, IA

### DART Central Station

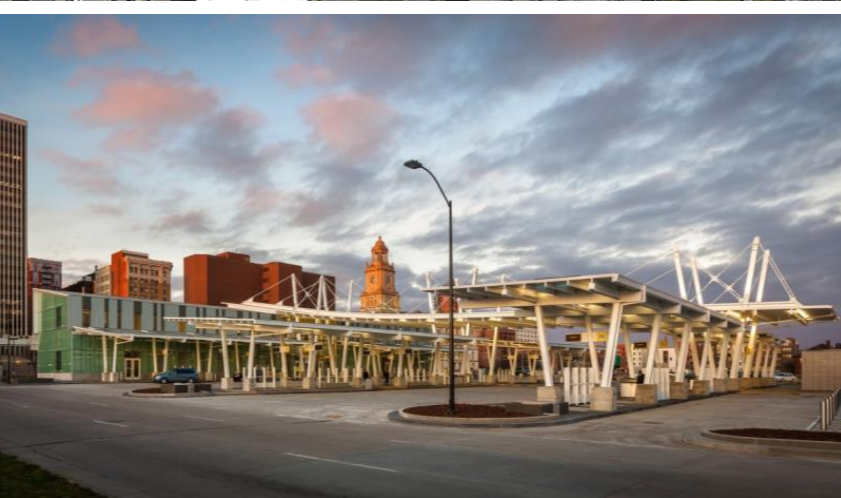
- Built: 2012
- Size: 300' x 300' (1.8 ac)
- Adj Use: surface parking, office

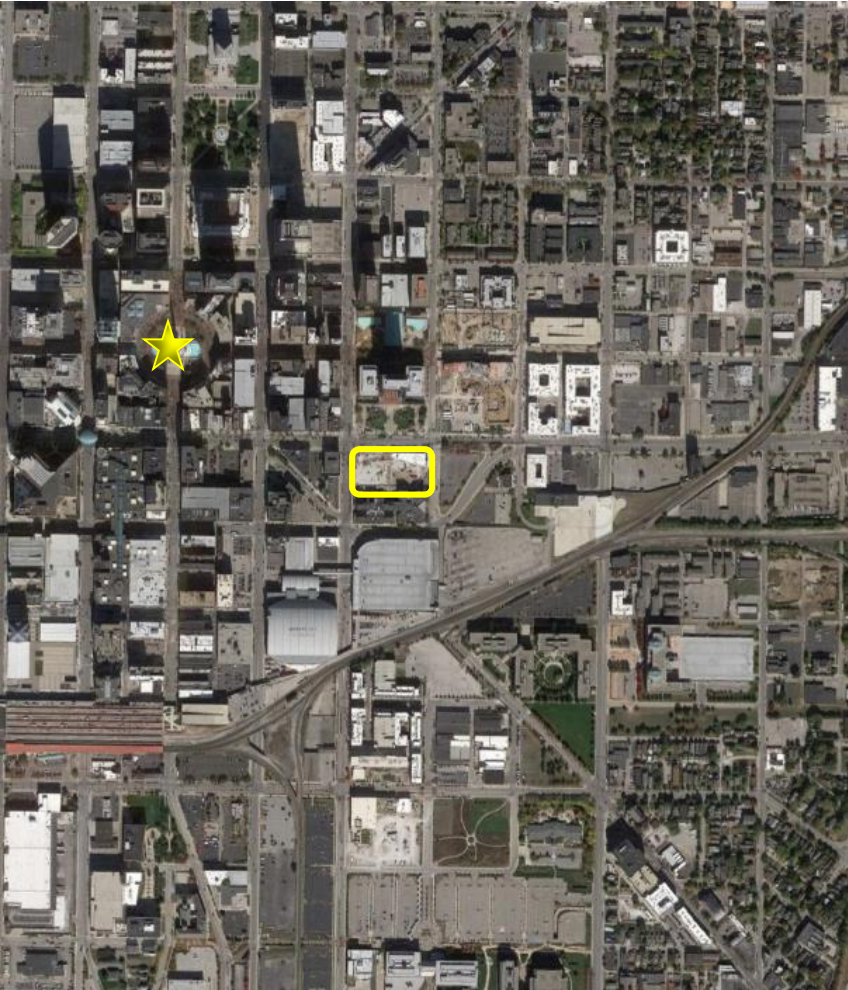


## Des Moines, IA

### DART Central Station

- Built: 2012
- Size: 300' x 300' (1.8 ac)
- Adj Use: surface parking, office
- Site Program
  - Bike hub (secure storage, locker room)
  - Regional bus
  - City bus
  - 15 Bus Bays
- Building Program *2 floors*
  - Waiting room
  - Restrooms
  - Snack areas
  - Customer service
  - Security Center
  - IT room
  - Health room
  - Employee lockers
  - Retail
  - Enclosed office
  - Open office
  - Conference room
  - Multipurpose room





## Indianapolis, IN

### IndyGO Downtown Transit Center

- Built: 2015-2016
- Size: 210' x 400' (1.9 ac)
- Adj Use: surface parking, public plaza, commercial



## Indianapolis, IN

### IndyGO Downtown Transit Center

- Built: 2015-2016
- Size: 210' x 400' (1.9 ac)
- Adj Use: surface parking, public plaza, commercial
- Site Program
  - 19 bus bays
- Building Program
  - LEED certification
  - Waiting room
  - Restrooms
  - Office space





# Loop Station

---

- Boise ID *under construction*



## Boise, ID

### Main Street Station

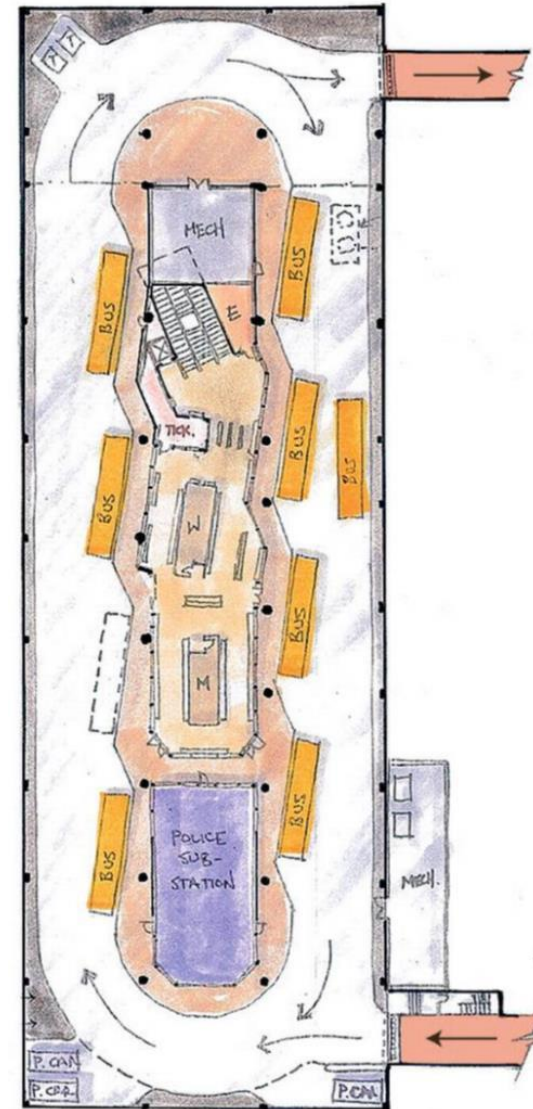
- Built: under construction
- Size: 340' x 150' (1.2 ac)
- Adj Use: public plaza,  
commercial, office

## Boise, ID

Main Street Station  
*underground*



- Built: **under construction**
- Size: 340' x 150' (1.2 ac)
- Adj Use: public plaza, commercial, office
- Site Program
  - 8 bus bays
  - Bus Facilities
  - Underground
- Building Program
  - Police station
  - Ticket booth
  - Restrooms



# Rail-adjacent Stations

---

- Albuquerque NM                      2001 / 2005
- Birmingham AL                      *under construction*

## Albuquerque, NM

### Denver Avenue Station

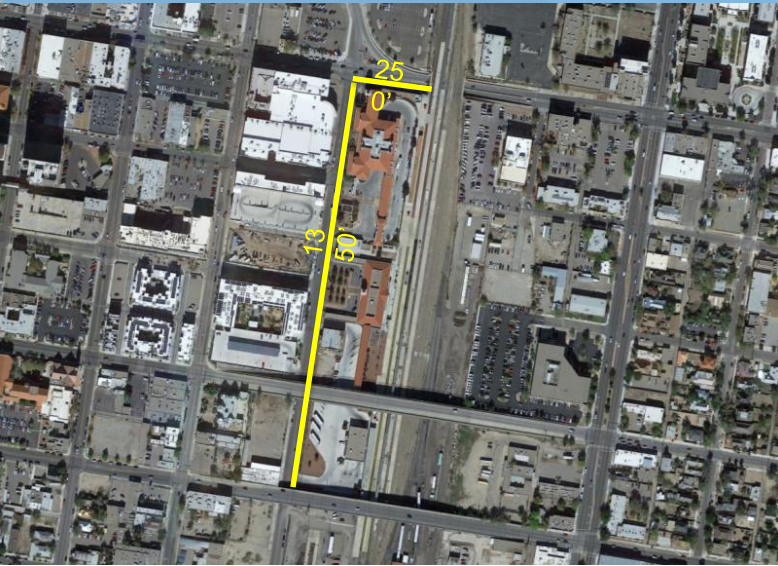
- Built: Early 2000's
- Size: 250' x 1350' (8.0 ac)
- Adj Use: structured parking, residential, commercial



## Albuquerque, NM

### Denver Avenue Station

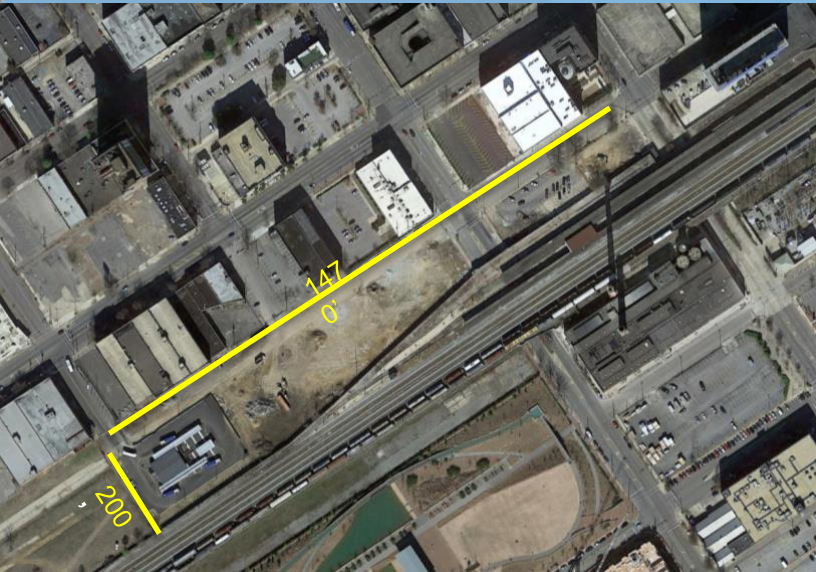
- Built: Early 2001 / 2005
- Size: 250' x 1350' (8.0 ac)
- Adj Use: structured parking, residential, commercial
- Site Program
  - Greyhound services
  - Local bus
  - Rail Runner (commuter rail)
  - Bus maintenance
  - Freight rail storage
- Building Program
  - Ticket booth
  - Cafeteria services
  - Waiting room
  - Restrooms
  - Office space





## Birmingham, AL

MAX Intermodal Center



## Birmingham, AL

### MAX Intermodal Center

- Built: *under construction*
- Size: 200' x 1470' (6.9 ac)
- Adj Use: vacant lots, surface parking

- Site Program

- Amtrak
- Regional bus
- City bus
- Parking

- Building Program

- Lobby
- Restrooms
- Snack areas
- Customer service





# Goals: What Matters Most?

## **Operational Enhancement**

- Efficiency / capacity
- Multimodal access & connections
- Connectivity to activity centers

## **Safety Improvements**

- Reduce conflict:  
buses/vehicles/peds/bikes
- Increase passenger safety

## **Rider Experience**

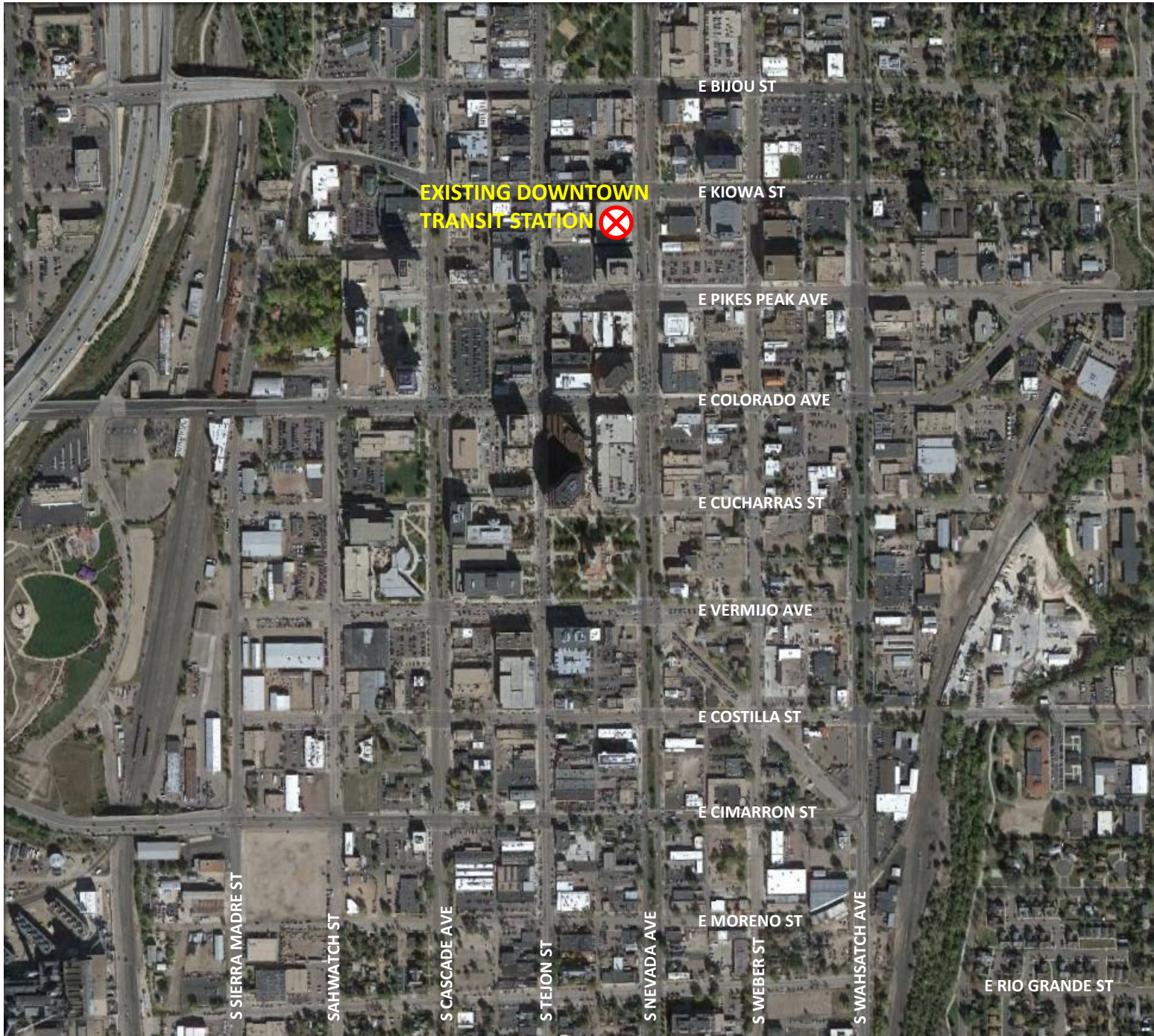
- Passenger amenities
- Transit system access & visibility
- City identity / community asset
- Ridership

## **Economic Revitalization**

- Transit Oriented Development (TOD)
- Long-term downtown redevelopment
- Joint-use on/off-site
- Realistic, cost-effective near-term implementation



# How We Got Here

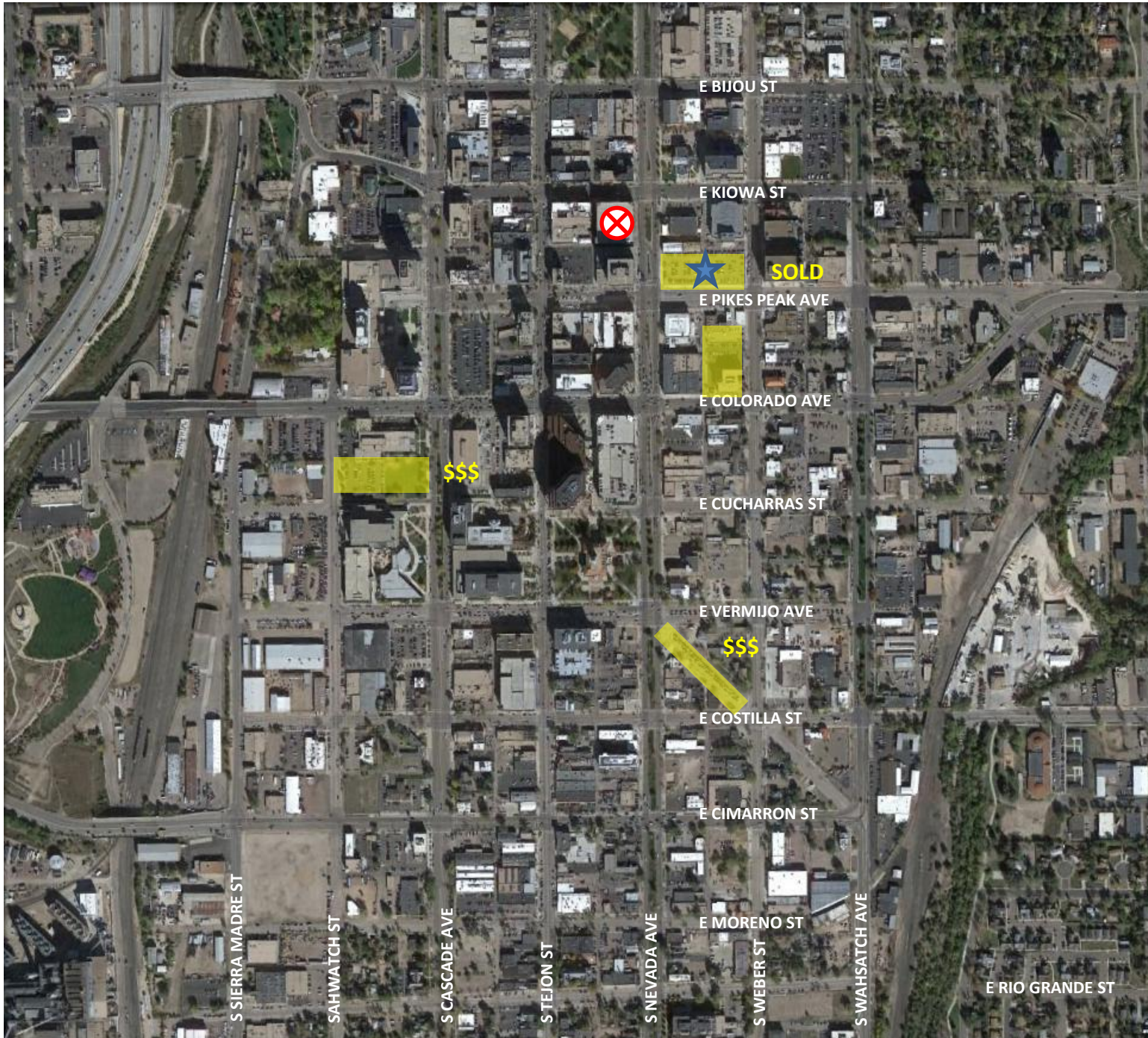


# How We Got Here

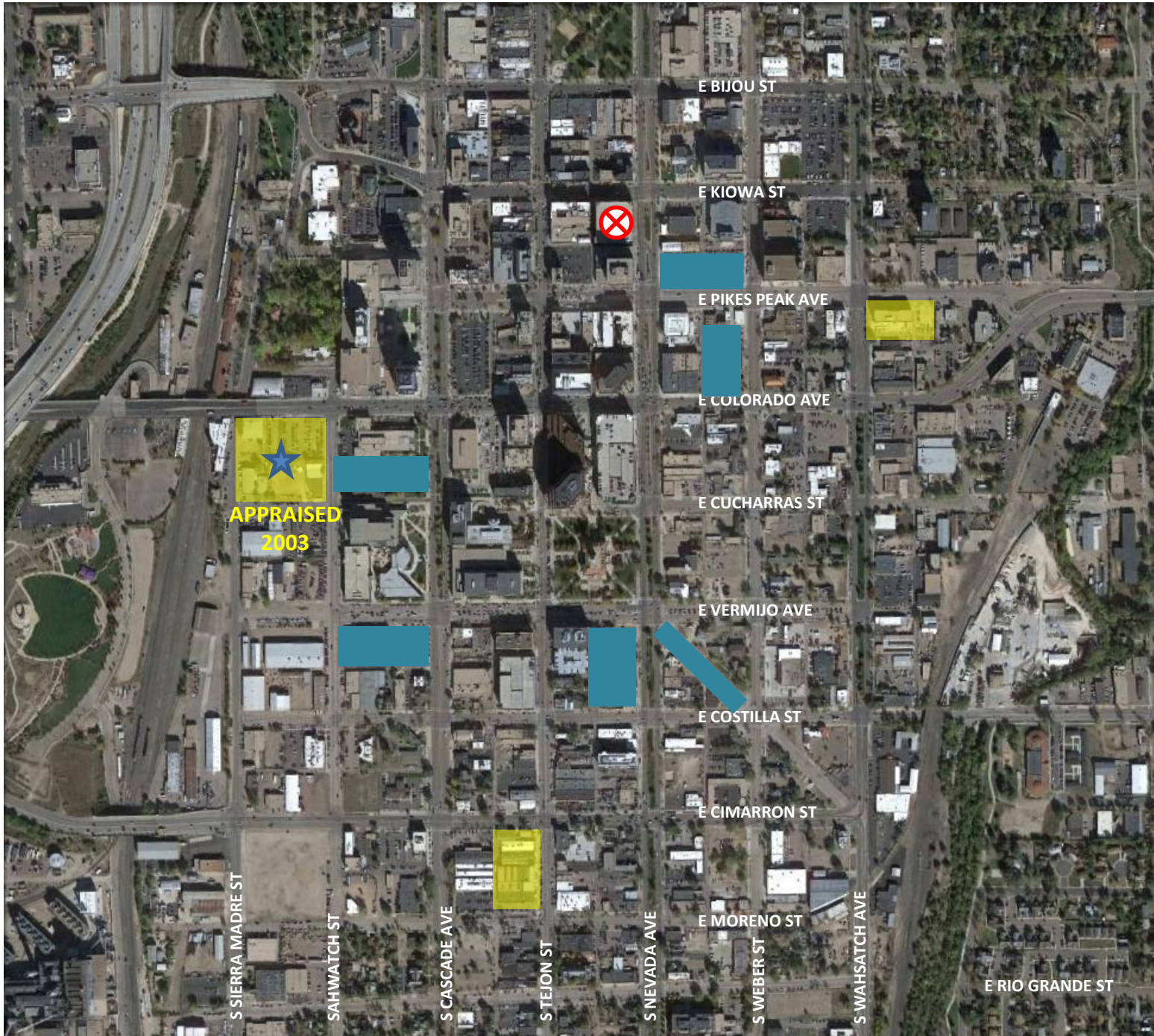
6 studies in 18 years

June 1998

4 sites







## June 1998

4 sites

## August 2000

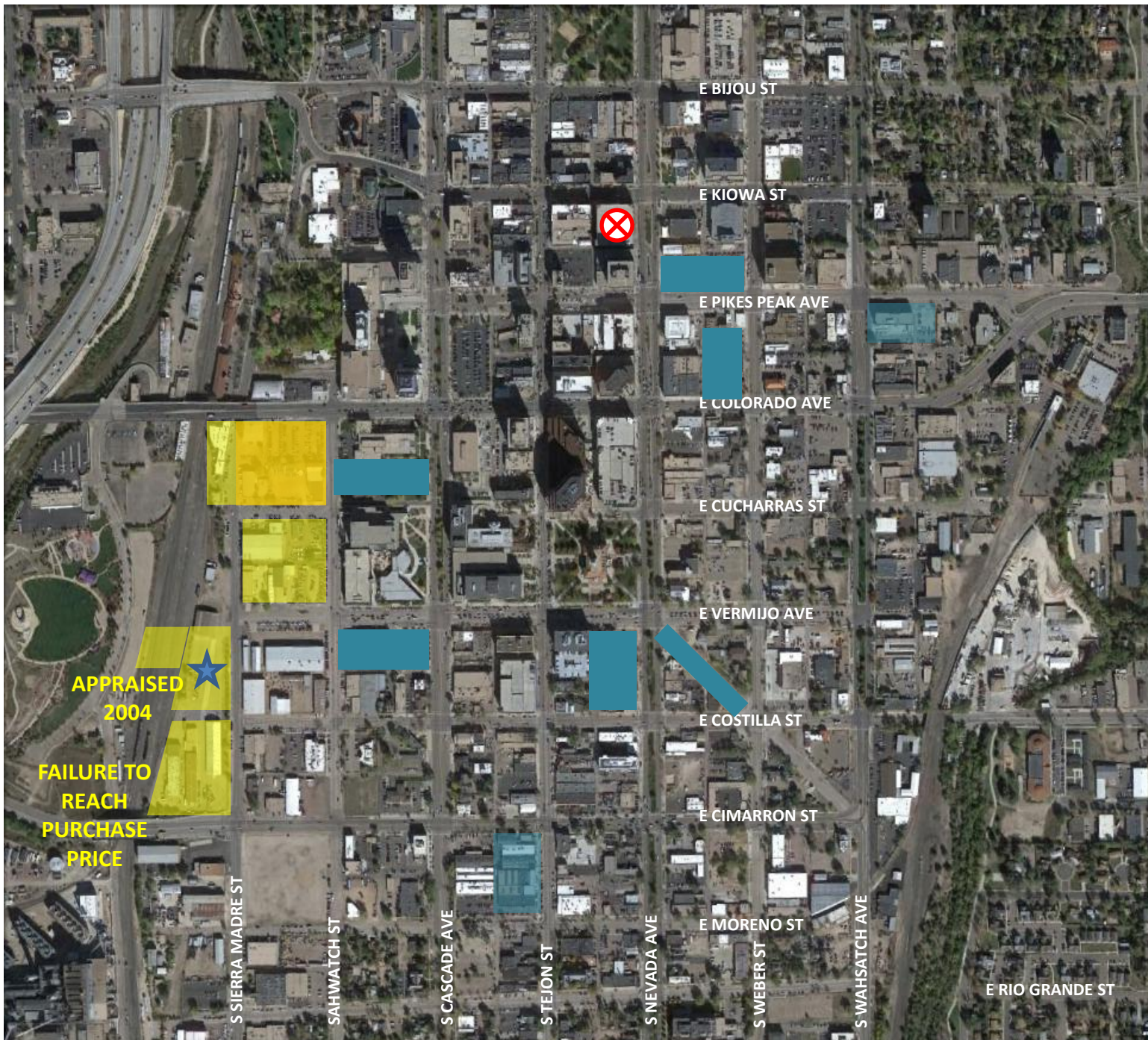
3 sites

- DT core shifts S
- New dev'ment
- Start over (19)

## Oct 2001

3 sites

- Start over (15)



## June 1998

4 sites

## August 2000

3 sites

- DT core shifts S
- New dev'ment
- Start over (19)

## Oct 2001

3 sites

- Start over (15)

## Apr 2003

4 sites

- Evaluated 4 sites 'in proximity' to 2001 site



APPRAISED  
2004

LACK OF  
CMMTY  
CONSENSUS

## June 1998

4 sites

## August 2000

3 sites

- DT core shifts S
- New dev'ment
- Start over (19)

## Oct 2001

3 sites

- Start over (15)

## Apr 2003

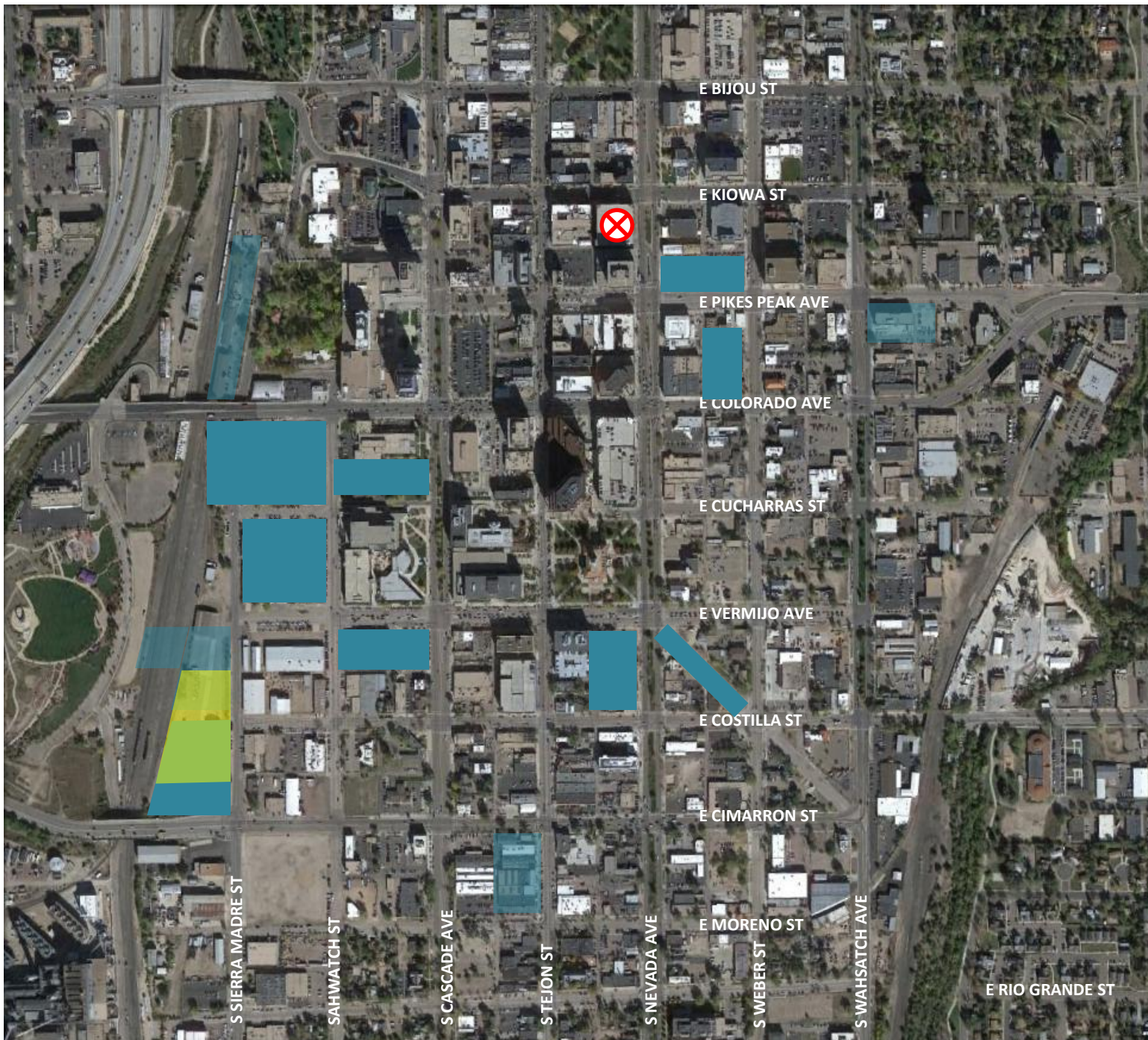
4 sites

- Evaluated 4 sites  
'in proximity' to  
2001 site

## June 2005

1 site





## June 1998

4 sites

## August 2000

3 sites

- DT core shifts S
- New dev'ment
- Start over (19)

## Oct 2001

3 sites

- Start over (15)

## Apr 2003

4 sites

- Evaluated 4 sites 'in proximity' to 2001 site

## June 2005

1 site

## June 2009

1 site

- References and returns to 2001 site and 2003 refinement