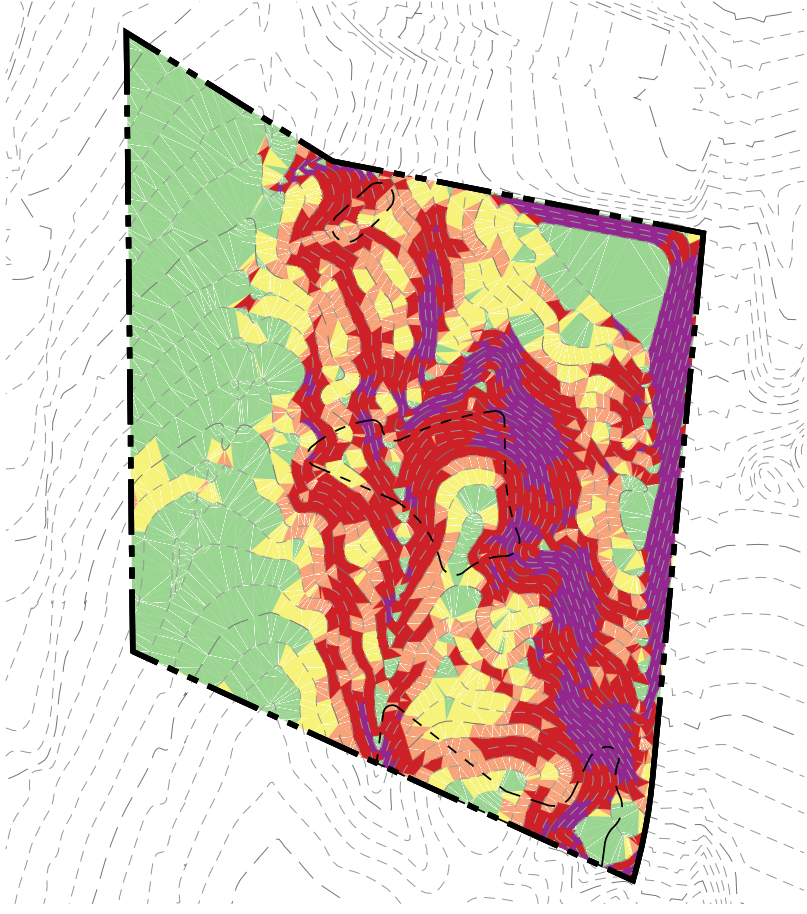


UNIVERSITY BLUFFS FILING NO. 4A

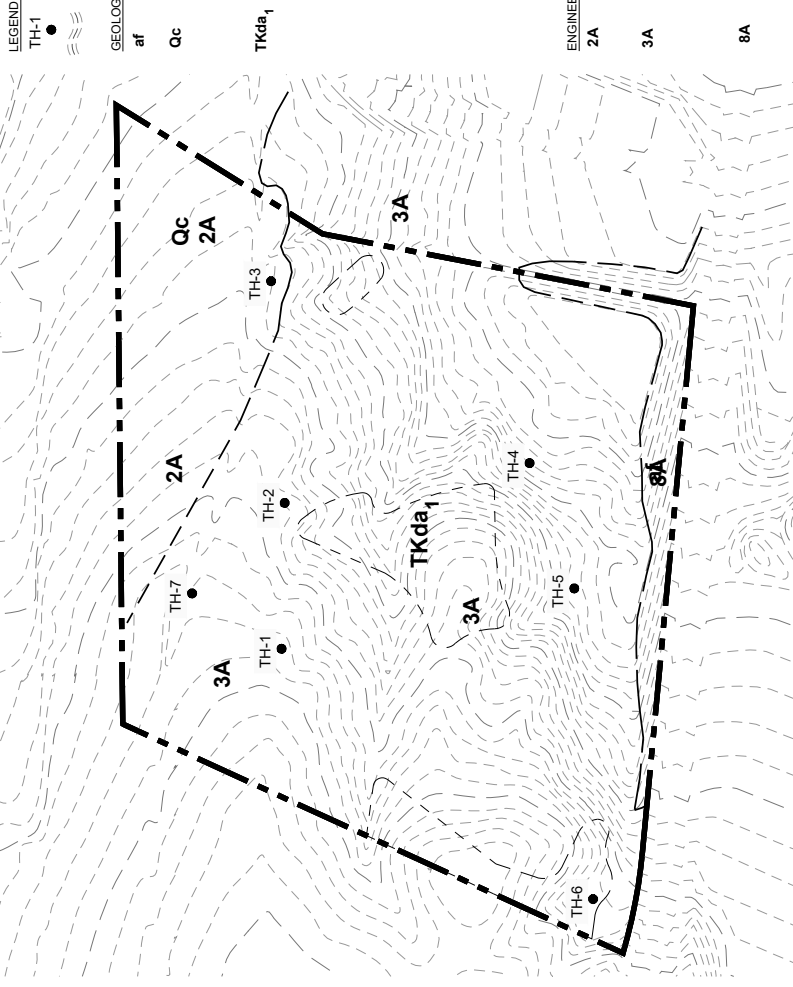
CITY OF COLORADO SPRINGS, COLORADO PUD DEVELOPMENT PLAN - LAND SUITABILITY ANALYSIS



SLOPE ANALYSIS

Slopes Table		
Number	Minimum Slope	Maximum Slope
1	0.00%	8.00%
2	8.00%	12.00%
3	12.00%	15.00%
4	15.00%	25.00%
5	25.00%	9999.00%

--- PROTECTION AREAS
REF. PUD DEVELOPMENT PLAN
GENERAL NOTE 9



GEOLOGY, SOIL, AND NATURAL FEATURES

LEGEND:
TH-1 APPROXIMATE LOCATION OF EXPLORATORY BORING.
EXISTING TOPOGRAPHY

GEOLOGIC UNITS AND (MODIFIERS)
af ARTIFICIAL FILL BELIEVED TO HAVE BEEN CONTROLLED DURING PLACEMENT
Qc COLLUVIUM (HOLOCENE AND LATE PLEISTOCENE) - MOSTLY MATRIX-SUPPORTED, GRAVELLY SAND, CLAYEY SAND, OR SILTY SAND. COARSER GRAINED ON STEEPER SLOPES AND FINER GRAINED ON LOWER SLOPES.
TKda₁ UPPER PART OF THE DAWSON FORMATION (UPPER TRIASSIC) CONSISTING OF THREE TO FIVE THREE INORMAL MEMBERS OF LITHOCLASTIC UNITS. "BASIN-EDGE" DEPOSIT CLOSE TO THE MOUNTAIN FRONT AND AS A BASAL UNIT BELOW FINER GRAINED UNITS. THE UPPER PART OF THE PINEVIEW QUADRANGLE. CLIFF-FORMING, WHITE TO LIGHT-GRAY, CROSS BEDDED OR MASSIVE, VERY COARSE ARKOSIC SANDSTONE, PEBBLE ARKOSE, OR CONGLOMERATE, BEDS OF VERY THICK-BEDDED HOMOGENEOUS CLAYEY SANDSTONE, AND LESSER AMOUNTS OF WHITE TO LIGHT-TAN, CROSS-BEDDED, POORLY-SORTED, MEDIUM TO MEDIUM-GRAINED FELDSPATHIC SANDSTONE. SANDSTONE BEDS ARE THIN TO VERY THIN BEDDED GRAY CLAYSTONE AND SANDY CLAYESTONE OR DARK-BROWN TO BROWNISH-GRAY ORGANIC-RICH SILTSTONE TO COARSE SANDSTONE CONTAINING ABUNDANT PLANT FRAGMENTS.

ENGINEERING UNITS AND (MODIFIERS)
2A STABLE ALLUVIUM, COLLUVIUM AND BEDROCK ON GENTLE TO MODERATE SLOPES (5-15%) EMPHASIS ON SURFACE AND SUBSURFACE DRAINAGE.
3A MODERATE TO STEEP SLOPES (15-24%) INCLUDES SOME OLD ALLUVIAL FANS ALONG MOUNTAIN SLOPES. EMPHASIS ON DRAINAGE, SLOPE BEDROCK STRUCTURE AND DESIGN OF CUTS.
8A AREAS OF CONTROLLED FILL. FILLS ARE GENERALLY STABLE BUT MAY BE SUBJECT TO SETTLEMENT AND EROSION.



N.E.S. Inc.
619 N. Cascade Avenue, Suite 200
Colorado Springs, CO 80903
Tel: 719.471.0073
Fax: 719.471.0267
www.nescolorado.com
© 2012. All Rights Reserved.

PLANNER / LANDSCAPE ARCHITECT

ASSOCIATION WITH

UNIVERSITY BLUFFS FILING NO. 4A

2112 COLLEGIATE DRIVE
COLORADO SPRINGS, CO
80918

DATE: 12-13-2018
PROJECT MGR: A. BARLOW
PREPARED BY: K. MARSHALL

ENTITLEMENT

ISSUE INFO

DATE: 03-05-19
BY: KMM
DESCRIPTION: PER CITY REVIEW COMMENTS

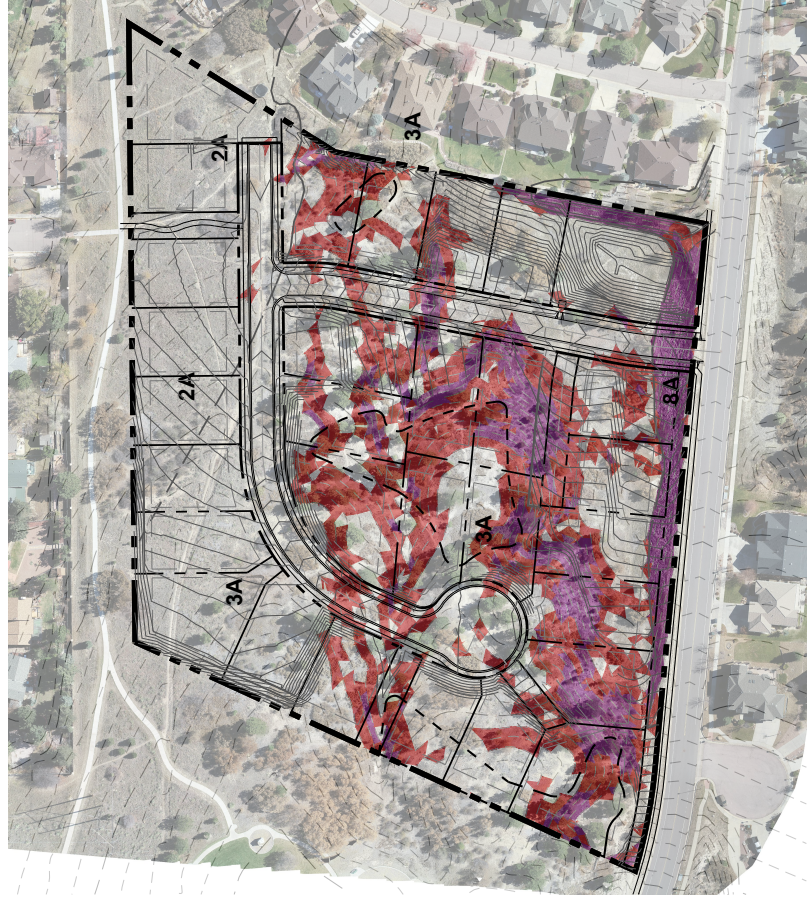
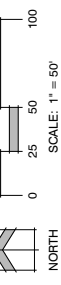
ISSUE / REVISION

LAND SUITABILITY ANALYSIS

SHEET TITLE

1 OF 1

SHEET NUMBER



COMPOSITE ANALYSIS

LEGEND:

	PONDEROSA PINE
	ROCKY MOUNTAIN JUNIPER
	GAMBEL OAK
	MOUNTAIN MAHOGANY, SAGE
	NATIVE GRASSES, YUCCA & CACTUS

--- PROTECTION AREAS
REF. PUD DEVELOPMENT PLAN
GENERAL NOTE 9



VEGETATION

FIGURE 4