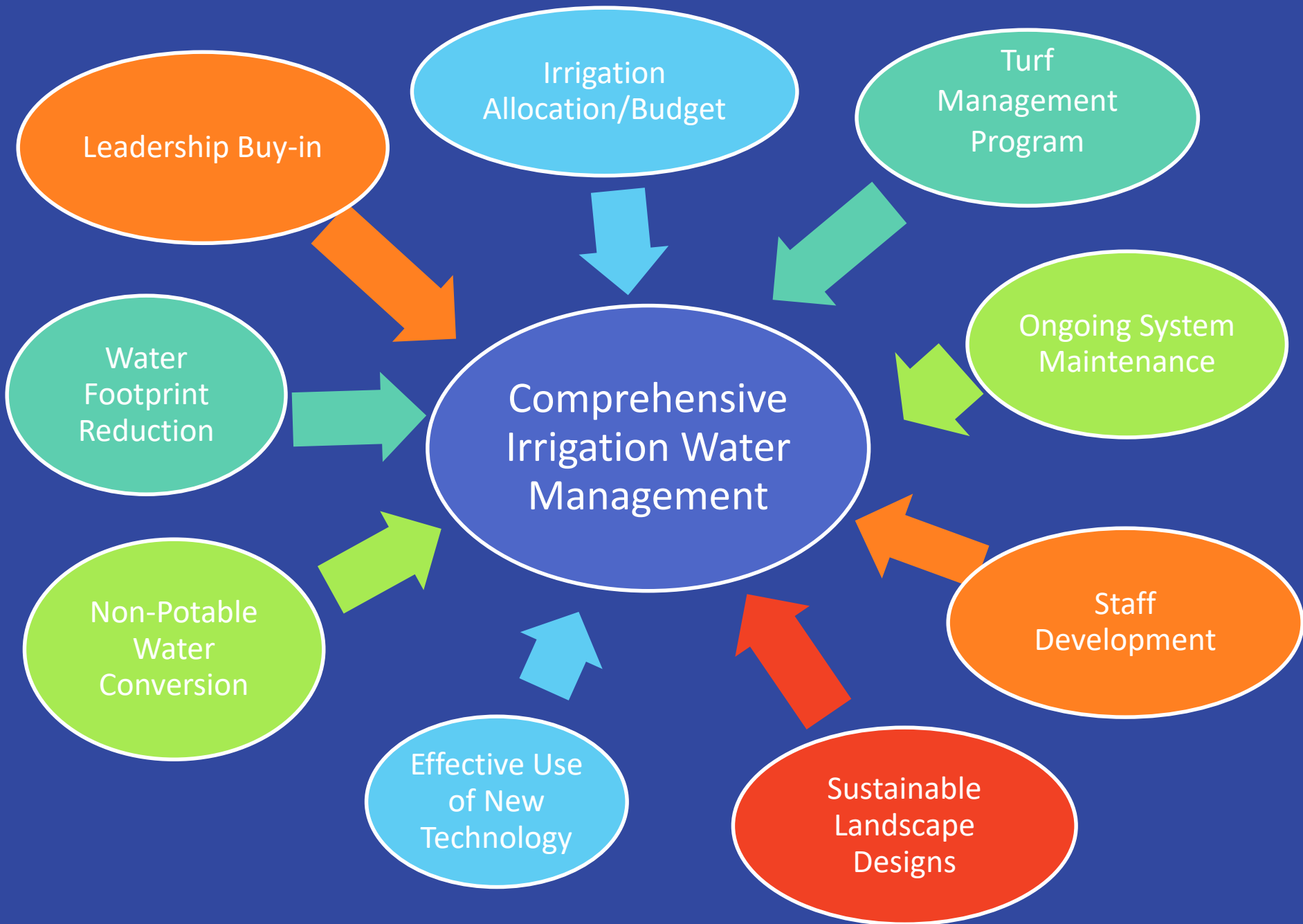


# *Parks, Recreation and Cultural Services Department Water Conservation Program*



sandeeshuman



# Irrigation Allocation



Park	April 2019 Usage (inches)	May 2018 Usage (inches)	June 2019 Usage (inches)	July 2019 Usage (inches)	August 2019 Usage (inches)	September 2019 Usage (inches)	October 2019 Usage (inches)	YTD October Usage (inches)	YTD October % Allocation Used
<b>Adams</b>	1.45	2.37	3.81	4.75	3.96	4.58	1.39	22.32	<b>93%</b>
<b>Audubon</b>	0.00	2.78	4.42	2.03	2.69	4.51	0.70	17.13	<b>71%</b>
<b>Betty Krouse</b>	0.00	2.36	2.89	3.27	4.04	5.60	1.25	19.40	<b>81%</b>
<b>Bonforte</b>	0.33	1.45	3.31	4.31	2.04	3.86	1.06	16.35	<b>68%</b>
<b>Boulder</b>	0.27	1.44	2.42	3.94	4.20	4.97	1.71	18.95	<b>79%</b>
<b>Bristol</b>	0.36	1.27	1.87	2.91	2.64	8.93	3.15	21.14	<b>88%</b>
<b>Frank Waters</b>	0.04	2.43	3.18	4.43	3.48	3.70	1.00	18.27	<b>76%</b>
<b>Franklin</b>	0.00	1.07	2.49	7.43	4.57	7.18	0.00	22.75	<b>95%</b>



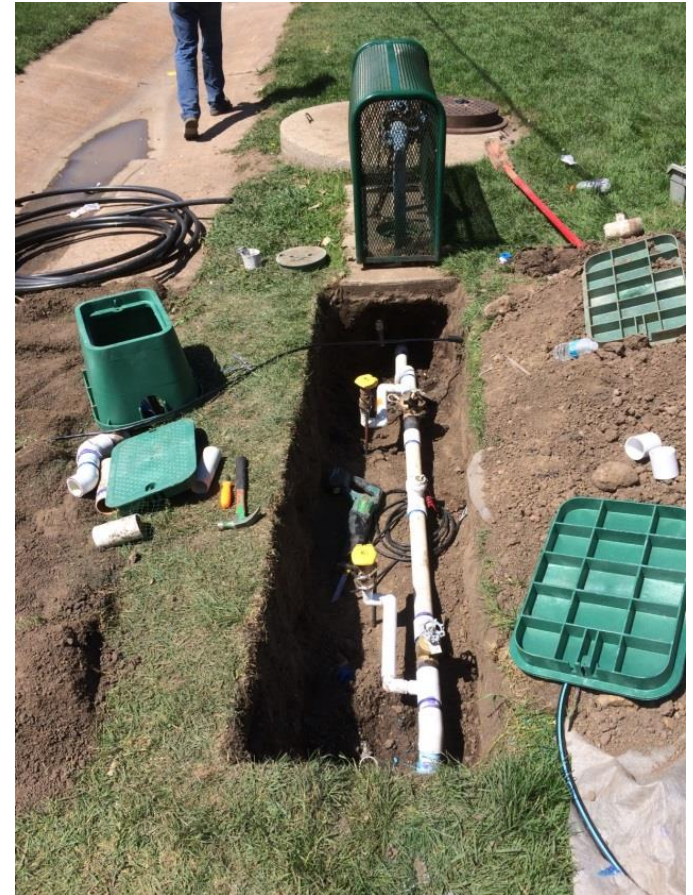
# Technologies to Improve Efficiency of Water Use



COR



# Weather-Based Controllers, Flow Sensors & Master Valves



# Turf Management



- Mowing
- Fertilization
- Irrigation
- Core aerating
- Weed management
- Overseeding



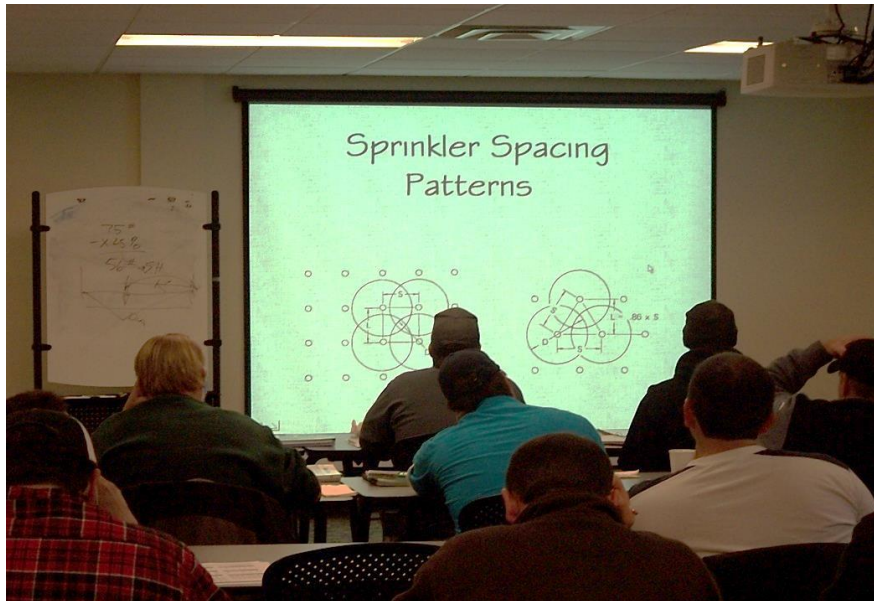


# Staff Training & Certification



## Local and national certifications

- 45 ALCC certified technicians



# Ongoing System Maintenance & Replacements



- \$215K on four new systems in 2019
- \$300K on two new systems in 2020



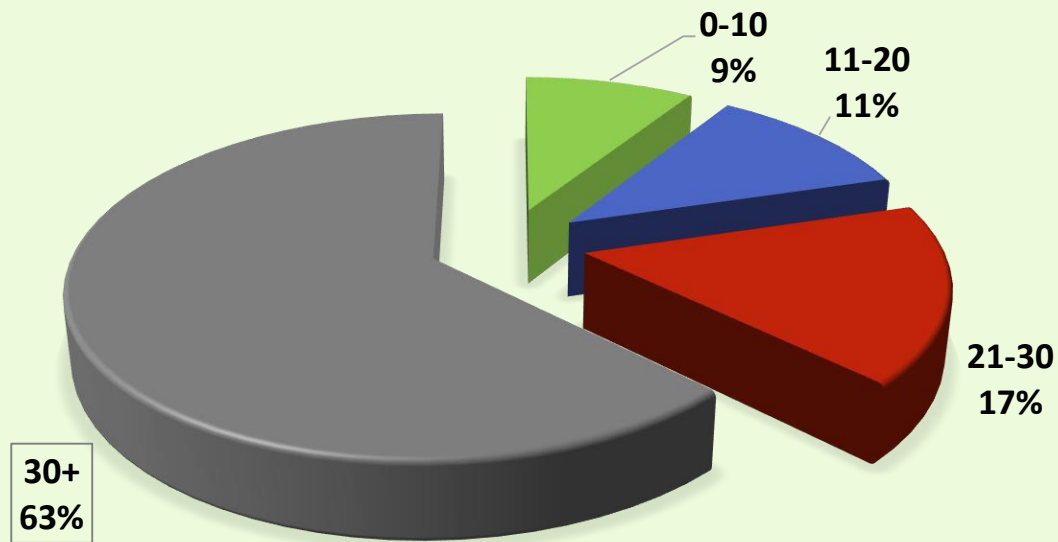
Thorndale Park



# Irrigation System Life Cycle



## AGE OF PARKS IRRIGATION SYSTEMS (YEARS)



# New Park Design and Development



Greater emphasis on sustainable landscape design & irrigation

- Greater focus on efficient irrigation
- Appropriate plants for climate, soils, and water resources

# Non-Potable Water Conversion



Memorial Park Non-Pot Conversion 2012



# Water Footprint Reduction Summary 2012-2020



Focus Area	Acreage
<ul style="list-style-type: none"><li>• Native grass conversions</li></ul>	78
<ul style="list-style-type: none"><li>• Non-pot conversion</li><li>• Synthetic turf</li><li>• Parking strip conversions</li></ul>	43
<b>Total</b>	<b>121</b>



# Water Footprint Reduction



Before



After





# Water Footprint Reduction



A before and after conversion at Wilson Park (2016)



# Water Footprint Reduction



Cottonwood Creek 2B Synthetic Turf Project





# Questions?

