

Gold Hill Mesa

A RENEWED PURPOSE

.....

May 24, 2022



ACTION

- **Dissolution of Metro District 3** - District 3 was dormant since its creation in 2006, and was never activated, never certified a mill levy nor issued debt
- MD 3 has been replaced by a Business Improvement District (BID) and two residential Metropolitan Districts - Gold Hill North Metro District 1 and Gold Hill North Metro District 2
- These new districts are within a new development that is a separate business entity from the original Gold Hill Mesa Metro Districts 1 & 2
- Original Gold Hill Mesa Metro Districts 1 (administrative) & 2 (operations and maintenance) will remain in place to continue serving the current residential development

PURPOSE

- Due to changing market conditions, the site plan has been revised to include a mix of retail, hotel, music park and a variety of housing product
- The Gold Hill Mesa "North" Metro Districts 1 and 2 include residential filings 11, 12 and 13, representing approximately 600 households
- These new districts were created to align with the land plan, and to serve the needs of the various product types and usage (single family detached, multi-family, rental, retail)
- These new districts are already formed, approved, and active

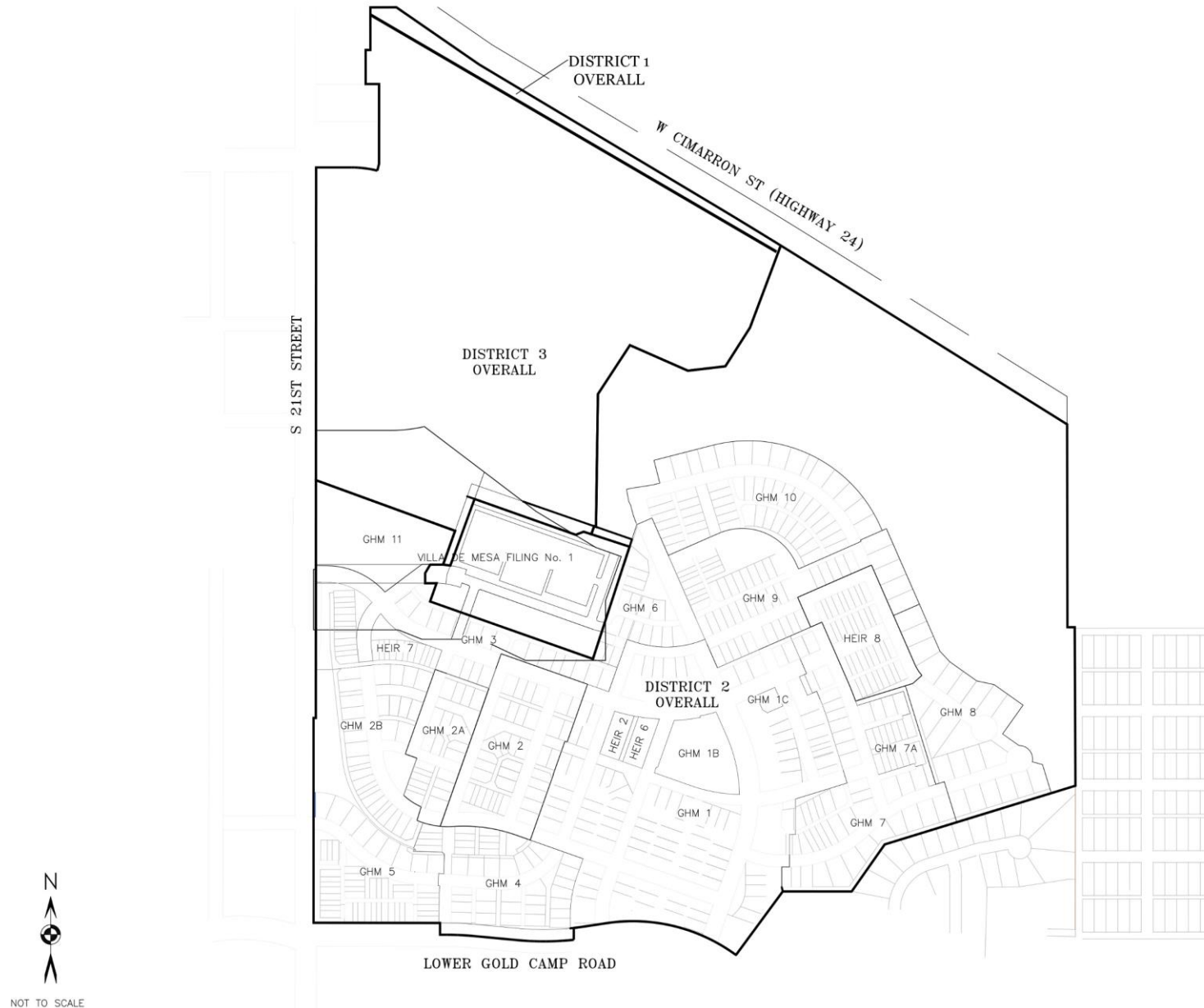


GOLD HILL MESA OVERALL FILINGS


DISTRICT OVERVIEW MAP



Original District Boundaries



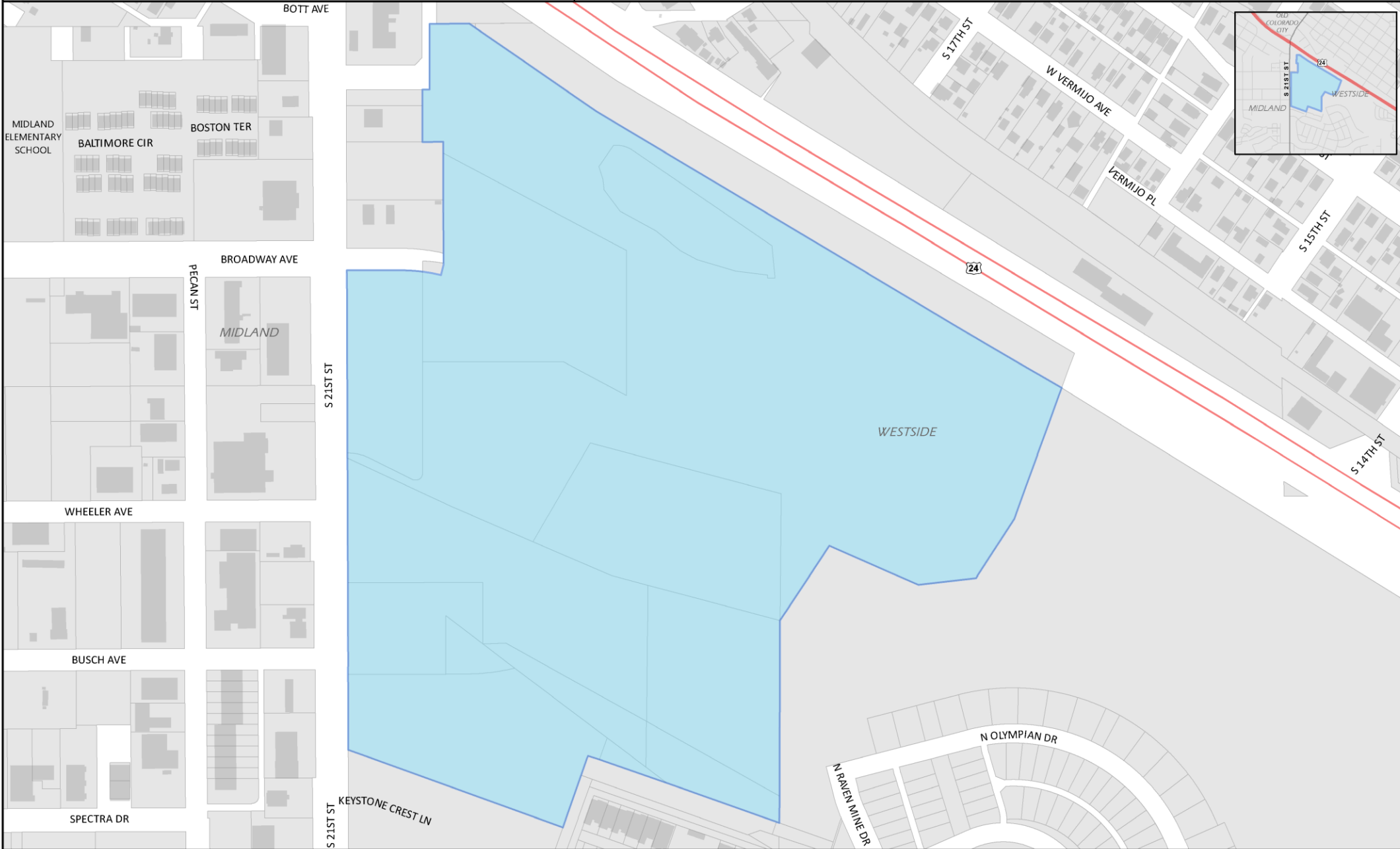
GOLD HILL MESA MD #3

 Tax Boundary

1 inch = 236.47 feet

08/24/2021 EPC Assessor's Office
NAD_1983_StatePlane_Colorado_Central_FIPS_0502_Feet
Projection: Lambert_Conformal_Conic

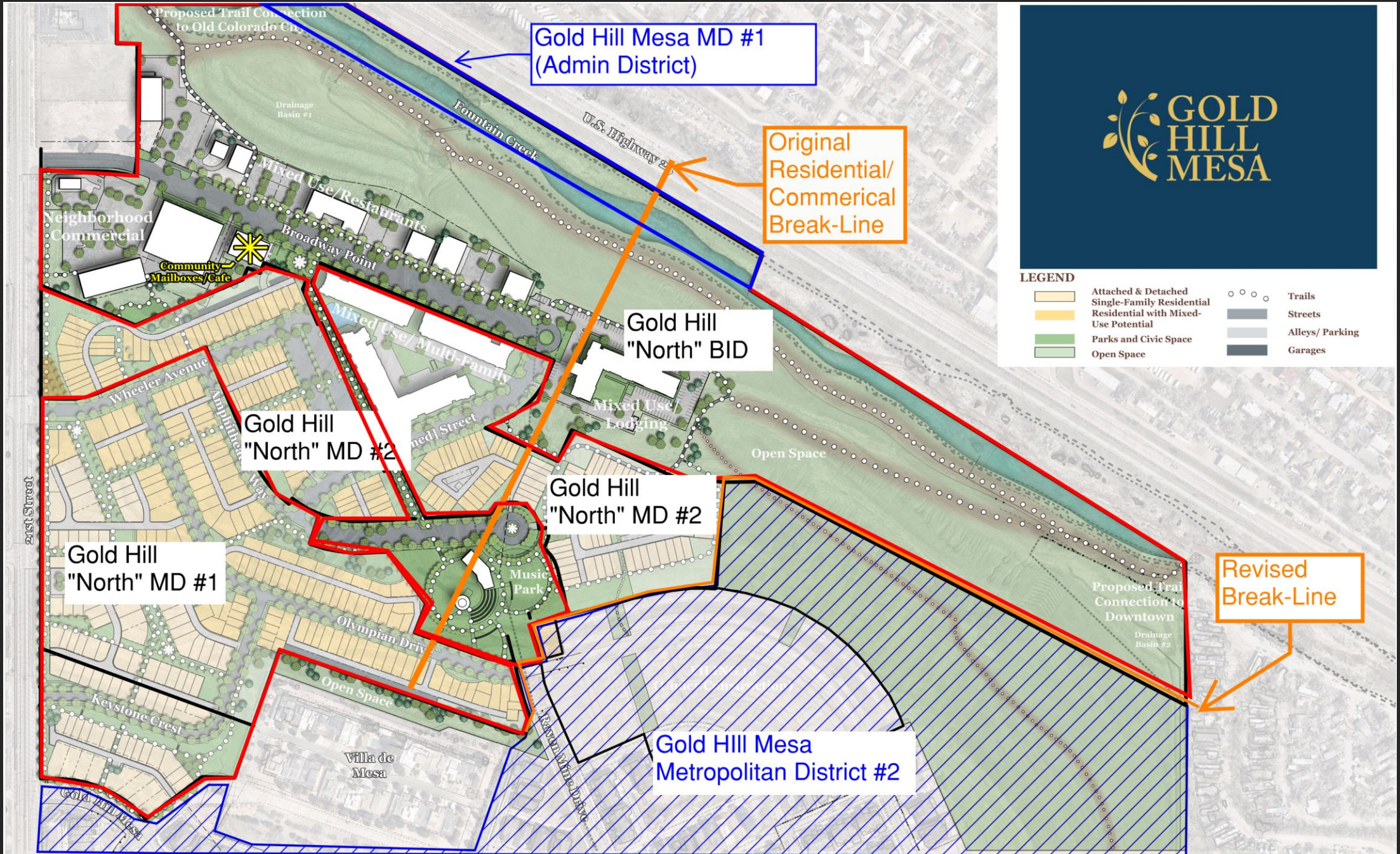
COPYRIGHT 2018 by the Board of County Commissioners, El Paso County, Colorado. All rights reserved. No part of this document or data contained herein may be reproduced, stored in a retrieval system, or distributed without the specific written approval of the Board of County Commissioners, El Paso County, Colorado. The document was prepared from the best data available at the time of printing and is for reference only. El Paso County, Colorado, makes no claim as to the completeness or accuracy of the data contained herein.



NEW DEVELOPMENT AND DISTRICTS - REPLACING METRO DISTRICT 3



REVISED METRO DISTRICT LAYOUT



FROM BLIGHT TO BEAUTY

