

**BROADMOOR
EVENT CENTER**

EXHIBIT HALL
LOT 1, BROADMOOR CAMPUS FILING NO. 2 AND
LOT 1, BROADMOOR CAMPUS FILING NO. 6

DATE: 01/14/2019
PROJECT: HALL
K. WHITFORD

COLORADO
LAND DEVELOPMENT
DIVISION

Land Use Review
Approved
02/19/2019

DEVELOPMENT PLAN
AMENDMENT

DATE:	BY:	DESIGNER:
DATE:	BY:	DESIGNER:
DATE:	BY:	DESIGNER:
DATE:	BY:	DESIGNER:

SITE PLAN

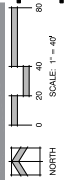
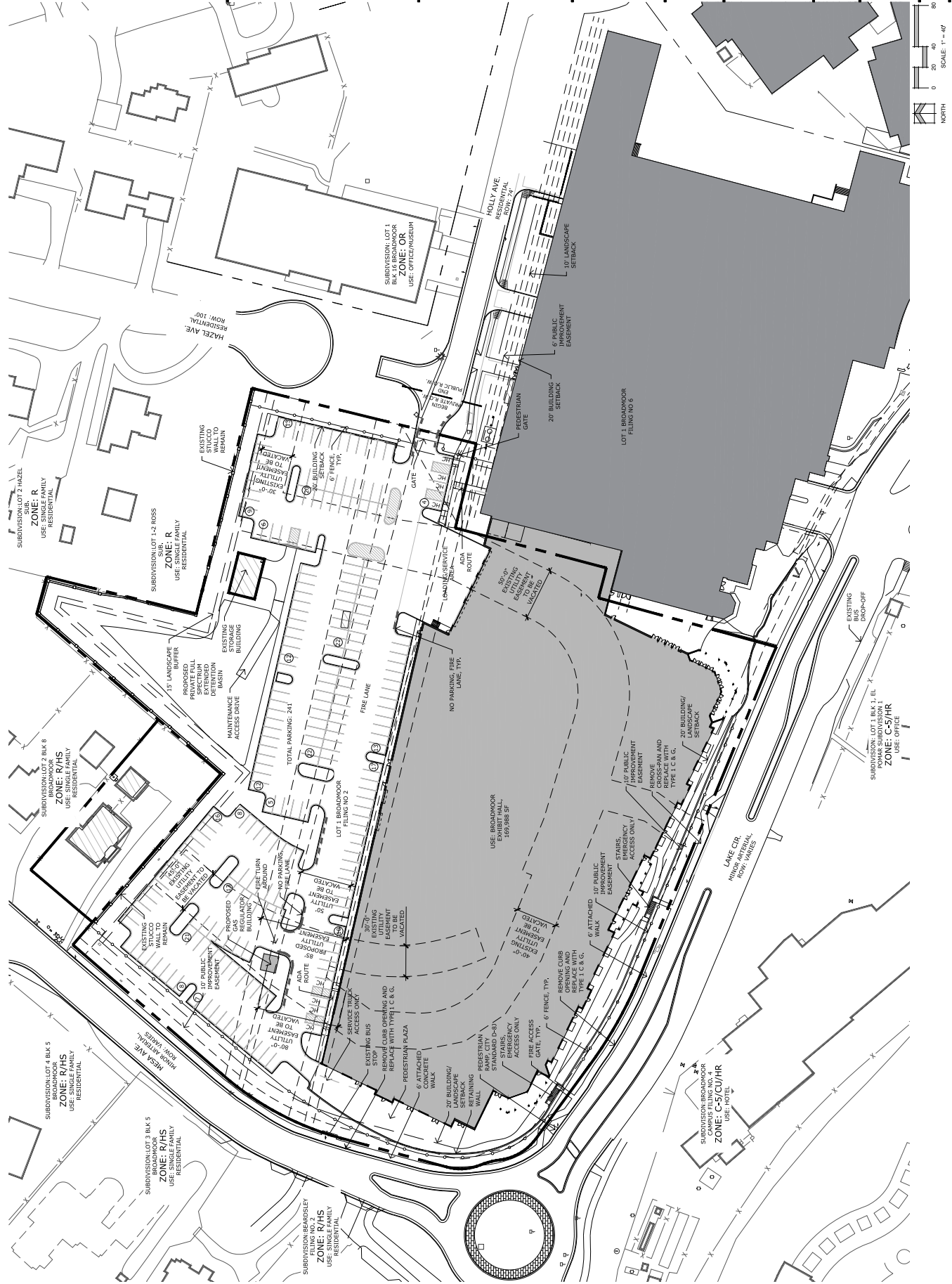
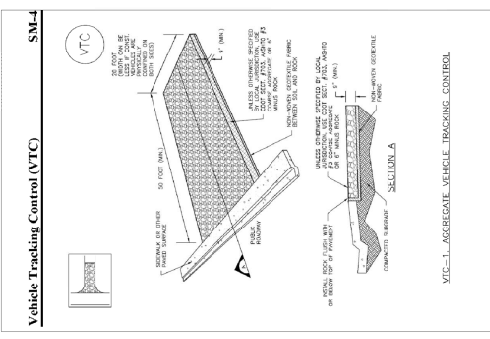


FIGURE 1



SM-4 Vehicle Tracking Control (VTC)

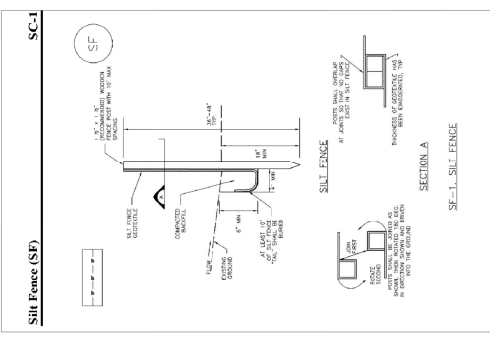
November 2010
Utah State Office and Field Control Division
Utah Storm Drainage Control Manual Volume 3

SM-4 Vehicle Tracking Control (VTC)

GENERAL INSTALLATION INFORMATION:
1. THE CURB SHALL BE CONCRETE OR POLYMER CONCRETE (MINIMUM 4000 PSI COMPRESSIVE STRENGTH) WITH A FINISH OF BROOM OR TYPICAL CURB FINISH.
2. THE CURB SHALL BE 12" HIGH AND 12" WIDE AT THE TOP.
3. THE CURB SHALL BE 12" WIDE AT THE BOTTOM.
4. THE CURB SHALL BE 12" WIDE AT THE TOP AND 12" WIDE AT THE BOTTOM.
5. THE CURB SHALL BE 12" WIDE AT THE TOP AND 12" WIDE AT THE BOTTOM.
6. THE CURB SHALL BE 12" WIDE AT THE TOP AND 12" WIDE AT THE BOTTOM.
7. THE CURB SHALL BE 12" WIDE AT THE TOP AND 12" WIDE AT THE BOTTOM.
8. THE CURB SHALL BE 12" WIDE AT THE TOP AND 12" WIDE AT THE BOTTOM.
9. THE CURB SHALL BE 12" WIDE AT THE TOP AND 12" WIDE AT THE BOTTOM.
10. THE CURB SHALL BE 12" WIDE AT THE TOP AND 12" WIDE AT THE BOTTOM.

VTC

VEHICLE TRACKING CONTROL



SC-1 Silt Fence (SF)

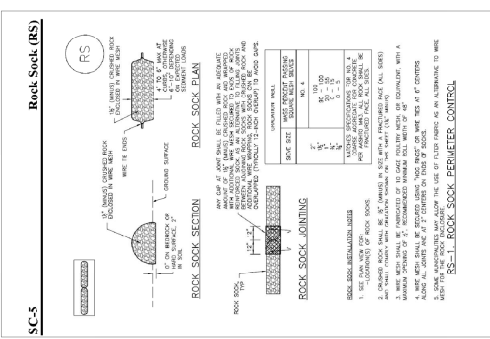
November 2013
Utah State Office and Field Control Division
Utah Storm Drainage Control Manual Volume 3

SC-1 Silt Fence (SF)

GENERAL INSTALLATION INFORMATION:
1. THE SILT FENCE SHALL BE MADE OF 18" WIDE BY 48" HIGH POLYPROPYLENE FABRIC.
2. THE SILT FENCE SHALL BE 12" WIDE AT THE TOP AND 12" WIDE AT THE BOTTOM.
3. THE SILT FENCE SHALL BE 12" WIDE AT THE TOP AND 12" WIDE AT THE BOTTOM.
4. THE SILT FENCE SHALL BE 12" WIDE AT THE TOP AND 12" WIDE AT THE BOTTOM.
5. THE SILT FENCE SHALL BE 12" WIDE AT THE TOP AND 12" WIDE AT THE BOTTOM.
6. THE SILT FENCE SHALL BE 12" WIDE AT THE TOP AND 12" WIDE AT THE BOTTOM.
7. THE SILT FENCE SHALL BE 12" WIDE AT THE TOP AND 12" WIDE AT THE BOTTOM.
8. THE SILT FENCE SHALL BE 12" WIDE AT THE TOP AND 12" WIDE AT THE BOTTOM.
9. THE SILT FENCE SHALL BE 12" WIDE AT THE TOP AND 12" WIDE AT THE BOTTOM.
10. THE SILT FENCE SHALL BE 12" WIDE AT THE TOP AND 12" WIDE AT THE BOTTOM.

SF

SILT FENCE DETAIL



SC-5 Rock Sock (RS)

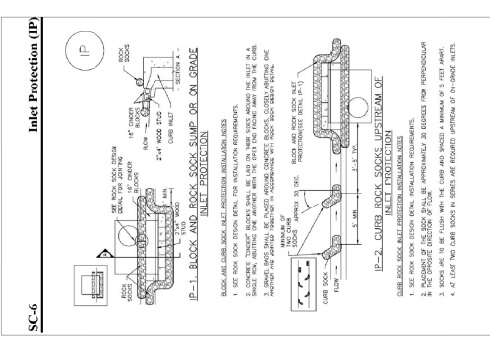
November 2010
Utah State Office and Field Control Division
Utah Storm Drainage Control Manual Volume 3

SC-5 Rock Sock (RS)

GENERAL INSTALLATION INFORMATION:
1. THE ROCK SOCK SHALL BE MADE OF 18" WIDE BY 48" HIGH POLYPROPYLENE FABRIC.
2. THE ROCK SOCK SHALL BE 12" WIDE AT THE TOP AND 12" WIDE AT THE BOTTOM.
3. THE ROCK SOCK SHALL BE 12" WIDE AT THE TOP AND 12" WIDE AT THE BOTTOM.
4. THE ROCK SOCK SHALL BE 12" WIDE AT THE TOP AND 12" WIDE AT THE BOTTOM.
5. THE ROCK SOCK SHALL BE 12" WIDE AT THE TOP AND 12" WIDE AT THE BOTTOM.
6. THE ROCK SOCK SHALL BE 12" WIDE AT THE TOP AND 12" WIDE AT THE BOTTOM.
7. THE ROCK SOCK SHALL BE 12" WIDE AT THE TOP AND 12" WIDE AT THE BOTTOM.
8. THE ROCK SOCK SHALL BE 12" WIDE AT THE TOP AND 12" WIDE AT THE BOTTOM.
9. THE ROCK SOCK SHALL BE 12" WIDE AT THE TOP AND 12" WIDE AT THE BOTTOM.
10. THE ROCK SOCK SHALL BE 12" WIDE AT THE TOP AND 12" WIDE AT THE BOTTOM.

RS

ROCK SOCK DETAIL



SC-6 Inlet Protection (IP)

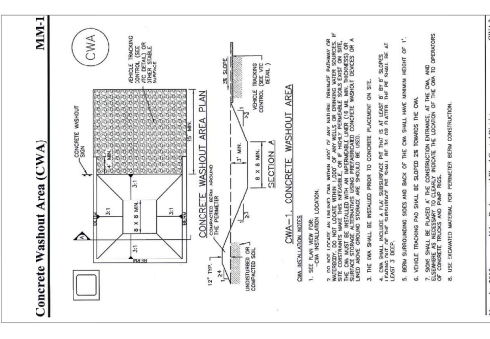
August 2013
Utah State Office and Field Control Division
Utah Storm Drainage Control Manual Volume 3

SC-6 Inlet Protection (IP)

GENERAL INSTALLATION INFORMATION:
1. THE INLET PROTECTION SHALL BE MADE OF 18" WIDE BY 48" HIGH POLYPROPYLENE FABRIC.
2. THE INLET PROTECTION SHALL BE 12" WIDE AT THE TOP AND 12" WIDE AT THE BOTTOM.
3. THE INLET PROTECTION SHALL BE 12" WIDE AT THE TOP AND 12" WIDE AT THE BOTTOM.
4. THE INLET PROTECTION SHALL BE 12" WIDE AT THE TOP AND 12" WIDE AT THE BOTTOM.
5. THE INLET PROTECTION SHALL BE 12" WIDE AT THE TOP AND 12" WIDE AT THE BOTTOM.
6. THE INLET PROTECTION SHALL BE 12" WIDE AT THE TOP AND 12" WIDE AT THE BOTTOM.
7. THE INLET PROTECTION SHALL BE 12" WIDE AT THE TOP AND 12" WIDE AT THE BOTTOM.
8. THE INLET PROTECTION SHALL BE 12" WIDE AT THE TOP AND 12" WIDE AT THE BOTTOM.
9. THE INLET PROTECTION SHALL BE 12" WIDE AT THE TOP AND 12" WIDE AT THE BOTTOM.
10. THE INLET PROTECTION SHALL BE 12" WIDE AT THE TOP AND 12" WIDE AT THE BOTTOM.

IP

CURB SOCK INLET PROTECTION



MM-1 Concrete Washout Area (CWA)

November 2010
Utah State Office and Field Control Division
Utah Storm Drainage Control Manual Volume 3

MM-1 Concrete Washout Area (CWA)

GENERAL INSTALLATION INFORMATION:
1. THE CONCRETE WASHOUT AREA SHALL BE MADE OF 18" WIDE BY 48" HIGH POLYPROPYLENE FABRIC.
2. THE CONCRETE WASHOUT AREA SHALL BE 12" WIDE AT THE TOP AND 12" WIDE AT THE BOTTOM.
3. THE CONCRETE WASHOUT AREA SHALL BE 12" WIDE AT THE TOP AND 12" WIDE AT THE BOTTOM.
4. THE CONCRETE WASHOUT AREA SHALL BE 12" WIDE AT THE TOP AND 12" WIDE AT THE BOTTOM.
5. THE CONCRETE WASHOUT AREA SHALL BE 12" WIDE AT THE TOP AND 12" WIDE AT THE BOTTOM.
6. THE CONCRETE WASHOUT AREA SHALL BE 12" WIDE AT THE TOP AND 12" WIDE AT THE BOTTOM.
7. THE CONCRETE WASHOUT AREA SHALL BE 12" WIDE AT THE TOP AND 12" WIDE AT THE BOTTOM.
8. THE CONCRETE WASHOUT AREA SHALL BE 12" WIDE AT THE TOP AND 12" WIDE AT THE BOTTOM.
9. THE CONCRETE WASHOUT AREA SHALL BE 12" WIDE AT THE TOP AND 12" WIDE AT THE BOTTOM.
10. THE CONCRETE WASHOUT AREA SHALL BE 12" WIDE AT THE TOP AND 12" WIDE AT THE BOTTOM.

CWA

CONCRETE WASHOUT AREA



N.E.S. Inc.
619 N. Cascade Avenue, Suite 200
Colorado Springs, CO 80903
Tel. 719.471.0733
Fax. 719.471.0267
www.nesarch.com

© 2012, All Rights Reserved.



goodies architecture

**BROADMOOR
EVENT CENTER**

EXHIBIT HALL

DATE: 1-15-19
PROJECT: EXHIBIT HALL
DESIGNER: K. WINTERBORN



**DEVELOPMENT
PLAN AMENDMENT**

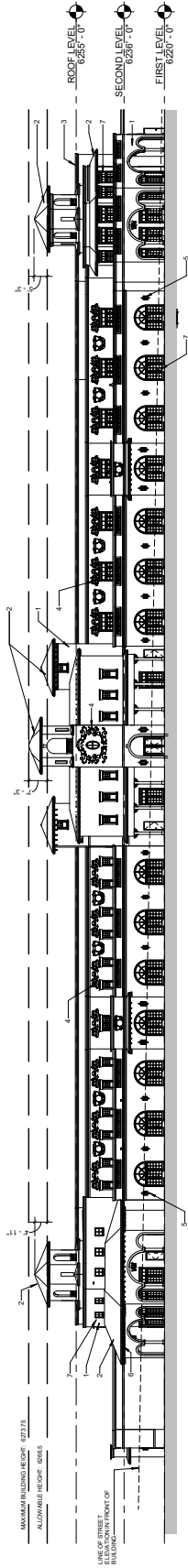
DATE: 02/19/2019
BY: [Signature]

**BUILDING
ELEVATIONS**

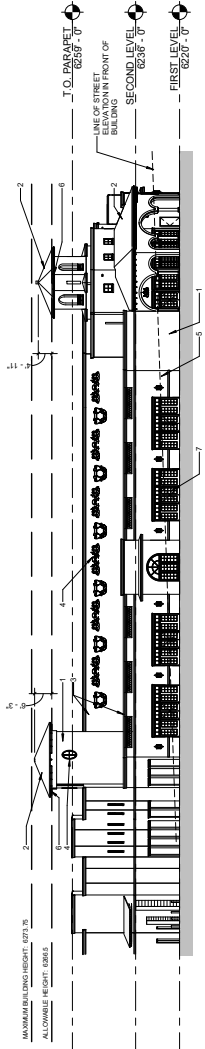
9

9 OF 14

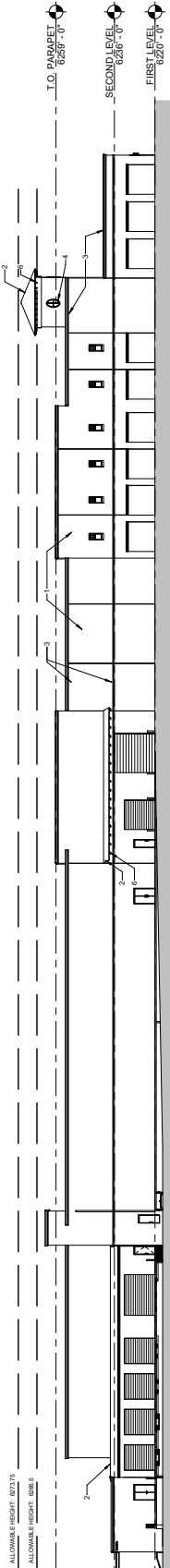
CDD 001630626.000019
AR N.Y. 19-00008
AR R. 19-00017



① SOUTH ELEVATION
3/8" = 1'-0"

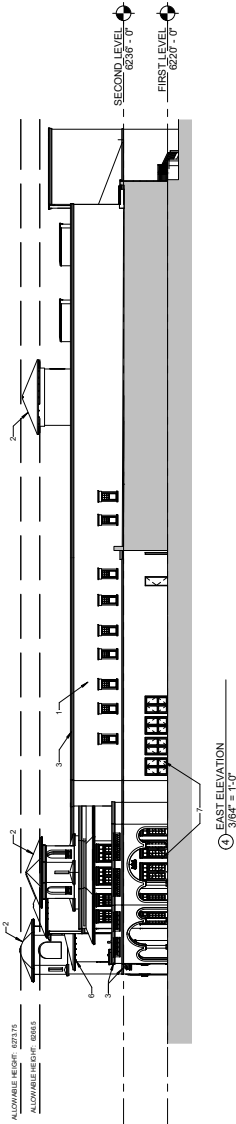


② WEST ELEVATION
3/8" = 1'-0"



③ NORTH ELEVATION
3/8" = 1'-0"

BUILDING HEIGHT NOTES	
AVERAGE GRADE	6220
NORTH WEST CORNER	6220
SOUTH WEST CORNER	6220
SOUTH EAST CORNER	6220
AVERAGE GRADE OF FOUR CORNERS	6216.5
MAXIMUM BUILDING HEIGHT PER CITY CODE - 48 FEET	
ELEVATION OF MAXIMUM BUILDING HEIGHT ON SITE (6216.5	
ETC.) + 6206 FEET HEIGHT PLUS 5 FEET OVER MAXIMUM FOOT PARAPETS,	
HIGHEST BUILDING POINT - 7.25' + 6206.5' = 6213.75' OR 67.25' SEE	
NOTES FOR OVER MAXIMUM HEIGHT:	14.5%



④ EAST ELEVATION
3/8" = 1'-0"

KEY NOTES	
1	STUCCO WALL, PINK COLOR, BROADMOOR BUFF
2	CLAY TILE ROOF, LUGWOOD FRENCH/TALOOKING BLACK AND TO MATCH EXISTING BROADMOOR ROOF
3	WHITE ACCENT HANDSOME TO MATCH BROADMOOR HALL
4	ORNAMENTAL PAINTINGS, PLASTER WORK TO MATCH BROADMOOR HALL
5	DECORATIVE WALL SCHEME LIGHT FINISH TO MATCH EXISTING AT BROADMOOR HALL
6	DISCREETIVE WOOD WOOD WAFER WALK-DOWN BROWN
7	WINDOWS & DOORS - WHITE WITH DOUBLE GLAZING TO MATCH BROADMOOR HALL

NOTE: ALL FINISHES TO MATCH COLOR SCHEME OF EXISTING BROADMOOR CAMPUS BUILDINGS

FIGURE 1



NIES, Inc.
619 N. Cascade Avenue, Suite 200
Colorado Springs, CO 80903
Tel. 719.471.0073
Fax 719.471.0067
www.niesland.com

**BROADMOOR
EVENT CENTER**

EXHIBIT HALL



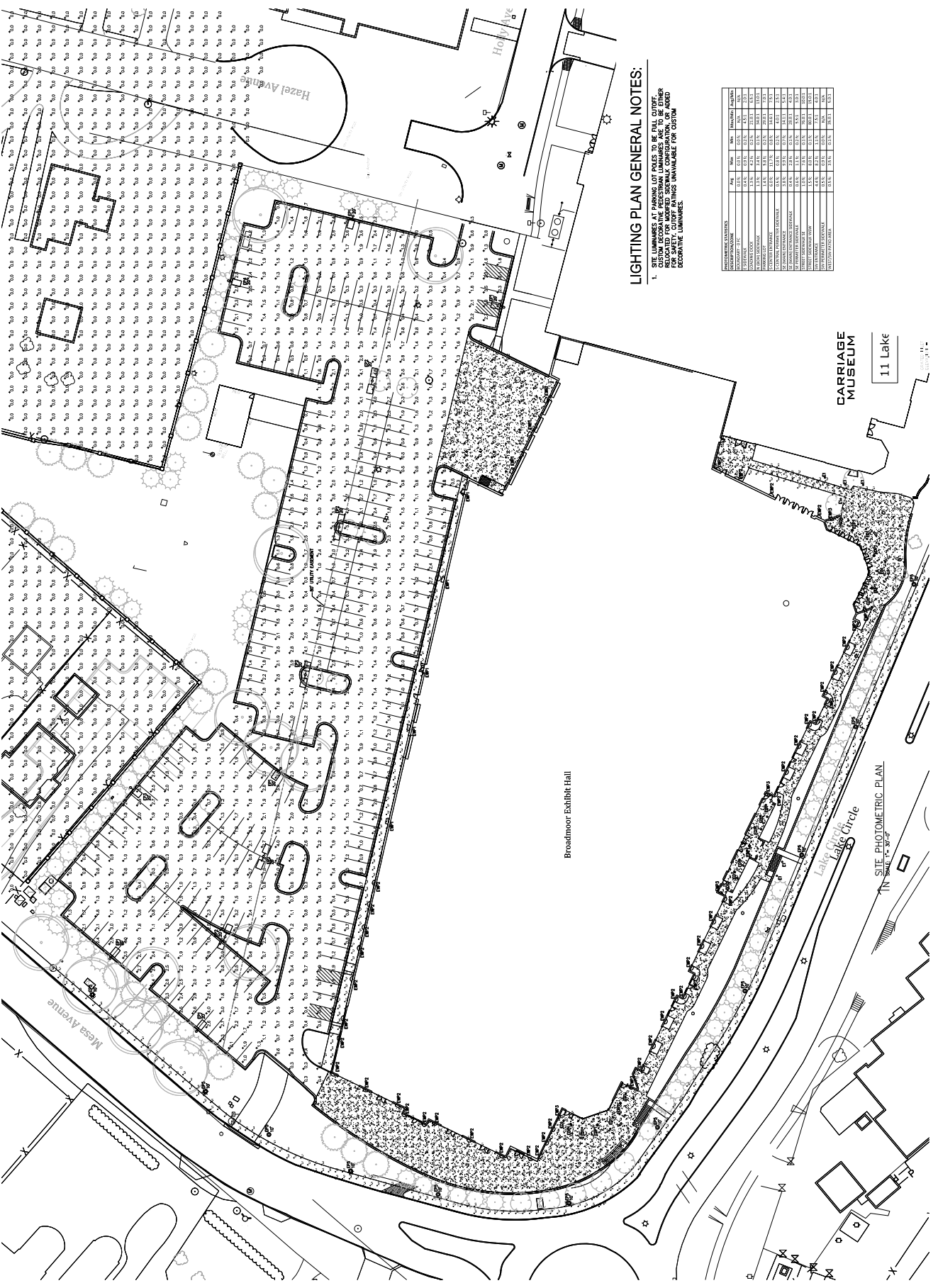
DEVELOPMENT PLAN
AMENDMENT

DATE:	1-19-19
PROJECT:	BROADMOOR
SCALE:	AS SHOWN
BY:	DESIGNED
DATE:	1-19-19
PROJECT:	BROADMOOR
SCALE:	AS SHOWN
BY:	DESIGNED

SITE PHOTOMETRIC PLAN

E2
11 of 14

CPC NO. 15-00001080119
DATE: 01/19/2019
APP. NO. 15-0000119
APP. R. 15-00017



LIGHTING PLAN GENERAL NOTES:

1. SITE LUMINAIES AT PARKING LOT POLES TO BE FULL CUT-OFF. RELOCATED FOR IMPROVED SIGNALING COORDINATION OF ADJACENT DECORATIVE LUMINAIES.

ROW	TYPE	HEIGHT	SPACING	WATTAGE	BEAM ANGLE	FOOT COUNCILS
1	STREET LIGHT	15.0	100.0	150.0	120.0	1.5
2	PARKING LOT LIGHT	12.0	50.0	100.0	120.0	1.5
3	LANDSCAPE LIGHT	8.0	20.0	50.0	120.0	1.5
4	WALKWAY LIGHT	6.0	10.0	25.0	120.0	1.5
5	PLANTER LIGHT	4.0	5.0	10.0	120.0	1.5
6	WATER FEATURE LIGHT	8.0	20.0	50.0	120.0	1.5
7	SCULPTURE LIGHT	10.0	25.0	75.0	120.0	1.5
8	ART LIGHT	12.0	30.0	100.0	120.0	1.5
9	WATER FEATURE LIGHT	8.0	20.0	50.0	120.0	1.5
10	SCULPTURE LIGHT	10.0	25.0	75.0	120.0	1.5
11	ART LIGHT	12.0	30.0	100.0	120.0	1.5
12	WATER FEATURE LIGHT	8.0	20.0	50.0	120.0	1.5
13	SCULPTURE LIGHT	10.0	25.0	75.0	120.0	1.5
14	ART LIGHT	12.0	30.0	100.0	120.0	1.5
15	WATER FEATURE LIGHT	8.0	20.0	50.0	120.0	1.5
16	SCULPTURE LIGHT	10.0	25.0	75.0	120.0	1.5
17	ART LIGHT	12.0	30.0	100.0	120.0	1.5
18	WATER FEATURE LIGHT	8.0	20.0	50.0	120.0	1.5
19	SCULPTURE LIGHT	10.0	25.0	75.0	120.0	1.5
20	ART LIGHT	12.0	30.0	100.0	120.0	1.5

FIGURE 1

