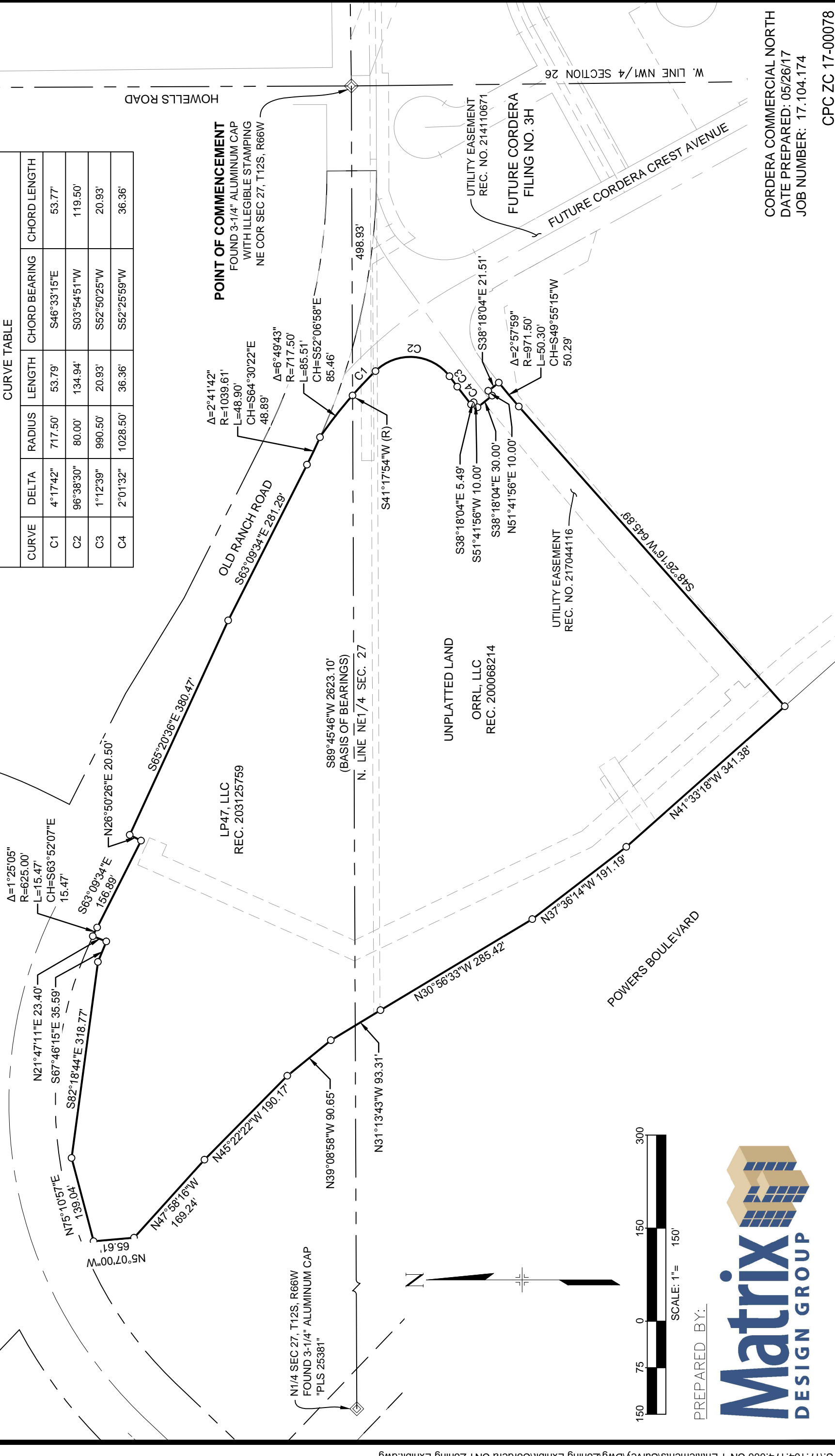


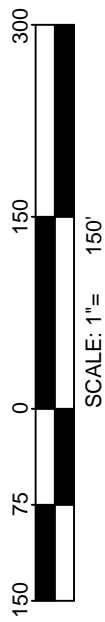
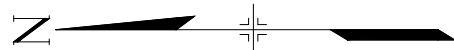
CORDERA COMMERCIAL NORTH ZONE EXHIBIT B

CURVE TABLE					
CURVE	DELTA	RADIUS	LENGTH	CHORD BEARING	CHORD LENGTH
C1	4°17'42"	717.50'	53.79'	S46°33'15"E	53.77'
C2	96°38'30"	80.00'	134.94'	S03°54'51"W	119.50'
C3	1°12'39"	990.50'	20.93'	S52°50'25"W	20.93'
C4	2°01'32"	1028.50'	36.36'	S52°25'59"W	36.36'



POINT OF COMMENCEMENT
 FOUND 3-1/4" ALUMINUM CAP
 WITH ILLEGIBLE STAMPING
 NE COR SEC 27, T12S, R66W

N1/4 SEC 27, T12S, R66W
 FOUND 3-1/4" ALUMINUM CAP
 "PLS 25381"



PREPARED BY:



CORDERA COMMERCIAL NORTH
 DATE PREPARED: 05/26/17
 JOB NUMBER: 17.104.174
 CPC ZC 17-00078

FIGURE 5 - Cordera Commercial North