

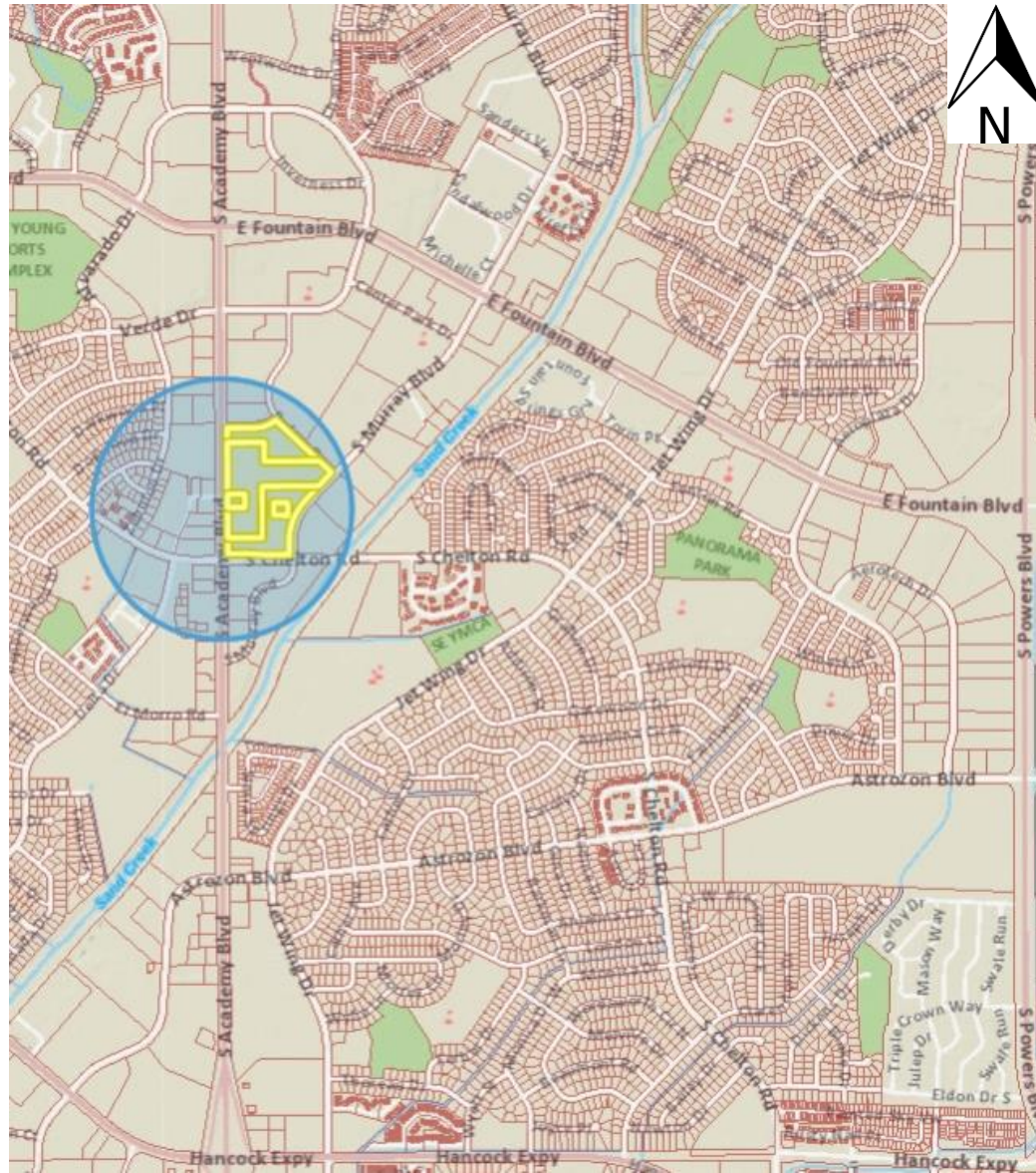
# ACADEMY BLVD RECONSTRUCTION – FOUNTAIN TO JET WING

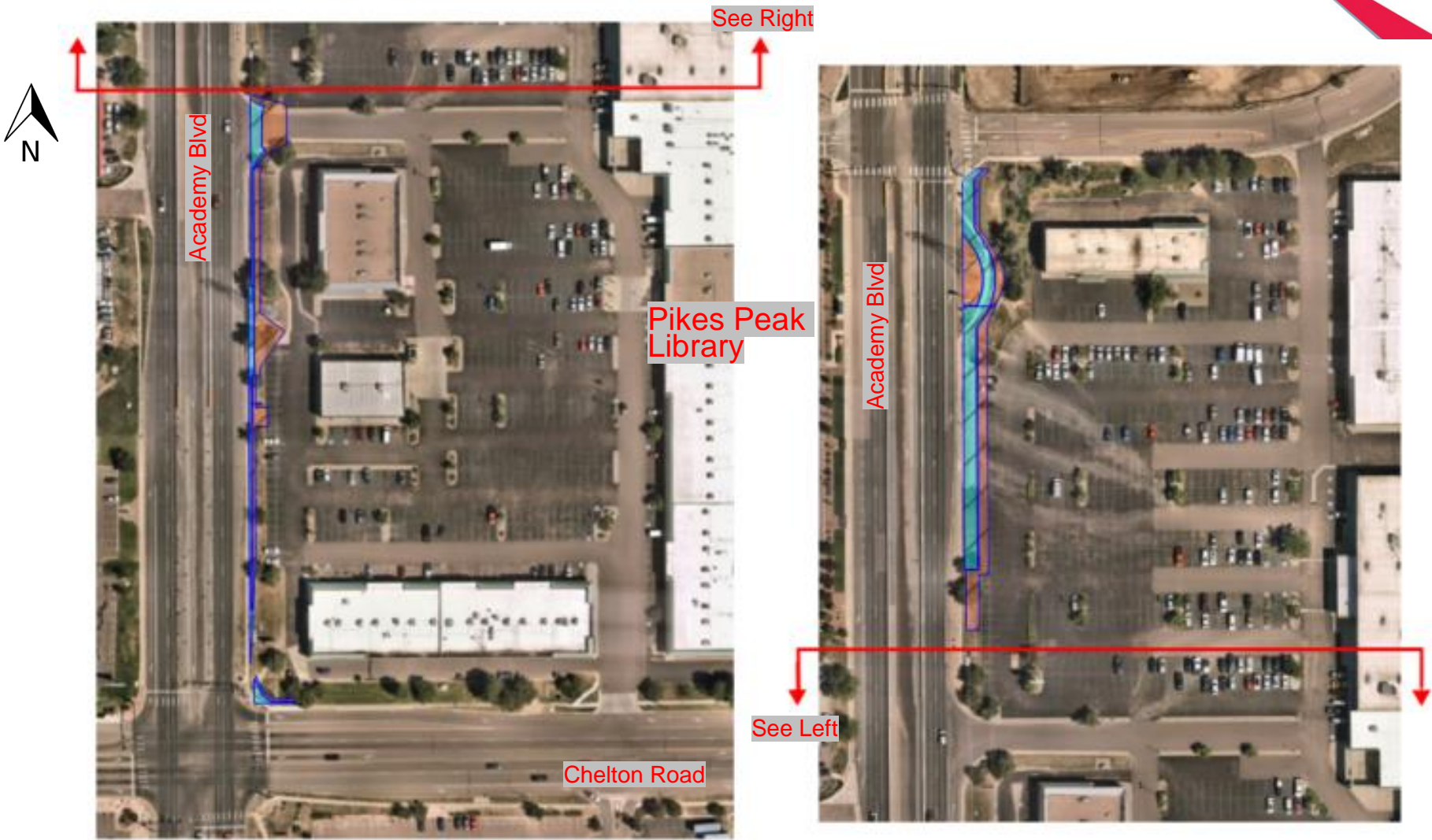


Capital Corona II, LP & MTCOR, LLC  
Permanent Public Improvement and Temporary  
Construction Easements

**November 27, 2023**

Gayle Sturdivant, PE, PMP, Acting Public Works Director/City Engineer

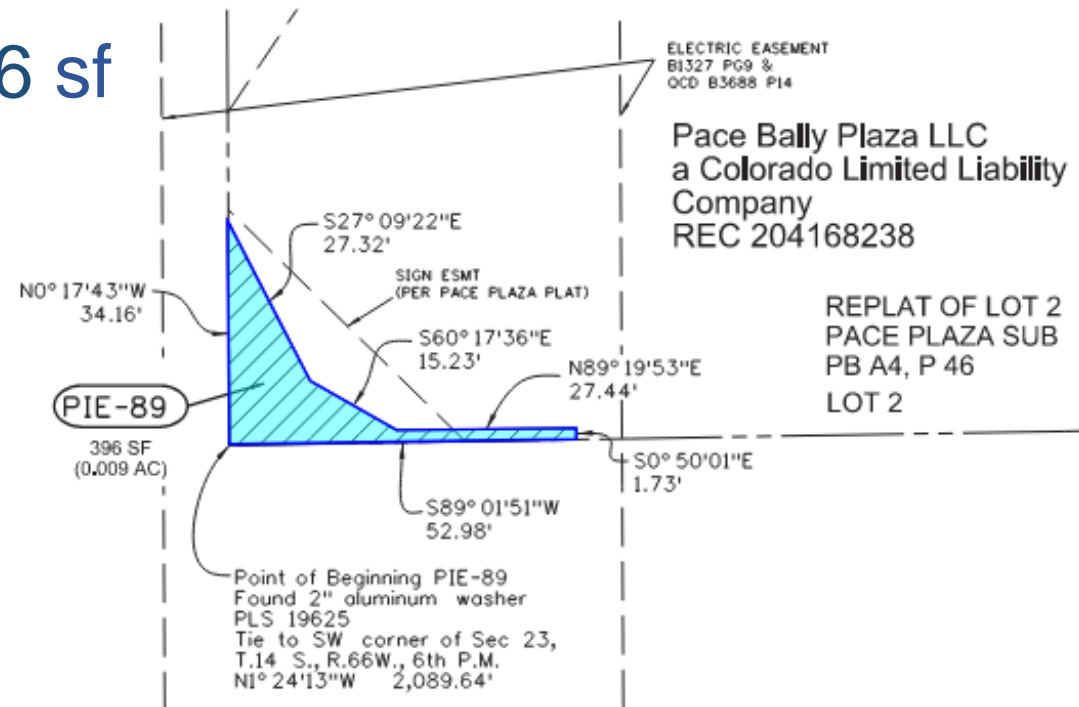




# Capital Corona II, LP & MTCOR, LLC

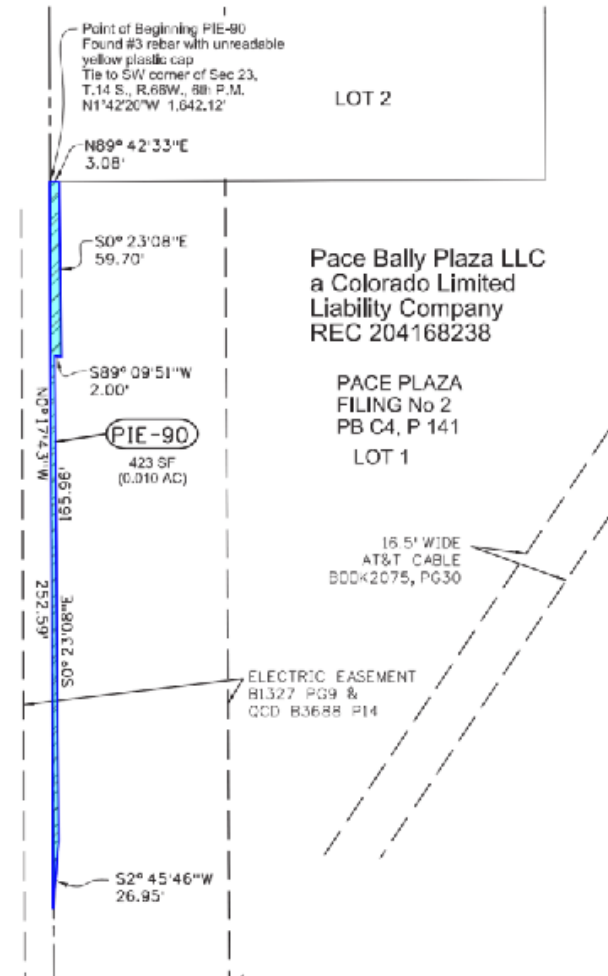
## Parcel 89

- Permanent Easement – 396 sf



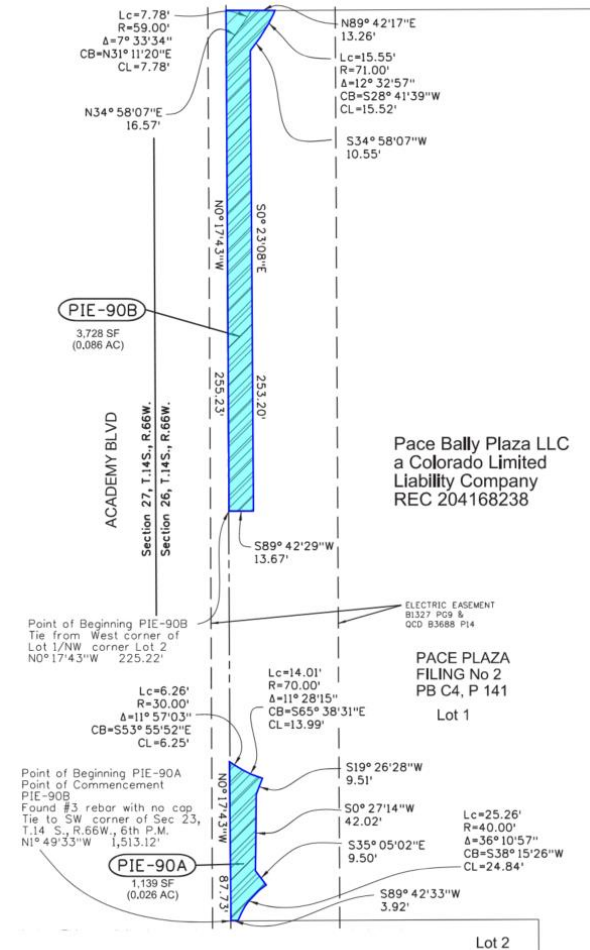
# MTCOR LLC & Capital Corona II, LP Parcel 90

- Permanent Easement – 423 sf



# Capital Corona II, LP & MTCOR, LLC Parcel 90A

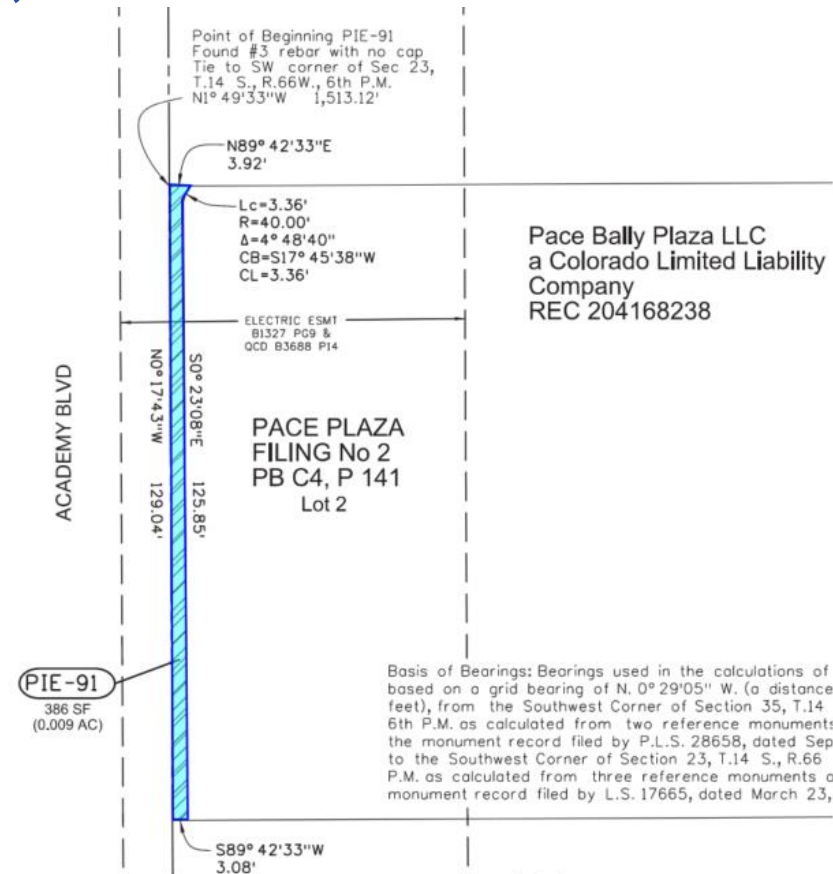
- Permanent Easement – 1,139 sf  
Parcel 90B
- Permanent Easement – 3,728 sf



# Capital Corona II, LP & MTCOR, LLC

## Parcel 91

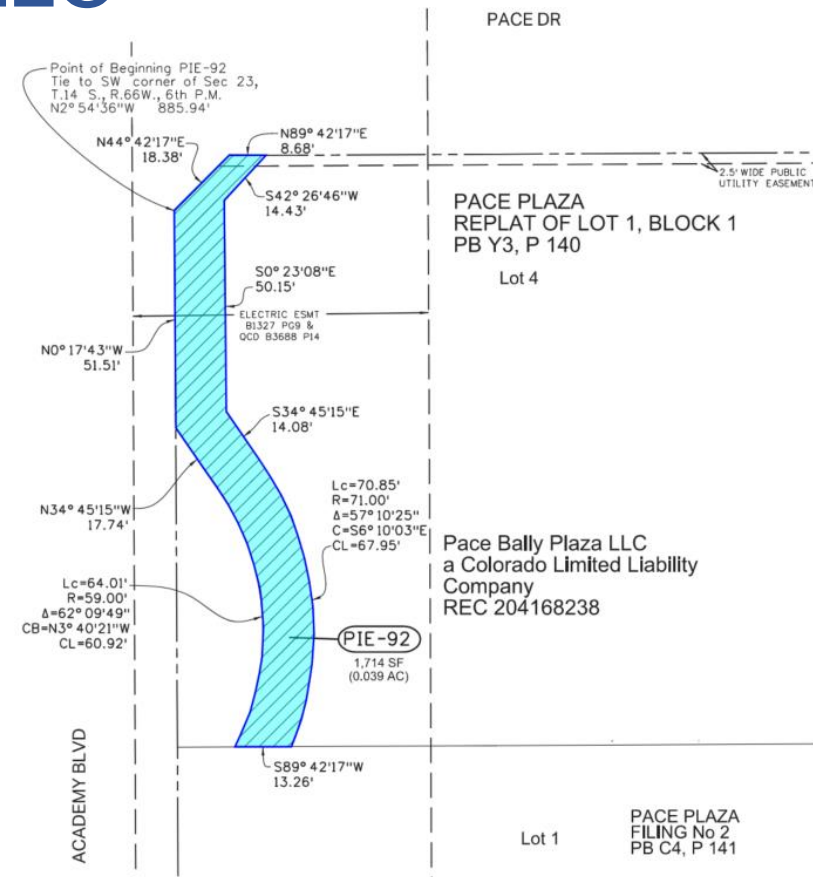
- Permanent Easement – 389 sf



# Capital Corona II, LP & MTCOR, LLC

## Parcel 92

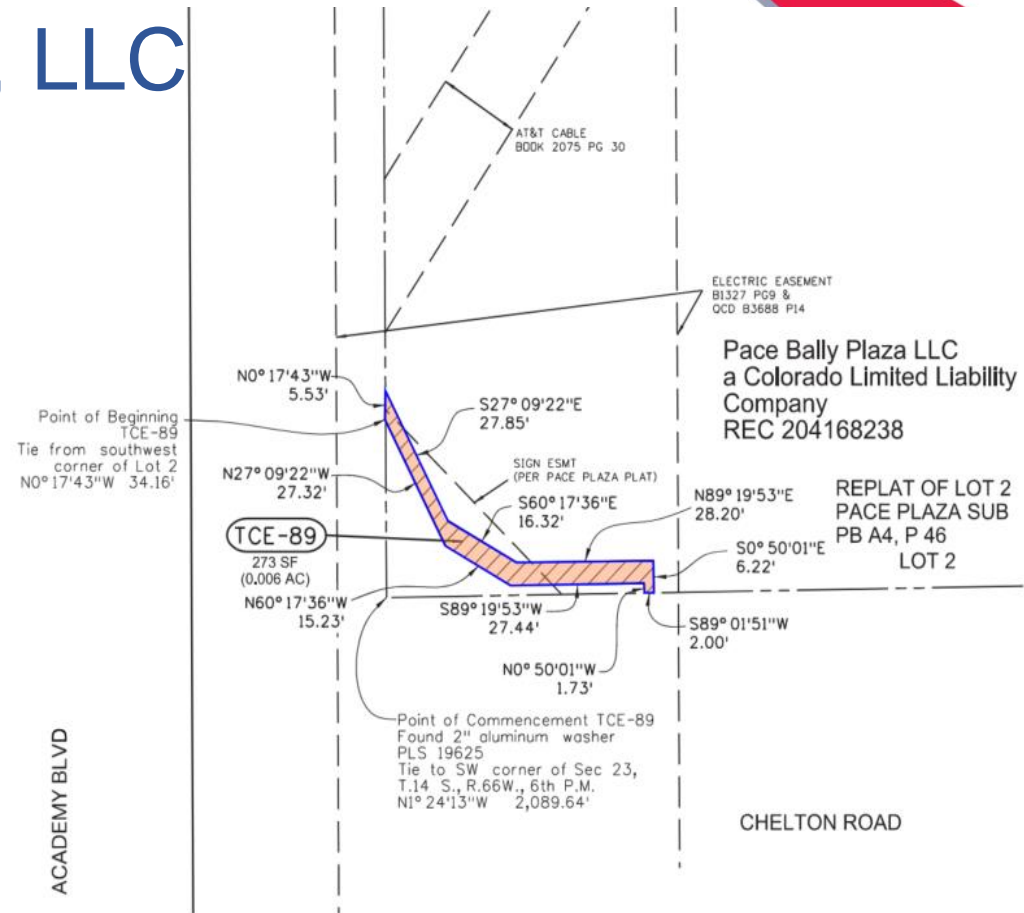
- Permanent Easement – 1,714 sf





# Capital Corona II, LP & MTCOR, LLC Parcel 89

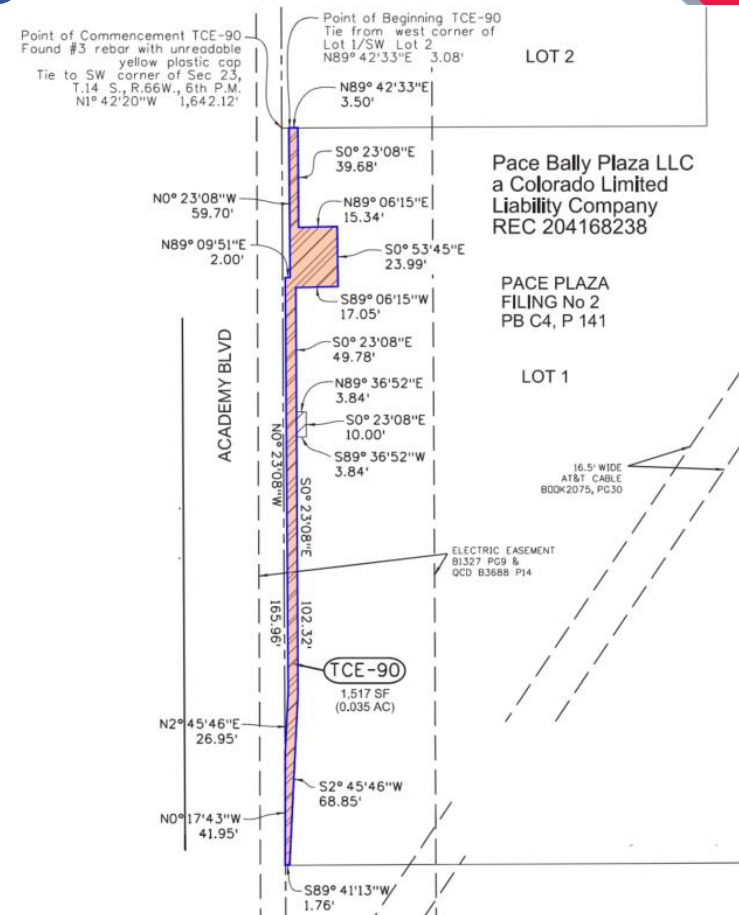
- Temporary Easement – 273 sf



# Capital Corona II, LP & MTCOR, LLC

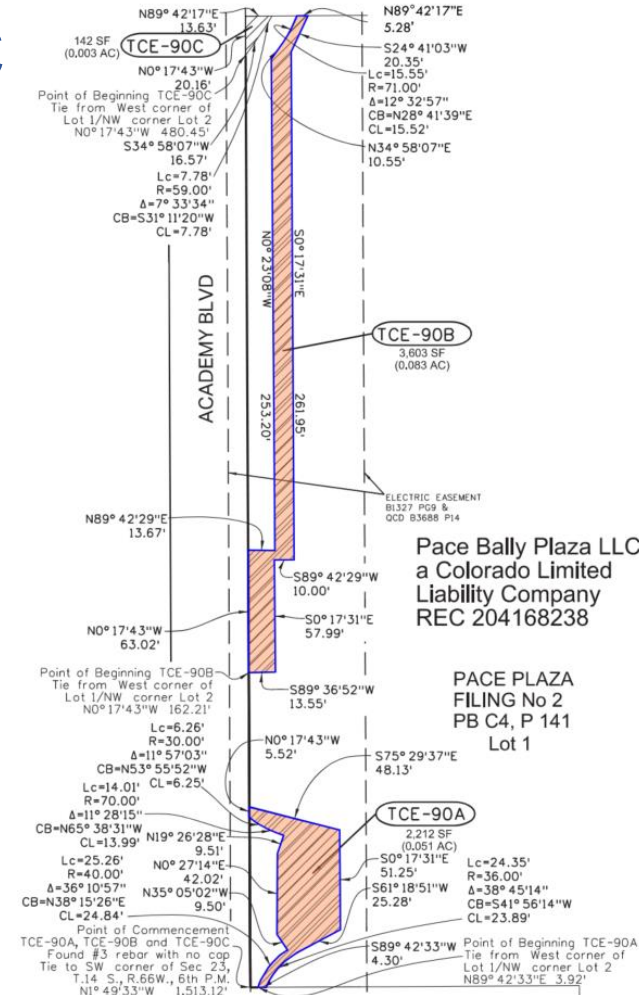
## Parcel 90

- Temporary Easement – 1,517 sf



# Capital Corona II, LP & MTCOR, LLC Parcel 90A

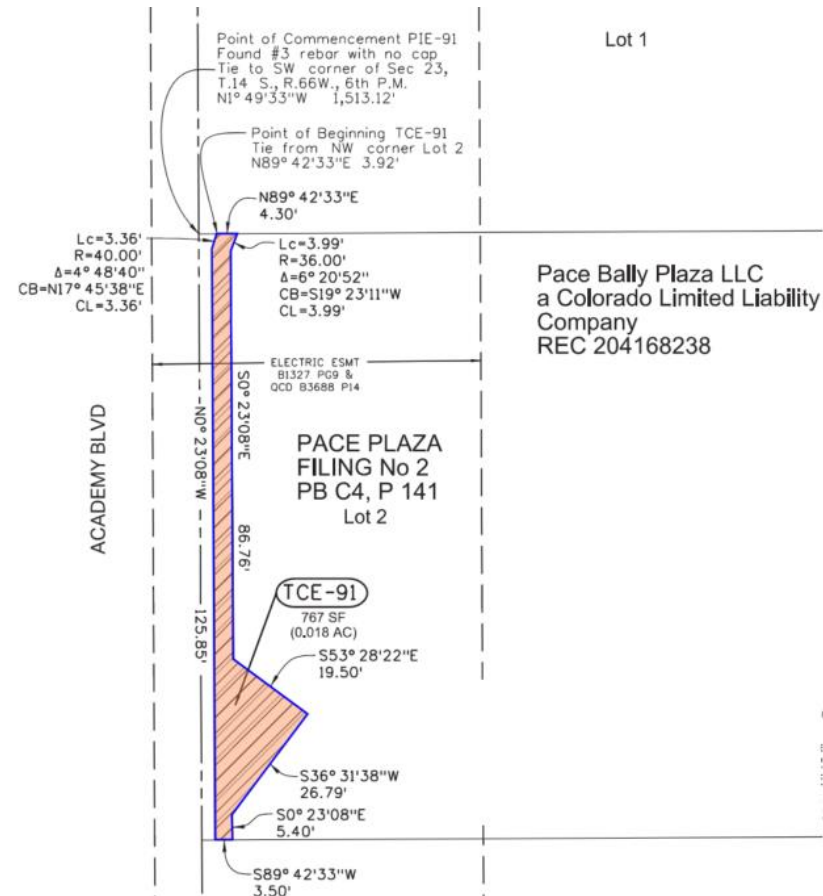
- Temporary Easement – 2,212 sf  
Parcel 90B
- Temporary Easement – 3,603 sf



# Capital Corona II, LP & MTCOR, LLC

## Parcel 91

- Temporary Easement – 767 sf



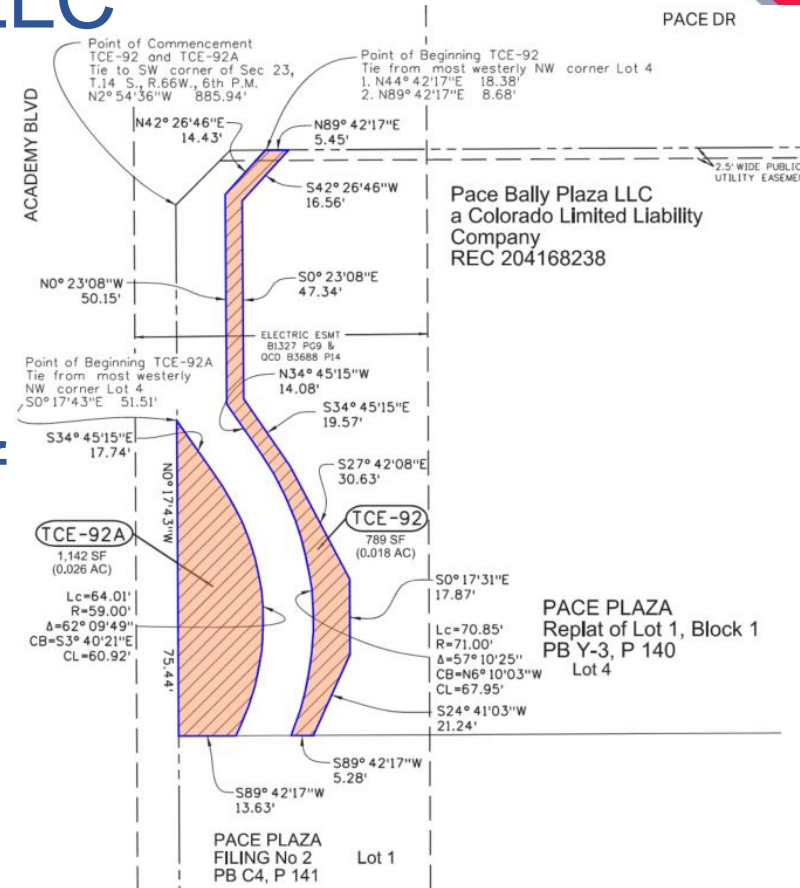
# Capital Corona II, LP & MTCOR, LLC

## Parcel 92

- Temporary Easement – 789 sf

## Parcel 92A

- Temporary Easement – 1,142 sf



## Capital Corona II, LP & MTCOR, LLC

- Permanent Easements
  - Total Area: 7,786 square feet
- Temporary Easements
  - Total Area: 10,445 square feet
- Value: \$104,800

- Acquisitions over \$100,000 must be approved by City Council
- Resolution authorizes staff to execute documents for property conveyance
- Contingent upon PPRTA funding