

RESOLUTION NO. 22-21

A RESOLUTION ESTABLISHING THE PARK LAND
DEDICATION ORDINANCE GEOGRAPHIC SERVICE
AREAS MAP FOR NEIGHBORHOOD PARKS

WHEREAS, the City of Colorado Springs has undertaken the task of updating of its Park Land Dedication Ordinance; and

WHEREAS, in the process of updating the Ordinance it was determined that the City should be divided into sectors, called Geographic Service Areas, for the purposes of ensuring that park services are in reasonable proximity to the applicable residential development; and

WHEREAS, under section 7.7.1207(C) of the newly ordained Park Land Dedication Ordinance, the City Council shall adopt the Geographic Service Areas boundaries and shall provide for not fewer than eight (8) service areas.

NOW, THEREFORE, BE IT RESOLVED BY THE CITY COUNCIL OF THE CITY OF COLORADO SPRINGS:

Section 1. The City Council adopts the Geographic Service Areas Map which contains eight (8) geographic service areas, depicted on Exhibit A, attached hereto and made a part of this resolution.


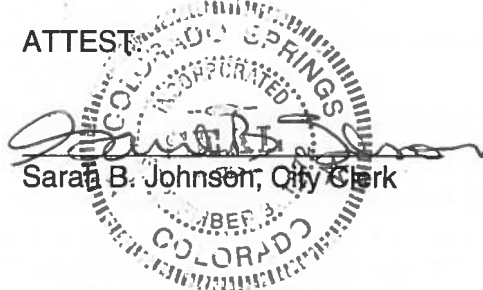
Section 2. This map shall be effective February 9th, 2021, and shall then remain effective until amended by subsequent Resolution of the City Council.

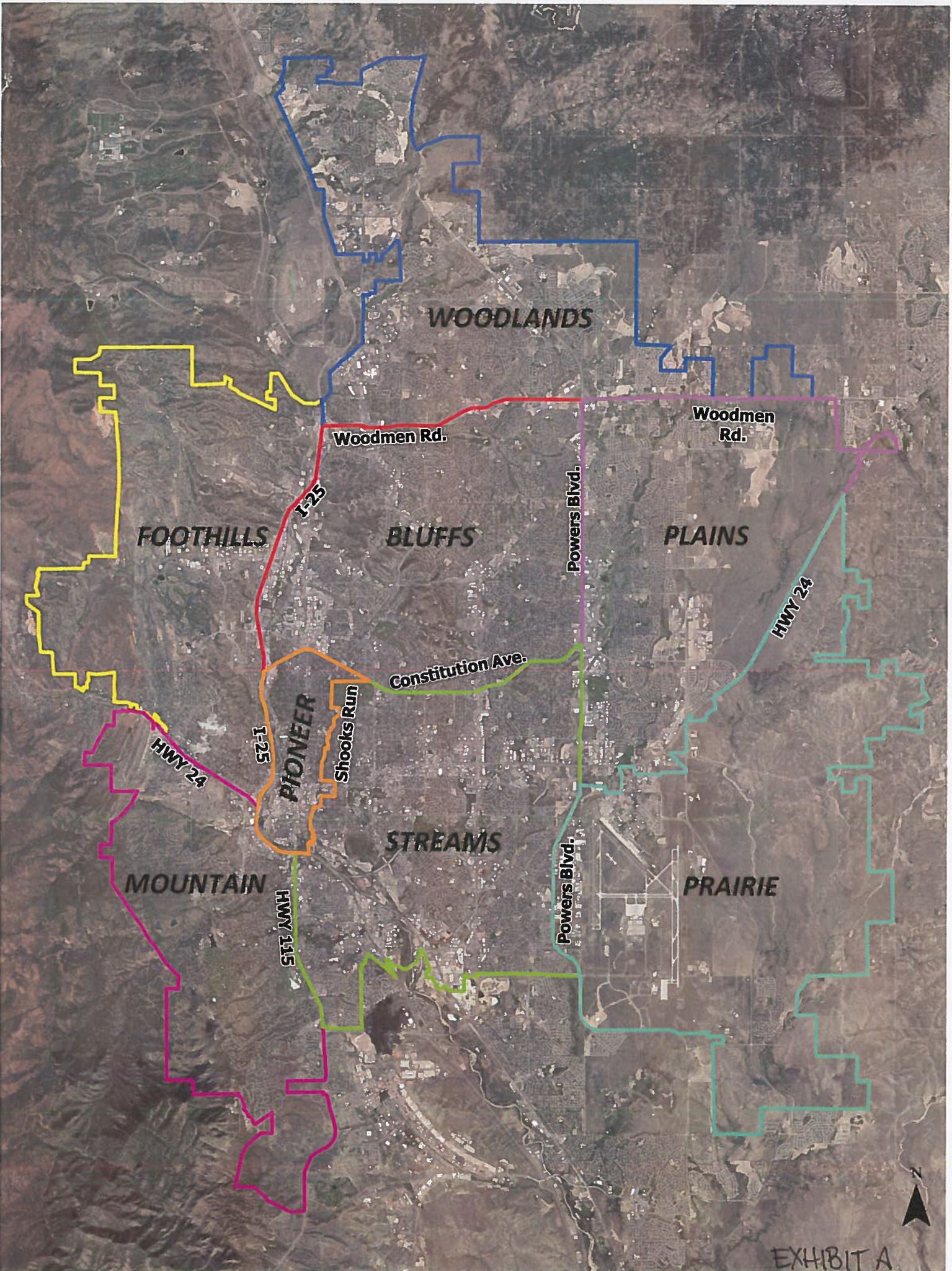
Dated at Colorado Springs, Colorado this 9th day of February, 2021.



Council President

ATTEST


Sara B. Johnson, City Clerk




WOODLANDS

FOOTHILLS

BLUFFS

PLAINS

PIONEER

STREAMS

MOUNTAIN

PRAIRIE

Woodmen Rd.

Woodmen Rd.

I-25

Powers Blvd.

HWY 24

Constitution Ave.

HWY 24

I-25

Shooks Run

Powers Blvd.

HWY 115



EXHIBIT A