

PBC/AO
PARCEL RECEPTION
#204048326

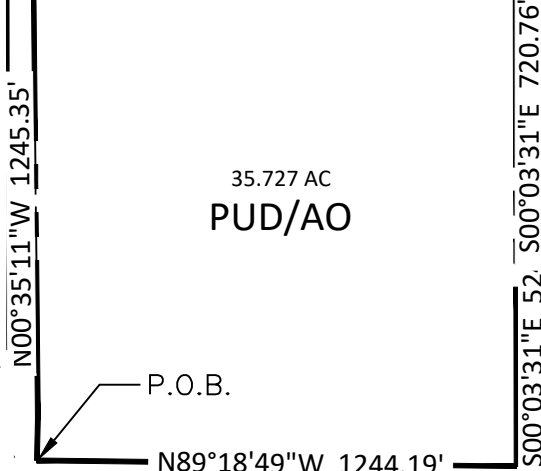
R1-6, R5/AO
PARCEL RECEPTION
#214104176

R1-6, R5/AO

BARNES ROAD (PARCEL NO. 5300-00-629)

PUD/AO
PARCEL RECEPTION
#220029536

PIP2/AO PARCEL RECEPTION #96020361
S89°19'00"E 1255.66'



PUD/AO

*ENCLAVES AT MOUNTAIN
VISTA FILING NO. 5*
REC. NO. 219714360

MARKSHEFFEL ROAD (REC NO. 210095656)

GRAPHITE DRIVE (REC NO. 218714147)

PUD/AO
PARCEL RECEPTION
#220029536

PBC/AO
PARCEL
#53000-00-686

ENCLAVES AT MOUNTAIN RANCH FILING NO. 2A
REC. NO. 219714360

PUD (PLANNED UNIT DEVELOPMENT) / AO (AIRPORT OVERLAY)

The mix of land use types and the intensity of the land uses established for this PUD are as follows:

- RESIDENTIAL: MAX DENSITY: 24.99 DU/AC
MAX BUILDING HEIGHT: 45FT
- COMMERCIAL: MAX GROSS SQUARE FOOTAGE: 40,000SQFT
MAX BUILDING HEIGHT: 45FT

FALCON TRUCKING AT BLR - PUD ZONE CHANGE EXHIBIT B

DATE: 11.15.22

ISSUED FOR: ENTITLEMENT

DRAWN BY: TK

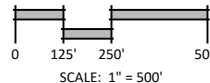
DWG. REF.:

SCALE: 1"=500'

CITY FILE NO. ZONE-22-0021



NORTH



N.E.S. Inc.
619 N. Cascade Ave.
Suite 200
Colorado Springs, CO 80903
Tel. 719.471.0073
Fax 719.471.0267
www.nescolorado.com