

# Ordinance to prohibit the use of e-cigarettes on buses and further restrict smoking in the Downtown Bus Terminal

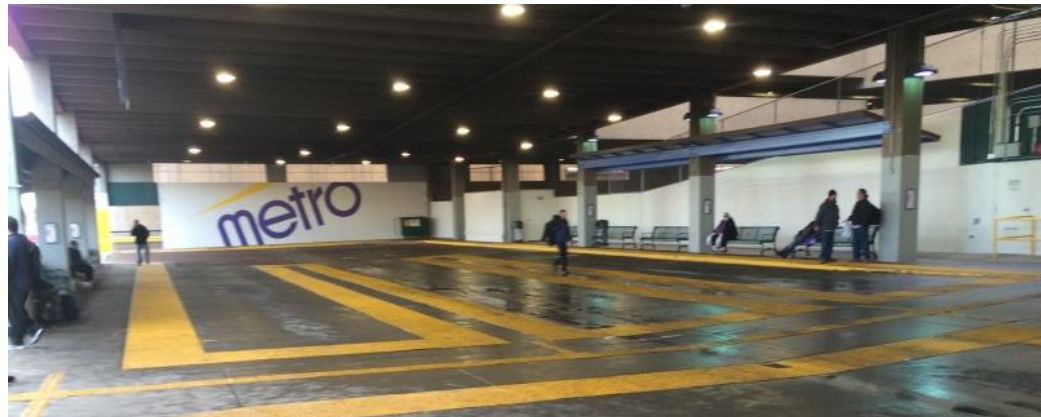
January 9, 2017

Craig Blewitt



# Proposal

To clarify current smoking prohibitions to include the Downtown Bus Terminal passenger boarding area and add a prohibition on they use of e-cigarettes in buses, other transit vehicles and the same areas in the Terminal



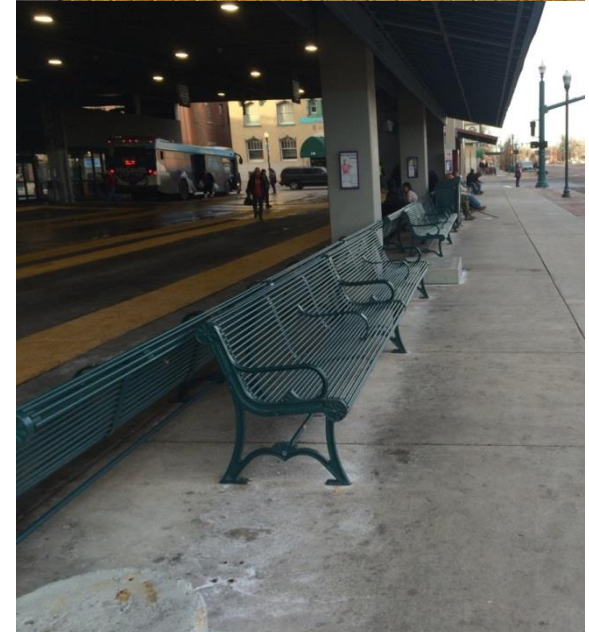
# Proposal

- Smoking
  - Current: prohibited in buses and inside Downtown Terminal lobby
  - Proposal: clarify to also prohibit in the passenger boarding area (sidewalks excluded)



# Proposal

- E-cigarettes
  - Current: no restrictions
  - Proposal: prohibit e-cigarette use in buses, Downtown Terminal lobby and passenger boarding area (sidewalks excluded)



# Why?

- Smoking
  - Secondhand cigarette smoke is harmful
  - Passenger waiting area is enclosed on two sides and ceiling
  - Smoke lingers and is unavoidable to others





# Why?

- E-cigarette use/vaping
  - Surgeon General issued report that secondhand vapor can contain harmful chemicals
  - Buses are confined space
  - Annoying to some other riders

# Why?

- E-cigarette use/vaping
  - “Contrary to the belief by many, the aerosol that’s produced by e-cigarettes is not harmless water vapor for either the user or those who inhale it secondhand. It often contains nicotine and other chemical compounds which can have harmful effects on the user, as well as those who inhale it secondhand” Surgeon General, December 8, 2016
  - Among the Report’s recommended actions is to incorporate e-cigarettes into smoke-free places.

# Next Steps

- If approved:
  - Public awareness campaign
  - Enforcement on buses by drivers and at the DT Terminal by supervisors, drivers and security guard









NO SMOKING  
WITHIN 15 FT  
OF SIDEWALK

DOWNTOWN  
PUBLIC PARKING  
P

DOWNTOWN  
PUBLIC PARKING

PUBLIC PARKING  
MAIN ENTRANCE

NO TRESPASSING  
CUSTOMERS  
ONLY

DOWNTOWN  
PUBLIC PARKING  
P

NO UNAUTHORIZED  
VEHICLES

DO NOT RIDE  
SKATEBOARDS

DO NOT RIDE  
BICYCLES

LOITERING  
FACILITY IS FOR USE  
BY VISITING TOURIST  
CUSTOMERS ONLY  
BY PERSONS REMAINING  
IN THIS FACILITY FOR  
MORE THAN 1 HOUR