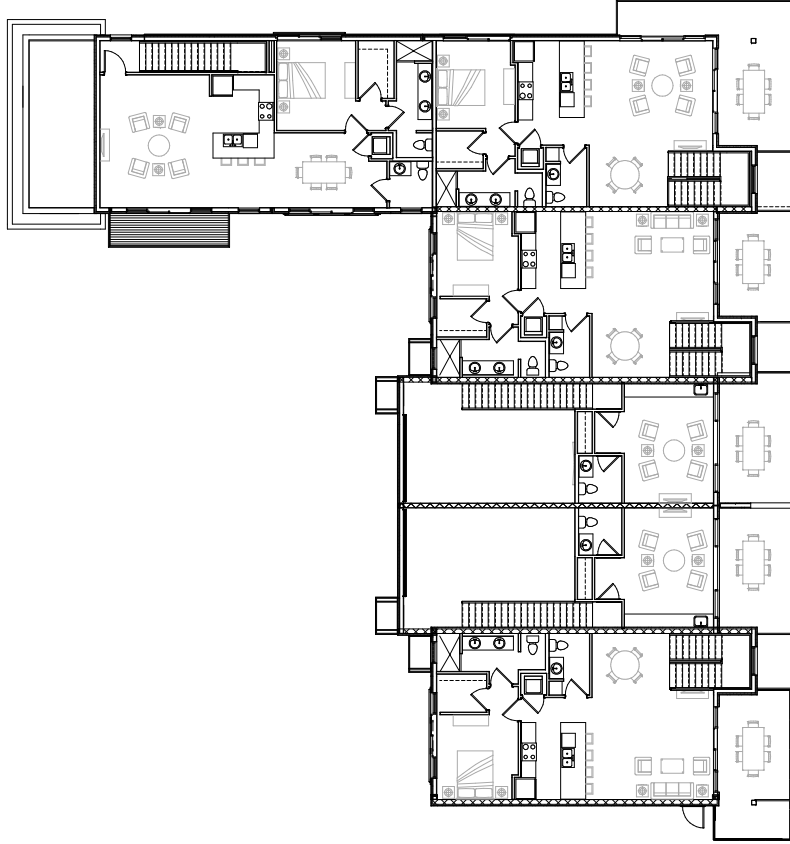
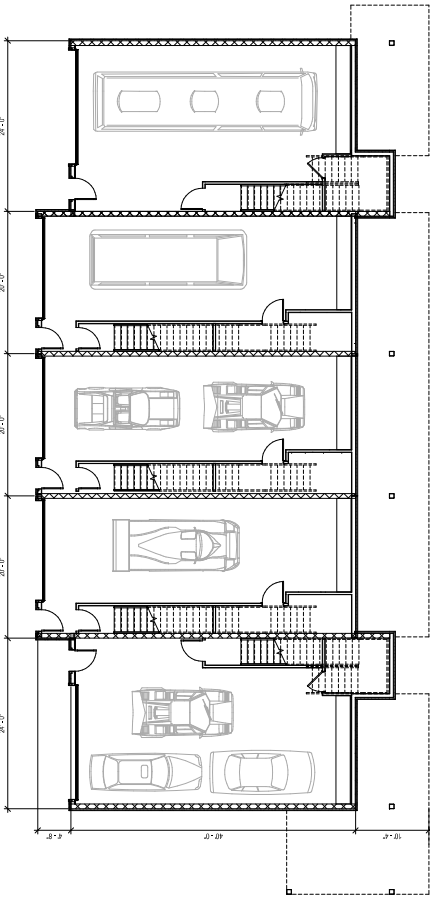


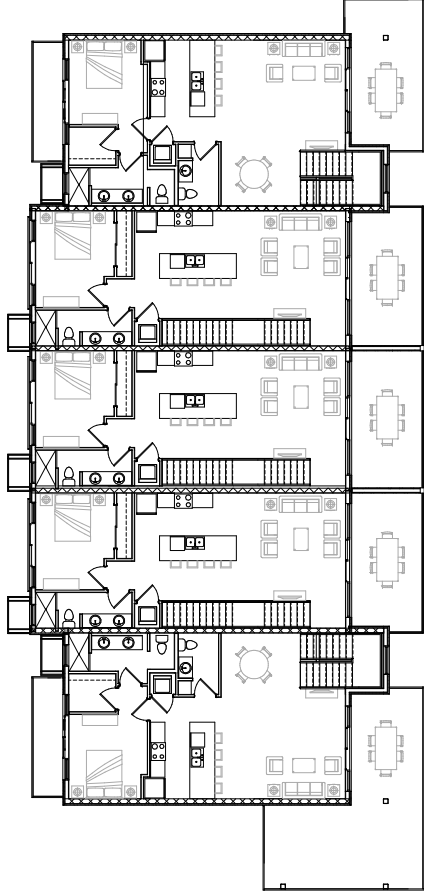
1 1ST FLOOR
18'-7 1/2"



2 2ND FLOOR
18'-7 1/2"



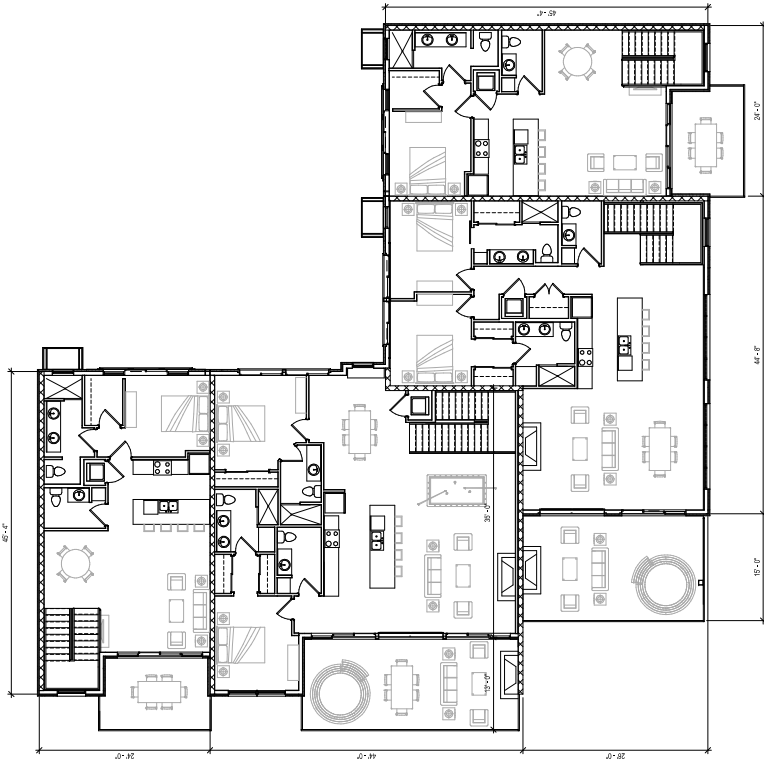
1 1ST FLOOR
1/8" = 1'-0"



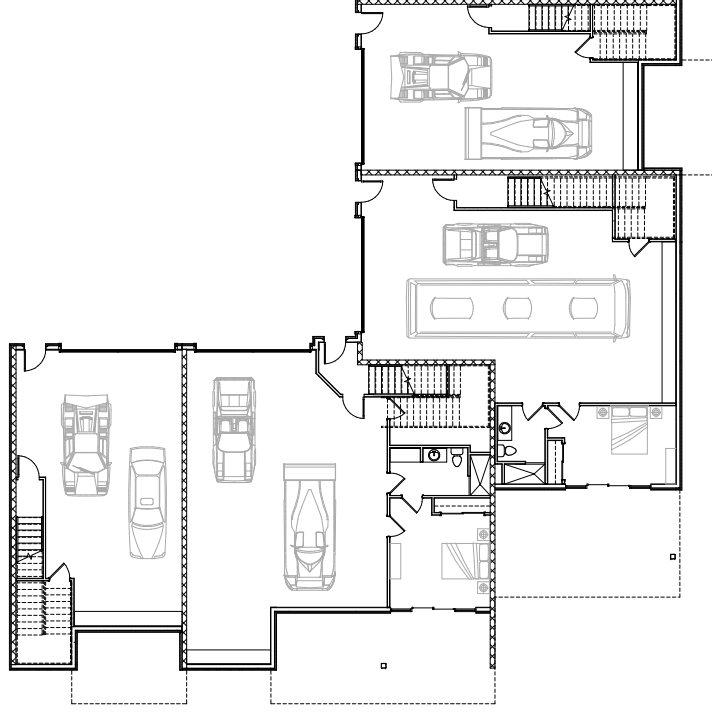
2 2ND FLOOR
1/8" = 1'-0"



QUAIL LAKE MOTOR CLUB BUILDING 2



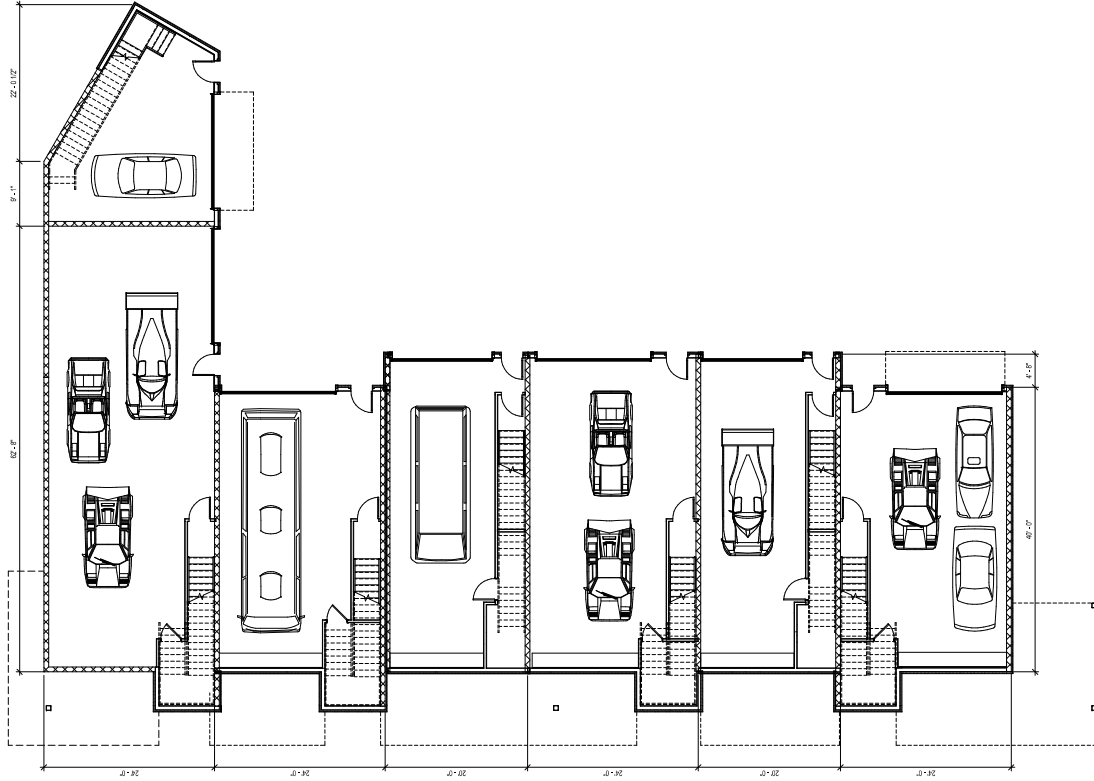
2 2ND FLOOR
10/11/12



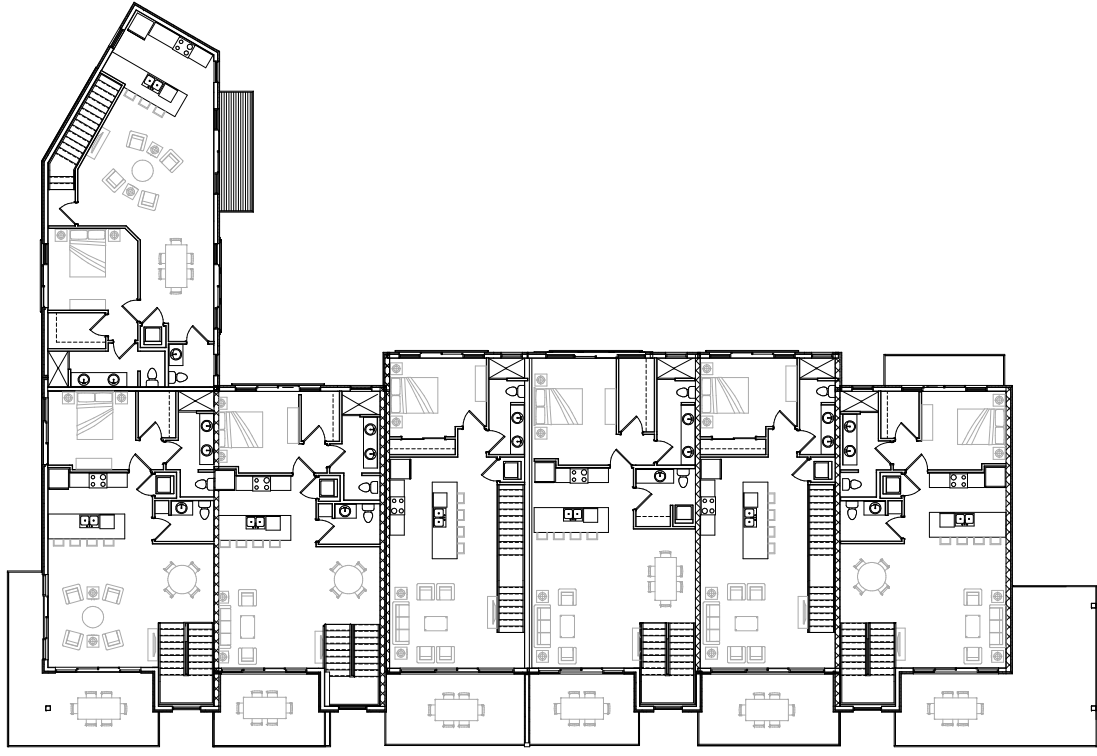
1 1ST FLOOR
10/11/12



QUAIL LAKE MOTOR CLUB - BUILDING 3



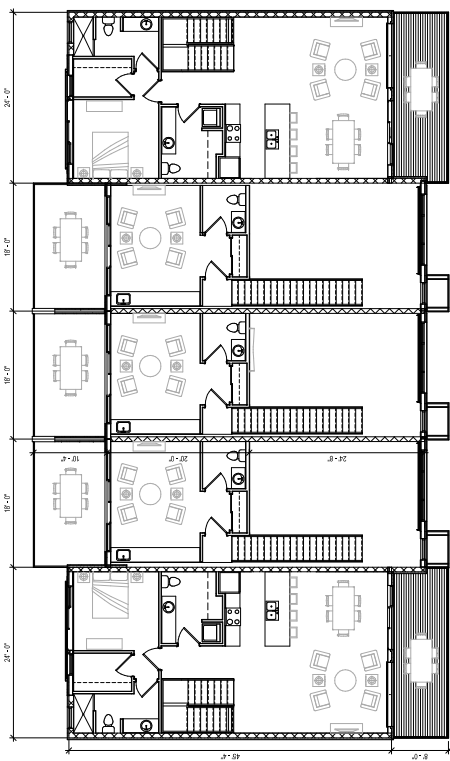
1 1ST FLOOR
18'-0" x 42'



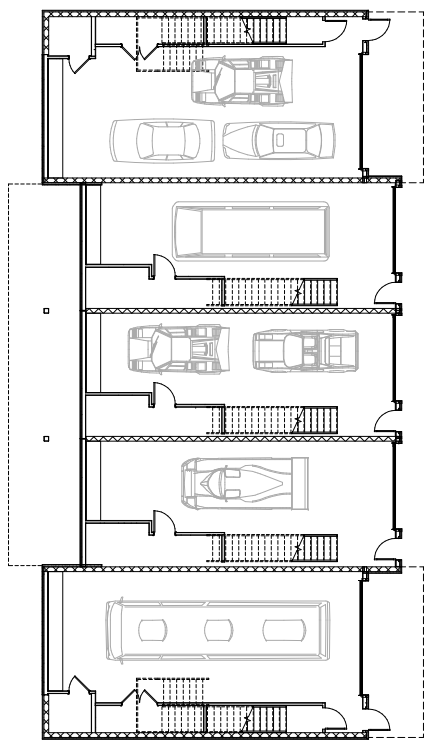
2 2ND FLOOR
18'-0" x 42'

QUAIL LAKE MOTOR CLUB - BUILDING 4





2 2ND FLOOR
187'-11/2"



1 1ST FLOOR
187'-11/2"



QUAIL LAKE MOTOR CLUB BUILDING 5