

# First Amendment to the IGA for Inter-Connecting Bus Service with the City of Fountain

City Council Work Session

December 7, 2020

Craig Blewitt, Transit Services Manager

Brian Vitulli, Transit Planning Supervisor



# Background

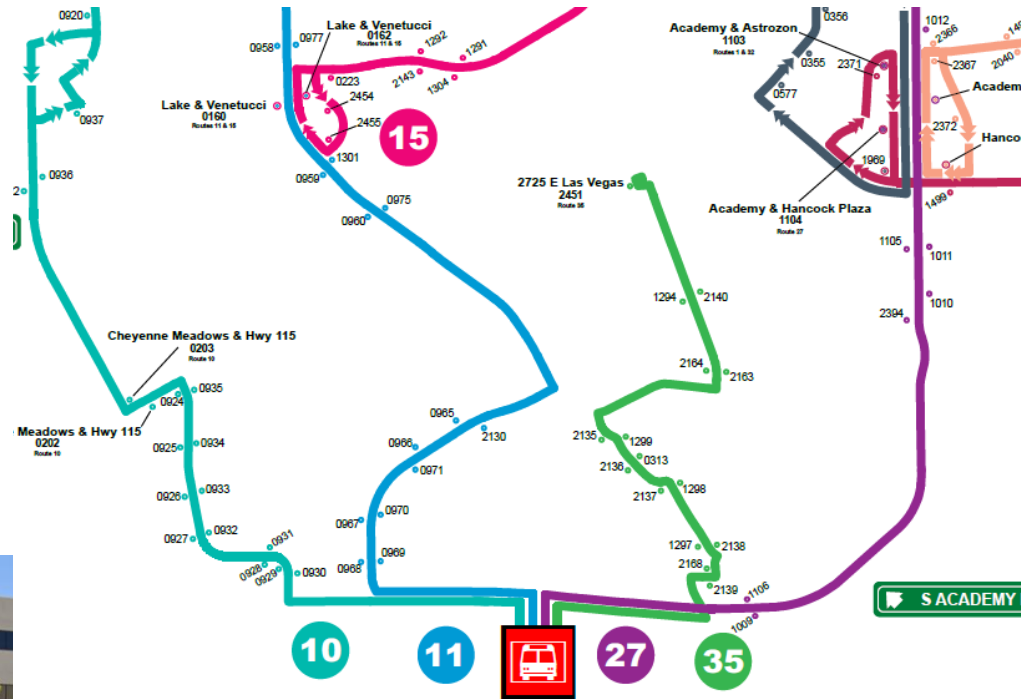
- A new El Paso County Health Facility will open in the City of Fountain by December 31, 2020
- Transit access to the new facility is key to community access to health care
- Fountain is not part of the PPRTA and runs a separate transit service
- Good, convenient transfer locations between the two services will provide transit access to the new Health Facility from the community at large

# Transfer Options

- The current PPCC Transfer Station connects four MMT bus routes to the Fountain bus service - MMT Routes 10, 11, 27 and 35
- The proposed IGA amendment will allow the Fountain bus service to co-serve an MMT bus stop in Security, providing the opportunity for transit riders to transfer to/from MMT's Route 32 (serving Security/Widefield) to the Fountain bus service - and access the new facility

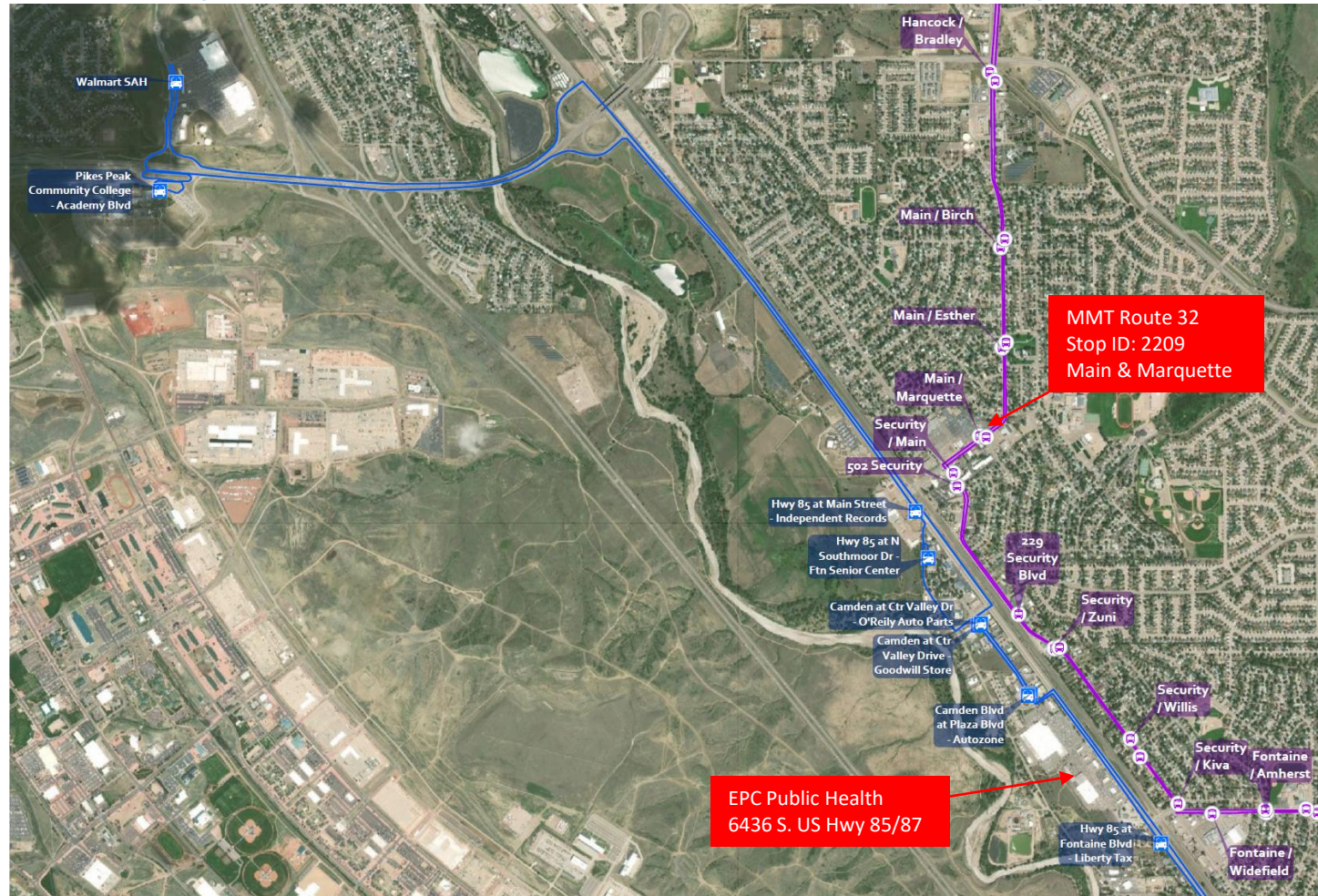
# PPCC Transfer Station

- Map showing how 4 MMT routes feed into PPCC's Centennial Campus

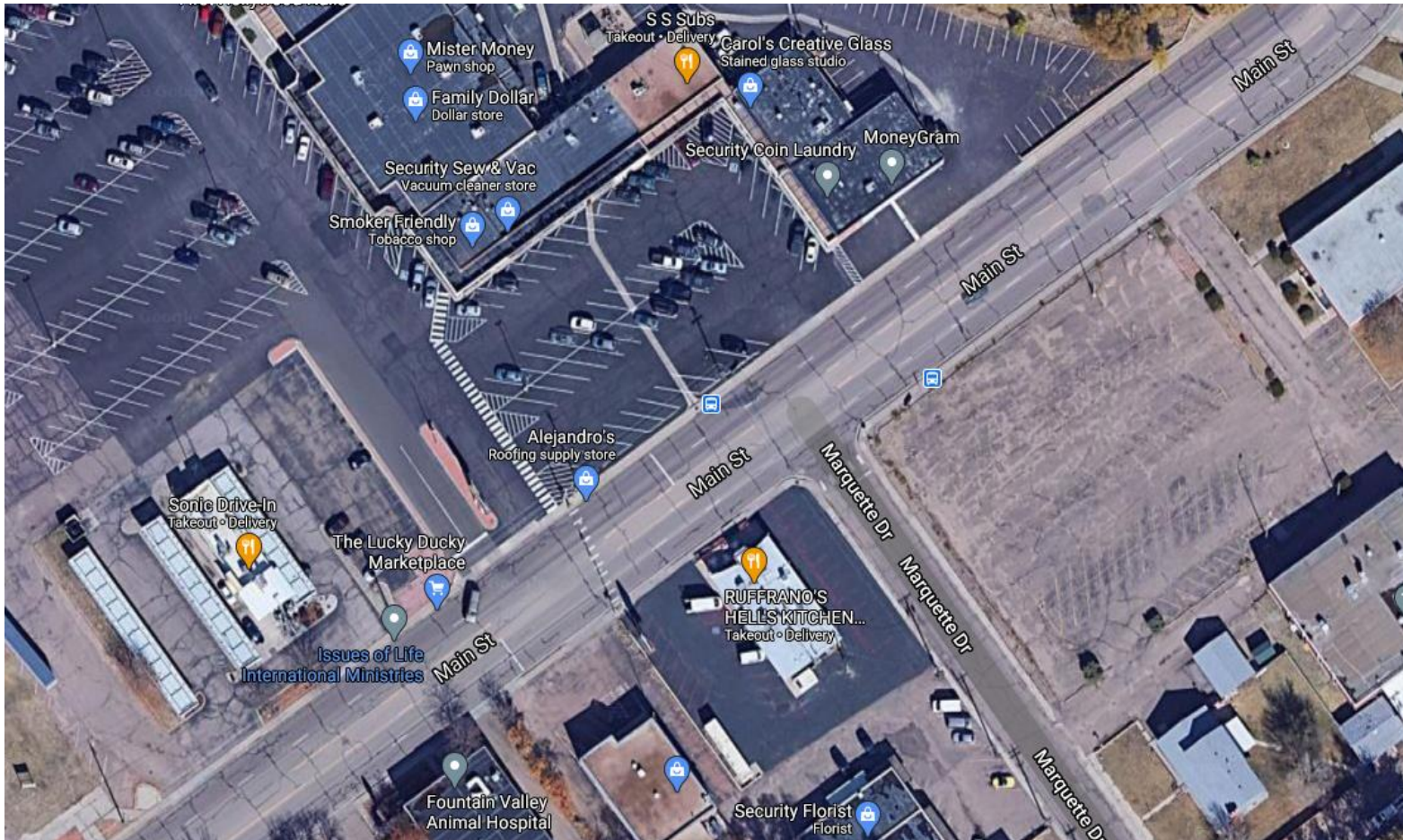


# New County Public Health Facility

- Map showing the Health Facility location in relation to Route 32



# Bus Stop Transfer Location



# Questions?



Craig Blewitt, Transit Services Division Manager  
Brian Vitulli, Transit Services Planning Supervisor