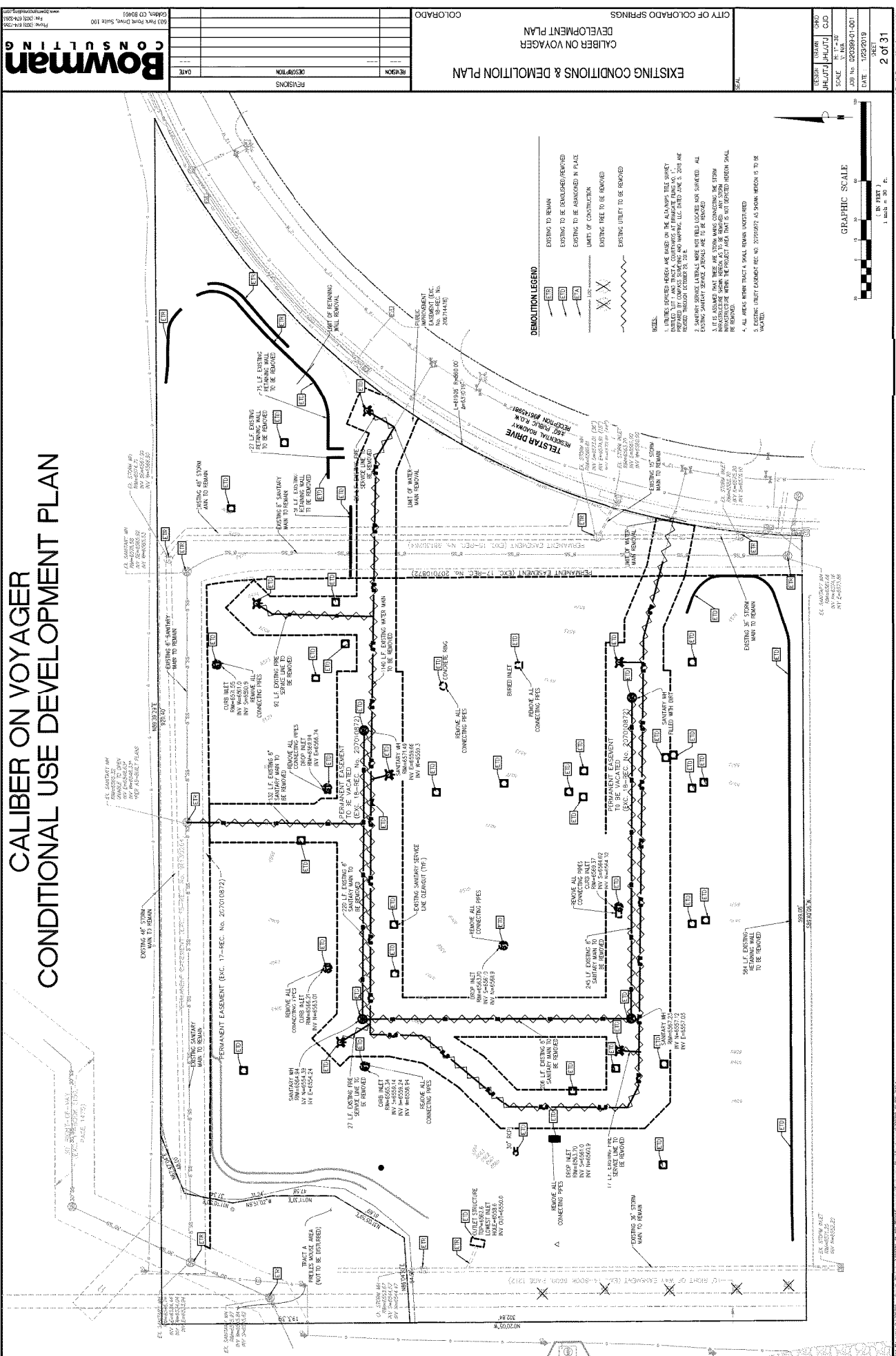


CALIBER ON VOYAGER CONDITIONAL USE DEVELOPMENT PLAN



REVISION	DESCRIPTION	DATE

Bowman CONSULTING
 1000 Park Drive, Suite 100
 Golden, CO 80401
 Phone: (303) 734-7233
 Fax: (303) 734-2008
 www.bowmanconsulting.com

CITY OF COLORADO SPRINGS
 DEVELOPMENT PLAN
 EXISTING CONDITIONS & DEMOLITION PLAN

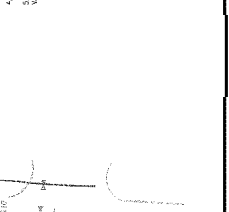
PROJECT NUMBER	12292019
DATE	12/29/2019
PROJECT NAME	CALIBER ON VOYAGER
PROJECT LOCATION	
PROJECT NUMBER	2019-01-001
DATE	12/29/2019

DEMOLITION LEGEND

- EXISTING TO BE DEMOLISHED/REMOVED
- EXISTING TO BE ABANDONED IN PLACE
- LIMITS OF CONSTRUCTION
- EXISTING TREE TO BE REMOVED
- EXISTING UTILITY TO BE REMOVED

NOTES:

1. UTILITIES LOCATED HEREON ARE BASED ON THE AVAILABLE TITLE SHEETS PROVIDED BY COMPASS SURVEYING AND MAPPING, LLC DATED JUNE 5, 2018 AND RECORDED THROUGH COLORADO REC. NO. 201804182.
2. EXISTING UTILITY LOCATIONS ARE INDICATED BY THE FOLLOWING: ALL EXISTING UTILITY LOCATIONS ARE TO BE REMOVED UNLESS OTHERWISE NOTED.
3. IT IS ASSUMED THAT THERE ARE STORM MAINS CONCERNING THE STORM INFRASTRUCTURE SHOWN HEREON AS TO BE REMOVED. ANY STORM INFRASTRUCTURE TO BE REMOVED SHALL BE REMOVED IN ACCORDANCE WITH THE CITY OF COLORADO SPRINGS STANDARD SPECIFICATIONS FOR CONSTRUCTION, SECTION 100.01.01.
4. ALL AREAS WITHIN TRACT A SHALL REMAIN UNDEVELOPED.
5. EXISTING UTILITY EASEMENT REC. NO. 20190427 AS SHOWN HEREON IS TO BE VACATED.



SHEET 2 of 31
 CITY FILE NO. CUC. 00. 19-00002

FIGURE 1

CALIBER ON VOYAGER CONDITIONAL USE DEVELOPMENT PLAN

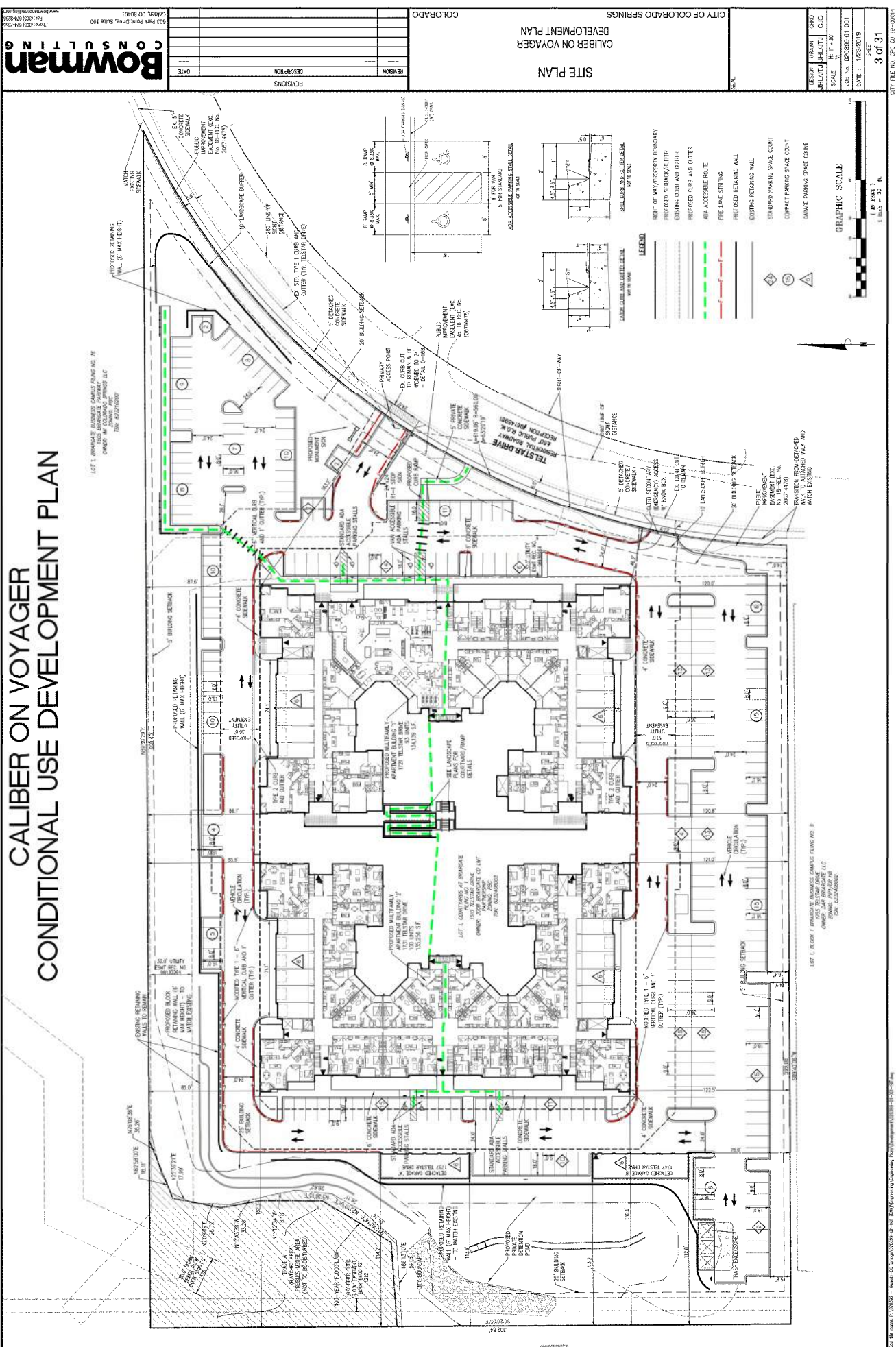
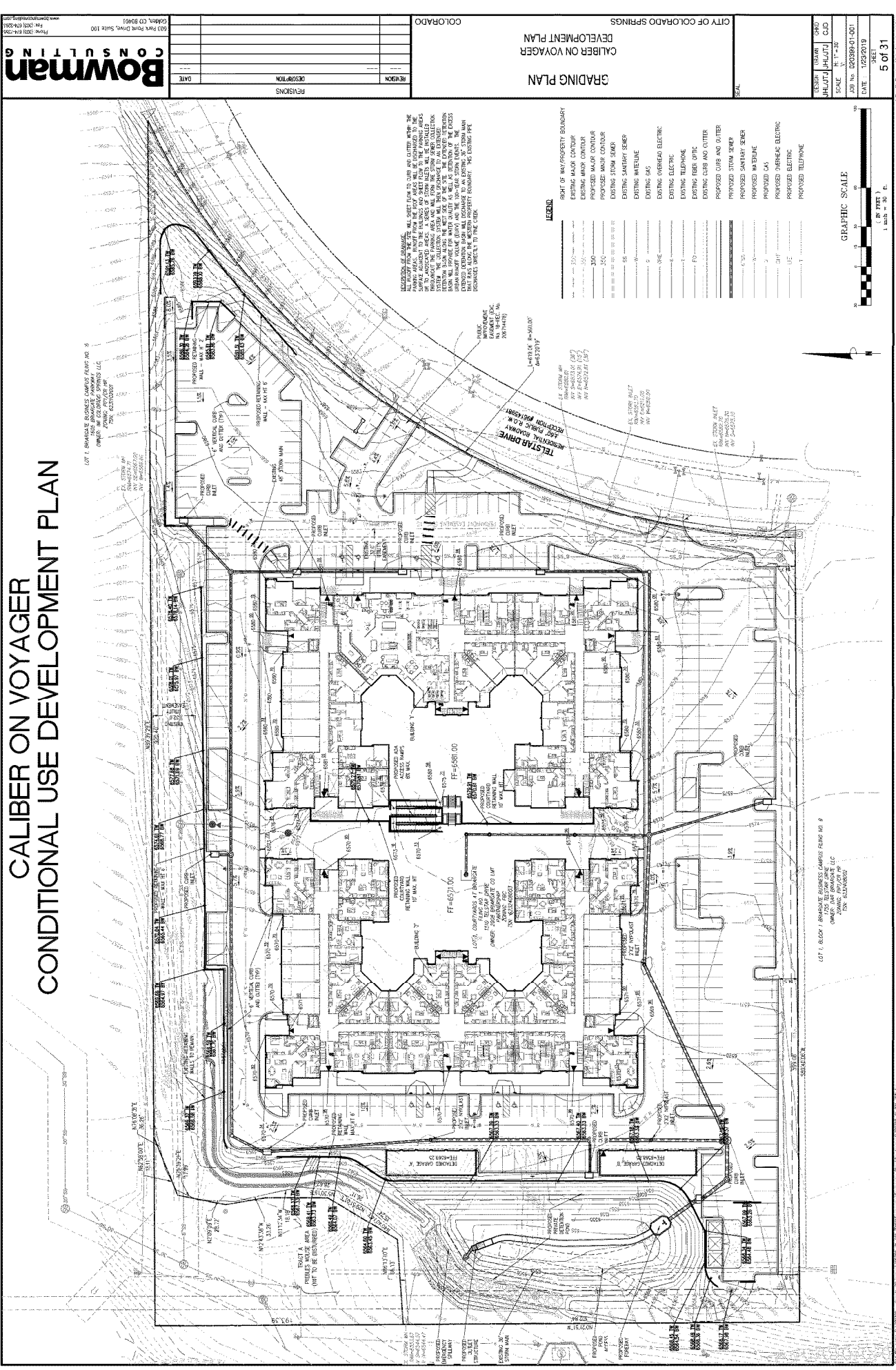


FIGURE 1

CALIBER ON VOYAGER CONDITIONAL USE DEVELOPMENT PLAN



LOT 1, 6/804 1 BUSINESS CAMPUS FILING NO. 9
OWNER: RAY SHAWMATE LLC
OWNER'S ARCHITECTURE FIRM: RAY SHAWMATE LLC
DATE: 02/27/2019

LOT 1, 6/804 1 BUSINESS CAMPUS FILING NO. 6
OWNER: RAY SHAWMATE LLC
OWNER'S ARCHITECTURE FIRM: RAY SHAWMATE LLC
DATE: 02/27/2019

LOT 1, 6/804 1 BUSINESS CAMPUS FILING NO. 7
OWNER: RAY SHAWMATE LLC
OWNER'S ARCHITECTURE FIRM: RAY SHAWMATE LLC
DATE: 02/27/2019

LOT 1, 6/804 1 BUSINESS CAMPUS FILING NO. 8
OWNER: RAY SHAWMATE LLC
OWNER'S ARCHITECTURE FIRM: RAY SHAWMATE LLC
DATE: 02/27/2019

REVISIONS
REVISION
DESCRIPTION
DATE

Bowman CONSULTING
2025 Park Road Drive, Suite 100
Boulder, CO 80501
Phone: (303) 441-7233
Fax: (303) 441-7234
www.bowmanconsulting.com

CITY OF COLORADO SPRINGS
DEVELOPMENT PLAN
CALIBER ON VOYAGER
GRADING PLAN

SCALE: 1" = 10' (AS SHOWN)
JOB No. 230398-01-001
DATE: 1/29/2019
SHEET
5 of 31
CITY FILE NO. 030.00.18-0006-04

LEGEND

—	RIGHT OF WAY PROPERTY BOUNDARY
---	EXISTING MAJOR CONDUIT
---	PROPOSED MAJOR CONDUIT
---	EXISTING WADP CONDUIT
---	EXISTING STORM SEWER
---	EXISTING SANITARY SEWER
---	EXISTING WASTELINE
---	EXISTING GAS
---	EXISTING OVERHEAD ELECTRIC
---	EXISTING ELECTRIC
---	EXISTING TELEPHONE
---	EXISTING FIBER OPTIC
---	EXISTING CURB AND GUTTER
---	PROPOSED CURB AND GUTTER
---	PROPOSED STORM SEWER
---	PROPOSED SANITARY SEWER
---	PROPOSED WASTELINE
---	PROPOSED GAS
---	PROPOSED OVERHEAD ELECTRIC
---	PROPOSED ELECTRIC
---	PROPOSED TELEPHONE

GRAPHIC SCALE
0 5 10 15 20
1 inch = 20'

NOTICE: THIS PLAN IS FOR THE PURPOSES OF THE DEVELOPMENT PLAN ONLY. IT IS NOT TO BE CONSIDERED AS A GRADING PLAN UNTIL THE GRADING PLAN IS APPROVED BY THE CITY ENGINEER. THE ENGINEER IS NOT RESPONSIBLE FOR THE ACCURACY OF THE INFORMATION PROVIDED HEREON. THE USER SHALL BE RESPONSIBLE FOR OBTAINING ALL NECESSARY PERMITS AND UTILITIES INFORMATION PRIOR TO CONSTRUCTION.



#	Date	Comments
1	2/22/2019	Lighting Update
2	3/15/19	PIE Update

Revisions	
#	Description

Scale: 1" = 30'

Drawn By: Various
 Checked By: JJR
 Date: 3/17/2019

Caliber at Voyager Site Lighting

Sheet 6 of 31
 CITY FILE NO. CPC 0119-0084

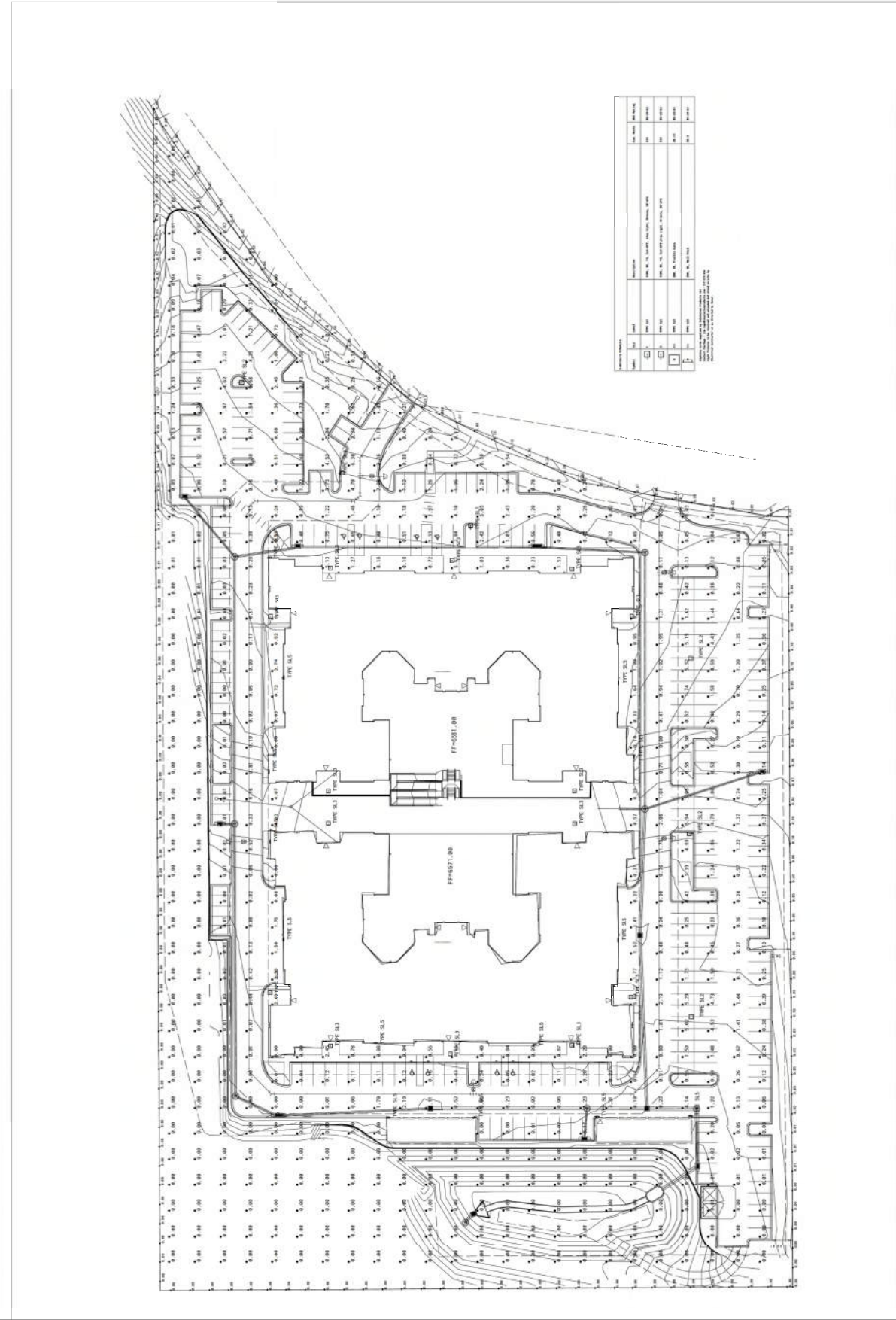


FIGURE 1



TYPE SL1 & SL2 - Arm Mount on Metal Pole.



Metal Light Pole



Garage over Entrance



TYPE SL5

Symbol	Qty	Label	Description	Lum. Watts	BUG Rating
	1	TYPE SL1	120W, 5K, T3, Cut-Off, Area Light, Bronze, 30/AFG	120	B3-U3-G3
	5	TYPE SL2	120W, 5K, T5, Cut-Off/Area Light, Bronze, 30/AFG	120	B4-U2-G2
	14	TYPE SL3	28W, 5K, Trellis Gate	28.15	B2-U2-G1
	14	TYPE SL5	29W, 5K, Wall Pack	30.3	B1-U1-G1

Lighting to be supplied by Insolution Products LLC.
 Contact: Jim Rupp - jim.rupp@insolutionproducts.com - 317-372-8947
 Light Fixtures to be received and unloaded and stored on-site by Electrical Contractor
 or as directed by Owner.

1. Types SL1, SL2 - Dark Sky Optic for Giare control.
2. Concrete foundations designed by others for Light Poles.
3. DLC Compliant, LED is specified for Utility Energy Incentives where available.
4. Light Fixture metal finishes are painted Dark Bronze.
5. Correlated Color Temp is 5000K.
6. Area Lighting SL1 and SL2 mounted on 30" Metal pole w/Base Cover, painted Dark Bronze.
7. This Sheet No Scale.

Label	Avg	Max	Min	Max/Min	# Pts
Copy_Ground Footcandle 1	0.65	9.29	0.00	N.A.	562
Copy_V-PROP footcandle 5	0.04	0.28	0.00	N.A.	176

Label	Area	Total Watts	LPD
Luminaire Power Density	342740	1538.301	0.004

Luminaire Label	X	Y	Z	Orient	Tilt
1	20209.93	10075.65	30	90	0
3	20352.41	10077.04	30	90	0
29	20633.14	10353.59	30	270.133	0
33	20703.59	10432.22	30	270	0
73	20488.84	10076.24	30	90	0
74	20225.27	10125.69	9	0	0
77	20185.14	10172.22	9	0	0
78	20385.87	10170.25	9	0	0
80	20181.45	10266.55	9	0	0
81	20187.76	10359.74	9	0	0
82	20360.65	10361.5	9	0	0
85	20385.70	10361.5	9	0	0
87	20520.94	10406.73	9	0	0
114	20559.26	10399.87	9	0	0
124	20665.00	10265.41	9	0	0
125	20665.00	10265.41	9	0	0
126	20521.30	10124.75	9	0	0
127	20228.78	10407.32	9	90.912	0
129	20346.31	10407.67	10	90	0
132	20589.43	10250.87	30	0	0
133	20189.49	10324.53	10	180	0
134	20188.03	10201.14	10	180	0
139	20132.29	10248.01	10	0	0
140	20132.29	10248.01	10	0	0
141	20132.29	10248.01	10	0	0
142	20132.30	10314.83	10	0	0
143	20269.87	10396.64	10	90	0
144	20473.67	10396.41	10	90	0
145	20400.65	10408.67	10	90	0
146	20567.54	10407.59	10	0	0
147	20469.60	10135.36	10	270	0
148	20412.30	10122.80	10	270	0
149	20289.29	10135.96	10	270	0

Luminaire Location Summary

Caliber at Voyager
 Lighting Details

Drawn By: Various
 Checked By: JLR
 Date: 3/17/2019
 Scale: NTS

#	Date	Comments
1	3/15/19	Lighting Update

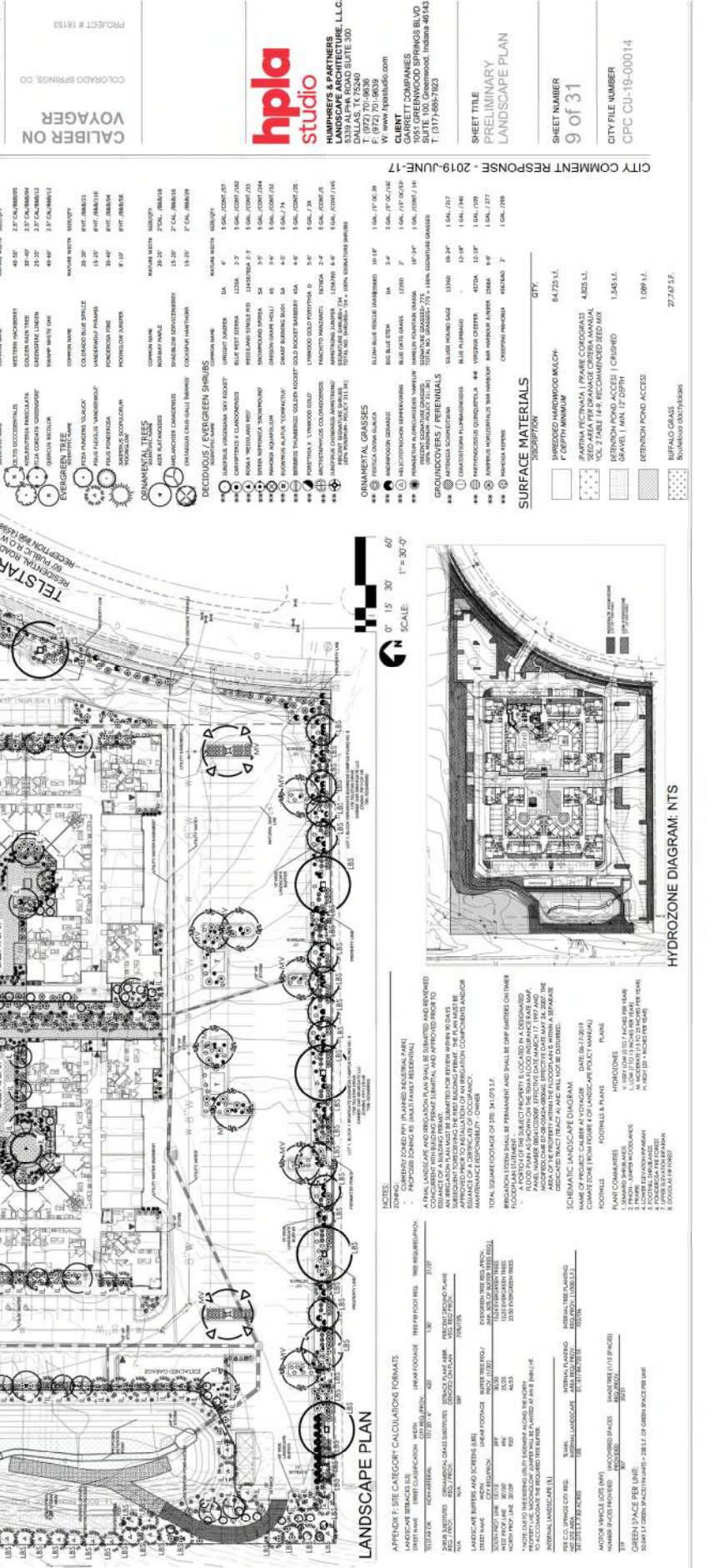
FIGURE 1

hpla studio
HUMPHREYS & PARTNERS
ARCHITECTURE & PLANNING, L.L.C.
5330 WALTON ROAD, SUITE 300
DALLAS, TX 75240
P: (972) 701-9439
F: (972) 701-9438
W: www.hplastudio.com

CLIENT
GARRETT COMPANIES
3503 HALLS ROAD
SUITE 100, Greenwood, Indiana 46143
T: (317) 686-7923

SHEET TITLE
PRELIMINARY
LANDSCAPE PLAN

SHEET NUMBER
9 of 31
CITY FILE NUMBER
CPC CU-19-00014



- PRELIMINARY PLANT LEGEND**
- TREES**
SHADE TREE
MINIATURE TREE
- SHRUBS**
SWEET WOODRUFF
GOLDEN YUKON TREE
GERANIUM LINUM
WINTER WERTHEIS
COLLAGIC BLUE BRIDGE
WICKS VIBURNUM
KNOX HOLE
WINTER WERTHEIS
WINTER WERTHEIS
- PERENNIALS**
LANTANA
LANTANA
LANTANA
LANTANA
LANTANA
LANTANA
LANTANA
LANTANA
LANTANA
LANTANA
- ORNAMENTAL GRASSES**
LANTANA
LANTANA
LANTANA
LANTANA
LANTANA
LANTANA
LANTANA
LANTANA
LANTANA
LANTANA
- GROUNDCOVERS / PERENNIALS**
LANTANA
LANTANA
LANTANA
LANTANA
LANTANA
LANTANA
LANTANA
LANTANA
LANTANA
LANTANA
- SURFACE MATERIALS**
UNGRADED HARDWOOD MULCH
P. DEPTH MINIMUM
PARKING PAVEMENT
PAVING CEMENT
RETENTION POND ACCESS (CRUSHED)
GRAVEL (MIN. 12" DEPTH)
RETENTION POND ACCESS
IRREGULAR GRASS
BUSHWOOD DISTRICTS

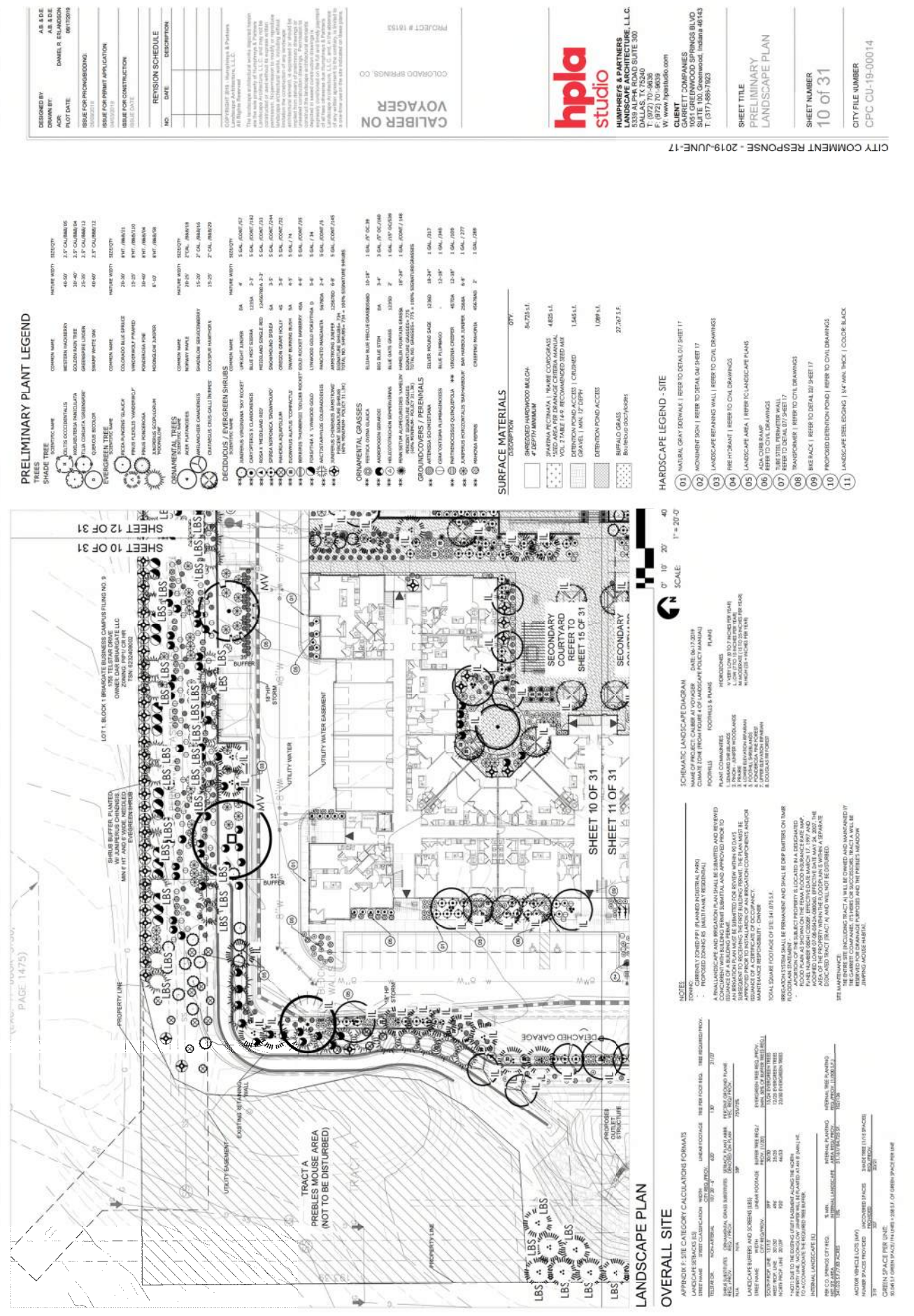
LANDSCAPE PLAN

NOTES:
1. UNGRADED HARDWOOD MULCH
2. P. DEPTH MINIMUM
3. PARKING PAVEMENT
4. PAVING CEMENT
5. RETENTION POND ACCESS (CRUSHED)
6. GRAVEL (MIN. 12" DEPTH)
7. RETENTION POND ACCESS
8. IRREGULAR GRASS
9. BUSHWOOD DISTRICTS

APPENDIX E: SITE CATEGORY CALCULATION FORMATS
LANDSCAPE STRATEGIES: ...
TOTAL SITE: ...
TOTAL GREEN SPACE: ...

HYDROZONE DIAGRAM: NTS

FIGURE 1



DESIGNED BY AS & D
DRAWN BY AME & S
PLOT DATE 08/10/2019
PROJECT NAME 1475
ISSUE FOR PERMIT APPLICATION
ISSUE FOR CONSTRUCTION
ISSUE DATE

- PRELIMINARY PLANT LEGEND**
- TREES
SHADE TREE
DECIDUOUS
EVERGREEN

REVISION SCHEDULE

NO.	DATE	DESCRIPTION

REVISION SCHEDULE

NO.	DATE	DESCRIPTION

PLANT LEGEND

COMMON NAME	SCIENTIFIC NAME	HEIGHT	ZONE

SURFACE MATERIALS

DESCRIPTION	SCALE

- HARDSCAPE LEGEND - SITE**
- NATURAL GRAY SIDEWALK | REFER TO DETAIL 01 SHEET 17
 - MONUMENT SIGN | REFER TO DETAIL 04 SHEET 17
 - LANDSCAPE RETAINING WALL | REFER TO CIVIL DRAWINGS
 - PRE-DRAIN | REFER TO CIVIL DRAWINGS
 - LANDSCAPE AREA | REFER TO CIVIL DRAWINGS
 - PERIMETER WALL | REFER TO CIVIL DRAWINGS
 - TRANSFORMER | REFER TO CIVIL DRAWINGS
 - BASE BACK | REFER TO DETAIL 02 SHEET 17
 - PROPOSED DIRECTION FLOW | REFER TO CIVIL DRAWINGS
 - LANDSCAPE BEELEDGING 1/4" MIN THICK | COLDF BLACK

NOTE:

- CURRENTLY ZONED BY PLANNED INDUSTRIAL PARK ZONING
- FLOODING PLANS SHALL BE PREPARED AND APPROVED PRIOR TO CONSTRUCTION WITH ALL LOCAL, STATE AND FEDERAL AGENCIES CONCERNED WITH FLOODING REGULATIONS AND APPROVED PRIOR TO ANY CONSTRUCTION.
- ALL BRIDGE PLANS SHALL BE PREPARED FOR REVIEW WITHIN 90 DAYS OF THE DATE OF THIS PLAN.
- PERMITTING AGENCIES SHALL BE NOTIFIED OF ANY CHANGES TO THIS PLAN.
- ALL SQUARE FOOTAGE OF 500 SQ FT OR MORE SHALL BE MAINTAINED AND SHALL BE DEDICATED TO THE PUBLIC USE OF THE CITY OF DALLAS.
- PERMITS SHALL BE OBTAINED FOR ALL WORK TO BE PERFORMED ON THE SITE.
- THE ENTIRE SITE INCLUDING TRACT A SHALL BE OWNED AND MAINTAINED BY THE DEVELOPER OR HIS SUCCESSORS AND THE CITY OF DALLAS SHALL BE RESPONSIBLE FOR MAINTENANCE OF THE TRACT.

OVERALL SITE

APPROXIMATE CATEGORY CALCULATION FORMATS

TRAFFIC	NON-VEHICULAR	VEHICULAR	LINEAR FOOTAGE	NET PER FOOT EQD.	TREE EQUIVALENCY

GREEN SPACE PER UNIT: 1.50 SQ FT PER UNIT (BASED ON 1,000 SQ FT OF GREEN SPACE PER UNIT)

VOYAGER

hpla studio

HUMPHREYS & PARTNERS ARCHITECTURE, L.L.C.
3300 WALLEN ROAD, SUITE 300
DALLAS, TX 75240
P: (972) 701-9839
F: (972) 701-9838
W: www.hplastudio.com

CLIENT
GARRETT COMPANIES
3300 WALLEN ROAD, SUITE 300
DALLAS, TX 75240
T: (972) 688-7923

SHEET TITLE
PRELIMINARY
LANDSCAPE PLAN

SHEET NUMBER
10 of 31

CITY FILE NUMBER
CPC CU-19-00014

FIGURE 1

DESIGNED BY AS & E
DRAWN BY AS & E
DATE DANIEL R. ENLADRON
PROJECT NO. 08170388
DATE
PROJECT NO. 08170388
DATE
PROJECT NO. 08170388
DATE

NO.	DATE	DESCRIPTION

REVISION SCHEDULE
NO.
DATE
DESCRIPTION

DESIGNED BY AS & E
DRAWN BY AS & E
DATE DANIEL R. ENLADRON
PROJECT NO. 08170388
DATE
PROJECT NO. 08170388
DATE

CALIBER ON
VOYAGER
PROJECT # 08153

hpla studio
HUMPHREYS & PARTNERS
LANDSCAPE ARCHITECTURE, L.L.C.
3030 CALLE GALERIE, SUITE 300
DALLAS, TX 75240
T: (972) 701-5839
F: (972) 701-5839
W: www.hplastudio.com

CLIENT
GARRETT COMPANIES
2000 W. WOODWAY
SUITE 100, GREENWOOD, INDIANA 46143
T: (317) 688-7923

SHEET TITLE
PRELIMINARY
LANDSCAPE PLAN

SHEET NUMBER
11 of 31
CITY FILE NUMBER
CPC CU-19-00014

CITY COMMENT RESPONSE - 2019-JUNE-17

PRELIMINARY PLANT LEGEND

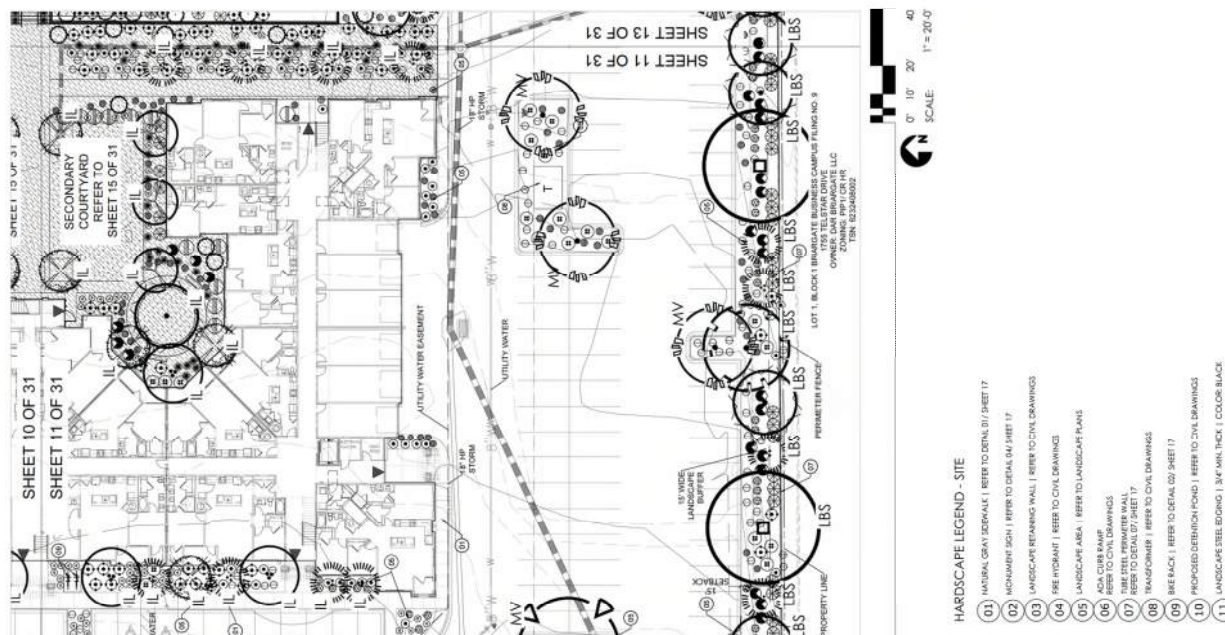
TREES	SHADE TREES	PERENNIALS	GRASSES	GROUNDCOVERS / PERENNIALS	PERENNIALS	GROUNDCOVERS	PERENNIALS
20' CALIFORNIA	20' CALIFORNIA	48-96"	2-2' CALIFORNIA	12-24"	12-24"	2-2' CALIFORNIA	12-24"

COMMON NAME	SCIENTIFIC NAME	HEIGHT	CULTURE
WESTERN HAZELBERRY	OSYRIS ALBIFLORA	8-10'	100% SUNSHADE ORNAMENTAL
GOLDEN HORN TREE	FRAXINUS PYRIFOLIA	20-25'	100% SUNSHADE ORNAMENTAL
SHRIMP WHITE OAK	QUERCUS LAEVIS	20-25'	100% SUNSHADE ORNAMENTAL
GRAND OAK	QUERCUS MAACRA	20-25'	100% SUNSHADE ORNAMENTAL
WINDY PINE	PINUS RESINOSA	20-25'	100% SUNSHADE ORNAMENTAL

COMMON NAME	SCIENTIFIC NAME	HEIGHT	CULTURE
ORNAMENTAL GRASSES	POEYSSONIA	4-6'	100% SUNSHADE ORNAMENTAL
PERENNIALS	PERENNIALS	12-24"	100% SUNSHADE ORNAMENTAL
GROUNDCOVERS	GROUNDCOVERS	2-4"	100% SUNSHADE ORNAMENTAL

SURFACE MATERIALS

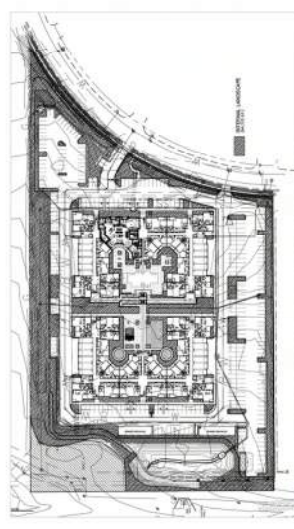
DESCRIPTION	QTY
SPRINKLED HAZARDWOOD MULCH	84,725 LL
SPARTAN PECTINATA / FRASER CEDAR/GRASS	4,825 LL
VOL. 2 TABLE 14.9 RECOMMENDED BED MAK	1,545 SL
RETENTION POND ACCESS CROUCHED	1,039 FL
RETENTION POND ACCESS	27,767 S.F.



LANDSCAPE PLAN
OVERALL SITE

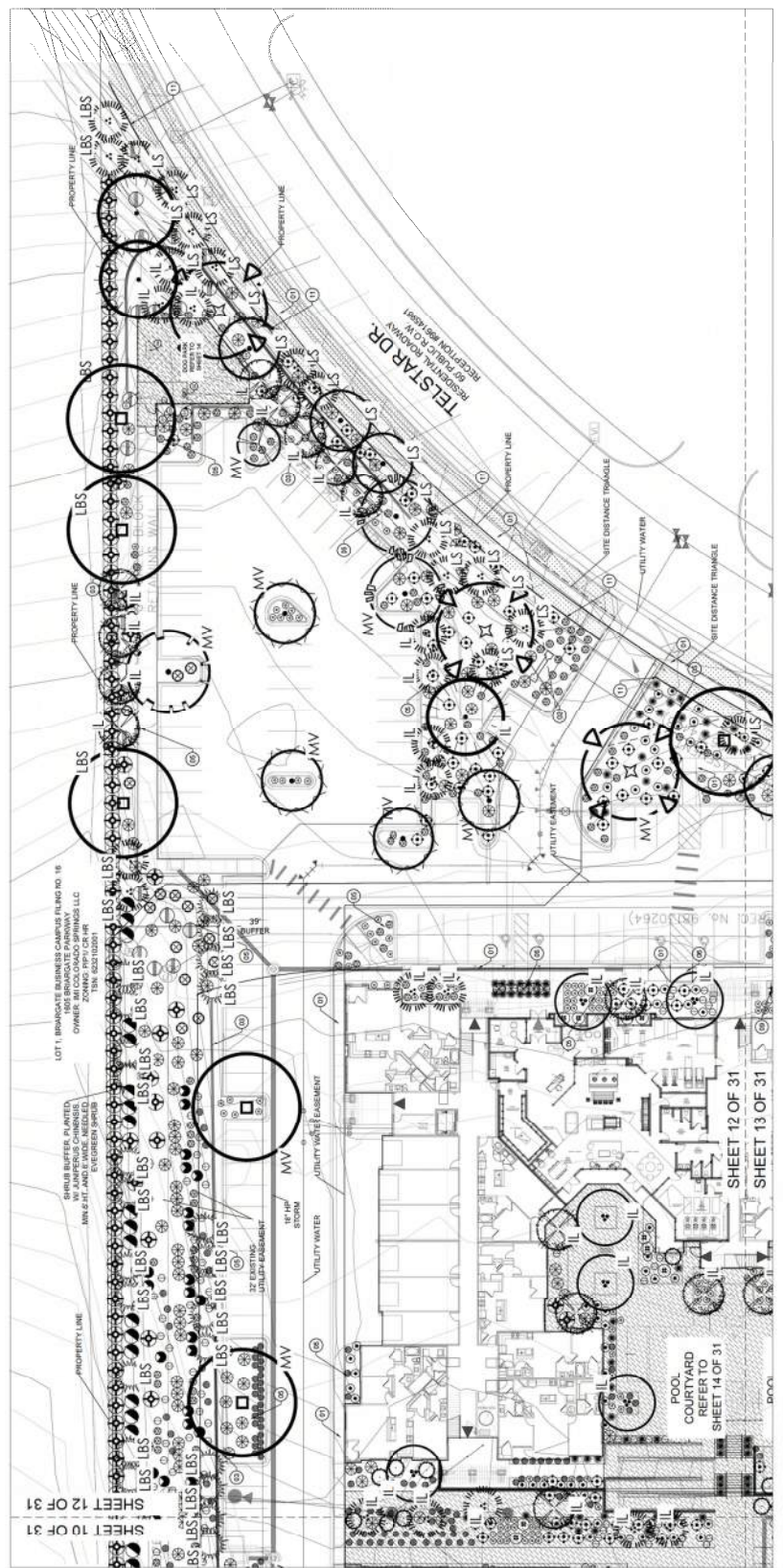


- HARDSCAPE LEGEND - SITE**
- 01 MATERIAL GRAY SEDAWAY | REFER TO DETAIL 01 / SHEET 17
 - 02 MICHIGAN LIGHT | REFER TO DETAIL 02 / SHEET 17
 - 03 LANDSCAPE RETAINING WALL | REFER TO CIVIL DRAWINGS
 - 04 USE HYDRANT | REFER TO CIVIL DRAWINGS
 - 05 LANDSCAPE AREA | REFER TO LANDSCAPE PLANS
 - 06 ADA CURB RAMP
 - 07 TIRE STEEL PERIMETER WALL
 - 08 BRICK CONCRETE | REFER TO CIVIL DRAWINGS
 - 09 BREEZE BLOCK | REFER TO DETAIL 02 / SHEET 17
 - 10 PRECAST RETENTION POND | REFER TO CIVIL DRAWINGS
 - 11 LANDSCAPE ISLE BEDDING | 3/4" MIN. THICK | COLOR: BLACK



INTERNAL LANDSCAPE DIAGRAM: N.T.S

FIGURE 1



LANDSCAPE PLAN
OVERALL SITE

SCALE: 1" = 20' 0"

PRELIMINARY PLANT LEGEND

TREES	SHRUBS	PERENNIALS	GROUNDCOVERS	PERENNIALS	SURFACE MATERIALS
<ul style="list-style-type: none"> 1. GORGEA FRAXINIFLORA 2. QUERCUS OBLONGIFOLIA 3. QUERCUS LAEVOLOBATA 4. QUERCUS LAEVOLOBATA 5. QUERCUS LAEVOLOBATA 6. QUERCUS LAEVOLOBATA 7. QUERCUS LAEVOLOBATA 8. QUERCUS LAEVOLOBATA 9. QUERCUS LAEVOLOBATA 10. QUERCUS LAEVOLOBATA 11. QUERCUS LAEVOLOBATA 12. QUERCUS LAEVOLOBATA 13. QUERCUS LAEVOLOBATA 14. QUERCUS LAEVOLOBATA 15. QUERCUS LAEVOLOBATA 16. QUERCUS LAEVOLOBATA 17. QUERCUS LAEVOLOBATA 18. QUERCUS LAEVOLOBATA 19. QUERCUS LAEVOLOBATA 20. QUERCUS LAEVOLOBATA 21. QUERCUS LAEVOLOBATA 22. QUERCUS LAEVOLOBATA 23. QUERCUS LAEVOLOBATA 24. QUERCUS LAEVOLOBATA 25. QUERCUS LAEVOLOBATA 26. QUERCUS LAEVOLOBATA 27. QUERCUS LAEVOLOBATA 28. QUERCUS LAEVOLOBATA 29. QUERCUS LAEVOLOBATA 30. QUERCUS LAEVOLOBATA 	<ul style="list-style-type: none"> 1. QUERCUS LAEVOLOBATA 2. QUERCUS LAEVOLOBATA 3. QUERCUS LAEVOLOBATA 4. QUERCUS LAEVOLOBATA 5. QUERCUS LAEVOLOBATA 6. QUERCUS LAEVOLOBATA 7. QUERCUS LAEVOLOBATA 8. QUERCUS LAEVOLOBATA 9. QUERCUS LAEVOLOBATA 10. QUERCUS LAEVOLOBATA 11. QUERCUS LAEVOLOBATA 12. QUERCUS LAEVOLOBATA 13. QUERCUS LAEVOLOBATA 14. QUERCUS LAEVOLOBATA 15. QUERCUS LAEVOLOBATA 16. QUERCUS LAEVOLOBATA 17. QUERCUS LAEVOLOBATA 18. QUERCUS LAEVOLOBATA 19. QUERCUS LAEVOLOBATA 20. QUERCUS LAEVOLOBATA 21. QUERCUS LAEVOLOBATA 22. QUERCUS LAEVOLOBATA 23. QUERCUS LAEVOLOBATA 24. QUERCUS LAEVOLOBATA 25. QUERCUS LAEVOLOBATA 26. QUERCUS LAEVOLOBATA 27. QUERCUS LAEVOLOBATA 28. QUERCUS LAEVOLOBATA 29. QUERCUS LAEVOLOBATA 30. QUERCUS LAEVOLOBATA 	<ul style="list-style-type: none"> 1. QUERCUS LAEVOLOBATA 2. QUERCUS LAEVOLOBATA 3. QUERCUS LAEVOLOBATA 4. QUERCUS LAEVOLOBATA 5. QUERCUS LAEVOLOBATA 6. QUERCUS LAEVOLOBATA 7. QUERCUS LAEVOLOBATA 8. QUERCUS LAEVOLOBATA 9. QUERCUS LAEVOLOBATA 10. QUERCUS LAEVOLOBATA 11. QUERCUS LAEVOLOBATA 12. QUERCUS LAEVOLOBATA 13. QUERCUS LAEVOLOBATA 14. QUERCUS LAEVOLOBATA 15. QUERCUS LAEVOLOBATA 16. QUERCUS LAEVOLOBATA 17. QUERCUS LAEVOLOBATA 18. QUERCUS LAEVOLOBATA 19. QUERCUS LAEVOLOBATA 20. QUERCUS LAEVOLOBATA 21. QUERCUS LAEVOLOBATA 22. QUERCUS LAEVOLOBATA 23. QUERCUS LAEVOLOBATA 24. QUERCUS LAEVOLOBATA 25. QUERCUS LAEVOLOBATA 26. QUERCUS LAEVOLOBATA 27. QUERCUS LAEVOLOBATA 28. QUERCUS LAEVOLOBATA 29. QUERCUS LAEVOLOBATA 30. QUERCUS LAEVOLOBATA 	<ul style="list-style-type: none"> 1. QUERCUS LAEVOLOBATA 2. QUERCUS LAEVOLOBATA 3. QUERCUS LAEVOLOBATA 4. QUERCUS LAEVOLOBATA 5. QUERCUS LAEVOLOBATA 6. QUERCUS LAEVOLOBATA 7. QUERCUS LAEVOLOBATA 8. QUERCUS LAEVOLOBATA 9. QUERCUS LAEVOLOBATA 10. QUERCUS LAEVOLOBATA 11. QUERCUS LAEVOLOBATA 12. QUERCUS LAEVOLOBATA 13. QUERCUS LAEVOLOBATA 14. QUERCUS LAEVOLOBATA 15. QUERCUS LAEVOLOBATA 16. QUERCUS LAEVOLOBATA 17. QUERCUS LAEVOLOBATA 18. QUERCUS LAEVOLOBATA 19. QUERCUS LAEVOLOBATA 20. QUERCUS LAEVOLOBATA 21. QUERCUS LAEVOLOBATA 22. QUERCUS LAEVOLOBATA 23. QUERCUS LAEVOLOBATA 24. QUERCUS LAEVOLOBATA 25. QUERCUS LAEVOLOBATA 26. QUERCUS LAEVOLOBATA 27. QUERCUS LAEVOLOBATA 28. QUERCUS LAEVOLOBATA 29. QUERCUS LAEVOLOBATA 30. QUERCUS LAEVOLOBATA 	<ul style="list-style-type: none"> 1. QUERCUS LAEVOLOBATA 2. QUERCUS LAEVOLOBATA 3. QUERCUS LAEVOLOBATA 4. QUERCUS LAEVOLOBATA 5. QUERCUS LAEVOLOBATA 6. QUERCUS LAEVOLOBATA 7. QUERCUS LAEVOLOBATA 8. QUERCUS LAEVOLOBATA 9. QUERCUS LAEVOLOBATA 10. QUERCUS LAEVOLOBATA 11. QUERCUS LAEVOLOBATA 12. QUERCUS LAEVOLOBATA 13. QUERCUS LAEVOLOBATA 14. QUERCUS LAEVOLOBATA 15. QUERCUS LAEVOLOBATA 16. QUERCUS LAEVOLOBATA 17. QUERCUS LAEVOLOBATA 18. QUERCUS LAEVOLOBATA 19. QUERCUS LAEVOLOBATA 20. QUERCUS LAEVOLOBATA 21. QUERCUS LAEVOLOBATA 22. QUERCUS LAEVOLOBATA 23. QUERCUS LAEVOLOBATA 24. QUERCUS LAEVOLOBATA 25. QUERCUS LAEVOLOBATA 26. QUERCUS LAEVOLOBATA 27. QUERCUS LAEVOLOBATA 28. QUERCUS LAEVOLOBATA 29. QUERCUS LAEVOLOBATA 30. QUERCUS LAEVOLOBATA 	

PERENNIALS

COMMON NAME	SYMBOL	QUANTITY	DESCRIPTION
SHRUBBERY	SYMBOL	QUANTITY	DESCRIPTION
GROUND COVER	SYMBOL	QUANTITY	DESCRIPTION
PERENNIAL	SYMBOL	QUANTITY	DESCRIPTION

GROUNDCOVERS / PERENNIALS

COMMON NAME	SYMBOL	QUANTITY	DESCRIPTION
SHRUBBERY	SYMBOL	QUANTITY	DESCRIPTION
GROUND COVER	SYMBOL	QUANTITY	DESCRIPTION
PERENNIAL	SYMBOL	QUANTITY	DESCRIPTION

- HARDSCAPE LEGEND - SITE**
- 01 NATURAL GRASS SIDEWALK | REFER TO DETAIL 017 SHEET 17
 - 02 HOURLIGHT SOIL | REFER TO DETAIL 041 SHEET 17
 - 03 LANDSCAPE RETAINING WALL | REFER TO CIVIL DRAWINGS
 - 04 PERFORATED | REFER TO CIVIL DRAWINGS
 - 05 LANDSCAPE AREA | REFER TO LANDSCAPE PLANS
 - 06 ADA CURB RAMP | REFER TO CIVIL DRAWINGS
 - 07 REFER TO DETAIL 071 SHEET 17
 - 08 TRANSFORMER | REFER TO CIVIL DRAWINGS
 - 09 BEERACK | REFER TO DETAIL 031 SHEET 17
 - 10 PROPOSED ORENDON POND | REFER TO CIVIL DRAWINGS
 - 11 LANDSCAPE TABLE BENCHES | 3/4" MIN. THICK | COLOR: BLACK

DESIGNED BY	AS & DE
DRAWN BY	AS & DE
DATE	08/10/2019
PROJECT #	18153
CLIENT	VOYAGER
LOCATION	COLORADO SPRINGS, CO

hpla studio

HUMPHREYS & PARTNERS
LANDSCAPE ARCHITECTS, L.L.C.
DALLAS, TX 75240
F: (972) 701-9839
W: www.hplastudio.com

CLIENT
GARRETT COMPANIES
3000 GARDEN VIEW BLVD
SUITE 100, GREENWOOD, INDIANA 46143
T: (317) 689-7923

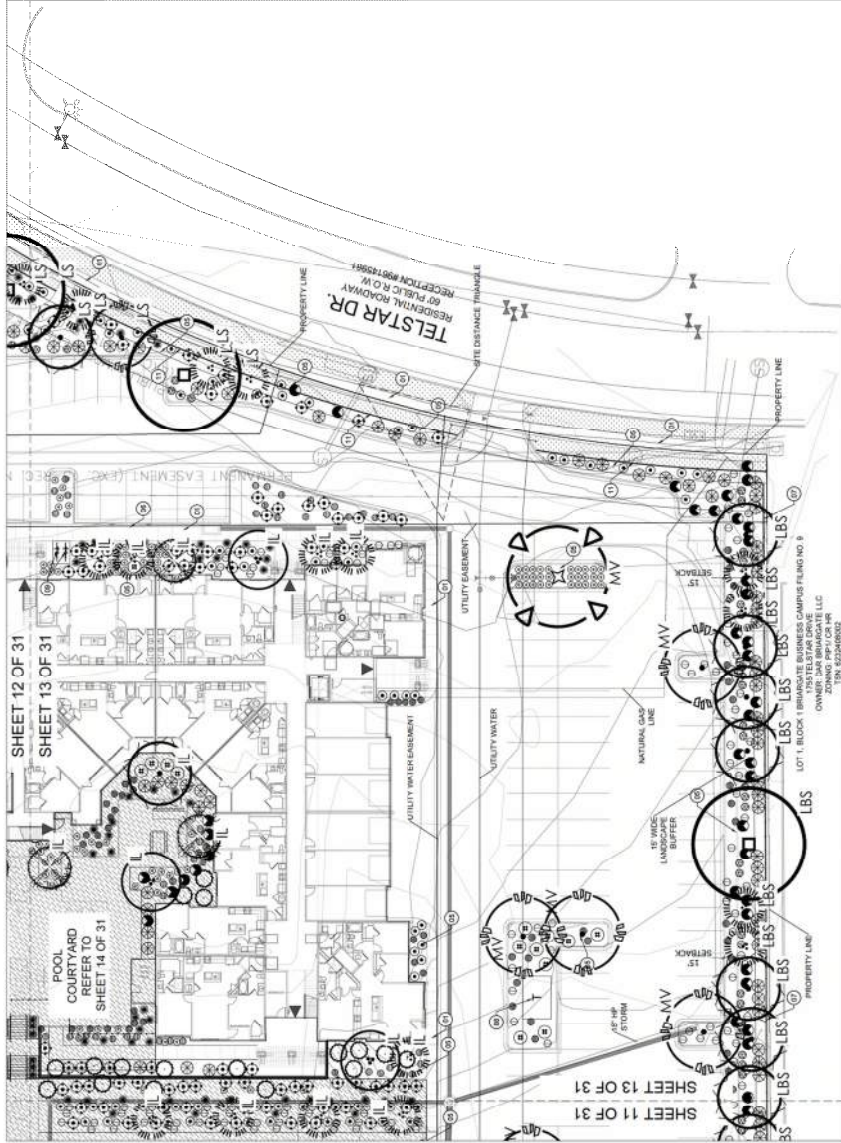
SHEET TITLE
PRELIMINARY
LANDSCAPE PLAN

SHEET NUMBER
12 of 31

CITY FILE NUMBER
CPC CU-19-00014

FIGURE 1

CITY COMMENT RESPONSE - 2019-JUNE-17



LANDSCAPE PLAN
OVERALL SITE

PRELIMINARY PLANT LEGEND

SCIENTIFIC NAME	COMMON NAME	PLANT HEIGHT	PLANT WIDTH	PLANT SPACING
SHADE TREE				
ACER PLATANUS	PLATANUS	40-50'	24"	15'-20'
FRAXINUS	WHITE OAK	20-30'	18"	10'-15'
QUERCUS	WHITE OAK	20-30'	18"	10'-15'
EVERGREEN TREE				
YUCCA	YUCCA	4-6'	12"	4'-6'
AGAVE	AGAVE	4-6'	12"	4'-6'
SHRUBS				
BUXUS	LAUREL OAK	4-6'	12"	4'-6'
SPYRUEA	SPYRUEA	4-6'	12"	4'-6'
DRYMONIA	DRYMONIA	4-6'	12"	4'-6'
PERENNIALS				
SPERMATOPHYTES				
ANGIOSPERMS				
MONOCOTYLEDONS				
ORNAMENTAL GRASSES				
PETALOSTEMUM	PETALOSTEMUM	10-15'	12"	4'-6'
POA	POA	4-6'	12"	4'-6'
STYRACIS	STYRACIS	4-6'	12"	4'-6'
SPERMATOPHYTES				
ANGIOSPERMS				
MONOCOTYLEDONS				
GROUNDCOVERS / PERENNIALS				
SPERMATOPHYTES				
ANGIOSPERMS				
MONOCOTYLEDONS				
ORNAMENTAL GRASSES				

DESIGNED BY: AS & DE
DRAWN BY: AS & DE
AOR: DANIEL R. ENLADRON
PLOT DATE: 08/10/2019
REUSE FOR PHOTOBUILDING
REUSE FOR PHOTOBUILDING
REUSE FOR PHOTOBUILDING
REUSE FOR CONSTRUCTION
REVISION SCHEDULE
NO. DATE DESCRIPTION

VOYAGER
CALIBER ON
PROJECT # 19153
COLORADO SPRINGS, CO
hpla studio
HUMPHREYS & PARTNERS
DALLAS, TX 75240
F: (972) 701-8839
T: (972) 688-7923
W: www.hplastudio.com
CLIENT: GARRETT COMPANIES
SUITE 100, GREENWOOD, INDIANA 46143
SHEET TITLE: PRELIMINARY LANDSCAPE PLAN
SHEET NUMBER: 13 of 31
CITY FILE NUMBER: CPC CU-19-00014

THESE PLANTINGS ARE INTENDED TO BE PLANTED AT THE TIME OF CONSTRUCTION. PLANTINGS NOT SHOWN ON THIS PLAN ARE TO BE PLANTED AT THE TIME OF CONSTRUCTION. PLANTINGS NOT SHOWN ON THIS PLAN ARE TO BE PLANTED AT THE TIME OF CONSTRUCTION. PLANTINGS NOT SHOWN ON THIS PLAN ARE TO BE PLANTED AT THE TIME OF CONSTRUCTION.

ORNAMENTAL GRASSES
PETALOSTEMUM
POA
STYRACIS
SPERMATOPHYTES
ANGIOSPERMS
MONOCOTYLEDONS
GROUNDCOVERS / PERENNIALS
SPERMATOPHYTES
ANGIOSPERMS
MONOCOTYLEDONS
ORNAMENTAL GRASSES

DESCRIPTION	QTY
SHRUBBED HARDWOOD MULCH - 4" DEPTH MINIMUM	84,725 S.F.
SPARTINA PECTINATA PRABE CORDGRASS	4,825 S.F.
DEFENTION POND ACCESS CRUSHED GRAVEL 1/4" IN. 1" DEPTH	1,545 S.F.
DEFENTION POND ACCESS	1,089 S.F.
BUFFALO GRASS	27,767 S.F.

HARDSCAPE LEGEND - SITE
 01 NATURAL GRASS STRIPWAY | REFER TO DETAIL 01 SHEET 17
 02 MONUMENT SIGN | REFER TO DETAIL 04 SHEET 17
 03 LANDSCAPE RETAINING WALL | REFER TO CIVIL DRAWINGS
 04 FIRE HYDRANT | REFER TO CIVIL DRAWINGS
 05 LANDSCAPE AREA | REFER TO LANDSCAPE PLANS
 06 ADA CURB RAMP
 07 TUBE STEEL PERIMETER WALL
 08 TRANSFORMER | REFER TO CIVIL DRAWINGS
 09 BEE BACK | REFER TO DETAIL 02 SHEET 17
 10 PROPOSED DETENTION POND | REFER TO CIVIL DRAWINGS
 11 LANDSCAPE STEEL EDGING | 1/4" MIN. THICK | COLOR: BLACK

FIGURE 1

DESIGNED BY AS & D
 DRAWN BY AS & D
 AOR DANIEL S. ELKHORN
 PLOT DATE 08/17/2019

ISSUE FOR PERMIT APPLICATION
 ISSUE FOR CONSTRUCTION
 ISSUE DATE

REVISION SCHEDULE
 NO. DATE DESCRIPTION

Copyright © 2019, Humphreys & Partners
 All Rights Reserved.

The information contained on these drawings was prepared by Humphreys & Partners, L.L.C. and may not be used for any other project without the written consent of Humphreys & Partners, L.L.C. and may not be used for any other project without the written consent of Humphreys & Partners, L.L.C. and may not be used for any other project without the written consent of Humphreys & Partners, L.L.C.

Project # 19153

VOYAGER
 CALIBER ON
 COLORADO SPRINGS, CO

hpla studio

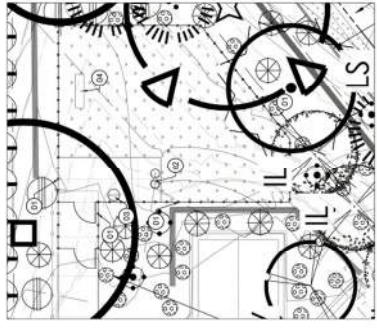
HUMPHREYS & PARTNERS
 LANDSCAPE ARCHITECTURE, L.L.C.
 5300 CAMP ROAD, SUITE 300
 DALLAS, TX 75240
 P: (972) 701-9839
 F: (972) 701-9839
 W: www.hplastudio.com

CLIENT
 GARRETT COMPANIES
 GARRETT COMPANIES BLVD
 SUITE 100, Greenwood, Indiana 46143
 T: (317) 689-7923

SHEET TITLE
 PRELIMINARY
 LANDSCAPE PLAN

SHEET NUMBER
 14 of 31

CITY FILE NUMBER
 CPC CU-19-00014



LANDSCAPE PLAN
 DOG PARK
 SCALE: 1" = 10'-0"

- HARDSCAPE LEGEND - DOG PARK**
- 01 WIRE MESH DOG FENCE | REFER TO DETAIL 08/SHEET 17
 - 02 DOG WASHING STATION | BY: DOG-ON-FARMS.COM | PRODUCT #219 | COLOR: GREY
 - 03 DOG WASHING STATION | BY: DOG-ON-FARMS.COM | PRODUCT #201 | COLOR: GREY
 - 04 REBAR LANDSCAPE BENCH | FCING-SURFACES.COM

SURFACE MATERIALS

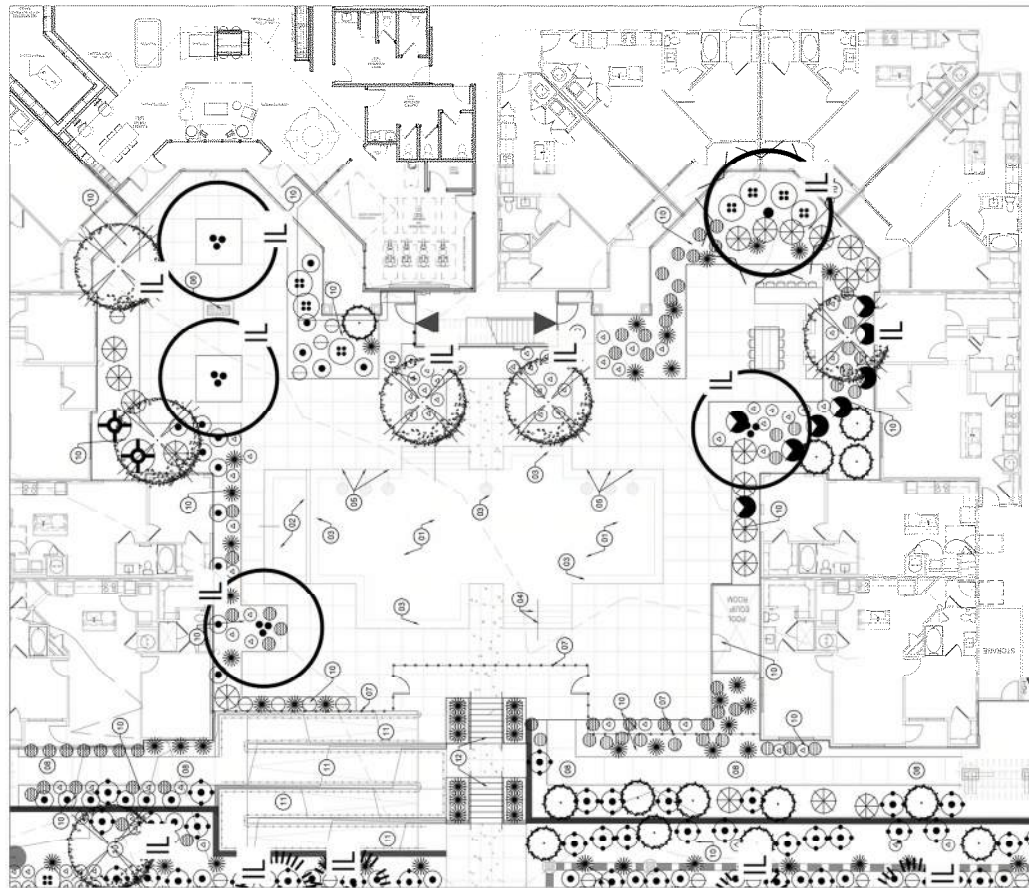
SURFACE MATERIALS	DESCRIPTION	QUANTITY
[Symbol]	4"X4" SCORED COLORED CONCRETE BY: DAVIS ARCHITECT	94.5 SF
[Symbol]	SHREDDED HARDWOOD MULCH BY: LOCAL SUPPLIER NOTE: INSTALL TO A 4" MIN. DEPTH	912.5 SF
[Symbol]	BUFFALO GRASS SEED	

- PRELIMINARY PLANT LEGEND**
- 01 PERMANENT TREES
 - 101 CALIFORNIA REDWOOD
 - 102 EVERGREEN TREE
 - 02 DECIDUOUS / EVERGREEN SHRUBS
 - 201 PINK ANDERSON BUCKLE
 - 202 AMERICAN VIRGINIA SLOE
 - 203 BLUE HESTER CLEMATIS
 - 204 AMERICAN VIRGINIA SLOE
 - 205 AMERICAN VIRGINIA SLOE
 - 03 PERENNIALS
 - 301 BLUE STAR
 - 302 BLUE STAR
 - 303 BLUE STAR
 - 304 BLUE STAR
 - 305 BLUE STAR
 - 04 ANNUALS / GRASSES
 - 401 BLUE STAR
 - 402 BLUE STAR
 - 403 BLUE STAR
 - 404 BLUE STAR
 - 405 BLUE STAR
 - 05 GROUNDCOVERS / PERENNIALS
 - 501 BLUE STAR
 - 502 BLUE STAR
 - 503 BLUE STAR
 - 504 BLUE STAR
 - 505 BLUE STAR
 - 06 TREES / SHRUBS / PERENNIALS
 - 601 BLUE STAR
 - 602 BLUE STAR
 - 603 BLUE STAR
 - 604 BLUE STAR
 - 605 BLUE STAR
 - 07 GROUNDCOVERS / PERENNIALS
 - 701 BLUE STAR
 - 702 BLUE STAR
 - 703 BLUE STAR
 - 704 BLUE STAR
 - 705 BLUE STAR
 - 08 ANNUALS / GRASSES
 - 801 BLUE STAR
 - 802 BLUE STAR
 - 803 BLUE STAR
 - 804 BLUE STAR
 - 805 BLUE STAR

- HARDSCAPE LEGEND - POOL COURTYARD**
- 01 FINISHING POOL (REFER TO POOL SHOP DRAWINGS) 1,292.5 SF
 - 02 INTERIOR FINISH (TWO COLOR BELLA BLUE TILE LINE TWO BY DALLAS.COM) | PRODUCT #1 144.5 SF
 - 03 INTERIOR FINISH (TWO COLOR BELLA BLUE TILE LINE TWO BY DALLAS.COM) | PRODUCT #2 144.5 SF
 - 04 INTERIOR FINISH (TWO COLOR BELLA BLUE TILE LINE TWO BY DALLAS.COM) | PRODUCT #3 144.5 SF
 - 05 INTERIOR FINISH (TWO COLOR BELLA BLUE TILE LINE TWO BY DALLAS.COM) | PRODUCT #4 144.5 SF
 - 06 INTERIOR FINISH (TWO COLOR BELLA BLUE TILE LINE TWO BY DALLAS.COM) | PRODUCT #5 144.5 SF
 - 07 INTERIOR FINISH (TWO COLOR BELLA BLUE TILE LINE TWO BY DALLAS.COM) | PRODUCT #6 144.5 SF
 - 08 INTERIOR FINISH (TWO COLOR BELLA BLUE TILE LINE TWO BY DALLAS.COM) | PRODUCT #7 144.5 SF
 - 09 INTERIOR FINISH (TWO COLOR BELLA BLUE TILE LINE TWO BY DALLAS.COM) | PRODUCT #8 144.5 SF
 - 10 INTERIOR FINISH (TWO COLOR BELLA BLUE TILE LINE TWO BY DALLAS.COM) | PRODUCT #9 144.5 SF
 - 11 INTERIOR FINISH (TWO COLOR BELLA BLUE TILE LINE TWO BY DALLAS.COM) | PRODUCT #10 144.5 SF
 - 12 INTERIOR FINISH (TWO COLOR BELLA BLUE TILE LINE TWO BY DALLAS.COM) | PRODUCT #11 144.5 SF
 - 13 INTERIOR FINISH (TWO COLOR BELLA BLUE TILE LINE TWO BY DALLAS.COM) | PRODUCT #12 144.5 SF
 - 14 INTERIOR FINISH (TWO COLOR BELLA BLUE TILE LINE TWO BY DALLAS.COM) | PRODUCT #13 144.5 SF
 - 15 INTERIOR FINISH (TWO COLOR BELLA BLUE TILE LINE TWO BY DALLAS.COM) | PRODUCT #14 144.5 SF
 - 16 INTERIOR FINISH (TWO COLOR BELLA BLUE TILE LINE TWO BY DALLAS.COM) | PRODUCT #15 144.5 SF

SURFACE MATERIALS

SURFACE MATERIALS	DESCRIPTION	QUANTITY
[Symbol]	4"X4" SCORED COLORED CONCRETE BY: DAVIS ARCHITECT	3,000.5 SF
[Symbol]	COLOR: NATURAL GRAY FINISH: MEDIUM ROOM REFER TO DETAIL 01/SHEET 17	
[Symbol]	2"X4" SCORED COLORED CONCRETE BY: DAVIS ARCHITECT	336.5 SF
[Symbol]	SHREDDED HARDWOOD MULCH BY: LOCAL SUPPLIER NOTE: INSTALL TO A 4" MIN. DEPTH	



LANDSCAPE PLAN
 POOL COURTYARD
 SCALE: 1" = 10'-0"

- HARDSCAPE LEGEND - POOL COURTYARD**
- 01 FINISHING POOL (REFER TO POOL SHOP DRAWINGS) 1,292.5 SF
 - 02 INTERIOR FINISH (TWO COLOR BELLA BLUE TILE LINE TWO BY DALLAS.COM) | PRODUCT #1 144.5 SF
 - 03 INTERIOR FINISH (TWO COLOR BELLA BLUE TILE LINE TWO BY DALLAS.COM) | PRODUCT #2 144.5 SF
 - 04 INTERIOR FINISH (TWO COLOR BELLA BLUE TILE LINE TWO BY DALLAS.COM) | PRODUCT #3 144.5 SF
 - 05 INTERIOR FINISH (TWO COLOR BELLA BLUE TILE LINE TWO BY DALLAS.COM) | PRODUCT #4 144.5 SF
 - 06 INTERIOR FINISH (TWO COLOR BELLA BLUE TILE LINE TWO BY DALLAS.COM) | PRODUCT #5 144.5 SF
 - 07 INTERIOR FINISH (TWO COLOR BELLA BLUE TILE LINE TWO BY DALLAS.COM) | PRODUCT #6 144.5 SF
 - 08 INTERIOR FINISH (TWO COLOR BELLA BLUE TILE LINE TWO BY DALLAS.COM) | PRODUCT #7 144.5 SF
 - 09 INTERIOR FINISH (TWO COLOR BELLA BLUE TILE LINE TWO BY DALLAS.COM) | PRODUCT #8 144.5 SF
 - 10 INTERIOR FINISH (TWO COLOR BELLA BLUE TILE LINE TWO BY DALLAS.COM) | PRODUCT #9 144.5 SF
 - 11 INTERIOR FINISH (TWO COLOR BELLA BLUE TILE LINE TWO BY DALLAS.COM) | PRODUCT #10 144.5 SF
 - 12 INTERIOR FINISH (TWO COLOR BELLA BLUE TILE LINE TWO BY DALLAS.COM) | PRODUCT #11 144.5 SF
 - 13 INTERIOR FINISH (TWO COLOR BELLA BLUE TILE LINE TWO BY DALLAS.COM) | PRODUCT #12 144.5 SF
 - 14 INTERIOR FINISH (TWO COLOR BELLA BLUE TILE LINE TWO BY DALLAS.COM) | PRODUCT #13 144.5 SF
 - 15 INTERIOR FINISH (TWO COLOR BELLA BLUE TILE LINE TWO BY DALLAS.COM) | PRODUCT #14 144.5 SF
 - 16 INTERIOR FINISH (TWO COLOR BELLA BLUE TILE LINE TWO BY DALLAS.COM) | PRODUCT #15 144.5 SF

SURFACE MATERIALS

SURFACE MATERIALS	DESCRIPTION	QUANTITY
[Symbol]	4"X4" SCORED COLORED CONCRETE BY: DAVIS ARCHITECT	3,000.5 SF
[Symbol]	COLOR: NATURAL GRAY FINISH: MEDIUM ROOM REFER TO DETAIL 01/SHEET 17	
[Symbol]	2"X4" SCORED COLORED CONCRETE BY: DAVIS ARCHITECT	336.5 SF
[Symbol]	SHREDDED HARDWOOD MULCH BY: LOCAL SUPPLIER NOTE: INSTALL TO A 4" MIN. DEPTH	

FIGURE 1

CITY COMMENT RESPONSE - 2019-JUNE-17

DESIGNED BY AS & E
 DRAWN BY AS & E
 AOR DANIEL R. ENLADRON
 PLOT DATE 08/10/2019

ISSUE FOR PHOTOBUILDING
 08/10/2019

ISSUE FOR CONSTRUCTION
 08/10/2019

REVISION SCHEDULE

NO.	DATE	DESCRIPTION

Copyright © 2019 Humphreys & Partners
 All Rights Reserved.
 The information contained on this drawing is the property of Humphreys & Partners, L.L.C. and may not be reproduced, stored in a retrieval system, or transmitted in any form or by any means, electronic, mechanical, photocopying, recording, or by any information storage and retrieval system, without the prior written permission of Humphreys & Partners, L.L.C. This drawing is intended for the use and benefit of the client and is not to be used for any other purpose without the prior written consent of Humphreys & Partners, L.L.C.

VOYAGER
 COLORADO SPRINGS, CO
 PROJECT # 19153

hpla studio
 HUMPHREYS & PARTNERS
 ARCHITECTS & PLANNERS, L.L.C.
 5300 ALPINE ROAD, SUITE 300
 DALLAS, TX 75240
 P: (972) 701-5639
 F: (972) 701-5639
 W: www.hplastudio.com

CLIENT
 GARRETT COMPANIES
 10000 GARRETT CENTER DRIVE
 SUITE 100, Greenwood, Indiana 46143
 T: (317) 68977923

SHEET TITLE
 PRELIMINARY
 LANDSCAPE PLAN

SHEET NUMBER
 15 of 31

CITY FILE NUMBER
 CPC CU-19-00014

CITY COMMENT RESPONSE - 2019-JUNE-17

PRELIMINARY PLANT LEGEND

- SECONDARY COURTYARD TREES**
- EVERGREEN TREE
 - WICKI PINUS 'BLACK' 20-30' 81% 08/002
 - COMMON NAME: COLORADO BLUE SPRUCE
 - ORNAMENTAL TREES
 - ALER PLANIFOLIOS 20-25' 1% 01/010
 - SHREVLAW SPONTANEOUS 12-20' 1% 01/010
 - COCKSPUR HAWTHORN 12-20' 1% 01/010
 - DECIDUOUS / EVERGREEN SHRUBS
 - INDIANA IRIDIUM 'UN' 10-12' 1% 01/010
 - SPIDA SPONCOUS 'SPONCOUS' 5-8' 1% 01/010
 - DOUGLAS BLACK 'COMACT' 20-25' 1% 01/010
 - HERNANDIA 'MAGNUS' 10-12' 1% 01/010
 - ORNAMENTAL GRASSES
 - MONDOGRASS 3-4' 1% 01/010
 - ALLEGATORIA 18-24" 1% 01/010
 - MINUTIFLORA 18-24" 1% 01/010
 - GROUNDCOVERS / PERENNIALS
 - SILVER MOON SAGE 12-20" 1% 01/010
 - RUPE PULSAR 12-20" 1% 01/010
 - VERNAL CRISPER 12-20" 1% 01/010
 - VERNAL CRISPER 12-20" 1% 01/010
 - VERNAL CRISPER 12-20" 1% 01/010
 - SURFACE MATERIALS
 - SHAGGED HARDWOOD PLANCH 1% 01/010
 - 1% 01/010

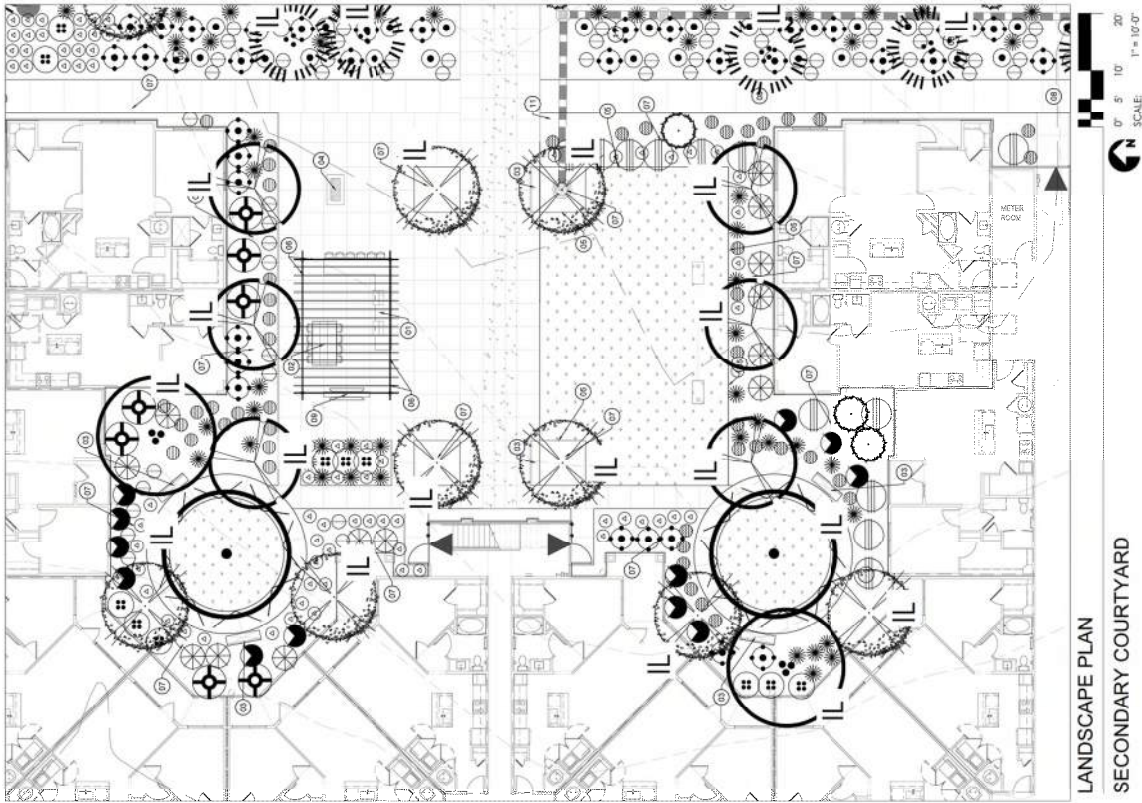
HARDSCAPE LEGEND - SECONDARY COURTYARD

- 01 BUILT-IN OUTDOOR KITCHEN W/ GAS GRILLS |
- 02 BUSH COMPARTMENT TABLE |
- 03 WOOD-LAMINATE BENCH | BY FORMS + SURFACES.COM
- 04 BUSH-FREE PPE |
- 05 LANDSCAPE STEEL EDGING | 3/4" MIN. THICK, COLOR: BLACK
- 06 OVERHEAD TRELLIS |
- 07 LANDSCAPE AREA | REFER TO LANDSCAPE PLANS
- 08 SEWERWALK | REFER TO CIVIL DRAWINGS
- 09 TELEVISION WALL |
- 10 DOWN HOLE | BY SHOCKS.COM
- 11 DOWN WATER PIPE | REFER TO CIVIL DRAWINGS
- 12 NOTE: ALL COURTYARD FURNISHINGS WILL BE DESIGNED BY THE INTERIOR ARCHITECT

SURFACE MATERIALS

SYMBOL	DESCRIPTION	QUANTITY
[Symbol]	4M SCORED COLORED CONCRETE BY DAVIS COLOR MATERIAL GRAY FINISH: MEDIUM BROOM	1,357 SF.
[Symbol]	2M SCORED COLORED CONCRETE BY DAVIS COLOR RED FINISH: MEDIUM BROOM	533 SF.
[Symbol]	BUFFALO GRASS SEED	348 SF.

NOTE: INSTALL TO A 4" MIN. DEPTH



LANDSCAPE PLAN
 SECONDARY COURTYARD

FIGURE 1

DESIGNED BY: A.B. & D.E.
 DRAWN BY: A.B. & D.E.
 AOR: DANIEL R. BLANDSON
 PLOT DATE: 06/17/2019

ISSUE FOR PROCEEDING:
 06/18/2019
 ISSUE FOR PERMIT APPLICATION:
 06/20/2019
 ISSUE FOR CONSTRUCTION:
 06/20/2019

NO.	DATE	DESCRIPTION

REVISION SCHEDULE
 NO. DATE DESCRIPTION

Copyright 2019 - Humphreys & Partners
 All Rights Reserved

This landscape architecture work, including plans, specifications, reports, and correspondence, is the property of Humphreys & Partners, L.L.C. and may not be reproduced, stored in a retrieval system, or transmitted in any form or by any means, electronic, mechanical, photocopying, recording, or otherwise, without the prior written permission. No permission is granted for reproduction or use of any part of this work for any purpose other than the construction of any landscape project as specifically described in the contract. This work is provided on the basis of preliminary drawings or information that has been provided to the architect. The architect makes no warranty, expressed or implied, for the use of this work for any purpose other than the construction of the project. The architect's liability is limited to the professional services provided in accordance with the contract documents and the applicable laws and regulations. The architect is not responsible for the construction of the project or the performance of the project. The architect's liability is limited to the professional services provided in accordance with the contract documents and the applicable laws and regulations. The architect is not responsible for the construction of the project or the performance of the project.

VOYAGER
 COLORADO SPRINGS, CO
 PROJECT # 18153

hpla studio

HUMPHREYS & PARTNERS
 LANDSCAPE ARCHITECTURE, L.L.C.
 SUITE 100, GREENWOOD, INDIANA 46143
 DALLAS, TX 75240
 F: (972) 701-9888
 W: www.hplastudio.com

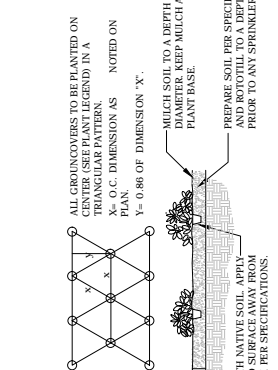
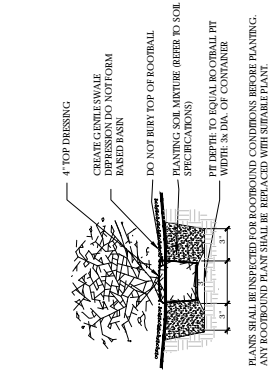
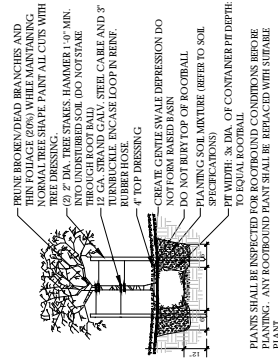
CLIENT
 GARRETT COMPANIES
 SUITE 100, GREENWOOD, INDIANA 46143
 T: (317) 886-7923

SHEET TITLE
 GENERAL LANDSCAPE
 & IRRIGATION DETAILS

SHEET NUMBER
 16 of 31

CITY FILE NUMBER
 CPC CU-19-00014

LANDSCAPE



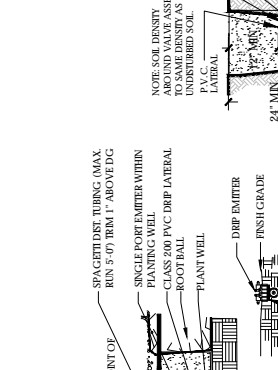
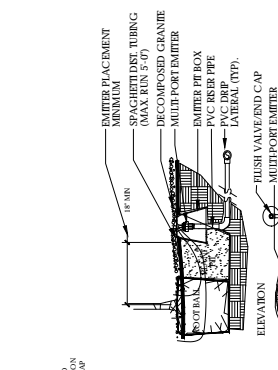
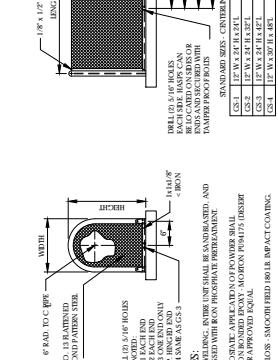
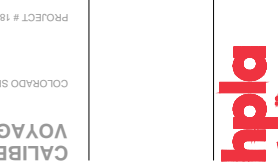
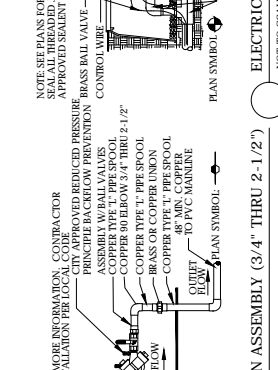
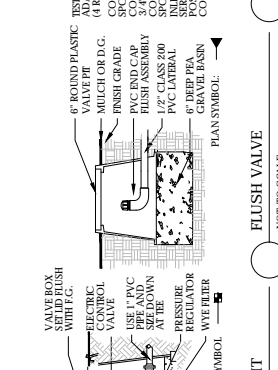
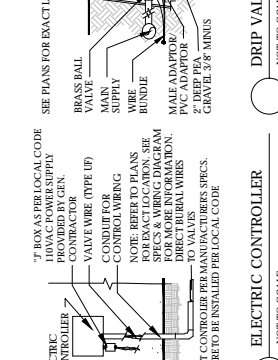
TREE PLANTING (AT-GRADE)
 NOT TO SCALE

SHRUB PLANTING (AT-GRADE)
 NOT TO SCALE

GROUNDCOVER PLANTING (AT-GRADE)
 NOT TO SCALE

IF PLAN AS PER LOCAL CODE PROVIDED BY GEN. CONTRACTOR
 VALVE WIRE (TYPE I/P)
 CONDUIT WIRING
 NOTE: REFER TO PLANS FOR SPECIFICATIONS AND WIRING DIAGRAM FOR MORE INFORMATION.
 TO VALVES, MAIN WIRING
 -ALL WIRE TO BE INSTALLED PER LOCAL CODE

IRRIGATION



"GUARDSHACK" SECURITY CAGE
 NOT TO SCALE

MULTI-PORT EMITTER & SINGLE-PORT EMITTER
 NOT TO SCALE

TRENCHING
 NOT TO SCALE

ELECTRIC REMOTE CONTROL VALVE
 NOT TO SCALE

FIGURE 1

DESIGNED BY:	AB & D E
DRAWN BY:	AB & D E
APPROVED BY:	DANIEL R. ENLANDSON
DATE:	06/17/2019
PROJECT NO.:	190000011
ISSUE FOR PROVISIONING:	
ISSUE FOR PERMIT APPLICATION:	
ISSUE FOR CONSTRUCTION:	
ISSUE DATE:	
NO.	REVISION SCHEDULE
DATE:	DESCRIPTION

COPYRIGHT 2019 by Humphreys & Partners Landscape Architecture, L.L.C. All Rights Reserved.

The landscape architect and/or its consultants, Humphreys & Partners Landscape Architecture, L.L.C. and its employees, shall not be held responsible for any errors or omissions in this drawing or any other documents prepared by the architect and/or its consultants, or for any consequences that may result from the use of this drawing or any other documents prepared by the architect and/or its consultants, or for any consequences that may result from the use of this drawing or any other documents prepared by the architect and/or its consultants, or for any consequences that may result from the use of this drawing or any other documents prepared by the architect and/or its consultants.

VOYAGER
CALIBER ON
COLORADO SPRINGS, CO
PROJECT # 19153

hpla studio

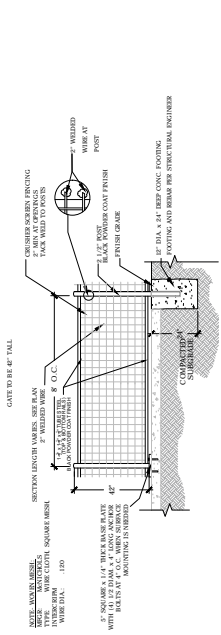
HUMPHREYS & PARTNERS
LANDSCAPE ARCHITECTURE L.L.C.
5300 CAMP ROAD, SUITE 300
DALLAS, TX 75240
P: (972) 707-9836
F: (972) 707-9836
W: www.hplastudio.com

CLIENT
GARRETT COMPANIES
GARRETT COMPANIES BLDG
SUITE 100, Greenwood, Indiana 46143
T: (317) 886-7923

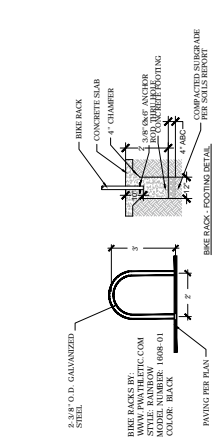
SHEET TITLE
SITE DETAILS

SHEET NUMBER
17 of 31

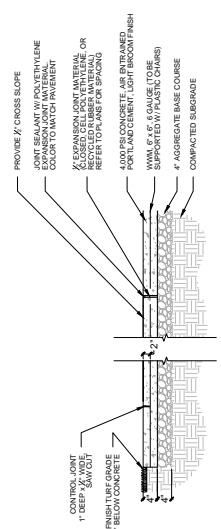
CITY FILE NUMBER
CPC CU-19-00014



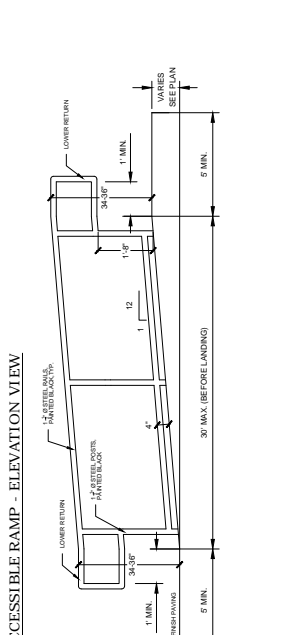
01 SCORED CONCRETE
SCALE: 3/4" = 1'-0"



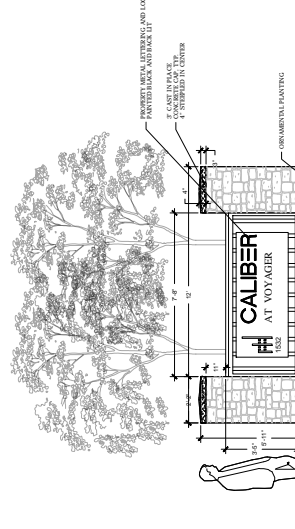
02 BIKE RACK
SCALE: 3/8" = 1'-0"



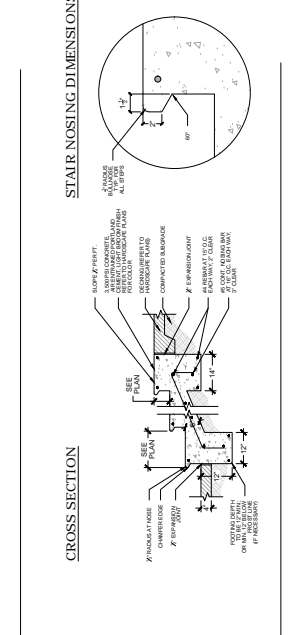
03 DOG PARK PERIMETER FENCE
SCALE: 3/8" = 1'-0"



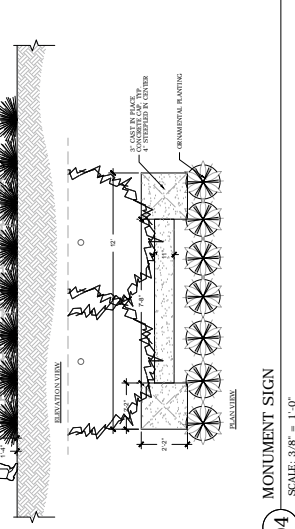
04 MONUMENT SIGN
SCALE: 3/8" = 1'-0"



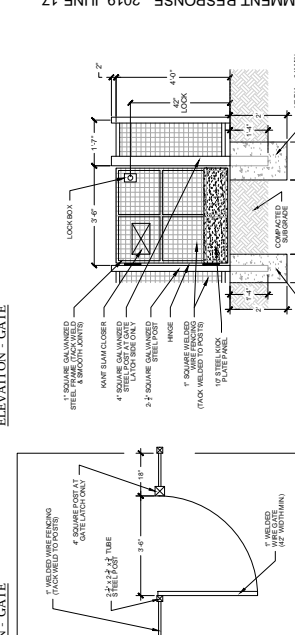
05 CONCRETE RAMP
SCALE: 1/2" = 1'-0"



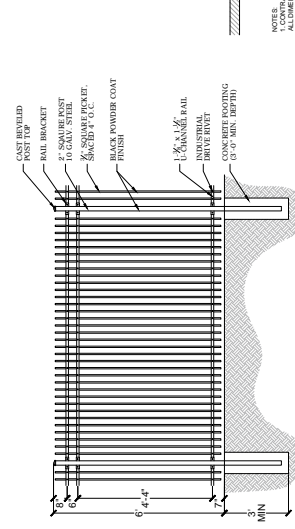
06 CONCRETE STAIRS
SCALE: 1/2" = 1'-0"



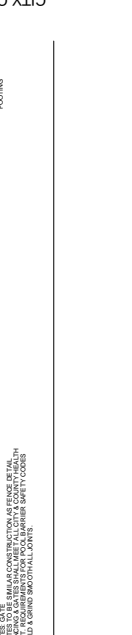
07 TUBE STEEL PERIMETER FENCE
SCALE: 3/8" = 1'-0"



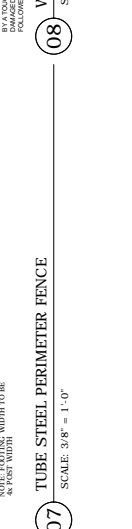
08 ACCESSIBLE RAMP - ELEVATION VIEW
SCALE: 3/8" = 1'-0"



09 ACCESSIBLE RAMP - CROSS SECTION
SCALE: 3/8" = 1'-0"



10 STAIR NOSING DIMENSIONS



11 ELEVATION - GATE



12 PLAN - GATE



13 RAIL EXTENSION AT TOP

14 RAIL EXTENSION AT BOTTOM

CITY COMMENT RESPONSE - 2019 JUNE-17

FIGURE 1

Designed by	GL
Drawn by	JA
Checked by	CA
Date	03/13/19
Sheet No.	18 OF 31
Project No.	XXXXXXXXXX
Revision	XXXXXXXXXX
DATE	COMMENTS

© 1919 by Humphreys & Partners, L.P. All rights reserved. This drawing is the property of Humphreys & Partners, L.P. and is not to be reproduced, stored in a retrieval system, or transmitted in any form or by any means, electronic, mechanical, photocopying, recording, or by any information storage and retrieval system, without the prior written permission of Humphreys & Partners, L.P. This drawing is not to be used for any other project without the prior written permission of Humphreys & Partners, L.P. The information contained herein is for informational purposes only and does not constitute an offer of any financial product or service. Humphreys & Partners, L.P. is not a fiduciary and does not provide any financial advice. Humphreys & Partners, L.P. is not a broker-dealer and does not sell securities. Humphreys & Partners, L.P. is not a registered investment advisor and does not provide any investment advice. Humphreys & Partners, L.P. is not a financial planner and does not provide any financial planning services. Humphreys & Partners, L.P. is not a tax advisor and does not provide any tax advice. Humphreys & Partners, L.P. is not a lawyer and does not provide any legal services. Humphreys & Partners, L.P. is not a doctor and does not provide any medical services. Humphreys & Partners, L.P. is not a nurse and does not provide any nursing services. Humphreys & Partners, L.P. is not a pharmacist and does not provide any pharmaceutical services. Humphreys & Partners, L.P. is not a veterinarian and does not provide any veterinary services. Humphreys & Partners, L.P. is not a dentist and does not provide any dental services. Humphreys & Partners, L.P. is not a chiropractor and does not provide any chiropractic services. Humphreys & Partners, L.P. is not a massage therapist and does not provide any massage services. Humphreys & Partners, L.P. is not a personal trainer and does not provide any fitness services. Humphreys & Partners, L.P. is not a nutritionist and does not provide any nutrition services. Humphreys & Partners, L.P. is not a life coach and does not provide any coaching services. Humphreys & Partners, L.P. is not a career counselor and does not provide any career counseling services. Humphreys & Partners, L.P. is not a financial advisor and does not provide any financial advisory services. Humphreys & Partners, L.P. is not a business consultant and does not provide any business consulting services. Humphreys & Partners, L.P. is not a management consultant and does not provide any management consulting services. Humphreys & Partners, L.P. is not a strategy consultant and does not provide any strategy consulting services. Humphreys & Partners, L.P. is not a marketing consultant and does not provide any marketing consulting services. Humphreys & Partners, L.P. is not a sales consultant and does not provide any sales consulting services. Humphreys & Partners, L.P. is not a human resources consultant and does not provide any human resources consulting services. Humphreys & Partners, L.P. is not a legal consultant and does not provide any legal consulting services. Humphreys & Partners, L.P. is not a tax consultant and does not provide any tax consulting services. Humphreys & Partners, L.P. is not an insurance consultant and does not provide any insurance consulting services. Humphreys & Partners, L.P. is not a real estate consultant and does not provide any real estate consulting services. Humphreys & Partners, L.P. is not a mortgage consultant and does not provide any mortgage consulting services. Humphreys & Partners, L.P. is not a title insurance consultant and does not provide any title insurance consulting services. Humphreys & Partners, L.P. is not a home inspection consultant and does not provide any home inspection consulting services. Humphreys & Partners, L.P. is not a property management consultant and does not provide any property management consulting services. Humphreys & Partners, L.P. is not a construction consultant and does not provide any construction consulting services. Humphreys & Partners, L.P. is not a general contractor and does not provide any general contracting services. Humphreys & Partners, L.P. is not a subcontractor and does not provide any subcontracting services. Humphreys & Partners, L.P. is not a supplier and does not provide any supplying services. Humphreys & Partners, L.P. is not a manufacturer and does not provide any manufacturing services. Humphreys & Partners, L.P. is not a distributor and does not provide any distributing services. Humphreys & Partners, L.P. is not a wholesaler and does not provide any wholesaling services. Humphreys & Partners, L.P. is not a retailer and does not provide any retailing services. Humphreys & Partners, L.P. is not a merchant and does not provide any merchandising services. Humphreys & Partners, L.P. is not a trader and does not provide any trading services. Humphreys & Partners, L.P. is not a broker and does not provide any brokering services. Humphreys & Partners, L.P. is not a dealer and does not provide any dealing services. Humphreys & Partners, L.P. is not a commission agent and does not provide any commission agenting services. Humphreys & Partners, L.P. is not a representative and does not provide any representing services. Humphreys & Partners, L.P. is not an agent and does not provide any agency services. Humphreys & Partners, L.P. is not a fiduciary and does not provide any fiduciary services. Humphreys & Partners, L.P. is not a trustee and does not provide any trust services. Humphreys & Partners, L.P. is not an executor and does not provide any executor services. Humphreys & Partners, L.P. is not an administrator and does not provide any administrator services. Humphreys & Partners, L.P. is not a guardian and does not provide any guardian services. Humphreys & Partners, L.P. is not a conservator and does not provide any conservator services. Humphreys & Partners, L.P. is not a receiver and does not provide any receiver services. Humphreys & Partners, L.P. is not a liquidator and does not provide any liquidator services. Humphreys & Partners, L.P. is not a trustee in bankruptcy and does not provide any trustee in bankruptcy services. Humphreys & Partners, L.P. is not a debtor in possession and does not provide any debtor in possession services. Humphreys & Partners, L.P. is not a Chapter 11 debtor and does not provide any Chapter 11 debtor services. Humphreys & Partners, L.P. is not a Chapter 12 debtor and does not provide any Chapter 12 debtor services. Humphreys & Partners, L.P. is not a Chapter 13 debtor and does not provide any Chapter 13 debtor services. Humphreys & Partners, L.P. is not a Chapter 7 debtor and does not provide any Chapter 7 debtor services. Humphreys & Partners, L.P. is not a Chapter 11 creditor and does not provide any Chapter 11 creditor services. Humphreys & Partners, L.P. is not a Chapter 12 creditor and does not provide any Chapter 12 creditor services. Humphreys & Partners, L.P. is not a Chapter 13 creditor and does not provide any Chapter 13 creditor services. Humphreys & Partners, L.P. is not a Chapter 7 creditor and does not provide any Chapter 7 creditor services. Humphreys & Partners, L.P. is not a Chapter 11 trustee and does not provide any Chapter 11 trustee services. Humphreys & Partners, L.P. is not a Chapter 12 trustee and does not provide any Chapter 12 trustee services. Humphreys & Partners, L.P. is not a Chapter 13 trustee and does not provide any Chapter 13 trustee services. Humphreys & Partners, L.P. is not a Chapter 7 trustee and does not provide any Chapter 7 trustee services. Humphreys & Partners, L.P. is not a Chapter 11 debtor in possession and does not provide any Chapter 11 debtor in possession services. Humphreys & Partners, L.P. is not a Chapter 12 debtor in possession and does not provide any Chapter 12 debtor in possession services. Humphreys & Partners, L.P. is not a Chapter 13 debtor in possession and does not provide any Chapter 13 debtor in possession services. Humphreys & Partners, L.P. is not a Chapter 7 debtor in possession and does not provide any Chapter 7 debtor in possession services. Humphreys & Partners, L.P. is not a Chapter 11 creditor in possession and does not provide any Chapter 11 creditor in possession services. Humphreys & Partners, L.P. is not a Chapter 12 creditor in possession and does not provide any Chapter 12 creditor in possession services. Humphreys & Partners, L.P. is not a Chapter 13 creditor in possession and does not provide any Chapter 13 creditor in possession services. Humphreys & Partners, L.P. is not a Chapter 7 creditor in possession and does not provide any Chapter 7 creditor in possession services. Humphreys & Partners, L.P. is not a Chapter 11 trustee in possession and does not provide any Chapter 11 trustee in possession services. Humphreys & Partners, L.P. is not a Chapter 12 trustee in possession and does not provide any Chapter 12 trustee in possession services. Humphreys & Partners, L.P. is not a Chapter 13 trustee in possession and does not provide any Chapter 13 trustee in possession services. Humphreys & Partners, L.P. is not a Chapter 7 trustee in possession and does not provide any Chapter 7 trustee in possession services. Humphreys & Partners, L.P. is not a Chapter 11 debtor in possession trustee and does not provide any Chapter 11 debtor in possession trustee services. Humphreys & Partners, L.P. is not a Chapter 12 debtor in possession trustee and does not provide any Chapter 12 debtor in possession trustee services. Humphreys & Partners, L.P. is not a Chapter 13 debtor in possession trustee and does not provide any Chapter 13 debtor in possession trustee services. Humphreys & Partners, L.P. is not a Chapter 7 debtor in possession trustee and does not provide any Chapter 7 debtor in possession trustee services. Humphreys & Partners, L.P. is not a Chapter 11 creditor in possession trustee and does not provide any Chapter 11 creditor in possession trustee services. Humphreys & Partners, L.P. is not a Chapter 12 creditor in possession trustee and does not provide any Chapter 12 creditor in possession trustee services. Humphreys & Partners, L.P. is not a Chapter 13 creditor in possession trustee and does not provide any Chapter 13 creditor in possession trustee services. Humphreys & Partners, L.P. is not a Chapter 7 creditor in possession trustee and does not provide any Chapter 7 creditor in possession trustee services. Humphreys & Partners, L.P. is not a Chapter 11 trustee in possession trustee and does not provide any Chapter 11 trustee in possession trustee services. Humphreys & Partners, L.P. is not a Chapter 12 trustee in possession trustee and does not provide any Chapter 12 trustee in possession trustee services. Humphreys & Partners, L.P. is not a Chapter 13 trustee in possession trustee and does not provide any Chapter 13 trustee in possession trustee services. Humphreys & Partners, L.P. is not a Chapter 7 trustee in possession trustee and does not provide any Chapter 7 trustee in possession trustee services. Humphreys & Partners, L.P. is not a Chapter 11 debtor in possession trustee in possession and does not provide any Chapter 11 debtor in possession trustee in possession services. Humphreys & Partners, L.P. is not a Chapter 12 debtor in possession trustee in possession and does not provide any Chapter 12 debtor in possession trustee in possession services. Humphreys & Partners, L.P. is not a Chapter 13 debtor in possession trustee in possession and does not provide any Chapter 13 debtor in possession trustee in possession services. Humphreys & Partners, L.P. is not a Chapter 7 debtor in possession trustee in possession and does not provide any Chapter 7 debtor in possession trustee in possession services. Humphreys & Partners, L.P. is not a Chapter 11 creditor in possession trustee in possession and does not provide any Chapter 11 creditor in possession trustee in possession services. Humphreys & Partners, L.P. is not a Chapter 12 creditor in possession trustee in possession and does not provide any Chapter 12 creditor in possession trustee in possession services. Humphreys & Partners, L.P. is not a Chapter 13 creditor in possession trustee in possession and does not provide any Chapter 13 creditor in possession trustee in possession services. Humphreys & Partners, L.P. is not a Chapter 7 creditor in possession trustee in possession and does not provide any Chapter 7 creditor in possession trustee in possession services. Humphreys & Partners, L.P. is not a Chapter 11 trustee in possession trustee in possession and does not provide any Chapter 11 trustee in possession trustee in possession services. Humphreys & Partners, L.P. is not a Chapter 12 trustee in possession trustee in possession and does not provide any Chapter 12 trustee in possession trustee in possession services. Humphreys & Partners, L.P. is not a Chapter 13 trustee in possession trustee in possession and does not provide any Chapter 13 trustee in possession trustee in possession services. Humphreys & Partners, L.P. is not a Chapter 7 trustee in possession trustee in possession and does not provide any Chapter 7 trustee in possession trustee in possession services.

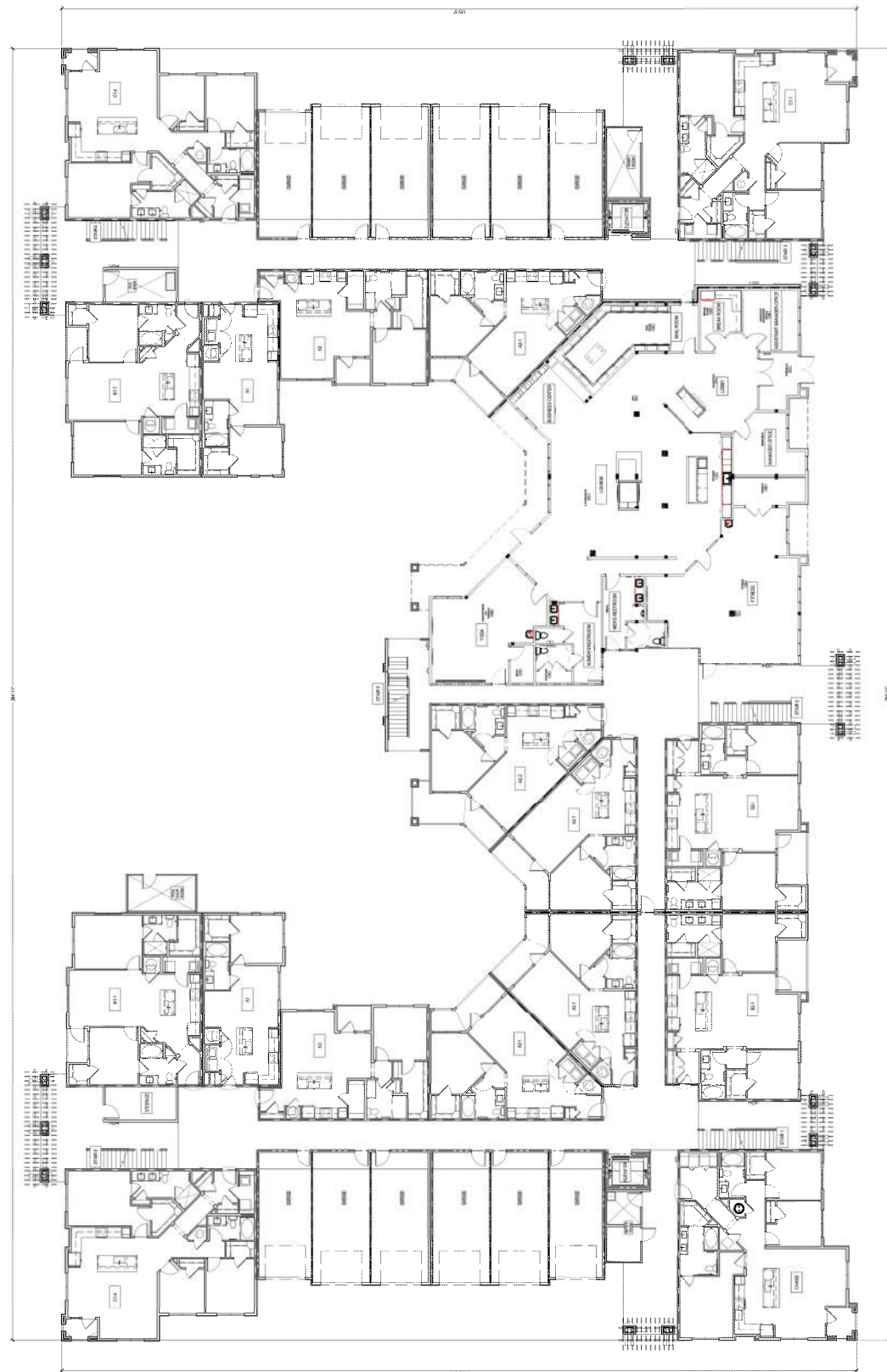
CALIBER AT VOYAGER
 COLORADO SPRINGS, CO
 THE GARRETT COMPANIES

HUMPHREYS & PARTNERS
 ARCHITECTS, L.P.
 5539 ALPHA ROAD, SUITE 300, DALLAS, TEXAS 75240
 (972) 701-9636 • (972) 701-9639 FAX
 www.humphreys.com
 DALLAS • CHICAGO • DENVER • NEW ORLEANS • NEW YORK
 NEWPORT BEACH • ORLANDO • SCOTTSDALE • CHICAGO • HANNOVER
 LONDON • MONTEVIDEO • MEXICO CITY • TORONTO



SHEET NO. 18 OF 31
 BUILDING PLAN
 SHEET NO.

CITY FILE NO. CPC CU 19-00014



1 BUILDING I - FIRST FLOOR PLAN
 SCALE: 3/32" = 1'-0"

CITY STAMP

FIGURE 1

Discipline	CA	
Drawn by	JA	
Checked by	CS	
Issue Number	040319	
Issue for Project Meeting	XXXXXXX	
Issue for Field Application	XXXXXXX	
Issue for Construction	XXXXXXX	
Revision		
#	DATE	COMMENTS

NOTICE: The information on this drawing was prepared by Humphreys & Partners, L.P. and is intended for the use of the client. It is not to be used for any other purpose without the written consent of Humphreys & Partners, L.P. The information on this drawing is not to be used for any other purpose without the written consent of Humphreys & Partners, L.P. The information on this drawing is not to be used for any other purpose without the written consent of Humphreys & Partners, L.P.

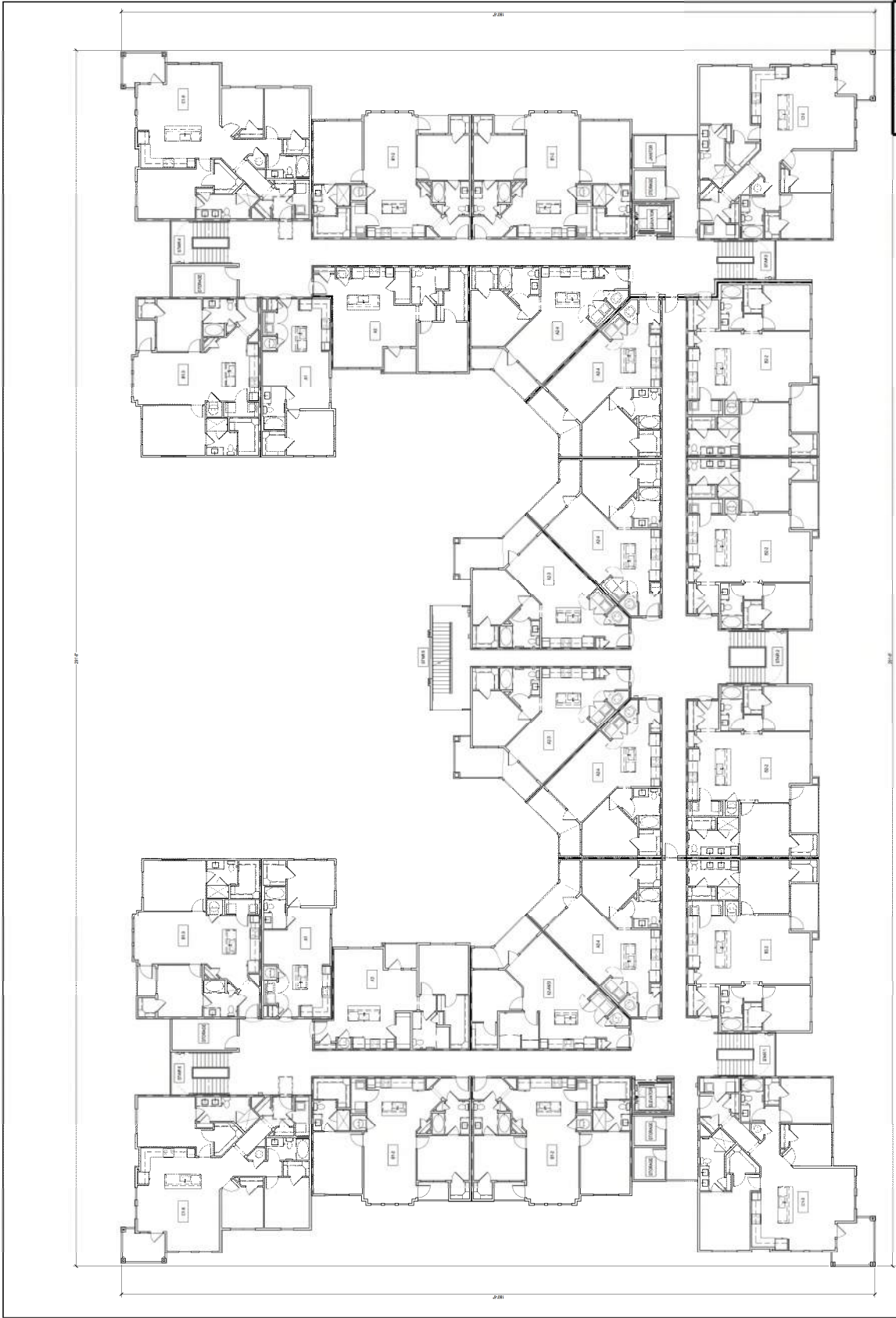
THE GARRETT COMPANIES
 COLORADO SPRINGS, CO
 CALIBER AT VOYAGER

HUMPHREYS & PARTNERS
 ARCHITECTS, L.P.
 5339 ALPHEA ROAD, SUITE 300 DALLAS, TEXAS 75240
 (972) 751-9626 • (972) 751-4039 FAX
 DALLAS • CHARLOTTE • CHICAGO • DENVER • NEW ORLEANS • NEW YORK
 NEWPORT BEACH • OAKLAND • PORTLAND • PHOENIX • SAN ANTONIO
 LOS ANGELES • MONTECITO • WASHINGTON, DC
 www.humphreys.com



SHEET CONTAINS:
 BLDG I - THIRD &
 FOURTH FLOOR PLAN
 SHEET NO.

20 OF 31
 CITY FILE NO.
 GFC CU 1540014



CITY STAMP

1 BUILDING I - THIRD & FOURTH FLOOR PLAN
 SCALE: 3/32" = 1'-0"

FIGURE 1

Designed by	GL	
Drawn by	JA	
Checked by	CA	
Date of Issue	03/19	
Project No.	XXXXXXXXXX	
Sheet No.	XXXXXXXXXX	
Scale	XXXXXXXXXX	
Author	XXXXXXXXXX	
Rev	DATE	COMMENTS

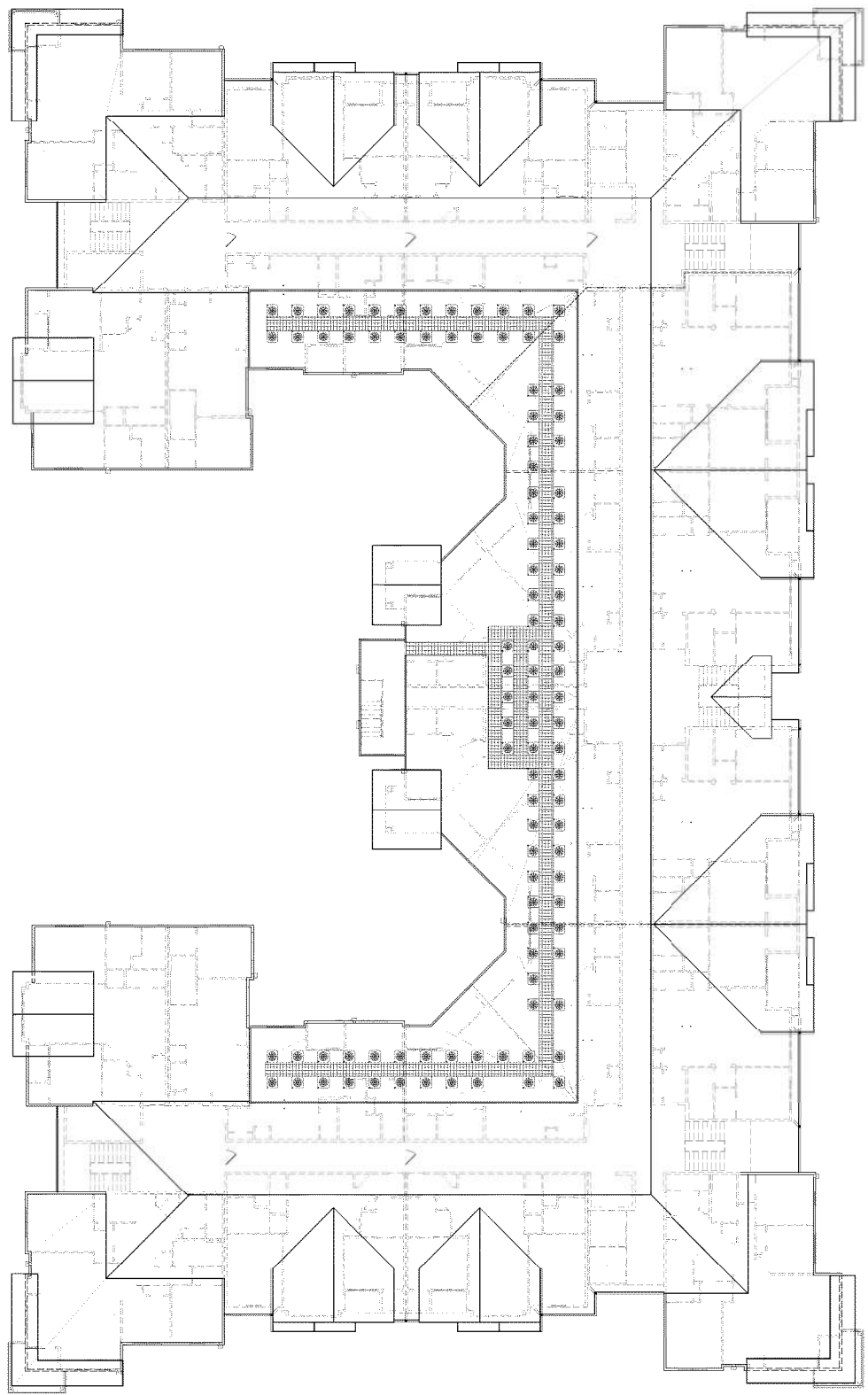
© 2019 by Humphreys & Partners Architects, L.P. All rights reserved. This drawing is the property of Humphreys & Partners Architects, L.P. and is not to be reproduced, stored in a retrieval system, or transmitted in any form or by any means, electronic, mechanical, photocopying, recording, or by any information storage and retrieval system, without the prior written permission of Humphreys & Partners Architects, L.P. This drawing is intended for the use and reference of the client and is not to be used for any other purpose. Humphreys & Partners Architects, L.P. and its employees shall not be liable for any errors or omissions in this drawing or for any consequences arising therefrom.

THE GARRETT COMPANIES
 COLORADO SPRINGS, CO
 CALIBER AT VOYAGER

HUMPHREYS & PARTNERS ARCHITECTS, L.P.
 5539 ALPHA ROAD - SUITE 300 - DALLAS, TEXAS 75240
 (972) 701-9606 - (972) 701-9639 FAX
 www.humphreys.com
 DALLAS - CHARLOTTE - CHICAGO - DENVER - NEW ORLEANS - NEW YORK
 NEWPORT BEACH - ORLANDO - SCOTSDALE - CHICAGO - HANNOVER
 LONDON - MONTREAL - MEXICO CITY - TORONTO

SHEET NO. 21 OF 31
 BLDG - ROOF PLAN

CITY FILE NO.
 CPC CU 19-00014



1 BUILDING I - ROOF PLAN
 SCALE 3/32" = 1'-0"

CITY STAMP

FIGURE 1

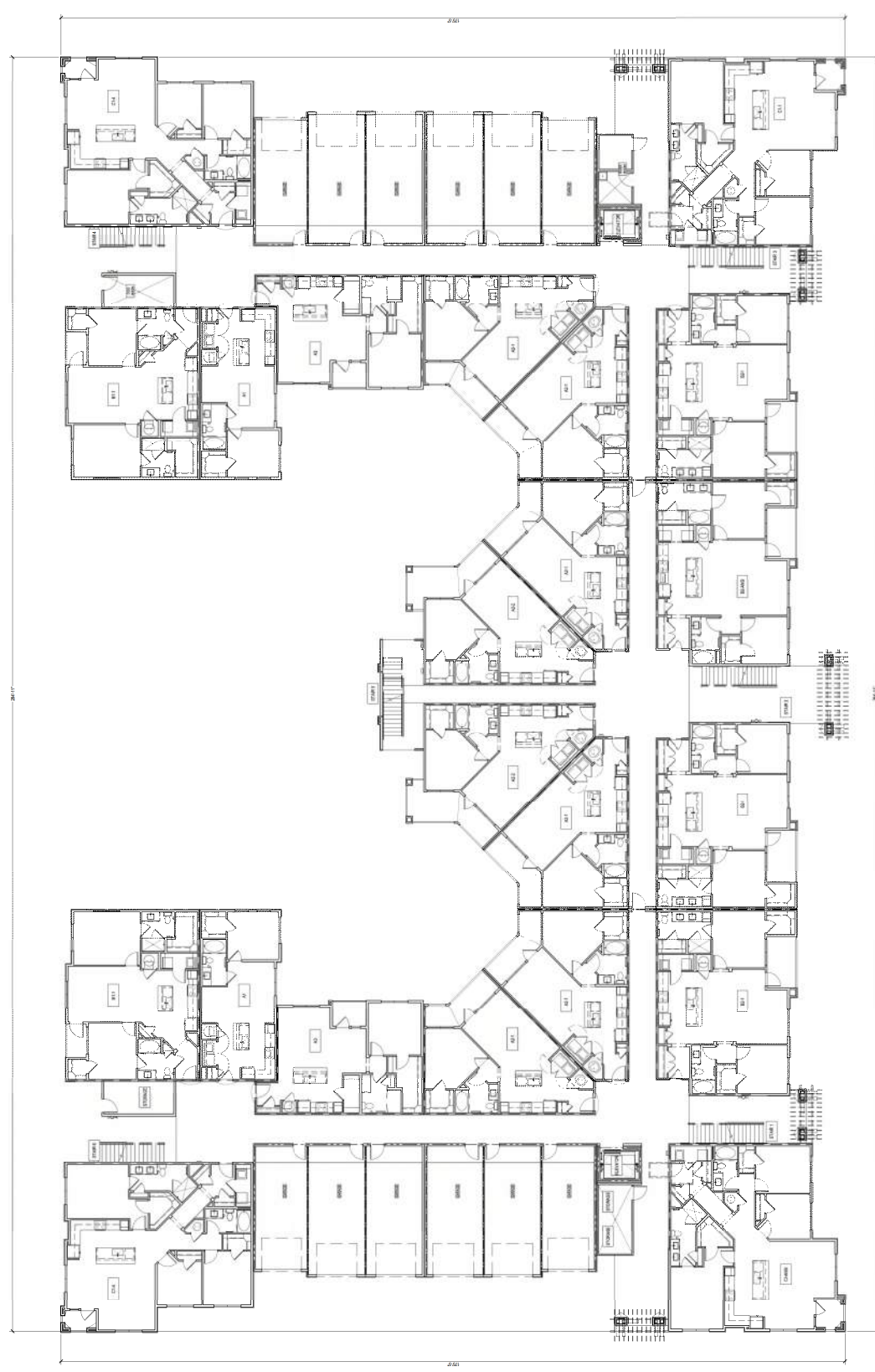
Designed by	GL
Drawn by	JA
Checked by	CA
Date	03/19
Sheet No.	24 OF 31
Project No.	XXXXXXXXXX
Year of Construction	XXXXXXXXXX
Notes	XXXXXXXXXX
DATE	COMMENTS

© 1994 by Humphreys & Partners, L.P. All rights reserved. This drawing is the property of Humphreys & Partners, L.P. and is not to be reproduced, stored in a retrieval system, or transmitted in any form or by any means, electronic, mechanical, photocopying, recording, or by any information storage and retrieval system, without the prior written permission of Humphreys & Partners, L.P. This drawing is intended for the use of the contractor and is not to be used for any other purpose. The contractor shall be responsible for obtaining all necessary permits and for complying with all applicable laws and regulations. The contractor shall also be responsible for obtaining all necessary approvals from the appropriate authorities. The contractor shall also be responsible for obtaining all necessary approvals from the appropriate authorities. The contractor shall also be responsible for obtaining all necessary approvals from the appropriate authorities.

CALIBER AT VOYAGER
 THE GARRETT COMPANIES
 COLORADO SPRINGS, CO

HUMPHREYS & PARTNERS
 ARCHITECTS, L.P.
 5539 ALPHEA ROAD, SUITE 300, DALLAS, TEXAS 75240
 (972) 701-9636 (972) 701-9639 FAX
 www.humphreys.com
 DALLAS - CHICAGO - DENVER - HOUSTON - LOS ANGELES - MIAMI - NEW YORK - PHOENIX - SAN ANTONIO - SEATTLE - TAMPA - WASHINGTON, DC
 NEWPORT BEACH - ORLANDO - SCOTTSDALE - CHICAGO - HANNOVER, NH
 LONDON - MONTREAL - MEXICO CITY - TORONTO

SHEET NO. 24 OF 31
 CITY FILE NO. CPC CU 19-00014



CITY STAMP

1 BUILDING II - FIRST FLOOR PLAN
 SCALE: 3/32" = 1'-0"

FIGURE 1

Designed by	GL
Drawn by	JA
Project Number	040319
Sheet Title	Building Plan
Sheet No. in Series	XX00000
Series No.	XX00000
Date	XX/XX/XX
Comments	

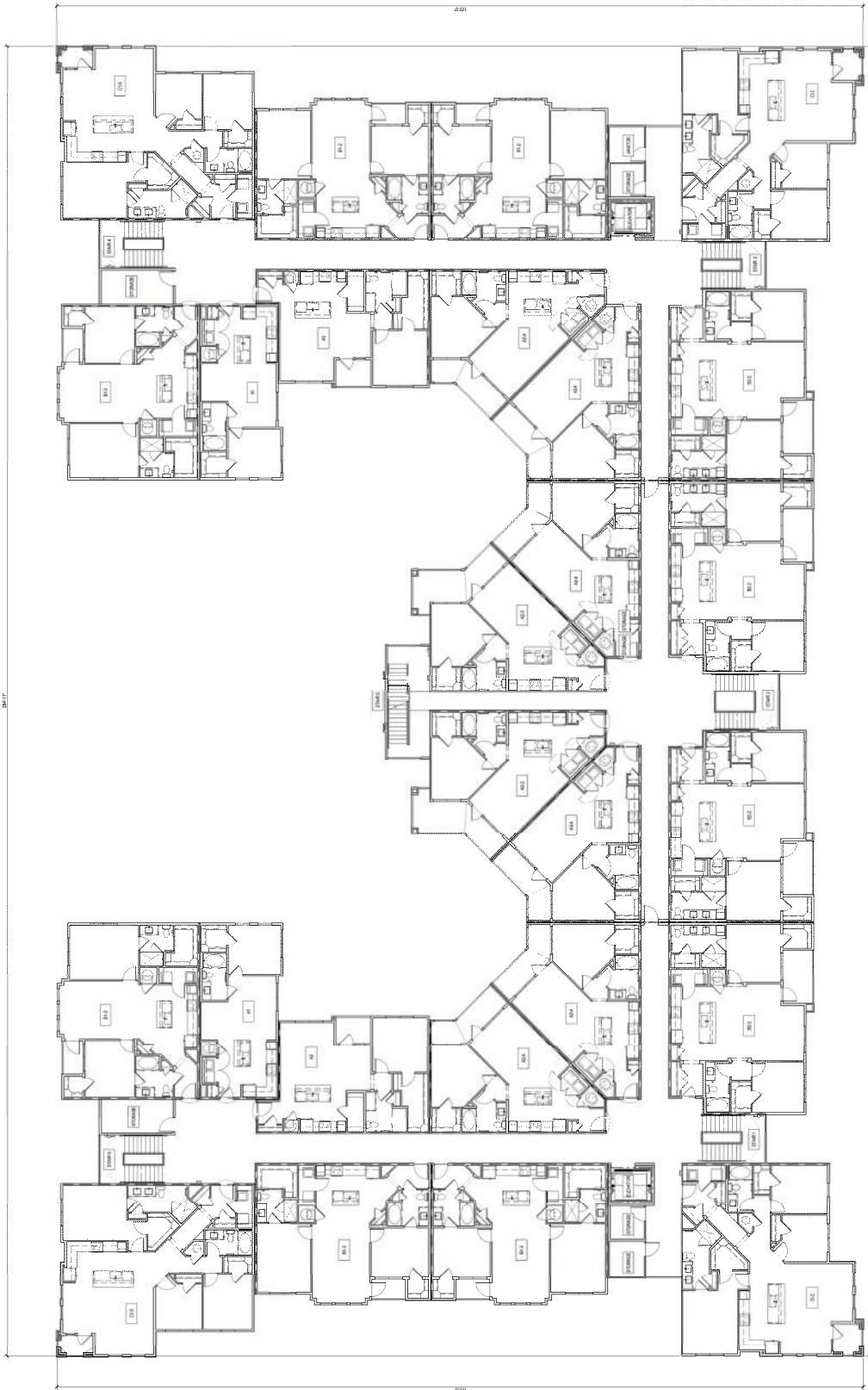
THIS DOCUMENT IS THE PROPERTY OF HUMPHREYS & PARTNERS ARCHITECTS, L.P. ANY REPRODUCTION OR TRANSMISSION OF THIS DOCUMENT IN ANY FORM OR BY ANY MEANS, WITHOUT THE WRITTEN PERMISSION OF HUMPHREYS & PARTNERS ARCHITECTS, L.P. IS STRICTLY PROHIBITED. THIS DOCUMENT IS TO BE USED ONLY FOR THE PROJECT AND SITE SPECIFICALLY IDENTIFIED HEREIN. ANY REUSE OF THIS DOCUMENT FOR ANY OTHER PROJECT OR SITE WITHOUT THE WRITTEN PERMISSION OF HUMPHREYS & PARTNERS ARCHITECTS, L.P. IS STRICTLY PROHIBITED.

CALIBER AT VOYAGER
 COLORADO SPRINGS, CO
 THE GARRETT COMPANIES

HUMPHREYS & PARTNERS ARCHITECTS, L.P.
 5339 ALPHEA ROAD - SUITE 300 - DALLAS, TEXAS 75240
 (972) 701-9636 (972) 701-9639 FAX
 DALLAS - CHARLOTTE - CHICAGO - DENVER - NEW ORLEANS - NEW YORK -
 NEWPORT BEACH - ORLANDO - SCOTTSDALE - CHENNAI - HANOI -
 LONDON - MIAMI - MEXICO CITY - TORONTO
 www.humphreys.com

SHEET CONTAINS
 BUILDING II - SECOND FLOOR
 BUILDING PLAN
 SHEET NO.

25 OF 31
 CITY FILE NO.
 CPC CU 19-00014



CITY STAMP

1 BUILDING II - SECOND FLOOR PLAN
 SCALE: 1/8" = 1'-0"

FIGURE 1

Discipline	CA
Drawn by	CA
Checked by	CS
Sheet Number	040319
Year of Project Issuing	XXXXXX
Year of Project Update	XXXXXX
Year of Construction	XXXXXX
Revision	
1	DATE: COMMENTS

NOTICE: The Architectural, Mechanical, Electrical, Plumbing, and Fire Protection drawings are the property of Humphreys & Partners Architects, L.P. and are not to be used for any other project without the written consent of Humphreys & Partners Architects, L.P. No portion of these drawings may be reproduced, stored in a retrieval system, or transmitted in any form or by any means, electronic, mechanical, photocopying, recording, or by any information storage and retrieval system, without the prior written consent of Humphreys & Partners Architects, L.P. The drawings are the property of Humphreys & Partners Architects, L.P. and are not to be used for any other project without the written consent of Humphreys & Partners Architects, L.P.

THE GARRETT COMPANIES
 COLORADO SPRINGS, CO
 CALIBER AT VOYAGER

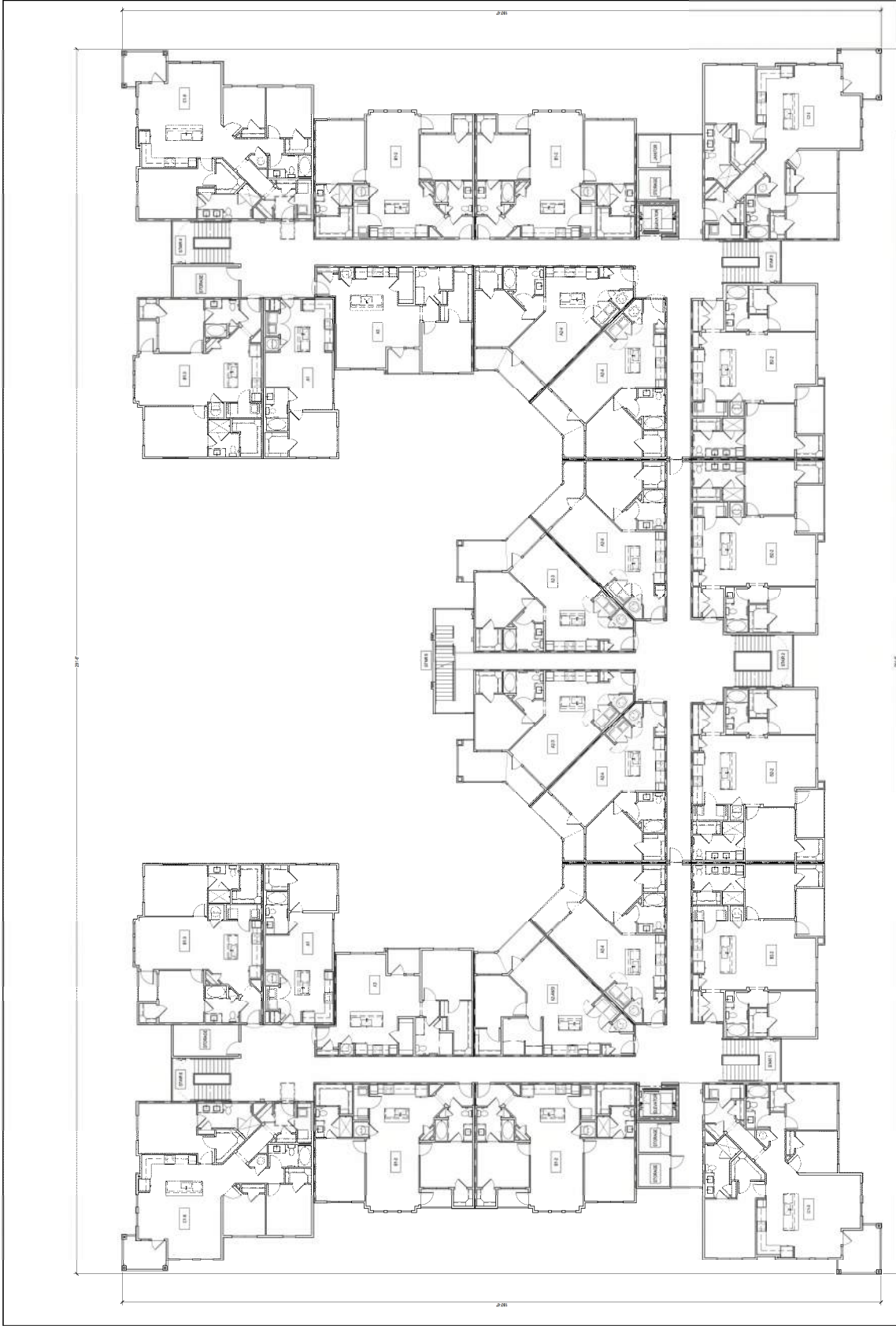
HUMPHREYS & PARTNERS
 ARCHITECTS, L.P.
 5339 ALPHEA ROAD, SUITE 300 DALLAS, TEXAS 75240
 (972) 751-9626 (972) 751-4039 FAX
 DALLAS - CHARLOTTE - CHICAGO - DENVER - NEW ORLEANS - NEW YORK
 NEWPORT BEACH - OKLAHOMA - PORTLAND - PHOENIX - SAN ANTONIO
 WASHINGTON - WASHINGTON DC - WASHINGTON DC
 www.humphreys.com



SHEET COORDINATE:
 BLDG II - THIRD &
 FOURTH FLOOR PLAN
 SHEET NO.

26 OF 31

CITY FILE NO.
 GFC CU 1540014



CITY STAMP

1 BUILDING II - THIRD & FOURTH FLOOR PLAN
 SCALE: 3/32" = 1'-0"

FIGURE 1

Designed by	GU	
Drawn by	JA	
Number of Sheet	06/03/19	
Sheet of Total Sheets	X/000000	
Sheet No. (of total sheets)	X/000000	
Revision	X/000000	
#	DATE	COMMENTS

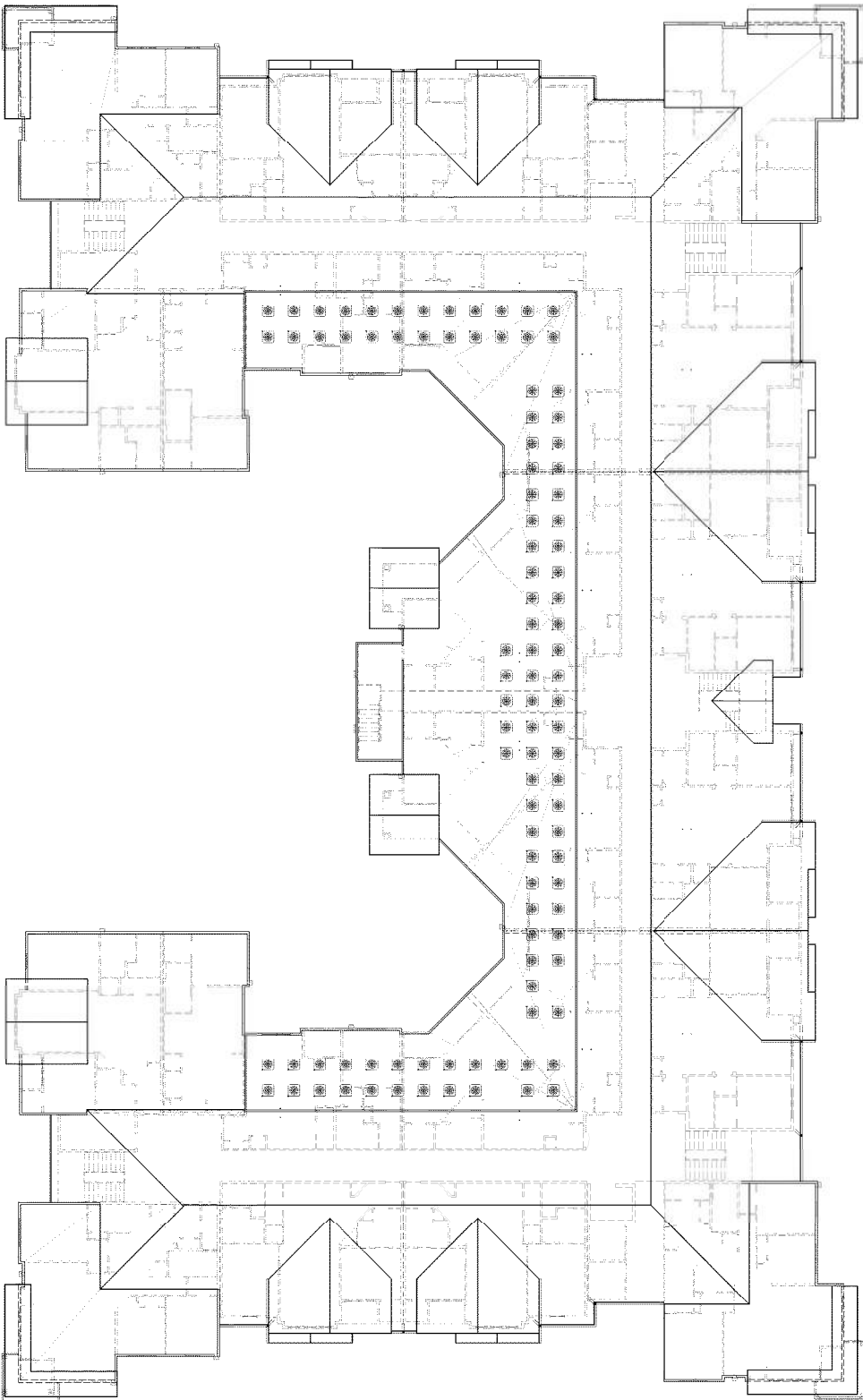
THIS DOCUMENT IS THE PROPERTY OF HUMPHREYS & PARTNERS ARCHITECTS, L.P. (H&P). IT IS TO BE USED ONLY FOR THE PROJECT AND SITE SPECIFICALLY IDENTIFIED IN THE TITLE OF THIS SHEET. IT IS NOT TO BE REPRODUCED, COPIED, OR TRANSMITTED IN ANY FORM OR BY ANY MEANS, WITHOUT THE WRITTEN PERMISSION OF H&P. ANY UNAUTHORIZED USE OF THIS DOCUMENT IS STRICTLY PROHIBITED. H&P ASSUMES NO LIABILITY FOR ANY ERRORS OR OMISSIONS IN THIS DOCUMENT. H&P IS NOT RESPONSIBLE FOR ANY CONSTRUCTION DEFECTS OR DELAYS CAUSED BY ANY OTHER PARTY. H&P IS NOT A LICENSED ARCHITECT IN THE STATE OF TEXAS. H&P IS NOT A LICENSED ARCHITECT IN THE STATE OF CALIFORNIA. H&P IS NOT A LICENSED ARCHITECT IN THE STATE OF FLORIDA. H&P IS NOT A LICENSED ARCHITECT IN THE STATE OF ILLINOIS. H&P IS NOT A LICENSED ARCHITECT IN THE STATE OF NEW YORK. H&P IS NOT A LICENSED ARCHITECT IN THE STATE OF PENNSYLVANIA. H&P IS NOT A LICENSED ARCHITECT IN THE STATE OF VIRGINIA. H&P IS NOT A LICENSED ARCHITECT IN THE STATE OF WASHINGTON. H&P IS NOT A LICENSED ARCHITECT IN THE STATE OF WISCONSIN. H&P IS NOT A LICENSED ARCHITECT IN THE STATE OF MINNESOTA. H&P IS NOT A LICENSED ARCHITECT IN THE STATE OF OHIO. H&P IS NOT A LICENSED ARCHITECT IN THE STATE OF INDIANA. H&P IS NOT A LICENSED ARCHITECT IN THE STATE OF MICHIGAN. H&P IS NOT A LICENSED ARCHITECT IN THE STATE OF MARYLAND. H&P IS NOT A LICENSED ARCHITECT IN THE STATE OF DELAWARE. H&P IS NOT A LICENSED ARCHITECT IN THE STATE OF DISTRICT OF COLUMBIA. H&P IS NOT A LICENSED ARCHITECT IN THE STATE OF MONTGOMERY. H&P IS NOT A LICENSED ARCHITECT IN THE STATE OF ALABAMA. H&P IS NOT A LICENSED ARCHITECT IN THE STATE OF MISSISSIPPI. H&P IS NOT A LICENSED ARCHITECT IN THE STATE OF LOUISIANA. H&P IS NOT A LICENSED ARCHITECT IN THE STATE OF MISSOURI. H&P IS NOT A LICENSED ARCHITECT IN THE STATE OF KENTUCKY. H&P IS NOT A LICENSED ARCHITECT IN THE STATE OF TENNESSEE. H&P IS NOT A LICENSED ARCHITECT IN THE STATE OF ARIZONA. H&P IS NOT A LICENSED ARCHITECT IN THE STATE OF NEVADA. H&P IS NOT A LICENSED ARCHITECT IN THE STATE OF IDAHO. H&P IS NOT A LICENSED ARCHITECT IN THE STATE OF MONTANA. H&P IS NOT A LICENSED ARCHITECT IN THE STATE OF WYOMING. H&P IS NOT A LICENSED ARCHITECT IN THE STATE OF UTAH. H&P IS NOT A LICENSED ARCHITECT IN THE STATE OF COLORADO. H&P IS NOT A LICENSED ARCHITECT IN THE STATE OF NEBRASKA. H&P IS NOT A LICENSED ARCHITECT IN THE STATE OF KANSAS. H&P IS NOT A LICENSED ARCHITECT IN THE STATE OF OKLAHOMA. H&P IS NOT A LICENSED ARCHITECT IN THE STATE OF TEXAS.

CALIBER AT VOYAGER
 THE GARRETT COMPANIES
 COLORADO SPRINGS, CO

HUMPHREYS & PARTNERS ARCHITECTS, L.P.
 5339 ALPHEA ROAD - SUITE 300 - DALLAS, TEXAS 75240
 (972) 701-9636 (972) 701-9639 FAX
 www.humphreys.com
 DALLAS - CHICAGO - DENVER - NEW ORLEANS - NEW YORK - PHOENIX - PORTLAND - RICHMOND - SCOTTSDALE - TAMPA - WASHINGTON - WICHITA
 LONDON - MONTECARLO - MEXICO CITY - TORONTO

SHEET CONTAINS
 BLDG I ROOF PLAN

SHEET NO.
27 OF 31
 CITY FILE NO.
 CPC CU 19-00014



CITY STAMP

1 BUILDING II - ROOF PLAN
 SCALE: 1/8" = 1'-0"

FIGURE 1

Designed by	GJ	
Drawn by	JA	
Number of sheets	04/03/19	
Sheet title	Building II - Exterior Elevations	
Sheet to follow	XXXXXX	
Sheet to precede	XXXXXX	
Revision	XXXXXX	
#	DATE	COMMENTS

Copyright © 2019 by Humpfrey & Partners Architects, L.P. All rights reserved.
 This drawing is the property of Humpfrey & Partners Architects, L.P. and is not to be reproduced, stored in a retrieval system, or transmitted in any form or by any means, electronic, mechanical, photocopying, recording, or by any information storage and retrieval system, without the prior written permission of Humpfrey & Partners Architects, L.P. This drawing is intended for the use of the architect and is not to be used for any other purpose. The architect assumes no liability for the construction of any building or structure based on this drawing. Humpfrey & Partners Architects, L.P. and its employees shall not be held liable for any errors or omissions in this drawing. Humpfrey & Partners Architects, L.P. and its employees shall not be held liable for any errors or omissions in this drawing.

CALIBER AT VOYAGER
 THE GARRETT COMPANIES
 COLORADO SPRINGS, CO

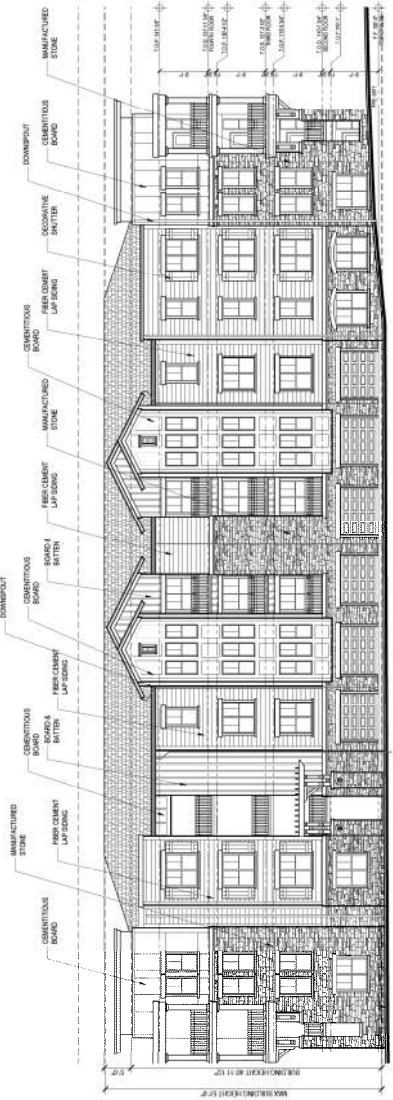
HUMPHREYS & PARTNERS ARCHITECTS, L.P.
 5339 ALPHEA ROAD, SUITE 300 DALLAS TEXAS 75240
 (972) 701-9636 (972) 701-9639 FAX
 DALLAS - CHARLOTTE - CHICAGO - DENVER - NEW ORLEANS - NEW YORK - NEWPORT BEACH - ORLANDO - SCOTTSDALE - CHENNAI - HANOI - LONDON - NANTES - PARIS - SAO PAULO - MEXICO CITY - TORONTO
 www.humphreys.com



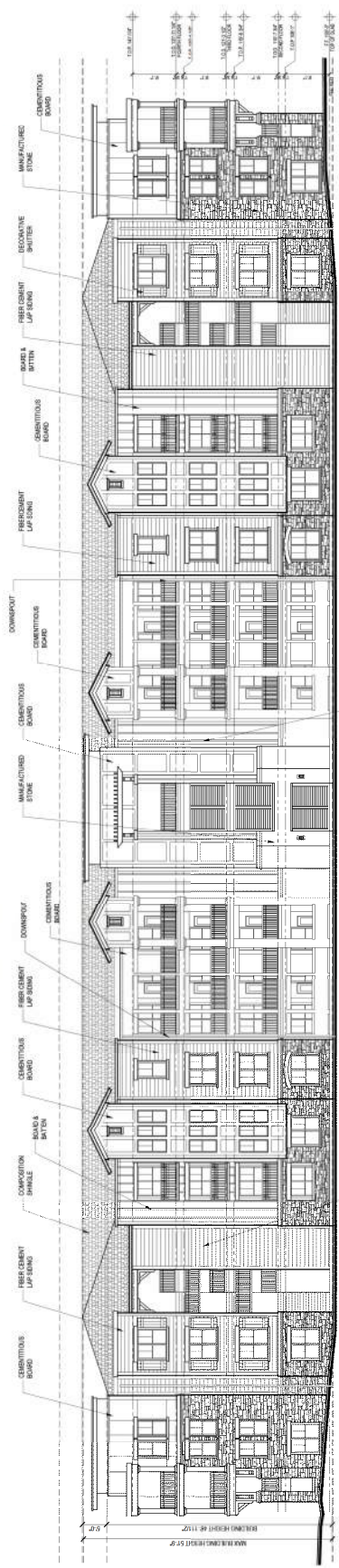
SHEET CONTAINS
 BLDG II - EXTERIOR
 ELEVATIONS
 SHEET NO.

29 OF 31
 CITY FILE NO.
 CPC CU 19-00014

ADMINISTRATIVE RELIEF HAS BEEN
 SOUGHT. CITY FILE REFERENCE
 NUMBER FOR THIS REQUEST IS
 CPC AR 19-00015



2 BUILDING II - NORTH ELEVATION
 SCALE: 3/32" = 1'-0"



1 BUILDING II - WEST ELEVATION
 SCALE: 3/32" = 1'-0"

CITY STAMP

FIGURE 1

Designed by: GJ
 Owner by: JA
 Architect of Record: CA
 Date Issued: 05/03/19
 Drawing Number: 19-000000
 Title: 19-000000
 Issue for Permit Application: XXXXXXXX
 Issue for Construction: XXXXXXXX
 Issue for: DATE COMMENTS

© 1919 by Humphreys & Partners Architects, L.P. All rights reserved. This drawing is the property of Humphreys & Partners Architects, L.P. and is not to be reproduced, stored in a retrieval system, or transmitted in any form or by any means, electronic, mechanical, photocopying, recording, or by any information storage and retrieval system, without the prior written permission of Humphreys & Partners Architects, L.P. This drawing is not to be used for any other project without the prior written permission of Humphreys & Partners Architects, L.P. This drawing is not to be used for any other project without the prior written permission of Humphreys & Partners Architects, L.P. This drawing is not to be used for any other project without the prior written permission of Humphreys & Partners Architects, L.P.

CALIBER AT VOYAGER
 THE GARRETT COMPANIES
 COLORADO SPRINGS, CO

HUMPHREYS & PARTNERS
 ARCHITECTS, L.P.
 5339 ALPHA ROAD, SUITE 300, DALLAS, TEXAS 75240
 (972) 701-9636 | (972) 701-9639 FAX
 www.humphreys.com
 DALLAS - CHARLOTTE - CHICAGO - DENVER - NEW ORLEANS - NEW YORK - NEWPORT BEACH - ORLANDO - SCOTTSDALE - CHICAGO - HANNOVER - LONDON - MONTREY - MIAMI - TORONTO

SHEET NO. 30 OF 31
 SHEET TITLE: DETACHED GARAGE ELEVATIONS
 CITY FILE NO. CPC CU 19-00014

CITY STAMP

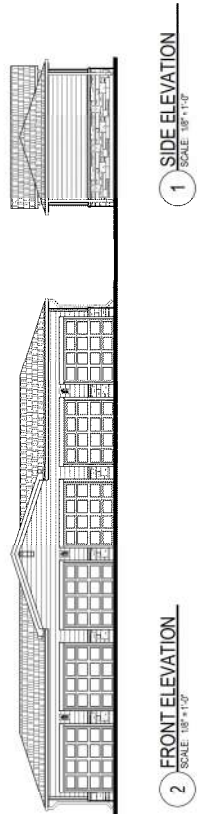
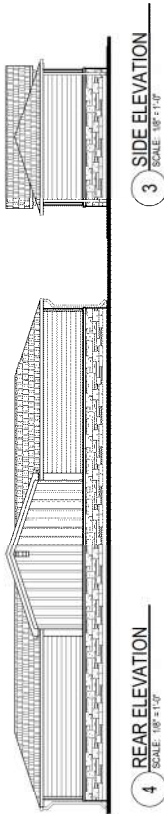
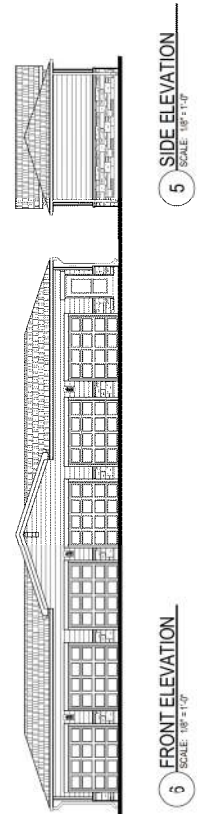
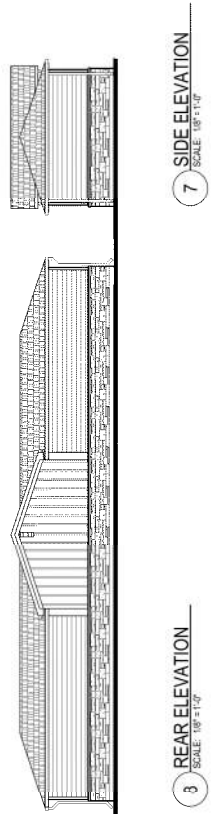


FIGURE 1

Designed by: G.L.
 Drawn by: J.A.
 Date of Report: 03/03/19
 Date of Drawing: 03/03/19
 Title: XXXXXXX
 Name of Project: XXXXXXX
 Name of Client: XXXXXXX
 Name of Designer: XXXXXXX

© 1994 by Humphreys & Partners, Inc. All rights reserved.
 This drawing is the property of Humphreys & Partners, Inc. and is loaned to the client for the specific project only. It is not to be reproduced, stored in a retrieval system, or transmitted in any form or by any means, electronic, mechanical, photocopying, recording, or by any information storage and retrieval system, without the prior written permission of Humphreys & Partners, Inc. The client agrees to indemnify and hold Humphreys & Partners, Inc. harmless from and against all claims, damages, and expenses, including reasonable attorneys' fees, that may be asserted against or incurred by Humphreys & Partners, Inc. in connection with or arising out of the use of this drawing. The client's use of this drawing is limited to the project and site specifically identified herein. Any other use of this drawing is strictly prohibited.

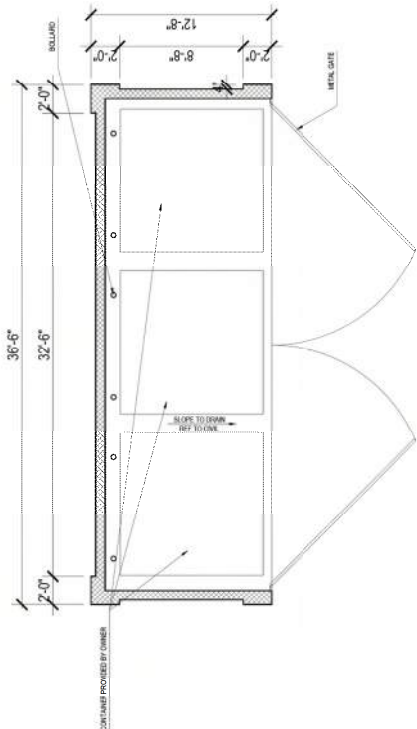
CALIBER AT VOYAGER
 THE GARRETT COMPANIES
 COLORADO SPRINGS, CO

HUMPHREYS & PARTNERS
 ARCHITECTS, L.P.
 5539 ALPHA ROAD, SUITE 300, DALLAS, TEXAS 75240
 (972) 701-9636 • (972) 701-9639 FAX
 DALLAS • CHARLOTTE • CHICAGO • DENVER • NEW ORLEANS • NEW YORK
 NEWPORT BEACH • ORLANDO • SCOTTSDALE • CHICAGO • TORONTO
 www.humphreys.com

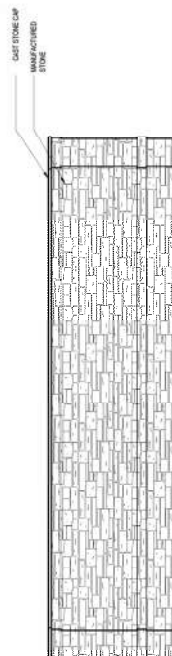
SHEET NO.:
 ENCLOSURE
 SHEET NO.

31 OF 31

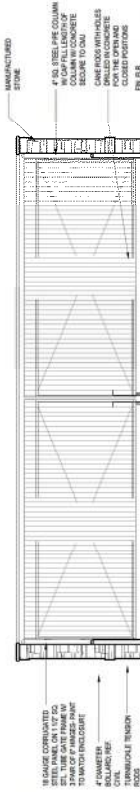
CITY FILE NO.
 CPC CU 19-00014



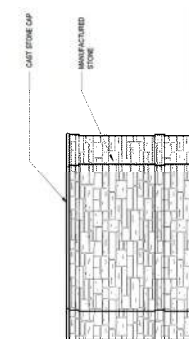
5 DUMPSTER ENCLOSURE PLAN
 SCALE: 1/4\"



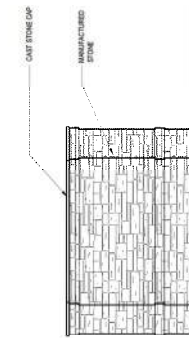
3 REAR ELEVATION
 SCALE: 1/4\"



4 FRONT ELEVATION
 SCALE: 1/4\"



2 LEFT ELEVATION
 SCALE: 1/4\"



1 RIGHT ELEVATION
 SCALE: 1/4\"

CITY STAMP

FIGURE 1