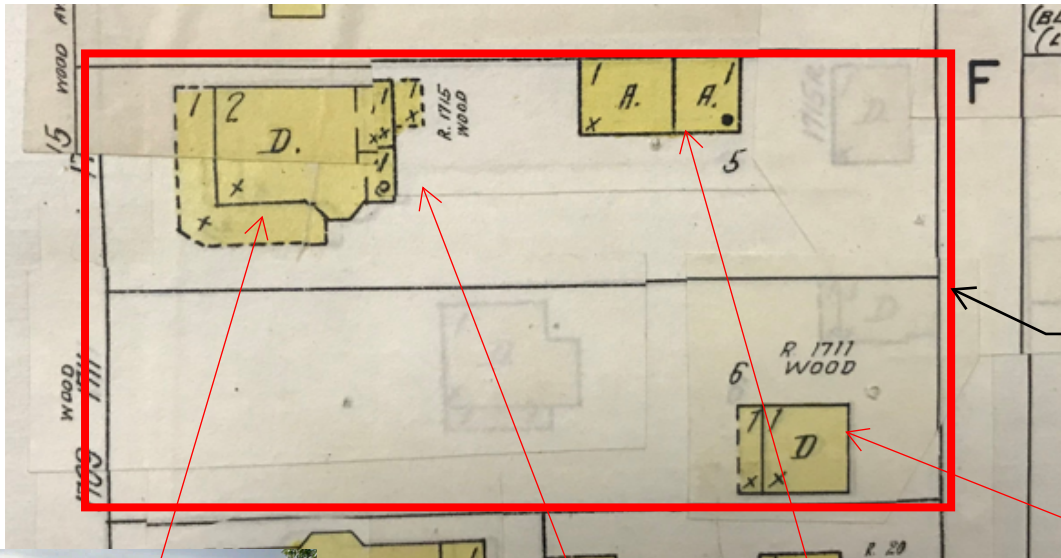


# SANBORN MAP



KEY	
Fire proof construction	Window opening in first story
Concrete, iron, steel or masonry	Window opening in second and third stories
Aluminum building	Window opening in second and fourth stories
Clown building	Window opening in second and fourth stories with wired glass
Concrete, iron, steel or masonry	Window opening in second and fourth stories with iron or tin clad shutters
Hollow concrete or cement block	Window opening in second and fourth stories with wired glass
Concrete or reinforced concrete	Window opening in second and fourth stories with iron or tin clad shutters
Brick building	Window opening in second and fourth stories with wired glass
Brick building with frame cornice	Window opening in second and fourth stories with iron or tin clad shutters
Brick building with frame cornice - none front	Window opening in second and fourth stories with iron or tin clad shutters
Brick building with frame cornice - none side	Window opening in second and fourth stories with iron or tin clad shutters
Brick veneered building	Window opening in second and fourth stories with iron or tin clad shutters
Brick building	Window opening in second and fourth stories with iron or tin clad shutters
Frame building brick lined	Window opening in second and fourth stories with iron or tin clad shutters
Frame building	Window opening in second and fourth stories with iron or tin clad shutters
Iron building	Window opening in second and fourth stories with iron or tin clad shutters
Frame building occupied by various manufacturing or occupations	Window opening in second and fourth stories with iron or tin clad shutters
Frame building covered with asbestos	Window opening in second and fourth stories with iron or tin clad shutters
Brick building with brick or metal cornice	Window opening in second and fourth stories with iron or tin clad shutters
Fire wall 6 inches above roof	Window opening in second and fourth stories with iron or tin clad shutters
Fire wall 12 inches above roof	Window opening in second and fourth stories with iron or tin clad shutters
Fire wall 18 inches above roof	Window opening in second and fourth stories with iron or tin clad shutters
Fire wall 24 inches above roof	Window opening in second and fourth stories with iron or tin clad shutters
Figures 8, 12, 16 indicate thickness of wall in inches	Window opening in second and fourth stories with iron or tin clad shutters
Wall without opening on floors as designated	Window opening in second and fourth stories with iron or tin clad shutters
Opening with single iron or tin clad door	Window opening in second and fourth stories with iron or tin clad shutters
Opening with double iron or tin clad door	Window opening in second and fourth stories with iron or tin clad shutters
Opening with wired glass doors	Window opening in second and fourth stories with iron or tin clad shutters
Openings with wired glass doors	Window opening in second and fourth stories with iron or tin clad shutters
Drives or passage way	Window opening in second and fourth stories with iron or tin clad shutters
Stable	Window opening in second and fourth stories with iron or tin clad shutters
Auto House or private garage	Window opening in second and fourth stories with iron or tin clad shutters
Solid brick with interior walls or C.B. or brick mixed	Window opening in second and fourth stories with iron or tin clad shutters
Mixed construction of C.B. and brick with one wall of solid brick	Window opening in second and fourth stories with iron or tin clad shutters
Mixed construction of C.B. and brick with one wall faced with C.B. brick	Window opening in second and fourth stories with iron or tin clad shutters
Mixed construction of C.B. and brick throughout	Window opening in second and fourth stories with iron or tin clad shutters
Open elevator	Window opening in second and fourth stories with iron or tin clad shutters
Frame enclosed elevator	Window opening in second and fourth stories with iron or tin clad shutters
Concrete block enclosed elevator with traps	Window opening in second and fourth stories with iron or tin clad shutters
Iron enclosed elevator with self closing traps	Window opening in second and fourth stories with iron or tin clad shutters
Brick enclosed elevator with wired glass door	Window opening in second and fourth stories with iron or tin clad shutters
Vertical steam boiler	Window opening in second and fourth stories with iron or tin clad shutters
Gasoline tank	Window opening in second and fourth stories with iron or tin clad shutters
Automatic fire alarm	Window opening in second and fourth stories with iron or tin clad shutters
Independent electric plant	Window opening in second and fourth stories with iron or tin clad shutters
Automatic sprinklers	Window opening in second and fourth stories with iron or tin clad shutters
Automatic chemical sprinklers	Window opening in second and fourth stories with iron or tin clad shutters
Automatic sprinklers part of building only	Window opening in second and fourth stories with iron or tin clad shutters
Not sprinklered	Window opening in second and fourth stories with iron or tin clad shutters
Outside vertical pipe on fire escape	Window opening in second and fourth stories with iron or tin clad shutters
Fire alarm box	Window opening in second and fourth stories with iron or tin clad shutters
Single hydrant	Window opening in second and fourth stories with iron or tin clad shutters
Double	Window opening in second and fourth stories with iron or tin clad shutters
Triple	Window opening in second and fourth stories with iron or tin clad shutters
Quadruple hydrant of the High Pressure Fire Service	Window opening in second and fourth stories with iron or tin clad shutters
Fire alarm box of the High Pressure Fire Service	Window opening in second and fourth stories with iron or tin clad shutters
Water pipes of the High Pressure Fire Service	Window opening in second and fourth stories with iron or tin clad shutters
Water pipes of private supply	Window opening in second and fourth stories with iron or tin clad shutters
House numbers shown nearest to buildings are official or actually up on buildings	Window opening in second and fourth stories with iron or tin clad shutters
House numbers shown furthest from buildings are old house numbers	Window opening in second and fourth stories with iron or tin clad shutters

SITE

