

TRUE NORTH COMMONS MASTER PLAN/CONCEPT PLAN

LAND SUITABILITY ANALYSIS



CONSULTANT:
 CIVIL ENGINEER:
 Matrix Design Group
 2435 Research Parkway, Suite 300
 Colorado Springs, CO 80920
 Phone 719-575-0100
 Fax 719-575-0208

ARCHITECT / PLANNER:
 Matrix Design Group
 1600 Blake Street, Suite 200
 Denver, CO 80202
 Phone 303-572-0200

PROJECT:
TRUE NORTH COMMONS
MASTER PLAN/CONCEPT PLAN
 CITY OF COLORADO SPRINGS
 DECEMBER, 2018

OWNER:
UNITED STATES AIR FORCE
 CONTACT: COLONEL SHAWN W. CAMPBELL
 US AIR FORCE ACADEMY
 8034 EDGERTON DRIVE, SUITE 200
 USAF ACADEMY, CO, 80840

DEVELOPER:

BLUE & SILVER
 DEVELOPMENT PARTNERS, LLC
BLUE & SILVER DEVELOPMENT
PARTNERS, LLC.
 CONTACT: DAN SCHNEPF, PE
 2435 RESEARCH PKWY, SUITE 300
 COLORADO SPRINGS, CO 80920

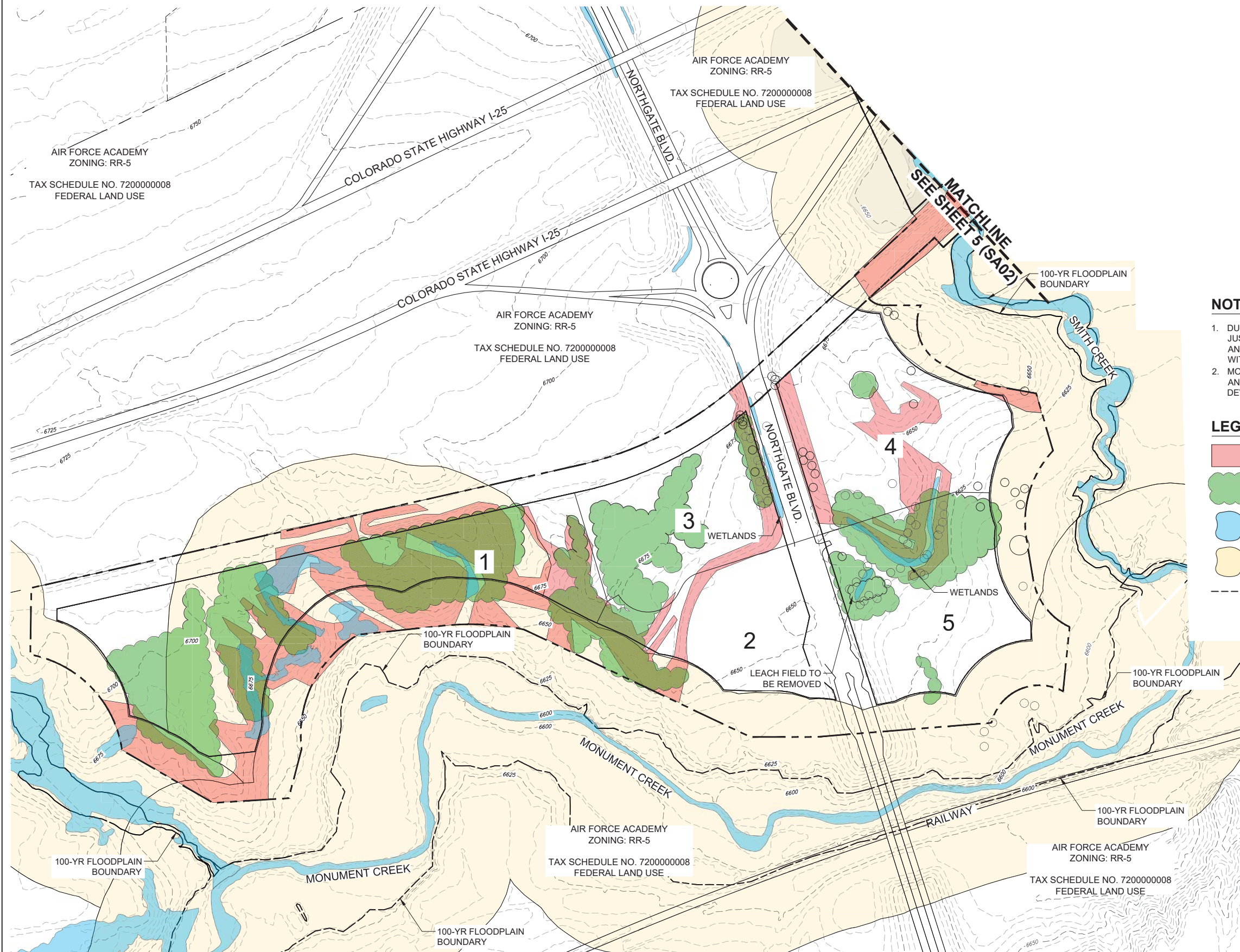
ISSUE:
 2018-09-21

DRAWING INFORMATION:
 PROJECT NO: 18.1000.001
 DRAWN BY: SAMANTHA MOCK
 CHECKED BY: THOMAS KOPF
 APPROVED BY: GREGORY SHANER
 SHEET TITLE: LAND SUITABILITY ANALYSIS

CITY PLANNING MP FILE NO: CPC MP 18-00138
 CITY PLANNING CP FILE NO: CPC PUP 18-00177

SA01

SHEET 4 OF 5

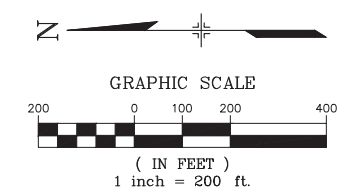


NOTES

1. DURING THE DEVELOPMENT PLAN REVIEW PROCESS, JUSTIFICATION FOR THE STREAMSIDE REVIEW CRITERIA AND CALCULATIONS OF THE IMPERVIOUS SURFACE WITHIN THE STREAM BUFFER WILL BE REQUIRED.
2. MOUSE HABITAT HAS BEEN IDENTIFIED WITHIN THE ANNEXATION BOUNDARY, BUT IS NOT WITHIN THE DEVELOPABLE ACREAGE.

LEGEND

- SLOPES 15 % AND GREATER
- VEGETATION
- WETLANDS
- MOUSE HABITAT
- 100-YR FLOODPLAIN BOUNDARY



CPC MP 18-00138
 CPC PUP 18-00177

TRUE NORTH COMMONS MASTER PLAN/CONCEPT PLAN

LAND SUITABILITY ANALYSIS



CONSULTANT:
 CIVIL ENGINEER:
 Matrix Design Group
 2435 Research Parkway, Suite 300
 Colorado Springs, CO 80920
 Phone 719-575-0100
 Fax 719-575-0208

ARCHITECT / PLANNER:
 Matrix Design Group
 1600 Blake Street, Suite 200
 Denver, CO 80202
 Phone 303-572-0200

PROJECT:
TRUE NORTH COMMONS
MASTER PLAN/CONCEPT PLAN
 CITY OF COLORADO SPRINGS
 DECEMBER, 2018

OWNER:
UNITED STATES AIR FORCE
 CONTACT: COLONEL SHAWN W. CAMPBELL
 US AIR FORCE ACADEMY
 8034 EDGERTON DRIVE, SUITE 200
 USAF ACADEMY, CO, 80840

DEVELOPER:

BLUE & SILVER DEVELOPMENT PARTNERS, LLC.
 CONTACT: DAN SCHNEPF, PE
 2435 RESEARCH PKWY, SUITE 300
 COLORADO SPRINGS, CO 80920

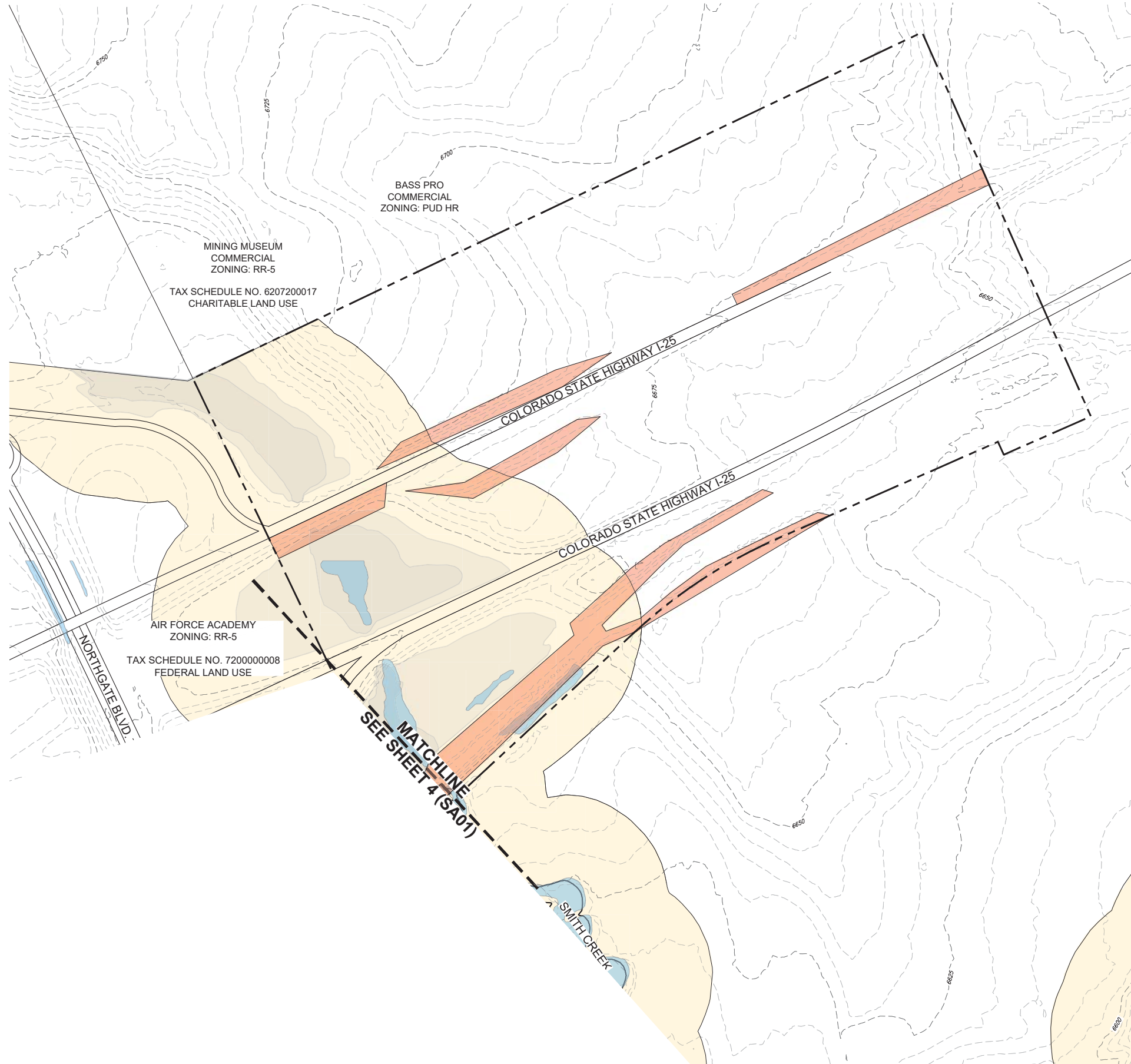
ISSUE:
 2018-09-21

DRAWING INFORMATION:
 PROJECT NO: 18.1000.001
 DRAWN BY: SAMANTHA MOCK
 CHECKED BY: THOMAS KOPF
 APPROVED BY: GREGORY SHANER
 SHEET TITLE: LAND SUITABILITY ANALYSIS

CITY PLANNING MP FILE NO: CPC MP 18-00138
 CITY PLANNING CP FILE NO: CPC PUP 18-00177

SA02

SHEET 5 OF 5

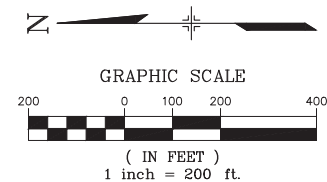


NOTES

1. DURING THE DEVELOPMENT PLAN REVIEW PROCESS, JUSTIFICATION FOR THE STREAMSIDE REVIEW CRITERIA AND CALCULATIONS OF THE IMPERVIOUS SURFACE WITHIN THE STREAM BUFFER WILL BE REQUIRED.
2. MOUSE HABITAT HAS BEEN IDENTIFIED WITHIN THE ANNEXATION BOUNDARY, BUT IS NOT WITHIN THE DEVELOPABLE ACREAGE.

LEGEND

- SLOPES 15 % AND GREATER
- VEGETATION
- WETLANDS
- MOUSE HABITAT
- 100-YR FLOODPLAIN BOUNDARY



CPC MP 18-00138
 CPC PUP 18-00177