

REVISION	DATE	BY	DESCRIPTION
REV 1	11.18.19	STR	1.1.19 RESPONSE TO COMMENTS
REV 2	5.6.19	STR	2.1.19 RESPONSE TO COMMENTS
REV 3	7.09.19	STR	3.1.19 RESPONSE TO COMMENTS
REV 4			
REV 5			

NO	DATE	BY	DESCRIPTION
0			
1			
2			
3			
4			
5			

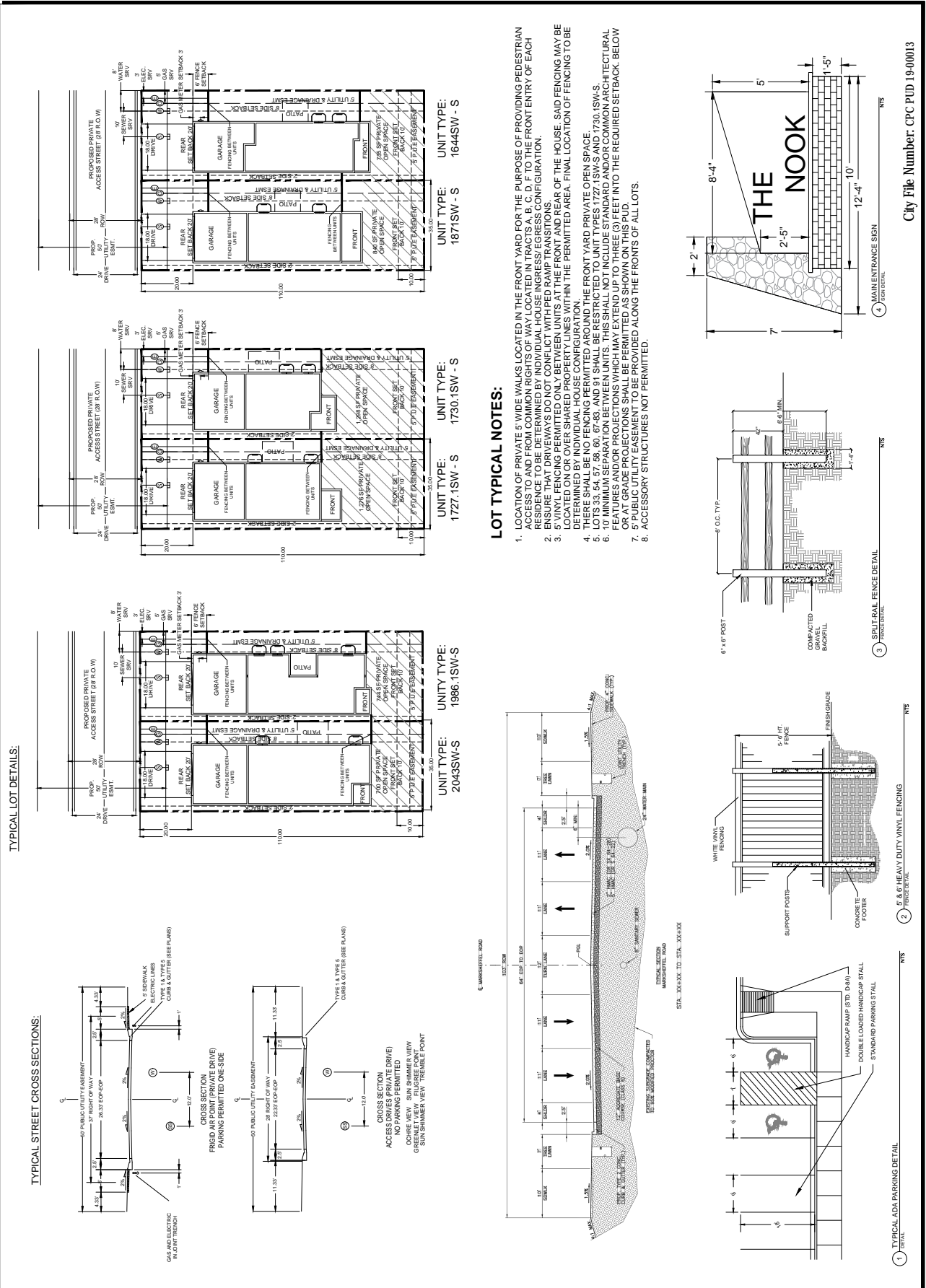
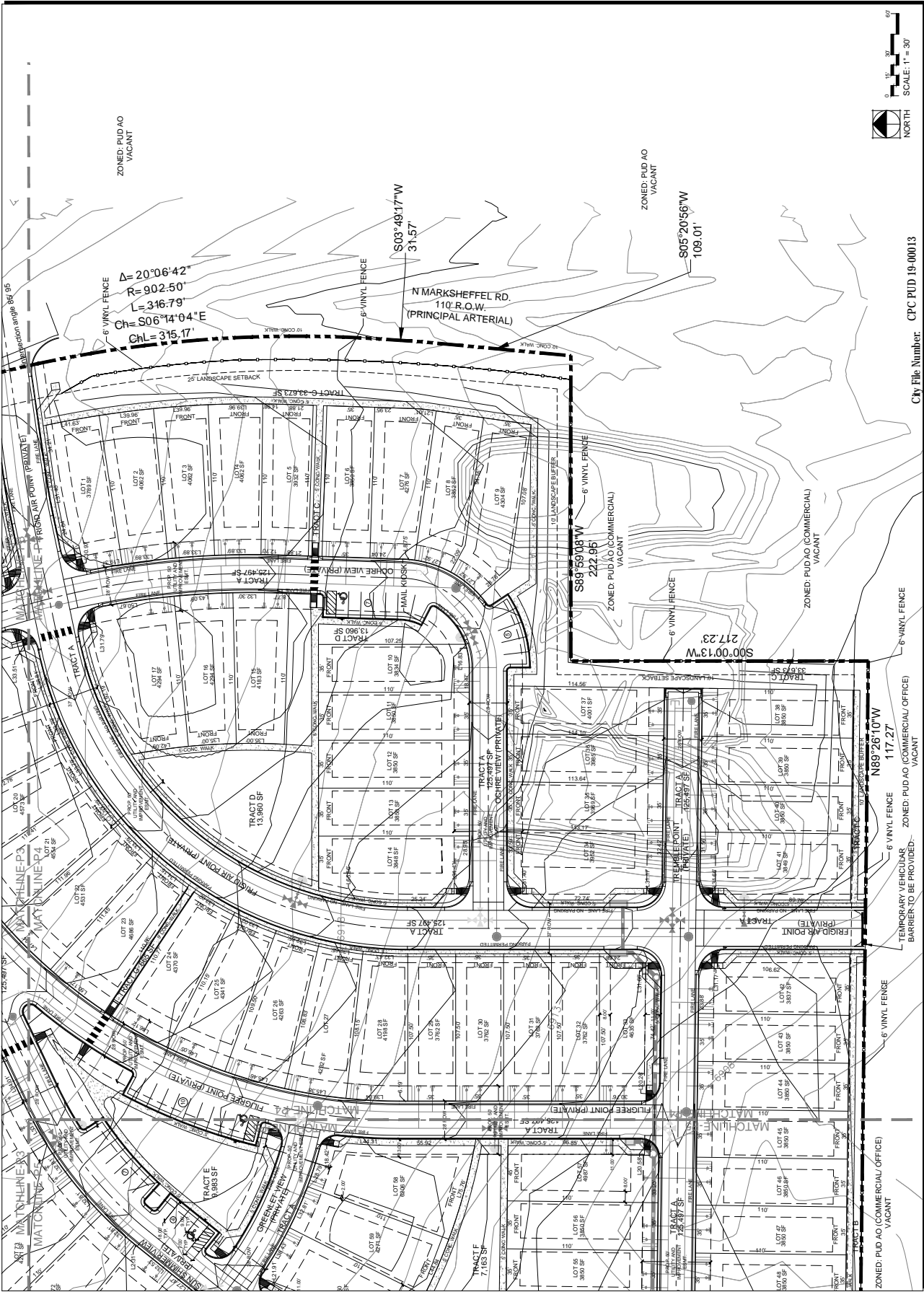


FIGURE 4

REV #	DATE	REVISIONS
0		
1		
2		
3		
4		
5		
6		

DESCRIPTION	SUB	DATE
DRAWN	SJR	1.18.19
CHECKED	JMR	1.18.19
PROJECT NUMBER		3815.00



City File Number: **CPC PUD 19-00013**

FIGURE 4

REV #	REVISIONS	DATE
1	REV1: RESPONSE TO COMMENTS	4.1.19
2	REV2: RESPONSE TO COMMENTS	5.6.19
3	REV3: RESPONSE TO COMMENTS	7.09.19
4	REV4: RESPONSE TO COMMENTS	7.25.19

REVISIONS	DATE	BY
1	4.1.19	STR
2	5.6.19	STR
3	7.09.19	STR
4	7.25.19	STR

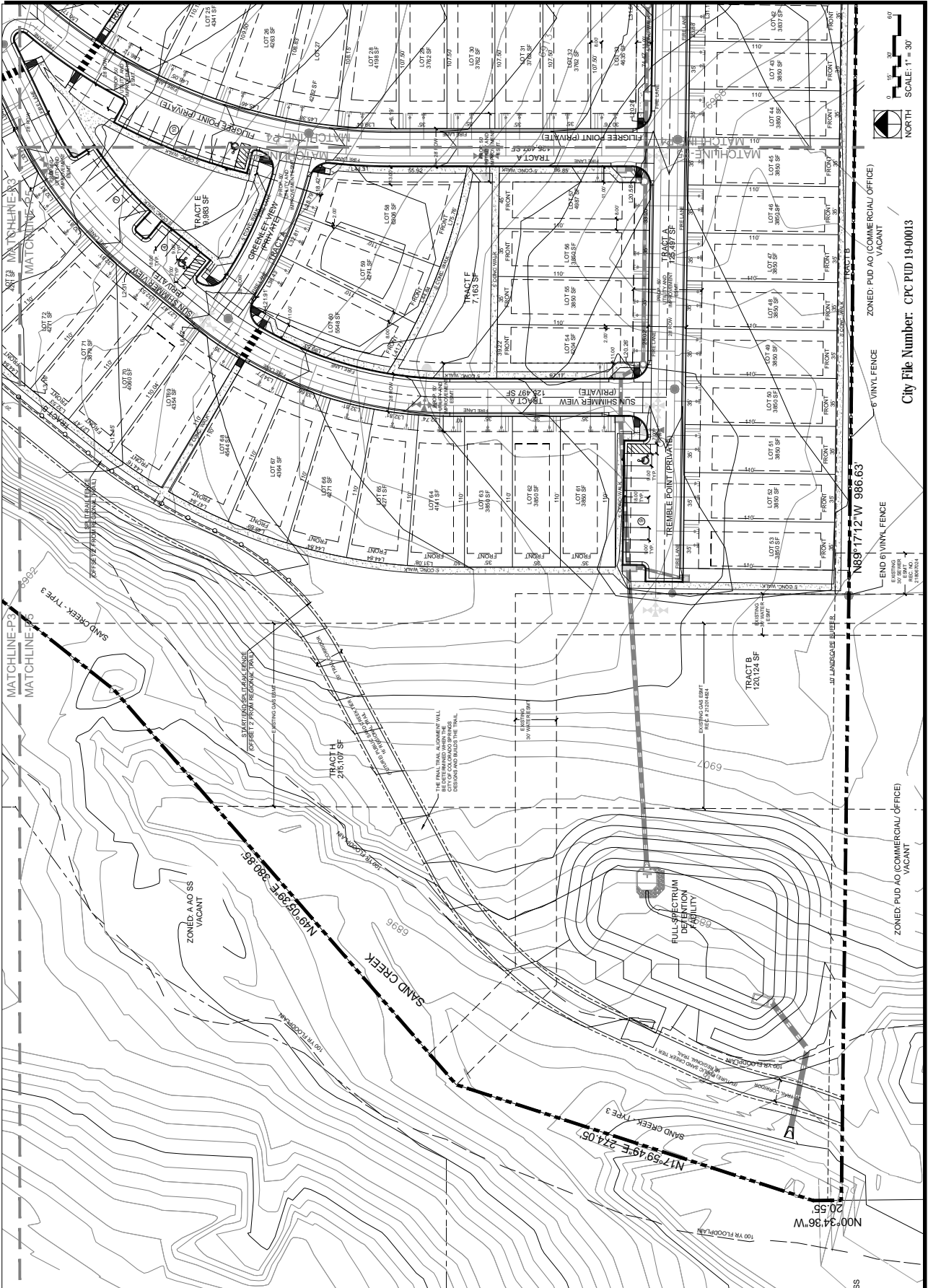
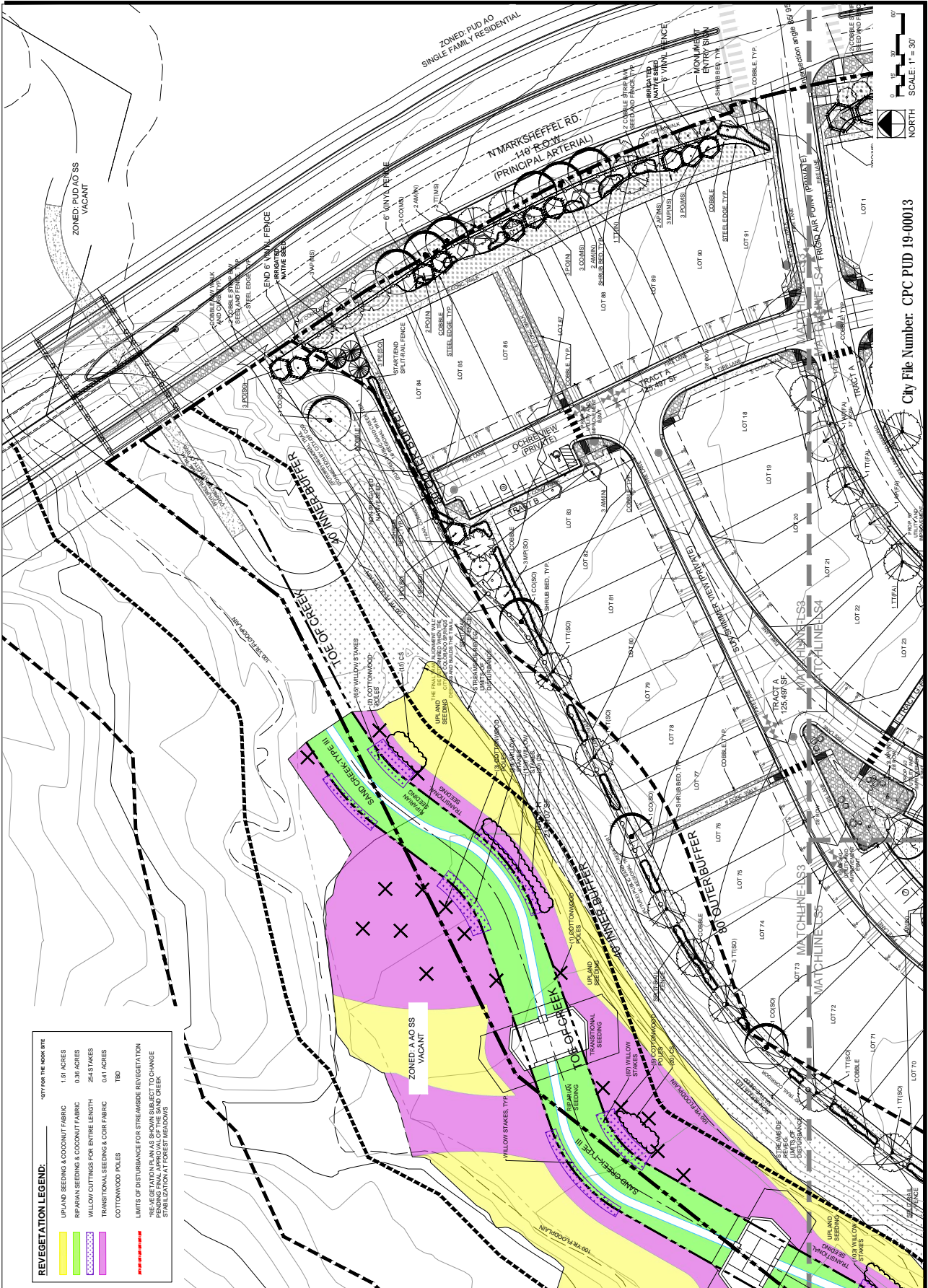


FIGURE 4

SCALE	AS NOTED
PROJECT NUMBER	3815.00
CHECKED	JBA 01.18.18
DRAWN	SJS 01.18.18
DESIGNED	SJS 01.18.18



REVEGETATION LEGEND:

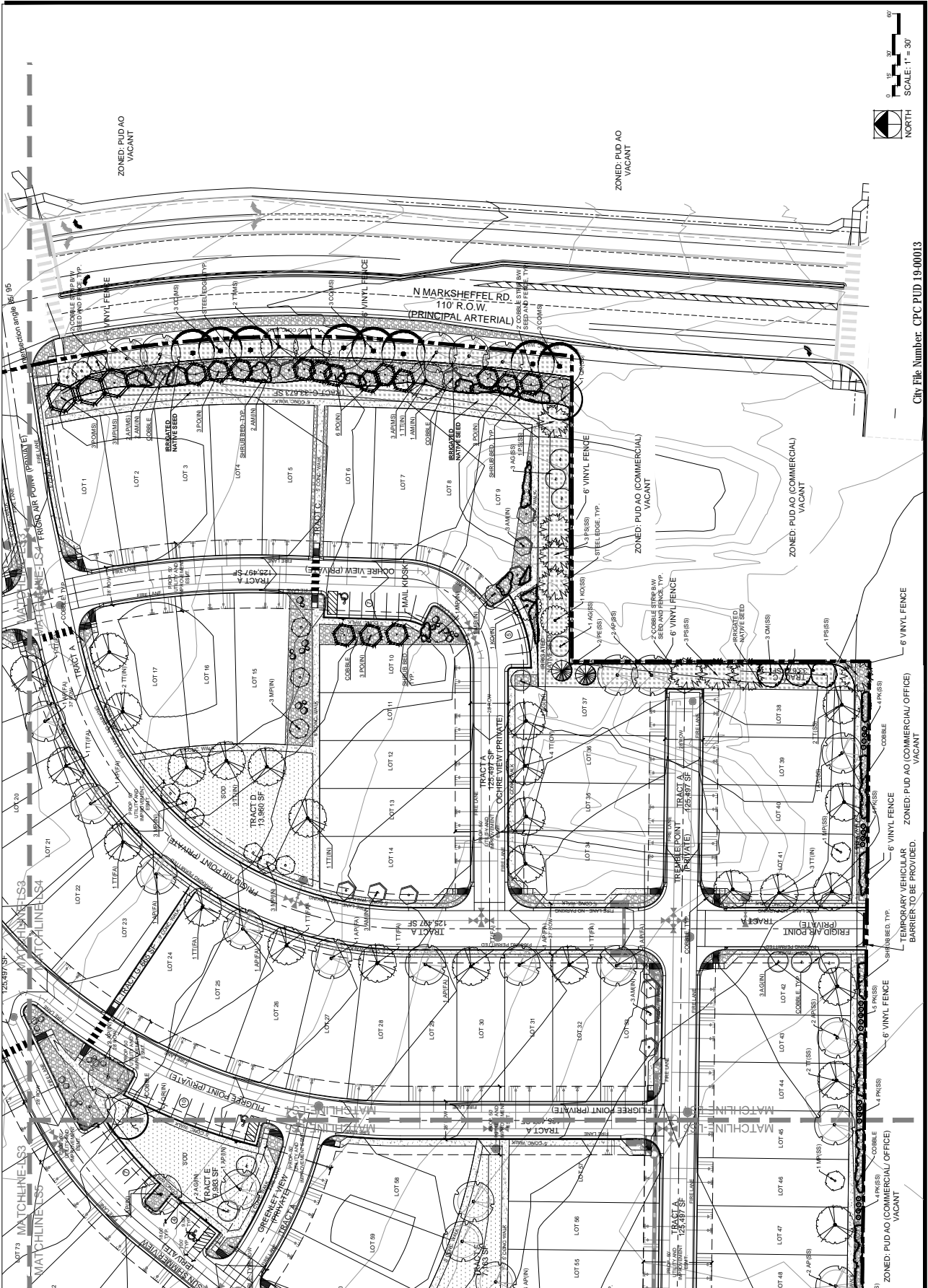
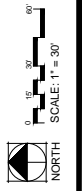
- UPLAND SEEDING & COCONUT FABRIC: 1.51 ACRES
- RIPARIAN SEEDING & COCONUT FABRIC: 0.36 ACRES
- WILLOW CUTTINGS FOR ENTIRE LENGTH: 264 STAKES
- TRANSITIONAL SEEDING & COIR FABRIC: 0.41 ACRES
- COTTONWOOD POLES: TBD

LIMITS OF DISTURBANCE FOR STREAMSIDE REVEGETATION
 *RELIEGE PATION IS A LAS DESIGN SUBJECT TO CHANGE
 PENDING FINAL APPROVAL OF THE SAND CREEK
 STABILIZATION AT FOREST MEADOWS

City File Number: CPC PUD 19-00013

NORTH
 SCALE: 1" = 30'

FIGURE 4



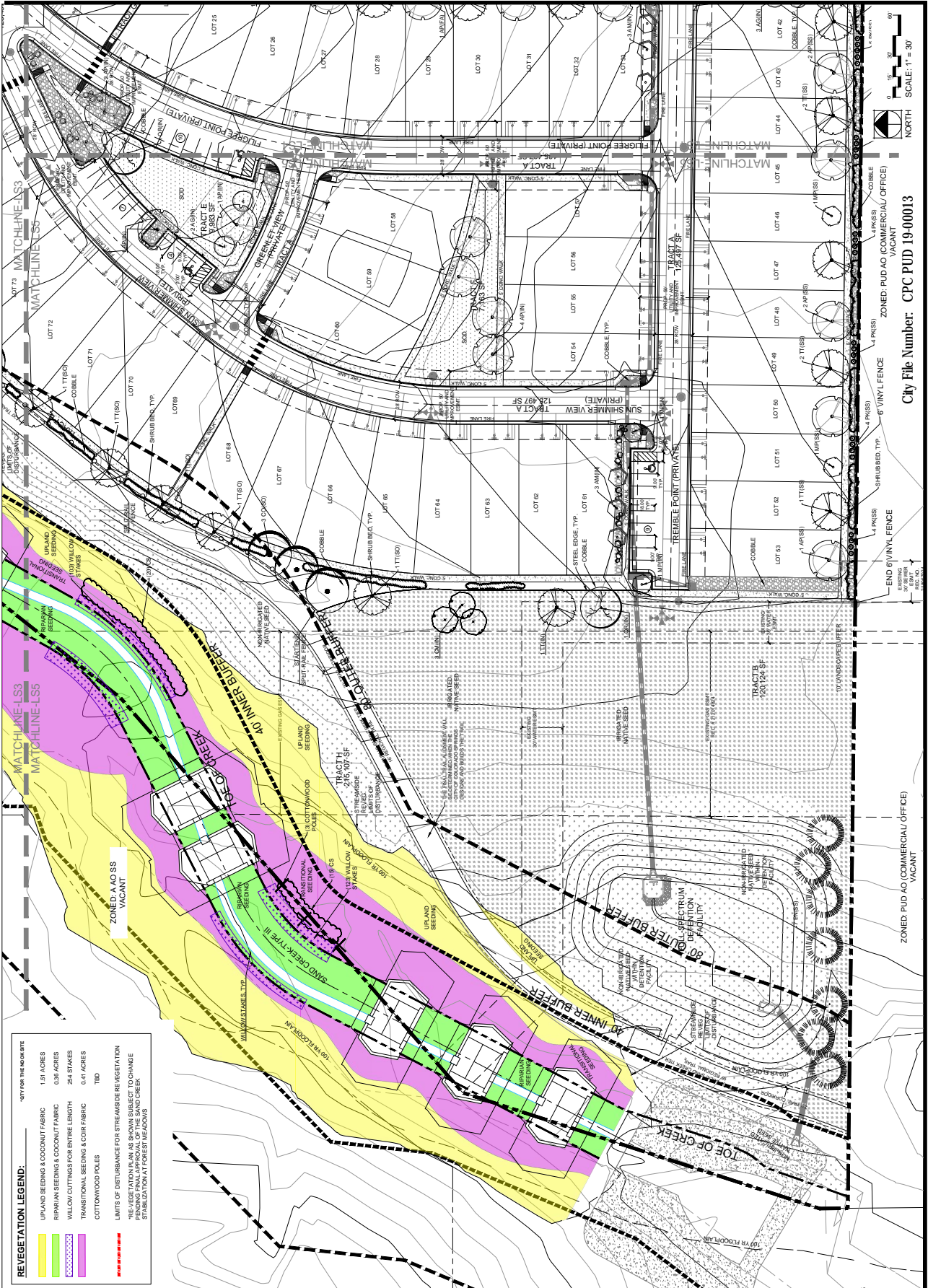
City File Number: CPC PUD 19-00013

FIGURE 4

REV #	RESPONSES	DATE
1	REV1 RESPONSE TO COMMENTS	04.01.18
2	REV2 RESPONSE TO COMMENTS	04.10.18
3	REV3 RESPONSE TO COMMENTS	04.12.18
4	REV4 RESPONSE TO COMMENTS	04.12.18
5		
6		

SCALE	AS NOTED
PROJECT NUMBER	3815.00
CHECKED	JBA 01.18.18
DRAWN	SJS 01.18.18
DESIGNED	SJS 01.18.18

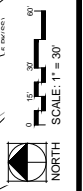
12 OF 25
LS55



REVEGETATION LEGEND:

	UPLAND SEEDING & COCONUT FABRIC	1.51 ACRES
	RIPARIAN SEEDING & COCONUT FABRIC	0.38 ACRES
	WILLOW CUTTINGS FOR ENTIRE LENGTH	254 STAKES
	TRANSITIONAL SEEDING & COIR FABRIC	0.41 ACRES
	COCONUT FABRIC	TBD

LIMITS OF DISTURBANCE FOR STREAMBANK REVEGETATION
 PRE-VEGETATION AS SHOWN SUBJECT TO CHANGE
 STABILIZATION AT FOREST MEADOWS

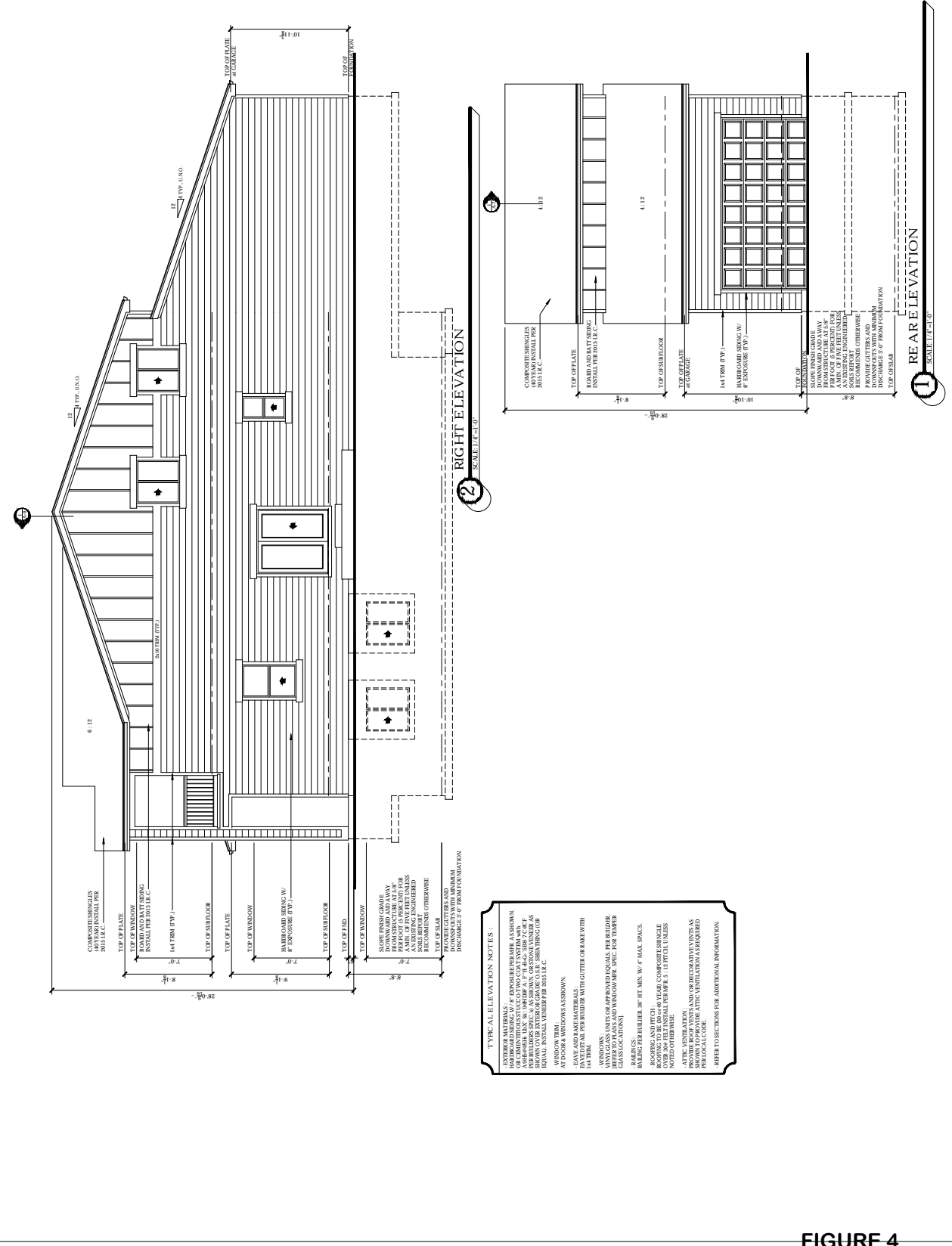


City File Number: CPC PUD 19-00013
 ZONED: PUD AO (COMMERCIAL) OFFICE
 VACANT

ZONED: PUD AO (COMMERCIAL) OFFICE
 VACANT

FIGURE 4

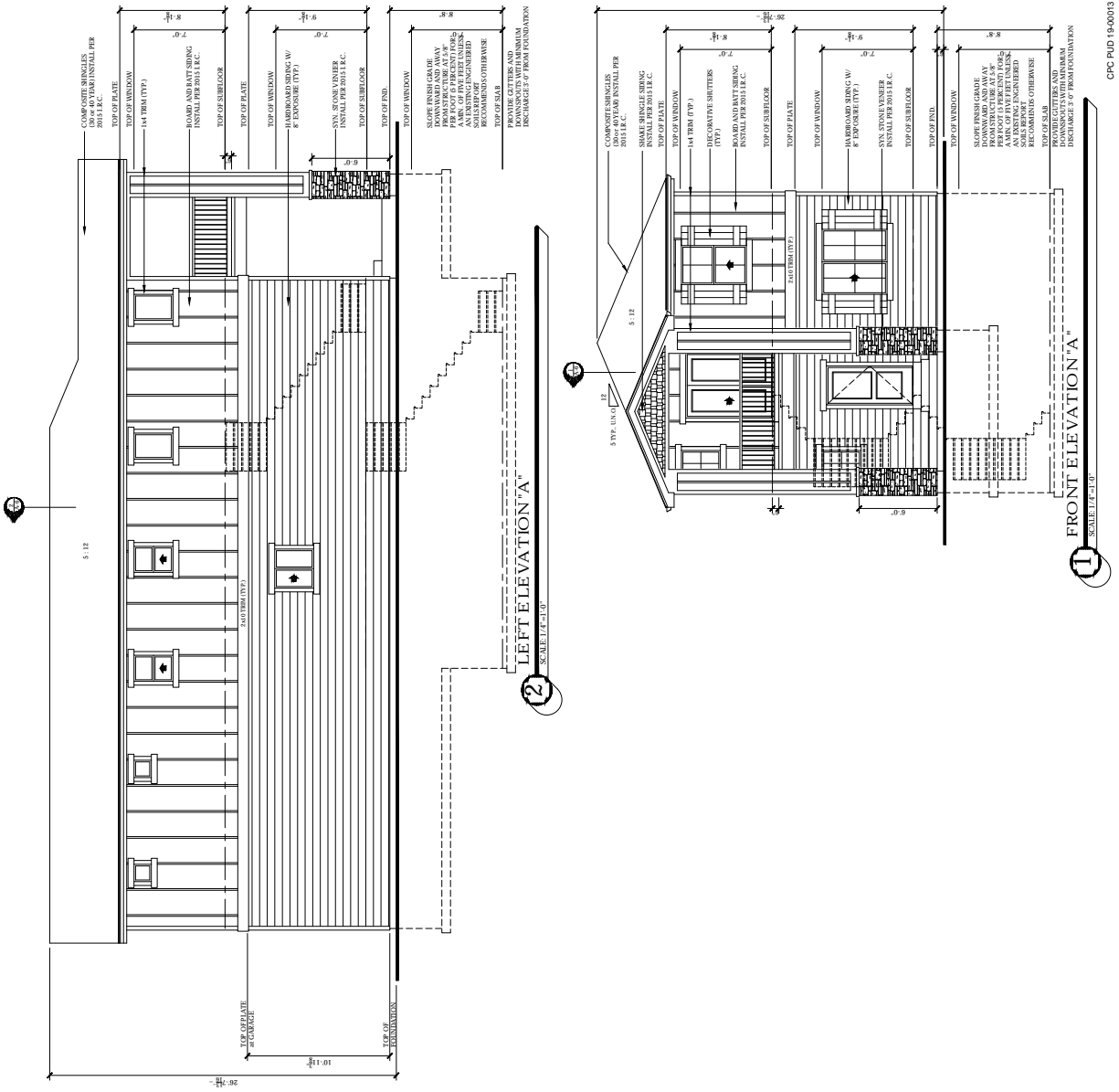
ELEVATIONS
 ASPEN VIEW HOMES, LLC
 555 Maple Creek Pkwy., Suite 300, Colo. Spgs., Colorado 80901
 Office: (719) 582-0433 www.aspenviewhomes.com
 1644-S
 09/04/18
 CMB
 CMB
 A - 6
 15 OF 25



TYPICAL ELEVATION NOTES:

- EXTERIOR MATERIALS: EXPOSURE GRADE AS SHOWN
- ORIENTED STRAND BOARD (OSB) SHEATHING SHALL BE PER BUILDERS SPEC. AS SHOWN, OR EQUIVALENT AS APPROVED BY ARCHITECT. OSB SHEATHING FOR EQUALS SHALL INSTALL UNDER PER 2011 I.C.
- WINDOW TRIM: AT DOOR WINDOWS AS SHOWN
- WINDOWS: UNITS OR APPROVED EQUALS PER BUILDER REFER TO PLANS AND WINDOW MFR. SPEC. FOR TEMPER, WEIGHT, AND FINISH.
- ROOFING: ROOFING SHALL BE AS SHOWN, COMPACT GRANULE COVER 30% FILL INSTALL PER M.P.E. IF FIT GL UNLESS NOTED OTHERWISE.
- PRELIMINARY VENTILATION: PRELIMINARY VENTILATION AS SHOWN PER 2011 I.C. OSB.
- REFER TO SPECIFICATIONS FOR ADDITIONAL INFORMATION.

FIGURE 4



TYPICAL ELEVATION NOTES:
 INTERIOR MATERIALS: INTERIOR MATERIALS ARE SHOWN ON CHANGELINE. SEE FINISH SCHEDULE FOR FINISHES. FINISHES SHOWN OVER EXTERIOR GRADE OR SLAB SHEATHING OR WINDOW TRIM.
 AT DOOR & WINDOW ASHONS:
 - HAVE HANDRAIL MATERIALS:
 - 1/4" TRIM AND PERIMETER WITH GUTTER OR RAKE WITH 1/4" TRIM.
 WINDOWS:
 - FINISHES ARE SHOWN ON CHANGELINE. REFER TO FINISH SCHEDULE FOR FINISHES AND WINDOW TRIM. SEE FINISH SCHEDULE FOR TRIM GLASS ELEGATIONS.
 BALCONY RAILING:
 - RAILING FOR BALCONY SHALL BE 4" MAX. SPACES.
 ROOFING AND PITCH:
 - ROOFING TO BE 1/2" OSB OR 40 YEAR COMPOSITE SHINGLE WITH 1/2" OSB OR 40 YEAR COMPOSITE SHINGLE. REFER TO PLAN AND WINDOW TRIM. SEE FINISH SCHEDULE FOR TRIM GLASS ELEGATIONS.
 - AT TIC VENTILATION: 1" AIR OR PERFORATIVE UNIT AS SHOWN TO PROVIDE ATIC VENTILATION AS REQUIRED BY LOCAL CODE.
 REFER TO SECTIONS FOR ADDITIONAL INFORMATION.

FIGURE 4

