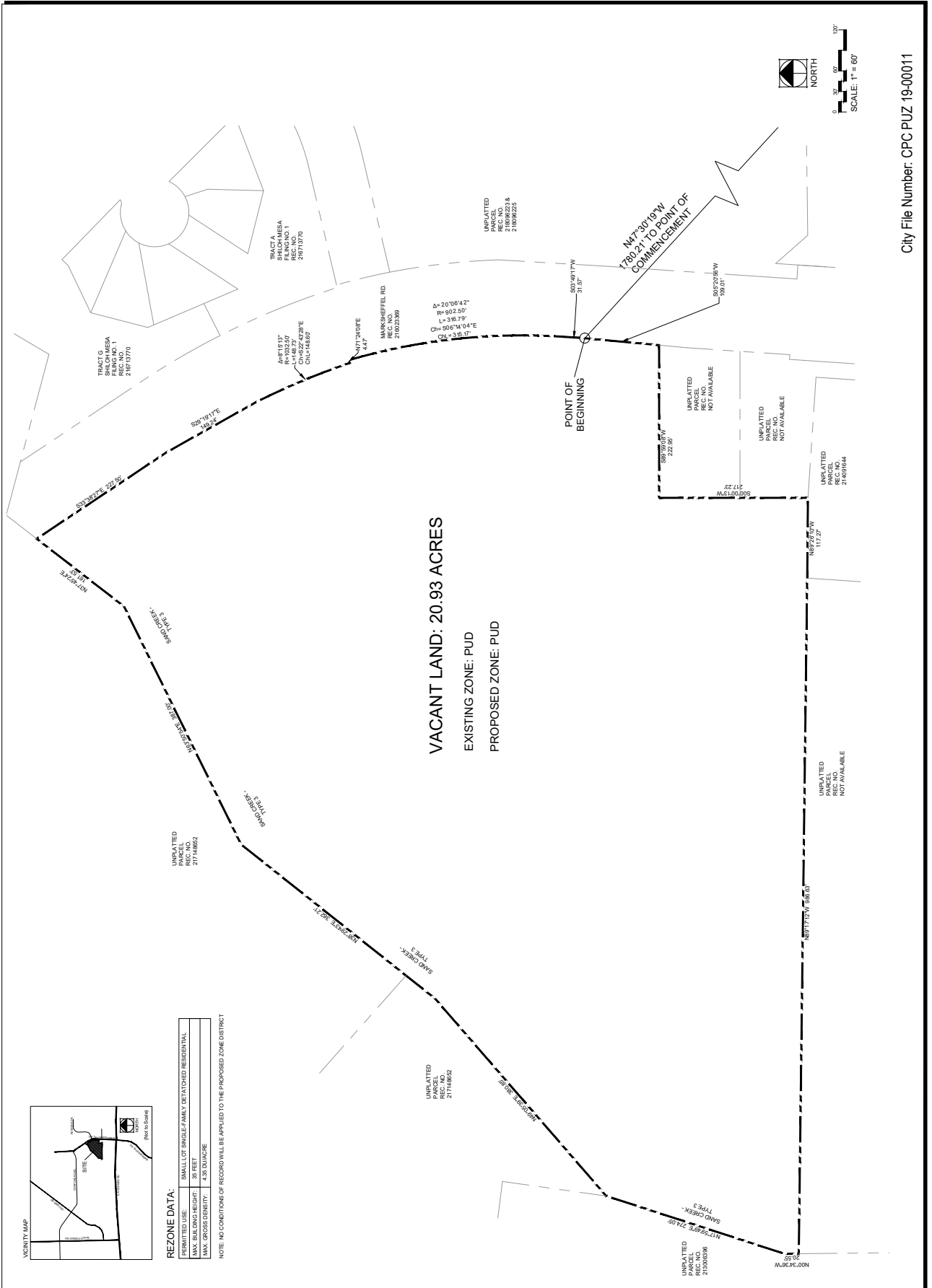
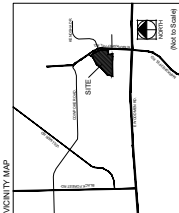


REV #	DATE	REVISIONS
1	04.01.19	REV1 - RESPONSE TO COMMENTS
2	04.25.19	REV2 - RESPONSE TO COMMENTS
3	06.12.19	REV3 - RESPONSE TO COMMENTS
4		
5		

DESIGNED	DRAWN	CHECKED	PROJECT NUMBER
STB 11.18.19	STB 11.18.19	JMK 11.18.19	2815.00



City File Number: CPC PUZ 19-00011



REZONE DATA:
 PERMITTED USE: SMALL LOT SINGLE FAMILY DETACHED RESIDENTIAL
 MAX. BUILDING HEIGHT: 30 FEET
 MAX. GROSS DENSITY: 4.35 DW/ACRE
 NOTE: NO CONDITIONS OF RECORD WILL BE APPLIED TO THE PROPOSED ZONE DISTRICT

EXHIBIT B

**THE NOOK AT SHILOH MESA
REZONE LEGAL DESCRIPTION EXHIBIT A**

BASIS OF BEARINGS: THE SOUTHLINE OF THE SOUTHWEST QUARTER (SW1/4) OF SECTION 4, TOWNSHIP 13 SOUTH, RANGE 65 WEST OF THE 6TH PRINCIPAL MERIDIAN, EL PASO COUNTY, COLORADO. THE SECTION CORNER OF SAID SW1/4 QUARTER IS THE POINT OF BEGINNING. THE SECTION CORNER IS A 1.5 INCH ALUMINUM CAPS (LAMPED "L37064", BRAND NIP78" 95", A DISTANCE OF 29.535 FEET.

LEGAL DESCRIPTION:

A PARCEL OF LAND IN THE SOUTHWEST QUARTER (SW 1/4) OF SECTION 4, TOWNSHIP 13 SOUTH, RANGE 65 WEST OF THE 6TH PRINCIPAL MERIDIAN, E. EL PASO COUNTY, COLORADO MORE PARTICULAR DESCRIBED AS FOLLOWS, COMMENCING AT THE QUARTER CORNER COMMON TO SECTIONS 4 AND 9 OF SECTION 4, TOWNSHIP 13 SOUTH, RANGE 65 WEST OF THE 6TH PRINCIPAL MERIDIAN, EL PASO COUNTY, COLORADO. THE SECTION CORNER OF SAID SW1/4 QUARTER IS THE POINT OF BEGINNING. THE SECTION CORNER IS A 1.5 INCH ALUMINUM CAPS (LAMPED "L37064", BRAND NIP78" 95", A DISTANCE OF 29.535 FEET. FROM WHICH THE QUARTER CORNER COMMON TO SECTIONS 4 AND 9 BEING MONUMENTED WITH A 2.5" ALUMINUM CAPS (LAMPED "L37064", BRAND NIP78" 95", A DISTANCE OF 29.535 FEET.

THENCE ALONG SAID RIGHT-OF-WAY 502.00' 00" W A DISTANCE OF 10.000 FEET;

THENCE ALONG SAID RIGHT-OF-WAY 502.00' 00" W A DISTANCE OF 11.277 FEET;

THENCE NIP78.00' 00" W A DISTANCE OF 30.155 FEET;

THENCE NIP78.00' 00" W A DISTANCE OF 30.155 FEET;

THENCE NIP78.00' 00" W A DISTANCE OF 30.155 FEET;

THENCE NIP78.00' 00" W A DISTANCE OF 30.155 FEET;

THENCE NIP78.00' 00" W A DISTANCE OF 30.155 FEET;

THENCE NIP78.00' 00" W A DISTANCE OF 30.155 FEET;

THENCE NIP78.00' 00" W A DISTANCE OF 30.155 FEET;

THENCE NIP78.00' 00" W A DISTANCE OF 30.155 FEET;

THENCE NIP78.00' 00" W A DISTANCE OF 30.155 FEET;

THENCE NIP78.00' 00" W A DISTANCE OF 30.155 FEET;

THENCE NIP78.00' 00" W A DISTANCE OF 30.155 FEET;

THENCE NIP78.00' 00" W A DISTANCE OF 30.155 FEET;

THENCE NIP78.00' 00" W A DISTANCE OF 30.155 FEET;

THENCE NIP78.00' 00" W A DISTANCE OF 30.155 FEET;

THENCE NIP78.00' 00" W A DISTANCE OF 30.155 FEET;

THENCE NIP78.00' 00" W A DISTANCE OF 30.155 FEET;

THENCE NIP78.00' 00" W A DISTANCE OF 30.155 FEET;

THENCE NIP78.00' 00" W A DISTANCE OF 30.155 FEET;

THENCE NIP78.00' 00" W A DISTANCE OF 30.155 FEET;

THENCE NIP78.00' 00" W A DISTANCE OF 30.155 FEET;

THENCE NIP78.00' 00" W A DISTANCE OF 30.155 FEET;

THENCE NIP78.00' 00" W A DISTANCE OF 30.155 FEET;

THENCE NIP78.00' 00" W A DISTANCE OF 30.155 FEET;

THENCE NIP78.00' 00" W A DISTANCE OF 30.155 FEET;

THENCE NIP78.00' 00" W A DISTANCE OF 30.155 FEET;

THENCE NIP78.00' 00" W A DISTANCE OF 30.155 FEET;

THENCE NIP78.00' 00" W A DISTANCE OF 30.155 FEET;

THENCE NIP78.00' 00" W A DISTANCE OF 30.155 FEET;

THENCE NIP78.00' 00" W A DISTANCE OF 30.155 FEET;

THENCE NIP78.00' 00" W A DISTANCE OF 30.155 FEET;

THENCE NIP78.00' 00" W A DISTANCE OF 30.155 FEET;

THENCE NIP78.00' 00" W A DISTANCE OF 30.155 FEET;

THENCE NIP78.00' 00" W A DISTANCE OF 30.155 FEET;

THENCE NIP78.00' 00" W A DISTANCE OF 30.155 FEET;

THENCE NIP78.00' 00" W A DISTANCE OF 30.155 FEET;

THENCE NIP78.00' 00" W A DISTANCE OF 30.155 FEET;

THENCE NIP78.00' 00" W A DISTANCE OF 30.155 FEET;

THENCE NIP78.00' 00" W A DISTANCE OF 30.155 FEET;

THENCE NIP78.00' 00" W A DISTANCE OF 30.155 FEET;

THENCE NIP78.00' 00" W A DISTANCE OF 30.155 FEET;

THENCE NIP78.00' 00" W A DISTANCE OF 30.155 FEET;

THENCE NIP78.00' 00" W A DISTANCE OF 30.155 FEET;

THENCE NIP78.00' 00" W A DISTANCE OF 30.155 FEET;

THENCE NIP78.00' 00" W A DISTANCE OF 30.155 FEET;

THENCE NIP78.00' 00" W A DISTANCE OF 30.155 FEET;

THENCE NIP78.00' 00" W A DISTANCE OF 30.155 FEET;

THENCE NIP78.00' 00" W A DISTANCE OF 30.155 FEET;

THENCE NIP78.00' 00" W A DISTANCE OF 30.155 FEET;

THENCE NIP78.00' 00" W A DISTANCE OF 30.155 FEET;

THENCE NIP78.00' 00" W A DISTANCE OF 30.155 FEET;

THENCE NIP78.00' 00" W A DISTANCE OF 30.155 FEET;

THENCE NIP78.00' 00" W A DISTANCE OF 30.155 FEET;

THENCE NIP78.00' 00" W A DISTANCE OF 30.155 FEET;

THENCE NIP78.00' 00" W A DISTANCE OF 30.155 FEET;

THENCE NIP78.00' 00" W A DISTANCE OF 30.155 FEET;

THENCE NIP78.00' 00" W A DISTANCE OF 30.155 FEET;

THENCE NIP78.00' 00" W A DISTANCE OF 30.155 FEET;

THENCE NIP78.00' 00" W A DISTANCE OF 30.155 FEET;

THENCE NIP78.00' 00" W A DISTANCE OF 30.155 FEET;

THENCE NIP78.00' 00" W A DISTANCE OF 30.155 FEET;

THENCE NIP78.00' 00" W A DISTANCE OF 30.155 FEET;

THENCE NIP78.00' 00" W A DISTANCE OF 30.155 FEET;

THENCE NIP78.00' 00" W A DISTANCE OF 30.155 FEET;

THENCE NIP78.00' 00" W A DISTANCE OF 30.155 FEET;

THENCE NIP78.00' 00" W A DISTANCE OF 30.155 FEET;

THENCE NIP78.00' 00" W A DISTANCE OF 30.155 FEET;

THENCE NIP78.00' 00" W A DISTANCE OF 30.155 FEET;

THENCE NIP78.00' 00" W A DISTANCE OF 30.155 FEET;

THENCE NIP78.00' 00" W A DISTANCE OF 30.155 FEET;

THENCE NIP78.00' 00" W A DISTANCE OF 30.155 FEET;

THENCE NIP78.00' 00" W A DISTANCE OF 30.155 FEET;

THENCE NIP78.00' 00" W A DISTANCE OF 30.155 FEET;

FIGURE 3