

# Acquisition of Approximately 31.918 acres for the Expansion of Cheyenne Mountain State Park

City Council  
April 23, 2018



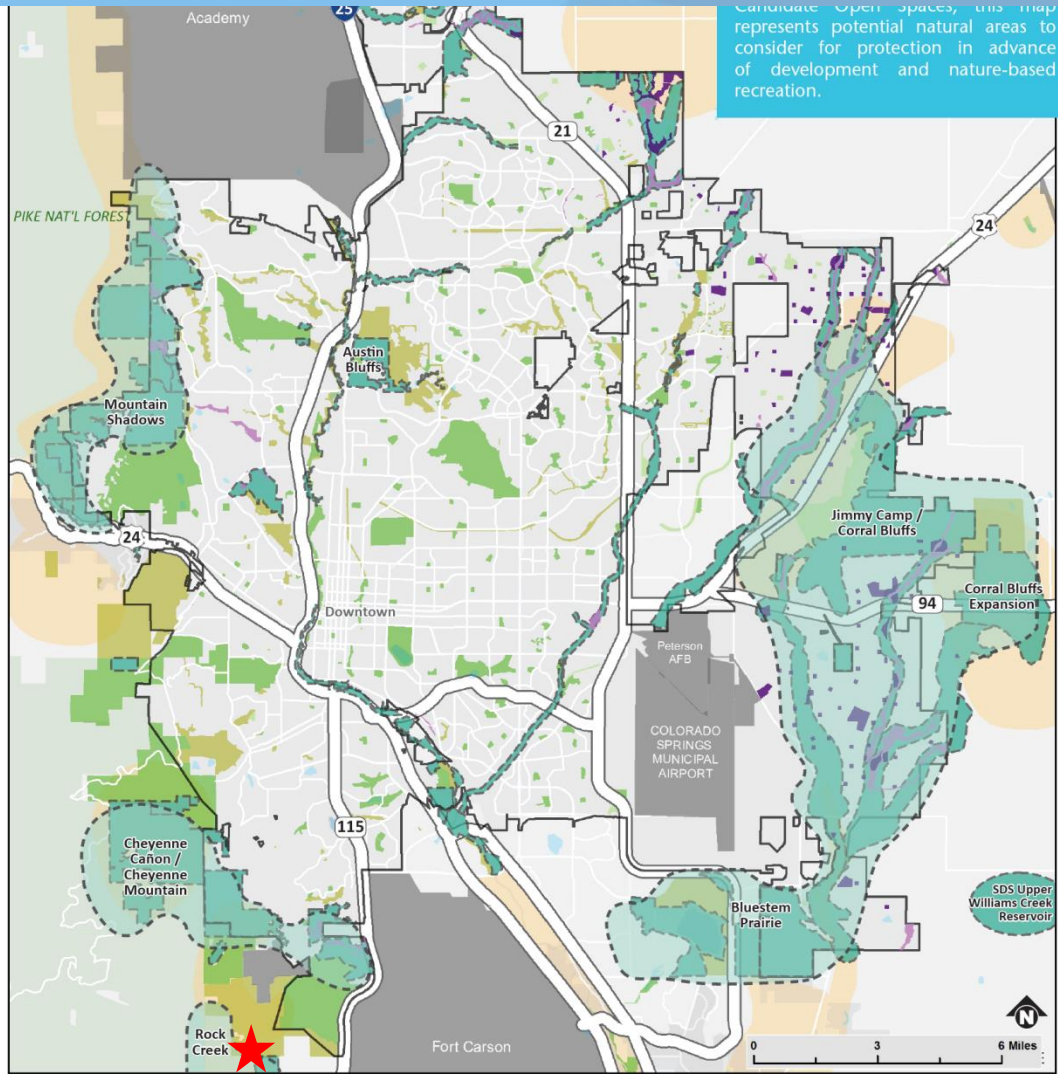
# Cheyenne Mountain State Park Expansion

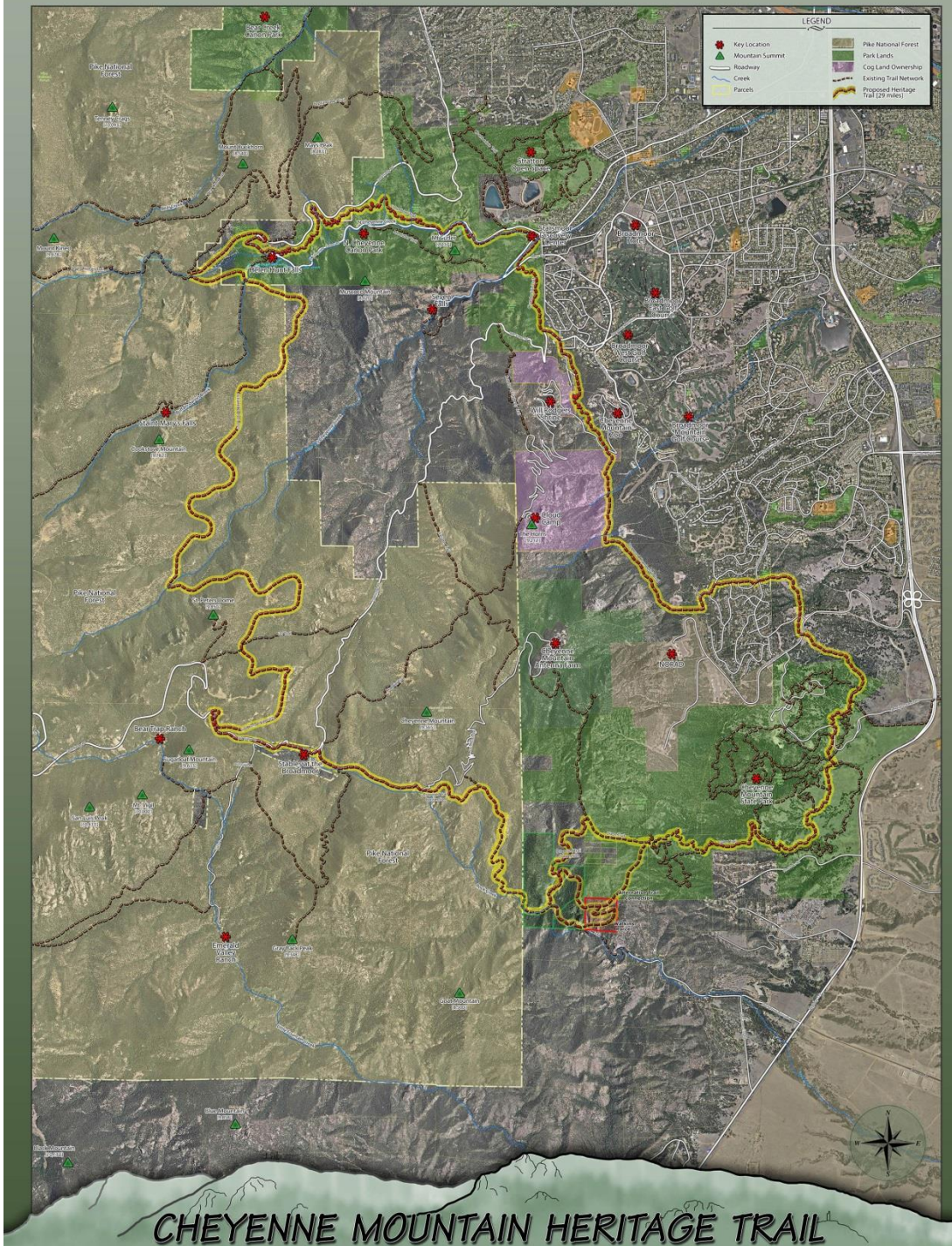


## 2014 Parks System Master Plan

- Identified for Potential Conservation
- Natural Resource Target Areas: Foothills, Mountain Backdrop, Riparian Habitat.
- Potential Trail Corridor identified in Rock Creek Canyon

Candidate Open Spaces, this map represents potential natural areas to consider for protection in advance of development and nature-based recreation.





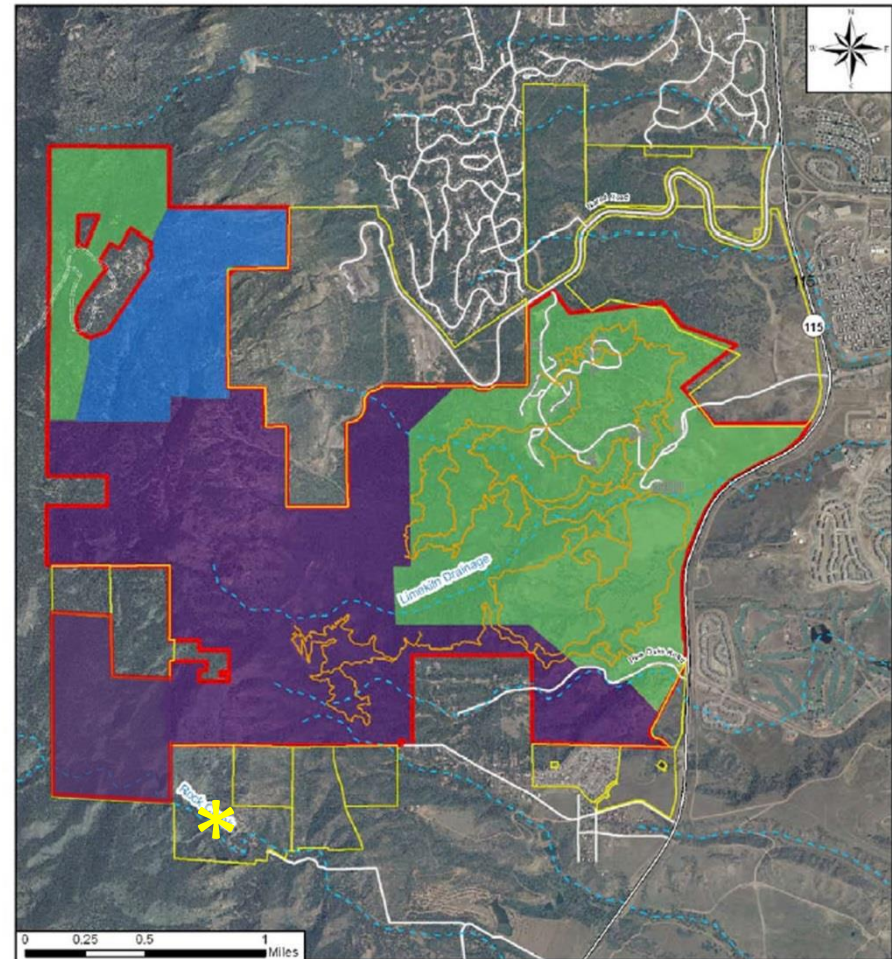
# CHEYENNE MOUNTAIN HERITAGE TRAIL

# Cheyenne Mountain State Park Expansion

Contiguous with Cheyenne Mountain State Park

- 1,875 acres TOPS acquisition
- Public access through park trail system (No public access from Rock Creek Canyon Road)
- Colorado Parks and Wildlife to manage and maintain the property in accordance with the TOPS Ordinance

Map 3. Land Ownership

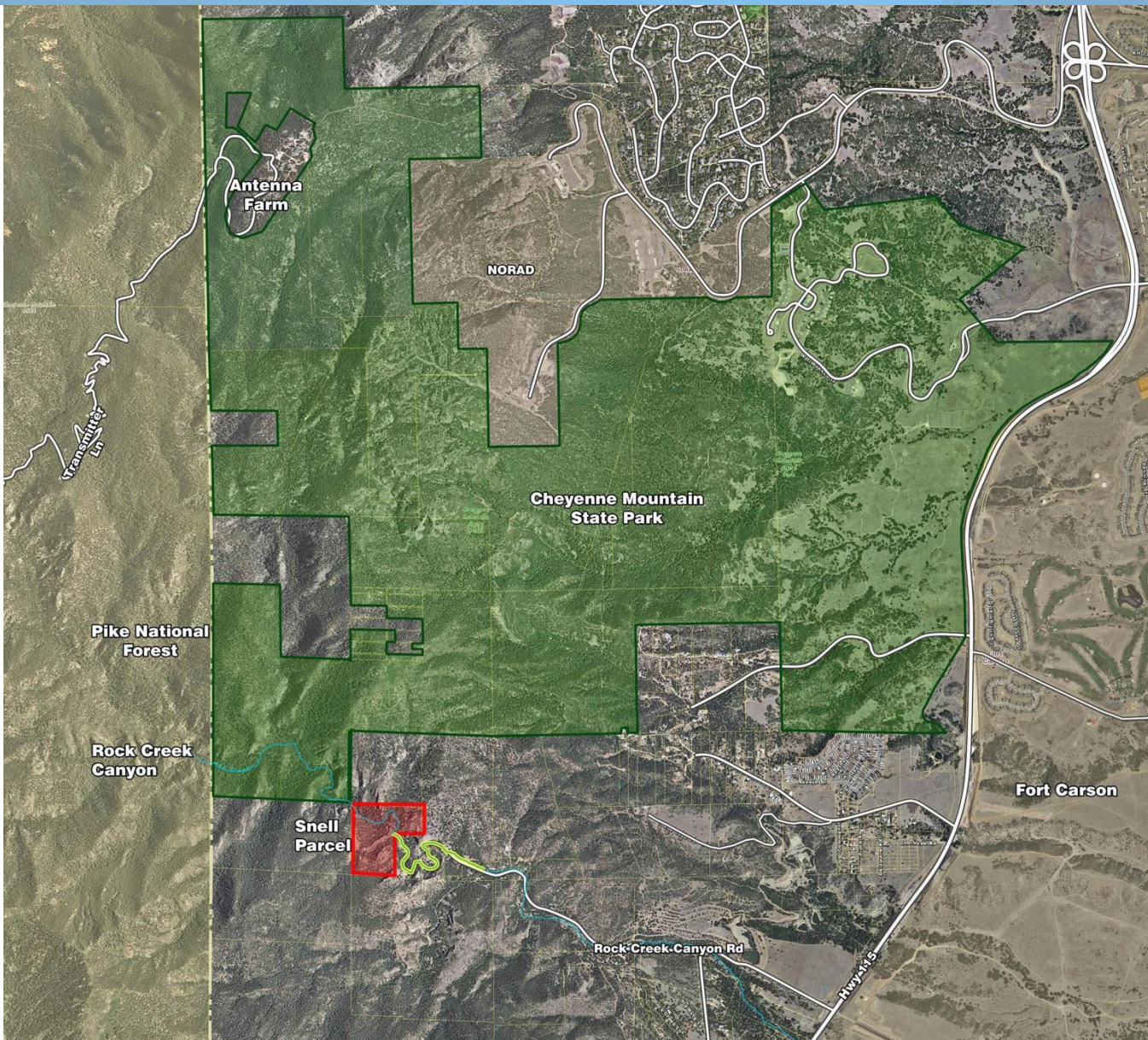


Cheyenne Mountain State Park Management Plan  
Draft Map: Land Ownership - Ext  
By: Sarah Lamagna

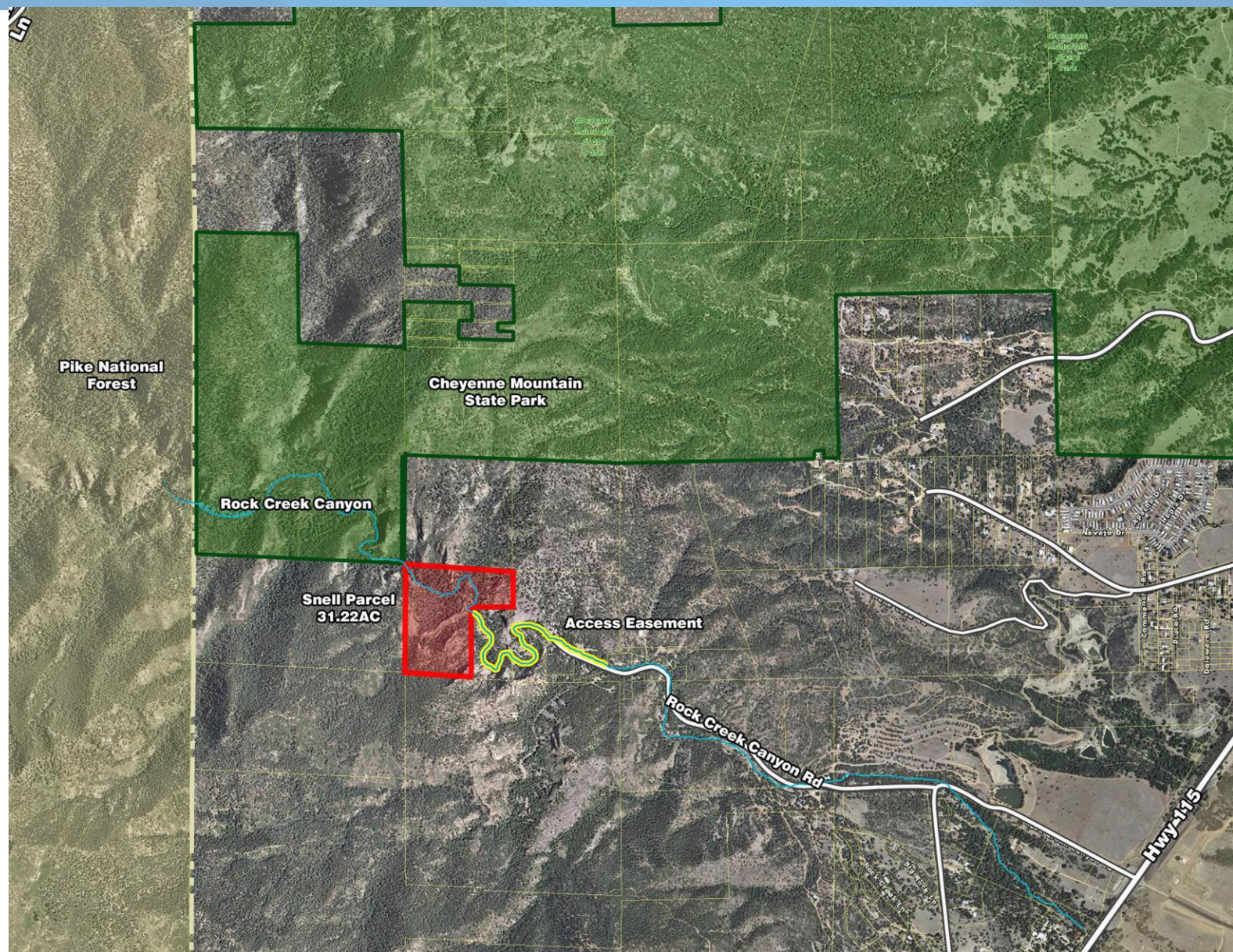
	<b>Land Owner</b>
	Private
	City of CO Springs
	State Land Board
	State Parks



# Cheyenne Mountain State Park Expansion



# Cheyenne Mountain State Park Expansion



# Site Photos



# Cheyenne Mountain State Park Expansion

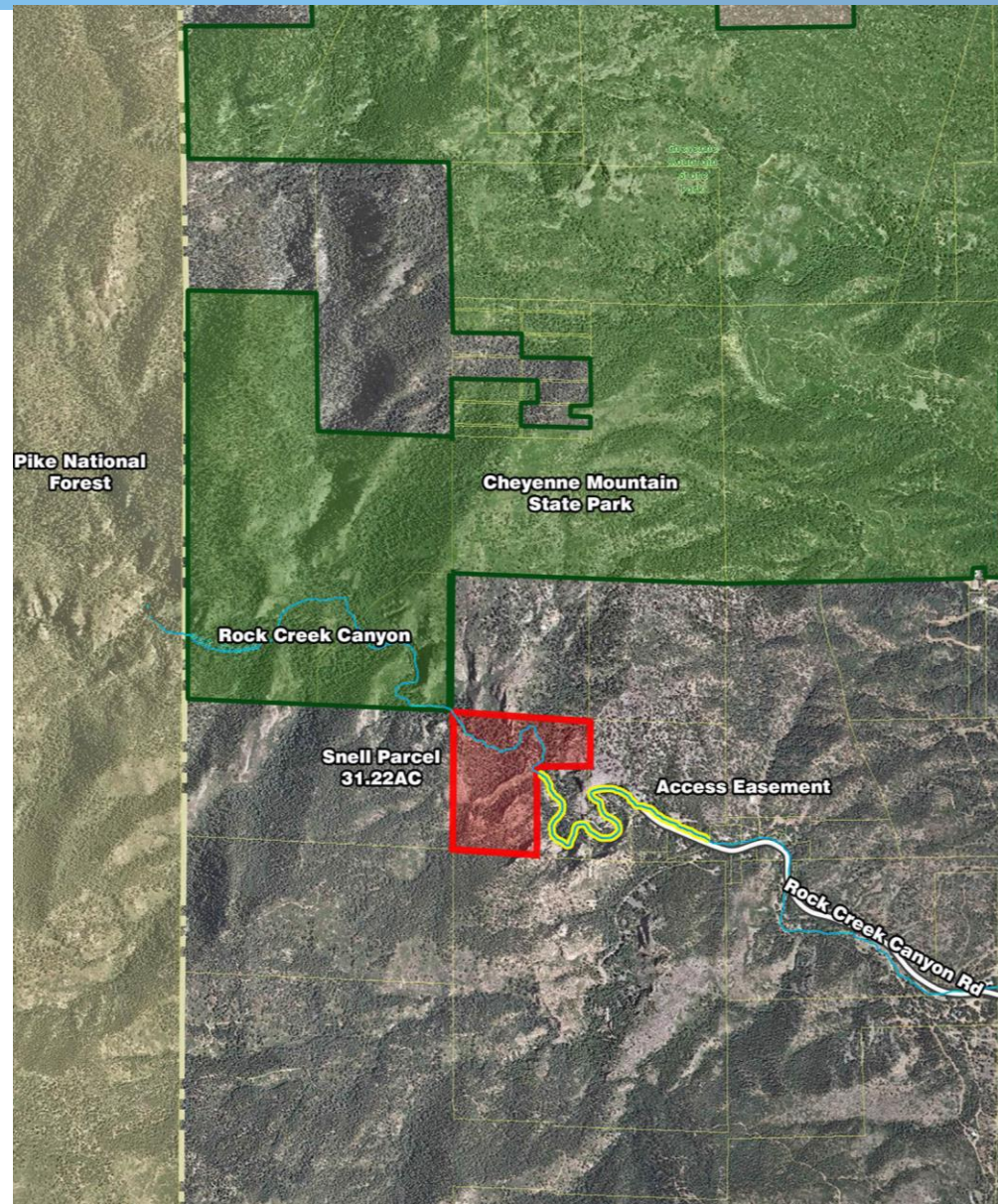
Recommended for Approval

TOPS Working Committee - April 4, 2018

Parks Advisory Board – April 12, 2018

## Financial Implications

- In accordance with the City's Real Estate Manual
  - Section 4.1 Acquisition
- Purchase Price \$135,500
- Plus \$3,500 closing costs
- Maintenance and Operation by Colorado Parks and Wildlife





# Cheyenne Mountain State Park Expansion

<b>TOPS Funding Category</b>	<b>Restrictions</b>	<b>2018 Approx. Annual Revenue</b>
TOPS - Admin	Max. 3% Administration – Limited to TOPS Projects	\$254,360
- Maintenance	Max. 6% Maintenance - Limited to TOPS Projects	\$508,800
- Open Space	Min. of 60% - Limited to Open Space Acquisition and Open Space Stewardship of TOPS acquired open space	\$4,630,080
- Trails	Max. of 20% - Limited to new trail construction	\$1,543,360
- Parks	Max. of 20% - Can be used for park acquisition, development, renovation, and maintenance	\$1,543,360
<b>TOTAL ANNUAL ESTIMATED REVENUE:</b>		<b>\$8,479,960</b>
		9

# Questions

