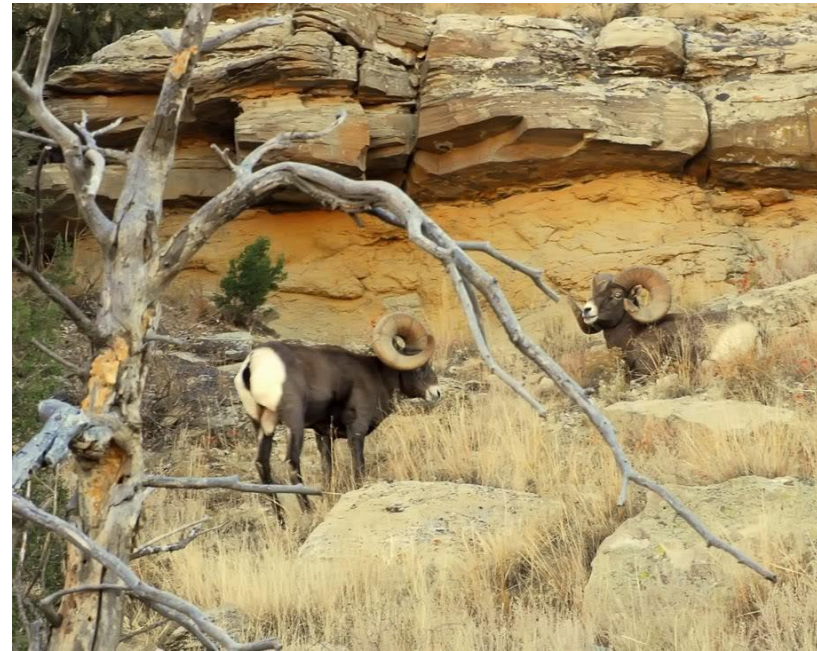


# Colorado Parks and Wildlife

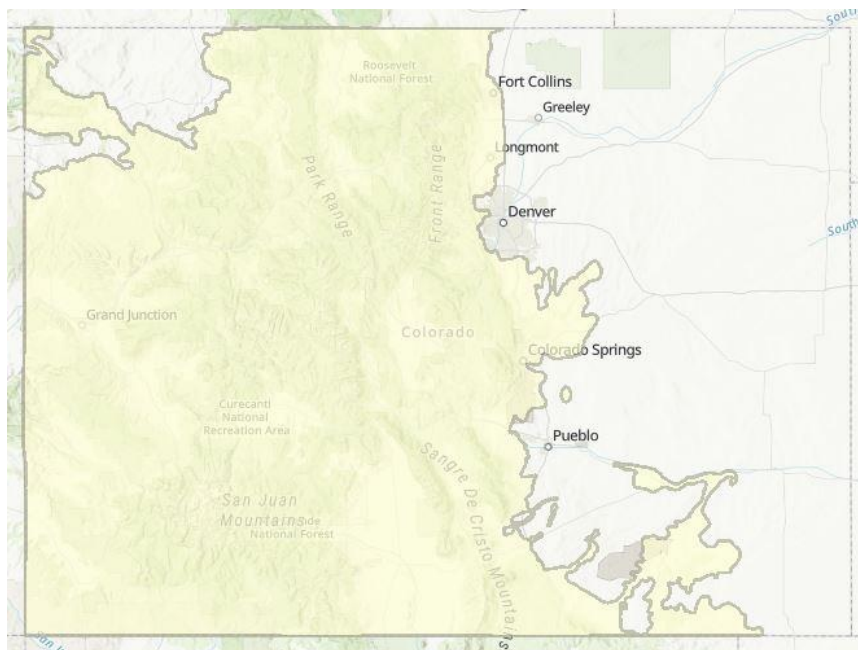
- State agency responsible for managing Colorado's 960 species of wildlife
- More than 350 State Wildlife Areas
- 41 State Parks



LIVE LIFE  
OUTSIDE

# Colorado Bear Population

- Colorado only has Black Bears
  - Statewide population estimate approximately 17,000-20,000 bears
- Distribution
  - West of I-25 with smaller populations in river bottoms east of I-25 and in SE Canyonlands



LIVE LIFE  
OUTSIDE

# Black Bear Biology

- Adult Males: ~275 pounds
- Adult Females: ~175 pounds
- Range from 125-450+ pounds depending on food source availability



LIVE LIFE  
OUTSIDE

# Black Bear Biology

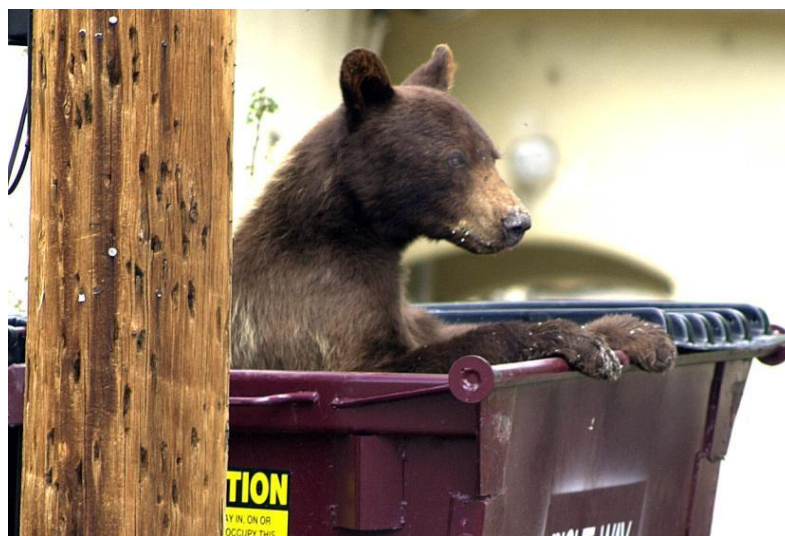
- Many different color phases
  - Black, Brown, Cinnamon, Honey, Blonde
  - No grizzly bears in Colorado
- Omnivores
  - 80%to 95%+ of their diet is vegetarian
  - Meat portion is often carrion
  - Trash
- “Hibernate” in the winter
  - Seasonal Lethargy
  - “Trigger” is often food availability rather than temperature/snowfall



LIVE LIFE  
OUTSIDE

# Bear Attractants

- Trash
- Bird seed
- BBQ Grills
- Pet Food
- Air Fresheners
- Pets/Livestock
- Hot Tub Covers
- Gardens
- Fruit Trees
- Bee Hives
- Ponds/Fish
- Compost Piles
- Natural Sources



LIVE LIFE  
OUTSIDE

# Causes, Consequences and Considerations for Management of Human-Black Bear Conflicts: Lessons Learned from Research in Durango

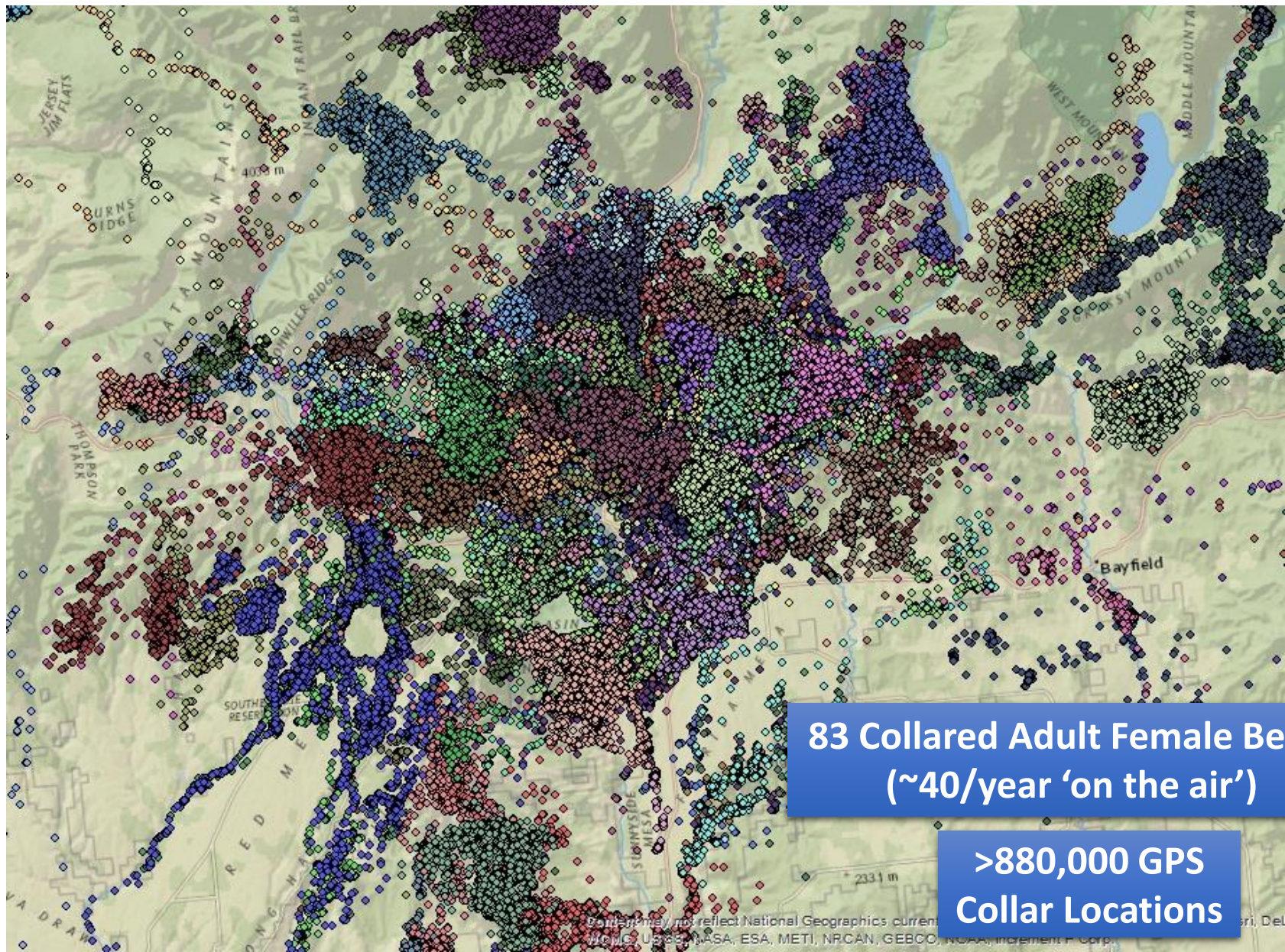


Heather Johnson

Stewart Breck, David Lewis, Jared Laufenberg,  
Stacy Lischka, Tana Verzuh, and Cody Wallace



LIVE LIFE  
OUTSIDE



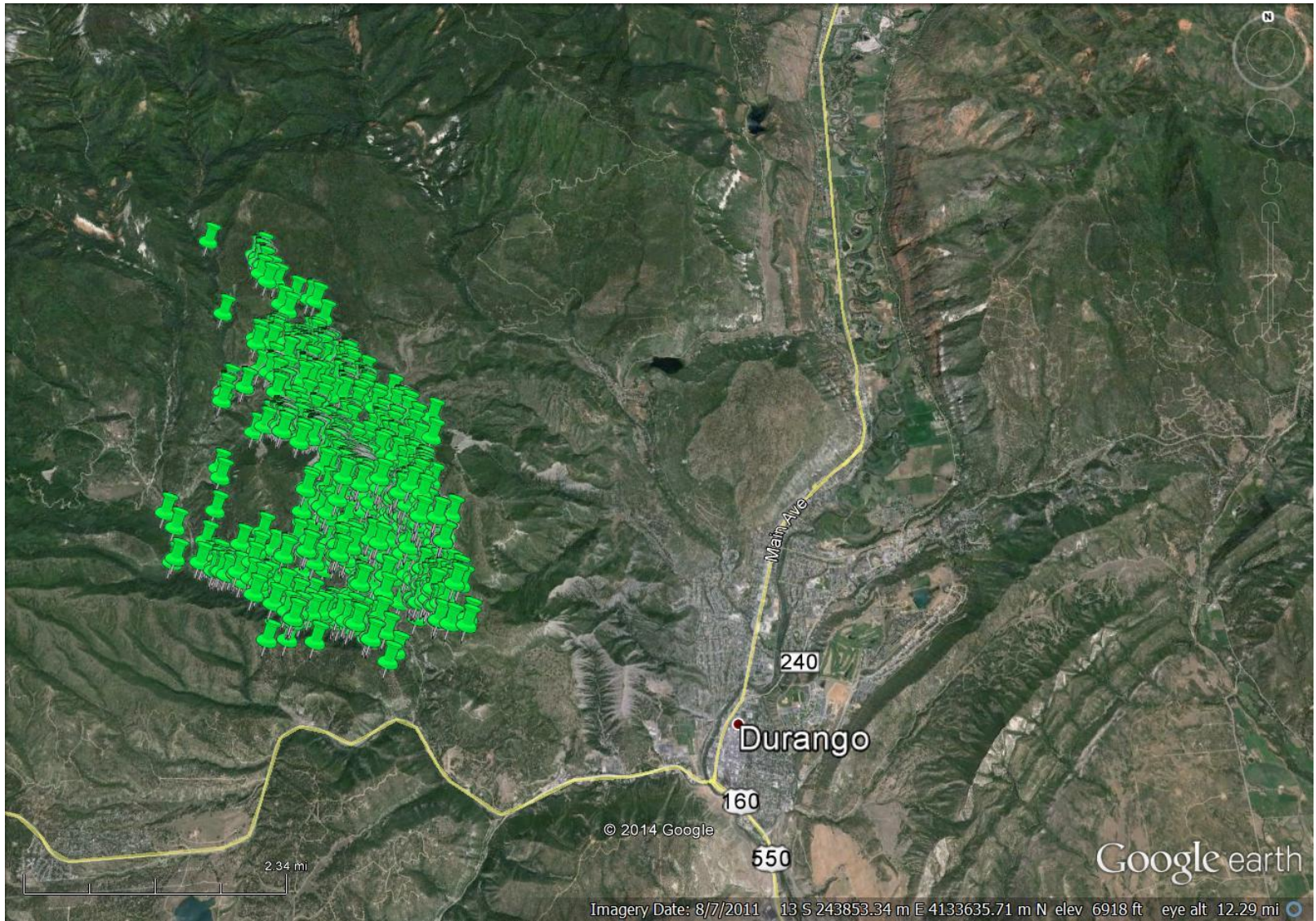
**83 Collared Adult Female Bears  
(~40/year 'on the air')**

**>880,000 GPS  
Collar Locations**



**LIVE LIFE  
OUTSIDE**

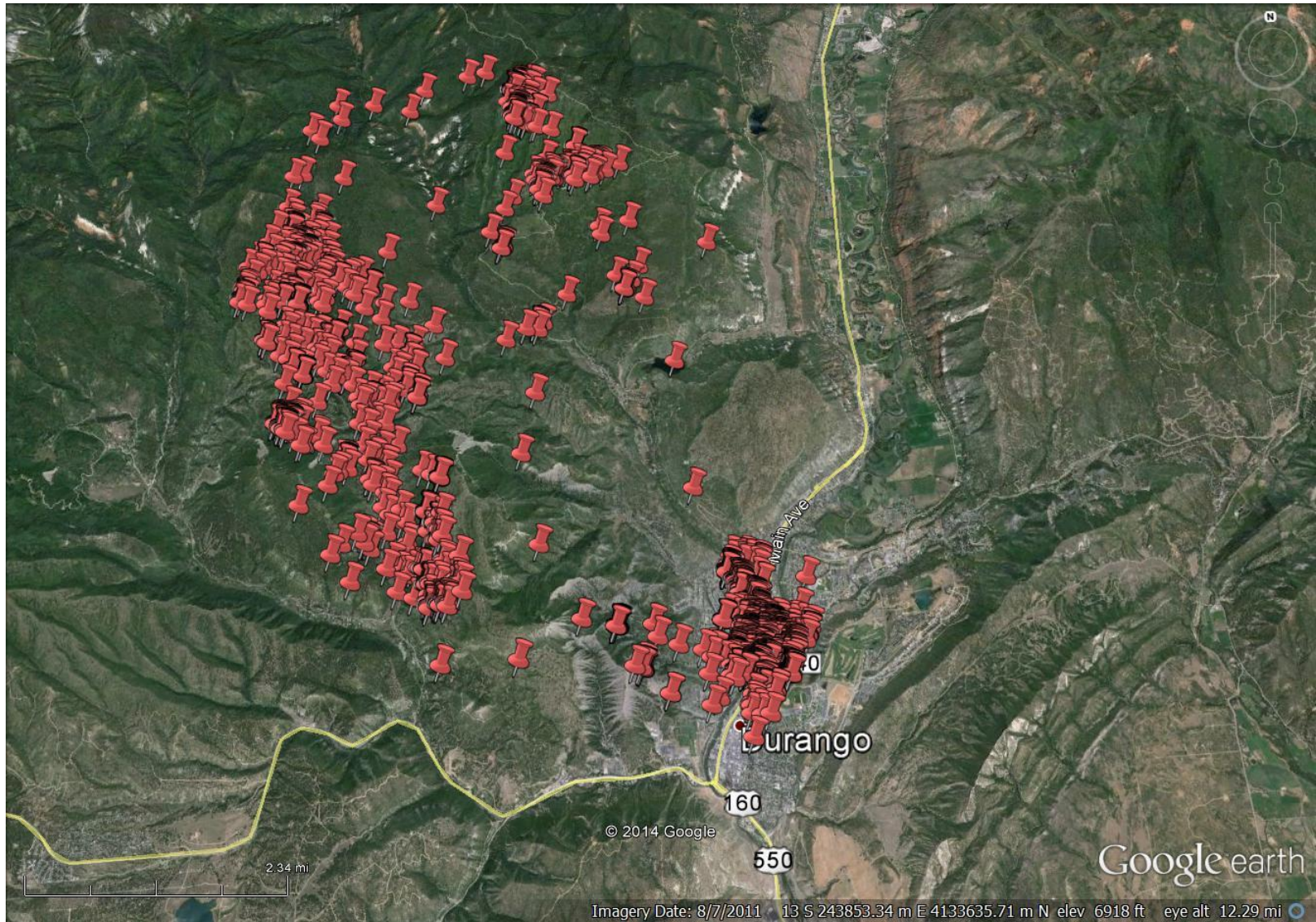
# B25: 2011 (good natural food year)



LIVE LIFE  
OUTSIDE

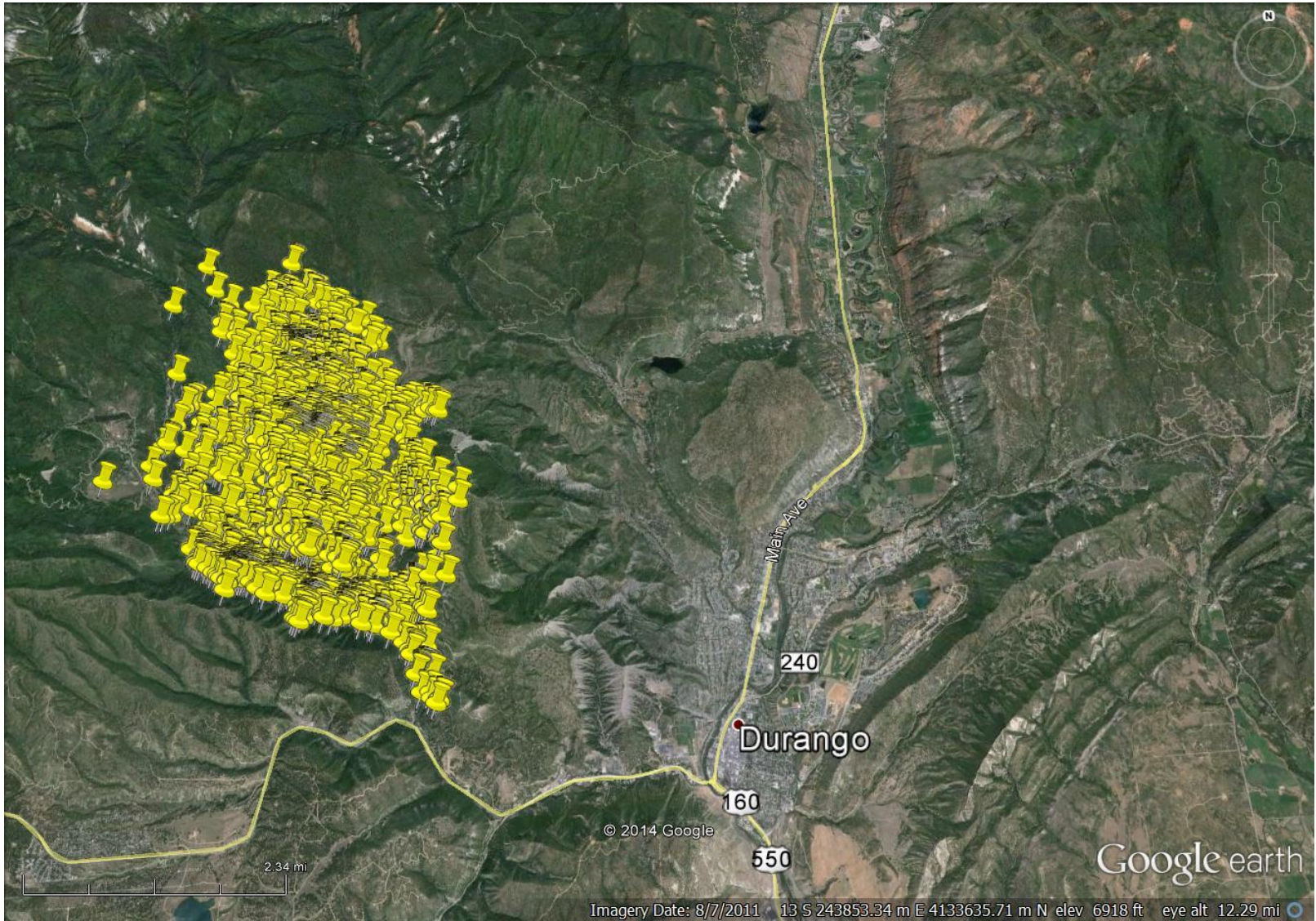


# B25: 2012 (poor natural food year)



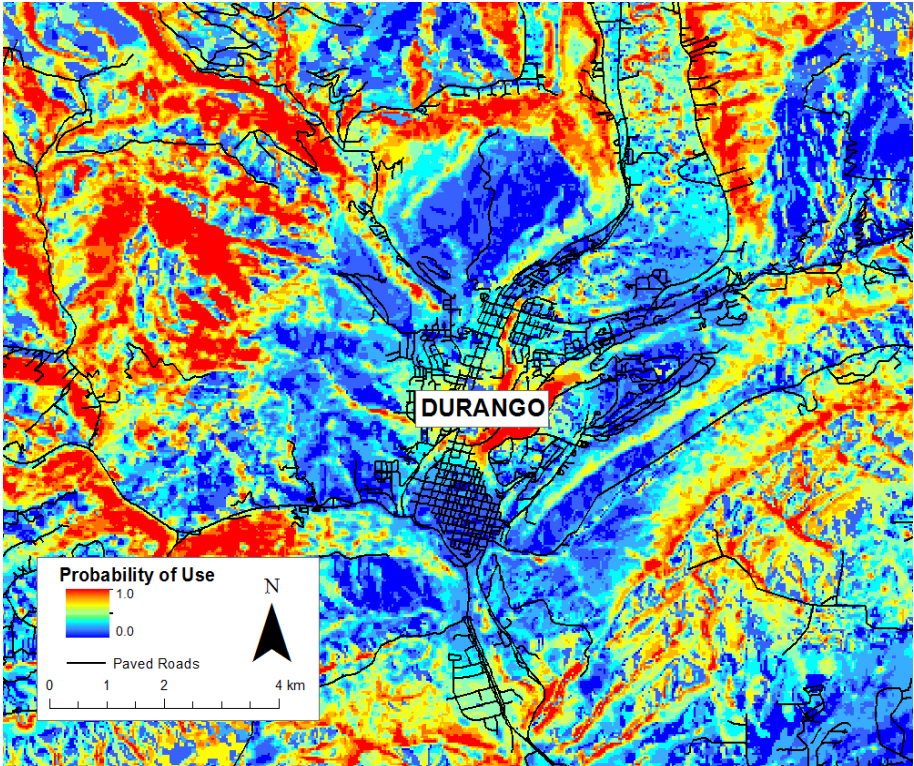
LIVE LIFE  
OUTSIDE

# B25: 2013 (moderate natural food year)

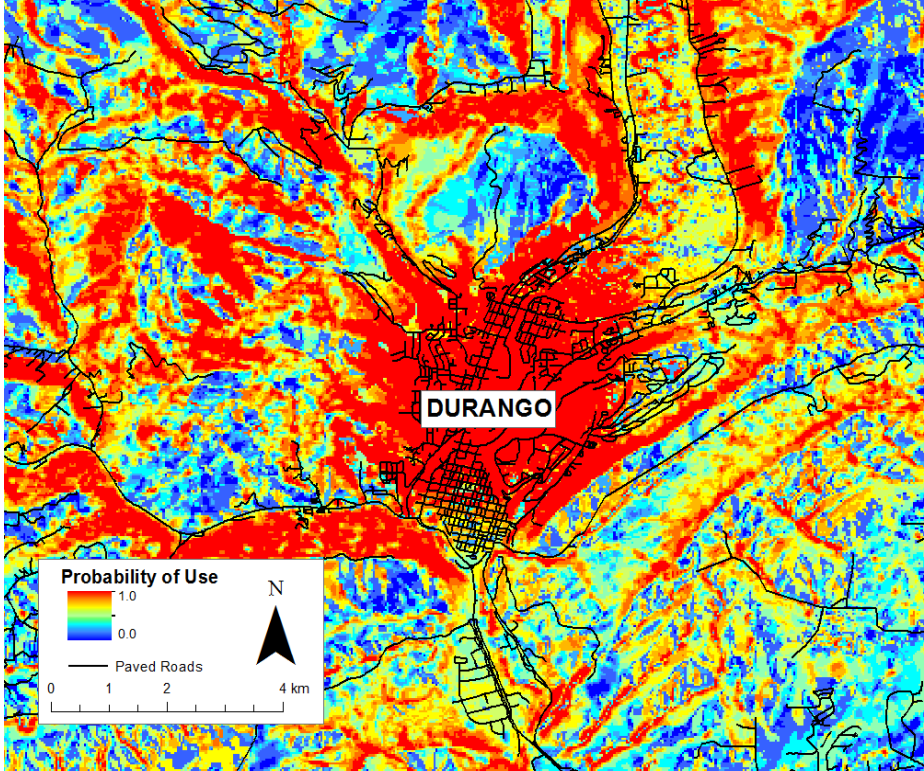


LIVE LIFE  
OUTSIDE

# Good natural foods



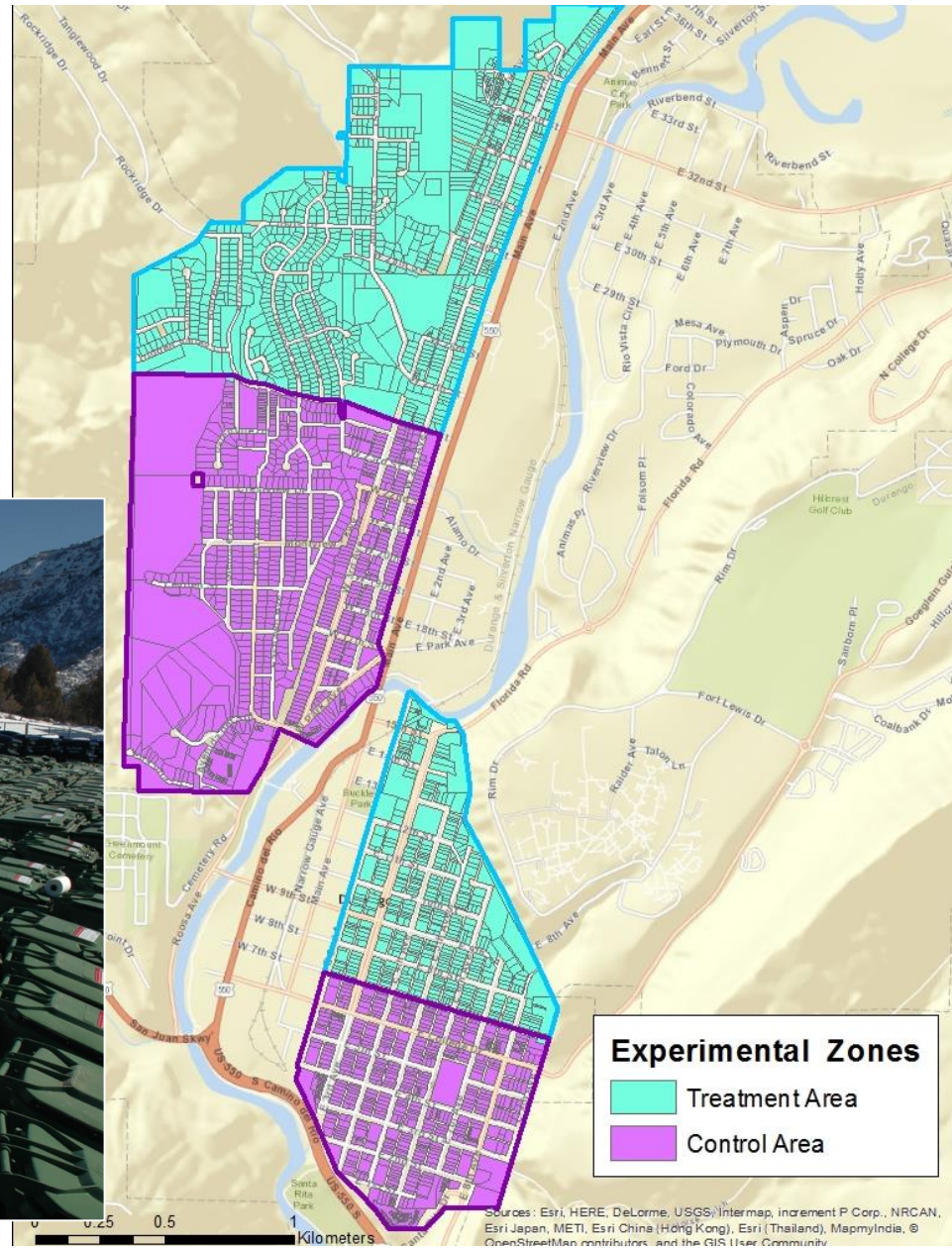
# Poor natural foods



LIVE LIFE  
OUTSIDE

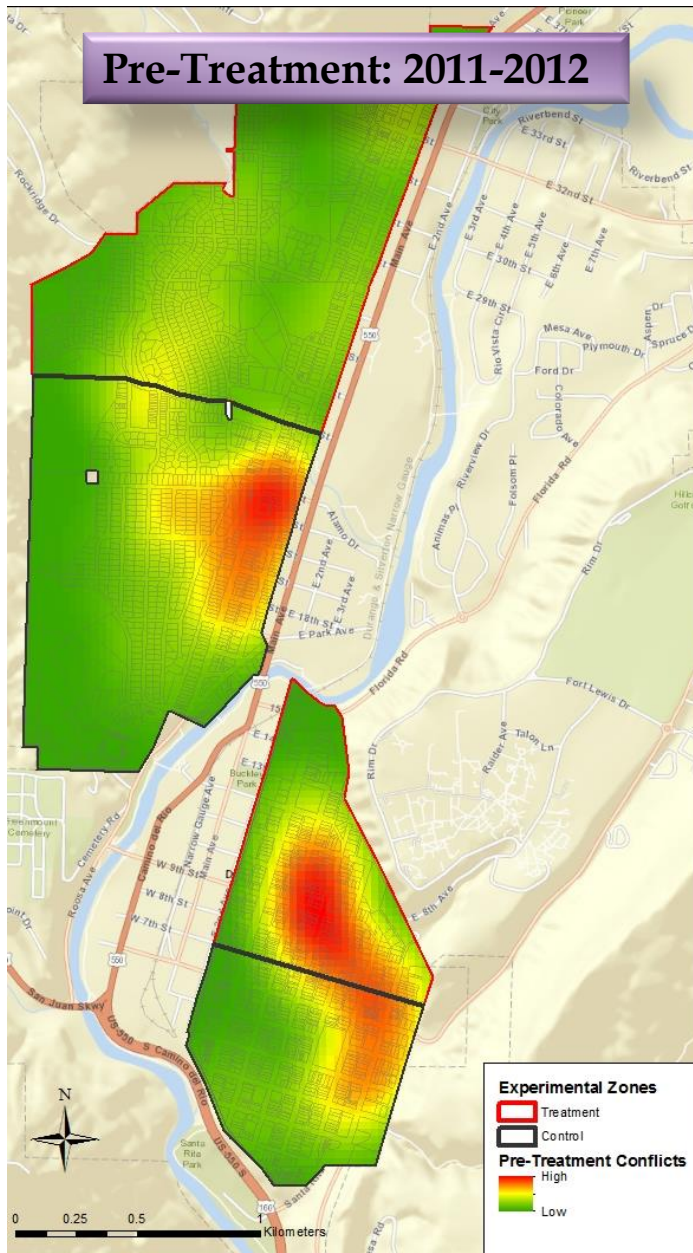


**CITY of DURANGO**

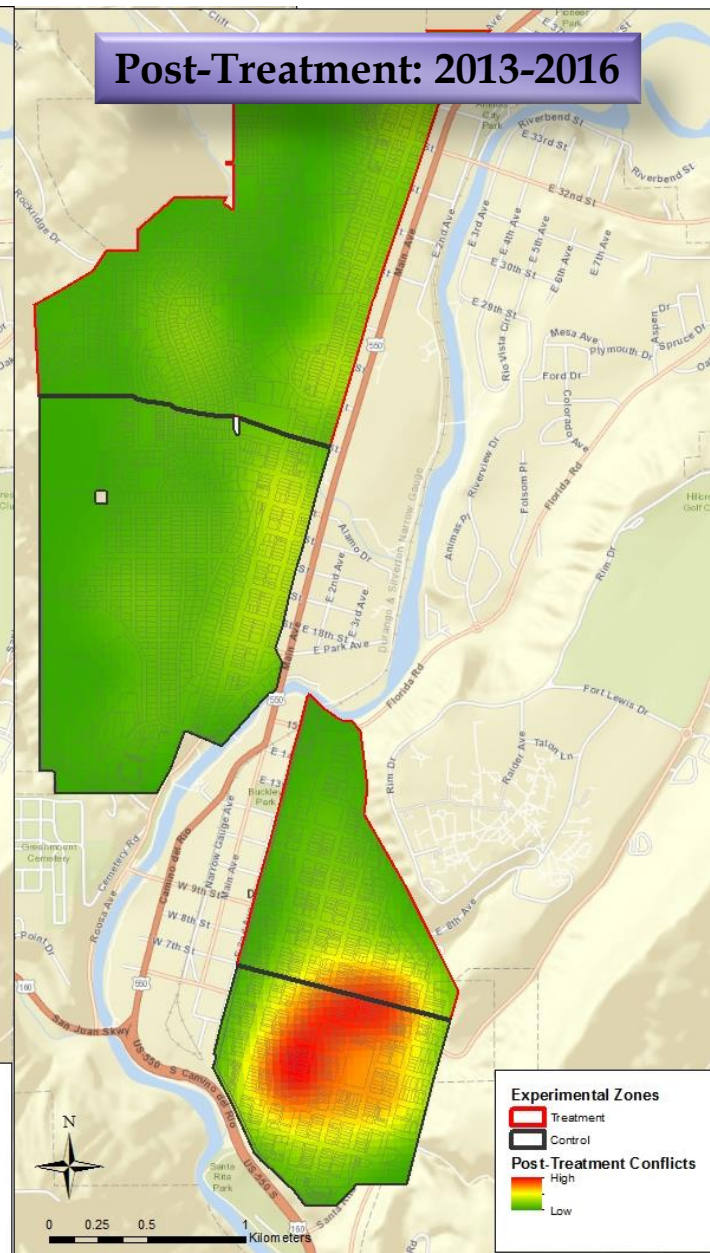


**LIVE LIFE OUTSIDE**

# Pre-Treatment: 2011-2012

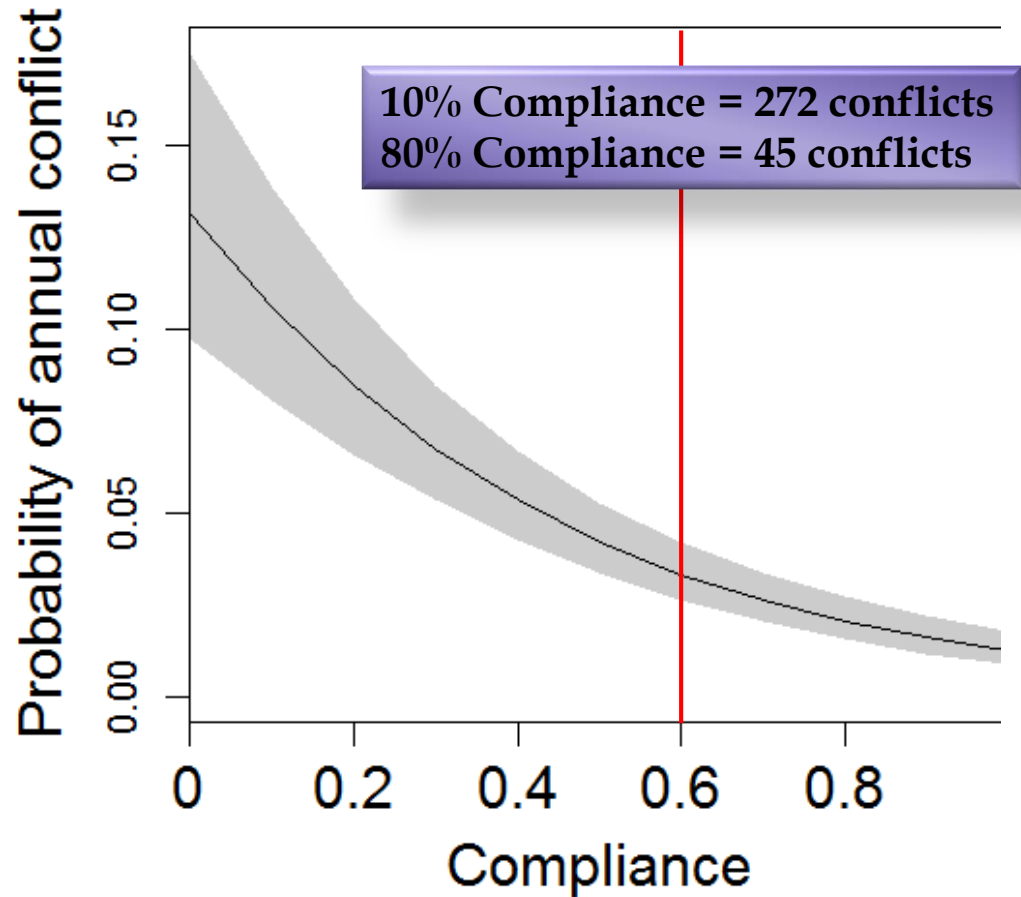
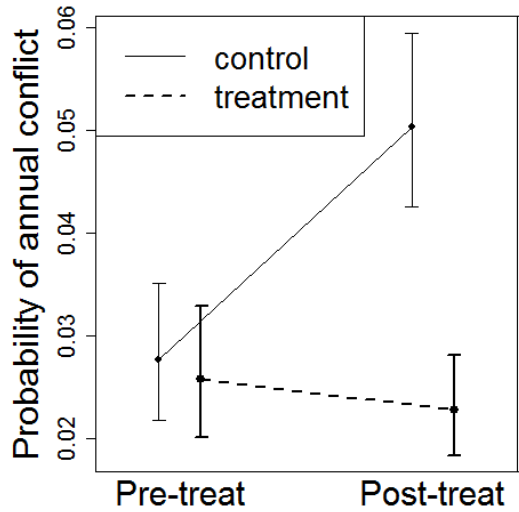


# Post-Treatment: 2013-2016



LIVE LIFE  
OUTSIDE

# Testing the effectiveness of the bear-resistant experiment for reducing human-bear conflicts



LIVE LIFE  
OUTSIDE

# Public Survey Questions

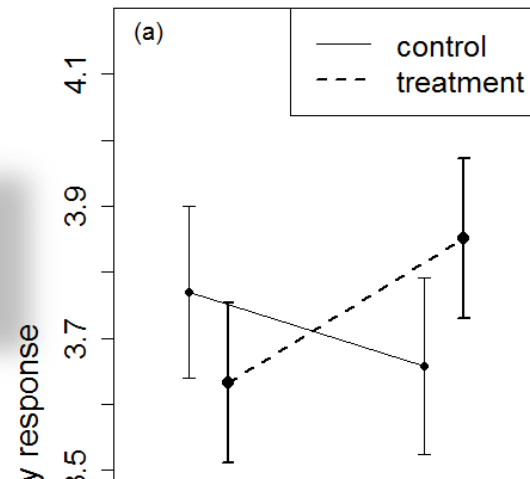
- 1) Rate your satisfaction in management of bears and human-bear conflicts
- 2) How effective are bear-resistant containers for reducing conflicts?
- 3) How acceptable is it for CPW to support city ordinances requiring bear-resistant containers?
- 4) How likely is it that you will experience a bear conflict in the future?



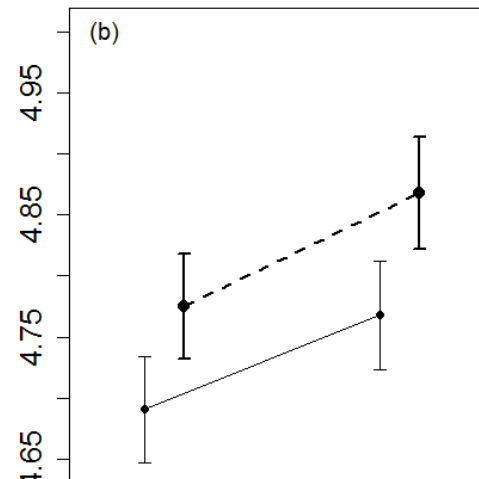
LIVE LIFE  
OUTSIDE

# Public Survey Results

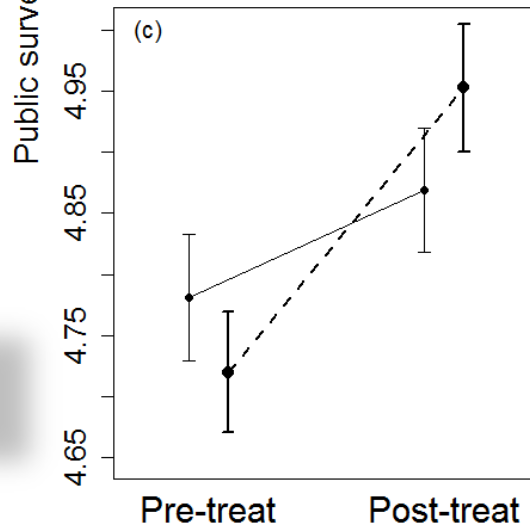
Satisfaction with Management



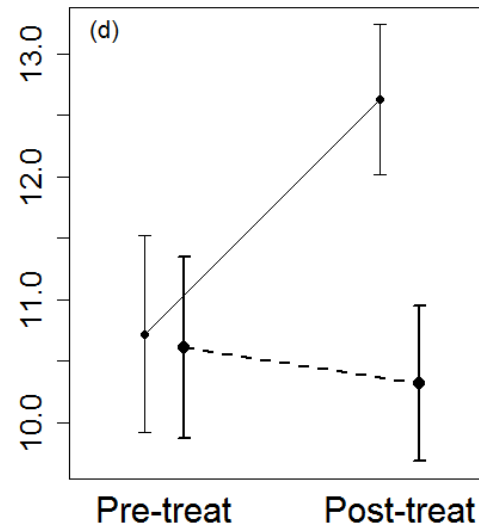
Effectiveness of Containers



Support for Ordinances



Risk of Future Conflict



LIVE LIFE  
OUTSIDE



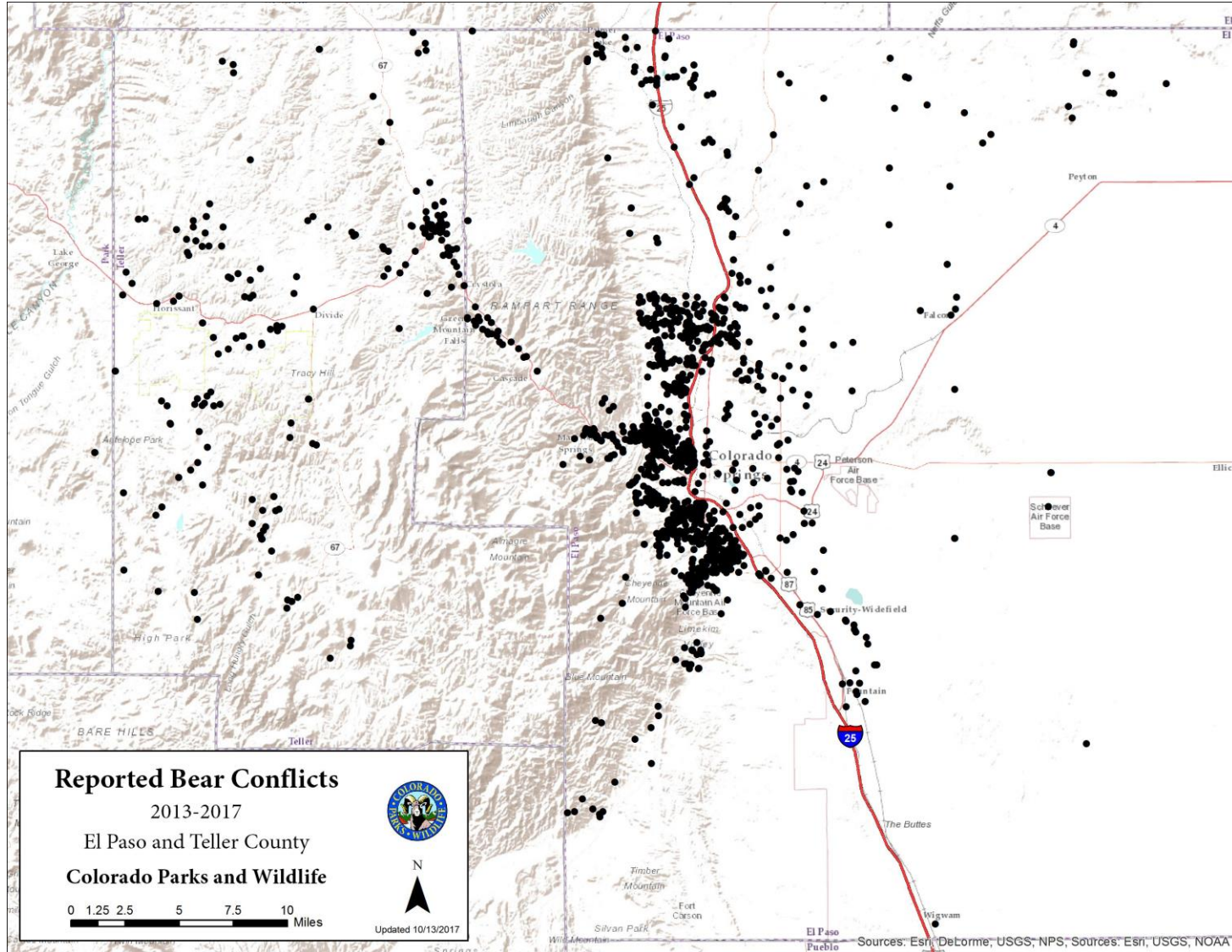
# Take Home Messages

- Distribution of bear-resistant containers resulted in 50% fewer conflicts than control areas.
- Important to promote compliance with ordinances to reduce access to human foods (by whatever means); ~60% compliance rate significantly reduced conflicts, and may serve as a useful management target
- Distribution of cans not only reduced conflicts, but positively changed public perceptions (management, ordinances, future risk)



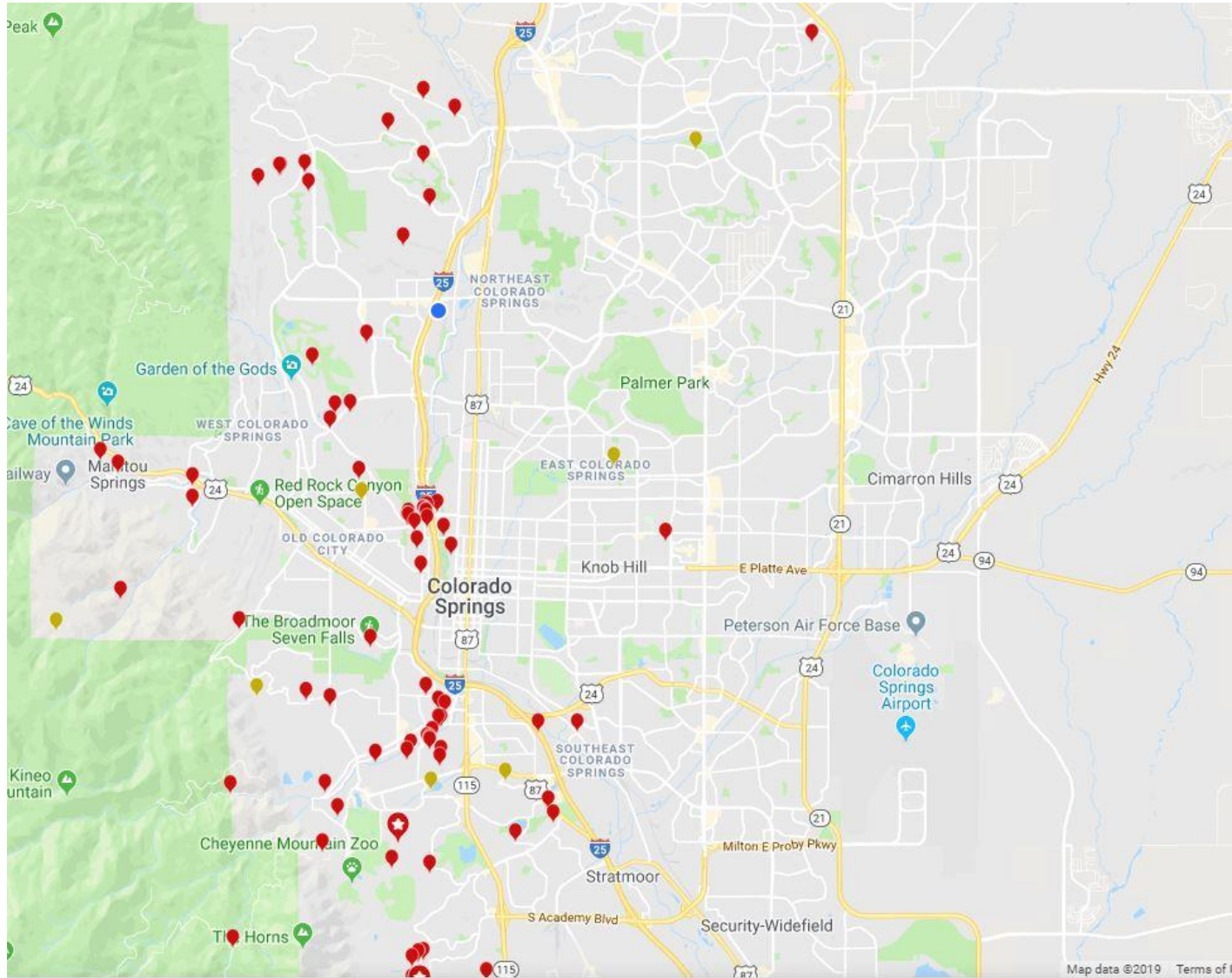
LIVE LIFE  
OUTSIDE

# Local Human-Bear Conflicts



LIVE LIFE  
OUTSIDE

# Local Conflict 4/1/19 - 7/8/19



LIVE LIFE  
OUTSIDE

# Number of calls by County

(April 1, 2019- July 8, 2019)

1. Pitkin	224
2. Routt	183
3. El Paso	152
4. Boulder	142
5. Larimer	128
6. La Plata	105
7. Garfield	97



LIVE LIFE  
OUTSIDE