

Acquisition of Approximately 40 acres for the Expansion of Cheyenne Mountain State Park

City Council
April 23, 2018



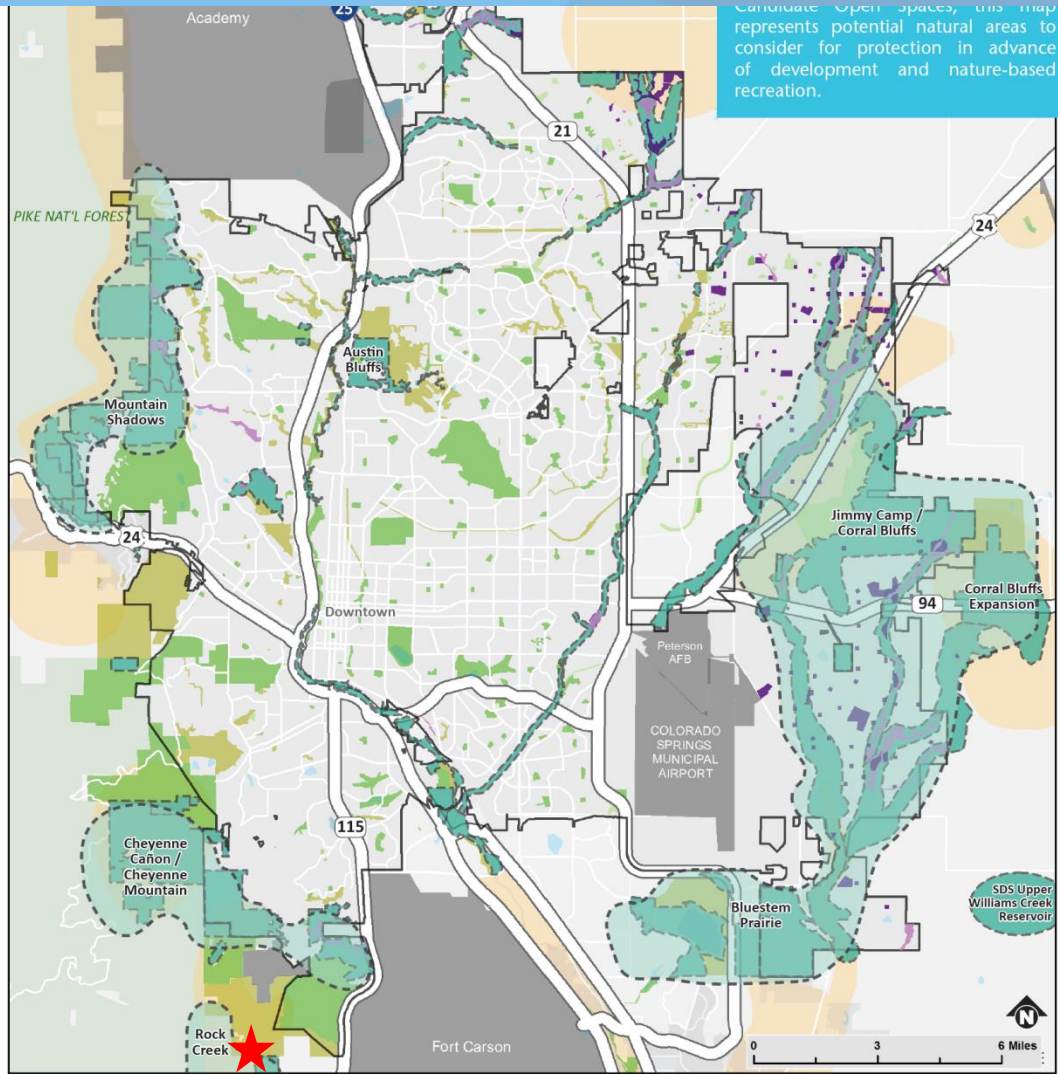
Cheyenne Mountain State Park Expansion

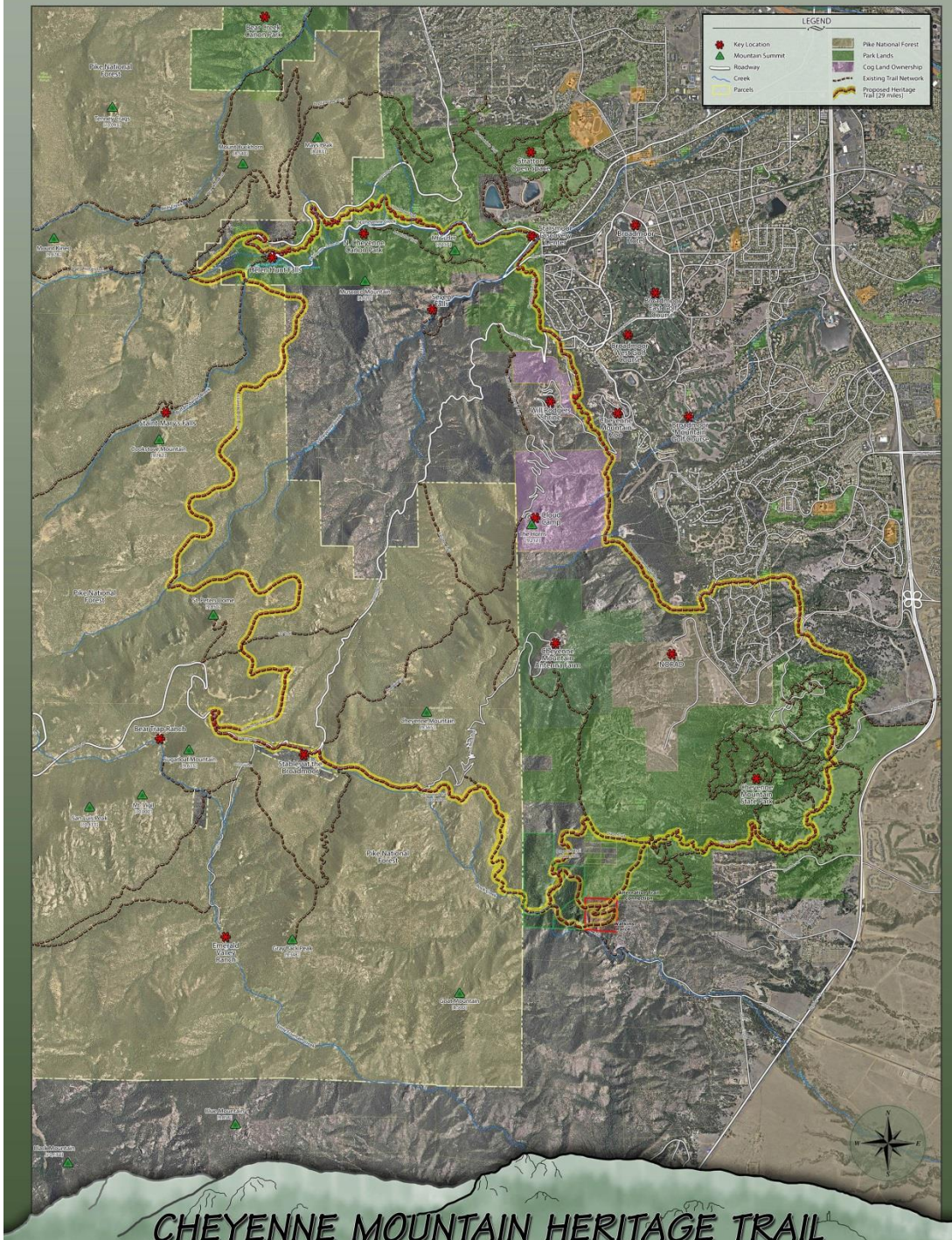


2014 Parks System Master Plan

- Identified for Potential Conservation
- Natural Resource Target Areas: Foothills, Mountain Backdrop, Riparian Habitat.
- Potential Trail Corridor identified in Rock Creek Canyon

Candidate Open Spaces, this map represents potential natural areas to consider for protection in advance of development and nature-based recreation.





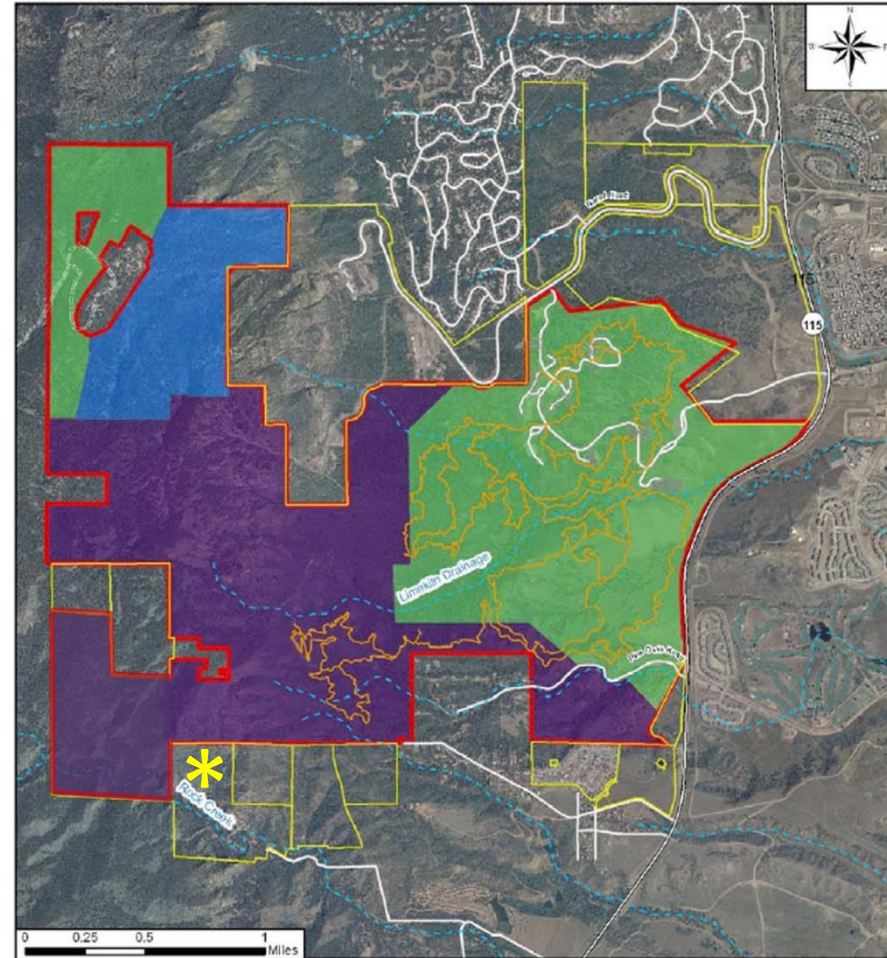
CHEYENNE MOUNTAIN HERITAGE TRAIL

Cheyenne Mountain State Park Expansion

Contiguous with Cheyenne Mountain State Park

- 1,875 acres TOPS acquisition
- Public access through park trail system (No public access from Rock Creek Canyon Road)
- Colorado Parks and Wildlife to manage and maintain the property in accordance with the TOPS Ordinance

Map 3. Land Ownership

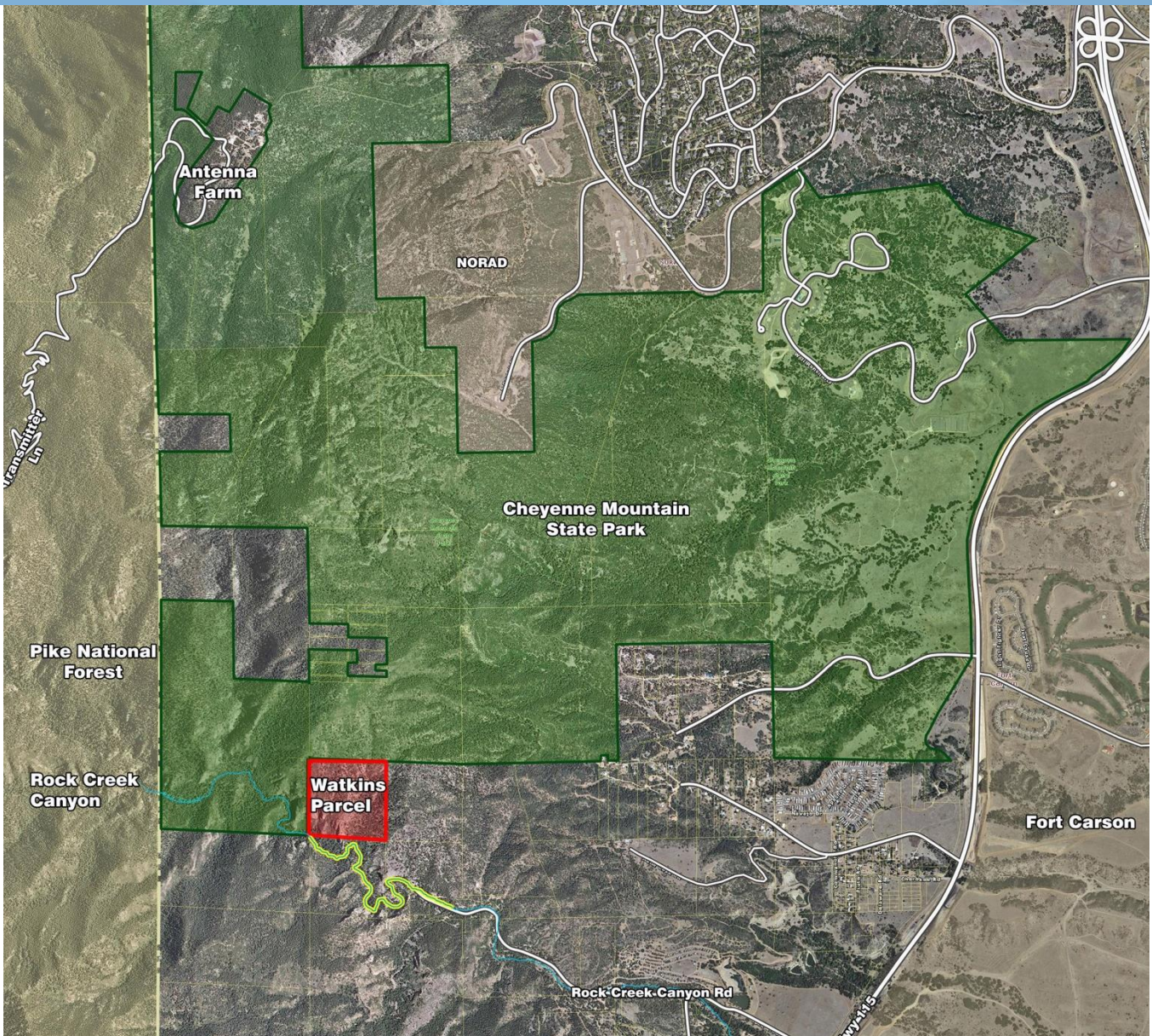


Cheyenne Mountain State Park
Management Plan
Draft Map: Land Ownership - Ext
By: Sarah Lamagna

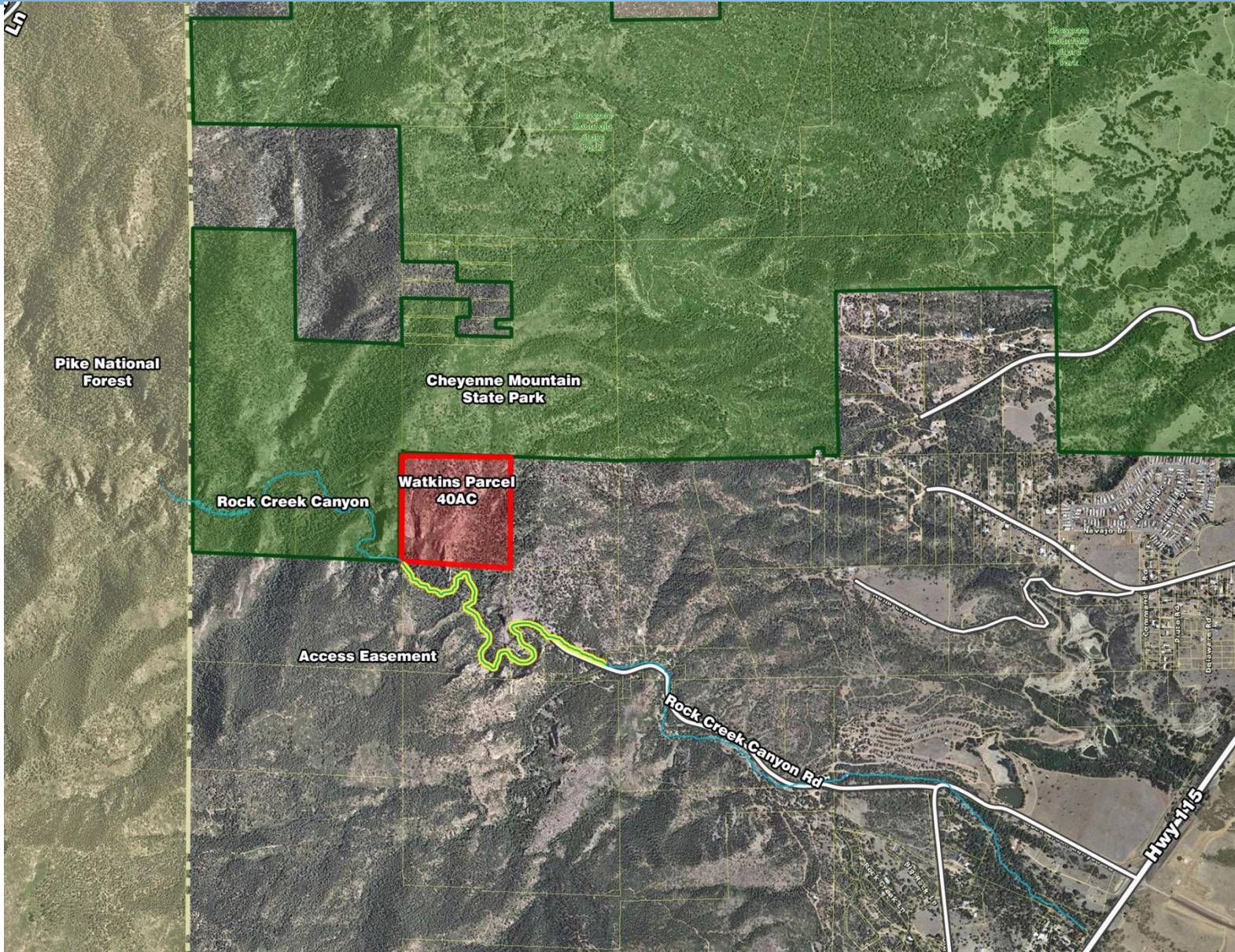
Land Owner	
	Park Boundary
	Highways
	Local Roads
	Designated Trail
	Private
	City of CO Springs
	State Land Board
	State Parks



Cheyenne Mountain State Park Expansion



Cheyenne Mountain State Park Expansion



Site Photos



Cheyenne Mountain State Park Expansion

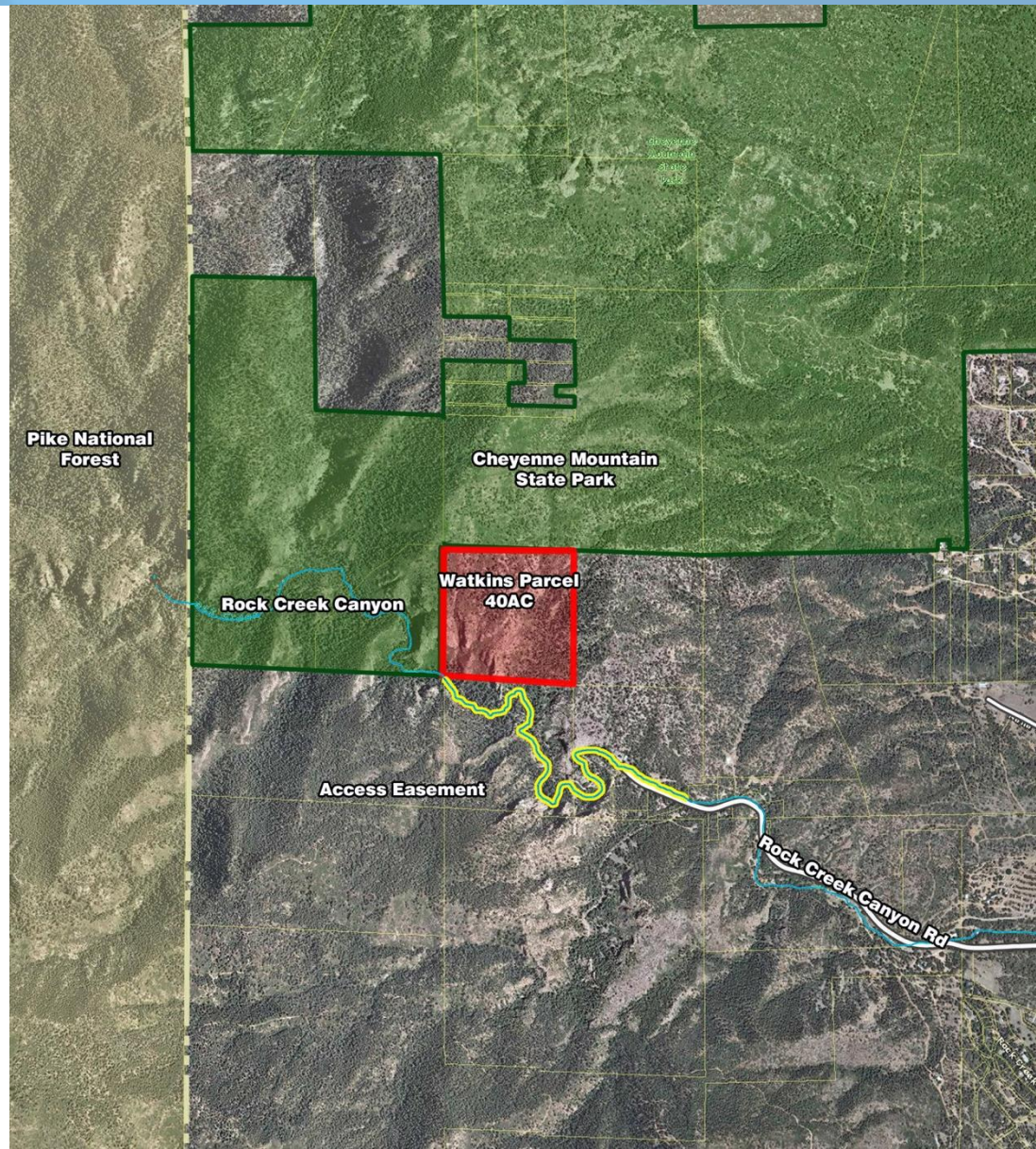
Recommended for Approval

TOPS Working Committee Mar 7, 2018

Parks Advisory Board – Mar 8, 2018

Financial Implications

- In accordance with the City's Real Estate Manual
 - Section 4.1 Acquisition
- Purchase Price \$156,000
- Maintenance and Operation by Colorado Parks and Wildlife



Cheyenne Mountain State Park Expansion

TOPS Funding Category	Restrictions	2018 Approx. Annual Revenue
TOPS - Admin	Max. 3% Administration – Limited to TOPS Projects	\$254,360
- Maintenance	Max. 6% Maintenance - Limited to TOPS Projects	\$508,800
- Open Space	Min. of 60% - Limited to Open Space Acquisition and Open Space Stewardship of TOPS acquired open space	\$4,630,080
- Trails	Max. of 20% - Limited to new trail construction	\$1,543,360
- Parks	Max. of 20% - Can be used for park acquisition, development, renovation, and maintenance	\$1,543,360
TOTAL ANNUAL ESTIMATED REVENUE:		\$8,479,960
		9

Questions

