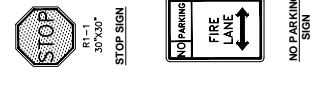
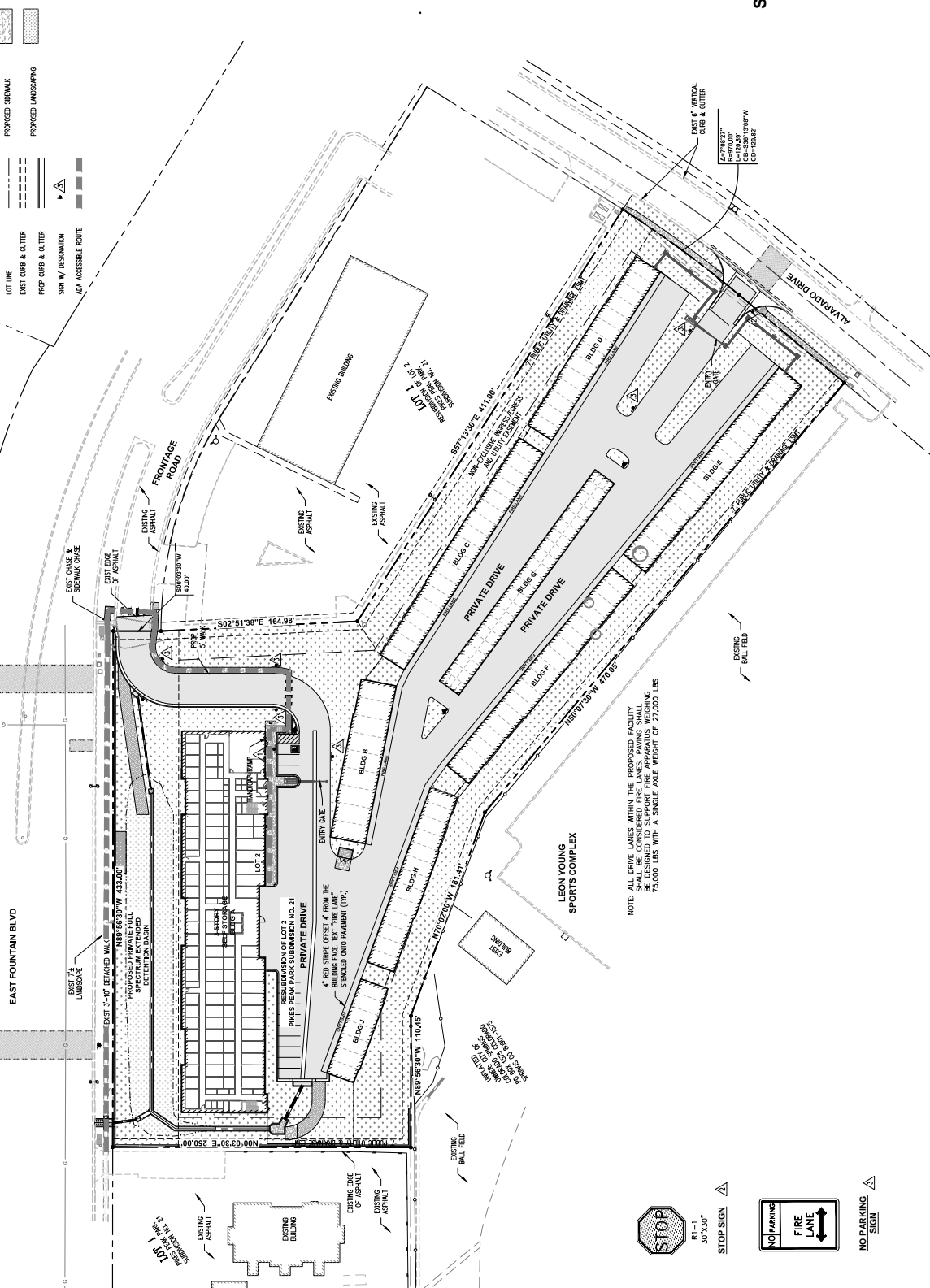


LEGEND

	BOUNDARY		PROPOSED ASPHALT
	RIGHT-OF-WAY		PROPOSED SIDEWALK
	LOT LINE		PROPOSED LANDSCAPING
	EXIST. CURB & GUTTER		
	PROP. CURB & GUTTER		
	SIGN W/ DESIGNATION		
	ADA ACCESSIBLE ROUTE		

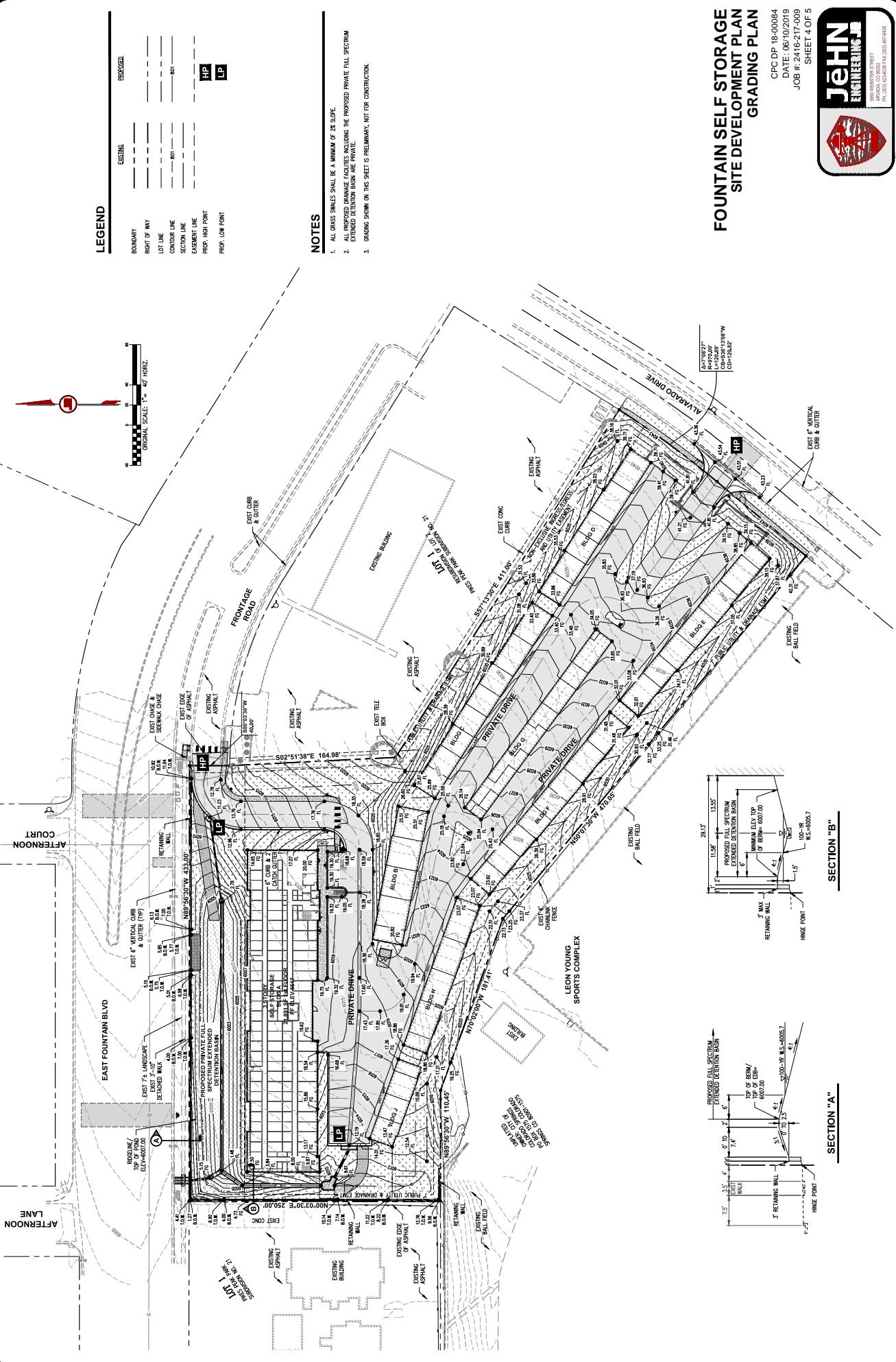


**FOUNTAIN SELF STORAGE
SITE DEVELOPMENT PLAN
SIGNAGE & ADA SITE ACCESSIBILITY**

CPC DP 18-00084
DATE: 06/25/2019
JOB #: 2416-217-009
SHEET 3 OF 5



FIGURE 2



**FOUNTAIN SELF STORAGE
SITE DEVELOPMENT PLAN
GRADING PLAN**

CPC DP: 18-00084
DATE: 06/10/2019
JOB #: 2416-217-009
SHEET 4 OF 5



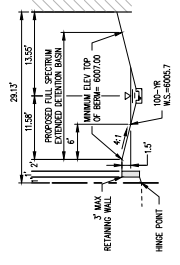
LEGEND

BOUNDARY	EXISTING	PROPOSED
RIGHT OF WAY	---	---
LOT LINE	---	---
CONTOUR LINE	---	---
SECTION LINE	---	---
EASEMENT LINE	---	---
PROP. HIGH POINT	HP	LP
PROP. LOW POINT	HP	LP

NOTES

1. ALL GRASS SWALES SHALL BE A MINIMUM OF 2% SLOPE.
2. ALL PROPOSED DRAINAGE FACILITIES INCLUDING THE PROPOSED PRIVATE FULL SPECTRUM EXTENDED DETENTION BASIN ARE PRIVATE.
3. GRADING SHOWN ON THIS SHEET IS PRELIMINARY, NOT FOR CONSTRUCTION.

SECTION "B"



SECTION "A"

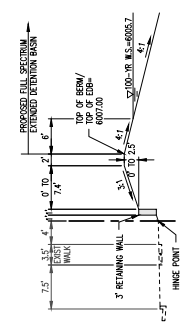


FIGURE 2



LEGEND

	PROPOSED ASPHALT
	EXIST ASPHALT TO BE REMOVED AND REPLACED
	LOT LINE
	EAST EASEMENT LINE
	PROP. EASEMENT LINE
	PROP. CURB & GUTTER
	PROP. CURB & GUTTER
	PROP. GAS LINE
	PROP. SAN SEWER
	PROP. FIRE HYDRANT
	PROP. STORM INLET
	PROP. STORM LINE
	PROP. STORM LINE
	PROP. ELECTRIC VAULT
	PROP. ELECTRIC VAULT
	PROP. WATER SERVICE WITH METER
	PROP. WATER SERVICE
	PROP. WATER SERVICE

WATER LINE NOTES:

1. ALL WATER LINE SERVICES ARE 3/4" TYPE COPPER "C".
2. FIRE LINE SHALL BE 6" C-900 DP.

SANITARY SEWER NOTES:

1. ALL SANITARY SERVICES ARE 4" PVC.

STORM SEWER NOTES:

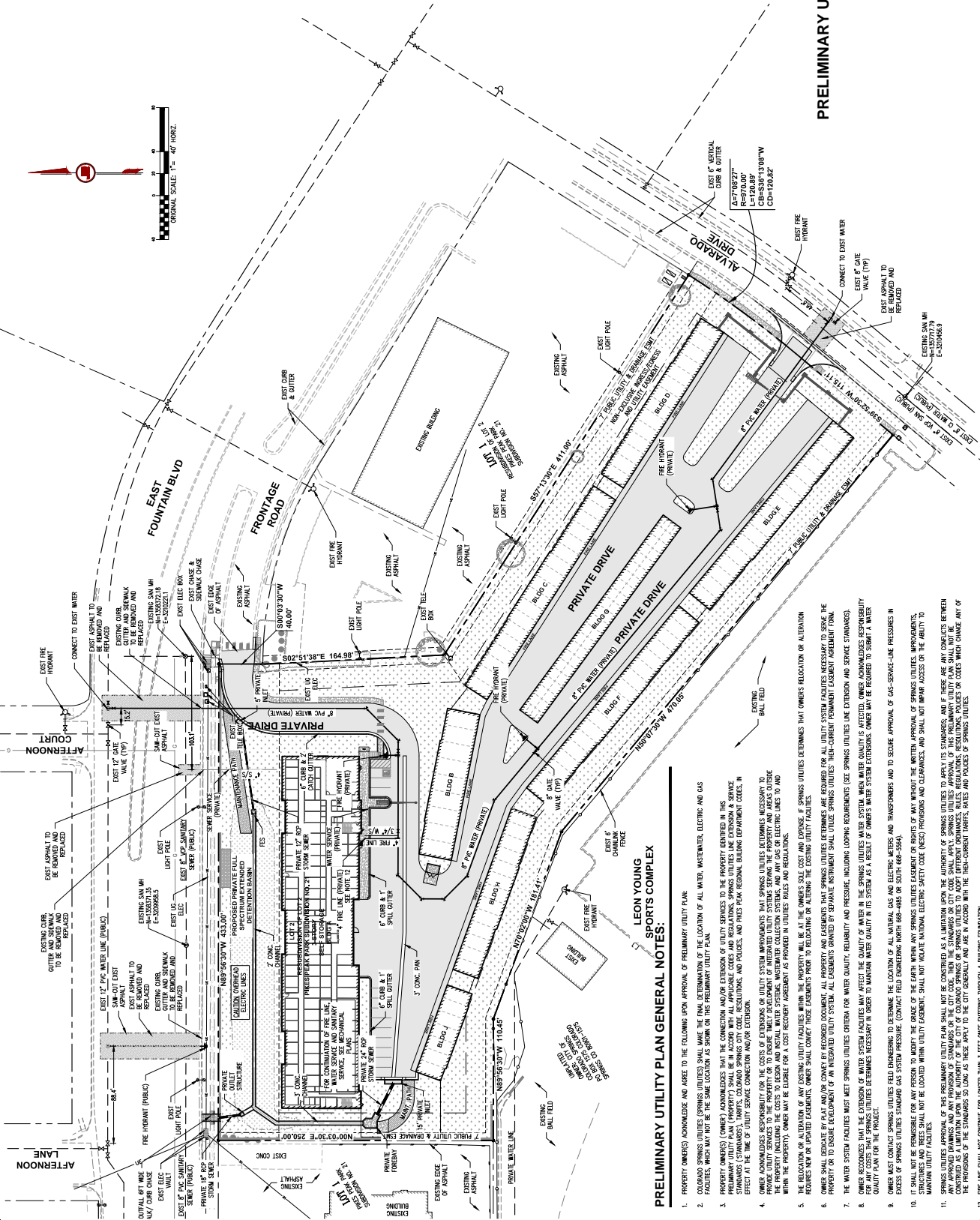
1. LOCATE DOWN SPOUTS PER ARCHITECTURE DRAWINGS.
2. ALL RP-RP IS TYPE "W" WITH 100-12" UNLESS OTHERWISE STATED.
3. ALL PROPOSED STORM DRAIN IS PRIVATE UNLESS OTHERWISE SHOWN.

NOTES:

1. CONTRACTOR SHALL FIELD VERIFY HORIZONTAL AND VERTICAL LOCATIONS OF ALL EXISTING UTILITIES PRIOR TO ANY CONSTRUCTION.

**FOUNTAIN SELF STORAGE
SITE DEVELOPMENT PLAN
PRELIMINARY UTILITY & PUBLIC FACILITIES PLAN**

CPC DP 18-00084
DATE: 06/25/2019
JOB #: 2416-217-009
SHEET 5 OF 5

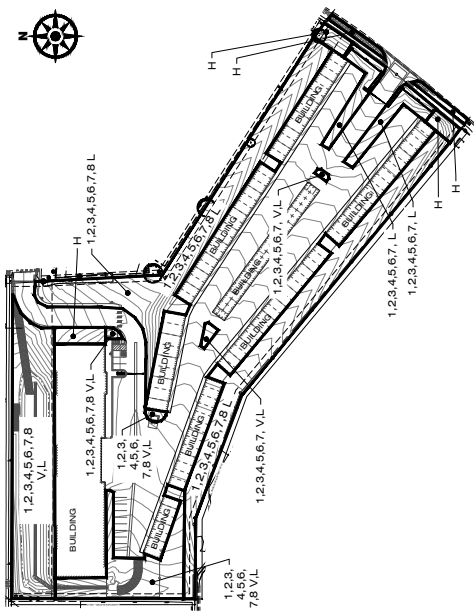


PRELIMINARY UTILITY PLAN GENERAL NOTES:

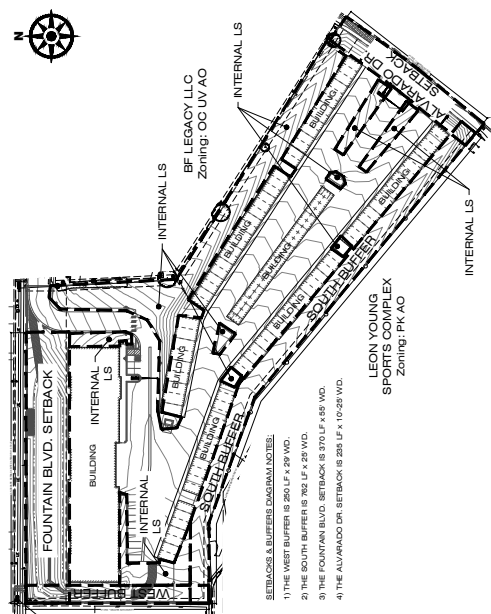
1. PROPERTY OWNER(S) ACKNOWLEDGE AND AGREE TO THE FOLLOWING UPON APPROVAL OF PRELIMINARY UTILITY PLAN:
2. COLORADO SPRINGS UTILITIES (SPRINGS UTILITIES) SHALL MAKE THE FINAL DETERMINATION OF THE LOCATION OF ALL WATER, WASTEWATER, ELECTRIC AND GAS FACILITIES, WHICH MAY NOT BE THE SAME LOCATION AS SHOWN ON THIS PRELIMINARY UTILITY PLAN.
3. PROPERTY OWNER(S) HEREBY ACKNOWLEDGES THAT THE CONNECTION AND/OR EXTENSION OF UTILITY SERVICES TO THE PROPERTY IDENTIFIED IN THIS PRELIMINARY UTILITY PLAN SHALL BE THE RESPONSIBILITY OF THE PROPERTY OWNER(S). THE PROPERTY OWNER(S) SHALL OBTAIN ALL NECESSARY PERMITS AND STANDARDS (STANDARDS), TARIFFS, COLORADO SPRINGS CITY CODE, REGULATIONS, AND POLICES, AND PRICES FROM RELEVANT DEPARTMENT CODES, IN EFFECT AT THE TIME OF UTILITY SERVICE CONNECTION AND/OR EXTENSION.
4. OWNER ACKNOWLEDGES RESPONSIBILITY FOR THE COSTS OF EXTENSIONS OR UTILITY SYSTEM IMPROVEMENTS THAT SPRINGS UTILITIES DETERMINES NECESSARY TO SERVE THE PROPERTY OR TO ENSURE THAT DEVELOPMENT OF INTEGRATED UTILITY SYSTEMS WITHIN THE PROPERTY AND AREAS OUTSIDE THE PROPERTY ARE IN ACCORDANCE WITH ALL APPLICABLE REGULATIONS, ORDINANCES, AND POLICES.
5. THE RELOCATION OR ALTERATION OF ANY EXISTING UTILITY FACILITIES WITHIN THE PROPERTY WILL BE AT THE OWNER'S COST AND EXPENSE. IF SPRINGS UTILITIES DETERMINES THAT OWNERS RELOCATION OR ALTERATION PROPERTY OR TO ENSURE DEVELOPMENT OF AN INTEGRATED UTILITY SYSTEM, ALL EXISTING INSTRUMENTS SHALL BE REVOKED OR ALTERED TO REFLECT THE CHANGES.
6. OWNER SHALL DEDICATE BY PLAN AND/OR CONVEY BY RECORDED DOCUMENT, ALL PROPERTY AND EASEMENTS ARE REQUIRED FOR ALL UTILITY SYSTEM FACILITIES NECESSARY TO SERVE THE PROPERTY OR TO ENSURE DEVELOPMENT OF AN INTEGRATED UTILITY SYSTEM. ALL EASEMENTS OBTAINED BY SEPARATE INSTRUMENT SHALL UTILIZE SPRINGS UTILITIES THEN-CURRENT PERMANENT EASEMENT FORM.
7. THE WATER SYSTEM FACILITIES MUST MEET SPRINGS UTILITIES CRITERIA FOR WATER QUALITY, RELIABILITY AND PRESSURE, INCLUDING LOOPING REQUIREMENTS (SEE SPRINGS UTILITIES WATER SYSTEM WHEN WATER QUALITY IS AFFECTED, OWNER KNOWLEDGES RESPONSIBILITY FOR ANY COSTS THAT SPRINGS UTILITIES DETERMINES NECESSARY TO MAINTAIN WATER QUALITY IN ITS SYSTEM AS A RESULT OF OWNERS WATER SYSTEM EXTENSIONS, OWNER MAY BE REQUIRED TO SUBMIT A WATER QUALITY PLAN FOR THE PROJECT.
8. OWNER MUST CONTACT SPRINGS UTILITIES FIELD ENGINEERS TO DETERMINE THE LOCATION OF ALL NATURAL GAS AND ELECTRIC METERS AND TRANSFORMERS AND TO SECURE APPROVAL OF GAS-SERVICE-LINE PRESSURES IN EXCESS OF SPRINGS UTILITIES STANDARD GAS SYSTEM PRESSURE. CONTACT FIELD ENGINEERS NORTH 688-4460 OR SOUTH 688-5666.
9. IT SHALL NOT BE RESPONSIBLE FOR ANY PERSON TO MODIFY THE GRADE OF THE EXISTING MAIN SPRINGS UTILITIES EASEMENT OR RIGHTS OF WAY WITHOUT THE WRITTEN APPROVAL OF SPRINGS UTILITIES. IMPROVEMENTS, EXTENSIONS, OR ALTERATIONS TO EXISTING UTILITY FACILITIES, SHALL NOT BE LOCATED WITHIN UTILITY EASEMENT, SHALL NOT VIOLATE NATIONAL ELECTRICAL SAFETY CODE (NEC) PROVISIONS AND REQUIREMENTS, AND SHALL NOT IMPAIR ACCESS TO THE ADJACENT MAINTENANCE UTILITY FACILITIES.
10. SPRINGS UTILITIES APPROVAL OF THIS PRELIMINARY UTILITY PLAN SHALL NOT BE CONSIDERED AS A LIMITATION UPON THE AUTHORITY OF SPRINGS UTILITIES TO APPLY ITS STANDARDS AND IF THERE ARE ANY CONFLICTS BETWEEN ANY APPROVED DRAWINGS AND ANY PROVISIONS OR STANDARDS OF THE CITY CODE, THEN THE CITY SHALL APPLY SPRINGS UTILITIES STANDARDS. APPROVAL OF THIS PRELIMINARY UTILITY PLAN SHALL NOT BE CONSIDERED AS A WAIVER OF ANY RIGHTS OR STANDARDS OF THE CITY CODE, NOR SHALL IT BE CONSIDERED AS A WAIVER OF ANY RIGHTS OR STANDARDS OF THE CITY CODE WHICH CHARGE ANY OF THE PROVISIONS OF THE STANDARDS SO LONG AS THESE APPLY TO THE CITY GENERALLY AND ARE IN ACCORD WITH THE THEN-CURRENT TARIFFS, RATES AND POLICES OF SPRINGS UTILITIES.
11. FIRE LINE SHALL NOT CONTINUE FOR LONGER THAN 3 FEET EXISTING THROUGH A BUILDING FOUNDATION.

FIGURE 2

SCHMATIC LANDSCAPE DIAGRAM (NTS)

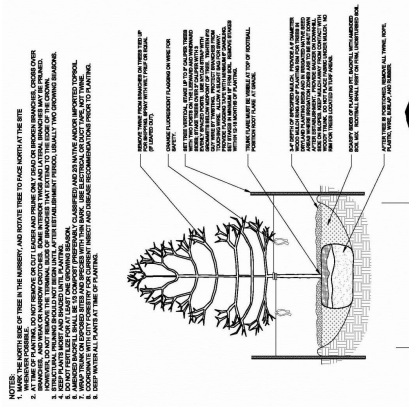


LANDSCAPE SETBACKS & BUFFERS DIAGRAM (NTS)

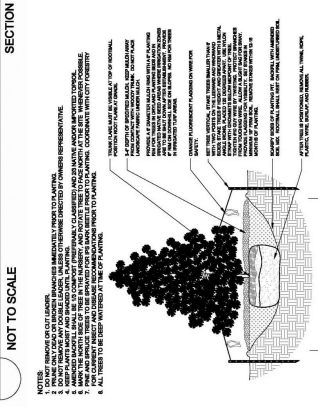


- SETBACKS & BUFFERS DIAGRAM NOTES:
- 1) THE WEST BUFFER IS 250 LF X 29' WD.
 - 2) THE SOUTH BUFFER IS 762 LF X 29' WD.
 - 3) THE FOUNTAIN BLVD. SETBACK IS 370 LF X 29' WD.
 - 4) THE ALVARADO DR. SETBACK IS 235 LF X 10'-28' WD.

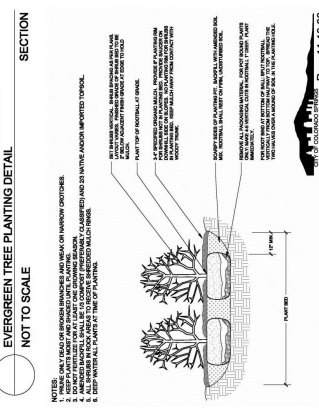
CITY OF COLORADO SPRINGS PLANTING DETAILS



DECIDUOUS TREE PLANTING DETAIL
NOT TO SCALE
Rev: 11.13.08

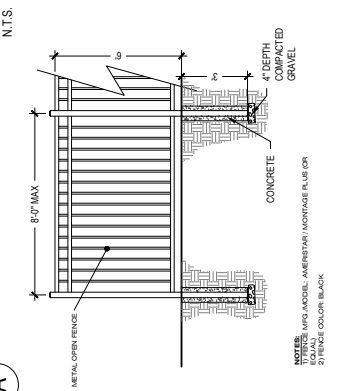


EVERGREEN TREE PLANTING DETAIL
NOT TO SCALE
Rev: 11.13.08

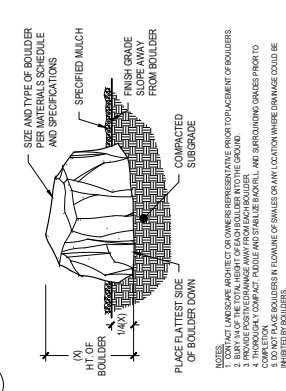


SHRUB PLANTING DETAIL
NOT TO SCALE
Rev: 11.13.08

6' HT. METAL FENCE

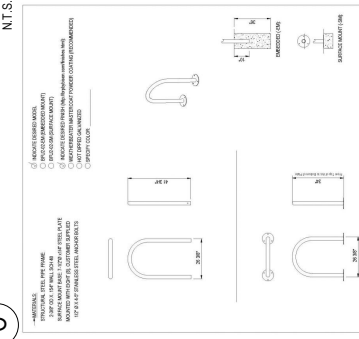


LANDSCAPE BOULDER

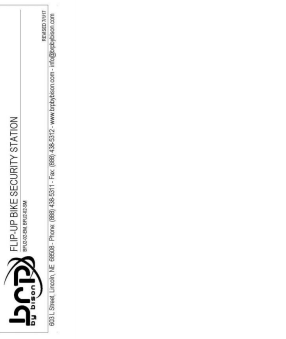


LANDSCAPE BOULDER
NOT TO SCALE
Rev: 11.13.08

BIKE RACK



FLIP-UP BIKE SECURITY STATION



FLIP-UP BIKE SECURITY STATION
NOT TO SCALE
Rev: 11.13.08

FOUNTAIN SELF STORAGE
SITE DEVELOPMENT PLAN
LANDSCAPE NOTES & DETAILS

CPC DP 18-00084
DATE: 06/25/2019
JOB #: 2416-217-009
L4



BOOSTER PUMP

REFER TO METAL

POINT OF CONNECTION - 3/4"

THE POINT OF CONNECTION SHALL BE INSTALLED AT THE LOCATION SHOWN. INSTALL A 3/4" CONSUMPTIVE USE METER ASSEMBLY PER DETAIL "3/4" INVERTED BOLLER DOWN 4" DEPTH TO LANDSCAPE AREA AS SHOWN. THE METER SHALL BE INSTALLED WITH THE CHECK VALVE ON THE METER VALVE AND EXTENDING TO THE 3/4" VALVE. THE METER SHALL CONFORM TO LOCAL CODE. FEES AND PERMITS ASSOCIATED WITH WORK ARE TO BE OBTAINED AND PAID BY CONTRACTOR. FINAL LOCATION OF CONTROLLER SHALL BE REVIEWED AND APPROVED BY OWNERS REPRESENTATIVE PRIOR TO START OF WORK.

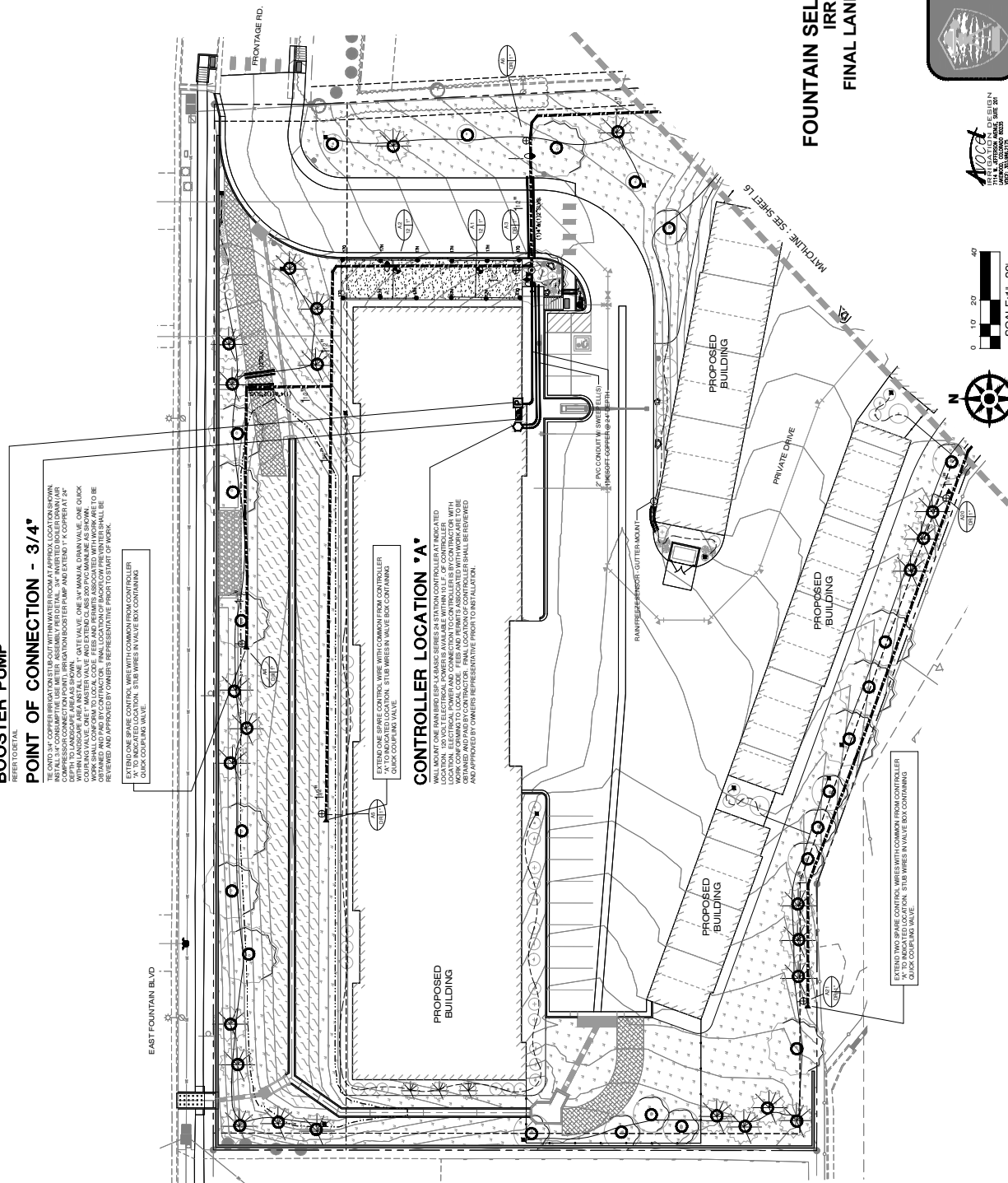
EXTEND ONE SPARE CONTROL WIRE WITH LOCKWIRE FROM CONTROLLER TO INDICATED LOCATION. 3/8" WIRES IN VALVE BOX CONTAINING CHECK COUPLING VALVE.

CONTROLLER LOCATION "A"

WILL MOUNT ONE IN-RUN IRRIGATOR SERIES AS SYSTEM CONTROLLER AT INDICATED LOCATION. ELECTRICAL POWER AND CONNECTION TO CONTROLLER BY CONTRACTOR WITH LOCATION, ELECTRICAL POWER AND CONNECTION TO CONTROLLER BY CONTRACTOR WITH LOCATION, ELECTRICAL POWER AND CONNECTION TO CONTROLLER BY CONTRACTOR WITH LOCATION, ELECTRICAL POWER AND CONNECTION TO CONTROLLER BY CONTRACTOR WITH LOCATION, ELECTRICAL POWER AND CONNECTION TO CONTROLLER BY CONTRACTOR WITH LOCATION. FINAL LOCATION OF CONTROLLER SHALL BE REVIEWED AND APPROVED BY OWNERS REPRESENTATIVE PRIOR TO INSTALLATION.

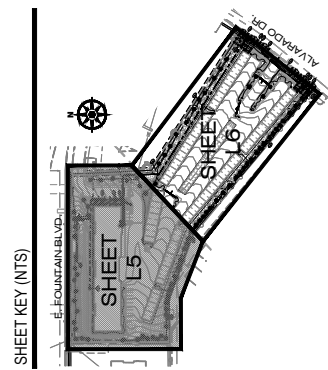
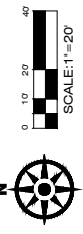
EXTEND ONE SPARE CONTROL WIRE WITH LOCKWIRE FROM CONTROLLER TO INDICATED LOCATION. 3/8" WIRES IN VALVE BOX CONTAINING CHECK COUPLING VALVE.

EXTEND TWO SPARE CONTROL WIRES WITH LOCKWIRE FROM CONTROLLER TO INDICATED LOCATION. 3/8" WIRES IN VALVE BOX CONTAINING CHECK COUPLING VALVE.

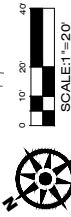
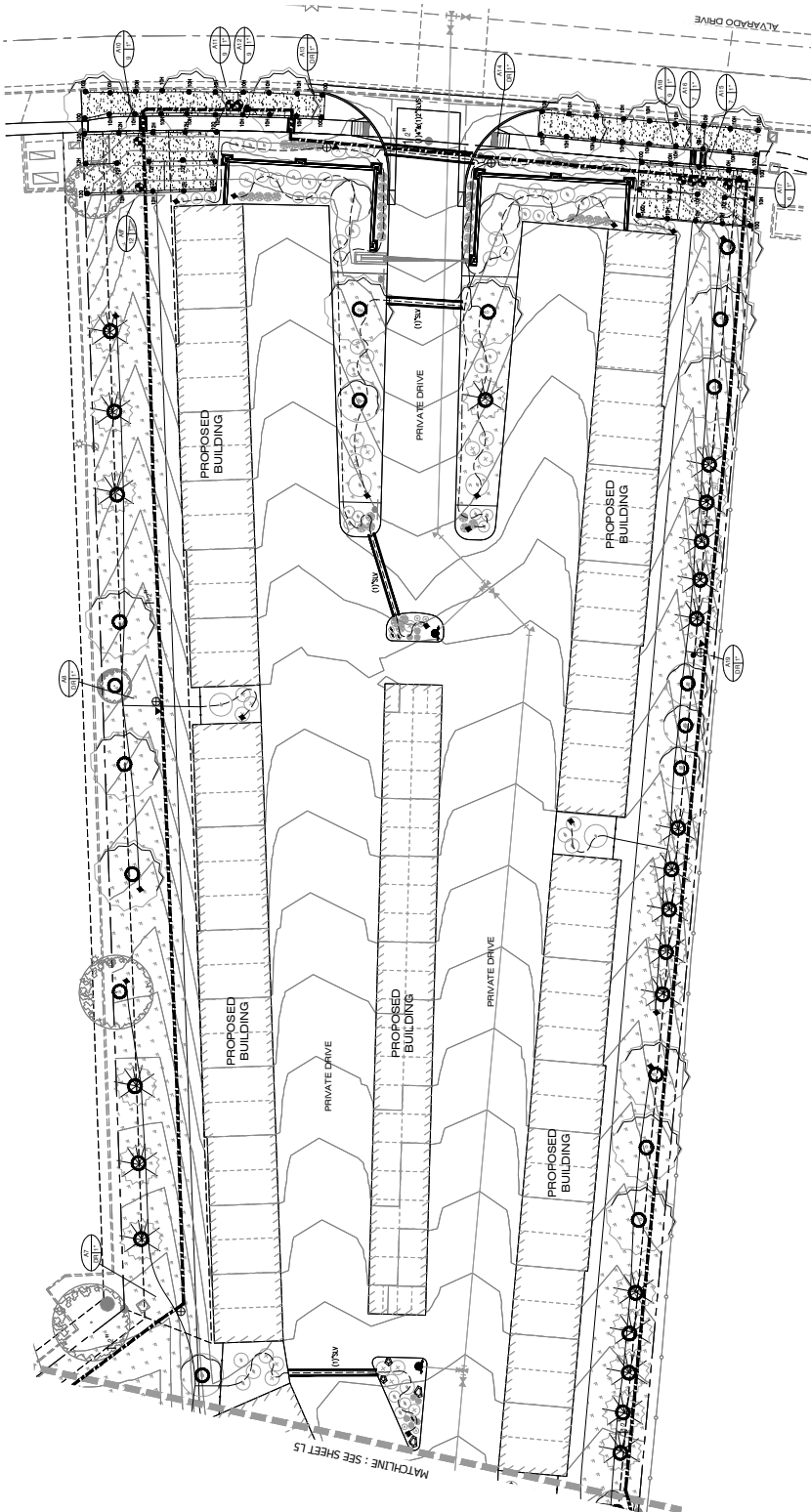


FOUNTAIN SELF STORAGE
IRRIGATION PLAN
FINAL LANDSCAPE PLAN

CPC DP 18-00084
 DATE: 06/25/2019
 JOB #: 2416-217-009



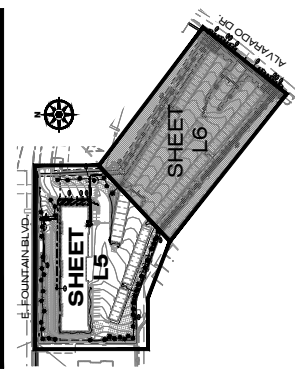
IRRIGATION PLAN



Irrigation Equipment and Materials Schedule

SYMBOL	MANUFACTURER	MODEL NO.	DESCRIPTION	EST. QTY.	COMMENTS
①	HANBIRD	FRS-30	30" W.P. 100' SPRAY HEAD	1	
②	HANBIRD	FRS-30	30" W.P. 100' SPRAY HEAD	10	
③	HANBIRD	FRS-30	30" W.P. 100' SPRAY HEAD	10	
④	HANBIRD	FRS-30	30" W.P. 100' SPRAY HEAD	10	
⑤	HANBIRD	FRS-30	30" W.P. 100' SPRAY HEAD	10	
⑥	HANBIRD	FRS-30	30" W.P. 100' SPRAY HEAD	10	
⑦	HANBIRD	FRS-30	30" W.P. 100' SPRAY HEAD	10	
⑧	HANBIRD	FRS-30	30" W.P. 100' SPRAY HEAD	10	
⑨	HANBIRD	FRS-30	30" W.P. 100' SPRAY HEAD	10	
⑩	HANBIRD	FRS-30	30" W.P. 100' SPRAY HEAD	10	
⑪	HANBIRD	FRS-30	30" W.P. 100' SPRAY HEAD	10	
⑫	HANBIRD	FRS-30	30" W.P. 100' SPRAY HEAD	10	
⑬	HANBIRD	FRS-30	30" W.P. 100' SPRAY HEAD	10	
⑭	HANBIRD	FRS-30	30" W.P. 100' SPRAY HEAD	10	
⑮	HANBIRD	FRS-30	30" W.P. 100' SPRAY HEAD	10	
⑯	HANBIRD	FRS-30	30" W.P. 100' SPRAY HEAD	10	
⑰	HANBIRD	FRS-30	30" W.P. 100' SPRAY HEAD	10	
⑱	HANBIRD	FRS-30	30" W.P. 100' SPRAY HEAD	10	
⑲	HANBIRD	FRS-30	30" W.P. 100' SPRAY HEAD	10	
⑳	HANBIRD	FRS-30	30" W.P. 100' SPRAY HEAD	10	
㉑	HANBIRD	FRS-30	30" W.P. 100' SPRAY HEAD	10	
㉒	HANBIRD	FRS-30	30" W.P. 100' SPRAY HEAD	10	
㉓	HANBIRD	FRS-30	30" W.P. 100' SPRAY HEAD	10	
㉔	HANBIRD	FRS-30	30" W.P. 100' SPRAY HEAD	10	
㉕	HANBIRD	FRS-30	30" W.P. 100' SPRAY HEAD	10	
㉖	HANBIRD	FRS-30	30" W.P. 100' SPRAY HEAD	10	
㉗	HANBIRD	FRS-30	30" W.P. 100' SPRAY HEAD	10	
㉘	HANBIRD	FRS-30	30" W.P. 100' SPRAY HEAD	10	
㉙	HANBIRD	FRS-30	30" W.P. 100' SPRAY HEAD	10	
㉚	HANBIRD	FRS-30	30" W.P. 100' SPRAY HEAD	10	
㉛	HANBIRD	FRS-30	30" W.P. 100' SPRAY HEAD	10	
㉜	HANBIRD	FRS-30	30" W.P. 100' SPRAY HEAD	10	
㉝	HANBIRD	FRS-30	30" W.P. 100' SPRAY HEAD	10	
㉞	HANBIRD	FRS-30	30" W.P. 100' SPRAY HEAD	10	
㉟	HANBIRD	FRS-30	30" W.P. 100' SPRAY HEAD	10	
㊱	HANBIRD	FRS-30	30" W.P. 100' SPRAY HEAD	10	
㊲	HANBIRD	FRS-30	30" W.P. 100' SPRAY HEAD	10	
㊳	HANBIRD	FRS-30	30" W.P. 100' SPRAY HEAD	10	
㊴	HANBIRD	FRS-30	30" W.P. 100' SPRAY HEAD	10	
㊵	HANBIRD	FRS-30	30" W.P. 100' SPRAY HEAD	10	
㊶	HANBIRD	FRS-30	30" W.P. 100' SPRAY HEAD	10	
㊷	HANBIRD	FRS-30	30" W.P. 100' SPRAY HEAD	10	
㊸	HANBIRD	FRS-30	30" W.P. 100' SPRAY HEAD	10	
㊹	HANBIRD	FRS-30	30" W.P. 100' SPRAY HEAD	10	
㊺	HANBIRD	FRS-30	30" W.P. 100' SPRAY HEAD	10	
㊻	HANBIRD	FRS-30	30" W.P. 100' SPRAY HEAD	10	
㊼	HANBIRD	FRS-30	30" W.P. 100' SPRAY HEAD	10	
㊽	HANBIRD	FRS-30	30" W.P. 100' SPRAY HEAD	10	
㊾	HANBIRD	FRS-30	30" W.P. 100' SPRAY HEAD	10	
㊿	HANBIRD	FRS-30	30" W.P. 100' SPRAY HEAD	10	
Ⓜ	FRANKLIN	VERA-JET PAV07C	VERA-JET PAV07C	14	REFER TO LIST FOR ADDITIONAL INFORMATION
Ⓝ	NEWFAM	RES-06-02	TREE RINGS	9	
Ⓞ			CONTROL VALVE STATION		
Ⓟ			CONTROL VALVE SIZE		

SHEET KEY (NTS)

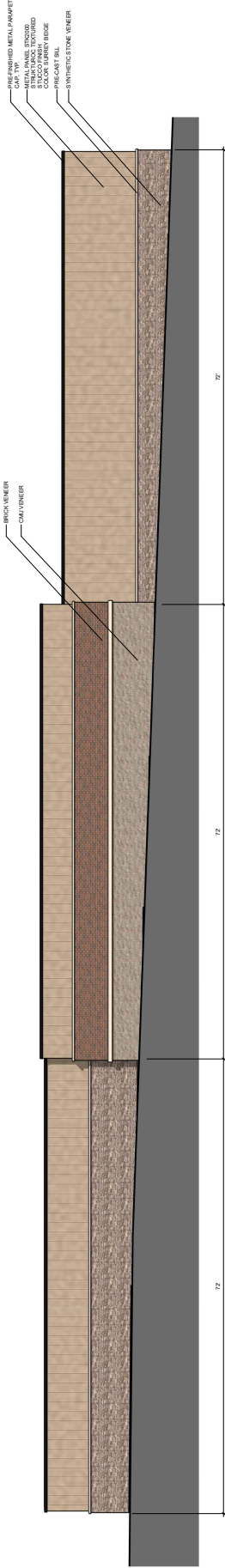


FOUNTAIN SELF STORAGE
IRRIGATION PLAN
FINAL LANDSCAPE PLAN

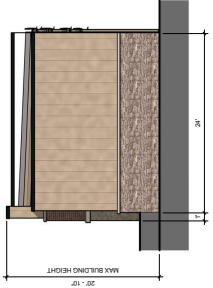
CPC DP 18-00084
 DATE: 06/25/2019
 JOB #: 2416-217-009



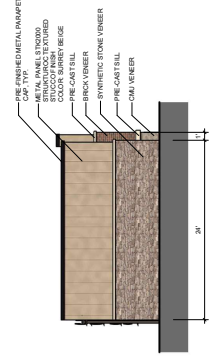
JEHN ENGINEERING, INC.
 3800 W. 10TH STREET
 DENVER, CO 80202
 PHONE: 303.733.8888
 FAX: 303.733.8888



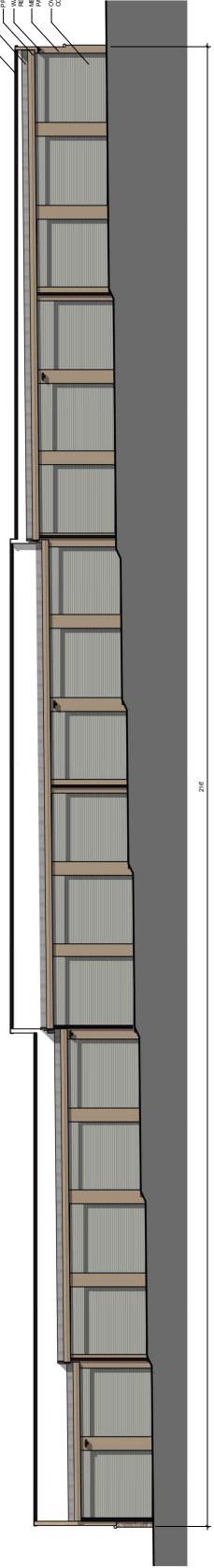
4 BUILDING C REAR ELEVATION - SDP
18' x 14'



3 BUILDING C LEFT ELEVATION - SDP
18' x 14'



2 BUILDING C RIGHT ELEVATION - SDP
18' x 14'



1 BUILDING C FRONT ELEVATION - SDP
18' x 14'

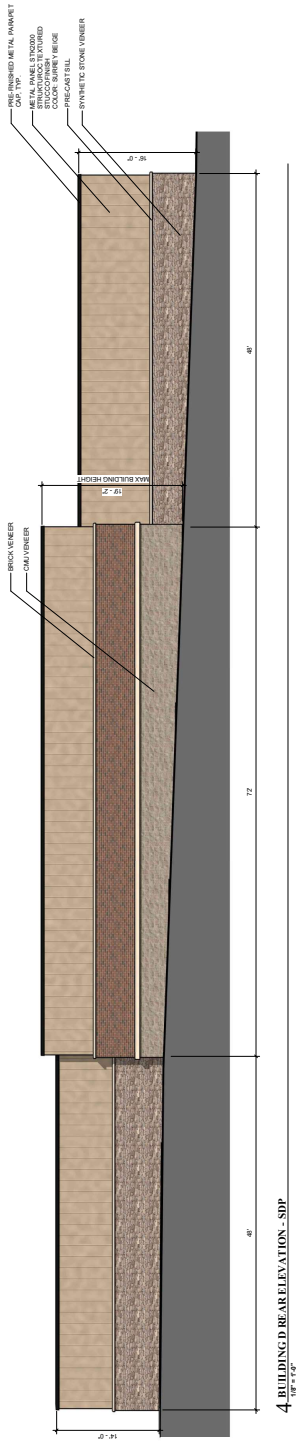
- MATERIAL LEGEND**
- WOOD GRAIN METAL SIDING
V-GROOVE FINISH
COLOR: LIGHT FIR
 - SYNTHETIC STONE VENEER
 - BRICK VENEER
 - CMU VENEER
 - METAL PANEL STUCCO SYSTEM
TEXTURED STUCCO FINISH
COLOR: SURREY BEIGE
 - MBCI ARCHITECTURAL STUCCO SYSTEM
COLOR: BROWNSTONE
 - STUCCO CORNICE
 - PRIMARY STUCCO SYSTEM
 - ALUMINUM CLAD LOW-E STOREFRONT ENTRY DOORS,
COLOR: WHITE

**FOUNTAIN SELF STORAGE
SITE DEVELOPMENT PLAN**

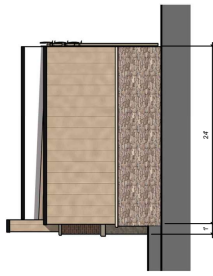
CDC DP 18-00084
DATE 06/25/2019
JOB #: 2416-217-009
PAGE A3



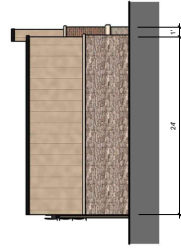
HAUSER
ARCHITECTS



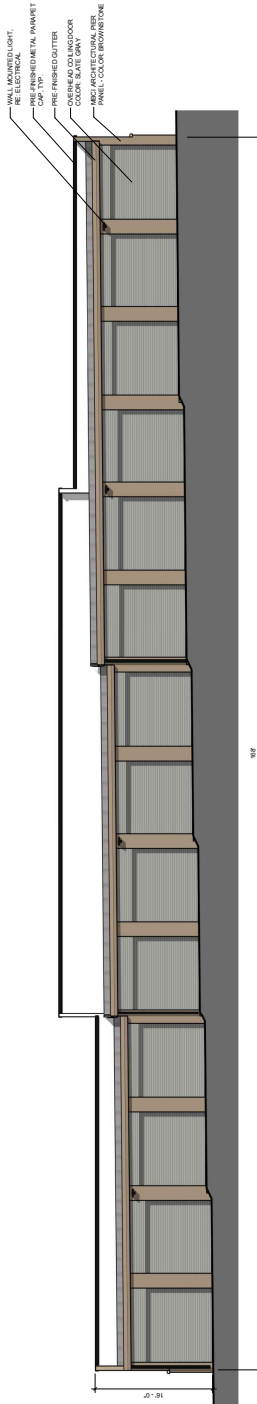
4 BUILDING REAR ELEVATION - SDP
1/8" = 1'-0"



3 BUILDING LEFT ELEVATION - SDP
1/8" = 1'-0"



2 BUILDING RIGHT ELEVATION - SDP
1/8" = 1'-0"



1 BUILDING FRONT ELEVATION - SDP
1/8" = 1'-0"

- MATERIAL LEGEND**
- WOOD GRAIN METAL PANELING WITH V-GROOVE SIDING
COLOR: LIGHT FIR
 - SYNTHETIC STONE VENEER
 - BRICK VENEER
 - CMU VENEER
 - METAL PANEL STUCCO SYSTEM
COLOR: EXAUNED
 - MBCI ARCHITECTURAL STUCCO SYSTEM
COLOR: BROWNSTONE
 - STUCCO CORNICE
 - PRIMARY STUCCO SYSTEM
COLOR: WHITE
 - ALUMINUM CLAD LOW-E STOREFRONT ENTRY DOORS

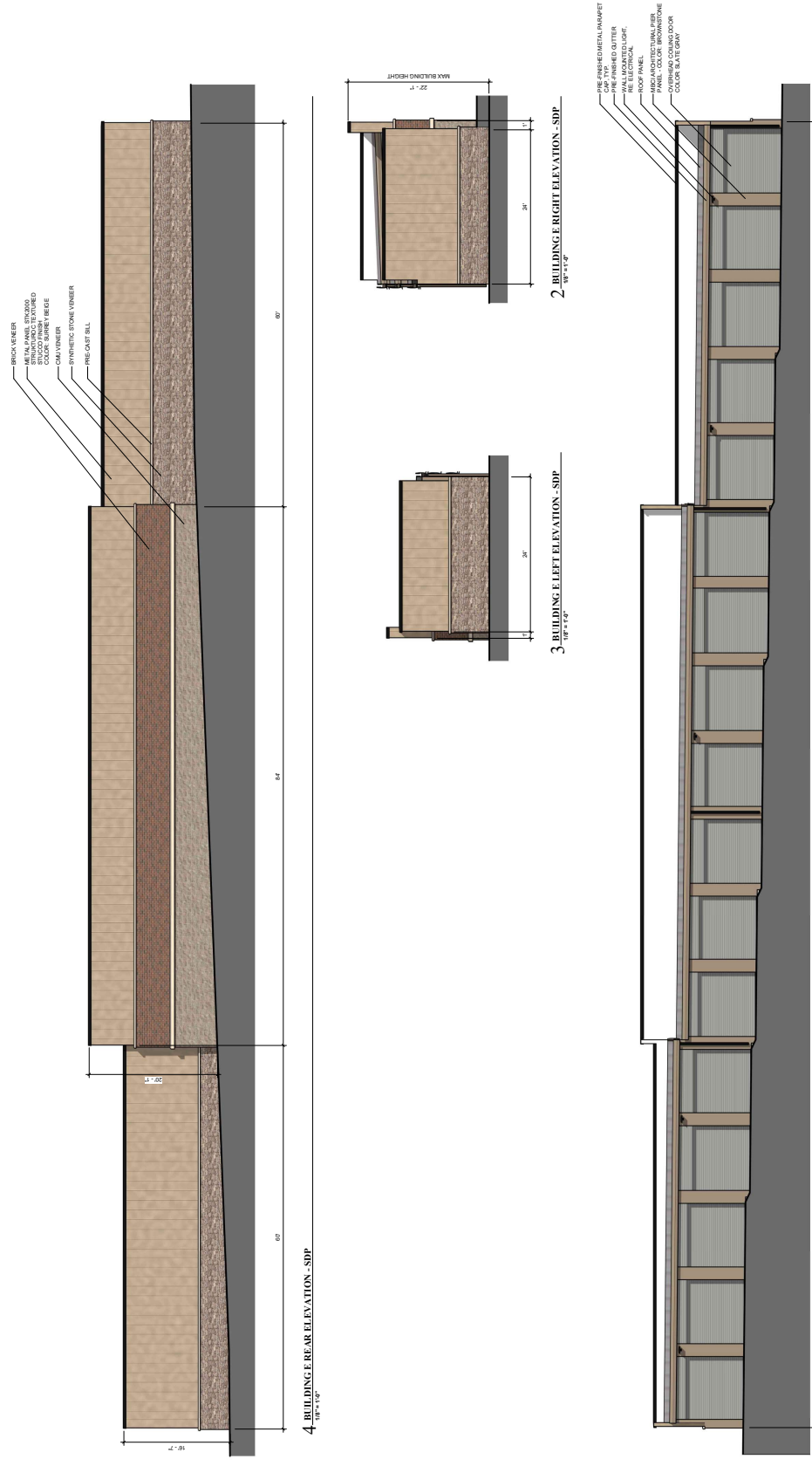
**FOUNTAIN SELF STORAGE
SITE DEVELOPMENT PLAN**

CDC DP 18-00084
DATE 06/25/2019
JOB #: 2415-217-009
PAGE A4



HAUSER
ARCHITECTS

3800 WEBSTER STREET
PH: (703) 424-8288 FAX: (703) 427-5408



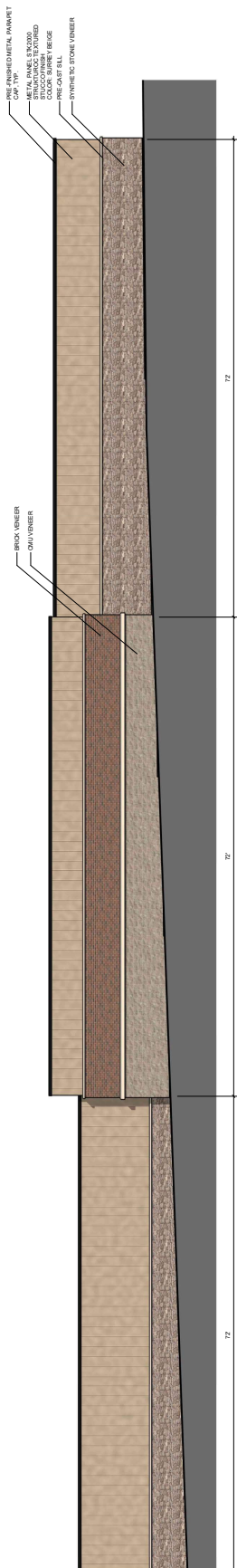
**FOUNTAIN SELF STORAGE
SITE DEVELOPMENT PLAN**

CDC DP 18-00084
DATE 08/25/2019
JOB #: 2415-217-009
PAGE A5

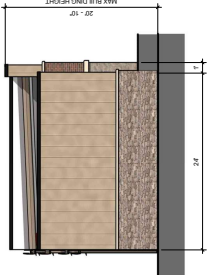


- MATERIAL LEGEND**
- WOOD GRAIN METAL V-GROOVE SIDING
COLOR: LIGHT FIR
 - BRICK VENEER
 - SYNTHETIC STONE VENEER
 - CMU VENEER
 - METAL PANEL STUCCO WITH STUCCO FINISH
COLOR: SURREY BEIGE
 - METAL ARCHITECTURAL FIBER OVERHEAD COILING DOOR
COLOR: BROWNSTONE
 - STUCCO CORNICE
 - PRIMARY STUCCO WITH STUCCO SYSTEM
COLOR: WHITE
 - ALUMINUM CLAD LOW-E STOREFRONT ENTRY DOORS,
COLOR: WHITE

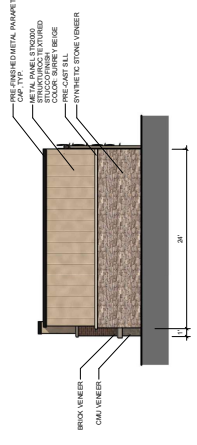
HAUSER ARCHITECTS



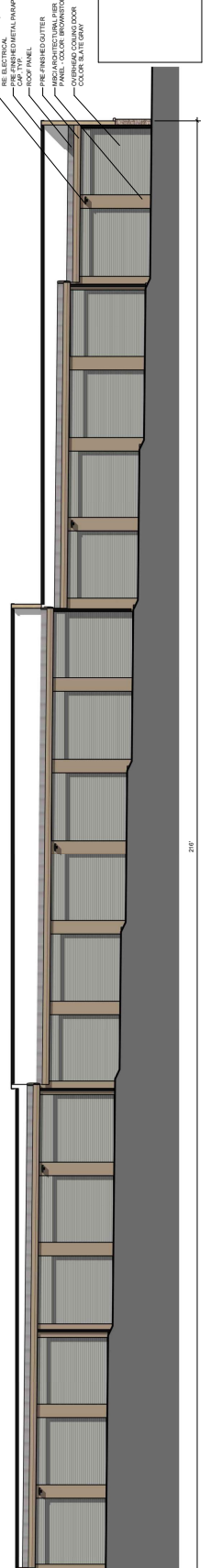
4 BUILDING REAR ELEVATION - SDP
18'-4 1/2"



2 BUILDING RIGHT ELEVATION - SDP
18'-4 1/2"



3 BUILDING LEFT ELEVATION - SDP
18'-4 1/2"



1 BUILDING FRONT ELEVATION - SDP
18'-4 1/2"

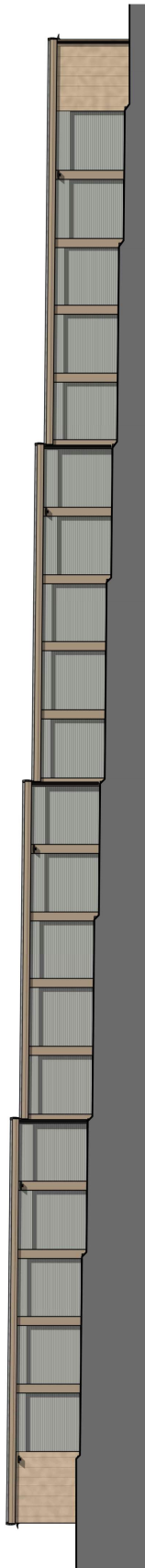
- MATERIAL LEGEND**
- WOOD GRAIN METAL PANEL AND 6" V-GROOVE SIDING
COLOR: LIGHT FIR
 - BRICK VENEER
 - SYNTHETIC STONE VENEER
 - BRICK VENEER
 - CMU VENEER
 - METAL PANEL STK2000
TEXTURED STUCCO FINISH
COLOR: SURREY BEIGE
 - MECI ARCHITECTURAL
TEXTURED STUCCO
COLOR: BROWNSTONE
 - STUCCO CORNICE
 - PRIMARY STUCCO
TEXTURED STUCCO SYSTEM
COLOR: WHITE
 - ALUMINUM CLAD LOW-E
STOREFRONT ENTRY DOORS
COLOR: WHITE

**FOUNTAIN SELF STORAGE
SITE DEVELOPMENT PLAN**

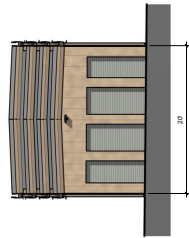
CDC DP 18-00084
DATE 06/25/2019
JOB #: 2415-217-009
PAGE A8



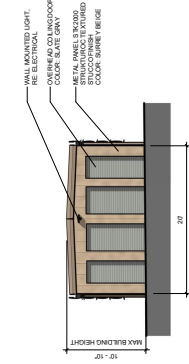
HAUSER
ARCHITECTS



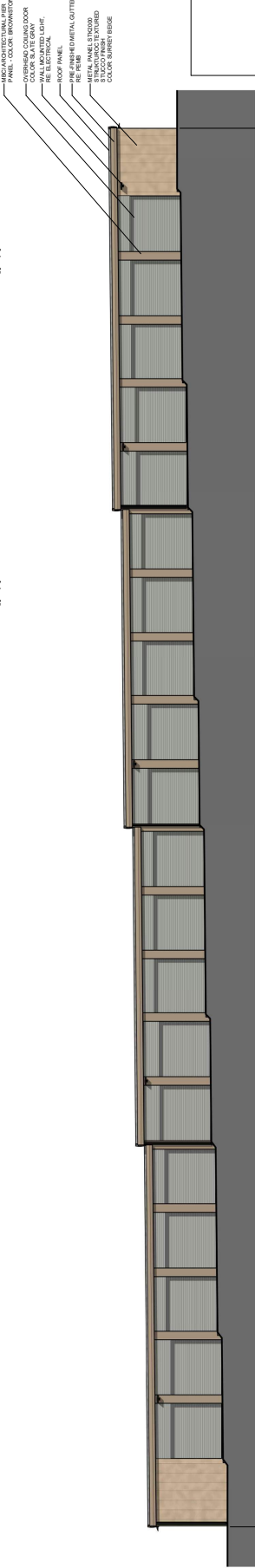
4 BUILDING G REAR ELEVATION - SDP
1/8" = 1'-0"



3 BUILDING G LEFT ELEVATION - SDP
1/8" = 1'-0"



2 BUILDING G RIGHT ELEVATION - SDP
1/8" = 1'-0"



1 BUILDING G FRONT ELEVATION - SDP
1/8" = 1'-0"

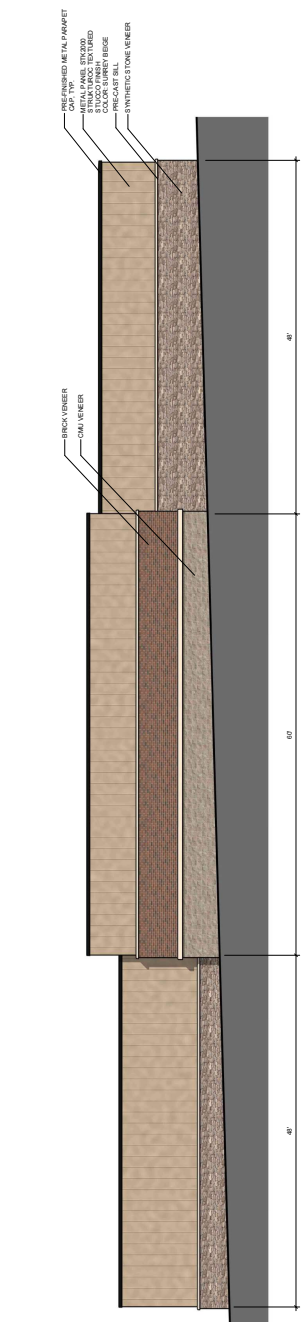
- MATERIAL LEGEND**
- WOOD GRAIN METAL PANELS AND 6" GROOVE SIDING
COLOR: LIGHT FIR
 - SYNTHETIC STONE VENEER
 - BRICK VENEER
 - CMU VENEER
 - METAL PANEL STK2000 STUCCO FINISH
COLOR: SURREY BEIGE
 - MEDIA ARCHITECTURAL STUCCO SYSTEM
COLOR: BROWNSTONE
 - STUCCO CORNICE
 - PRIMARY STUCCO STUCCO SYSTEM
COLOR: WHITE
 - ALUMINUM CLAD LOWE STOREFRONT ENTRY DOORS

**FOUNTAIN SELF STORAGE
SITE DEVELOPMENT PLAN**

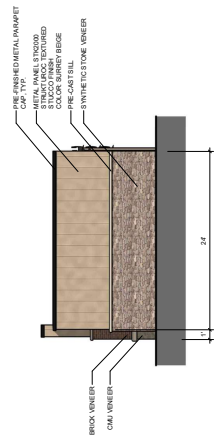
CDC DP 18-00084
DATE 08/25/2019
JOB #: 2415-217-009
PAGE A7



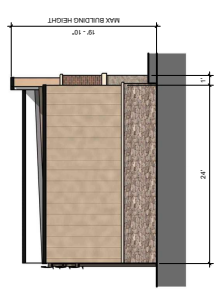
HAUSER
ARCHITECTS



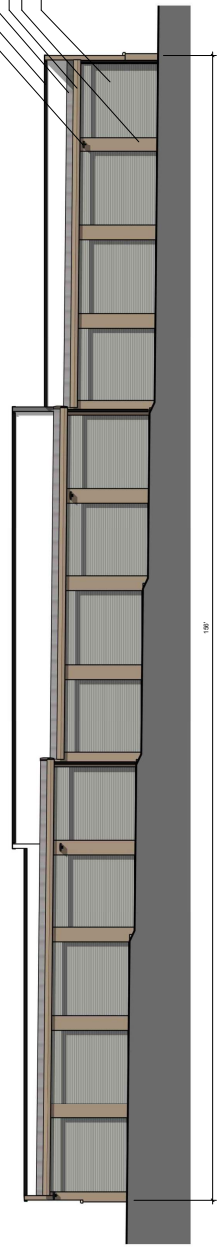
4 BUILDING REAR ELEVATION - SDP
18'-11/16"



3 BUILDING LEFT ELEVATION - SDP
18'-11/16"



2 BUILDING RIGHT ELEVATION - SDP
18'-11/16"



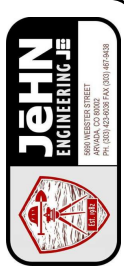
BUILDING FRONT ELEVATION - SDP
18'-11/16"

- WOOD GRAIN METAL PANEL STUCCO AND 6" V-GROOVE SIDING COLOR: LIGHT FIR
- SYNTHETIC STONE VENEER
- BRICK VENEER
- CMU VENEER
- METAL PANEL STK2000 STUCCO FINISH COLOR: SURREY BEIGE
- MCCI ARCHITECTURAL STUCCO SYSTEM COLOR: BROWNSTONE
- STUCCO CORNICE
- PRIMARY STUCCO STUCCO SYSTEM
- ALUMINUM CLAD LOW-E STOREFRONT ENTRY DOORS COLOR: WHITE

MATERIAL LEGEND
A.A.

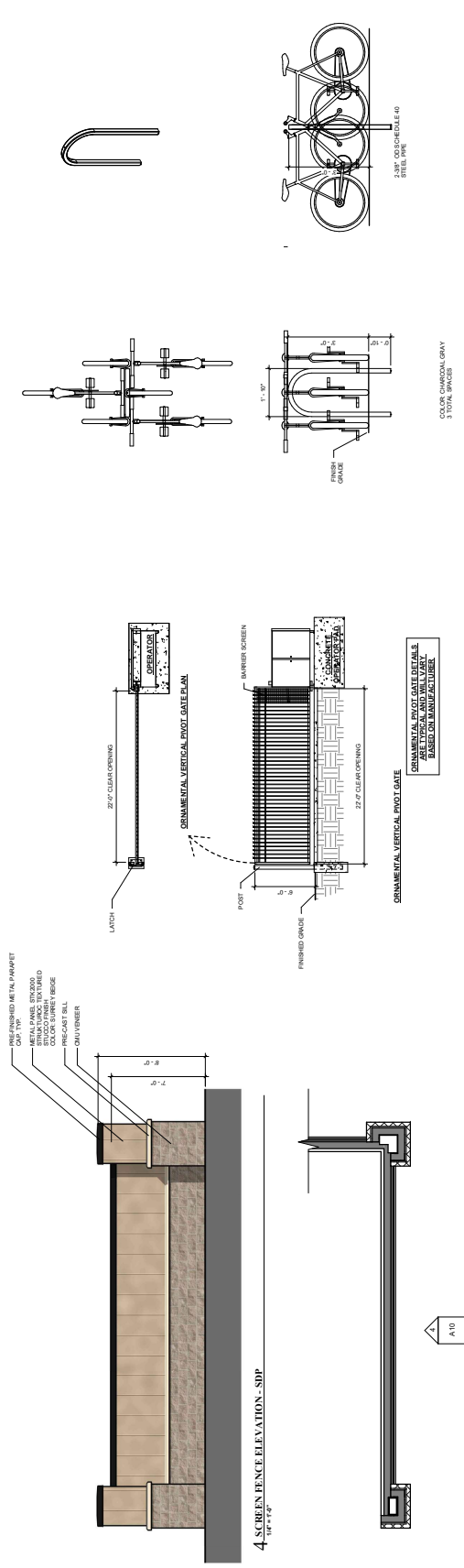
FOUNTAIN SELF STORAGE
SITE DEVELOPMENT PLAN

CDC DP 18-00084
DATE 06/25/2019
JOB #: 2415-217-009
PAGE A8



HAUSER
ARCHITECTS

380 WEBSTER STREET
PH: (310) 424-8288 FAX: (310) 427-8488

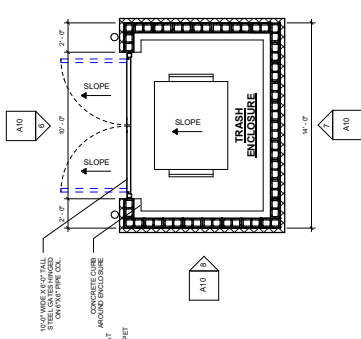


4 SCREEN FENCE ELEVATION - SDP
1/4" = 1'-0"

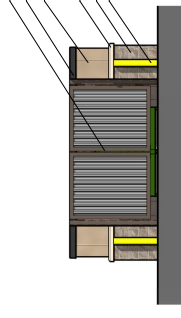
3 SCREEN FENCE PLAN - SDP
1/4" = 1'-0"

2 PIVOT GATE DETAIL - SDP
3/8" = 1'-0"

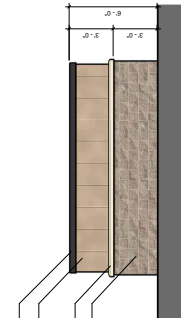
1 BIKE RACK DETAIL - SDP
1/2" = 1'-0"



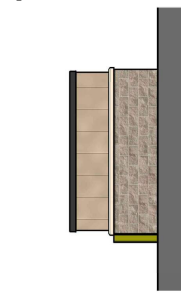
5 TRASH ENCLOSURE PLAN - SDP
1/4" = 1'-0"



6 TRASH ENCLOSURE - FRONT ELEVATION - SDP
1/4" = 1'-0"



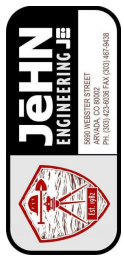
7 TRASH ENCLOSURE - REAR ELEVATION - SDP
1/4" = 1'-0"




8 TRASH ENCLOSURE - SIDE ELEVATION - SDP
1/4" = 1'-0"

**FOUNTAIN SELF STORAGE
SITE DEVELOPMENT PLAN**

CDC DP 18-00084
DATE 06/25/2019
JOB #: 2416-217-009
PAGE A 10



HAUSER
ARCHITECTS



Specifications

- Size: 15" x 15"
- Length: 15"
- Width: 15"
- Height: 4.33"
- Weight: 12.5 lb
- Material: Aluminum

Capable Luminaire

This luminaire is an A+ capable luminaire, which has been tested to meet the requirements of the IESNA Handbook, 10th Edition, for use in applications where the luminaire is used in conjunction with a lighting control system.

Capable Luminaire

- Capable of being used in conjunction with a lighting control system.
- Capable of being used in conjunction with a lighting control system.
- Capable of being used in conjunction with a lighting control system.

Ordering Information

Model	Color Temperature	Beam Spread	Output	Notes
DDSW1	3000K	15°	1000lm	Standard
DDSW2	4000K	15°	1000lm	Standard
DDSW3	5000K	15°	1000lm	Standard

Performance Data

Lumen Output

Model	Color Temperature	Beam Spread	Output	Notes
DDSW1	3000K	15°	1000lm	Standard
DDSW2	4000K	15°	1000lm	Standard
DDSW3	5000K	15°	1000lm	Standard

Electrical Load

Model	Color Temperature	Beam Spread	Output	Notes
DDSW1	3000K	15°	1000lm	Standard
DDSW2	4000K	15°	1000lm	Standard
DDSW3	5000K	15°	1000lm	Standard

Performance Data

Lumen Output

Model	Color Temperature	Beam Spread	Output	Notes
DDSW1	3000K	15°	1000lm	Standard
DDSW2	4000K	15°	1000lm	Standard
DDSW3	5000K	15°	1000lm	Standard

Electrical Load

Model	Color Temperature	Beam Spread	Output	Notes
DDSW1	3000K	15°	1000lm	Standard
DDSW2	4000K	15°	1000lm	Standard
DDSW3	5000K	15°	1000lm	Standard

Introduction

The D-Series Wall Luminaire is a stylish, fully adjustable luminaire designed for a wide range of applications. It features a sleek, modern design and is available in four different sizes to meet your specific needs.

Specifications

- Size: 15" x 15"
- Length: 15"
- Width: 15"
- Height: 4.33"
- Weight: 12.5 lb
- Material: Aluminum

Ordering Information

Model	Color Temperature	Beam Spread	Output	Notes
DDSW1	3000K	15°	1000lm	Standard
DDSW2	4000K	15°	1000lm	Standard
DDSW3	5000K	15°	1000lm	Standard

Performance Data

Lumen Output

Model	Color Temperature	Beam Spread	Output	Notes
DDSW1	3000K	15°	1000lm	Standard
DDSW2	4000K	15°	1000lm	Standard
DDSW3	5000K	15°	1000lm	Standard

Electrical Load

Model	Color Temperature	Beam Spread	Output	Notes
DDSW1	3000K	15°	1000lm	Standard
DDSW2	4000K	15°	1000lm	Standard
DDSW3	5000K	15°	1000lm	Standard

Performance Data

Lumen Output

Model	Color Temperature	Beam Spread	Output	Notes
DDSW1	3000K	15°	1000lm	Standard
DDSW2	4000K	15°	1000lm	Standard
DDSW3	5000K	15°	1000lm	Standard

Electrical Load

Model	Color Temperature	Beam Spread	Output	Notes
DDSW1	3000K	15°	1000lm	Standard
DDSW2	4000K	15°	1000lm	Standard
DDSW3	5000K	15°	1000lm	Standard

FOUNTAIN SELF STORAGE PHOTOMETRIC SPEC SHEETS



Pivotal Engineering
 Full Service MEP, Civil and Environmental Engineering
 7265 GREENIDGE RD
 WEST RIVER, MD 20686
 (301) 947-5714
 www.pivotaleng.com

CDC DP 18-00084
 DATE 08/25/2018
 JOB #: 2416-217-009

CDC DP 18-00084
 DATE 08/25/2018
 JOB #: 2416-217-009

CDC DP 18-00084
 DATE 08/25/2018
 JOB #: 2416-217-009